

ARKANSAS

2001

TRAFFIC CRASH STATISTICS



Arkansas State Police
Highway Safety Office
1 State Police Plaza Drive
Little Rock, Arkansas 72209

TABLE OF CONTENTS

INTRODUCTION

2001 ARKANSAS CRASH SUMMARY.....	2
----------------------------------	---

FIVE AND TEN YEAR TRENDS

FATAL CRASHES AND RATES.....	3
FATALITIES AND RATES.....	4
FATALITIES BY AGE GROUP, 1997-2001.....	5
NONFATAL INJURIES AND RATES.....	6
TOTAL CRASHES AND RATES.....	7
ALCOHOL/DRUG RELATED FATALITIES VS. TOTAL FATALITIES.....	8
PERCENT ALCOHOL/DRUG RELATED FATALITIES ARKANSAS VS. NATIONAL.....	9
ALCOHOL/DRUG RELATED CRASHES VS. TOTAL CRASHES.....	10
ALCOHOL/DRUG RELATED FATAL CRASHES VS. TOTAL FATAL CRASHES.....	11
MOTORCYCLE CRASHES.....	12
RAILROAD CRASHES, FATALITIES AND INJURIES.....	13

CURRENT YEAR (2001)

FATALITIES BY SAFETY RESTRAINT USAGE	
PERCENT USED AND NOT USED.....	14
FATALITIES BY SAFETY RESTRAINT USAGE BY AGE GROUP.....	15
FATAL CRASHES AND FATALITIES BY MONTH.....	16
CRASHES BY TIME OF DAY AND DAY OF WEEK.....	17
ALCOHOL/DRUG RELATED CRASHES BY TIME OF DAY AND DAY OF WEEK.....	18
FATAL CRASHES BY TIME OF DAY AND DAY OF WEEK.....	19
ALCOHOL/DRUG RELATED FATAL CRASHES BY TIME OF DAY AND DAY OF WEEK.....	20
CRASHES BY LIGHTING CONDITIONS.....	21
CRASHES BY ROAD SURFACE CONDITIONS.....	22
CRASHES BY ROAD SYSTEM.....	23
CRASH RATES BY ROAD SYSTEM.....	24
CRASHES BY RURAL/URBAN LOCATION.....	25
CRASHES BY INVESTIGATING AGENCY.....	26
PEDESTRIAN FATALITIES.....	27-28
ARKANSAS' 20 LARGEST CITIES BY POPULATION - CRASHES, FATALITIES AND INJURIES.....	29

COUNTY BREAKDOWNS

TOTAL CRASHES, FATALITIES AND INJURIES BY COUNTY IN 2001.....	30-31
ALCOHOL/DRUG RELATED CRASHES, FATALITIES AND INJURIES BY COUNTY IN 2001.....	32-33
FATALITIES VS. ALCOHOL/DRUG RELATED FATALITIES IN 2001 BY COUNTY.....	34

2001 ARKANSAS CRASH SUMMARY

- **On all public roads in Arkansas during 2001 there were:**

68,797 total crashes reported, a 2.7 % decrease from 2000

538 fatal crashes reported, a 6.9 % decrease from 2000

611 fatalities reported, a 6.3 % decrease from 2000

213 alcohol/drug related fatalities, a 4.4 % decrease from 2000

28.5 billion vehicle miles traveled, a 0.5 % increase from 2000

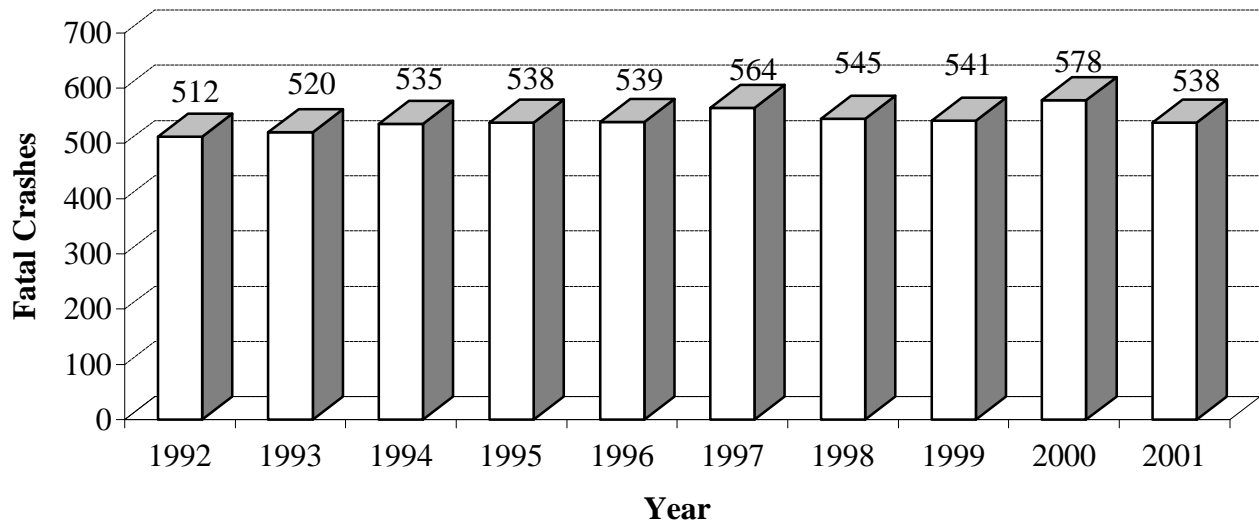
- **The fatality rate decreased from 2.3 in 2000 to 2.1 fatalities per 100 MVM* traveled.**
- **The fatal crash rate decreased from 2.0 in 2000 to 1.9 fatal crashes per 100 MVM* traveled.**

* Million vehicle miles

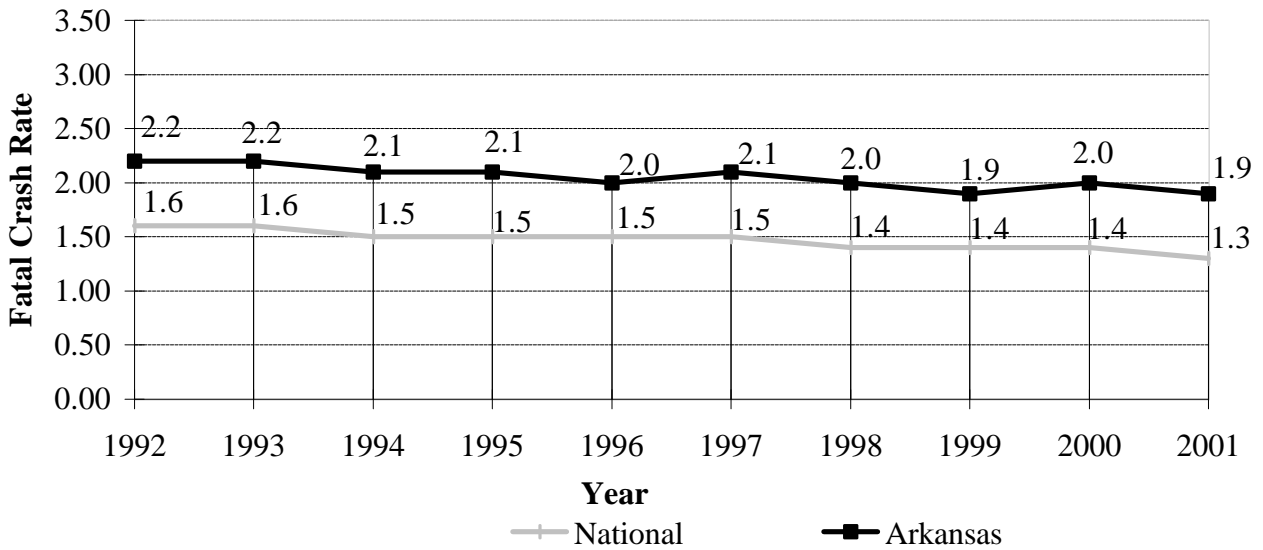
FATAL CRASHES AND RATES

10 YEAR TRENDS

STATEWIDE FATAL CRASHES



FATAL CRASH RATE (FATAL CRASHES PER 100 MVM*)

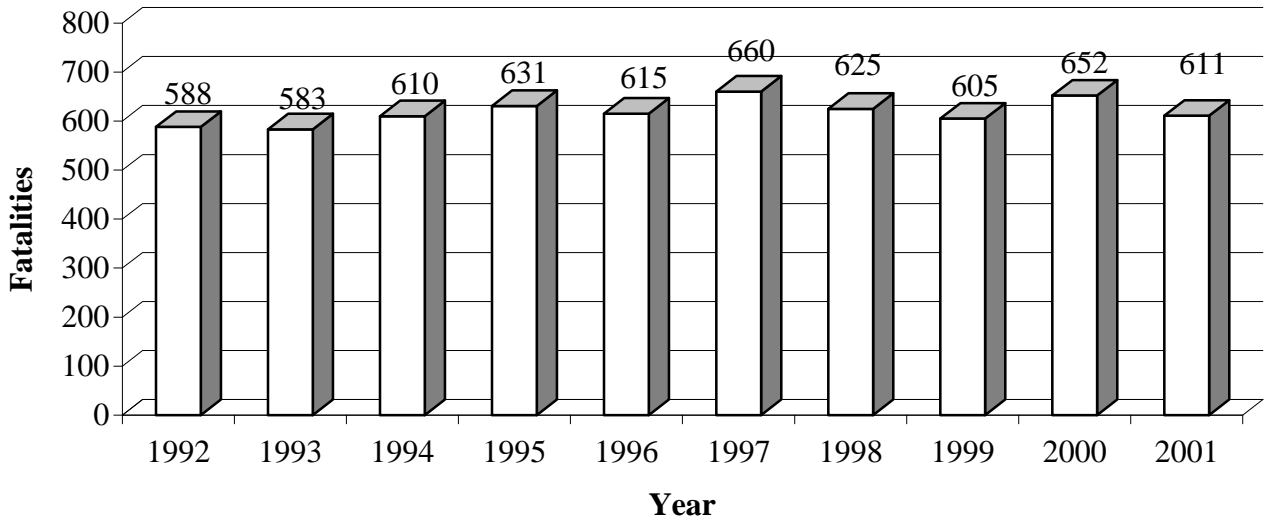


* Million vehicle miles

FATALITIES AND RATES

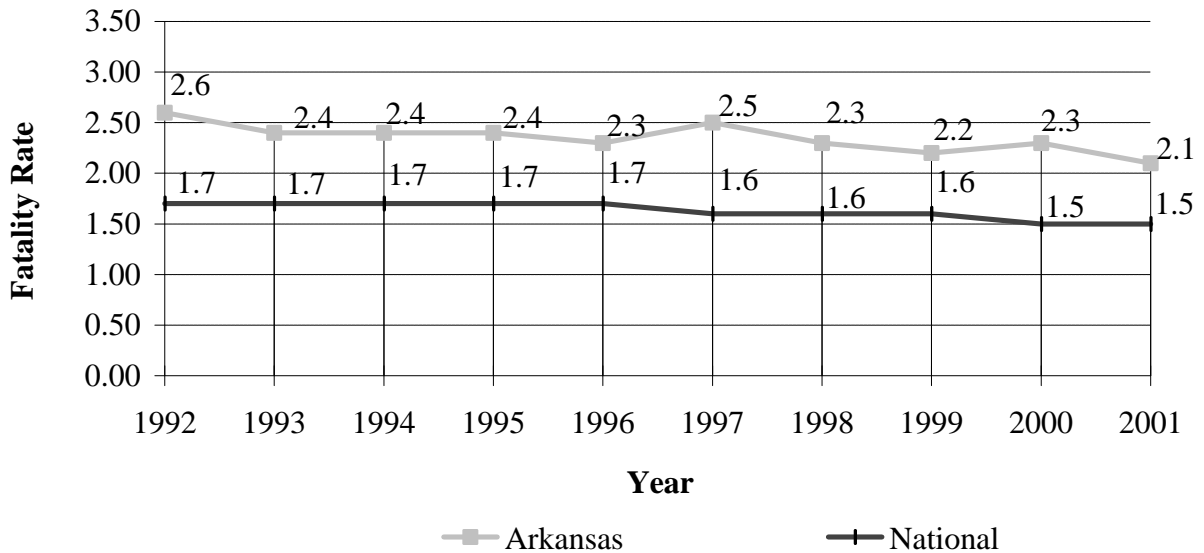
10 YEAR TRENDS

STATEWIDE FATALITIES



FATALITY RATE (FATALITIES PER 100 MVM*)

ARKANSAS FATALITY RATE (FATALITIES PER 100 MVM*)

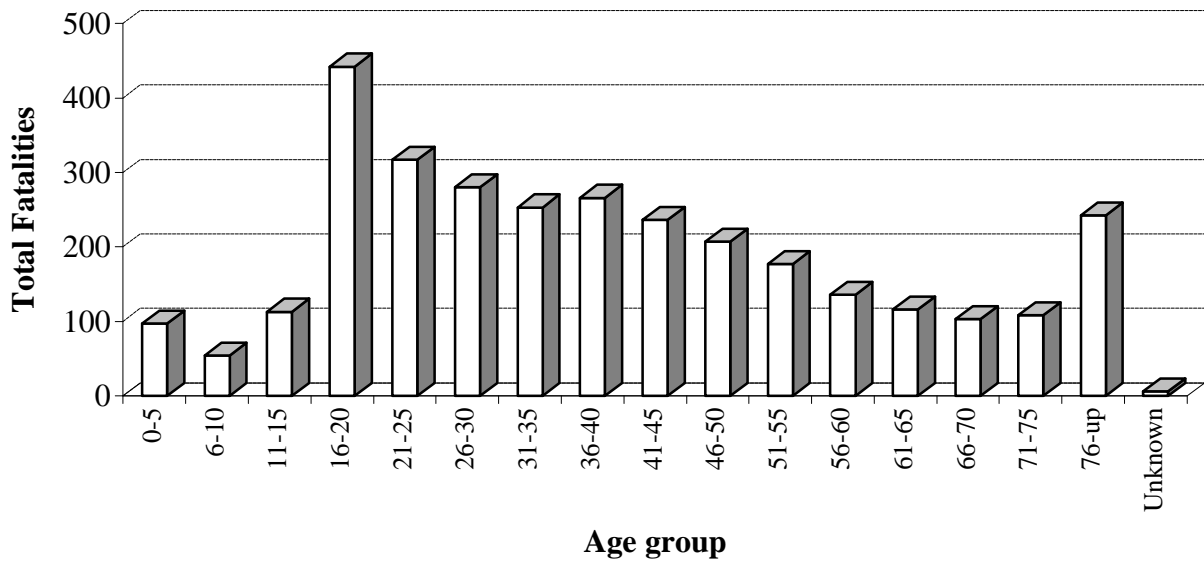


* Million vehicle miles

FATALITIES BY AGE GROUP, 1997-2001

5 YEAR TRENDS

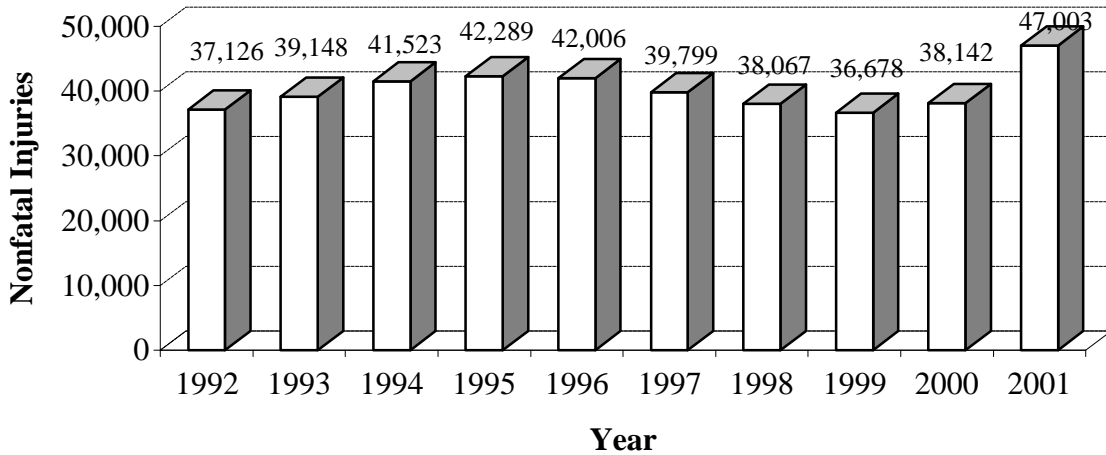
Age Group	1997	1998	1999	2000	2001	Total Fatalities
0-5	28	12	23	12	22	97
6-10	13	11	10	10	10	54
11-15	18	20	26	28	21	113
16-20	92	92	81	78	99	442
21-25	70	61	54	62	70	317
26-30	67	55	56	54	48	280
31-35	64	46	46	49	48	253
36-40	47	47	51	65	56	266
41-45	44	53	52	55	32	236
46-50	31	44	48	48	36	207
51-55	27	36	28	43	43	177
56-60	31	25	16	38	26	136
61-65	29	23	23	19	22	116
66-70	26	23	13	25	16	103
71-75	26	21	31	15	15	108
76-up	44	56	44	51	47	242
Unknown	3	0	3	0	0	6
Total	660	625	605	652	611	3,153



NONFATAL INJURIES AND RATES

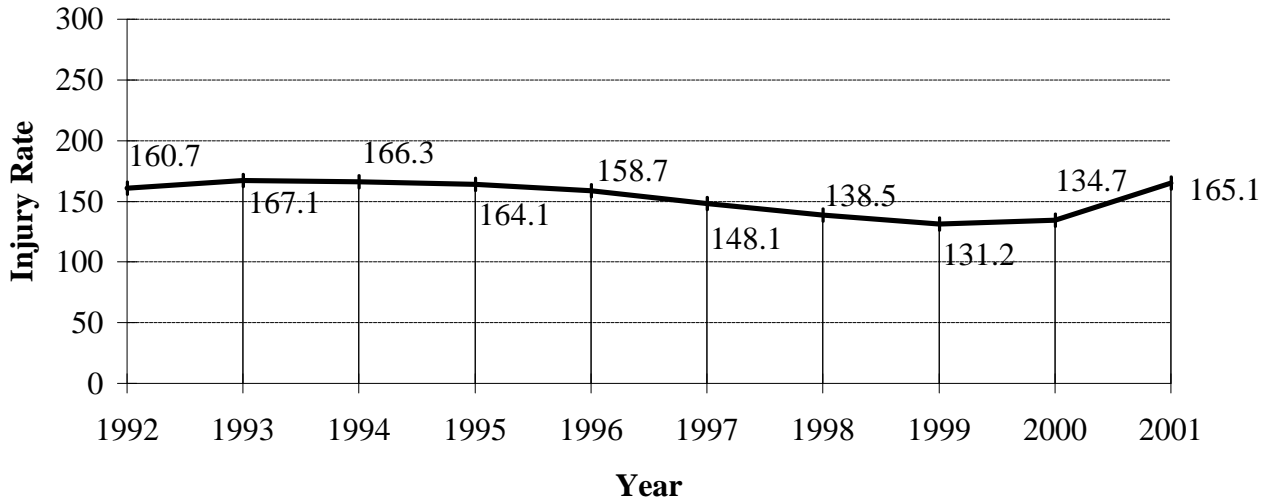
10 YEAR TRENDS

STATEWIDE NONFATAL INJURIES



Note: Increase in total number of nonfatal injuries in 2001 may be due to increase in police reported possible injuries.

INJURY RATE (INJURIES PER 100 MVM*)

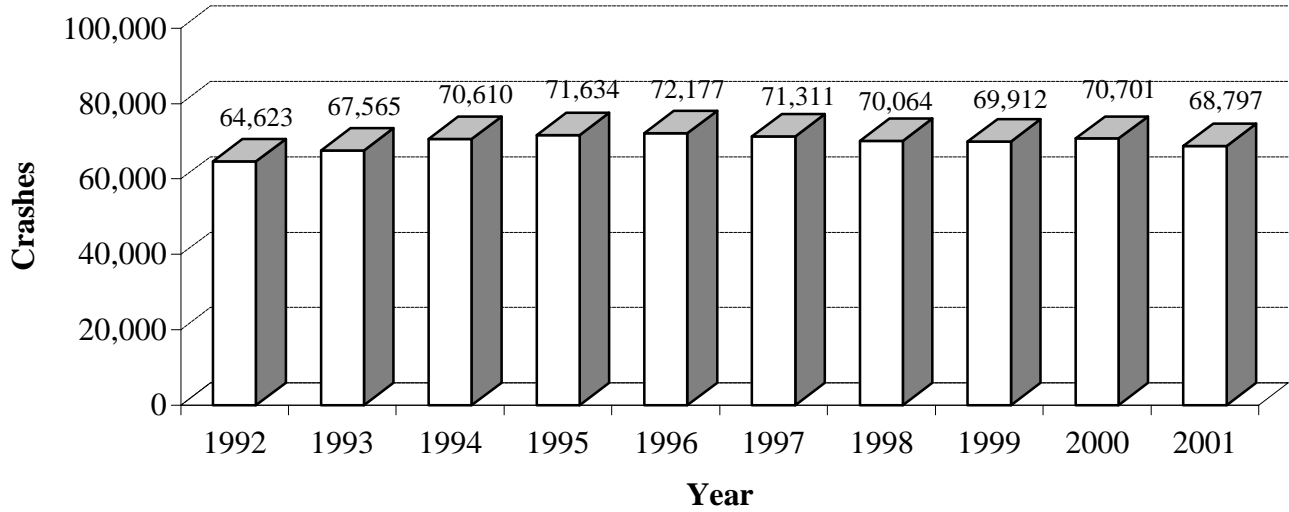


* Million vehicle miles

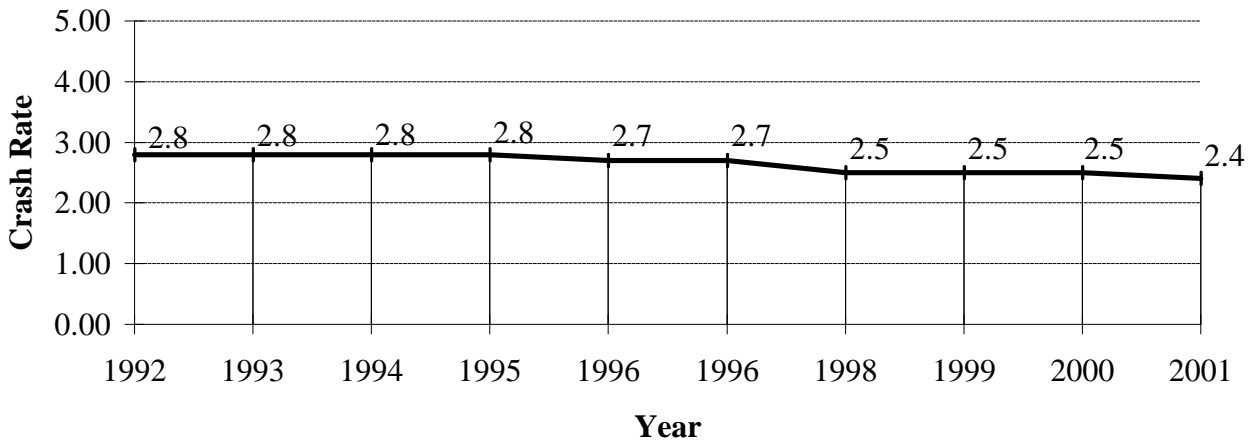
TOTAL CRASHES AND RATES

10 YEAR TRENDS

STATEWIDE CRASHES



CRASH RATE (CRASHES PER MVM*)

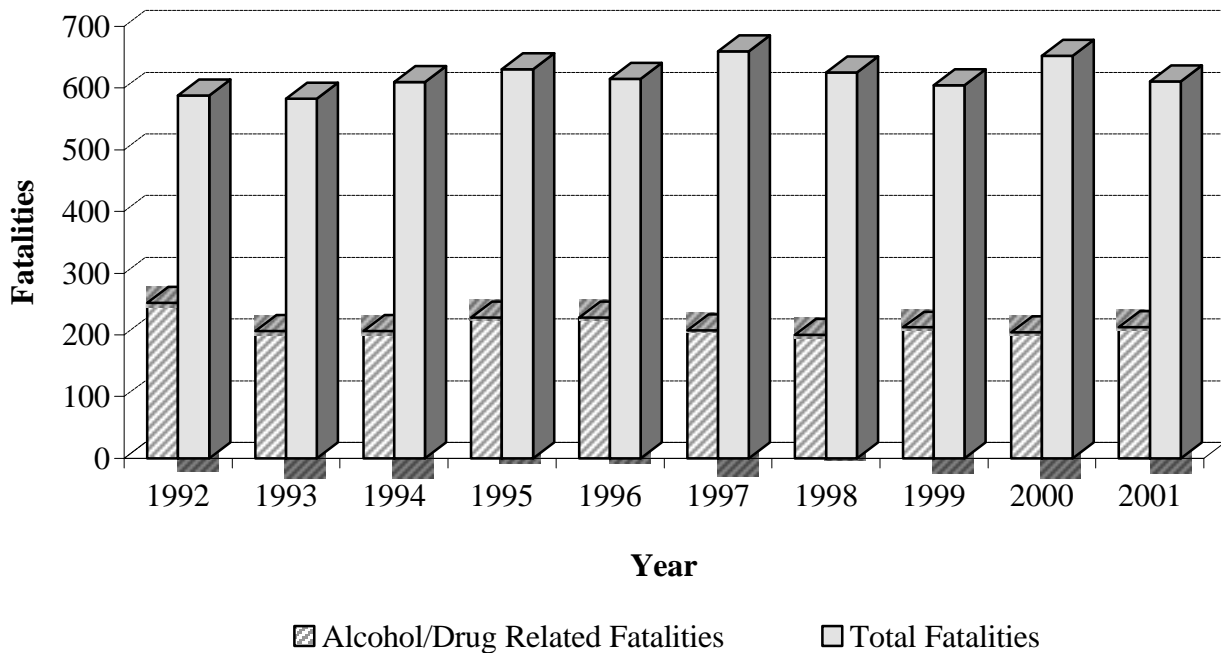


* Million vehicle miles

ALCOHOL/DRUG RELATED FATALITIES VS. TOTAL FATALITIES

10 YEAR TRENDS

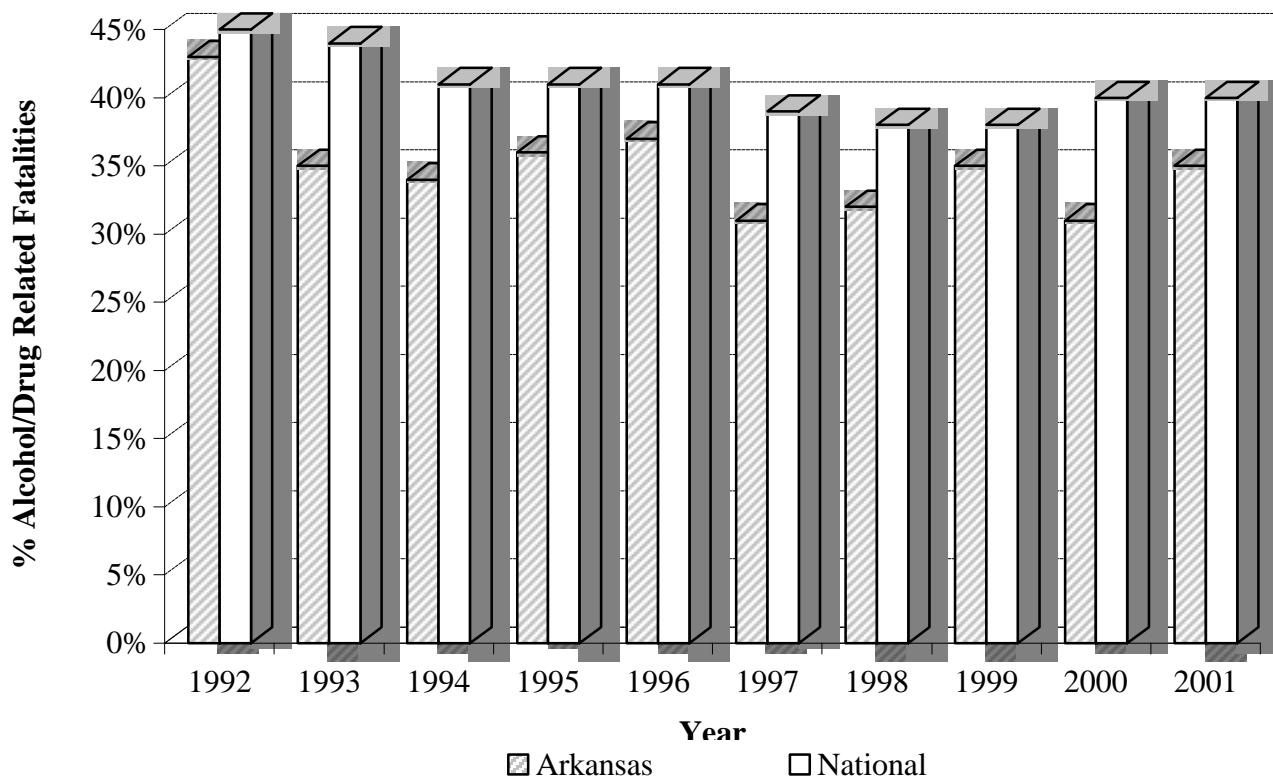
Year	Alcohol/Drug Related Fatalities	Total Fatalities	Alcohol/Drug Fatalities as a % of Total
1992	252	588	43%
1993	206	583	35%
1994	206	610	34%
1995	228	631	36%
1996	228	615	37%
1997	207	660	31%
1998	200	625	32%
1999	212	605	35%
2000	204	652	31%
2001	213	611	35%



PERCENT ALCOHOL/DRUG RELATED FATALITIES ARKANSAS VS. NATIONAL

10 YEAR TRENDS

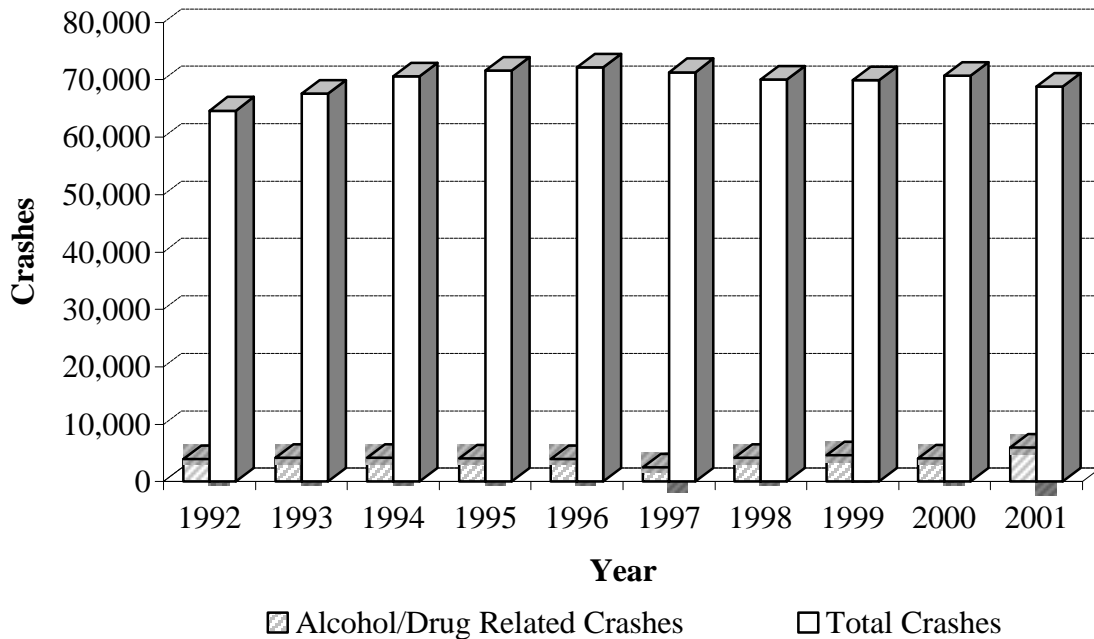
Year	Arkansas	National
1992	43%	45%
1993	35%	44%
1994	34%	41%
1995	36%	41%
1996	37%	41%
1997	31%	39%
1998	32%	38%
1999	35%	38%
2000	31%	40%
2001	35%	40%



ALCOHOL/DRUG RELATED CRASHES VS. TOTAL CRASHES

10 YEAR TRENDS

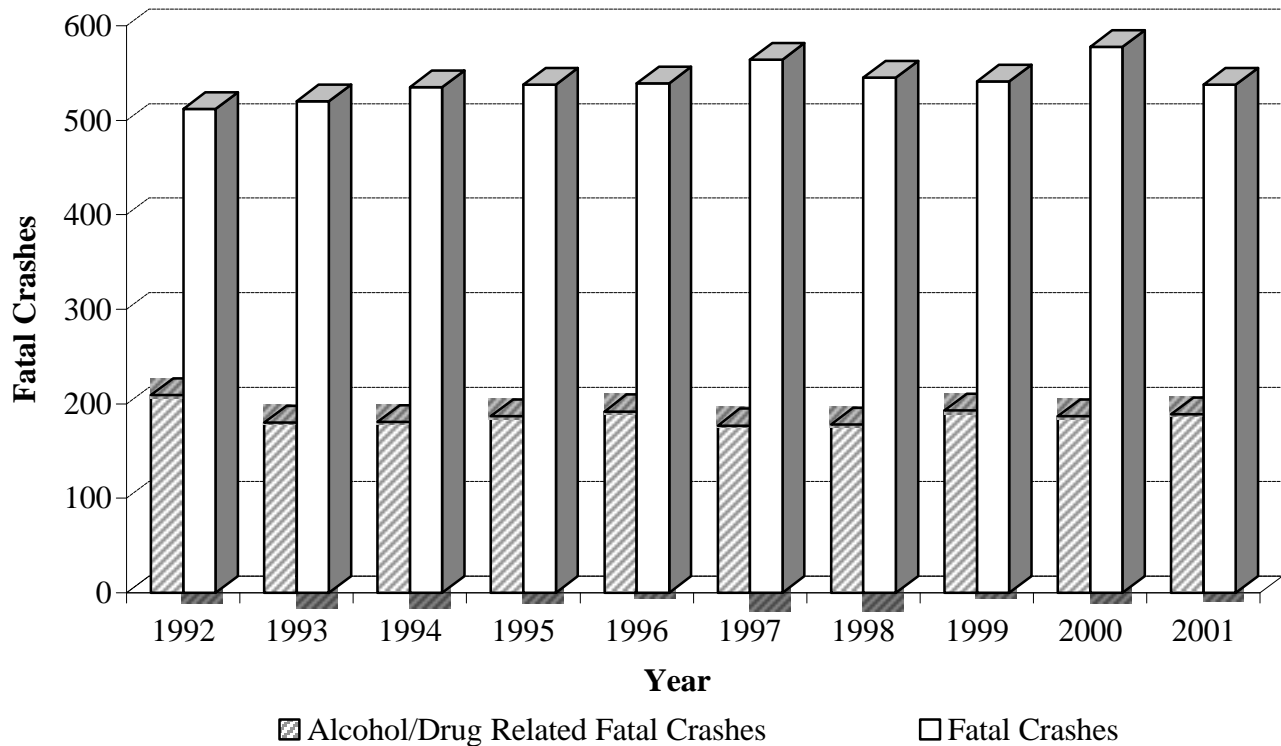
Year	Alcohol/Drug Related Crashes	Total Crashes	Alcohol/Drug as a % of Total Crashes
1992	3,906	64,623	6%
1993	4,144	67,565	6%
1994	4,134	70,610	6%
1995	4,054	71,634	6%
1996	3,921	72,177	5%
1997	2,452	71,311	3%
1998	4,125	70,064	6%
1999	4,645	69,912	7%
2000	4,097	70,701	6%
2001	5,912	68,797	9%



ALCOHOL/DRUG RELATED FATAL CRASHES VS. TOTAL FATAL CRASHES

10 YEAR TRENDS

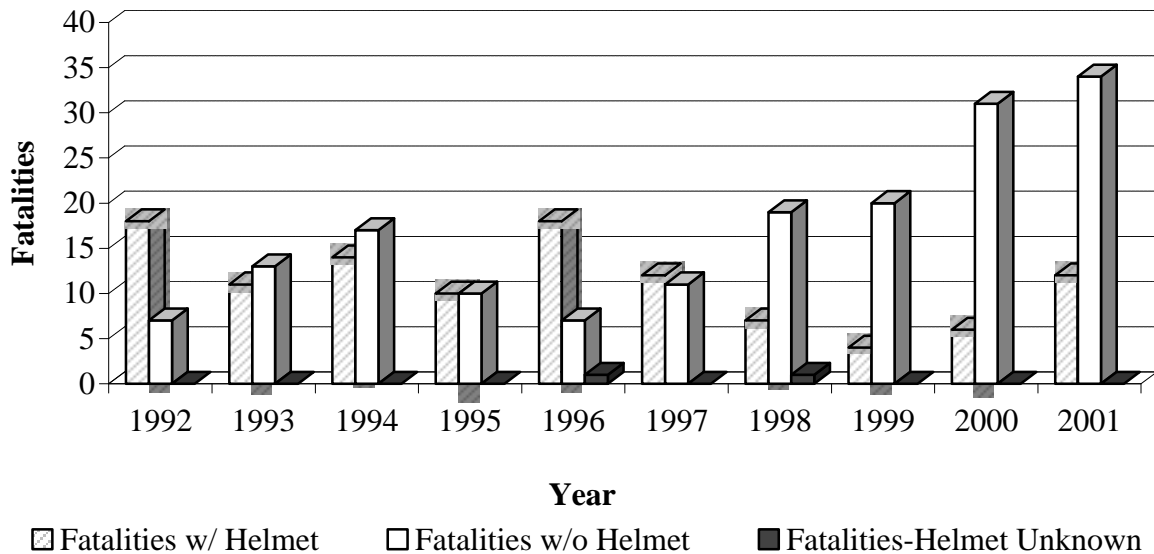
Year	Alcohol/Drug Related Fatal Crashes	Fatal Crashes	Alcohol/Drug Fatal Crashes as a % of Total
1992	209	512	41%
1993	180	520	35%
1994	181	535	34%
1995	187	538	35%
1996	192	539	36%
1997	177	564	31%
1998	178	545	33%
1999	193	541	36%
2000	187	578	32%
2001	189	538	35%



MOTORCYCLE CRASHES

10 YEAR TRENDS

Year	Total Crashes	Non Fatal Injuries	Fatal Crashes	Total Fatalities	Fatalities w/ Helmet	Fatalities w/o Helmet	Fatalities Helmet Use Unknown
1992	713	490	24	25	18	7	0
1993	683	482	22	24	11	13	0
1994	495	495	29	31	14	17	0
1995	657	471	20	20	10	10	0
1996	576	369	23	26	18	7	1
1997	571	499	23	23	12	11	0
1998	625	541	26	27	7	19	1
1999	647	588	23	24	4	20	0
2000	871	744	37	37	6	31	0
2001	1,032	919	41	46	12	34	0

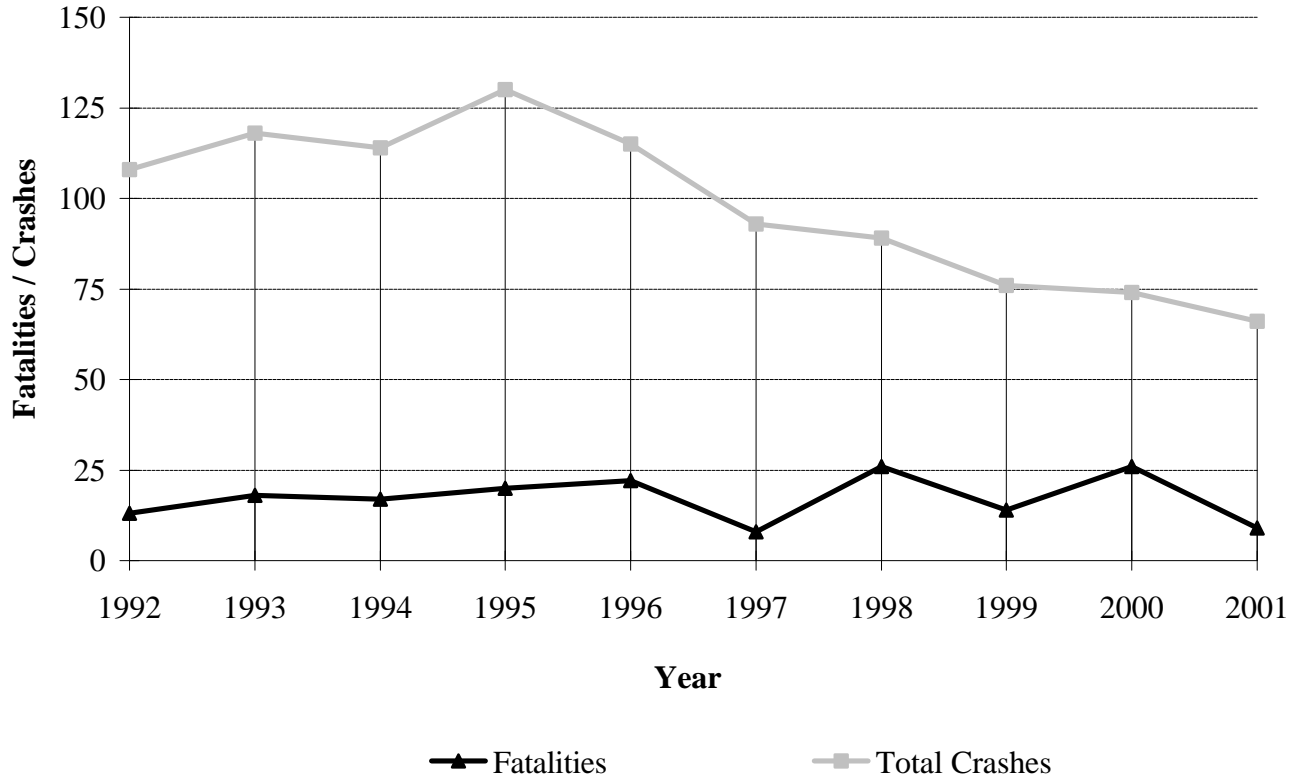


RAILROAD CRASHES, FATALITIES AND INJURIES

10 YEAR TRENDS

Year	Fatal Crashes	Nonfatal Injury Crashes	P.D.O. * Crashes	Total Crashes	Fatalities	Nonfatal Injuries
1992	12	43	53	108	13	67
1993	15	51	52	118	18	69
1994	13	54	47	114	17	78
1995	16	51	63	130	20	80
1996	20	41	54	115	22	52
1997	7	37	49	93	8	48
1998	20	30	39	89	25	49
1999	12	25	39	76	14	40
2000	17	21	36	74	26	36
2001	9	25	32	66	9	36

* Property Damage Only

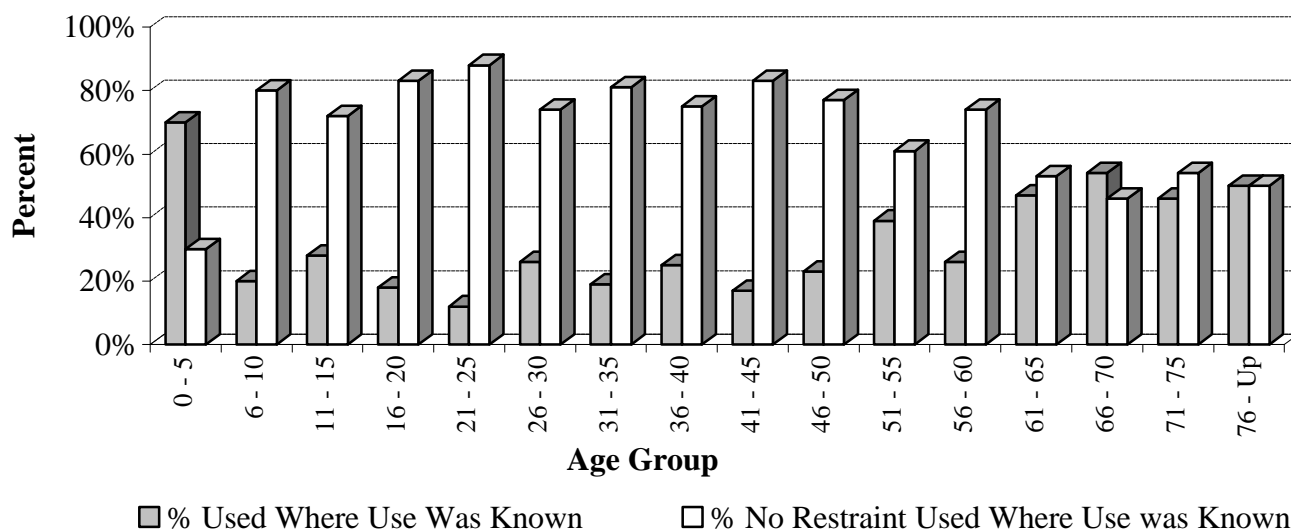


FATALITIES BY SAFETY RESTRAINT USAGE, PERCENT USED AND NOT USED IN 2001

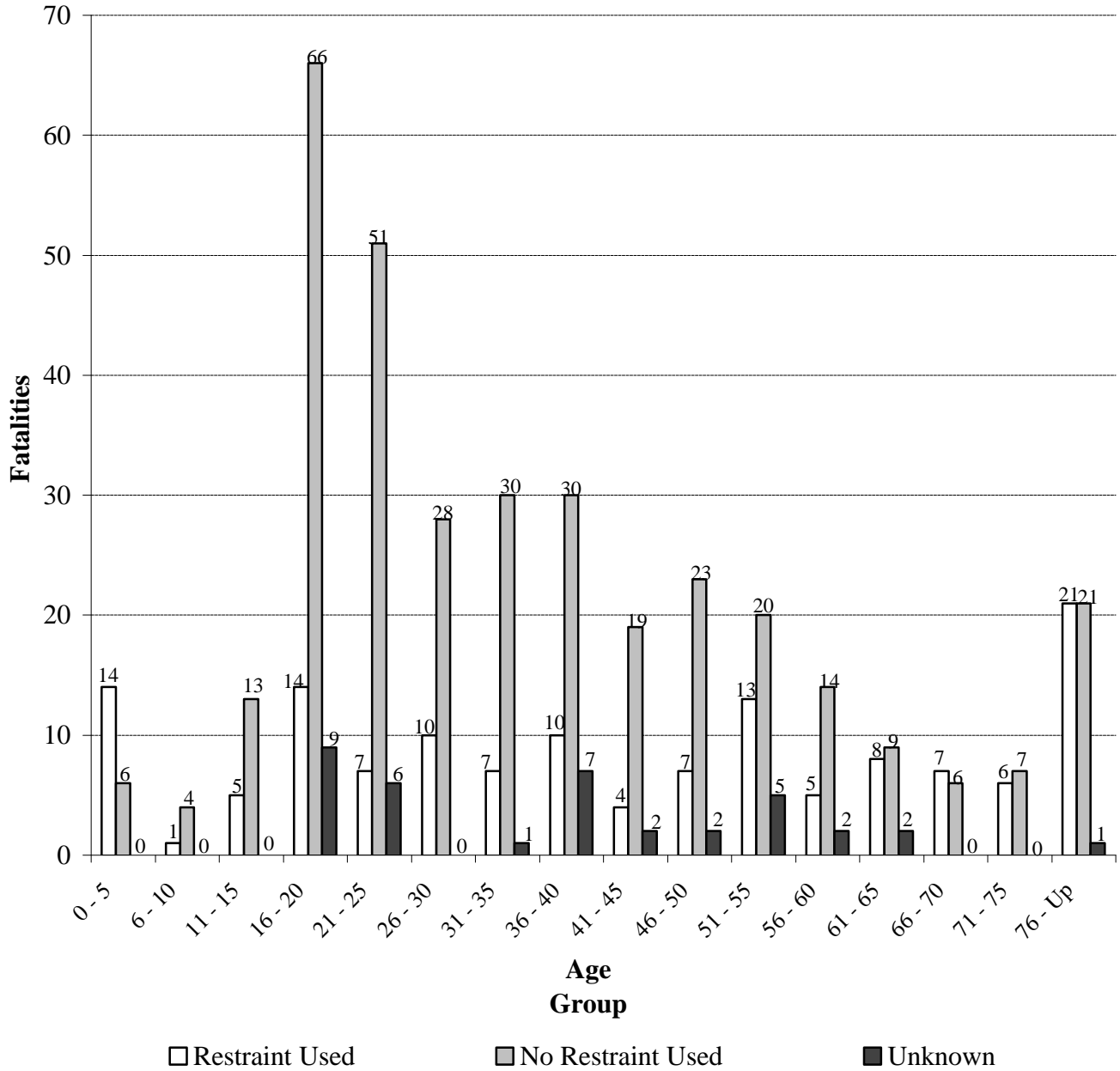
(Non-Motorist and Motorcycle Fatalities not included)

Age Group	Restraint Used	No Restraint Used	Unknown	% Restraint Used *	% No Restraint Used *
0 - 5	14	6	0	70%	30%
6 - 10	1	4	0	20%	80%
11 - 15	5	13	0	28%	72%
16 - 20	14	66	9	18%	83%
21 - 25	7	51	6	12%	88%
26 - 30	10	28	0	26%	74%
31 - 35	7	30	1	19%	81%
36 - 40	10	30	7	25%	75%
41 - 45	4	19	2	17%	83%
46 - 50	7	23	2	23%	77%
51 - 55	13	20	5	39%	61%
56 - 60	5	14	2	26%	74%
61 - 65	8	9	2	47%	53%
66 - 70	7	6	0	54%	46%
71 - 75	6	7	0	46%	54%
76 - Up	21	21	1	50%	50%
Total	139	347	37	29%	71%

* Percentage calculated using only fatalities where restraint use was known.

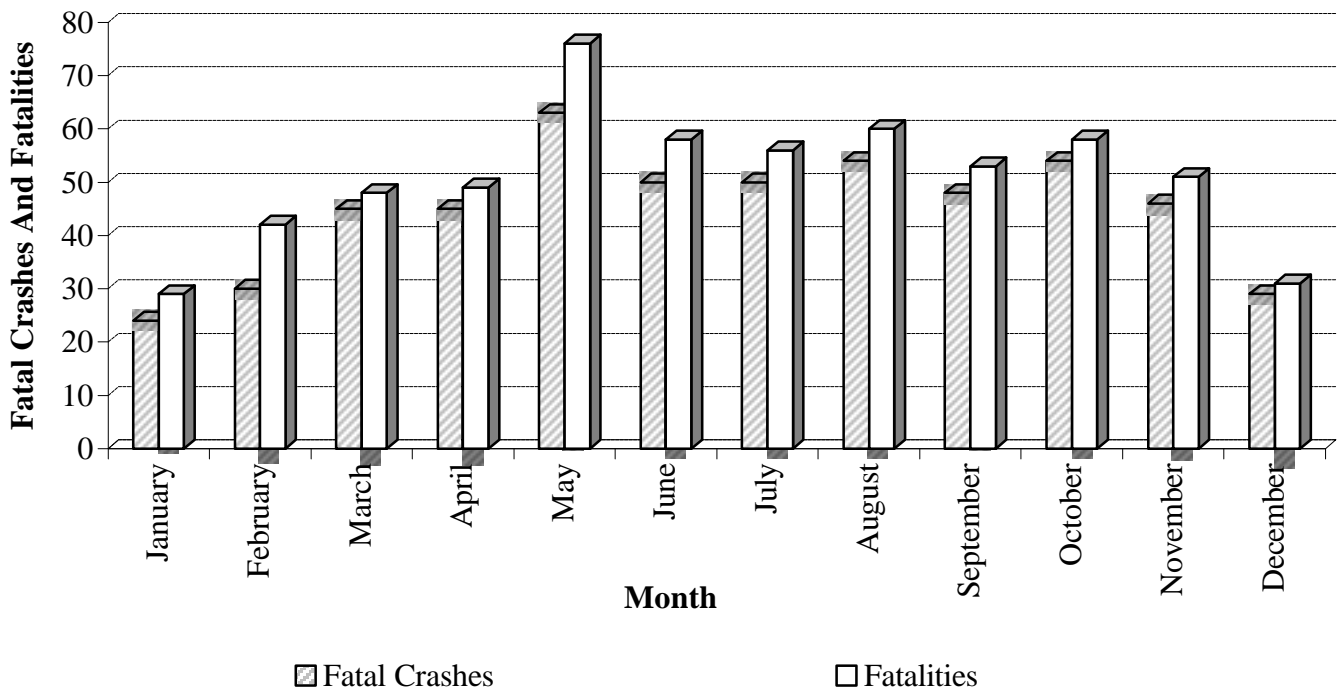


FATALITIES BY SAFETY RESTRAINT USAGE BY AGE GROUP IN 2001



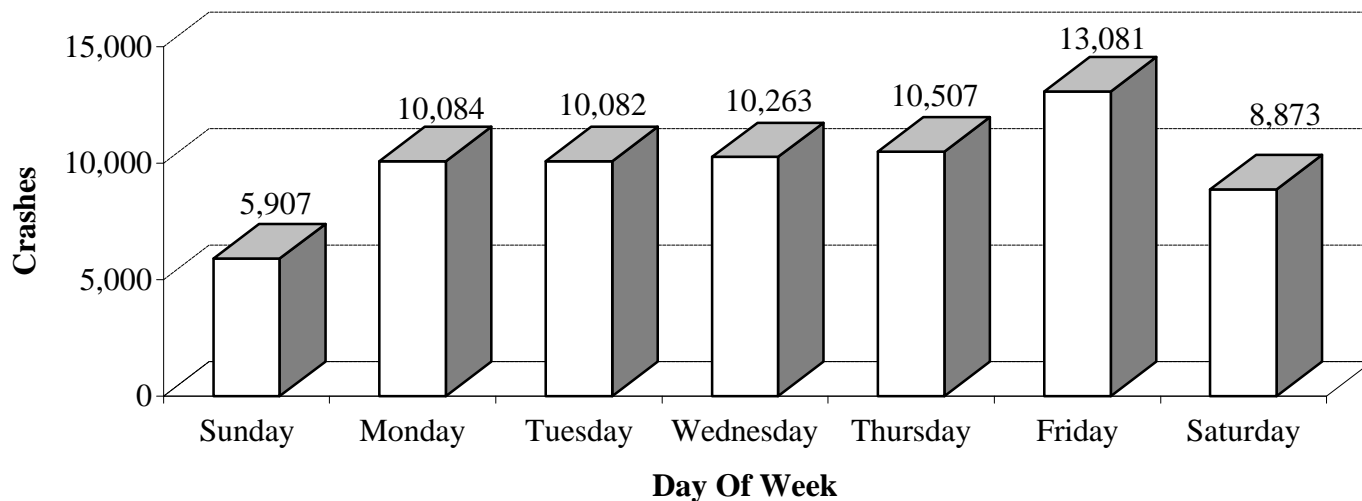
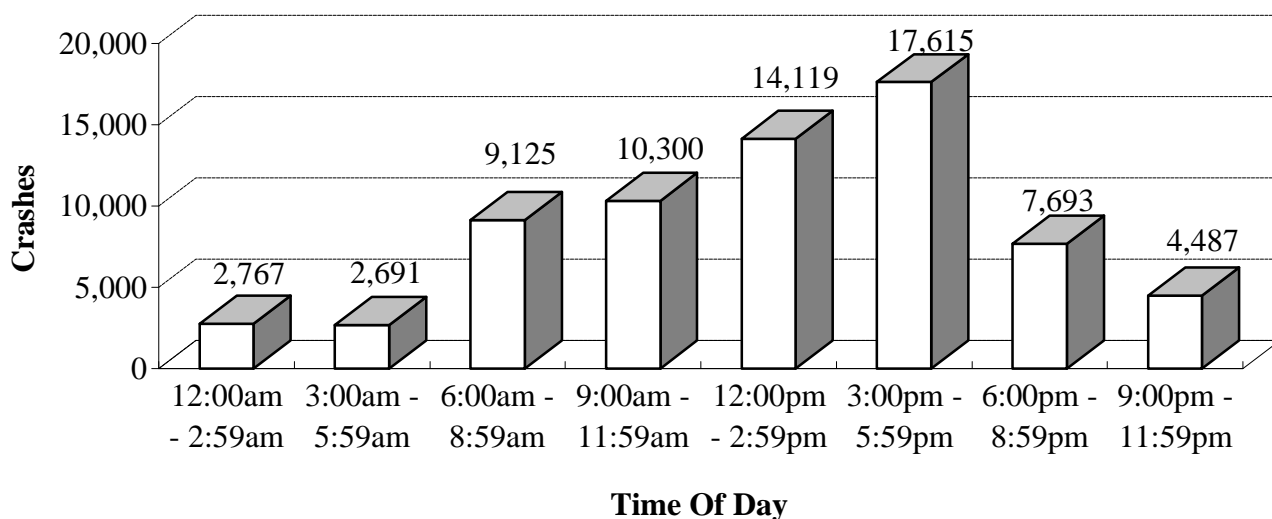
FATAL CRASHES AND FATALITIES BY MONTH IN 2001

Month	Fatal Crashes	Fatalities
January	24	29
February	30	42
March	45	48
April	45	49
May	63	76
June	50	58
July	50	56
August	54	60
September	48	53
October	54	58
November	46	51
December	29	31
Total	538	611



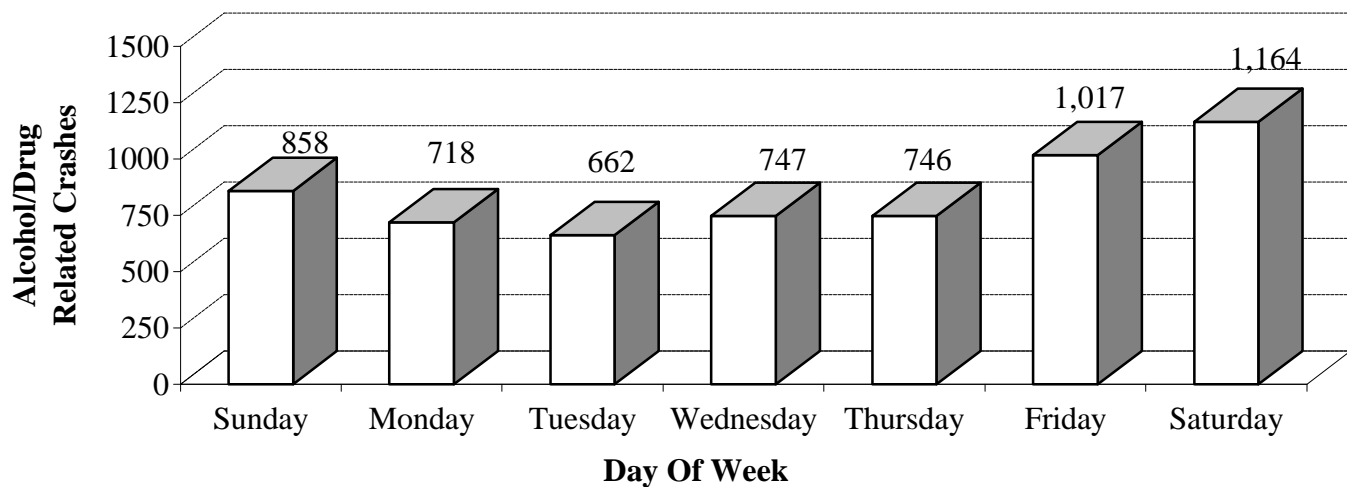
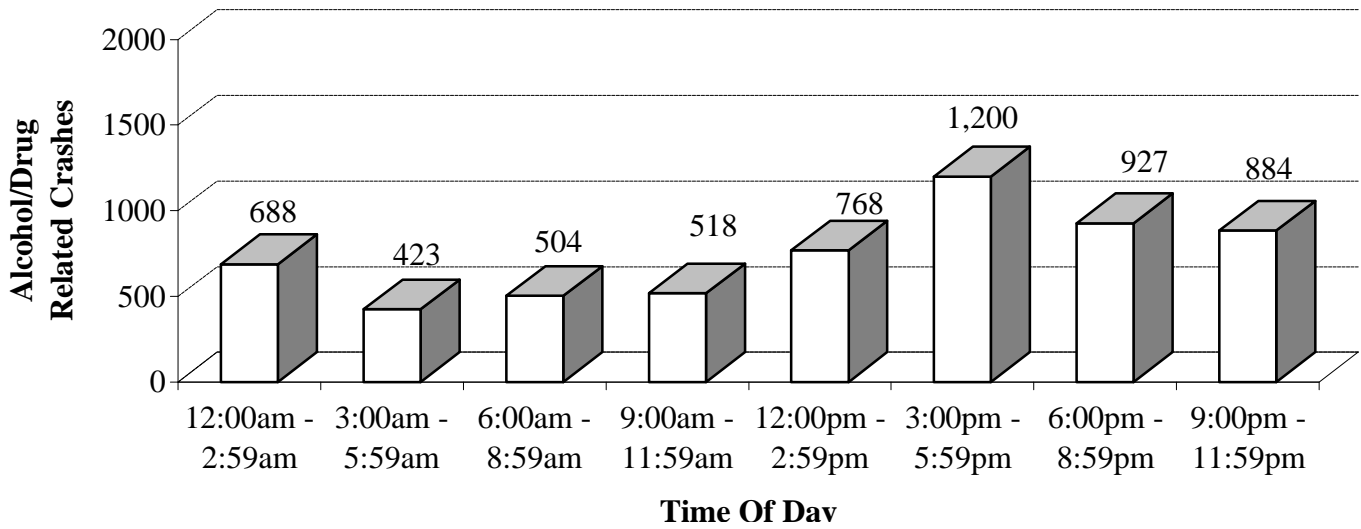
CRASHES BY TIME OF DAY AND DAY OF WEEK IN 2001

Time of Day	Sunday	Monday	Tuesday	Wednesday	Thursday	Friday	Saturday	Total
12:00am - 2:59am	569	299	259	296	342	377	625	2,767
3:00am - 5:59am	432	346	339	332	354	432	456	2,691
6:00am - 8:59am	414	1,563	1,599	1,587	1,649	1,648	665	9,125
9:00am - 11:59am	749	1,642	1,466	1,455	1,482	1,952	1,554	10,300
12:00pm - 2:59pm	1,175	2,081	2,053	2,065	2,139	2,783	1,823	14,119
3:00pm - 5:59pm	1,242	2,660	2,773	2,821	2,941	3,521	1,657	17,615
6:00pm - 8:59pm	882	998	1,085	1,169	1,041	1,360	1,158	7,693
9:00pm - 11:59pm	444	495	508	538	559	1,008	935	4,487
Total	5,907	10,084	10,082	10,263	10,507	13,081	8,873	68,797



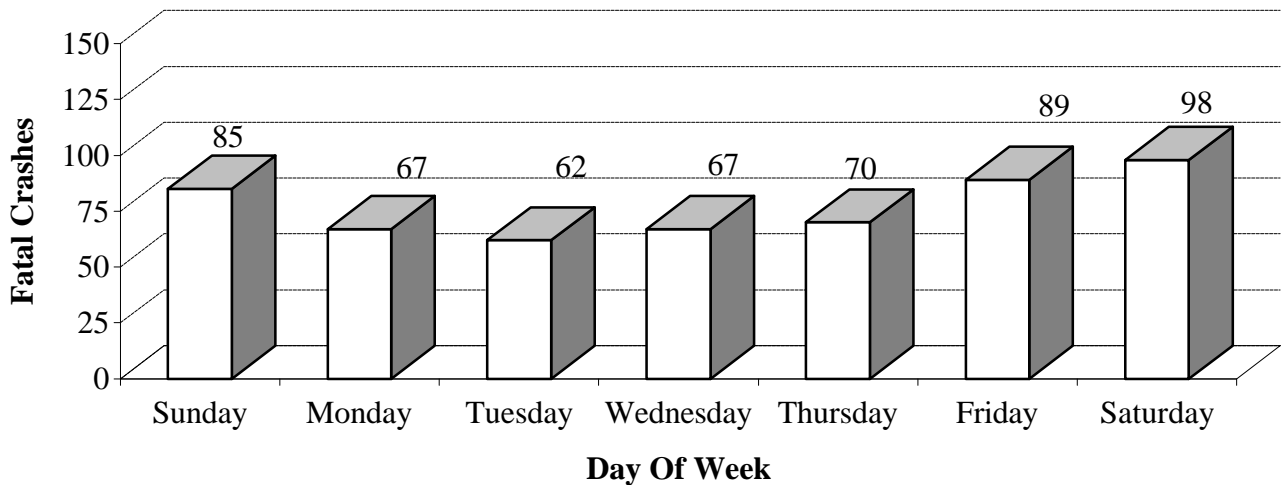
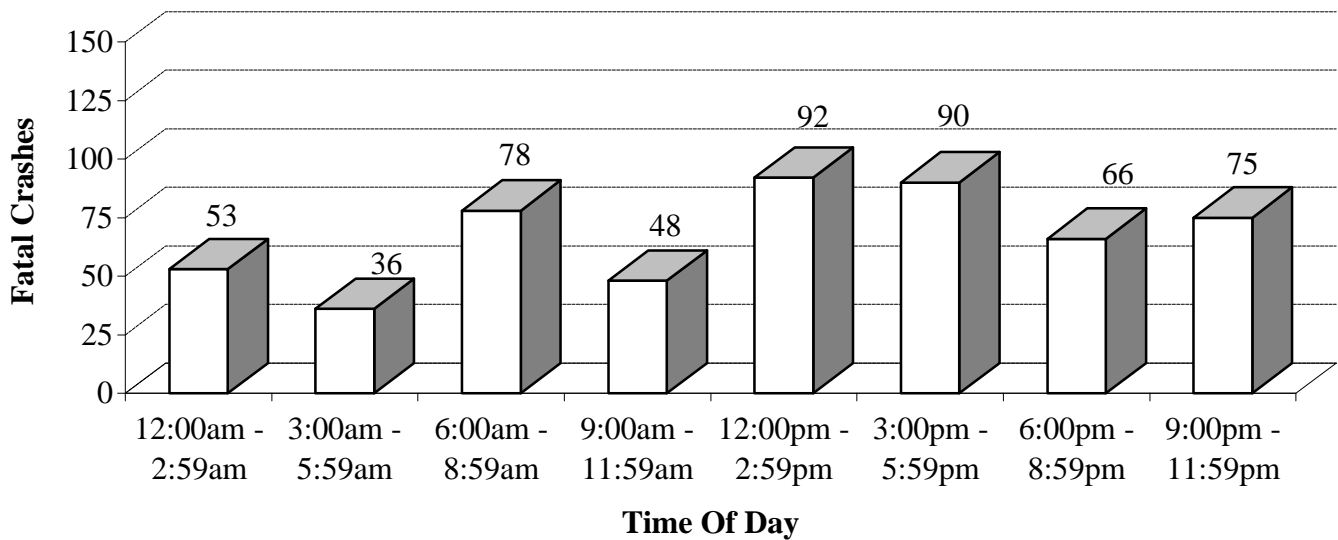
ALCOHOL/DRUG RELATED CRASHES BY TIME OF DAY AND DAY OF WEEK IN 2001

Time of Day	Sunday	Monday	Tuesday	Wednesday	Thursday	Friday	Saturday	Total
12:00am - 2:59am	188	48	51	51	70	81	199	688
3:00am - 5:59am	121	42	26	30	31	52	121	423
6:00am - 8:59am	65	70	58	88	73	68	82	504
9:00am - 11:59am	43	64	73	72	68	115	83	518
12:00pm - 2:59pm	91	105	91	96	108	141	136	768
3:00pm - 5:59pm	138	163	163	181	181	207	167	1,200
6:00pm - 8:59pm	133	116	105	130	116	145	182	927
9:00pm - 11:59pm	79	110	95	99	99	208	194	884
Total	858	718	662	747	746	1,017	1,164	5,912



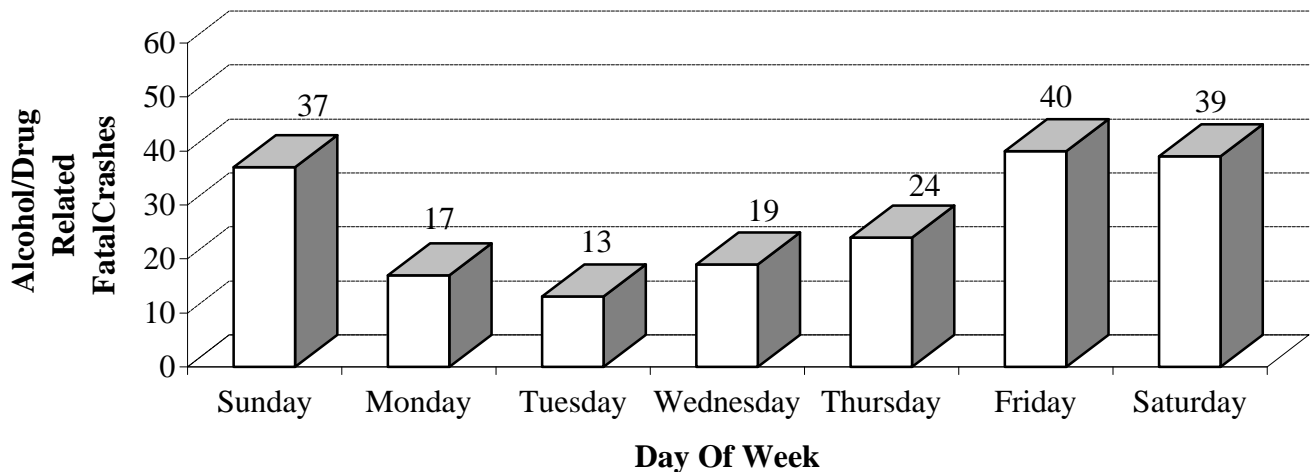
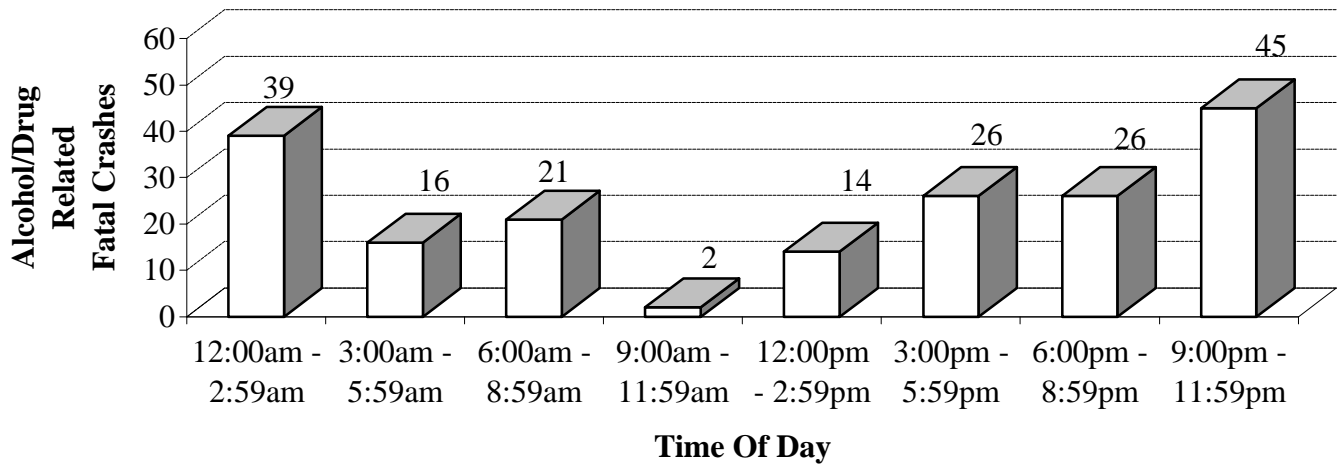
FATAL CRASHES BY TIME OF DAY AND DAY OF WEEK IN 2001

Time of Day	Sunday	Monday	Tuesday	Wednesday	Thursday	Friday	Saturday	Total
12:00am - 2:59am	14	3	5	2	9	5	15	53
3:00am - 5:59am	7	5	3	4	3	5	9	36
6:00am - 8:59am	13	9	11	10	9	11	15	78
9:00am - 11:59am	5	9	5	4	6	9	10	48
12:00pm - 2:59pm	12	11	11	15	13	15	15	92
3:00pm - 5:59pm	8	11	12	15	14	18	12	90
6:00pm - 8:59pm	19	9	10	7	9	6	6	66
9:00pm - 11:59pm	7	10	5	10	7	20	16	75
Total	85	67	62	67	70	89	98	538



ALCOHOL/DRUG RELATED FATAL CRASHES BY TIME OF DAY AND DAY OF WEEK IN 2001

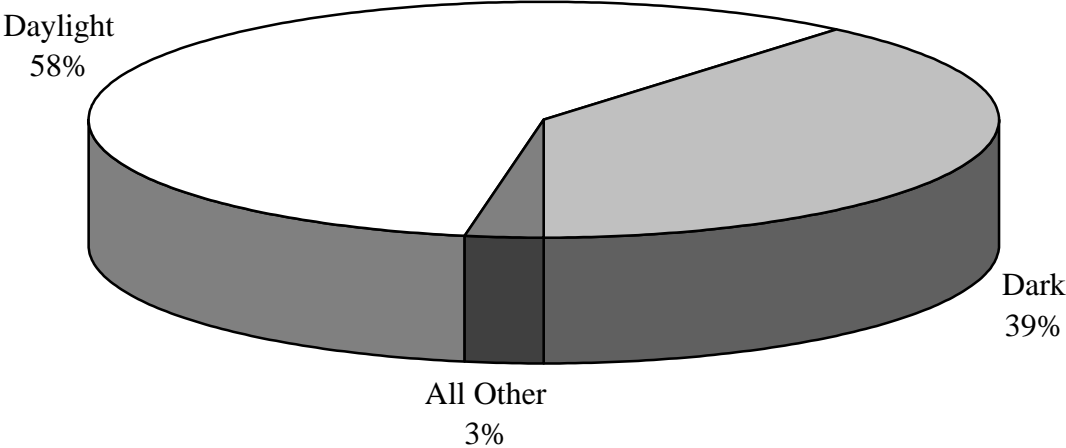
Time of Day	Sunday	Monday	Tuesday	Wednesday	Thursday	Friday	Saturday	Total
12:00am - 2:59am	12	2	2	2	6	3	12	39
3:00am - 5:59am	4	3	1	1	1	3	3	16
6:00am - 8:59am	5	0	2	3	4	3	4	21
9:00am - 11:59am	0	0	0	1	0	1	0	2
12:00pm - 2:59pm	3	2	0	1	2	3	3	14
3:00pm - 5:59pm	4	1	3	4	4	8	2	26
6:00pm - 8:59pm	6	3	4	3	4	2	4	26
9:00pm - 11:59pm	3	6	1	4	3	17	11	45
Total	37	17	13	19	24	40	39	189



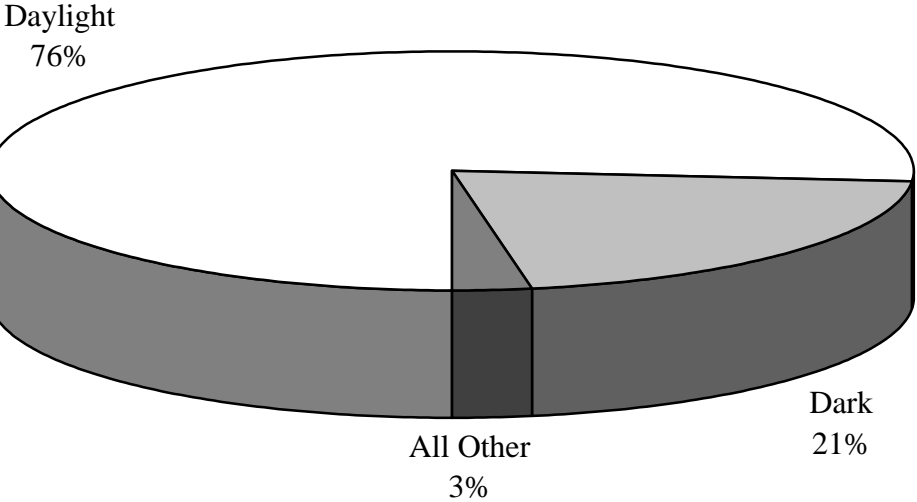
CRASHES BY LIGHTING CONDITIONS IN 2001

Light Condition	Fatal Crashes	Total Crashes
Daylight	312	52,358
Dark	209	14,360
Other	15	1,825
Unknown	2	254
Total	538	68,797

Fatal Crashes



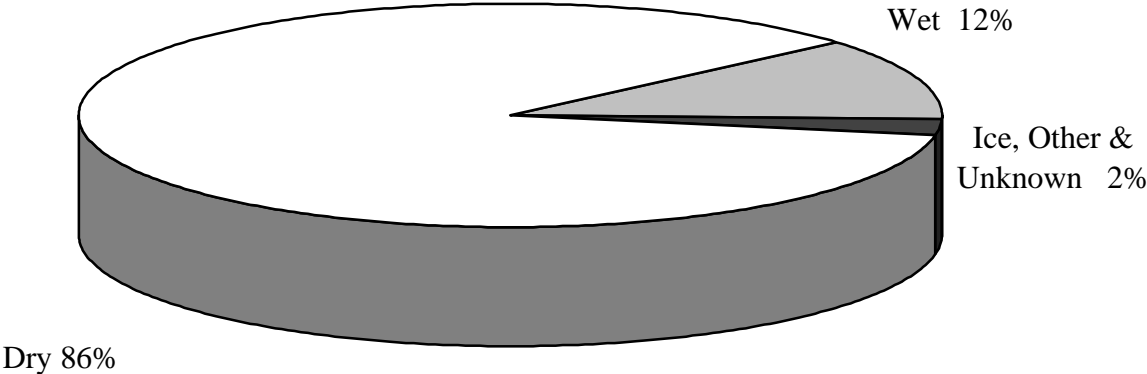
Total Crashes



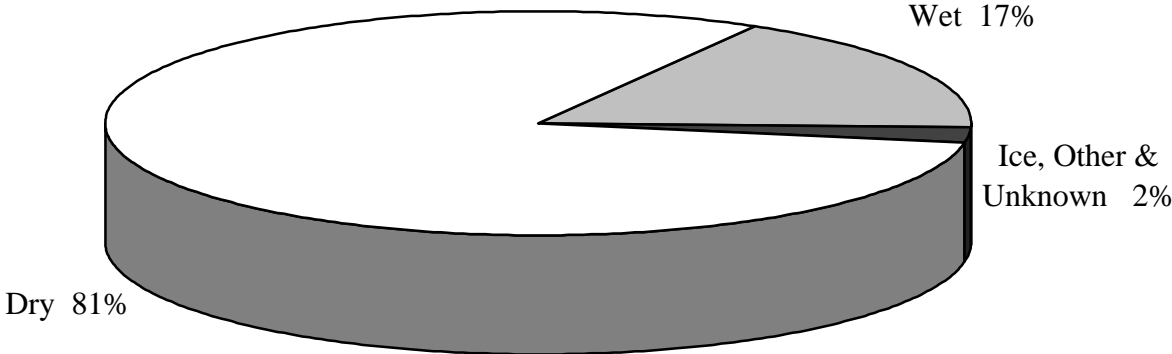
CRASHES BY ROAD SURFACE CONDITIONS IN 2001

Condition	Fatal Crashes	Total Crashes
Dry	462	55,337
Wet	64	11,952
Ice	4	1,001
Other	5	369
Unknown	3	138
Total	538	68,797

Fatal Crashes



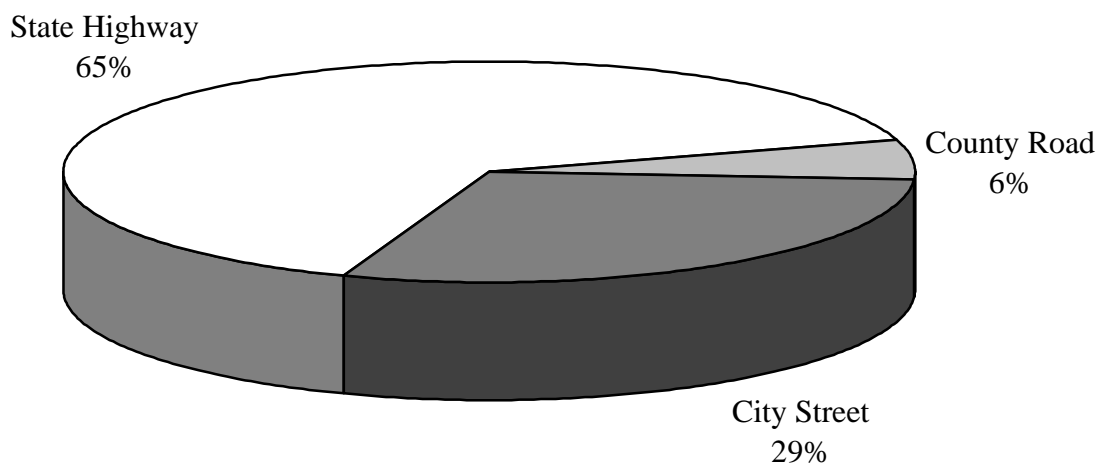
Total Crashes



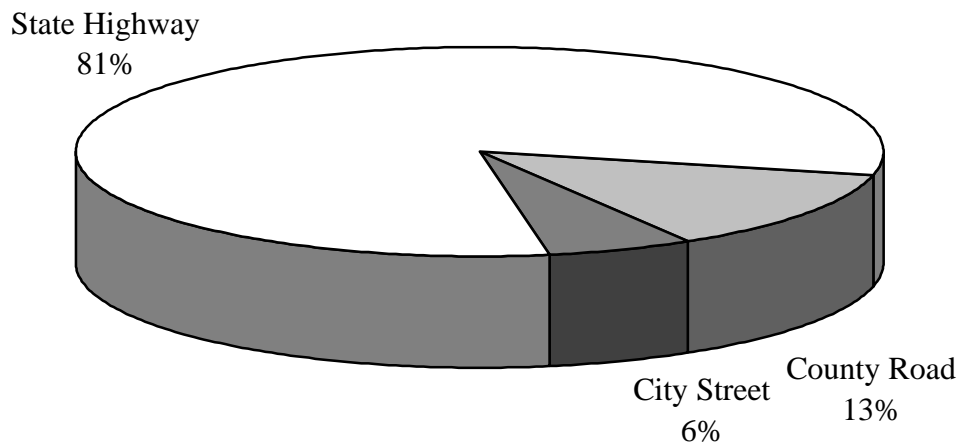
CRASHES BY ROAD SYSTEM IN 2001

Road System	Fatal Crashes	Nonfatal Injury Crashes	P.D.O. * Crashes	Total Crashes
State Highway	438	17,529	26,568	44,535
County Road	68	1,913	2,021	4,002
City Street	32	6,620	13,608	20,260
Totals	538	26,062	42,197	68,797

Total Crashes



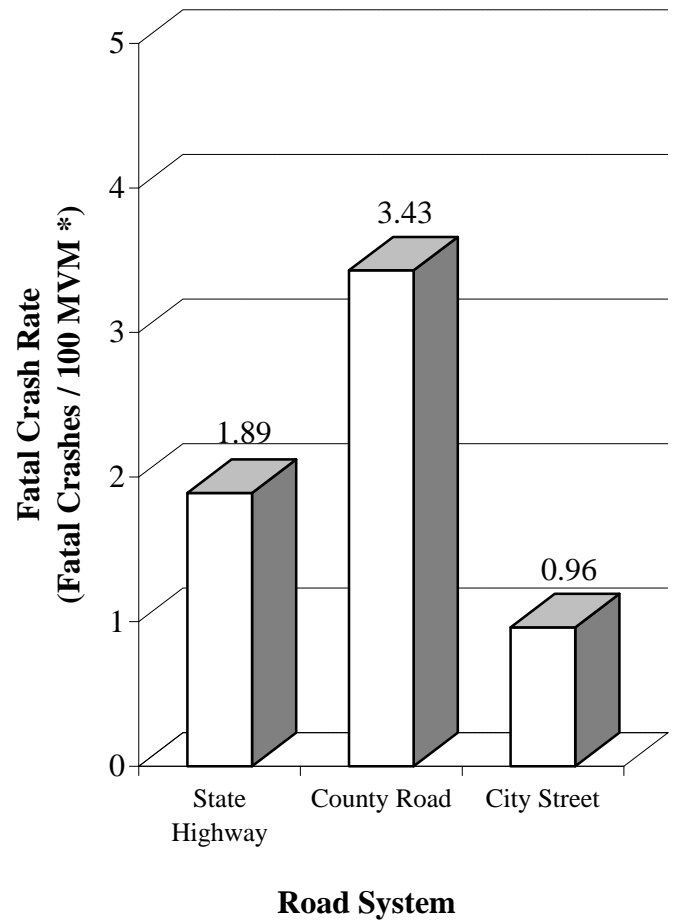
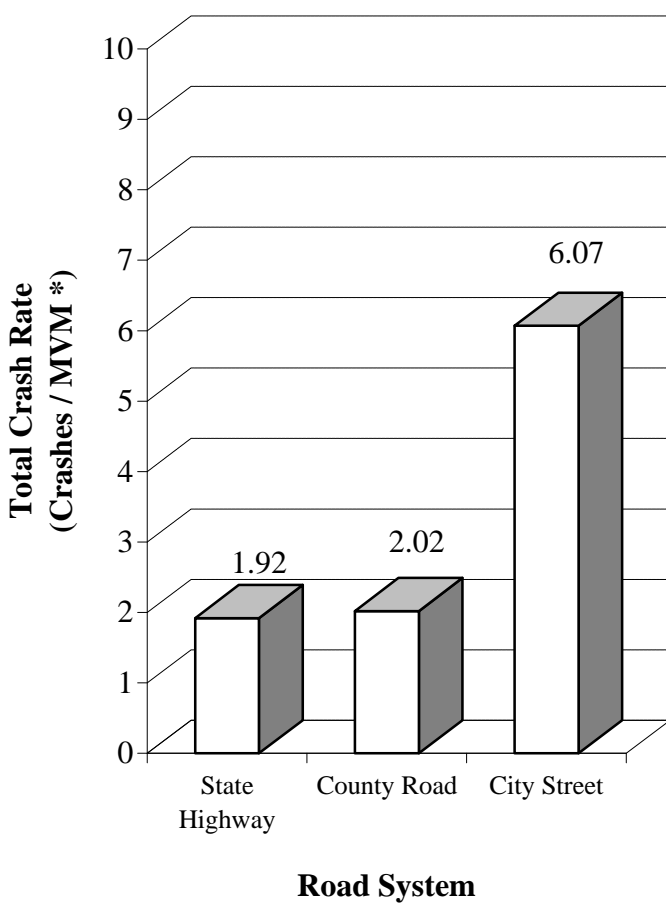
Fatal Crashes



* Property Damage Only

CRASH RATES BY ROAD SYSTEM IN 2001

Road System	Annual MVM*	Total Crashes	Crashes per MVM*	Fatal Crashes	Fatal Crashes per 100 MVM*
State Highway	23,141	44,535	1.92	438	1.89
County Road	1,982	4,002	2.02	68	3.43
City Street	3,340	20,260	6.07	32	0.96
Totals	28,463	68,797	2.42	538	1.89

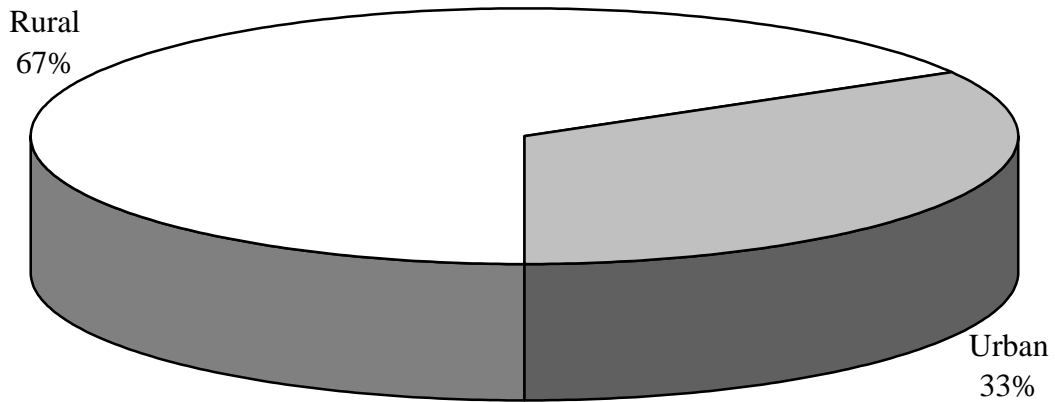


* Million vehicle miles

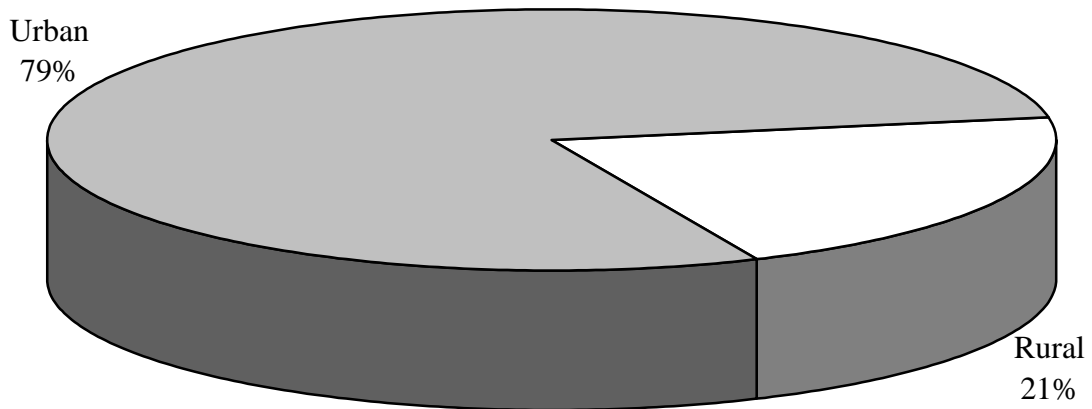
CRASHES BY RURAL/URBAN LOCATION IN 2001

Location	Fatal Crashes	Total Crashes
Rural	359	14,564
Urban	179	54,233
Total	538	68,797

Fatal Crashes

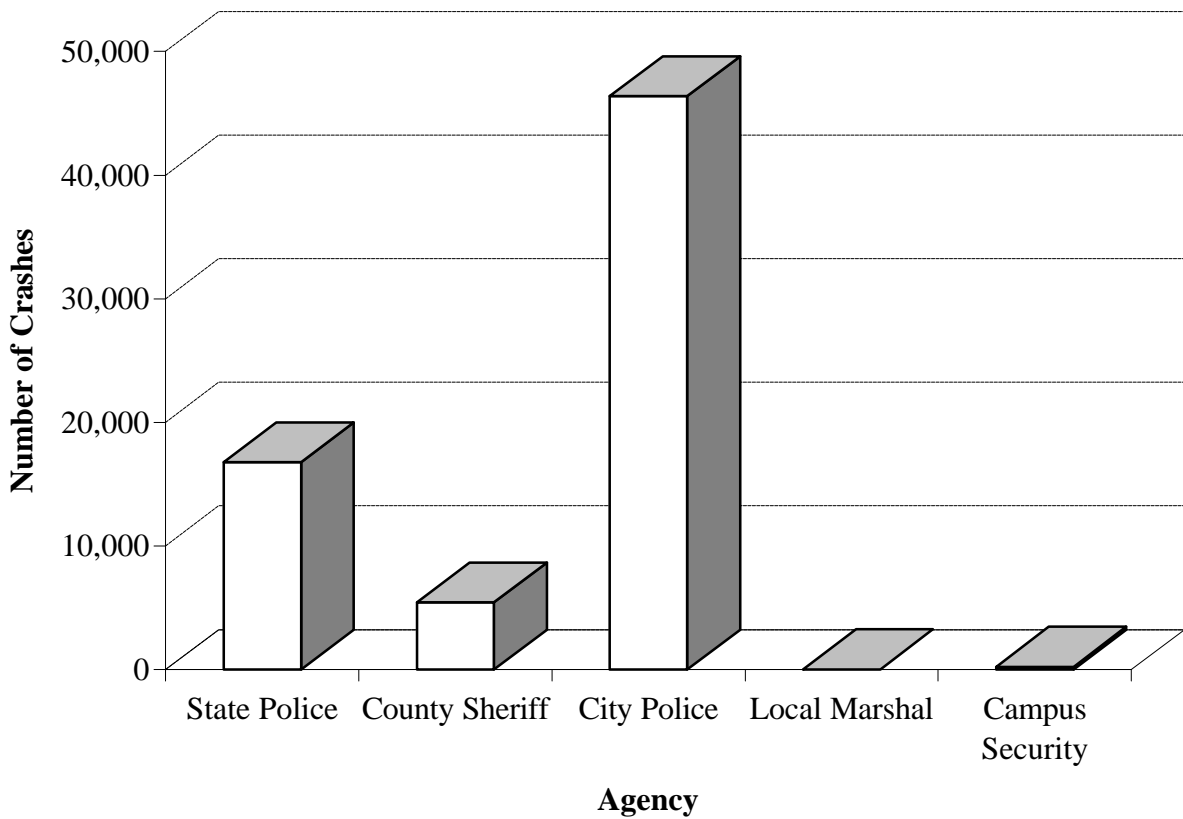


Total Crashes



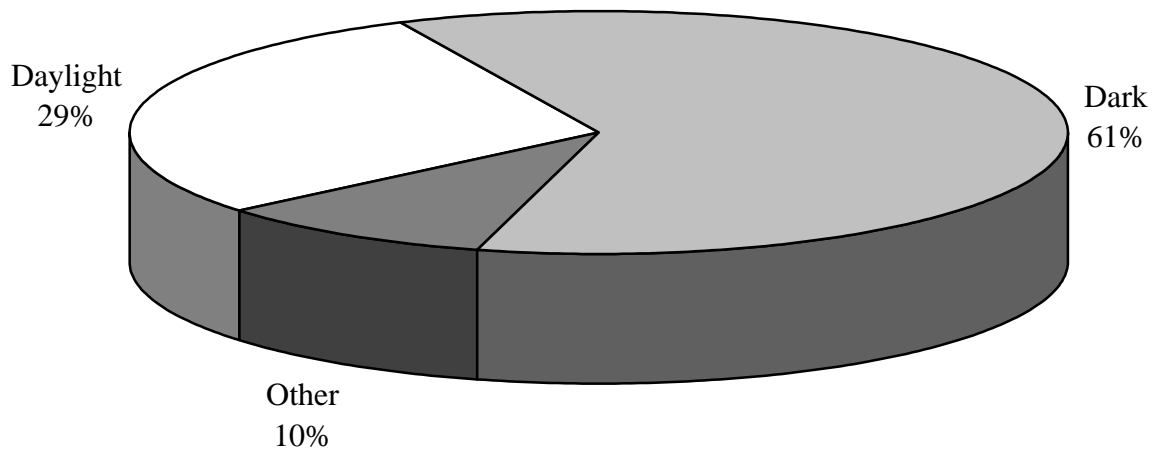
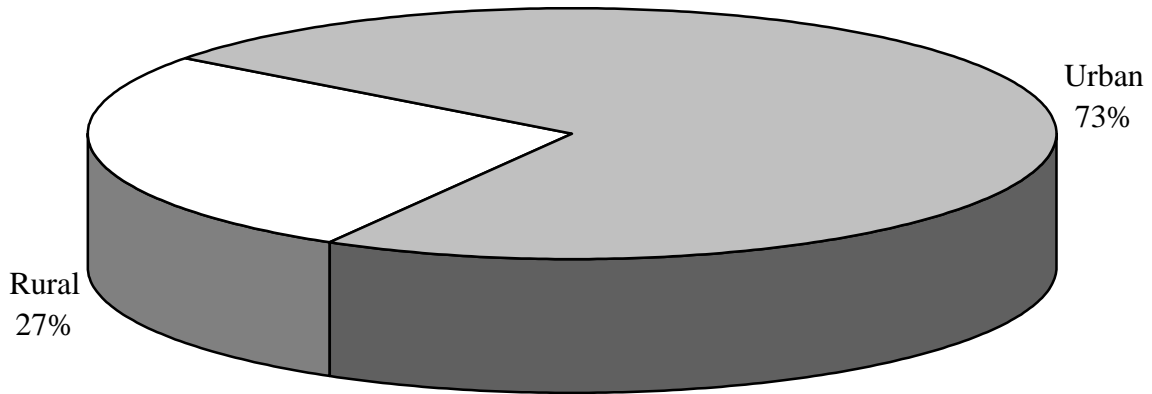
CRASHES BY INVESTIGATING AGENCY IN 2001

Agency	Total Crashes	% of Total
State Police	16,757	24.36 %
County Sheriff	5,431	7.89 %
City Police	46,381	67.42 %
Local Marshal	6	0.01 %
Campus Security	222	0.32 %
Total	68,797	100.00 %



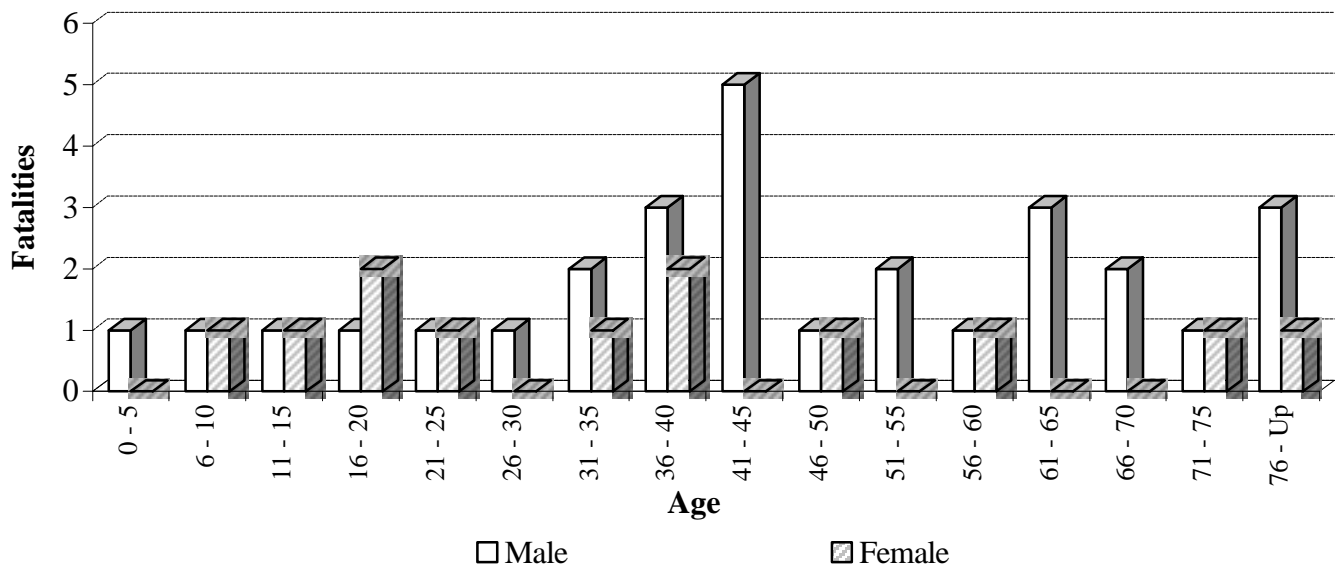
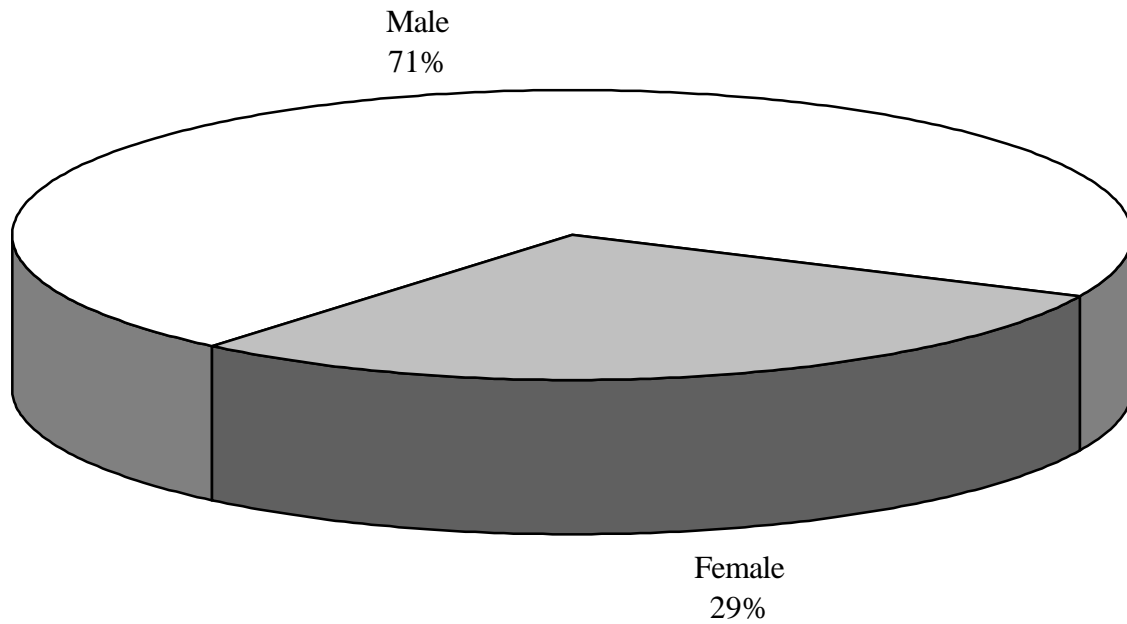
PEDESTRIAN FATALITIES IN 2001

Rural	Urban	Daylight	Dark	Other
11	30	12	25	4



PEDESTRIAN FATALITIES IN 2001 (Cont.)

Male	Female	Total
29	12	41



**ARKANSAS' 20 LARGEST CITIES
BY POPULATION
CRASHES, FATALITIES AND INJURIES
IN 2001**

City	Fatal Crashes	Fatalities	Injury Crashes	Injuries	P.D.O. * Crashes	Total Crashes
Little Rock	18	22	2,849	4,886	5,160	8,027
Fort Smith	8	8	1,390	2,489	2,680	4,078
North Little Rock	9	9	1,013	1,624	2,398	3,420
Fayetteville	3	3	778	1,265	2,125	2,906
Jonesboro	8	10	986	1,976	1,388	2,382
Pine Bluff	6	6	806	1,576	1,427	2,239
Springdale	6	7	546	963	1,361	1,913
Conway	5	5	499	912	857	1,361
Rogers	4	4	456	771	623	1,083
Hot Springs	4	4	624	898	1,747	2,375
Jacksonville	1	1	285	555	494	780
West Memphis	8	8	332	639	601	941
Texarkana	3	3	339	594	683	1,025
Russellville	2	2	302	459	929	1,233
Paragould	3	4	305	601	584	892
Benton	2	2	262	484	401	665
El Dorado	0	0	284	561	643	927
Sherwood	1	2	272	480	501	774
Bentonville	3	3	317	630	576	896
Van Buren	1	1	199	373	471	671

* Property Damage Only

TOTAL CRASHES, FATALITIES AND INJURIES BY COUNTY IN 2001

County	Fatal Crashes	Fatalities	Injury Crashes	Injuries	P.D.O. Crashes	Total Crashes
ARKANSAS	8	9	102	191	101	211
ASHLEY	4	10	196	361	299	499
BAXTER	5	6	319	626	485	809
BENTON	28	31	1,500	2,718	1,987	3,515
BOONE	8	8	324	649	453	785
BRADLEY	5	5	95	164	107	207
CALHOUN	4	4	40	55	56	100
CARROLL	5	6	261	552	289	555
CHICOT	6	8	31	72	27	64
CLARK	4	4	194	296	366	564
CLAY	5	6	106	209	97	208
CLEBURNE	5	7	200	352	212	417
CLEVELAND	2	3	35	53	35	72
COLUMBIA	11	13	231	462	354	596
CONWAY	5	6	151	298	221	377
CRAIGHEAD	11	13	1,183	2,306	1,570	2,764
CRAWFORD	9	12	468	846	846	1,323
CRITTENDEN	14	15	508	1,016	938	1,460
CROSS	3	3	136	266	170	309
DALLAS	0	0	86	157	58	144
DESHA	2	2	142	300	127	271
DREW	3	5	258	527	202	463
FAULKNER	10	10	731	1,339	1,149	1,890
FRANKLIN	2	2	107	192	134	243
FULTON	6	7	77	119	38	121
GARLAND	11	11	1,035	1,572	2,259	3,305
GRANT	2	2	103	181	171	276
GREENE	12	13	352	688	620	984
HEMPSTEAD	14	19	264	486	402	680
HOT SPRING	15	16	283	487	442	740
HOWARD	6	6	52	79	50	108
INDEPENDENCE	8	8	469	821	583	1,060
IZARD	4	5	38	70	9	51
JACKSON	4	4	103	191	126	233
JEFFERSON	16	16	1,017	1,922	1,716	2,749
JOHNSON	3	3	197	303	357	557
LAFAYETTE	2	2	67	120	34	103
LAWRENCE	5	5	181	376	174	360

**TOTAL CRASHES, FATALITIES AND INJURIES
BY COUNTY IN 2001 (CONT.)**

County	Fatal Crashes	Fatalities	Injury Crashes	Injuries	P.D.O. Crashes	Total Crashes
LEE	4	4	52	96	100	156
LINCOLN	3	3	79	155	51	133
LITTLE RIVER	2	2	85	164	72	159
LOGAN	4	6	161	324	132	297
LONOKE	13	15	438	828	658	1,109
MADISON	3	3	130	224	120	253
MARION	2	2	69	137	62	133
MILLER	5	5	413	716	764	1,182
MISSISSIPPI	9	10	420	743	557	986
MONROE	5	5	40	73	61	106
MONTGOMERY	7	8	31	54	15	53
NEVADA	0	0	64	108	48	112
NEWTON	4	4	75	103	46	125
OUACHITA	5	7	63	102	94	162
PERRY	0	0	52	77	43	95
PHILLIPS	3	4	224	599	180	407
PIKE	1	1	53	88	37	91
POINSETT	5	5	166	272	198	369
POLK	6	6	131	235	182	319
POPE	12	14	504	796	1,208	1,724
PRAIRIE	4	4	52	75	66	122
PULASKI	46	53	4,945	8,513	9,186	14,177
RANDOLPH	2	2	172	298	219	393
SALINE	14	16	609	1,126	1,118	1,741
SCOTT	5	6	80	134	121	206
SEARCY	1	1	33	45	41	75
SEBASTIAN	13	13	1,541	2,783	2,922	4,476
SEVIER	6	6	170	345	144	320
SHARP	7	8	71	126	98	176
ST. FRANCIS	14	20	261	479	445	720
STONE	3	3	26	35	37	66
UNION	7	8	445	830	798	1,250
VAN BUREN	8	8	86	152	116	210
WASHINGTON	22	23	1,764	2,976	3,941	5,727
WHITE	18	21	749	1,456	849	1,616
WOODRUFF	1	1	17	30	20	38
YELL	7	9	149	284	184	340
TOTALS	538	611	26,062	47,003	42,197	68,797

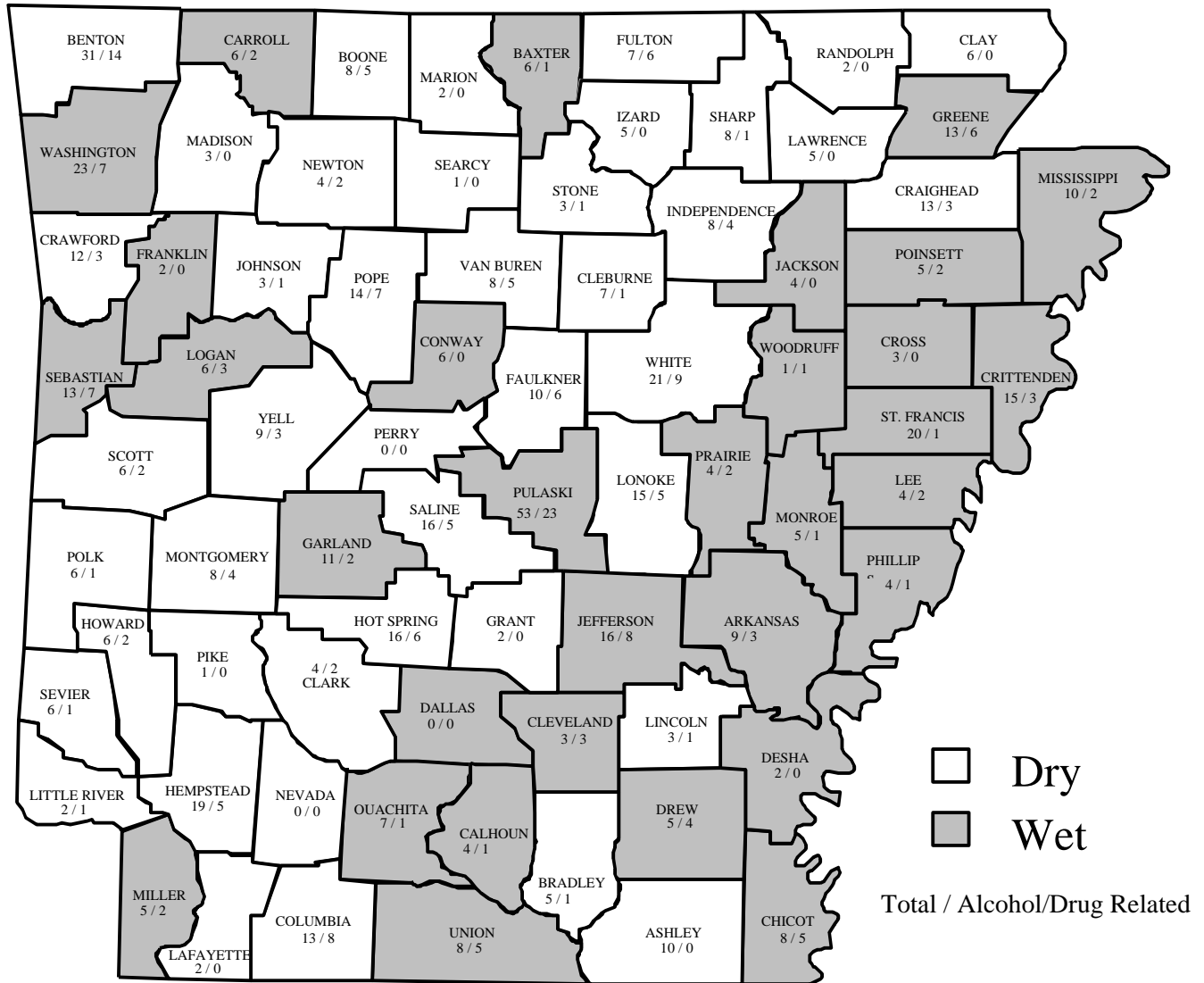
ALCOHOL/DRUG RELATED CRASHES, FATALITIES AND INJURIES BY COUNTY IN 2001

County	Fatal Crashes	Fatalities	Injury Crashes	Injuries	P.D.O. Crashes	Total Crashes
ARKANSAS	2	3	11	24	11	24
ASHLEY	0	0	27	40	32	59
BAXTER	1	1	43	83	35	79
BENTON	13	14	165	269	128	306
BOONE	5	5	27	56	9	41
BRADLEY	1	1	13	19	9	23
CALHOUN	1	1	3	6	1	5
CARROLL	2	2	30	46	25	57
CHICOT	3	5	6	14	3	12
CLARK	2	2	24	40	17	43
CLAY	0	0	15	24	6	21
CLEBURNE	1	1	25	43	11	37
CLEVELAND	2	3	7	13	3	12
COLUMBIA	6	8	35	70	26	67
CONWAY	0	0	17	33	22	39
CRAIGHEAD	2	3	96	174	60	158
CRAWFORD	2	3	53	108	58	113
CRITTENDEN	3	3	58	98	71	132
CROSS	0	0	18	26	11	29
DALLAS	0	0	11	21	7	18
DESHA	0	0	20	35	7	27
DREW	2	4	26	48	8	36
FAULKNER	6	6	78	152	82	166
FRANKLIN	0	0	13	22	15	28
FULTON	5	6	19	26	4	28
GARLAND	2	2	123	184	152	277
GRANT	0	0	15	23	12	27
GREENE	5	6	27	47	22	54
HEMPSTEAD	5	5	26	48	22	53
HOT SPRING	5	6	38	68	22	65
HOWARD	2	2	7	10	8	17
INDEPENDENCE	4	4	48	84	22	74
IZARD	0	0	4	9	2	6
JACKSON	0	0	16	25	3	19
JEFFERSON	8	8	102	185	106	216
JOHNSON	1	1	30	43	32	63
LAFAYETTE	0	0	13	19	1	14
LAWRENCE	0	0	10	26	9	19

**ALCOHOL/DRUG RELATED CRASHES, FATALITIES
AND INJURIES BY COUNTY IN 2001 (CONT.)**

County	Fatal Crashes	Fatalities	Injury Crashes	Injuries	P.D.O. Crashes	Total Crashes
LEE	2	2	5	16	8	15
LINCOLN	1	1	11	24	7	19
LITTLE RIVER	1	1	9	20	5	15
LOGAN	2	3	34	65	13	49
LONOKE	4	5	60	118	39	103
MADISON	0	0	19	30	13	32
MARION	0	0	11	17	7	18
MILLER	2	2	65	118	69	136
MISSISSIPPI	2	2	36	57	24	62
MONROE	1	1	4	7	4	9
MONTGOMERY	4	4	4	9	0	8
NEVADA	0	0	8	22	3	11
NEWTON	2	2	13	19	5	20
OUACHITA	1	1	15	27	3	19
PERRY	0	0	11	13	4	15
PHILLIPS	1	1	26	78	13	40
PIKE	0	0	4	4	4	8
POINSETT	2	2	16	18	15	33
POLK	1	1	14	27	6	21
POPE	7	7	59	106	62	128
PRAIRIE	2	2	7	8	2	11
PULASKI	20	23	529	943	667	1216
RANDOLPH	0	0	19	33	7	26
SALINE	5	5	68	116	55	128
SCOTT	2	2	23	37	10	35
SEARCY	0	0	8	11	7	15
SEBASTIAN	7	7	145	257	193	345
SEVIER	1	1	18	29	11	30
SHARP	1	1	12	17	7	20
ST. FRANCIS	1	1	25	50	27	53
STONE	1	1	7	8	9	17
UNION	4	5	67	114	80	151
VAN BUREN	5	5	13	25	10	28
WASHINGTON	7	7	207	365	251	465
WHITE	7	9	60	112	35	102
WOODRUFF	1	1	1	1	1	3
YELL	1	3	26	61	15	42
Totals	189	213	2,958	5,243	2,765	5,912

FATALITIES VS. ALCOHOL/DRUG RELATED FATALITIES IN 2001 BY COUNTY



County	Number of Counties	Fatalities	Alcohol/Drug Related Fatalities	% Alcohol/Drug Related
Wet	32	281	98	35%
Dry	43	330	115	35%