

ARKANSAS

2002

TRAFFIC CRASH STATISTICS



Prepared by:
Arkansas State Police
Highway Safety Office
1 State Police Plaza Drive
Little Rock, AR 72209
www.asp.state.ar.us

TABLE OF CONTENTS

INTRODUCTION

2002 ARKANSAS CRASH SUMMARY.....	2
----------------------------------	---

FIVE AND TEN YEAR TRENDS

FATAL CRASHES AND RATES.....	3
FATALITIES AND RATES.....	4
FATALITIES BY AGE GROUP, 1997-2002.....	5
NONFATAL INJURIES, RATES AND INJURIES BY SEVERITY.....	6 - 7
TOTAL CRASHES AND RATES.....	8
ALCOHOL/DRUG RELATED FATALITIES VS. TOTAL FATALITIES.....	9
PERCENT ALCOHOL/DRUG RELATED FATALITIES ARKANSAS VS. NATIONAL.....	10
ALCOHOL/DRUG RELATED CRASHES VS. TOTAL CRASHES.....	11
ALCOHOL/DRUG RELATED FATAL CRASHES VS. TOTAL FATAL CRASHES.....	12
MOTORCYCLE CRASHES.....	13
RAILROAD CRASHES, FATALITIES AND INJURIES.....	14

CURRENT YEAR (2002)

FATALITIES BY SAFETY RESTRAINT USAGE	
PERCENT USED AND NOT USED.....	15
FATALITIES BY SAFETY RESTRAINT USAGE BY AGE GROUP.....	16
FATALITIES BY SAFETY RESTRAINT USAGE BY AGE.....	17
FATALITIES BY AGE AND PERSON TYPE.....	18
ALCOHOL/DRUG RELATED FATALITIES BY AGE AND PERSON TYPE.....	19
FATAL CRASHES AND FATALITIES BY MONTH.....	20
CRASHES BY TIME OF DAY AND DAY OF WEEK.....	21
ALCOHOL/DRUG RELATED CRASHES BY TIME OF DAY AND	
DAY OF WEEK.....	22
FATAL CRASHES BY TIME OF DAY AND DAY OF WEEK.....	23
ALCOHOL/DRUG RELATED FATAL CRASHES BY TIME OF DAY AND	
DAY OF WEEK.....	24
CRASHES BY LIGHTING CONDITIONS.....	25
CRASHES BY ROAD SURFACE CONDITIONS.....	26
CRASHES BY ROAD SYSTEM.....	27
CRASH RATES BY ROAD SYSTEM.....	28
CRASHES BY RURAL/URBAN LOCATION.....	29
CRASHES BY INVESTIGATING AGENCY.....	30
PEDESTRIAN FATALITIES.....	31 - 32
ARKANSAS' 20 LARGEST CITIES BY POPULATION -	
CRASHES, FATALITIES AND INJURIES.....	33

COUNTY BREAKDOWNS

TOTAL CRASHES, FATALITIES AND INJURIES BY COUNTY.....	34 - 35
ALCOHOL/DRUG RELATED	
CRASHES, FATALITIES AND INJURIES BY COUNTY.....	36 - 37
FATALITIES VS. ALCOHOL/DRUG RELATED FATALITIES BY COUNTY.....	38

2002 ARKANSAS CRASH SUMMARY

- **On all public roads in Arkansas during 2002 there were:**

70,904 total crashes reported, a 3.1 % increase from 2001

557 fatal crashes reported, a 3.5 % increase from 2001

641 fatalities reported, a 4.9 % increase from 2001

243 alcohol/drug related fatalities, a 14.1 % increase from 2001

29.2 billion vehicle miles traveled, a 2.4 % increase from 2001

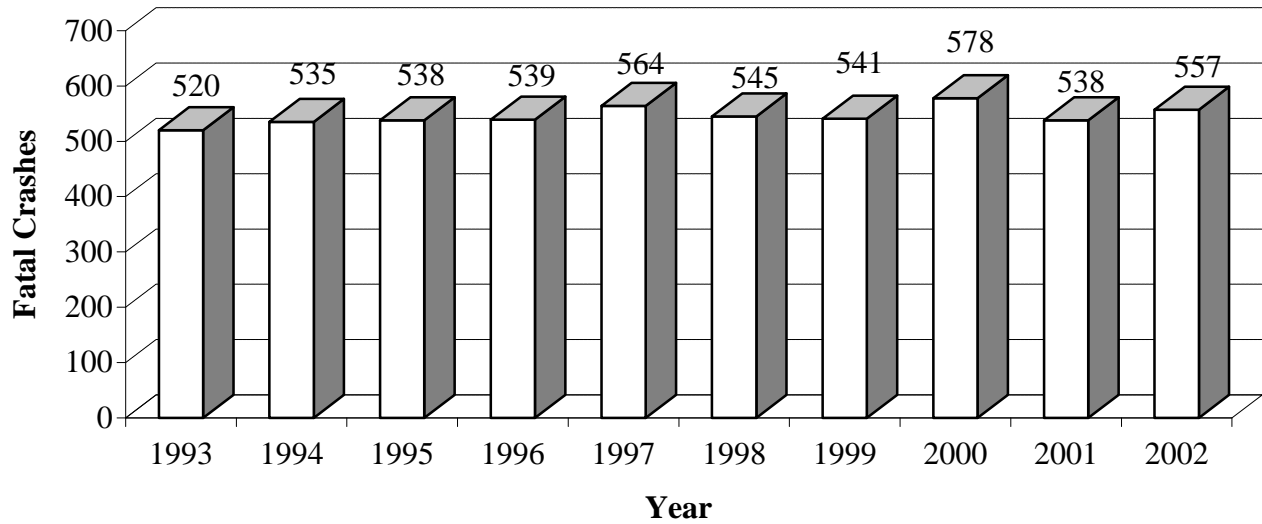
- **The fatality rate increased from 2.1 in 2001 to 2.2 fatalities per 100 MVM* traveled.**
- **The fatal crash rate remained steady at 1.9 fatal crashes per 100 MVM* traveled.**

* Million vehicle miles

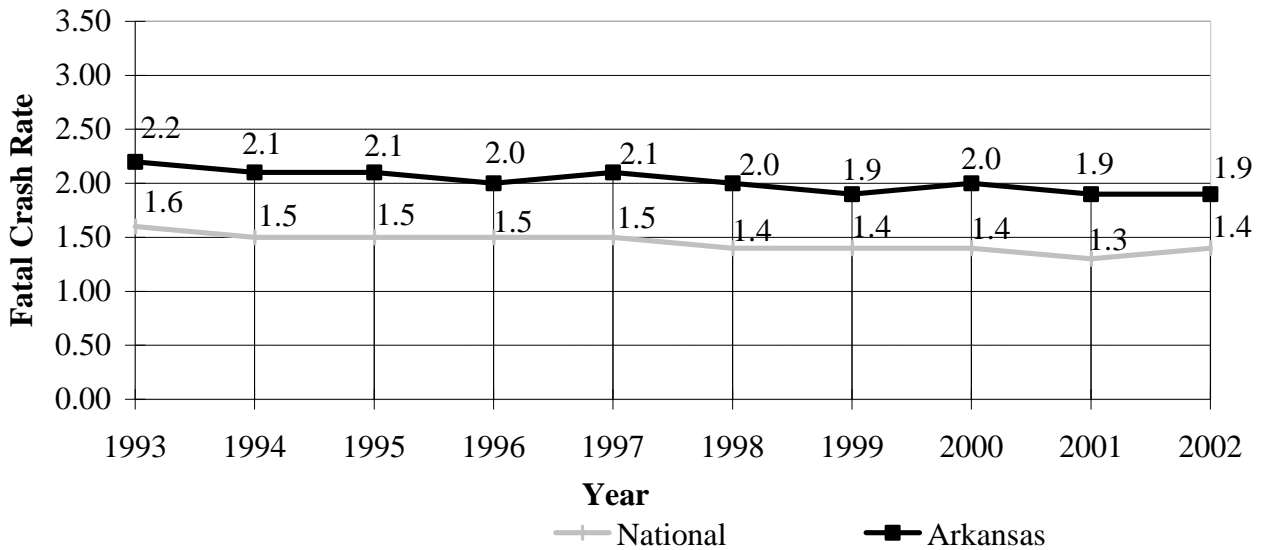
FATAL CRASHES AND RATES

10 YEAR TRENDS

STATEWIDE FATAL CRASHES



FATAL CRASH RATE (FATAL CRASHES PER 100 MVM*)

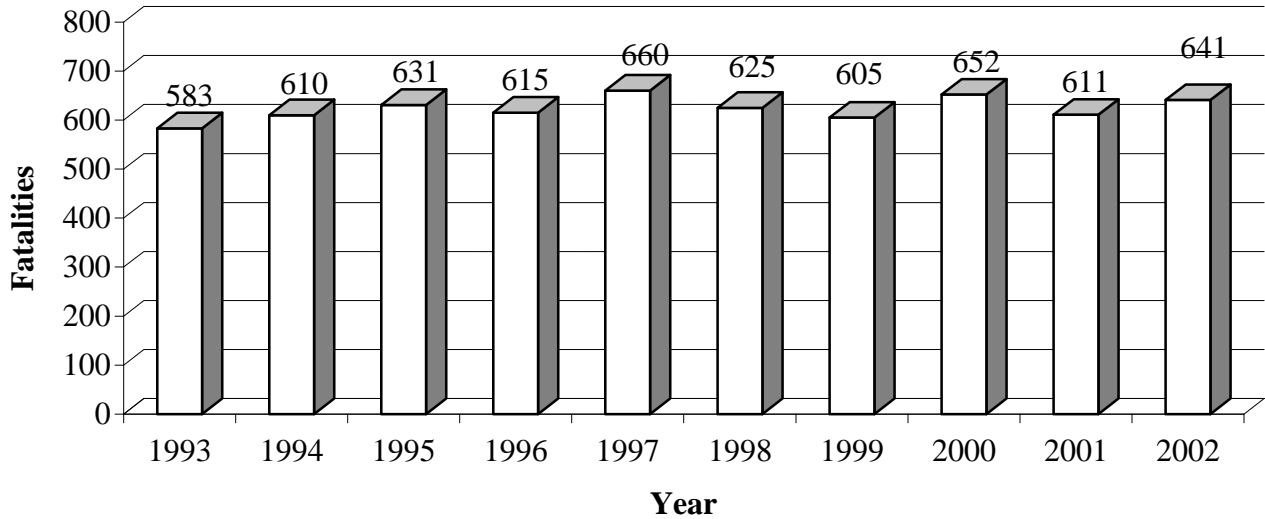


* Million vehicle miles

FATALITIES AND RATES

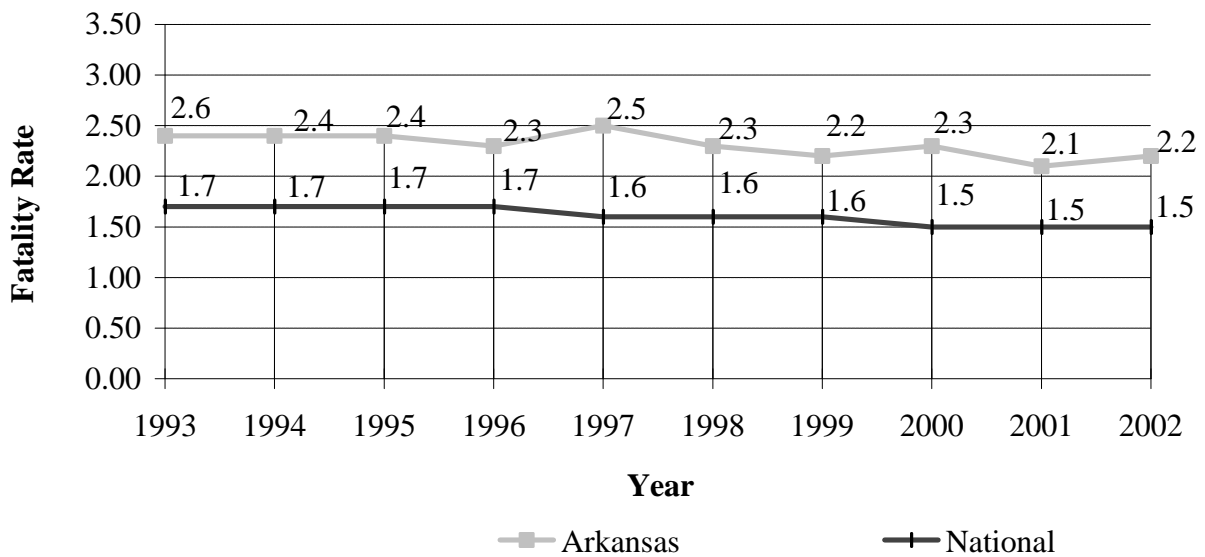
10 YEAR TRENDS

STATEWIDE FATALITIES



FATALITY RATE (FATALITIES PER 100 MVM*)

ARKANSAS FATALITY RATE (FATALITIES PER 100 MVM*)

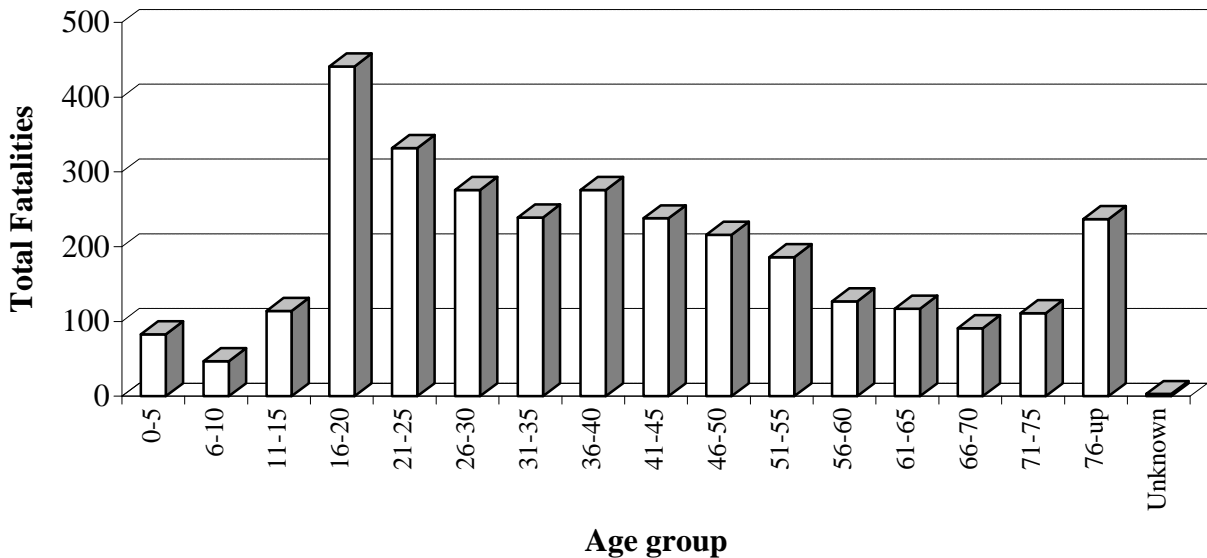


* Million vehicle miles

FATALITIES BY AGE GROUP, 1998-2002

5 YEAR TRENDS

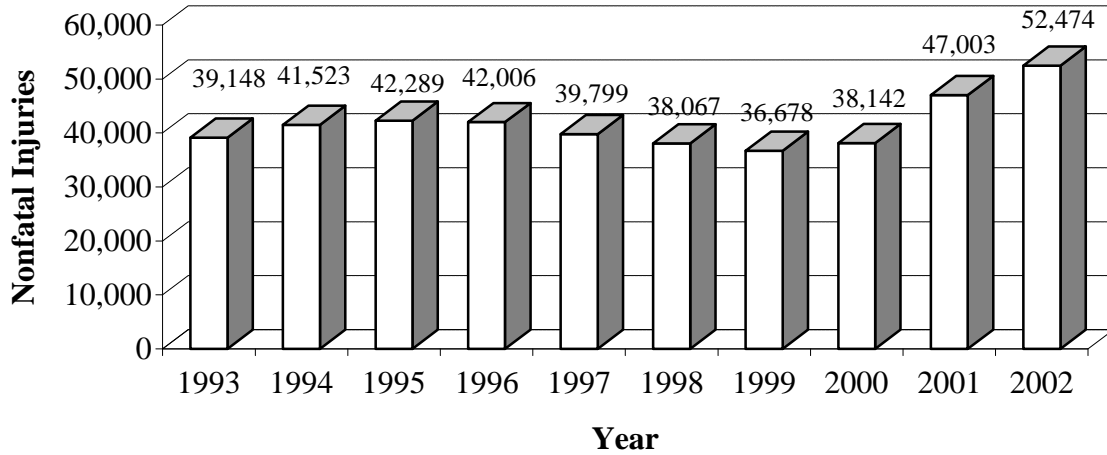
Age Group	1998	1999	2000	2001	2002	Total Fatalities
0-5	12	23	12	22	14	83
6-10	11	10	10	10	6	47
11-15	20	26	28	21	19	114
16-20	92	81	78	99	91	441
21-25	61	54	62	70	85	332
26-30	55	56	54	48	63	276
31-35	46	46	49	48	50	239
36-40	47	51	65	56	57	276
41-45	53	52	55	32	46	238
46-50	44	48	48	36	40	216
51-55	36	28	43	43	36	186
56-60	25	16	38	26	22	127
61-65	23	23	19	22	30	117
66-70	23	13	25	16	14	91
71-75	21	31	15	15	29	111
76-up	56	44	51	47	39	237
Unknown	0	3	0	0	0	3
Total	625	605	652	611	641	3,134



NONFATAL INJURIES AND RATES

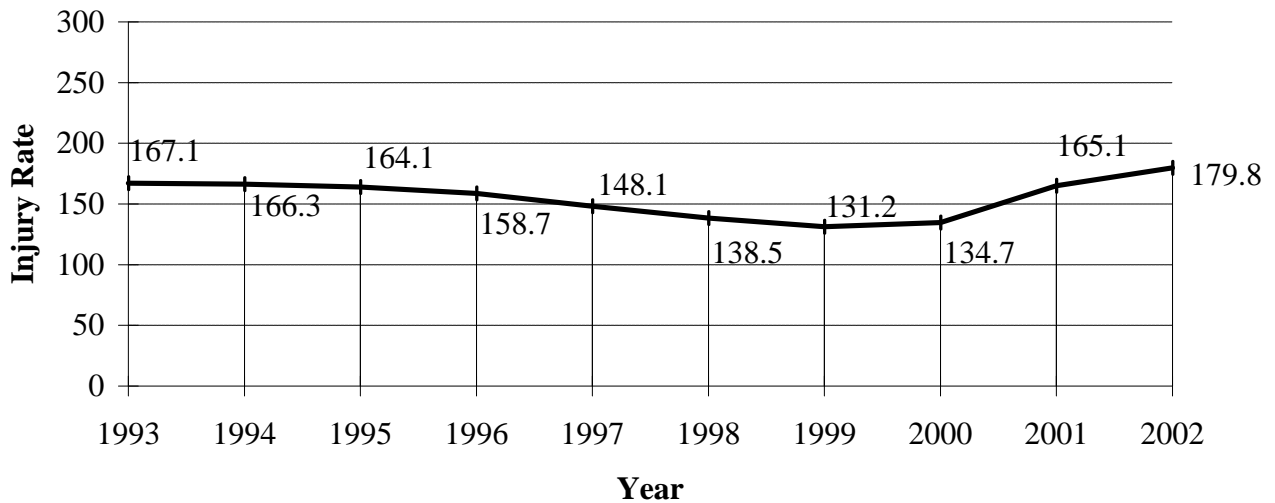
10 YEAR TRENDS

STATEWIDE NONFATAL INJURIES



Note: Increase in total number of nonfatal injuries in 2001 and 2002 is due to an increase in police reported possible injuries.

INJURY RATE (INJURIES PER 100 MVM*)



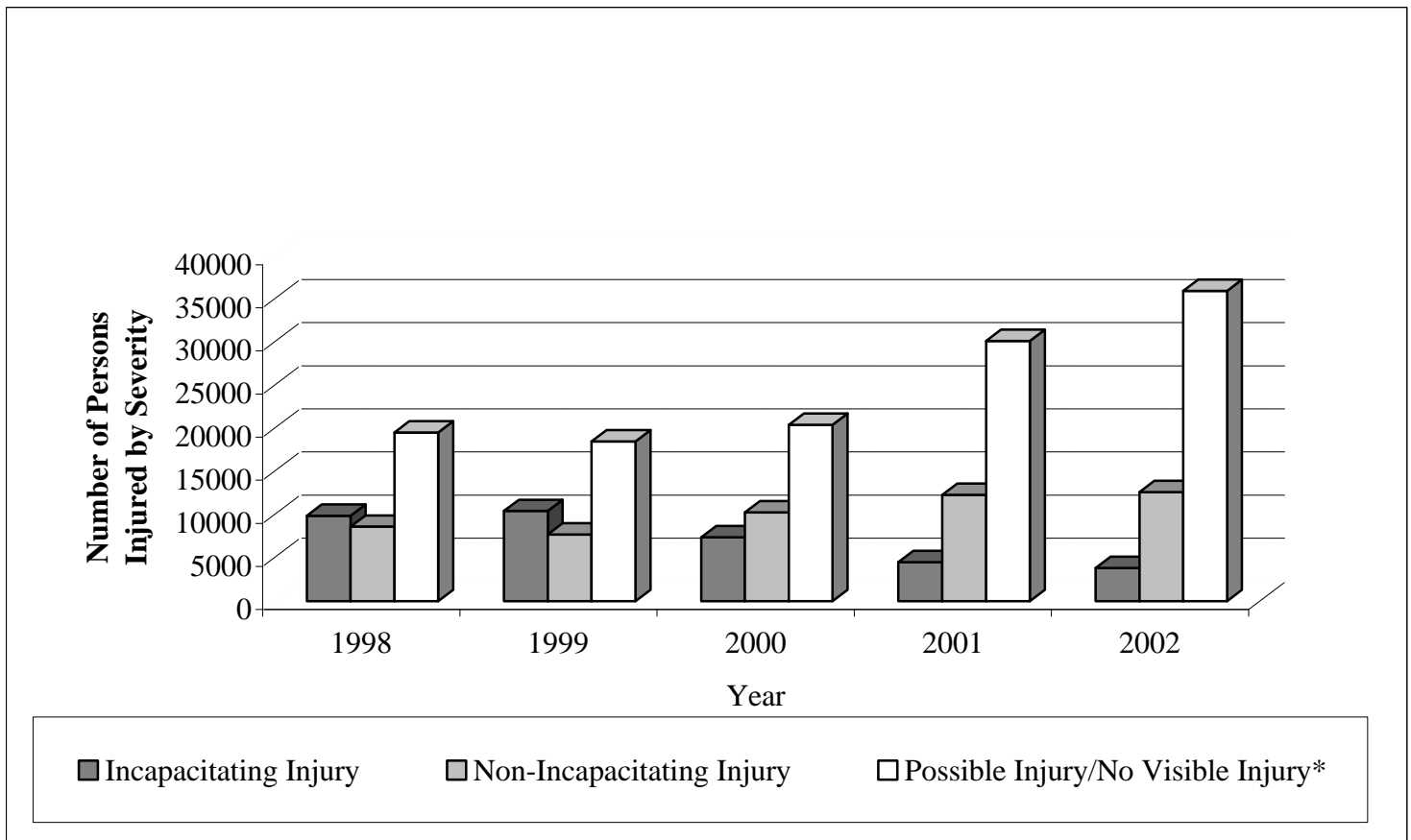
* Million vehicle miles

PERSONS INVOLVED IN CRASHES BY INJURY SEVERITY IN 2002

5 YEAR TREND

Injury Description	Number of Persons				
	1998	1999	2000	2001	2002
Fatal Injury	625	605	652	611	641
Incapacitating Injury	9,885	10,451	7,412	4,516	3,856
Non-Incapacitating Injury	8,634	7,711	10,297	12,320	12,648
Possible Injury/No Visible Injury*	19,547	18,516	20,433	30,166	35,966
No Injury/Property Damage Only	154,902	154,999	149,225	135,814	137,185

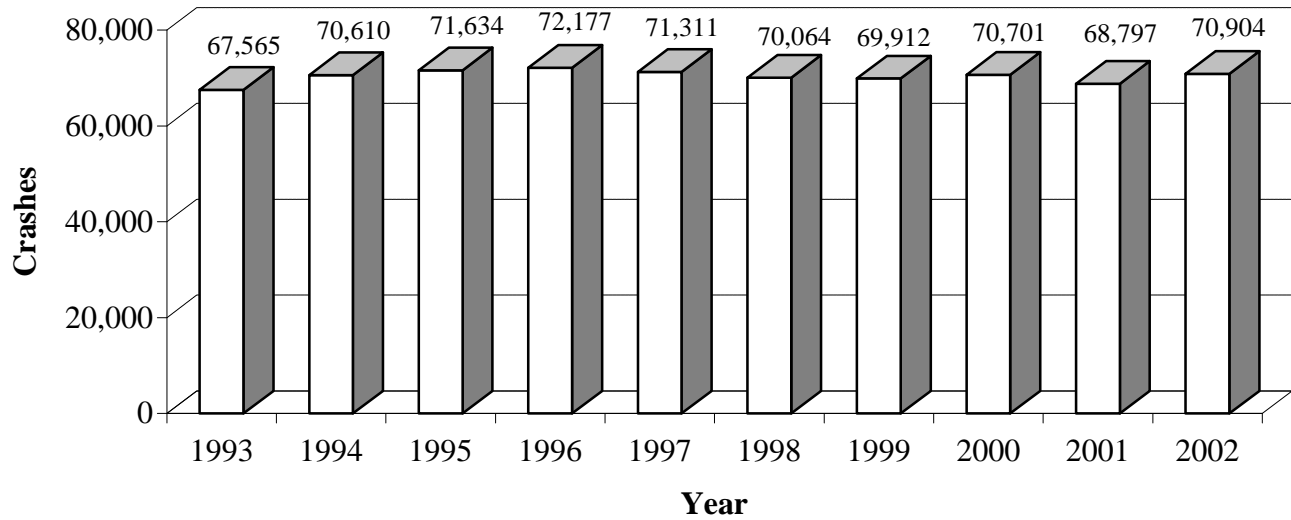
* Note: Terminology for Possible Injury was changed to No Visible Injury in May 2000.



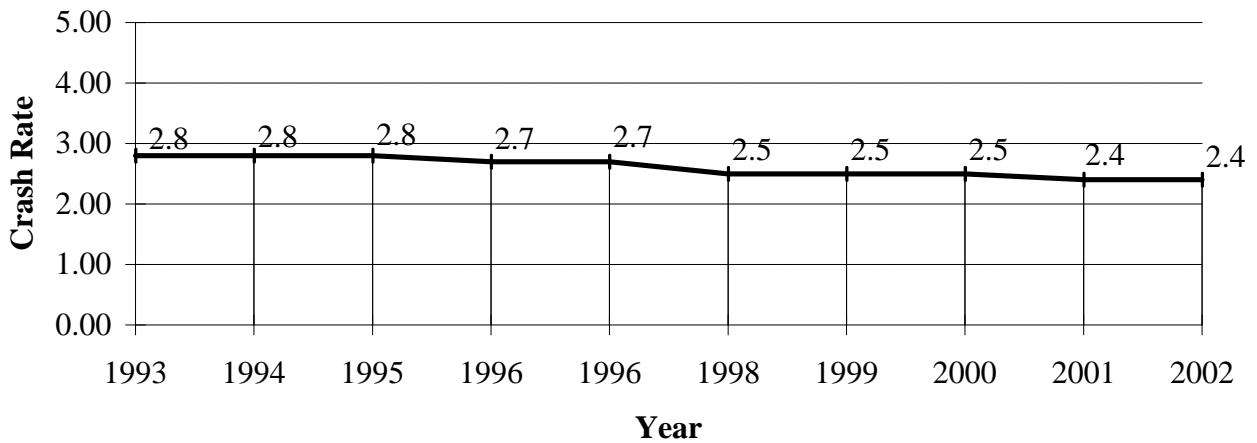
TOTAL CRASHES AND RATES

10 YEAR TRENDS

STATEWIDE CRASHES



CRASH RATE (CRASHES PER MVM*)

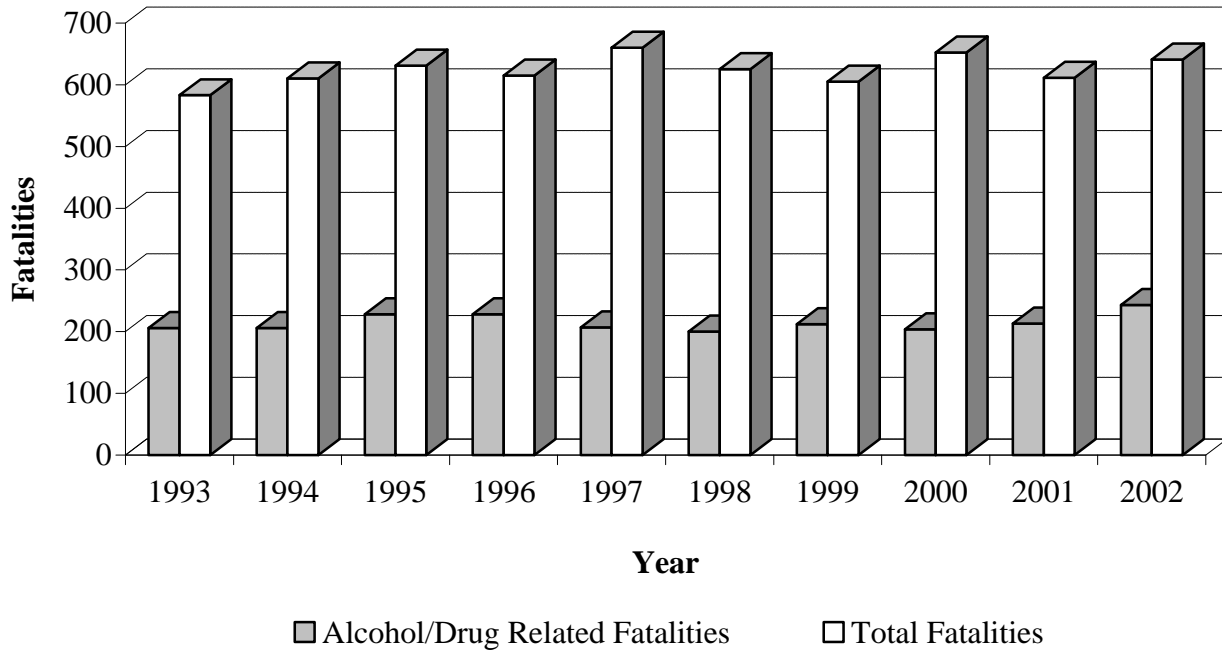


* Million vehicle miles

ALCOHOL/DRUG RELATED FATALITIES VS. TOTAL FATALITIES

10 YEAR TRENDS

Year	Alcohol/Drug Related Fatalities	Total Fatalities	Alcohol/Drug Fatalities as a % of Total
1993	206	583	35%
1994	206	610	34%
1995	228	631	36%
1996	228	615	37%
1997	207	660	31%
1998	200	625	32%
1999	212	605	35%
2000	204	652	31%
2001	213	611	35%
2002	243	641	38%

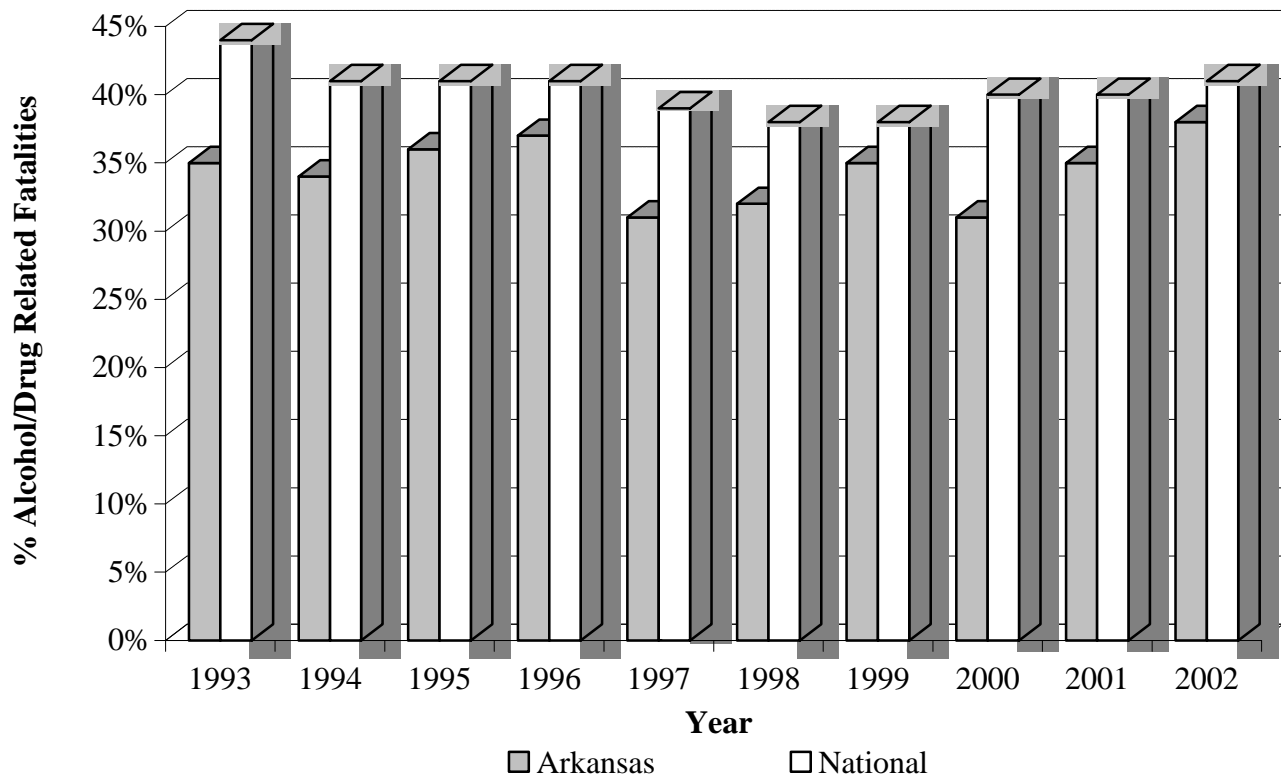


PERCENT ALCOHOL/DRUG RELATED FATALITIES ARKANSAS VS. NATIONAL*

10 YEAR TRENDS

Year	Arkansas	National
1993	35%	44%
1994	34%	41%
1995	36%	41%
1996	37%	41%
1997	31%	39%
1998	32%	38%
1999	35%	38%
2000	31%	40%
2001	35%	40%
2002	38%	41%

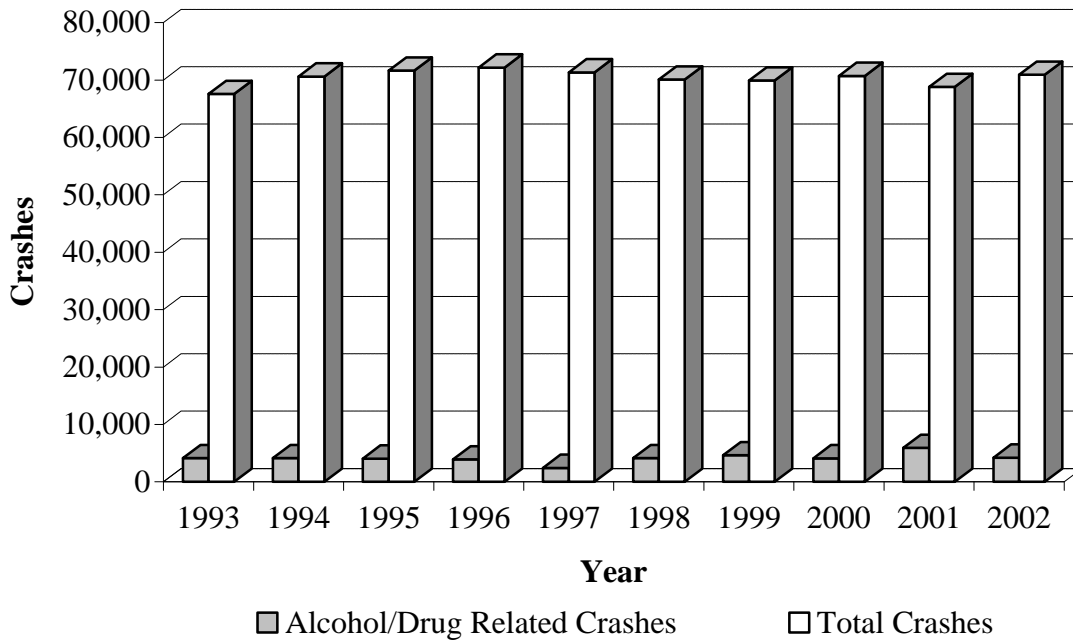
* Note: National figures represent alcohol related only.



ALCOHOL/DRUG RELATED CRASHES VS. TOTAL CRASHES

10 YEAR TRENDS

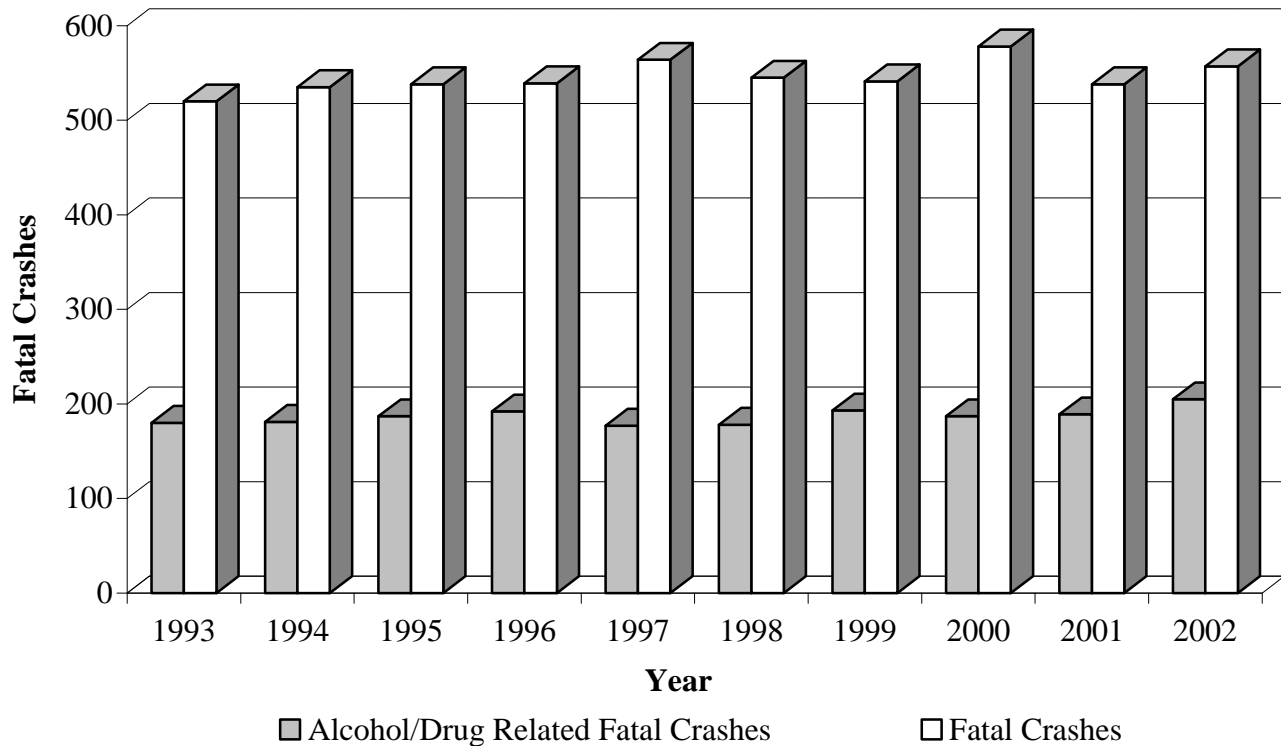
Year	Alcohol/Drug Related Crashes	Total Crashes	Alcohol/Drug as a % of Total Crashes
1993	4,144	67,565	6%
1994	4,134	70,610	6%
1995	4,054	71,634	6%
1996	3,921	72,177	5%
1997	2,452	71,311	3%
1998	4,125	70,064	6%
1999	4,645	69,912	7%
2000	4,097	70,701	6%
2001	5,912	68,797	9%
2002	4,203	70,904	6%



ALCOHOL/DRUG RELATED FATAL CRASHES VS. TOTAL FATAL CRASHES

10 YEAR TRENDS

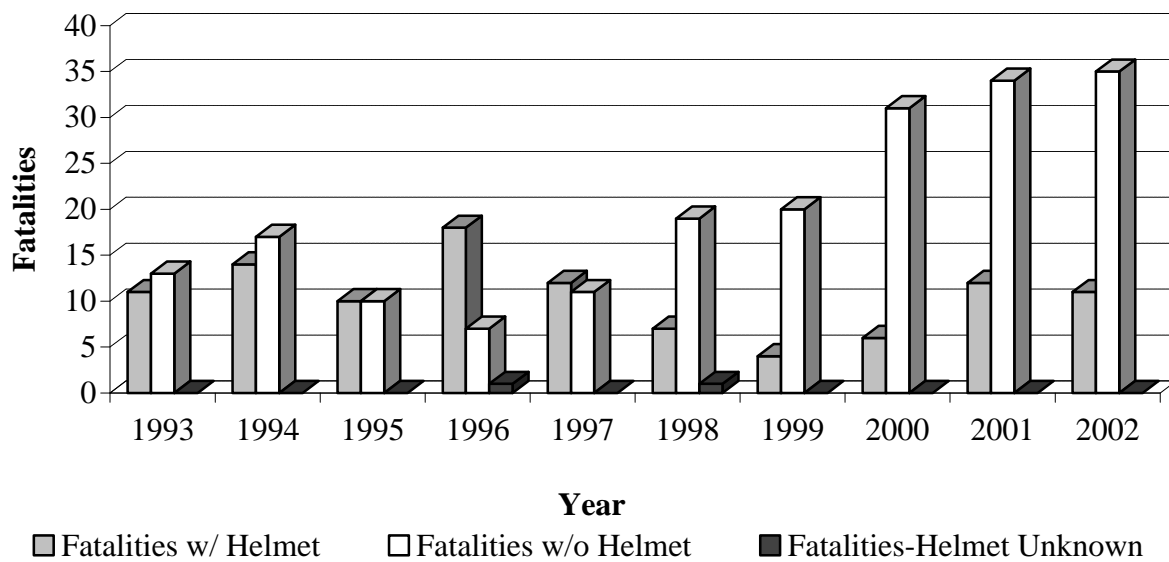
Year	Alcohol/Drug Related Fatal Crashes	Fatal Crashes	Alcohol/Drug Fatal Crashes as a % of Total
1993	180	520	35%
1994	181	535	34%
1995	187	538	35%
1996	192	539	36%
1997	177	564	31%
1998	178	545	33%
1999	193	541	36%
2000	187	578	32%
2001	189	538	35%
2002	205	557	37%



MOTORCYCLE CRASHES

10 YEAR TRENDS

Year	Total Crashes	Non Fatal Injuries	Fatal Crashes	Total Fatalities	Fatalities w/ Helmet	Fatalities w/o Helmet	Fatalities Helmet Use Unknown
1993	683	482	22	24	11	13	0
1994	495	495	29	31	14	17	0
1995	657	471	20	20	10	10	0
1996	576	369	23	26	18	7	1
1997	571	499	23	23	12	11	0
1998	625	541	26	27	7	19	1
1999	647	588	23	24	4	20	0
2000	871	744	37	37	6	31	0
2001	1,032	919	41	46	12	34	0
2002	1,041	979	46	46	11	35	0

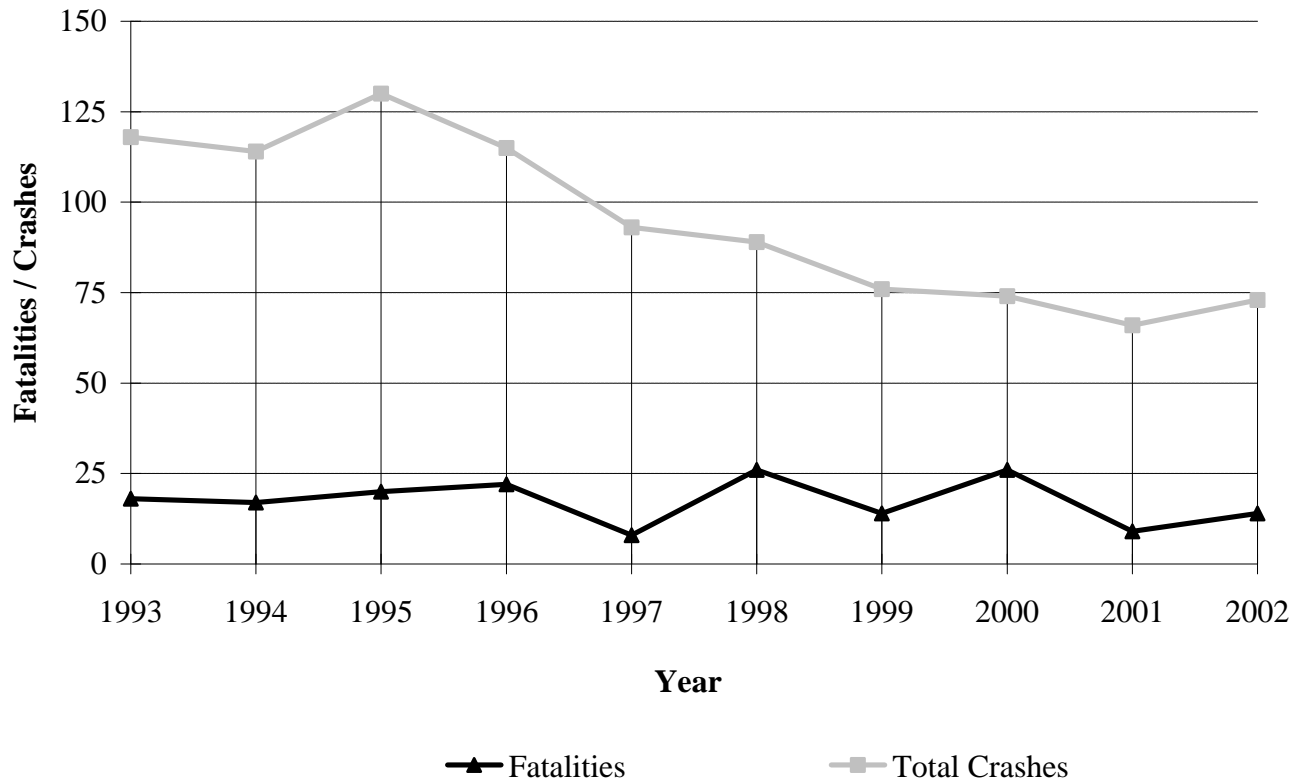


RAILROAD CRASHES, FATALITIES AND INJURIES

10 YEAR TRENDS

Year	Fatal Crashes	Nonfatal Injury Crashes	P.D.O. * Crashes	Total Crashes	Fatalities	Nonfatal Injuries
1993	15	51	52	118	18	69
1994	13	54	47	114	17	78
1995	16	51	63	130	20	80
1996	20	41	54	115	22	52
1997	7	37	49	93	8	48
1998	20	30	39	89	25	49
1999	12	25	39	76	14	40
2000	17	21	36	74	26	36
2001	9	25	32	66	9	36
2002	13	30	30	73	14	42

* Property Damage Only

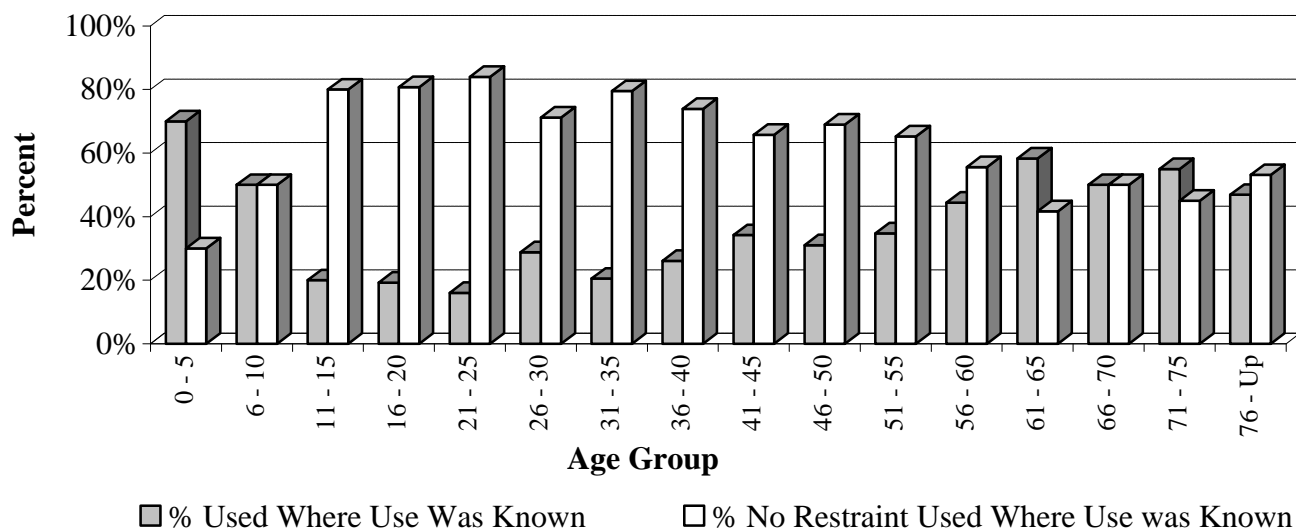


FATALITIES BY SAFETY RESTRAINT USAGE, PERCENT USED AND NOT USED IN 2002

(Non-Motorist and Motorcycle Fatalities not included)

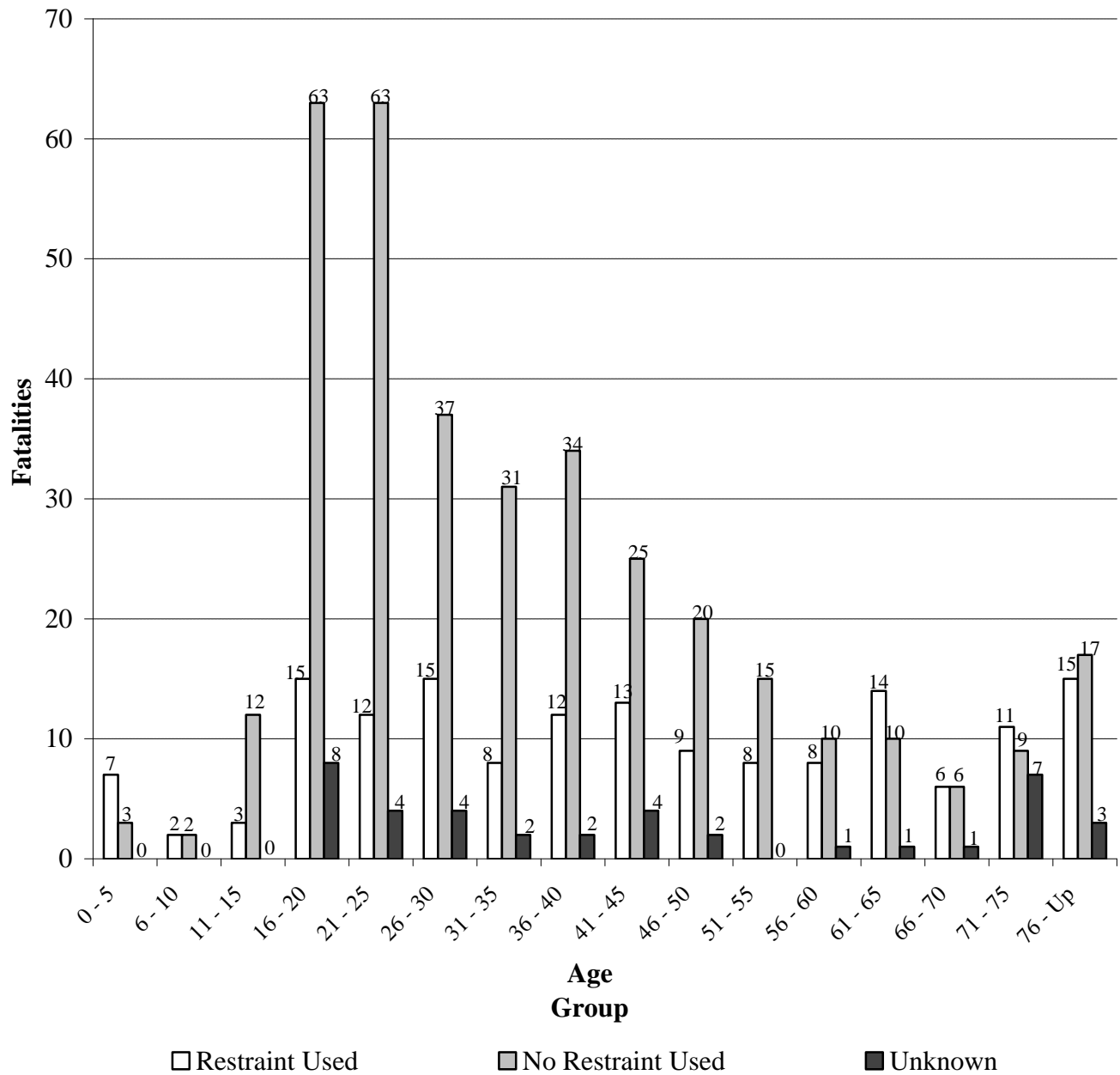
Age Group	Restraint Used	No Restraint Used	Unknown	% Restraint Used *	% No Restraint Used *
0 - 5	7	3	0	70%	30%
6 - 10	2	2	0	50%	50%
11 - 15	3	12	0	20%	80%
16 - 20	15	63	8	19%	81%
21 - 25	12	63	4	16%	84%
26 - 30	15	37	4	29%	71%
31 - 35	8	31	2	21%	79%
36 - 40	12	34	2	26%	74%
41 - 45	13	25	4	34%	66%
46 - 50	9	20	2	31%	69%
51 - 55	8	15	0	35%	65%
56 - 60	8	10	1	44%	56%
61 - 65	14	10	1	58%	42%
66 - 70	6	6	1	50%	50%
71 - 75	11	9	7	55%	45%
76 - Up	15	17	3	47%	53%
Total	158	357	39	31%	69%

* Percentage calculated using only fatalities where restraint use was known.



FATALITIES BY SAFETY RESTRAINT USAGE BY AGE GROUP IN 2002

(Motorcyclists and non-motorists are excluded.)



FATALITIES BY SAFETY RESTRAINT BY AGE IN 2002

(Motorcyclists and non-motorists are excluded.)

Age	None Used	Child Safety Seat	Lap And/Or Shoulder Belt	Unknown		Age	None Used	Child Safety Seat	Lap And/Or Shoulder Belt	Unknown
1	2	3	1			50	4		3	
2	1	1	0			51	5		1	
4		2	0			52			1	
9	1		0			53	4		3	
10	1		2			54	4		1	
12	2		1			55	2		2	
13			1			56	4		2	1
14	5		1			57	2		1	
15	5		0			58	1		2	
16	14		5			59	1		2	
17	13		2	2		60	2		1	
18	13		3	2		61	4		1	
19	11		2	3		62	1		4	1
20	12		3	1		63	3		2	
21	20		5	1		64	2		2	
22	15		2	1		65			5	
23	11		3	2		67			1	1
24	9		2			68			2	
25	8		0			69	3		1	
26	7		2			70	3		2	
27	7		4			71	3		0	1
28	8		2	3		72	2		6	2
29	9		3	1		73	2		3	1
30	6		4			74	2		1	2
31	9		0			75			1	1
32	5		3			76	1		3	
33	3		1			77	1		1	
34	10		4	1		78			3	1
35	4		0	1		79			2	
36	6		0			80			2	
37	6		1			81			1	
38	2		7			82			1	
39	7		1			83	1		1	1
40	13		3	2		84	1		1	1
41	9		3			85	1		0	
42	4		1	2		86	3		0	
43	4		2	1		87	2		0	
44	5		3			88	1		0	
45	3		4	1		90	2		0	
46	6		2			91	2		0	
47	6		1	1		92	1		0	
48	4		2	1		100	1		0	
49			1			Total	357	6	152	39

FATALITIES BY AGE AND PERSON TYPE IN 2002

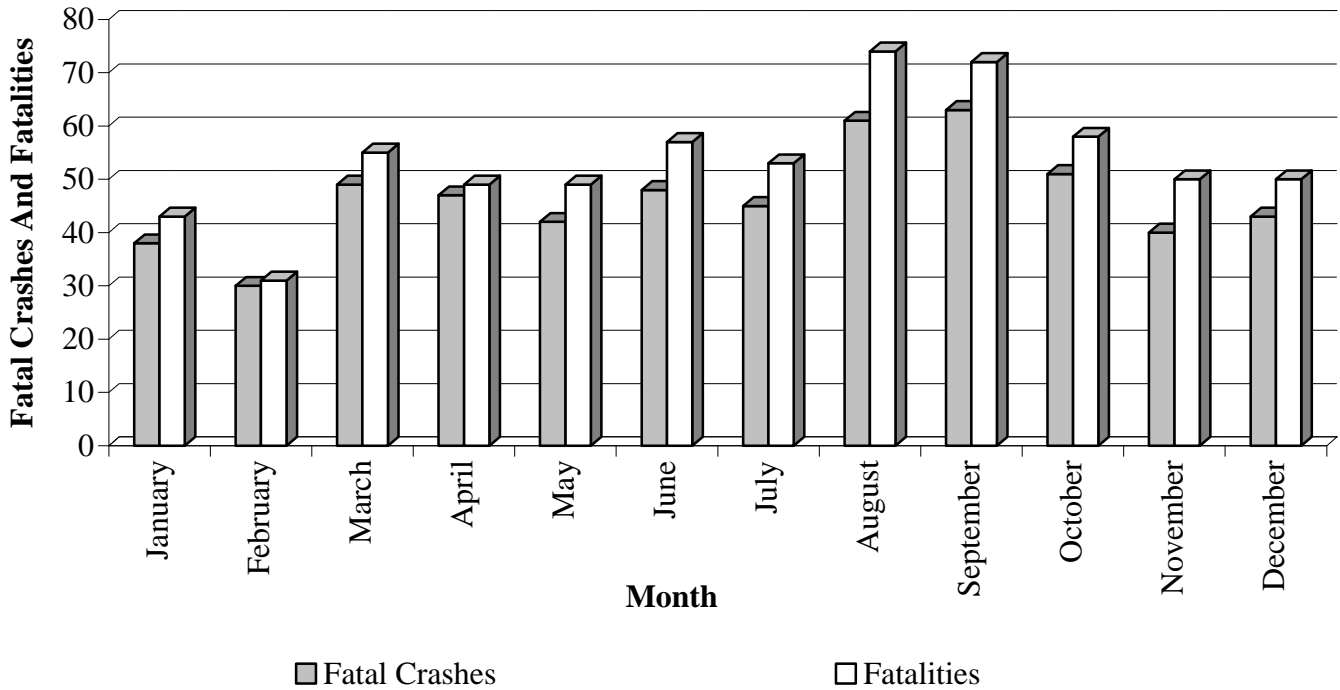
Age	Driver	Occupant	Non-Motorist		Age	Driver	Occupant	Non-Motorist
1		5			49	2		2
2		2	1		50	7		
3			1		51	8		1
4		2	1		52	3	2	2
5			1		53	4	3	1
8		1			54	5	1	1
9		1			55	4		1
10		4			56	7		1
12	1	3			57	4		
13		1			58	3		
14	3	3	1		59	3		
15	5	2			60	1	2	1
16	18	3			61	5		
17	10	7			62	6		
18	15	3			63	3	2	2
19	14	3			64	4	1	1
20	10	7	1		65	4	1	1
21	16	10			66			1
22	13	5			67	1	1	
23	12	6	1		68	2		
24	8	4	1		69	2	2	
25	7	2			70	5		
26	6	3	1		71	3	1	2
27	8	6			72	7	3	
28	10	4			73	5	1	
29	4	9	2		74	4	1	
30	9	1	1		75		2	
31	9	1			76		4	
32	8	3	1		77		2	
33	6		1		78	3	1	
34	11	5			79	1	1	
35	5				80	1	1	
36	6	3			81	1	1	1
37	4	3	1		82	1		
38	10				83	3		1
39	10		1		84		3	
40	19				85	1		
41	7	5	1		86	2	1	
42	5	2			87	1	1	
43	6	2			88	1		
44	6	2			90	2		
45	7	3			91	2		1
46	6	2	2		92	1		
47	9	1	1		100	1		
48	7		1		Total	433	167	41

ALCOHOL/DRUG RELATED FATALITIES BY AGE AND PERSON TYPE IN 2002

Age	Driver	Occupant	Non-Motorist		Age	Driver	Occupant	Non-Motorist
1		2			41	2	3	1
2		1			42	2	1	
10		2			43	2	1	
12		1			44		1	
16	1	1			45		2	
17	4	4			46	2	1	1
18	3	1			47	4		1
19	5	1			48	3		
20	8	4	1		49	1		1
21	11	7			50	2		
22	7	3			51	3		
23	8	2	1		52	1	1	2
24	3	3	1		53	1		
25	4	2			54	3		
26	3	1	1		55	1		1
27	6	2			56	3		1
28	5	2			57	2		
29	3	3	1		58	2		
30	2	1	1		59	1		
31	5	1			61	3		
32	4	2	1		62	2		
33	2		1		63	1		1
34	3	3			64		1	
35	2				68	1		
36	3	3			69		1	
37	4	1	1		73		1	
38	4				76		1	
39	7				77		1	
40	7				80	1		
					Total	157	68	18

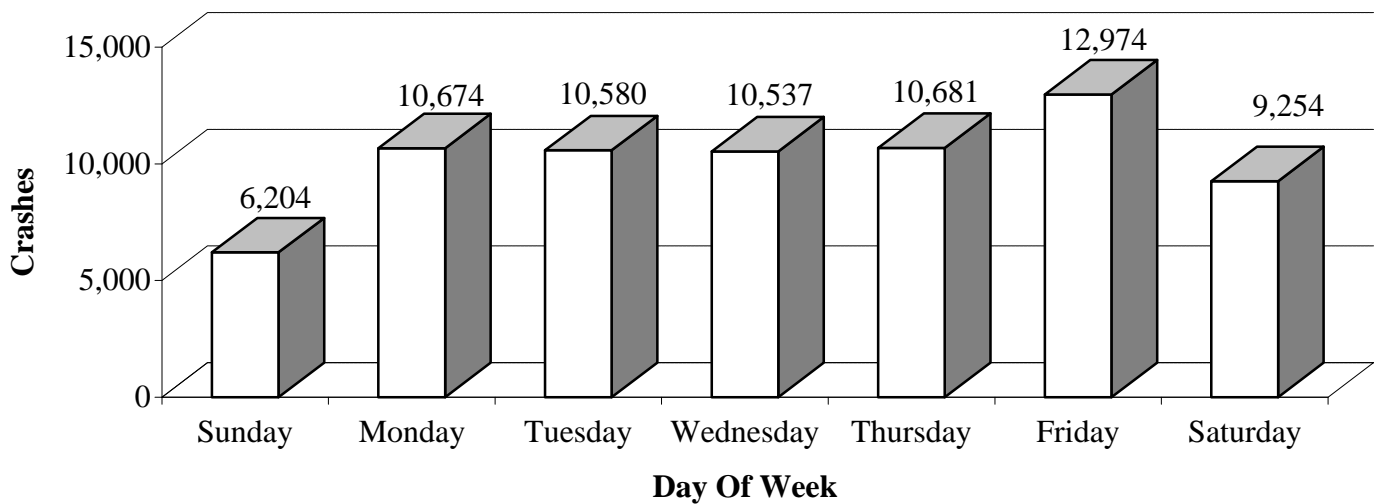
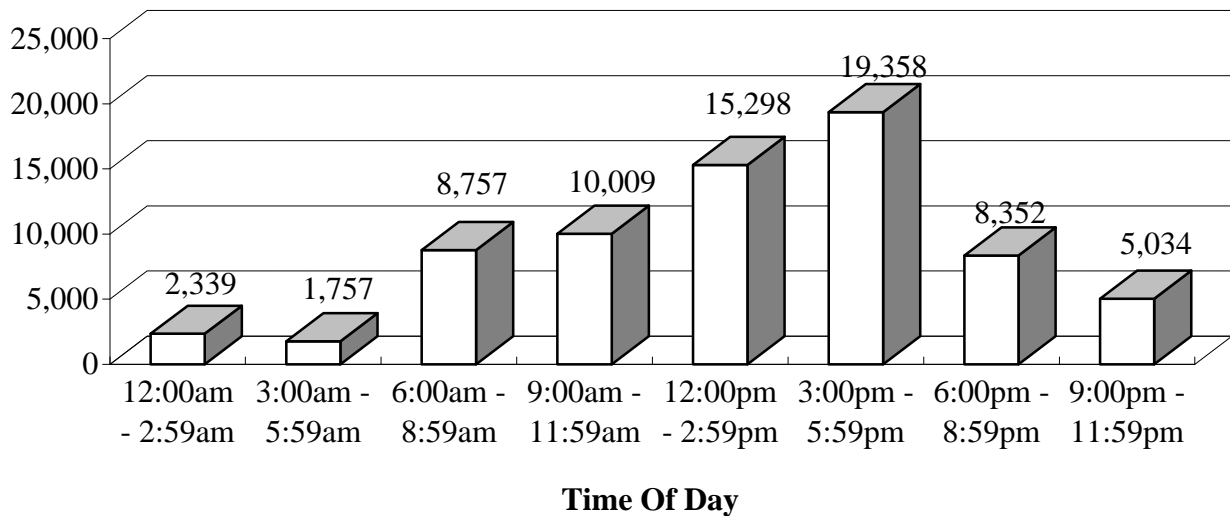
FATAL CRASHES AND FATALITIES BY MONTH IN 2002

Month	Fatal Crashes	Fatalities
January	38	43
February	30	31
March	49	55
April	47	49
May	42	49
June	48	57
July	45	53
August	61	74
September	63	72
October	51	58
November	40	50
December	43	50
Total	557	641



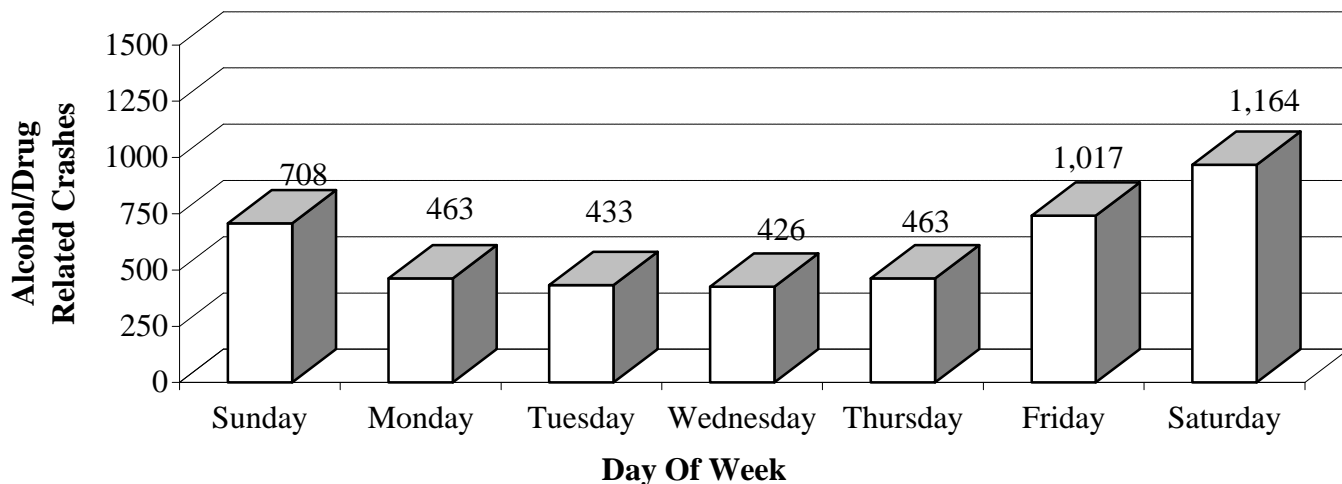
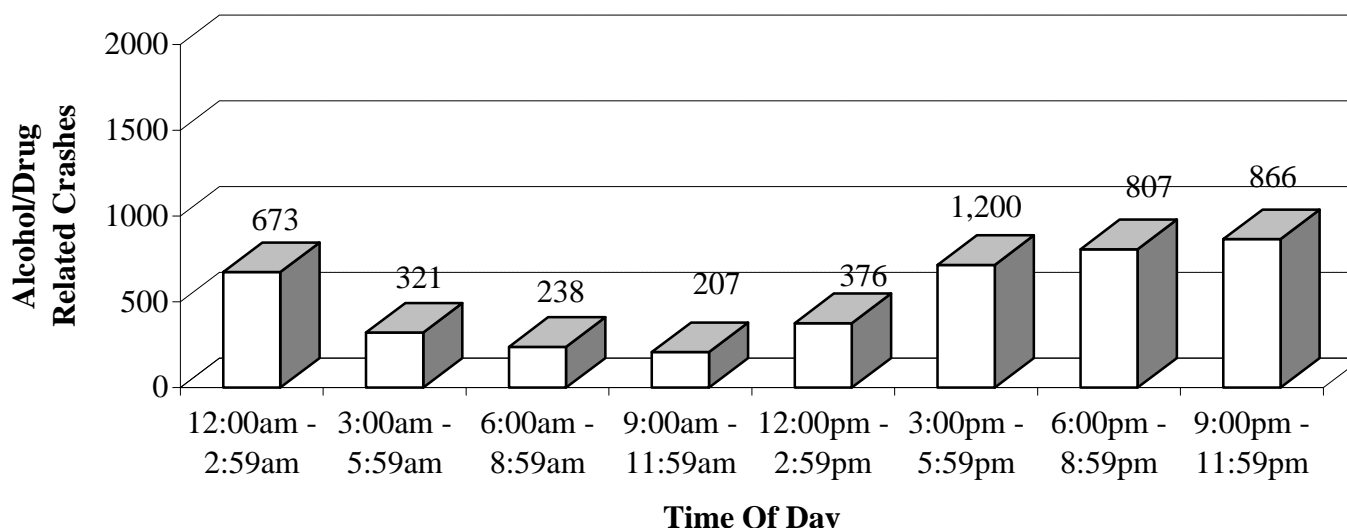
CRASHES BY TIME OF DAY AND DAY OF WEEK IN 2002

Time of Day	Sunday	Monday	Tuesday	Wednesday	Thursday	Friday	Saturday	Total
12:00am - 2:59am	557	181	244	242	237	273	605	2,339
3:00am - 5:59am	389	172	178	222	209	237	350	1,757
6:00am - 8:59am	380	1,486	1,529	1,601	1,523	1,571	667	8,757
9:00am - 11:59am	813	1,529	1,453	1,449	1,466	1,792	1,507	10,009
12:00pm - 2:59pm	1,291	2,417	2,249	2,253	2,259	2,870	1,959	15,298
3:00pm - 5:59pm	1,289	3,187	3,180	3,014	3,216	3,681	1,791	19,358
6:00pm - 8:59pm	968	1,112	1,160	1,189	1,143	1,526	1,254	8,352
9:00pm - 11:59pm	517	590	587	567	628	1,024	1,121	5,034
Total	6,204	10,674	10,580	10,537	10,681	12,974	9,254	70,904



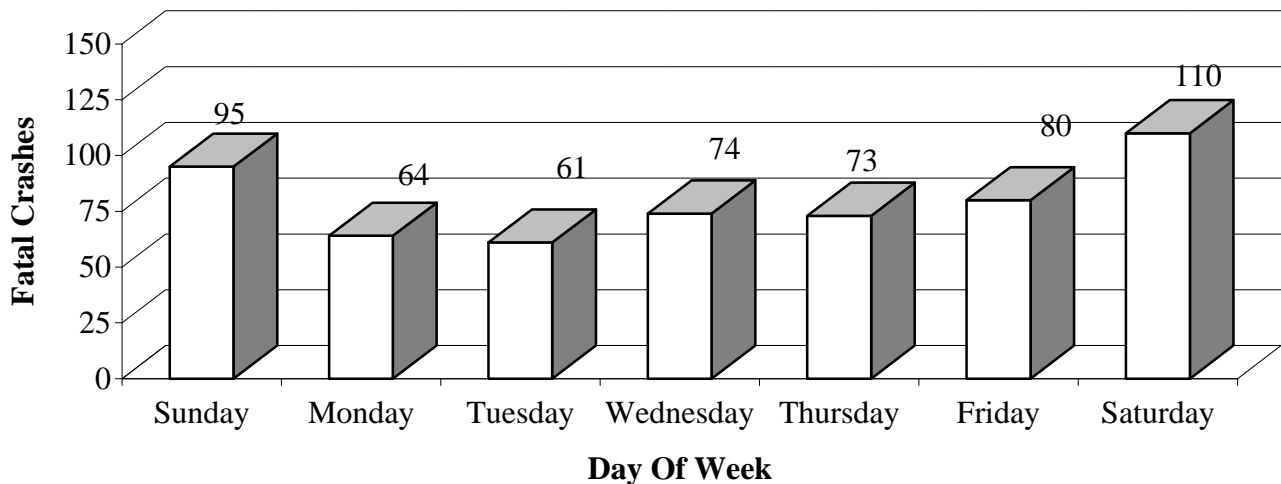
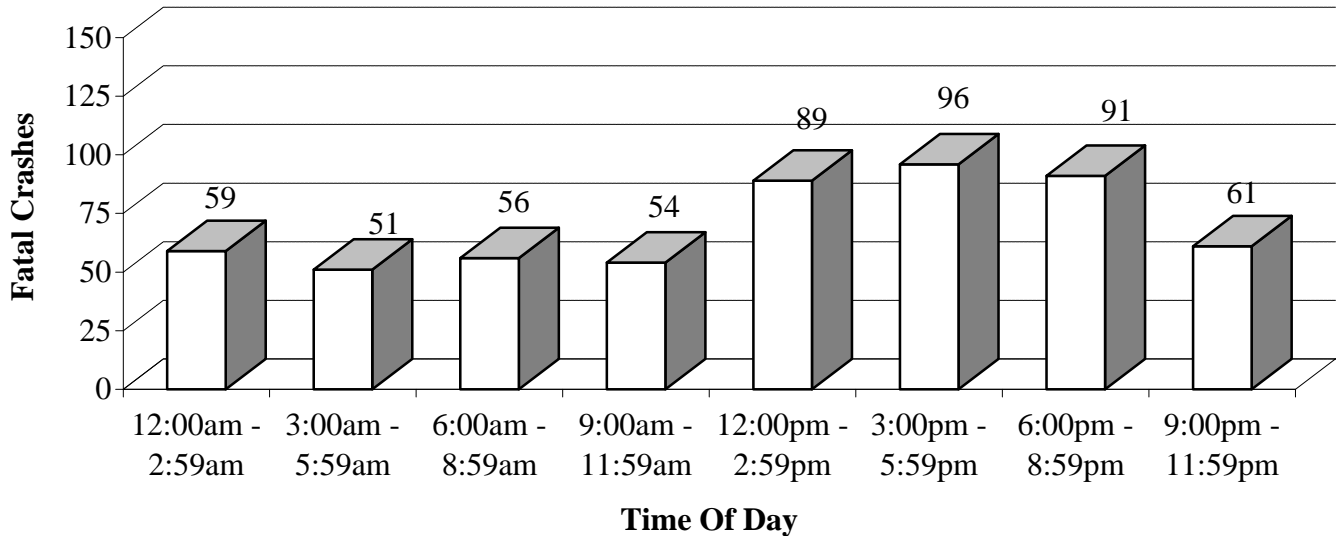
ALCOHOL/DRUG RELATED CRASHES BY TIME OF DAY AND DAY OF WEEK IN 2002

Time of Day	Sunday	Monday	Tuesday	Wednesday	Thursday	Friday	Saturday	Total
12:00am - 2:59am	204	36	35	45	71	82	200	673
3:00am - 5:59am	119	26	16	15	22	35	88	321
6:00am - 8:59am	38	26	24	27	27	40	56	238
9:00am - 11:59am	33	29	25	22	22	34	42	207
12:00pm - 2:59pm	41	48	48	52	45	64	78	376
3:00pm - 5:59pm	80	107	104	84	84	129	127	715
6:00pm - 8:59pm	108	108	97	90	97	147	160	807
9:00pm - 11:59pm	85	83	84	91	95	211	217	866
Total	708	463	433	426	463	742	968	4,203



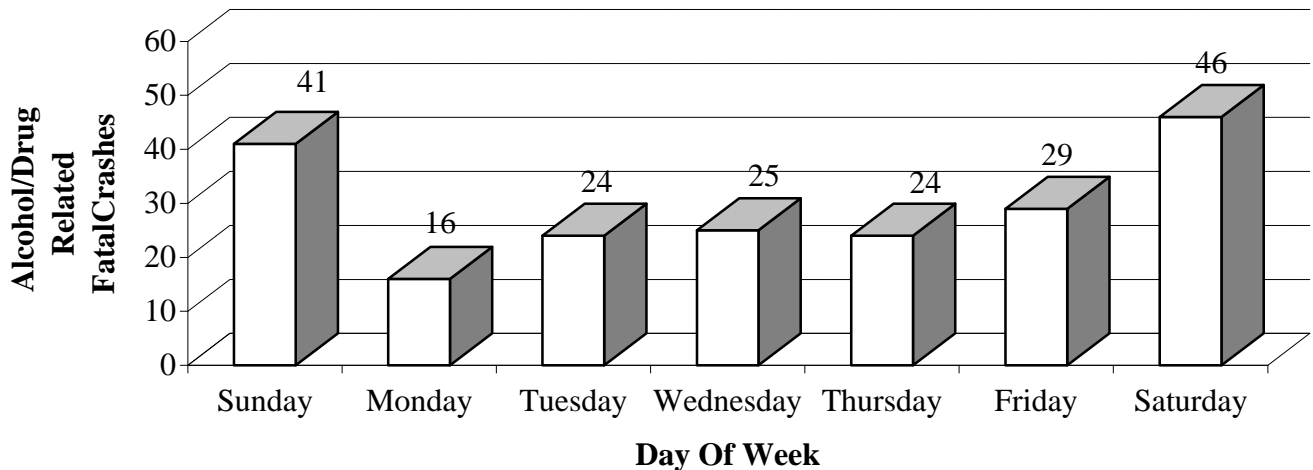
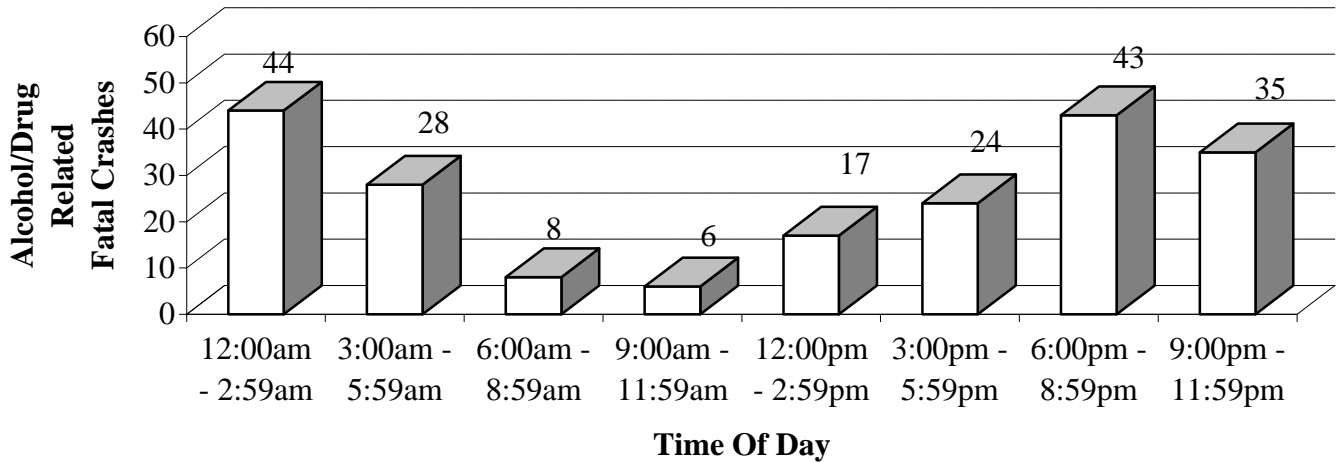
FATAL CRASHES BY TIME OF DAY AND DAY OF WEEK IN 2002

Time of Day	Sunday	Monday	Tuesday	Wednesday	Thursday	Friday	Saturday	Total
12:00am - 2:59am	16	1	5	6	7	7	17	59
3:00am - 5:59am	15	3	6	5	6	3	13	51
6:00am - 8:59am	4	8	8	9	7	9	11	56
9:00am - 11:59am	14	8	6	5	4	8	9	54
12:00pm - 2:59pm	8	14	14	14	12	12	15	89
3:00pm - 5:59pm	16	12	9	19	12	14	14	96
6:00pm - 8:59pm	16	12	9	10	16	13	15	91
9:00pm - 11:59pm	6	6	4	6	9	14	16	61
Total	95	66	61	84	73	80	110	557



ALCOHOL/DRUG RELATED FATAL CRASHES BY TIME OF DAY AND DAY OF WEEK IN 2002

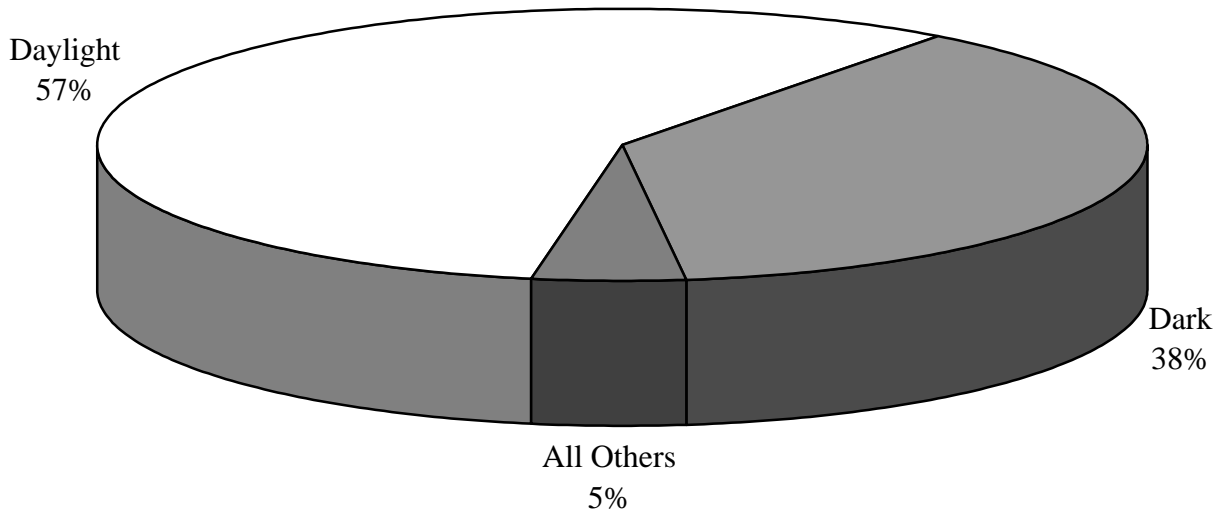
Time of Day	Sunday	Monday	Tuesday	Wednesday	Thursday	Friday	Saturday	Total
12:00am - 2:59am	11	0	4	4	5	6	14	44
3:00am - 5:59am	12	3	2	3	2	1	5	28
6:00am - 8:59am	0	1	3	2	0	0	2	8
9:00am - 11:59am	2	0	0	1	0	3	0	6
12:00pm - 2:59pm	1	1	2	5	2	1	5	17
3:00pm - 5:59pm	5	4	3	5	2	1	4	24
6:00pm - 8:59pm	7	6	6	2	9	7	6	43
9:00pm - 11:59pm	3	1	4	3	4	10	10	35
Total	41	16	24	25	24	29	46	205



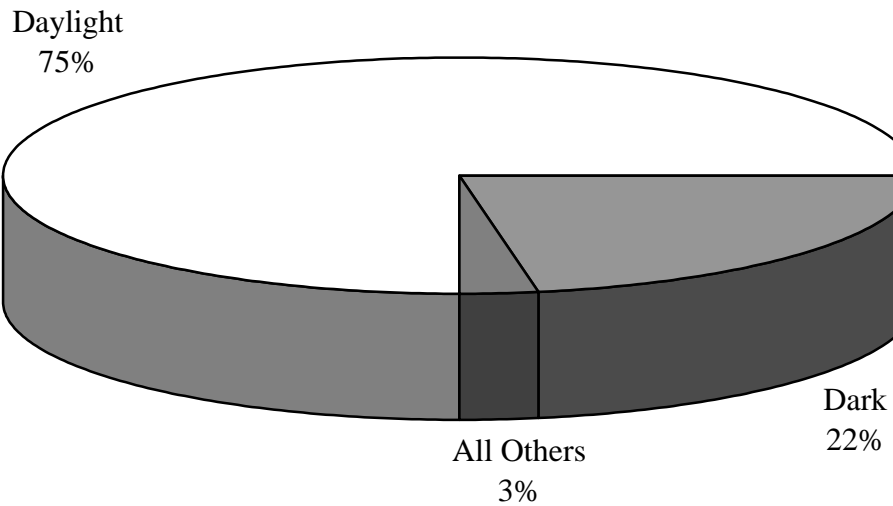
CRASHES BY LIGHTING CONDITIONS IN 2002

Light Condition	Fatal Crashes	Total Crashes
Daylight	320	53,239
Dark	210	15,617
Other	25	1,844
Unknown	2	204
Total	557	70,904

Fatal Crashes



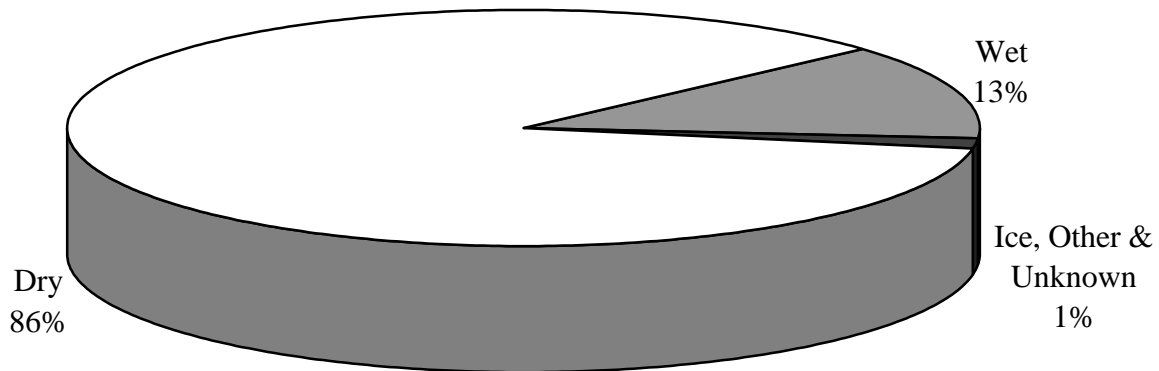
Total Crashes



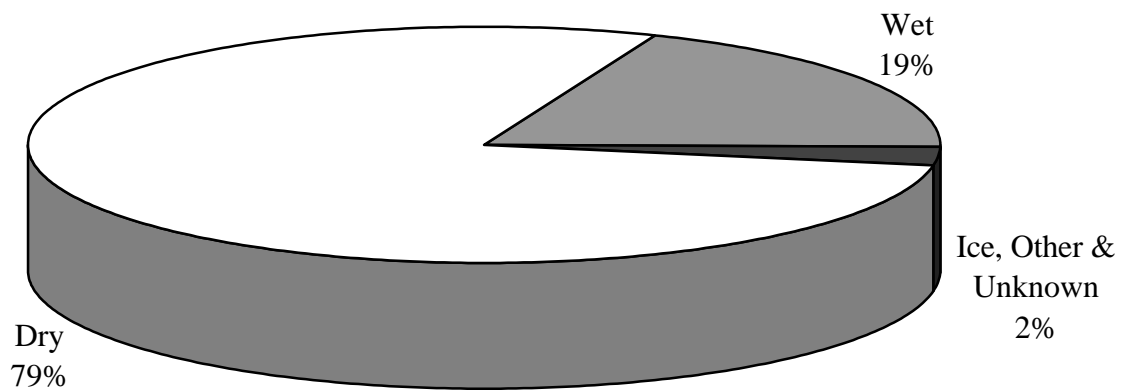
CRASHES BY ROAD SURFACE CONDITIONS IN 2002

Condition	Fatal Crashes	Total Crashes
Dry	477	55,493
Wet	72	13,684
Ice	3	1,201
Other	4	376
Unknown	1	150
Total	557	70,904

Fatal Crashes



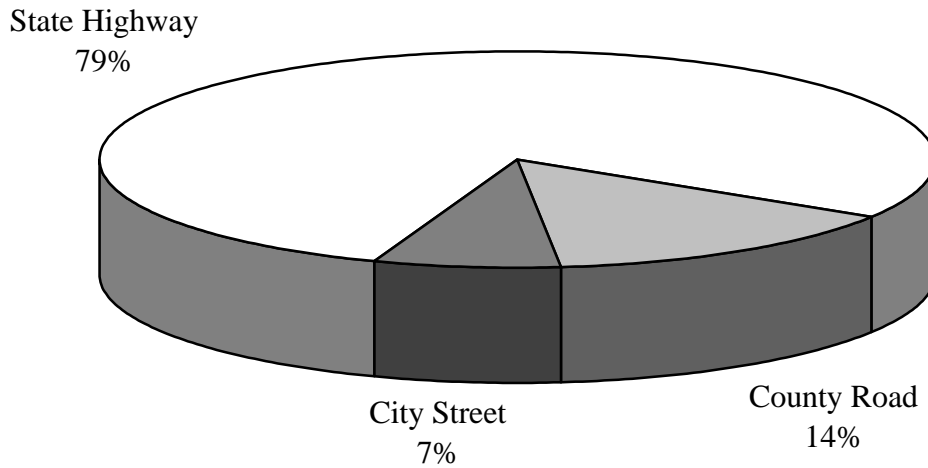
Total Crashes



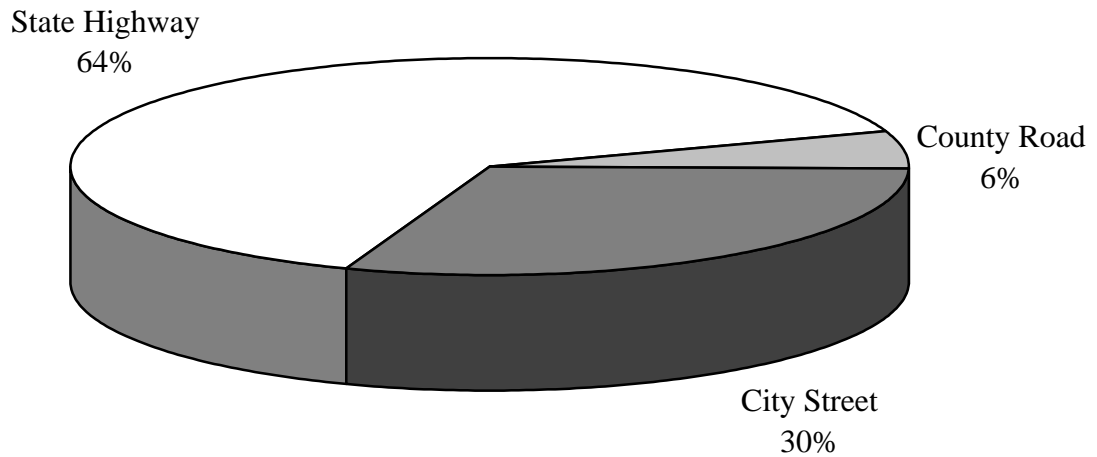
CRASHES BY ROAD SYSTEM IN 2002

Road System	Fatal Crashes	Nonfatal Injury	P.D.O. * Crashes	Total Crashes
State Highway	436	18,516	26,501	45,453
County Road	80	2,159	1,725	3,964
City Street	41	7,450	13,996	21,487
Totals	557	28,125	42,222	70,904

Fatal Crashes



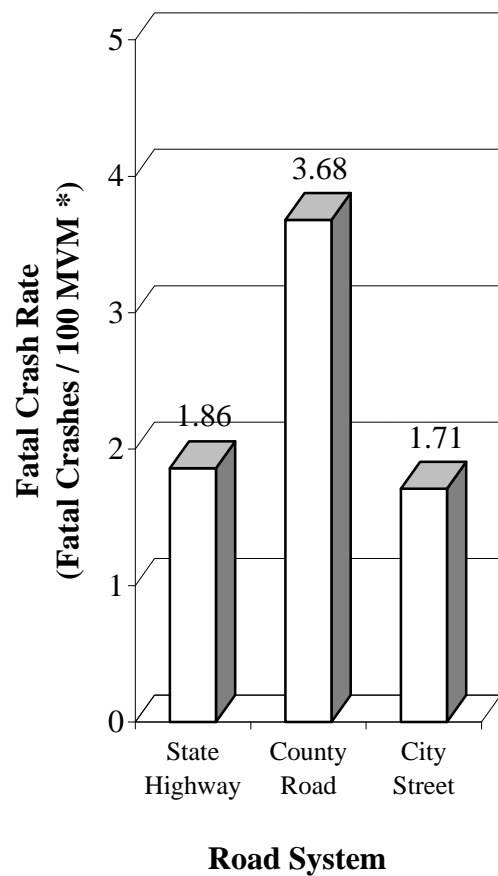
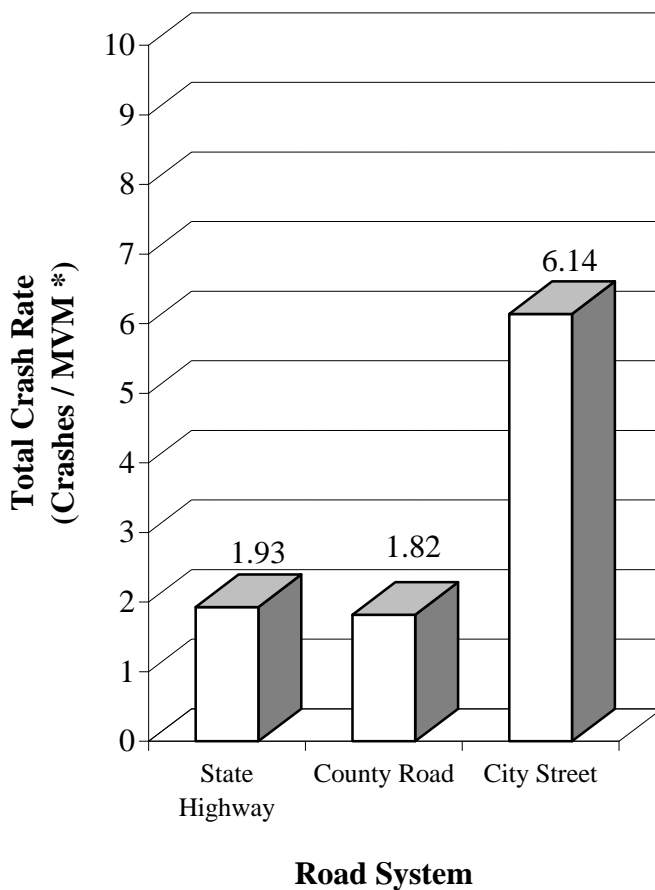
Total Crashes



* Property Damage Only

CRASH RATES BY ROAD SYSTEM IN 2002

Road System	Annual MVM*	Total Crashes	Crashes per MVM*	Fatal Crashes	Fatal Crashes per 100 MVM*
State Highway	23,503	45,453	1.93	436	1.86
County Road	2,175	3,964	1.82	80	3.68
City Street	3,501	21,487	6.14	41	1.71
Totals	29,179	70,904	2.43	557	1.91

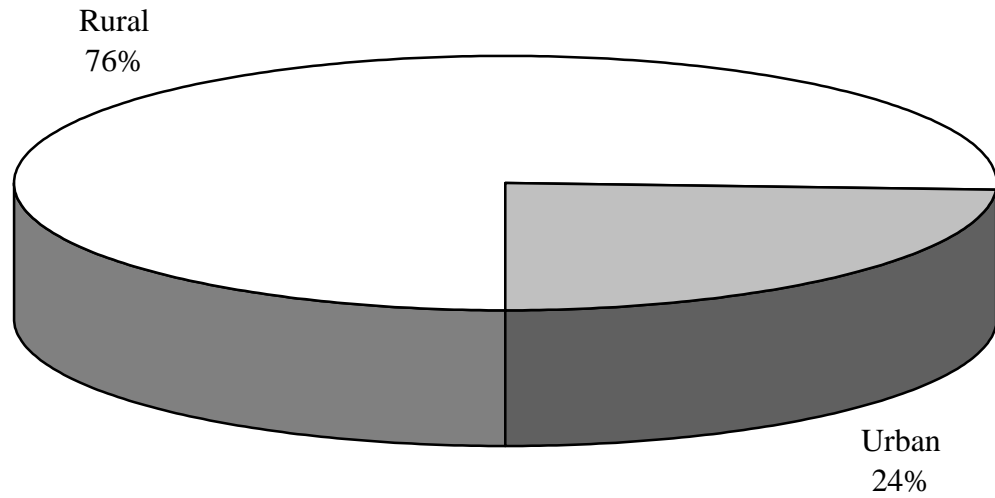


* Million vehicle miles

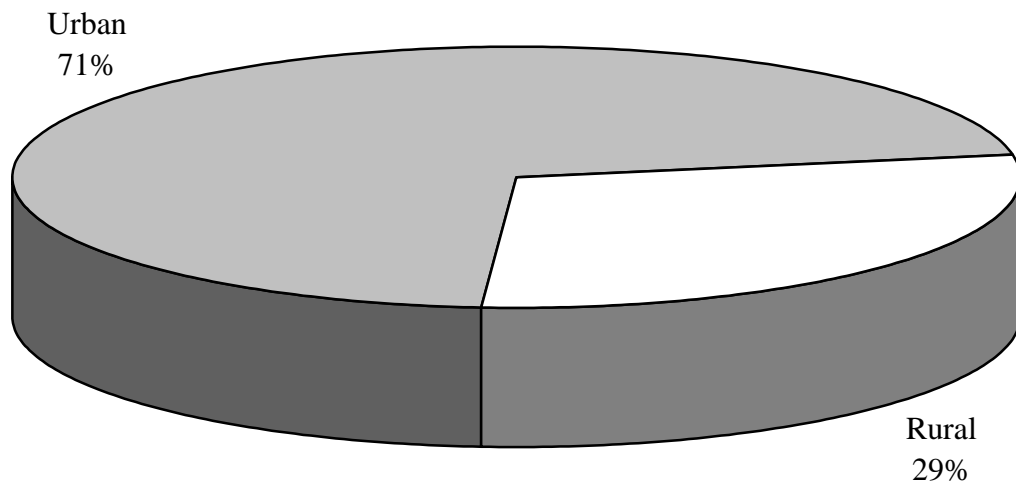
CRASHES BY RURAL/URBAN LOCATION IN 2002

Location	Fatal Crashes	Total Crashes
Rural	423	20,520
Urban	134	50,384
Total	557	70,904

Fatal Crashes

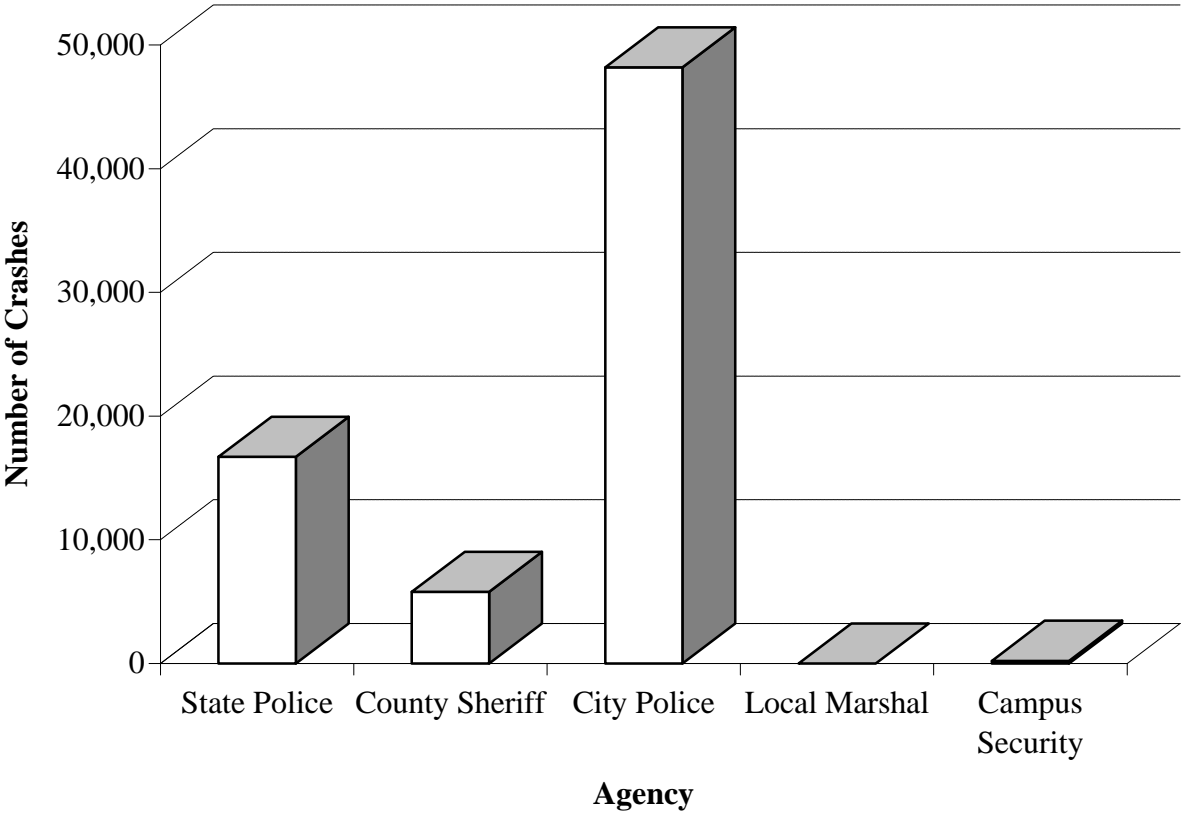


Total Crashes



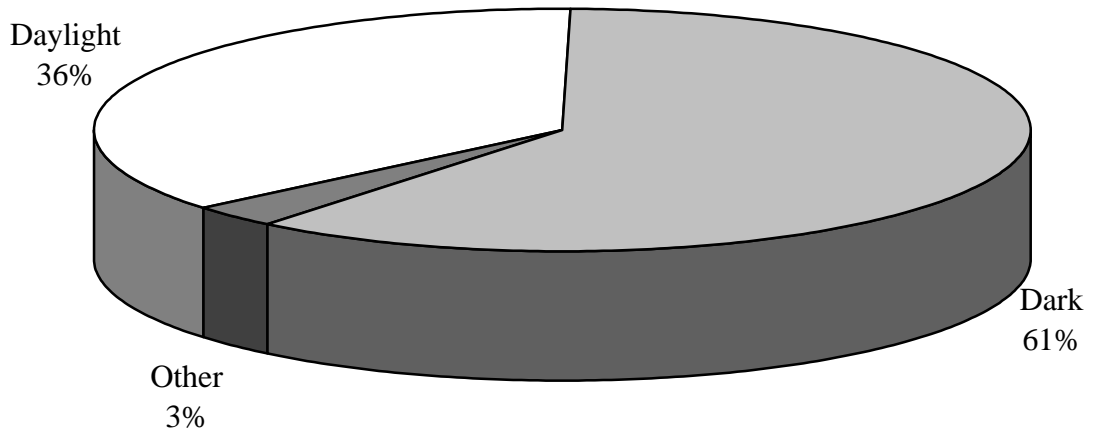
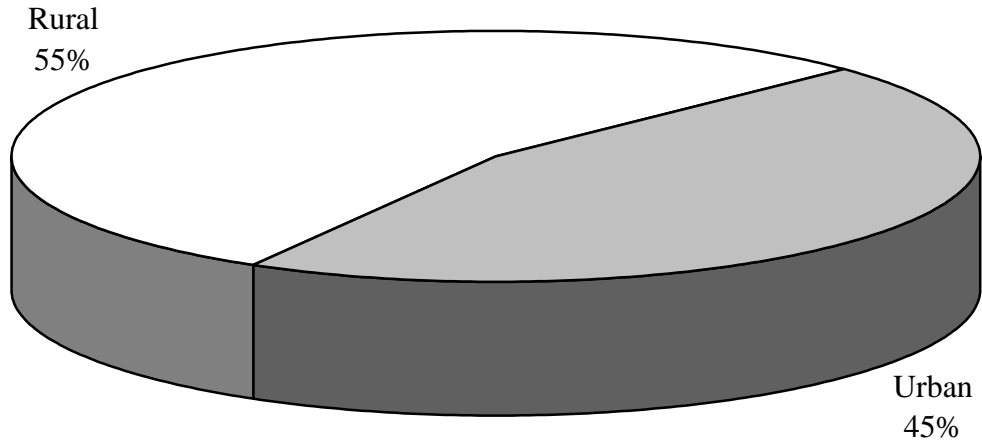
CRASHES BY INVESTIGATING AGENCY IN 2002

Agency	Total Crashes	% of Total
State Police	16,712	23.57%
County Sheriff	5,783	8.16%
City Police	48,181	67.95%
Local Marshal	9	0.01%
Campus Security	219	0.31%
Total	70,904	100.00%



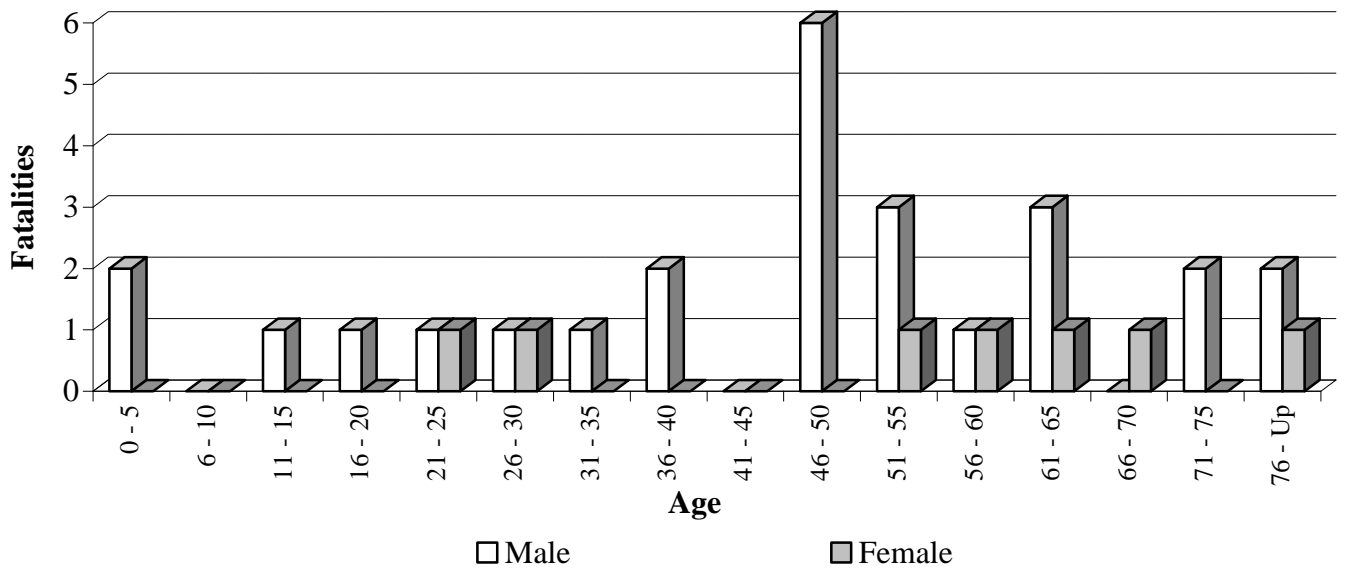
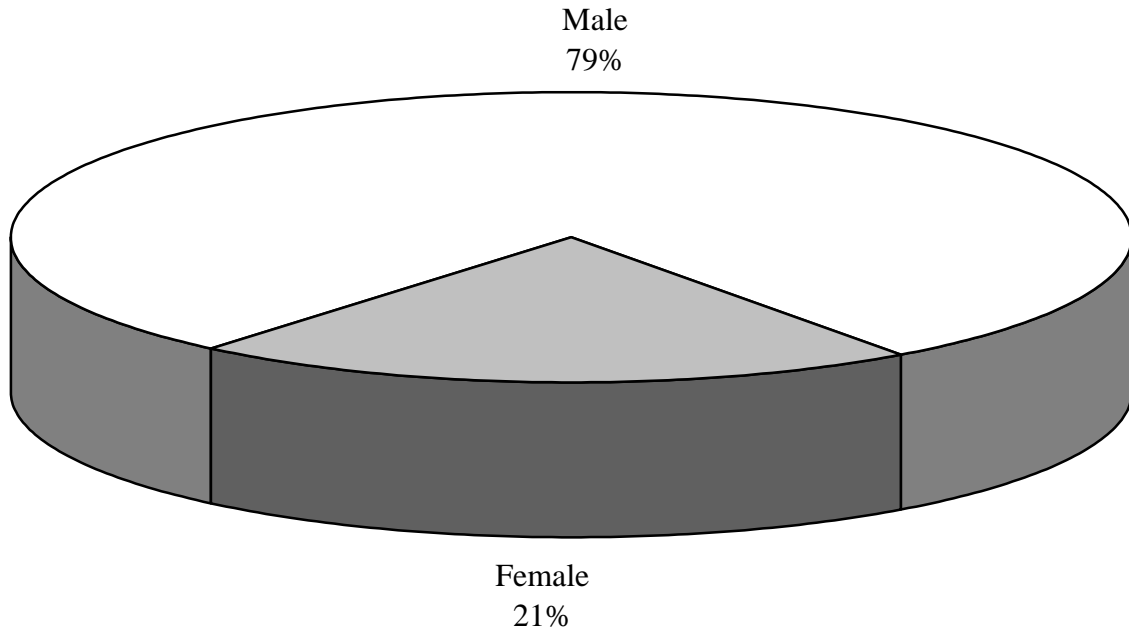
PEDESTRIAN FATALITIES IN 2002

Rural	Urban	Daylight	Dark	Other
18	15	12	20	1



PEDESTRIAN FATALITIES IN 2002 (Cont.)

Male	Female	Total
26	7	33



ARKANSAS' 20 LARGEST CITIES BY POPULATION CRASHES, FATALITIES AND INJURIES IN 2002

City	Fatal Crashes	Fatalities	Injury Crashes	Injuries	P.D.O. *	Total Crashes
Little Rock	18	21	3,111	5,590	5,205	8,334
Fort Smith	9	9	1,564	2,907	2,516	4,089
North Little Rock	4	4	943	1,457	2,597	3,544
Fayetteville	10	12	829	1,309	2,386	3,225
Jonesboro	2	2	902	1,658	1,762	2,666
Pine Bluff	9	10	931	1,994	1,224	2,164
Springdale	2	2	581	1,085	1,552	2,135
Conway	3	7	552	1,084	724	1,279
Rogers	1	1	428	761	812	1,241
Hot Springs	8	10	697	1,047	1,743	2,448
Jacksonville	1	2	331	641	427	759
West Memphis	5	8	434	880	678	1,117
Texarkana	2	2	308	569	503	813
Russellville	4	4	299	512	900	1,203
Paragould	4	5	385	869	512	901
Benton	5	7	251	468	474	730
El Dorado	2	2	334	687	641	977
Sherwood	5	6	258	407	491	754
Bentonville	0	0	386	851	747	1,133
Van Buren	0	0	214	397	557	771

* Property Damage Only

TOTAL CRASHES, FATALITIES AND INJURIES BY COUNTY IN 2002

County	Fatal Crashes	Fatalities	Injury Crashes	Injuries	P.D.O. Crashes	Total Crashes
ARKANSAS	3	3	91	168	88	182
ASHLEY	6	8	215	390	291	512
BAXTER	8	9	326	605	386	720
BENTON	18	20	1,602	3,157	2,451	4,071
BOONE	9	9	367	736	507	883
BRADLEY	2	2	89	168	72	163
CALHOUN	3	3	54	82	53	110
CARROLL	4	4	232	506	237	473
CHICOT	3	3	46	119	33	82
CLARK	14	15	181	302	363	558
CLAY	2	3	119	224	88	209
CLEBURNE	5	6	239	406	227	471
CLEVELAND	0	0	41	58	40	81
COLUMBIA	8	8	273	600	162	443
CONWAY	8	8	236	498	234	478
CRAIGHEAD	12	12	1,147	2,068	1,932	3,091
CRAWFORD	6	6	514	993	920	1,440
CRITTENDEN	12	16	623	1,249	956	1,591
CROSS	8	8	131	288	205	344
DALLAS	2	3	108	207	37	147
DESHA	5	7	143	305	119	267
DREW	8	10	215	437	179	402
FAULKNER	8	13	751	1,466	1,010	1,769
FRANKLIN	4	4	80	150	135	219
FULTON	1	1	56	85	65	122
GARLAND	16	20	1,131	1,780	2,265	3,412
GRANT	5	8	101	211	154	260
GREENE	13	17	430	950	546	989
HEMPSTEAD	9	13	261	455	365	635
HOT SPRING	6	6	300	560	356	662
HOWARD	3	3	114	232	80	197
INDEPENDENCE	8	8	495	882	630	1,133
IZARD	3	3	34	49	18	55
JACKSON	1	2	114	213	101	216
JEFFERSON	16	17	1,183	2,428	1,507	2,706
JOHNSON	7	8	218	397	379	604
LAFAYETTE	2	2	74	153	43	119
LAWRENCE	7	7	155	346	116	278

**TOTAL CRASHES, FATALITIES AND INJURIES
BY COUNTY IN 2002 (CONT.)**

County	Fatal Crashes	Fatalities	Injury Crashes	Injuries	P.D.O. Crashes	Total Crashes
LEE	3	3	76	154	86	165
LINCOLN	6	6	45	96	56	107
LITTLE RIVER	4	4	73	111	107	184
LOGAN	7	7	193	399	122	322
LONOKE	14	20	426	734	612	1,052
MADISON	6	6	149	280	97	252
MARION	3	3	85	196	58	146
MILLER	7	9	377	691	573	957
MISSISSIPPI	10	12	330	608	542	882
MONROE	7	10	37	84	35	79
MONTGOMERY	2	5	121	207	59	182
NEVADA	2	3	56	88	41	99
NEWTON	2	2	63	92	57	122
OUACHITA	6	8	108	187	172	286
PERRY	4	6	49	83	50	103
PHILLIPS	7	9	297	733	175	479
PIKE	2	2	51	89	41	94
POINSETT	6	6	206	347	231	443
POLK	2	2	132	242	185	319
POPE	15	17	518	901	1,135	1,668
PRAIRIE	7	9	50	91	64	121
PULASKI	37	42	5,273	9,191	9,374	14,684
RANDOLPH	5	5	182	369	193	380
SALINE	14	16	630	1,146	1,104	1,748
SCOTT	2	2	86	156	130	218
SEARCY	7	8	49	77	30	86
SEBASTIAN	11	11	1,785	3,348	2,711	4,507
SEVIER	3	3	166	371	133	302
SHARP	3	3	89	175	73	165
ST. FRANCIS	13	14	320	659	304	637
STONE	3	4	41	63	48	92
UNION	13	13	552	1,053	795	1,360
VAN BUREN	5	5	94	180	120	219
WASHINGTON	34	37	1,931	3,370	4,399	6,364
WHITE	15	19	784	1,578	792	1,591
WOODRUFF	5	5	16	36	8	29
YELL	10	10	196	366	160	366
TOTALS	557	641	28,125	52,474	42,222	70,904

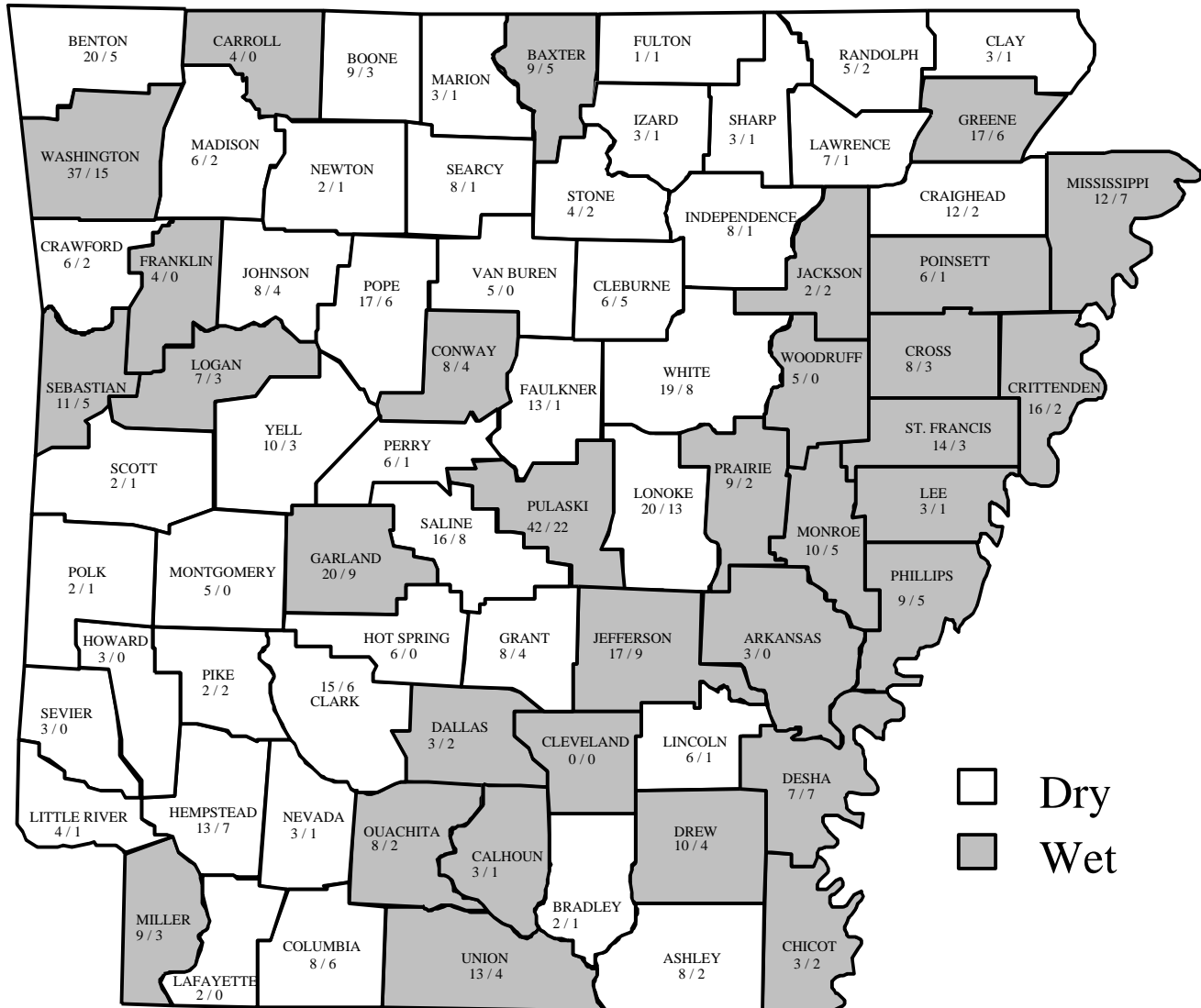
ALCOHOL/DRUG RELATED CRASHES, FATALITIES AND INJURIES BY COUNTY IN 2002

County	Fatal Crashes	Fatalities	Injury Crashes	Injuries	P.D.O. Crashes	Total Crashes
ARKANSAS	0	0	10	14	5	15
ASHLEY	1	2	31	52	20	52
BAXTER	5	5	32	53	16	53
BENTON	5	5	114	206	84	203
BOONE	3	3	22	32	22	47
BRADLEY	1	1	5	15	3	9
CALHOUN	1	1	9	13	7	17
CARROLL	0	0	31	54	14	45
CHICOT	2	2	8	17	4	14
CLARK	6	6	19	35	10	35
CLAY	1	1	10	15	6	17
CLEBURNE	4	5	29	50	14	47
CLEVELAND	0	0	4	5	2	6
COLUMBIA	6	6	25	54	8	39
CONWAY	4	4	28	42	13	45
CRAIGHEAD	2	2	71	113	53	126
CRAWFORD	2	2	38	64	36	76
CRITTENDEN	1	2	28	42	35	64
CROSS	3	3	7	14	8	18
DALLAS	1	2	9	17	2	12
DESHA	5	7	16	32	10	31
DREW	4	4	22	47	6	32
FAULKNER	1	1	46	83	24	71
FRANKLIN	0	0	8	17	7	15
FULTON	1	1	12	22	6	19
GARLAND	8	9	88	134	74	170
GRANT	2	4	11	26	6	19
GREENE	3	6	30	52	17	50
HEMPSTEAD	5	7	22	43	19	46
HOT SPRING	0	0	33	49	14	47
HOWARD	0	0	7	11	5	12
INDEPENDENCE	1	1	43	69	21	65
IZARD	1	1	5	7	5	11
JACKSON	1	2	23	36	6	30
JEFFERSON	8	9	90	166	50	148
JOHNSON	4	4	20	34	13	37
LAFAYETTE	0	0	12	17	6	18
LAWRENCE	1	1	13	29	5	19

**ALCOHOL/DRUG RELATED CRASHES, FATALITIES
AND INJURIES BY COUNTY IN 2002 (CONT.)**

County	Fatal Crashes	Fatalities	Injury Crashes	Injuries	P.D.O. Crashes	Total Crashes
LEE	1	1	16	28	5	22
LINCOLN	1	1	8	15	11	20
LITTLE RIVER	1	1	8	13	11	20
LOGAN	3	3	17	30	4	24
LONOKE	7	13	44	77	22	73
MADISON	2	2	18	37	4	24
MARION	1	1	17	28	7	25
MILLER	2	3	35	59	39	76
MISSISSIPPI	6	7	39	78	21	66
MONROE	3	5	4	10	2	9
MONTGOMERY	0	0	18	21	4	22
NEVADA	1	1	3	5	3	7
NEWTON	1	1	11	11	2	14
OUACHITA	2	2	9	18	9	20
PERRY	1	1	5	11	4	10
PHILLIPS	3	5	21	49	7	31
PIKE	2	2	8	18	1	11
POINSETT	1	1	18	28	15	34
POLK	1	1	8	23	9	18
POPE	6	6	38	76	44	88
PRAIRIE	2	2	4	4	2	8
PULASKI	18	22	370	653	304	692
RANDOLPH	2	2	16	32	6	24
SALINE	6	8	63	112	49	118
SCOTT	1	1	9	14	4	14
SEARCY	1	1	11	19	1	13
SEBASTIAN	5	5	122	211	78	205
SEVIER	0	0	19	42	7	26
SHARP	1	1	8	9	0	9
ST. FRANCIS	3	3	26	42	18	47
STONE	2	2	9	23	2	13
UNION	4	4	53	93	33	90
VAN BUREN	0	0	11	20	5	16
WASHINGTON	13	15	189	319	203	405
WHITE	6	8	52	102	29	87
WOODRUFF	0	0	6	6	1	7
YELL	3	3	23	52	9	35
Totals	205	243	2,367	4,169	1,631	4,203

TOTAL FATALITIES VS. ALCOHOL/DRUG RELATED FATALITIES IN 2002 BY COUNTY



County	Number of Counties	Total Fatalities	Alcohol/Drug Related Fatalities	% Alcohol/Drug Related
Wet	32	329	134	41%
Dry	43	312	109	35%