

ARKANSAS

2004

TRAFFIC CRASH STATISTICS



Prepared by:
Arkansas State Police
Highway Safety Office
1 State Police Plaza Drive
Little Rock, AR 72209
www.asp.arkansas.gov

TABLE OF CONTENTS

INTRODUCTION

2004 ARKANSAS CRASH SUMMARY.....	2
FIVE AND TEN YEAR TRENDS	
FATAL CRASHES AND RATES.....	3
FATALITIES AND RATES.....	4
FATALITIES BY AGE GROUP, 1998-2004.....	5
NONFATAL INJURIES, RATES AND INJURIES BY SEVERITY.....	6 - 7
TOTAL CRASHES AND RATES.....	8
ALCOHOL/DRUG RELATED FATALITIES VS. TOTAL FATALITIES.....	9
PERCENT ALCOHOL/DRUG RELATED FATALITIES ARKANSAS VS. NATIONAL.....	10
ALCOHOL/DRUG RELATED CRASHES VS. TOTAL CRASHES.....	11
ALCOHOL/DRUG RELATED FATAL CRASHES VS. TOTAL FATAL CRASHES.....	12
MOTORCYCLE CRASHES.....	13
RAILROAD CRASHES, FATALITIES AND INJURIES.....	14
CURRENT YEAR (2004)	
FATALITIES BY SAFETY RESTRAINT USAGE	
PERCENT USED AND NOT USED.....	15
FATALITIES BY SAFETY RESTRAINT USAGE BY AGE GROUP.....	16
FATALITIES BY SAFETY RESTRAINT USAGE BY AGE.....	17
FATALITIES BY AGE AND PERSON TYPE.....	18
ALCOHOL/DRUG RELATED FATALITIES BY AGE AND PERSON TYPE.....	19
FATAL CRASHES AND FATALITIES BY MONTH.....	20
CRASHES BY TIME OF DAY AND DAY OF WEEK.....	21
ALCOHOL/DRUG RELATED CRASHES BY TIME OF DAY AND DAY OF WEEK.....	22
FATAL CRASHES BY TIME OF DAY AND DAY OF WEEK.....	23
ALCOHOL/DRUG RELATED FATAL CRASHES BY TIME OF DAY AND DAY OF WEEK.....	24
CRASHES BY LIGHTING CONDITIONS.....	25
CRASHES BY ROAD SURFACE CONDITIONS.....	26
CRASHES BY ROAD SYSTEM.....	27
CRASH RATES BY ROAD SYSTEM.....	28
CRASHES BY RURAL/URBAN LOCATION.....	29
CRASHES BY INVESTIGATING AGENCY.....	30
CRASHES BY TYPE OF COLLISION.....	31
VEHICLES INVOLVED BY FIRST HARMFUL EVENT.....	32
DRIVERS BY OPERATOR FACTOR.....	33
DRIVERS IN ALCOHOL/DRUG RELATED CRASHES BY OPERATOR FACTOR.....	34
PEDESTRIAN FATALITIES.....	35 - 36
ARKANSAS' 20 LARGEST CITIES BY POPULATION - CRASHES, FATALITIES AND INJURIES.....	37
ARKANSAS' 20 LARGEST CITIES BY POPULATION - ALCOHOL & OTHER DRUG RELATED CRASHES, FATALITIES AND INJURIES.....	38
COUNTY BREAKDOWNS	
TOTAL CRASHES, FATALITIES AND INJURIES BY COUNTY.....	39 - 40
ALCOHOL/DRUG RELATED CRASHES, FATALITIES AND INJURIES BY COUNTY.....	41 - 42
FATALITIES VS. ALCOHOL/DRUG RELATED FATALITIES BY COUNTY.....	43

2004 ARKANSAS CRASH SUMMARY

- **On all public roads in Arkansas during 2004 there were:**

74,059 total crashes reported, a 4.4% increase from 2003

626 fatal crashes reported, an 11.0 % increase from 2003

721 fatalities reported, a 12.5% increase from 2003

269 alcohol/drug related fatalities, a 1.1 % decrease from 2003

31.0 billion vehicle miles traveled, a 3.8 % increase from 2003

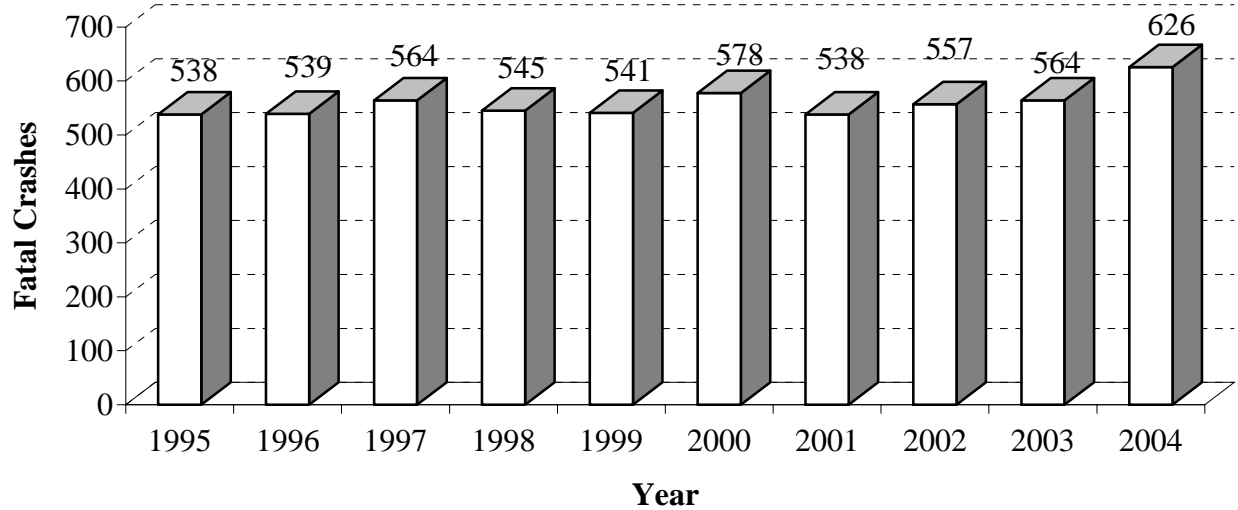
- **The fatality rate increased from 2.1 in 2003 to 2.3 fatalities per 100 MVM* traveled.**
- **The fatal crash rate increased from 1.9 fatal crashes in 2003 to 2.0 per 100 MVM* traveled.**

* Million vehicle miles

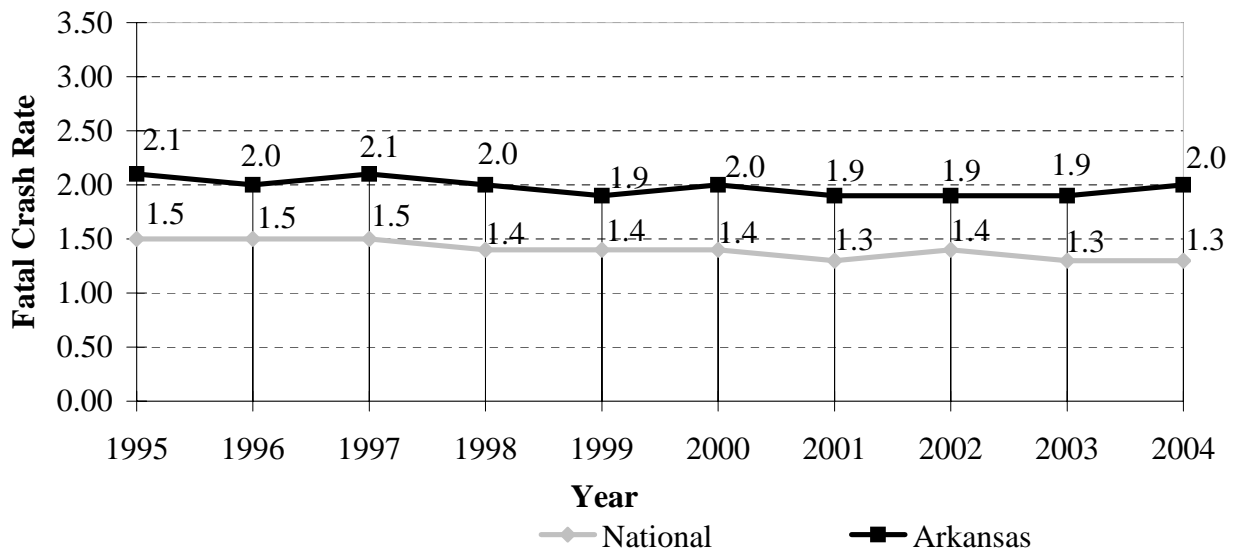
FATAL CRASHES AND RATES

10 YEAR TRENDS

STATEWIDE FATAL CRASHES



FATAL CRASH RATE (FATAL CRASHES PER 100 MVM*)

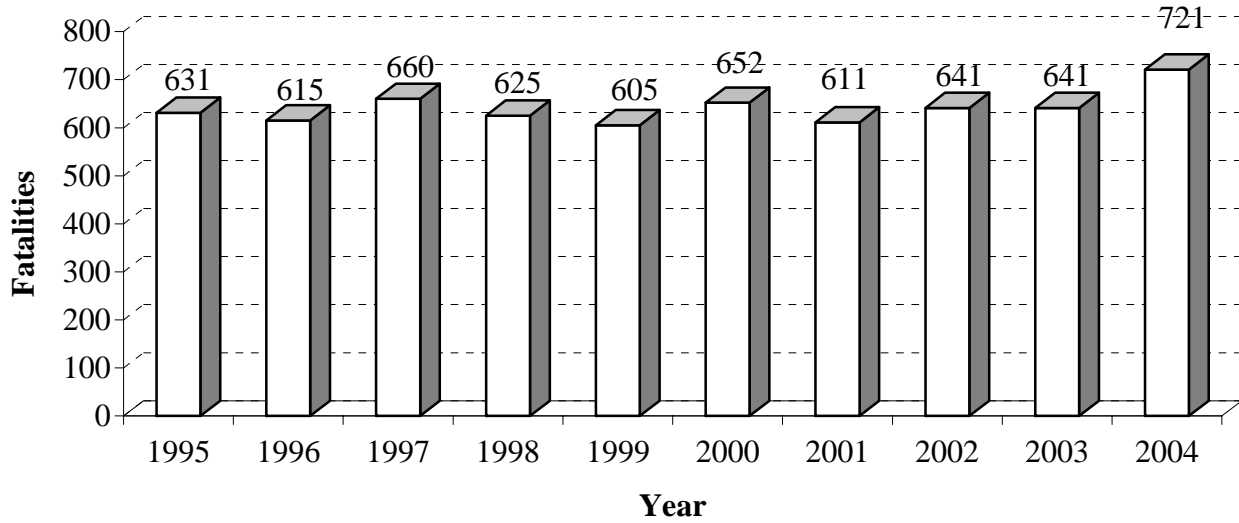


* Million vehicle miles

FATALITIES AND RATES

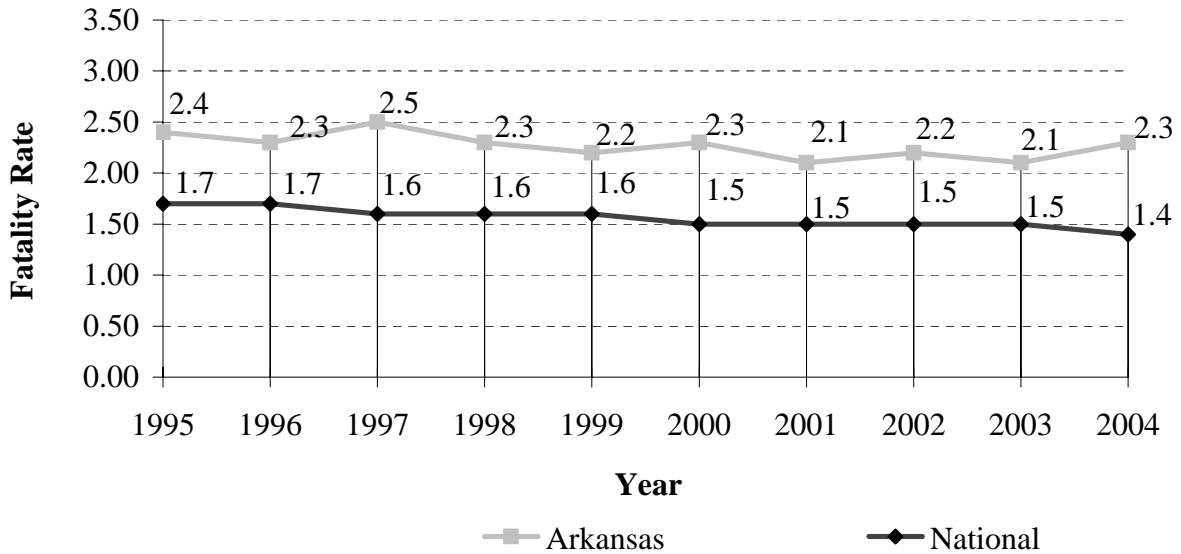
10 YEAR TRENDS

STATEWIDE FATALITIES



FATALITY RATE (FATALITIES PER 100 MVM*)

ARKANSAS FATALITY RATE (FATALITIES PER 100 MVM*)

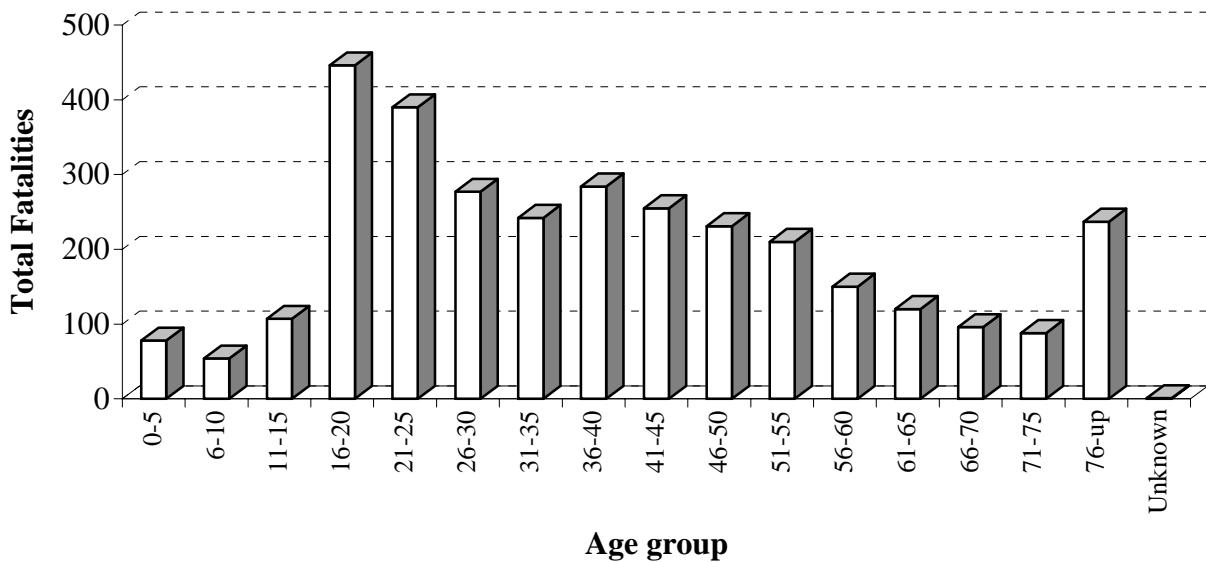


* Million vehicle miles

FATALITIES BY AGE GROUP, 2000-2004

5 YEAR TRENDS

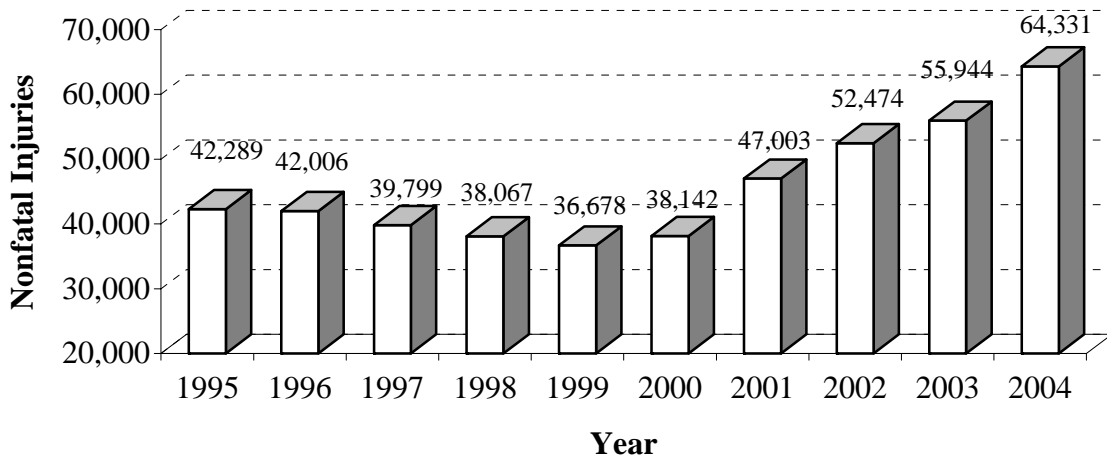
Age Group	2000	2001	2002	2003	2004	Total Fatalities
0-5	12	22	14	17	13	78
6-10	10	10	6	11	17	54
11-15	28	21	19	18	21	107
16-20	78	99	91	77	101	446
21-25	62	70	85	86	87	390
26-30	54	48	63	47	65	277
31-35	49	48	50	44	51	242
36-40	65	56	57	56	50	284
41-45	55	32	46	59	63	255
46-50	48	36	40	41	66	231
51-55	43	43	36	46	42	210
56-60	38	26	22	35	29	150
61-65	19	22	30	28	21	120
66-70	25	16	14	19	22	96
71-75	15	15	29	11	18	88
76-up	51	47	39	46	54	237
Unknown	0	0	0	0	1	1
Total	652	611	641	641	721	3,266



NONFATAL INJURIES AND RATES

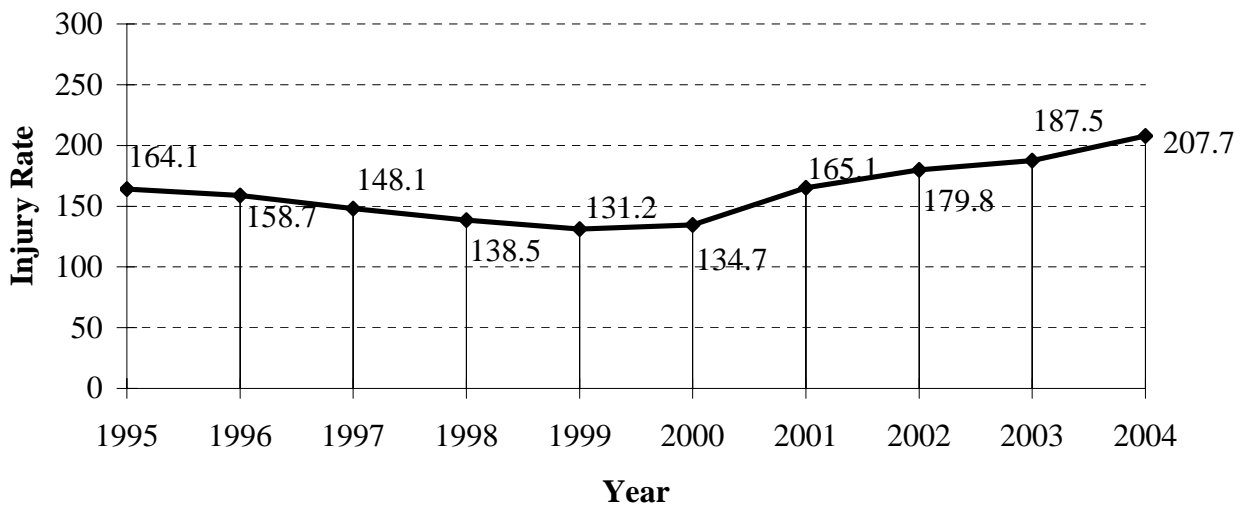
10 YEAR TRENDS

STATEWIDE NONFATAL INJURIES



Note: The greatest increase in total number of nonfatal injuries in 2001 thru 2004 is due to an increase in police reported possible injuries.

INJURY RATE (INJURIES PER 100 MVM*)



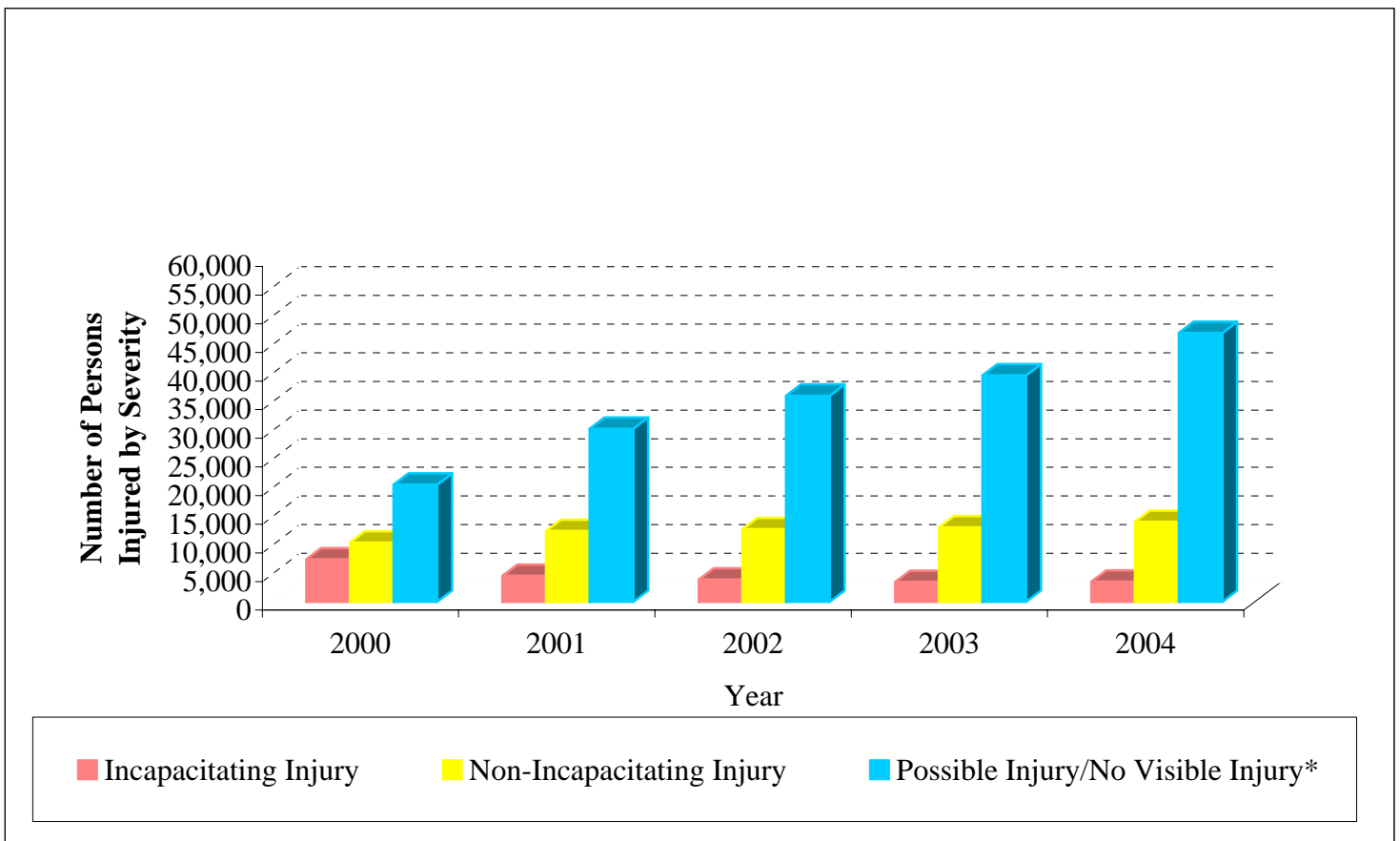
* Million vehicle miles

PERSONS INVOLVED IN CRASHES BY INJURY SEVERITY

5 YEAR TREND

Injury Description	Number of Persons				
	2000	2001	2002	2003	2004
Fatal Injury	652	611	641	641	721
Incapacitating Injury	7,412	4,516	3,856	3,462	3,508
Non-Incapacitating Injury	10,297	12,320	12,648	12,977	13,927
Possible Injury/No Visible Injury*	20,433	30,166	35,966	39,505	46,896
No Injury/Property Damage Only	149,225	135,814	137,185	130,545	131,148

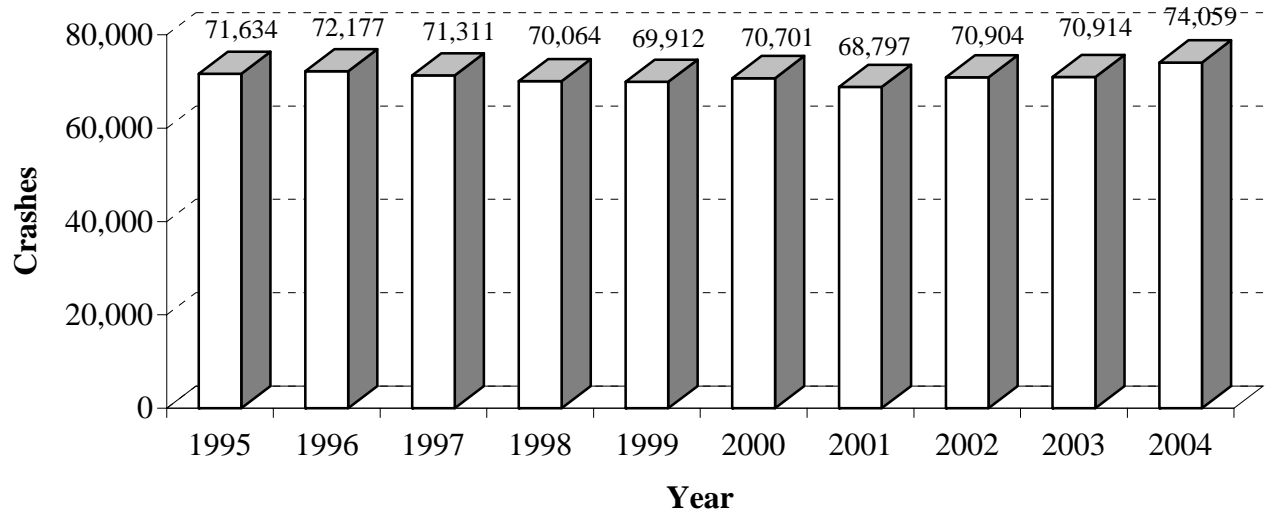
* Note: Terminology for Possible Injury was changed to No Visible Injury in May 2000.



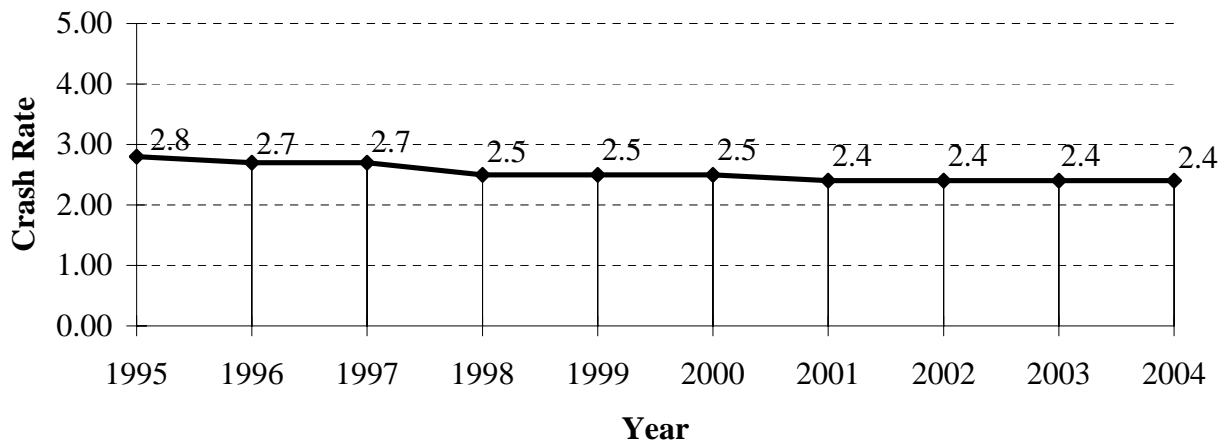
TOTAL CRASHES AND RATES

10 YEAR TRENDS

STATEWIDE CRASHES



CRASH RATE (CRASHES PER MVM*)

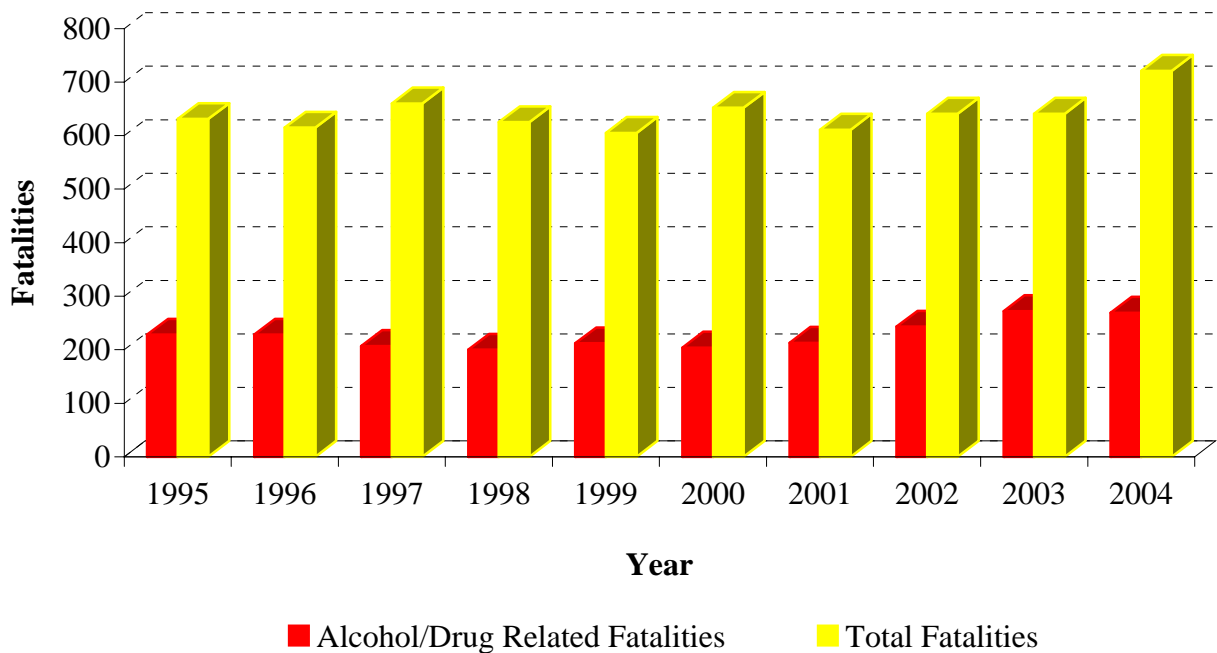


* Million vehicle miles

ALCOHOL/DRUG RELATED FATALITIES VS. TOTAL FATALITIES

10 YEAR TRENDS

Year	Alcohol/Drug Related Fatalities	Total Fatalities	Alcohol/Drug Fatalities as a % of Total
1995	228	631	36%
1996	228	615	37%
1997	207	660	31%
1998	200	625	32%
1999	212	605	35%
2000	204	652	31%
2001	213	611	35%
2002	243	641	38%
2003	272	641	42%
2004	269	721	37%

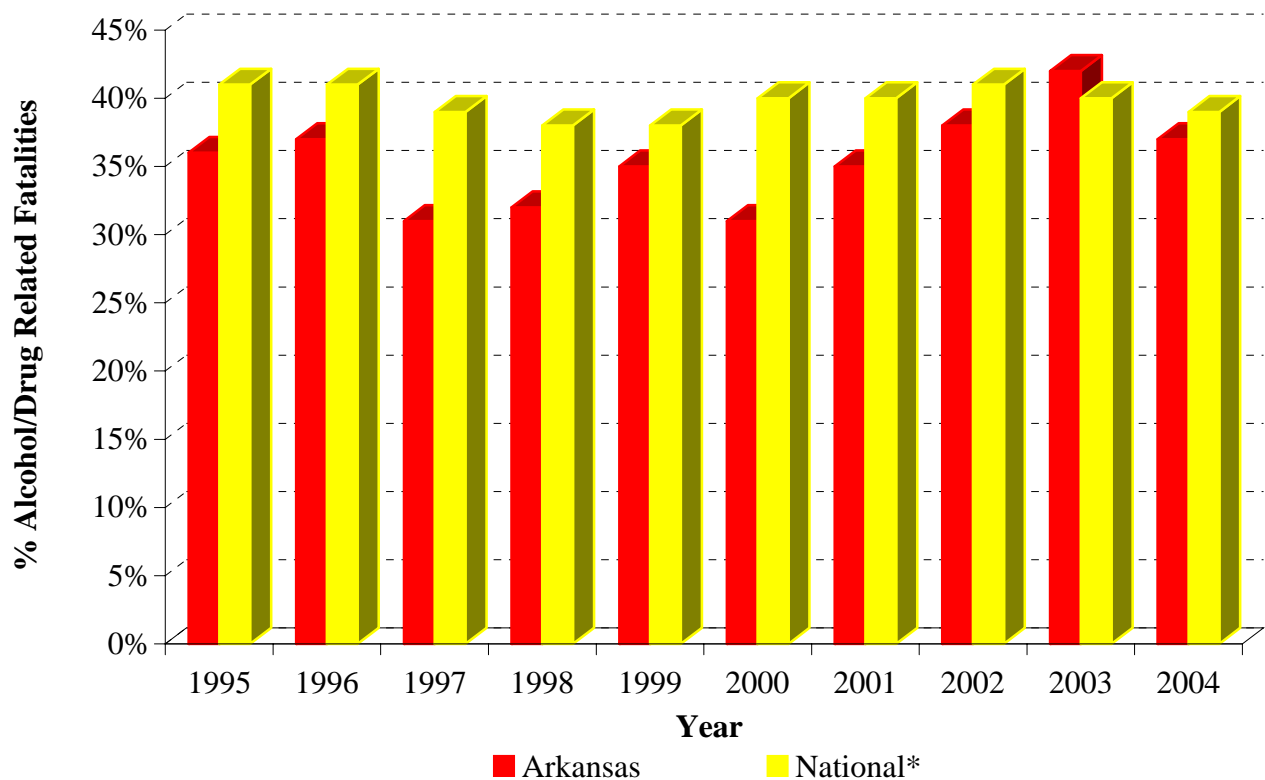


PERCENT ALCOHOL/DRUG RELATED FATALITIES ARKANSAS VS. NATIONAL

10 YEAR TRENDS

Year	Arkansas	National*
1995	36%	41%
1996	37%	41%
1997	31%	39%
1998	32%	38%
1999	35%	38%
2000	31%	40%
2001	35%	40%
2002	38%	41%
2003	42%	40%
2004	37%	39%

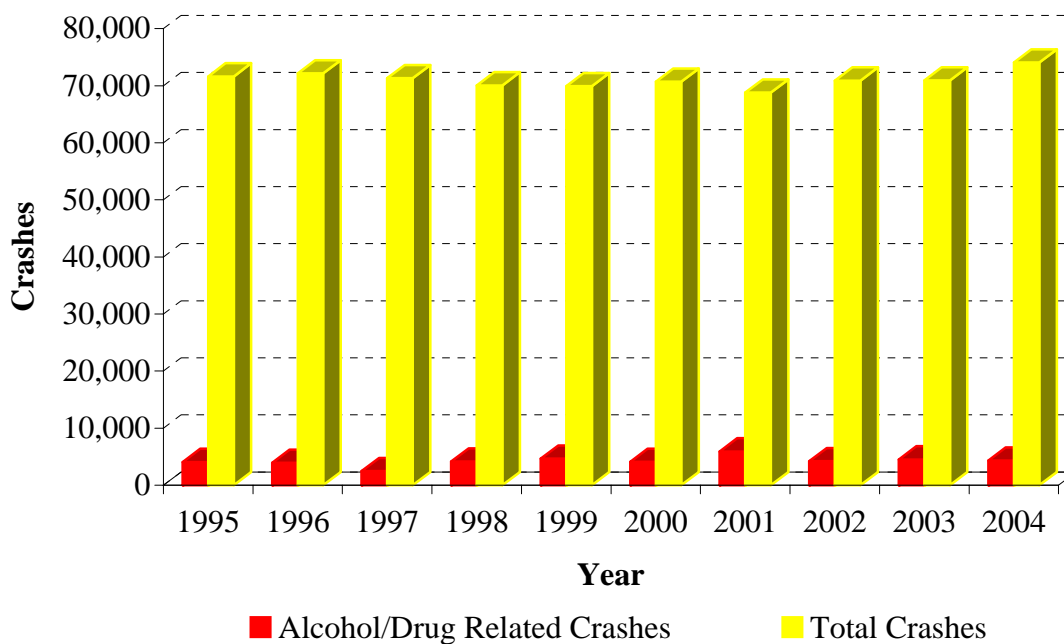
* Note: National figures represent alcohol related only.



ALCOHOL/DRUG RELATED CRASHES VS. TOTAL CRASHES

10 YEAR TRENDS

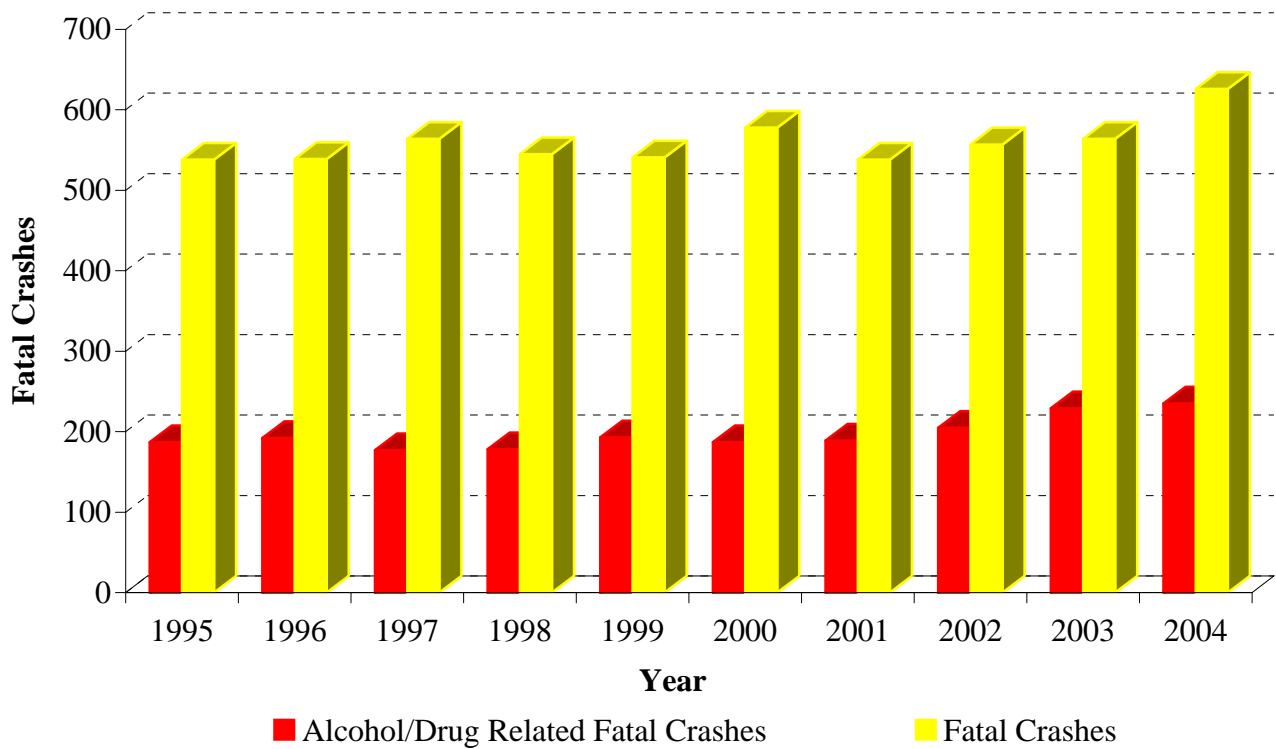
Year	Alcohol/Drug Related Crashes	Total Crashes	Alcohol/Drug as a % of Total Crashes
1995	4,054	71,634	6%
1996	3,921	72,177	5%
1997	2,452	71,311	3%
1998	4,125	70,064	6%
1999	4,645	69,912	7%
2000	4,097	70,701	6%
2001	5,912	68,797	9%
2002	4,203	70,904	6%
2003	4,503	70,914	6%
2004	4,293	74,059	6%



ALCOHOL/DRUG RELATED FATAL CRASHES VS. TOTAL FATAL CRASHES

10 YEAR TRENDS

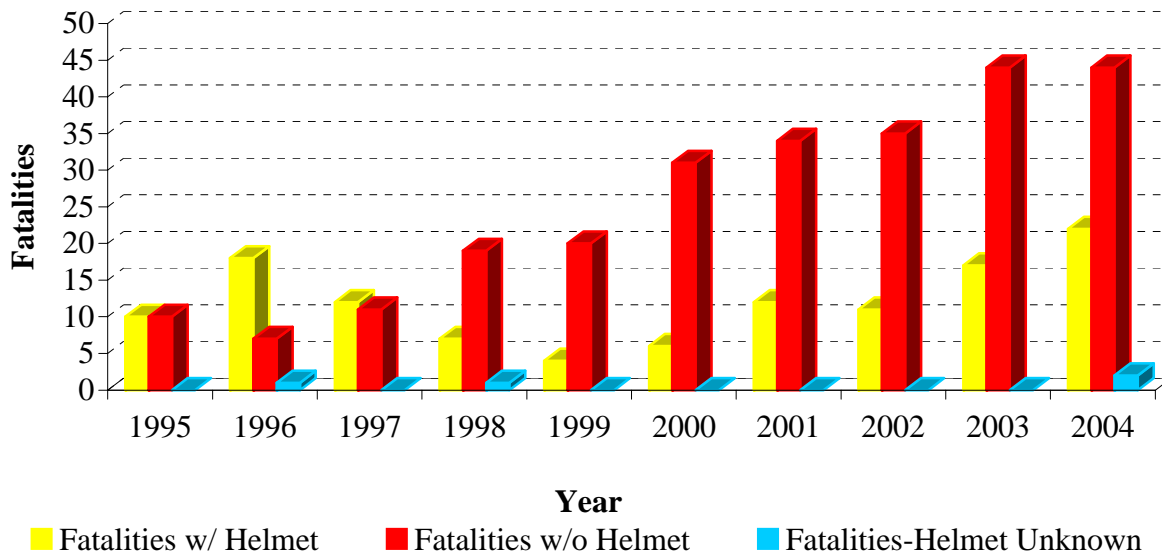
Year	Alcohol/Drug Related Fatal Crashes	Fatal Crashes	Alcohol/Drug Fatal Crashes as a % of Total
1995	187	538	35%
1996	192	539	36%
1997	177	564	31%
1998	178	545	33%
1999	193	541	36%
2000	187	578	32%
2001	189	538	35%
2002	205	557	37%
2003	229	564	41%
2004	235	626	37%



MOTORCYCLE CRASHES

10 YEAR TRENDS

Year	Total Crashes	Non Fatal Injuries	Fatal Crashes	Total Fatalities	Fatalities w/ Helmet	Fatalities w/o Helmet	Fatalities Helmet Use Unknown
1995	657	471	20	20	10	10	0
1996	576	369	23	26	18	7	1
1997	571	499	23	23	12	11	0
1998	625	541	26	27	7	19	1
1999	647	588	23	24	4	20	0
2000	871	744	37	37	6	31	0
2001	1,032	919	41	46	12	34	0
2002	1,041	979	46	46	11	35	0
2003	1,117	1002	57	61	17	44	0
2004	1,403	1,360	66	68	22	46	0

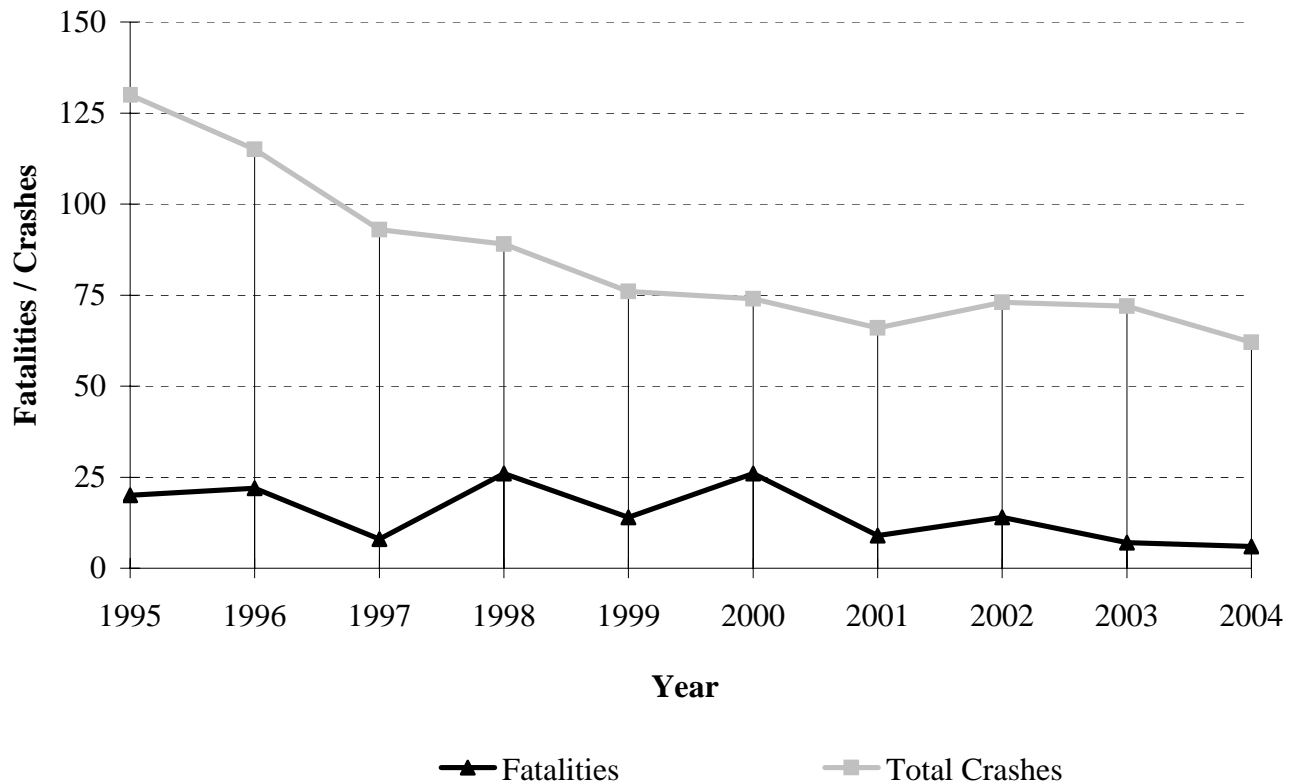


RAILROAD CRASHES, FATALITIES AND INJURIES

10 YEAR TRENDS

Year	Fatal Crashes	Nonfatal Injury Crashes	P.D.O. * Crashes	Total Crashes	Fatalities	Nonfatal Injuries
1995	16	51	63	130	20	80
1996	20	41	54	115	22	52
1997	7	37	49	93	8	48
1998	20	30	39	89	25	49
1999	12	25	39	76	14	40
2000	17	21	36	74	26	36
2001	9	25	32	66	9	36
2002	13	30	30	73	14	42
2003	5	32	35	72	7	41
2004	6	25	31	62	6	33

* Property Damage Only

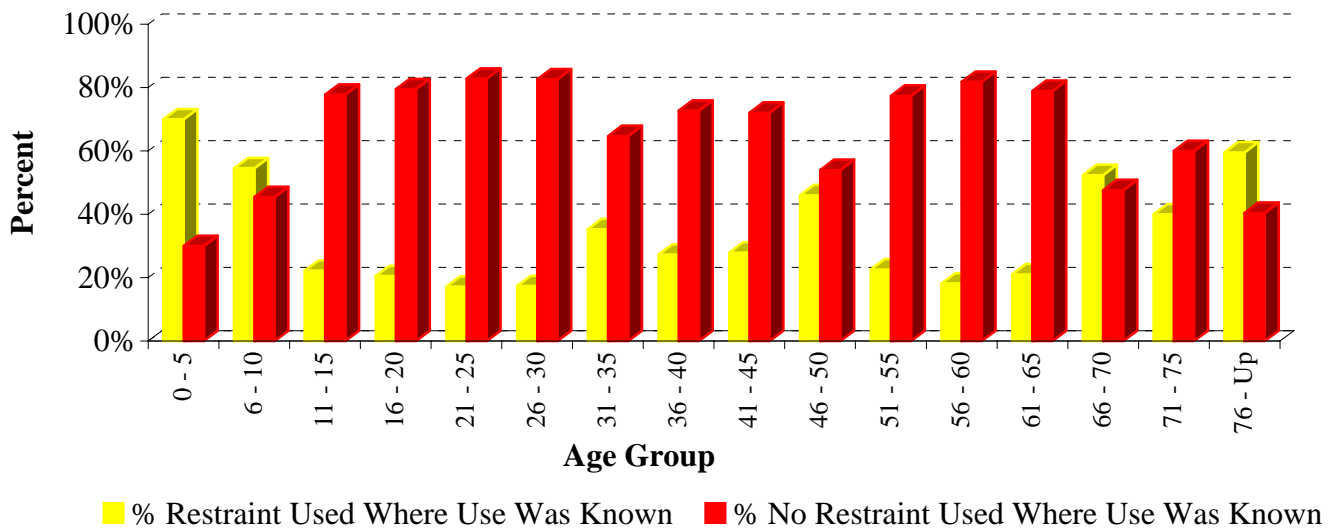


FATALITIES BY SAFETY RESTRAINT USAGE, PERCENT USED AND NOT USED

(Non-Motorist and Motorcycle Fatalities not included)

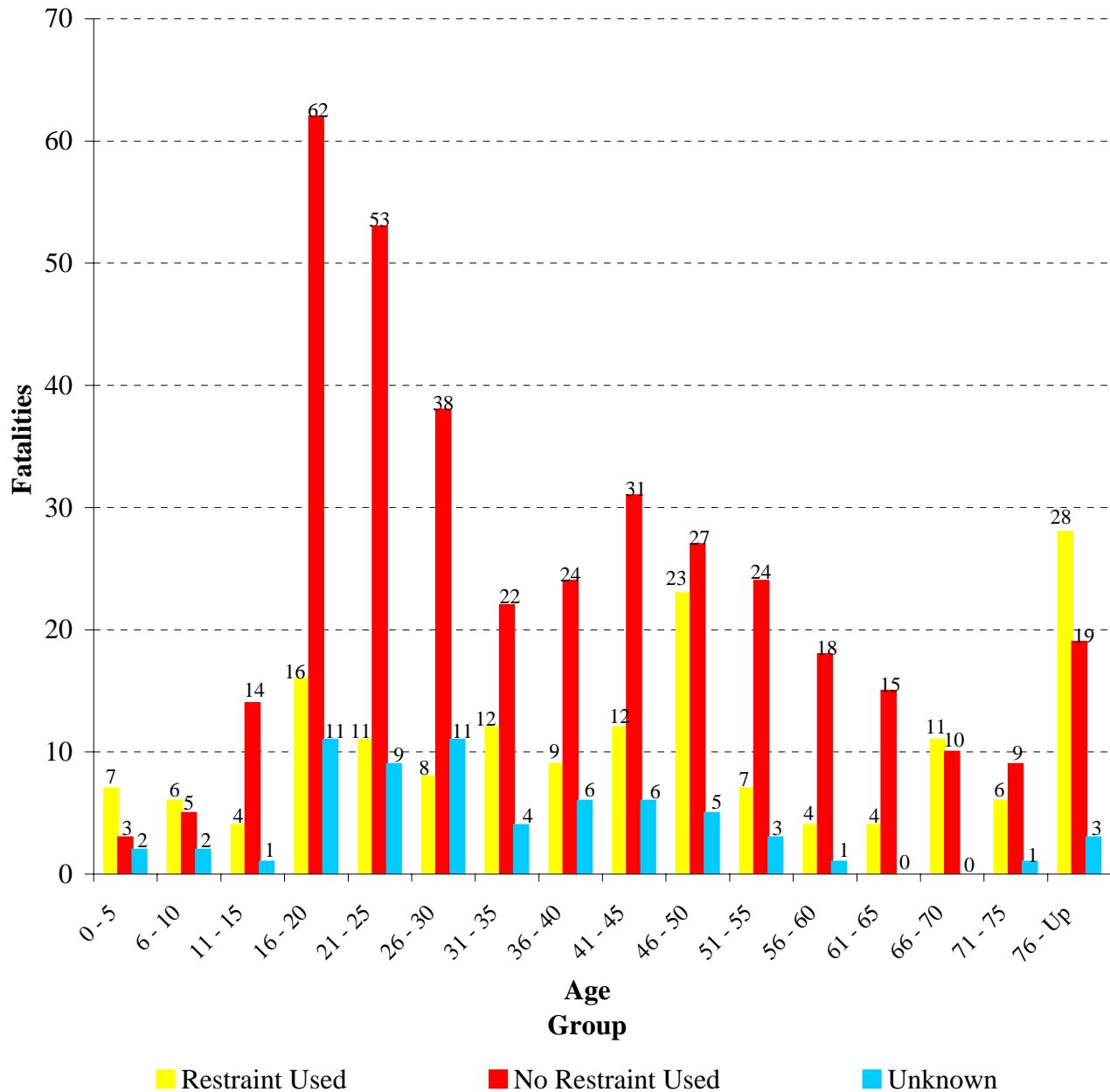
Age Group	Restraint Used	No Restraint Used	Unknown	% Restraint Used *	% No Restraint Used *
0 - 5	7	3	2	70%	30%
6 - 10	6	5	2	55%	45%
11 - 15	4	14	1	22%	78%
16 - 20	16	62	11	21%	79%
21 - 25	11	53	9	17%	83%
26 - 30	8	38	11	17%	83%
31 - 35	12	22	4	35%	65%
36 - 40	9	24	6	27%	73%
41 - 45	12	31	6	28%	72%
46 - 50	23	27	5	46%	54%
51 - 55	7	24	3	23%	77%
56 - 60	4	18	1	18%	82%
61 - 65	4	15	0	21%	79%
66 - 70	11	10	0	52%	48%
71 - 75	6	9	1	40%	60%
76 - Up	28	19	3	60%	40%
Total	168	374	65	31%	69%

* Percentage calculated using only fatalities where restraint use was known.



FATALITIES BY SAFETY RESTRAINT USAGE BY AGE GROUP

(Motorcyclists and non-motorists are excluded.)



FATALITIES BY SAFETY RESTRAINT BY AGE

(Motorcyclists and non-motorists are excluded.)

Age	None Used	Child Safety Seat	Lap And/Or Shoulder Belt	Unknown		Age	None Used	Child Safety Seat	Lap And/Or Shoulder Belt	Unknown
1	1	4	0	1		48	3	0	4	2
2	1	2	1	0		49	7	0	1	0
4	1	0	0	1		50	3	0	3	1
6	1	0	2	1		51	4	0	0	2
7	2	0	1	0		52	5	0	1	0
8	1	0	2	0		53	3	0	2	1
9	1	0	1	1		54	4	0	2	0
11	1	0	2	1		55	8	0	2	0
13	3	0	1	0		56	2	0	1	0
14	2	0	0	0		57	2	0	1	0
15	8	0	1	0		58	7	0	0	1
16	14	0	7	1		59	4	0	0	0
17	16	0	0	0		60	3	0	2	0
18	16	0	5	5		61	4	0	0	0
19	11	0	2	3		62	4	0	0	0
20	5	0	2	2		63	2	0	3	0
21	8	0	1	3		64	4	0	0	0
22	11	0	2	2		65	1	0	1	0
23	9	0	2	3		66	1	0	4	0
24	11	0	3	1		67	5	0	1	0
25	14	0	3	0		68	1	0	4	0
26	4	0	2	4		69	3	0	2	0
27	14	0	2	3		71	1	0	2	0
28	8	0	1	1		72	2	0	1	0
29	8	0	1	2		73	2	0	1	1
30	4	0	2	1		74	1	0	1	0
31	3	0	3	0		75	3	0	1	0
32	5	0	5	1		76	6	0	2	0
33	8	0	1	1		77	1	0	2	1
34	0	0	3	1		78	0	0	2	0
35	6	0	0	1		79	1	0	5	0
36	4	0	1	5		80	1	0	3	0
37	5	0	3	0		81	1	0	3	0
38	2	0	2	1		82	0	0	4	0
39	8	0	2	0		83	1	0	2	1
40	5	0	1	0		84	1	0	1	0
41	8	0	3	1		85	1	0	2	0
42	5	0	5	3		87	3	0	0	0
43	5	0	3	0		88	1	0	0	0
44	9	0	0	2		90	1	0	0	0
45	4	0	1	0		91	0	0	0	1
46	8	0	8	0		94	0	0	2	0
47	6	0	7	2		95	1	0	0	0
						Total	374	6	162	65

FATALITIES BY AGE AND PERSON TYPE

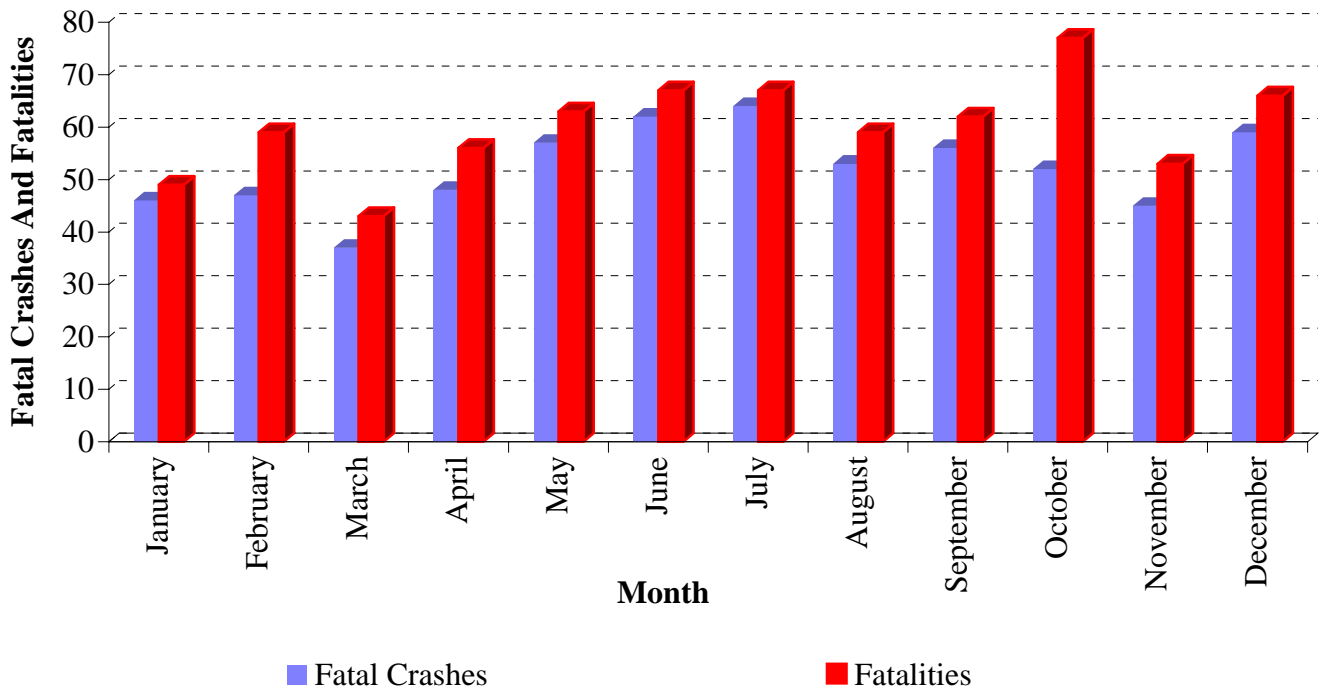
Age	Driver	Occupant	Non-Motorist		Age	Driver	Occupant	Non-Motorist
1	0	6	0		48	9	1	0
2	0	4	0		49	7	3	1
4	0	2	0		50	4	5	1
5	0	1	0		51	6	0	0
6	0	4	0		52	7	1	1
7	0	3	1		53	4	2	0
8	0	3	0		54	6	1	0
9	0	3	2		55	12	2	0
10	0	0	1		56	2	1	0
11	0	4	0		57	2	2	2
13	0	4	0		58	5	3	0
14	0	2	1		59	4	2	0
15	2	7	1		60	4	1	1
16	7	15	3		61	3	1	0
17	12	5	0		62	2	2	0
18	21	6	0		63	4	1	0
19	15	3	2		64	2	3	0
20	8	2	2		65	1	1	1
21	10	4	0		66	4	1	0
22	13	3	1		67	5	1	1
23	10	5	0		68	5	0	0
24	16	1	1		69	3	2	0
25	17	6	0		71	3	0	0
26	7	5	0		72	2	1	0
27	19	2	1		73	4	0	1
28	8	3	0		74	2	0	0
29	10	1	1		75	3	2	0
30	7	0	1		76	3	5	0
31	6	0	2		77	4	0	0
32	10	2	1		78	3	0	0
33	8	4	0		79	4	2	0
34	6	2	2		80	4	0	1
35	7	1	0		81	3	1	0
36	10	3	0		82	3	1	1
37	5	4	1		83	3	1	0
38	3	2	0		84	1	1	0
39	9	2	2		85	2	1	0
40	6	2	1		87	2	1	0
41	13	0	3		88	1	0	1
42	12	4	0		90	1	0	0
43	6	3	0		91	1	0	0
44	9	3	3		94	1	1	0
45	6	1	0		95	1	0	0
46	14	4	0		99	0	0	1
47	16	1	0					
					Total	480	195	46

ALCOHOL/DRUG RELATED FATALITIES BY AGE AND PERSON TYPE

Age	Driver	Occupant	Non-Motorist		Age	Driver	Occupant	Non-Motorist
1	0	2	0		40	1	1	1
2	0	2	0		41	4	0	1
7	0	2	0		42	5	1	0
9	0	1	1		43	2	2	0
10	0	0	1		44	3	3	1
11	0	1	0		45	1	1	0
13	0	2	0		46	9	1	0
14	0	0	1		47	6	1	0
15	0	2	0		48	5	0	0
16	1	5	1		49	5	0	0
17	4	2	0		50	3	2	1
18	10	4	0		51	4	0	0
19	5	0	0		52	3	0	0
20	4	0	0		53	0	1	0
21	4	3	0		54	2	0	0
22	5	2	0		55	2	1	0
23	4	5	0		57	0	0	1
24	8	0	0		58	4	1	0
25	12	3	0		59	0	1	0
26	3	4	0		60	1	0	0
27	11	0	0		61	2	0	0
28	3	2	0		66	1	0	0
29	6	1	0		67	1	0	0
30	4	0	0		69	1	1	0
31	1	0	0		75	1	0	0
32	5	0	0		76	0	1	0
33	4	2	0		78	2	0	0
34	3	0	1		79	1	0	0
35	5	1	0		82	0	0	1
36	4	1	0		83	1	0	0
37	2	3	0		87	0	1	0
38	1	2	0		94	0	1	0
39	6	1	0		Total	185	73	11

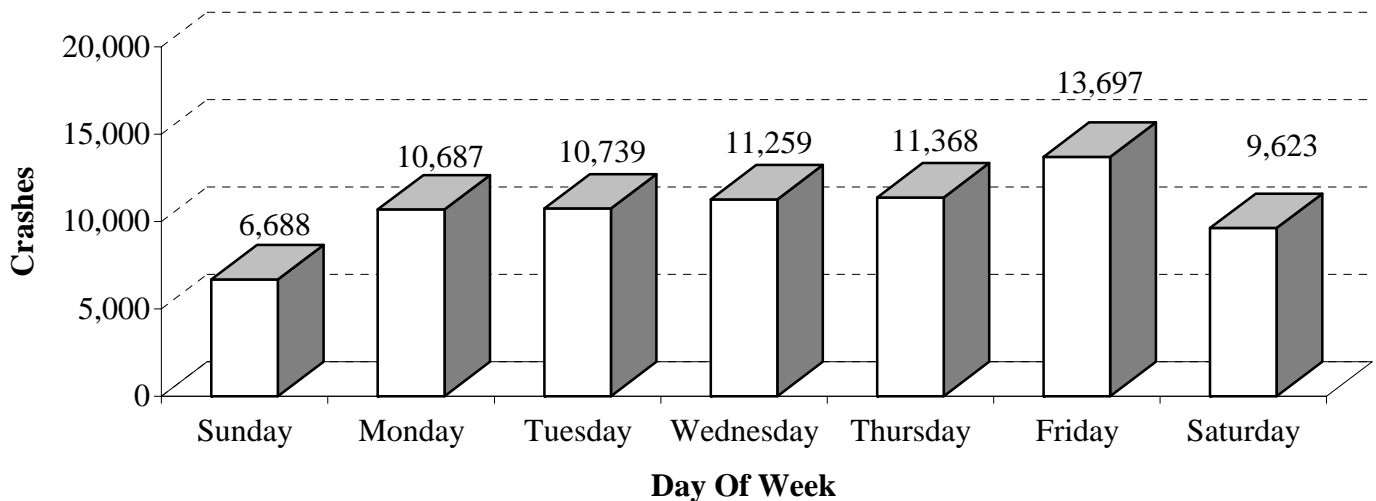
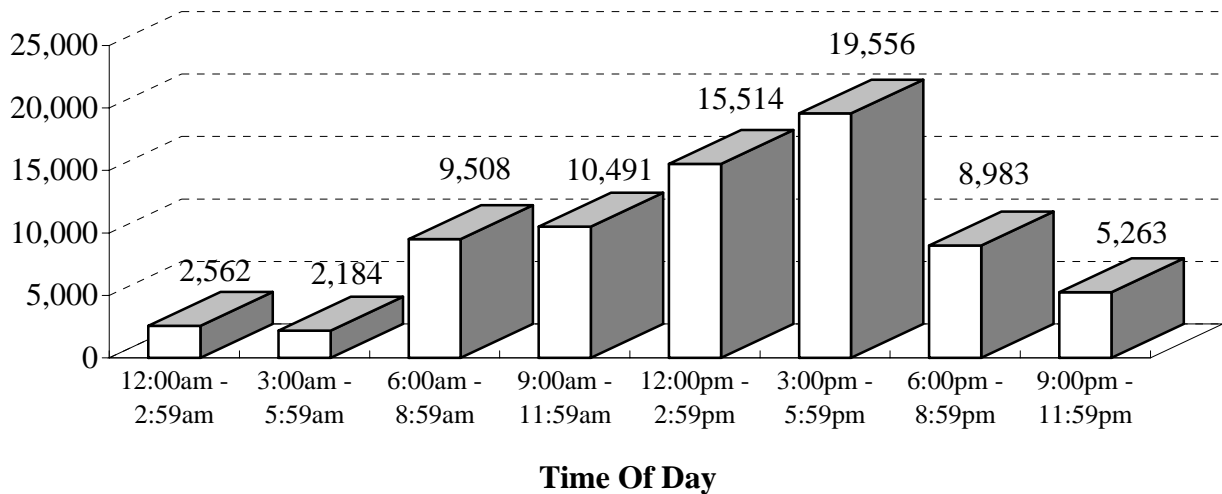
FATAL CRASHES AND FATALITIES BY MONTH

Month	Fatal Crashes	Fatalities
January	46	49
February	47	59
March	37	43
April	48	56
May	57	63
June	62	67
July	64	67
August	53	59
September	56	62
October	52	77
November	45	53
December	59	66
Total	626	721



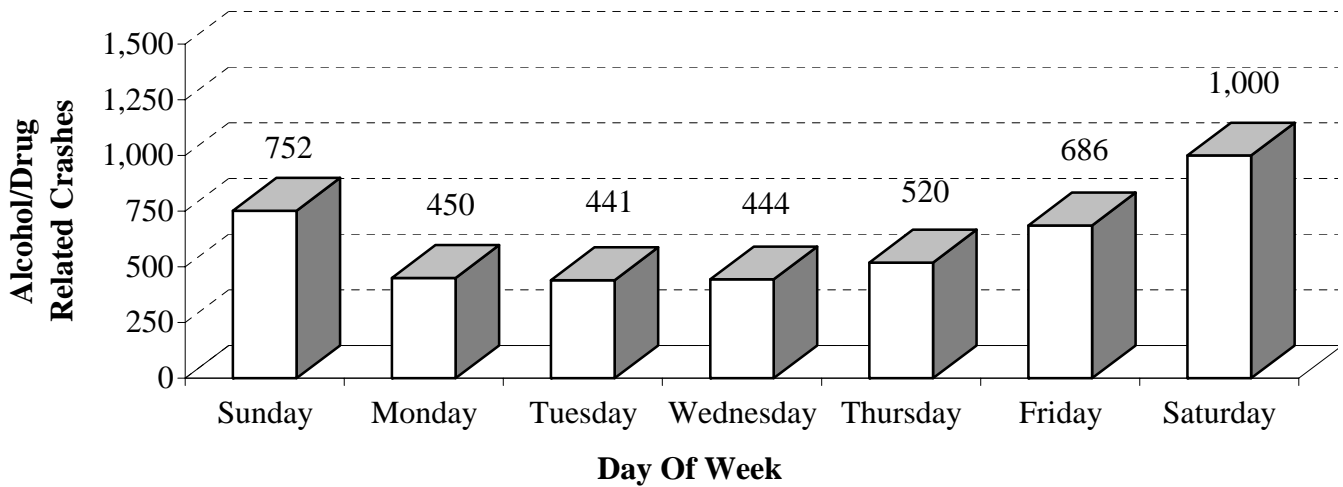
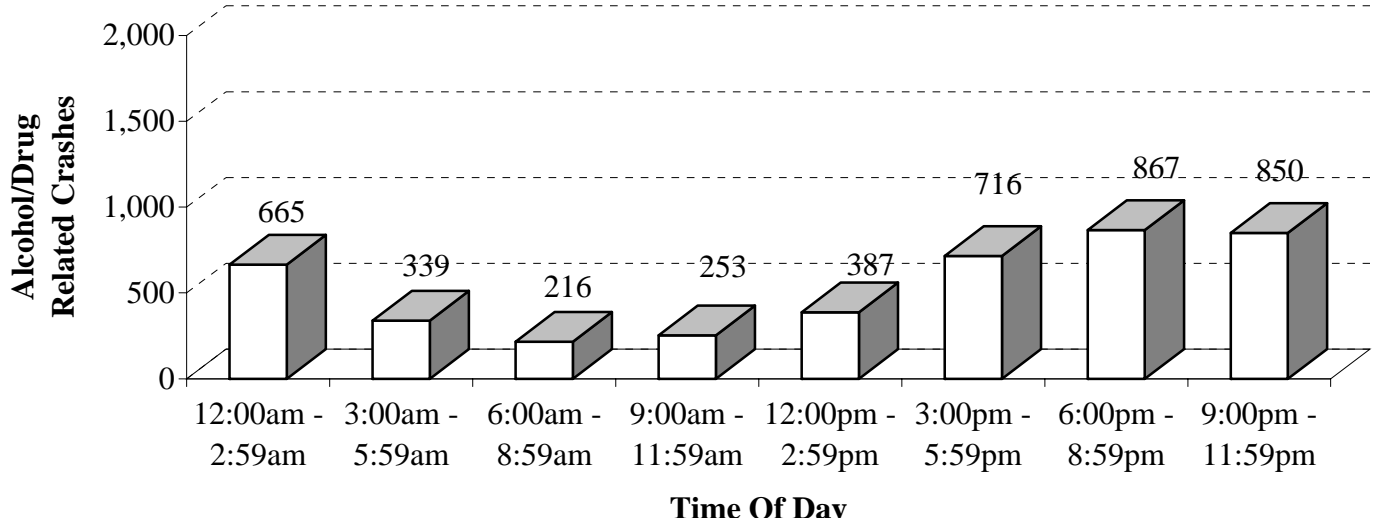
CRASHES BY TIME OF DAY AND DAY OF WEEK

Time of Day	Sunday	Monday	Tuesday	Wednesday	Thursday	Friday	Saturday	Total
12:00am - 2:59am	593	209	217	223	318	327	675	2,562
3:00am - 5:59am	422	257	237	252	276	321	419	2,184
6:00am - 8:59am	458	1,672	1,714	1,742	1,696	1,614	612	9,508
9:00am - 11:59am	831	1,536	1,525	1,602	1,569	1,933	1,495	10,491
12:00pm - 2:59pm	1,396	2,217	2,227	2,374	2,283	2,974	2,043	15,514
3:00pm - 5:59pm	1,382	3,031	3,080	3,143	3,247	3,783	1,890	19,556
6:00pm - 8:59pm	1,041	1,192	1,189	1,273	1,293	1,598	1,397	8,983
9:00pm - 11:59pm	565	573	550	650	686	1,147	1,092	5,263
Total	6,688	10,687	10,739	11,259	11,368	13,697	9,623	74,061



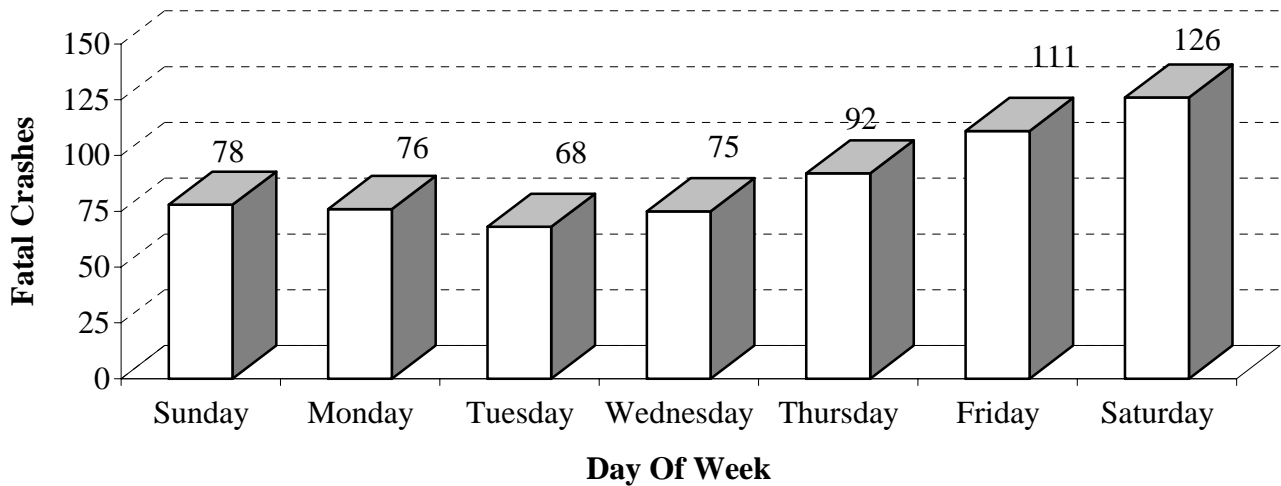
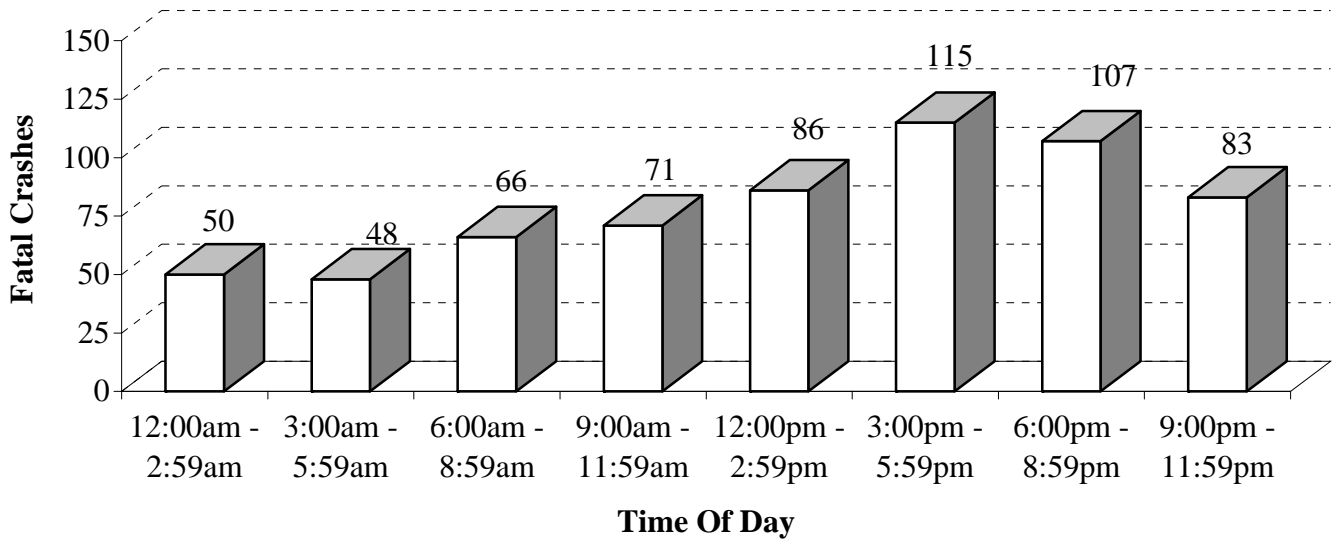
ALCOHOL/DRUG RELATED CRASHES BY TIME OF DAY AND DAY OF WEEK

Time of Day	Sunday	Monday	Tuesday	Wednesday	Thursday	Friday	Saturday	Total
12:00am - 2:59am	196	36	45	41	67	68	212	665
3:00am - 5:59am	114	18	18	18	23	41	107	339
6:00am - 8:59am	43	26	21	26	34	27	39	216
9:00am - 11:59am	32	33	38	30	35	44	41	253
12:00pm - 2:59pm	53	54	37	49	51	64	79	387
3:00pm - 5:59pm	94	99	102	86	90	117	128	716
6:00pm - 8:59pm	133	93	101	99	108	148	185	867
9:00pm - 11:59pm	87	91	79	95	112	177	209	850
Total	752	450	441	444	520	686	1,000	4,293



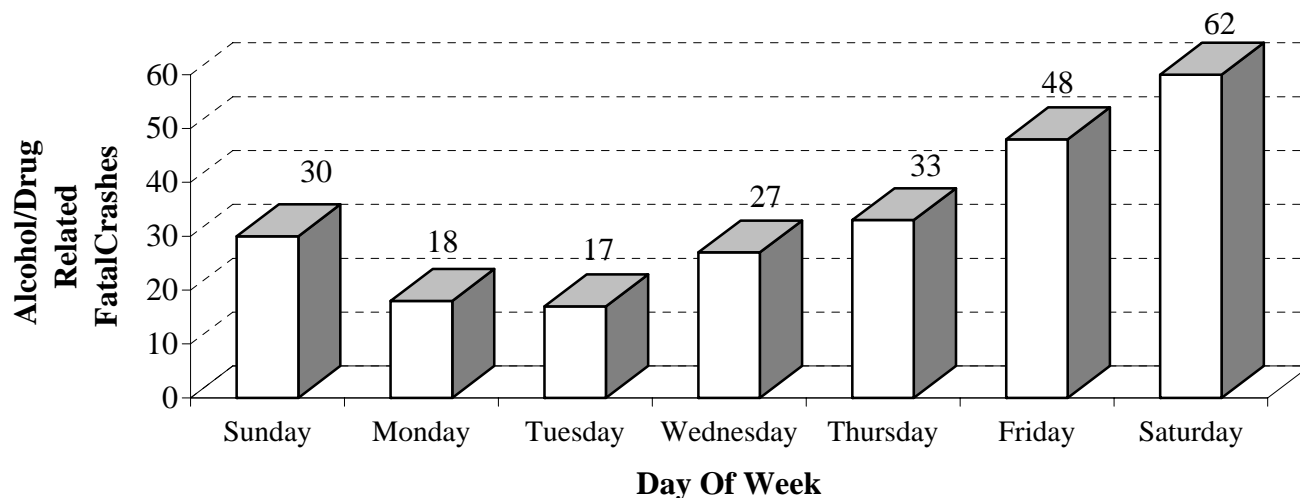
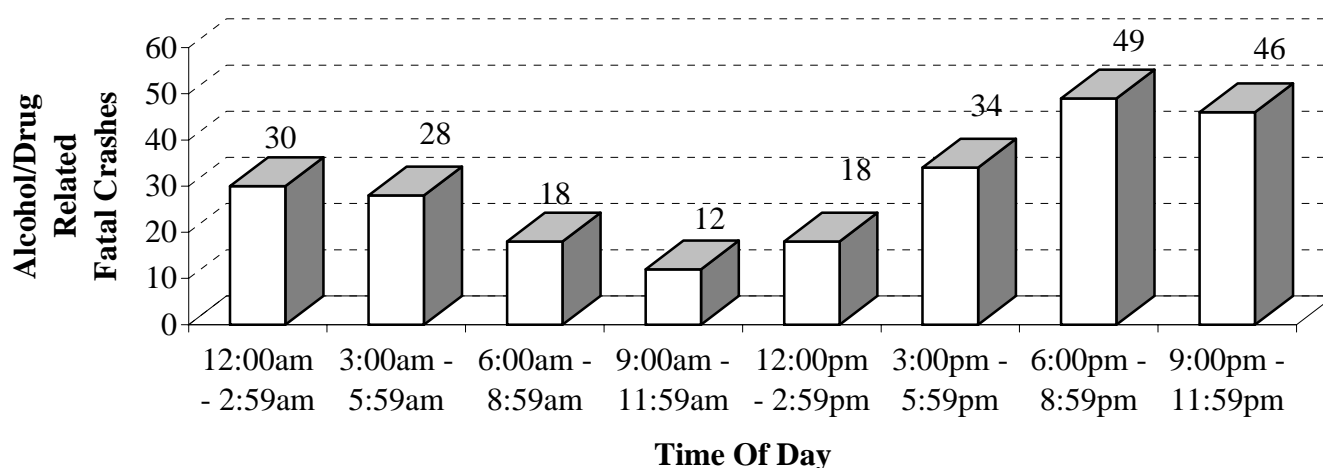
FATAL CRASHES BY TIME OF DAY AND DAY OF WEEK

Time of Day	Sunday	Monday	Tuesday	Wednesday	Thursday	Friday	Saturday	Total
12:00am - 2:59am	8	4	4	4	6	11	13	50
3:00am - 5:59am	14	4	2	2	4	8	14	48
6:00am - 8:59am	7	10	13	11	7	10	8	66
9:00am - 11:59am	9	8	5	10	10	16	13	71
12:00pm - 2:59pm	11	9	9	12	13	11	21	86
3:00pm - 5:59pm	9	21	19	11	19	18	18	115
6:00pm - 8:59pm	17	10	9	12	18	19	22	107
9:00pm - 11:59pm	3	10	7	13	15	18	17	83
Total	78	76	68	75	92	111	126	626



ALCOHOL/DRUG RELATED FATAL CRASHES BY TIME OF DAY AND DAY OF WEEK

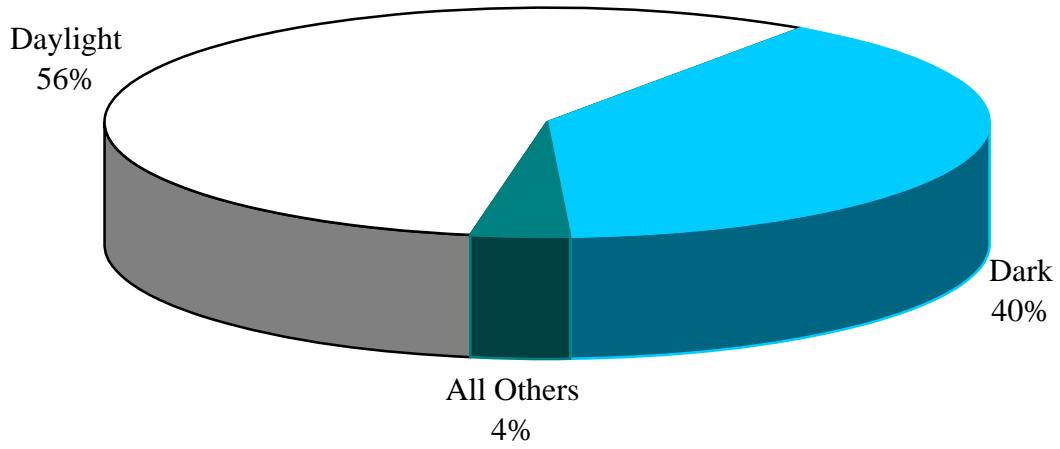
Time of Day	Sunday	Monday	Tuesday	Wednesday	Thursday	Friday	Saturday	Total
12:00am - 2:59am	5	1	2	3	4	7	8	30
3:00am - 5:59am	7	2	2	1	1	5	10	28
6:00am - 8:59am	3	2	2	2	3	3	3	18
9:00am - 11:59am	1	0	1	2	3	3	2	12
12:00pm - 2:59pm	2	1	0	2	3	5	5	18
3:00pm - 5:59pm	2	2	4	6	3	8	9	34
6:00pm - 8:59pm	8	5	4	3	9	8	12	49
9:00pm - 11:59pm	2	5	2	8	7	9	13	46
Total	30	18	17	27	33	48	62	235



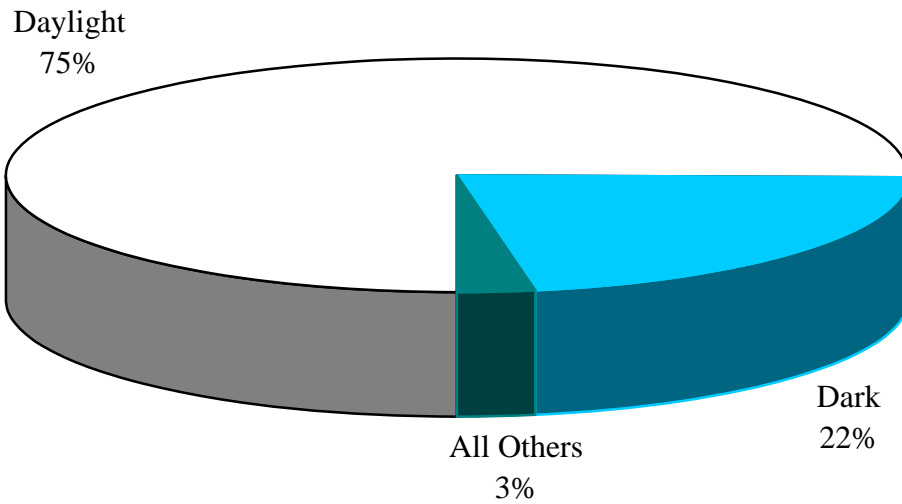
CRASHES BY LIGHTING CONDITIONS

Light Condition	Fatal Crashes	Total Crashes
Daylight	356	55,758
Dark	248	16,257
Other	21	1,880
Unknown	1	164
Total	626	74,059

Fatal Crashes

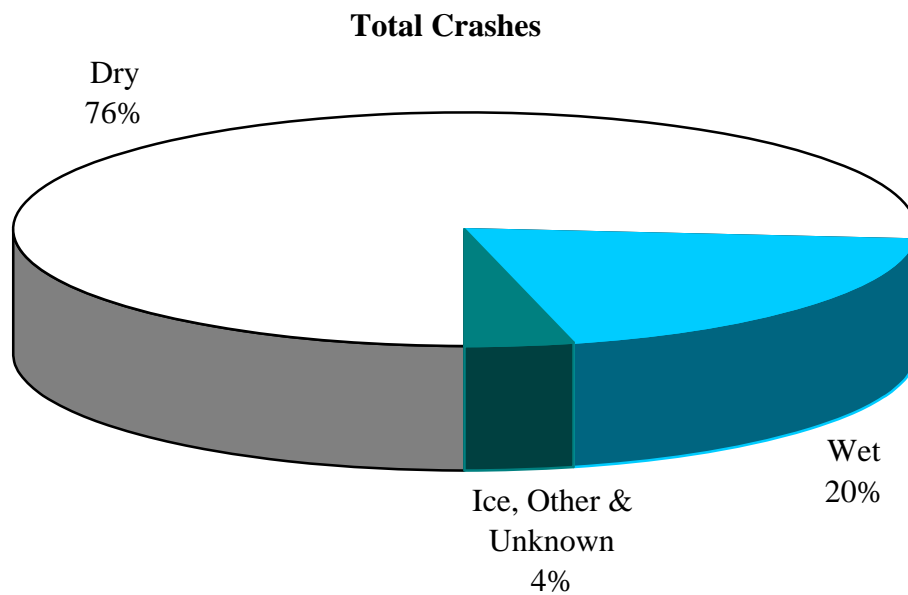
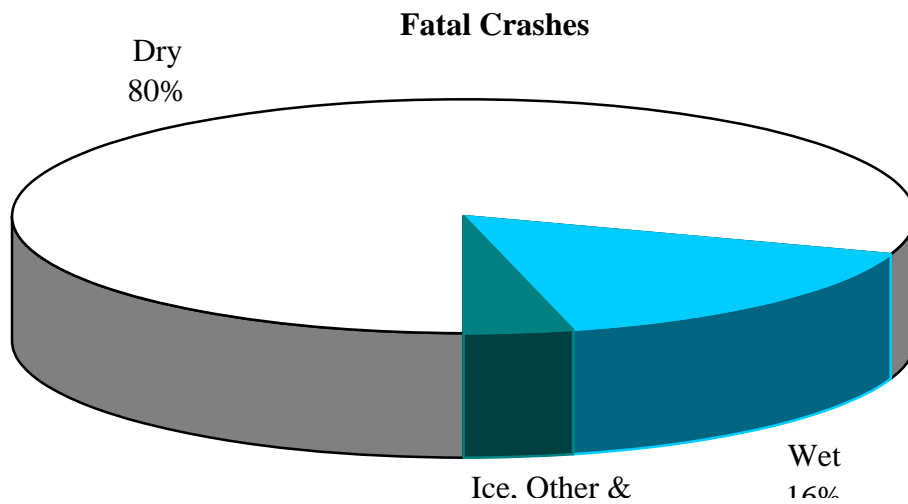


Total Crashes



CRASHES BY ROAD SURFACE CONDITIONS

Condition	Fatal Crashes	Total Crashes
Dry	502	56,471
Wet	100	14,800
Ice	15	1,996
Other	3	374
Unknown	6	418
Total	626	74,059

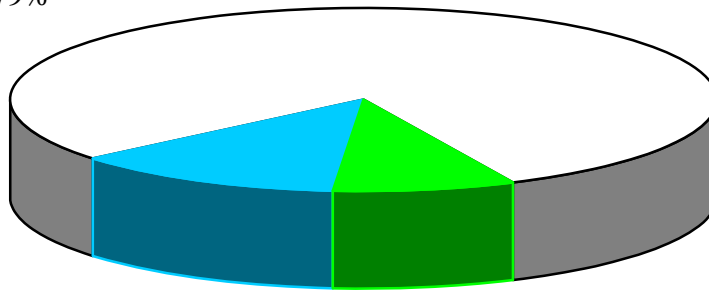


CRASHES BY ROAD SYSTEM

Road System	Fatal Crashes	Nonfatal Injury	P.D.O. * Crashes	Total Crashes
State Highway	495	21,223	25,019	46,737
County Road	79	2,864	1,619	4,562
City Street	52	8,854	13,854	22,760
Totals	626	32,941	40,492	74,059

Fatal Crashes

State Highway
79%

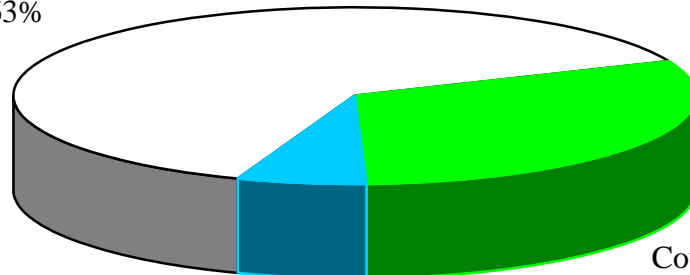


City Street
13%

County Road
8%

Total Crashes

State Highway
63%



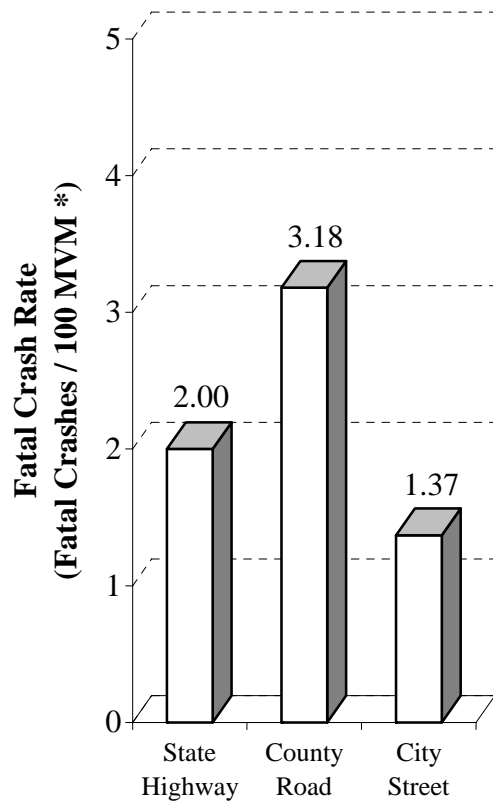
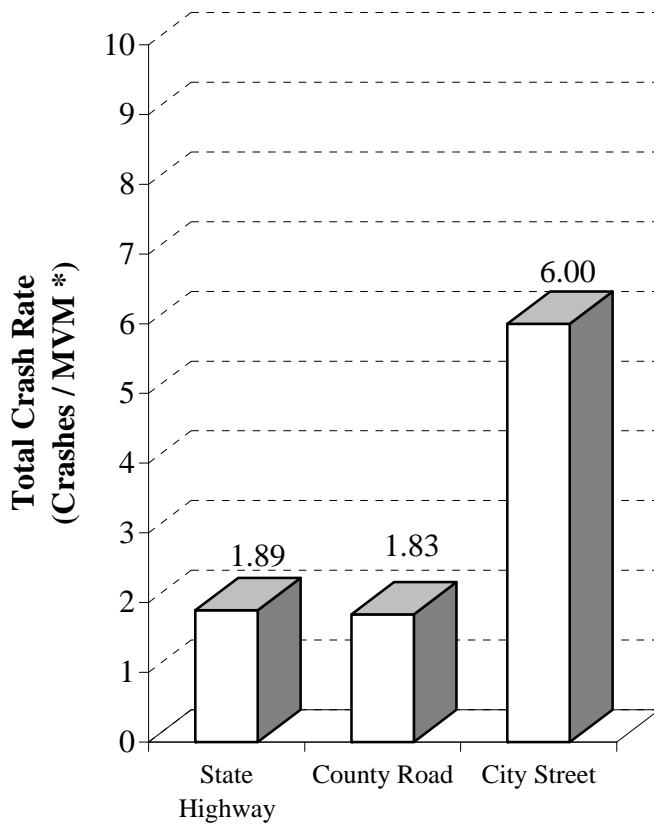
City Street
6%

County Road
31%

* Property Damage Only Crashes

CRASH RATES BY ROAD SYSTEM

Road System	Annual MVM*	Total Crashes	Crashes per MVM*	Fatal Crashes	Fatal Crashes per 100 MVM*
State Highway	24,689	46,737	1.89	495	2.00
County Road	2,486	4,535	1.83	79	3.18
City Street	3,800	22,787	6.00	52	1.37
Totals	30,975	74,059	2.39	626	2.02



Road System

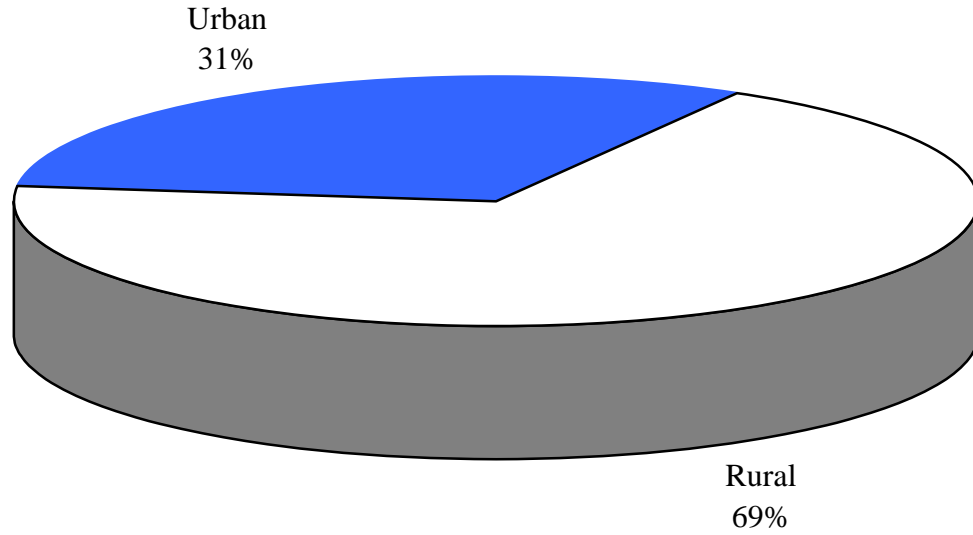
Road System

* Million vehicle miles

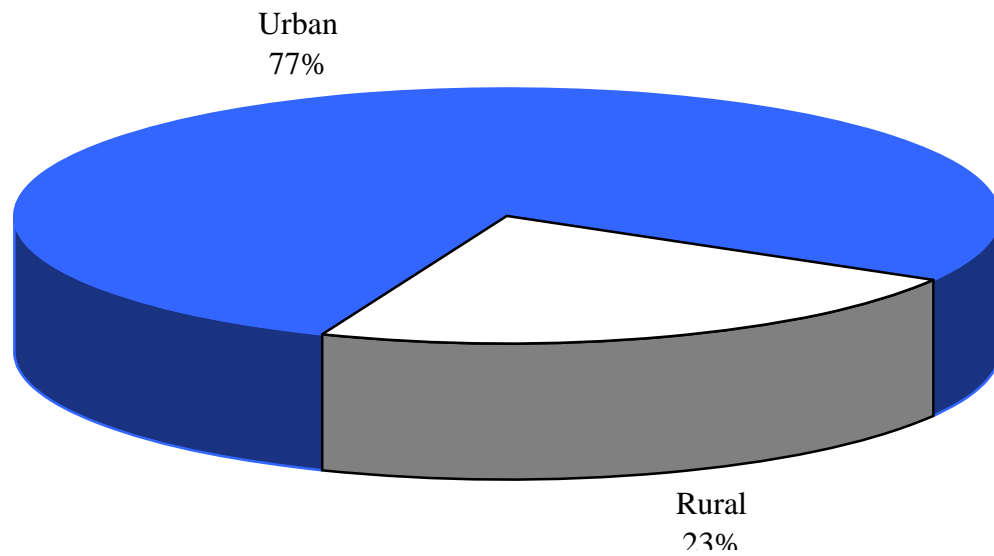
CRASHES BY RURAL/URBAN LOCATION

Location	Fatal Crashes	Total Crashes
Rural	430	16,790
Urban	196	57,269
Total	626	74,059

Fatal Crashes

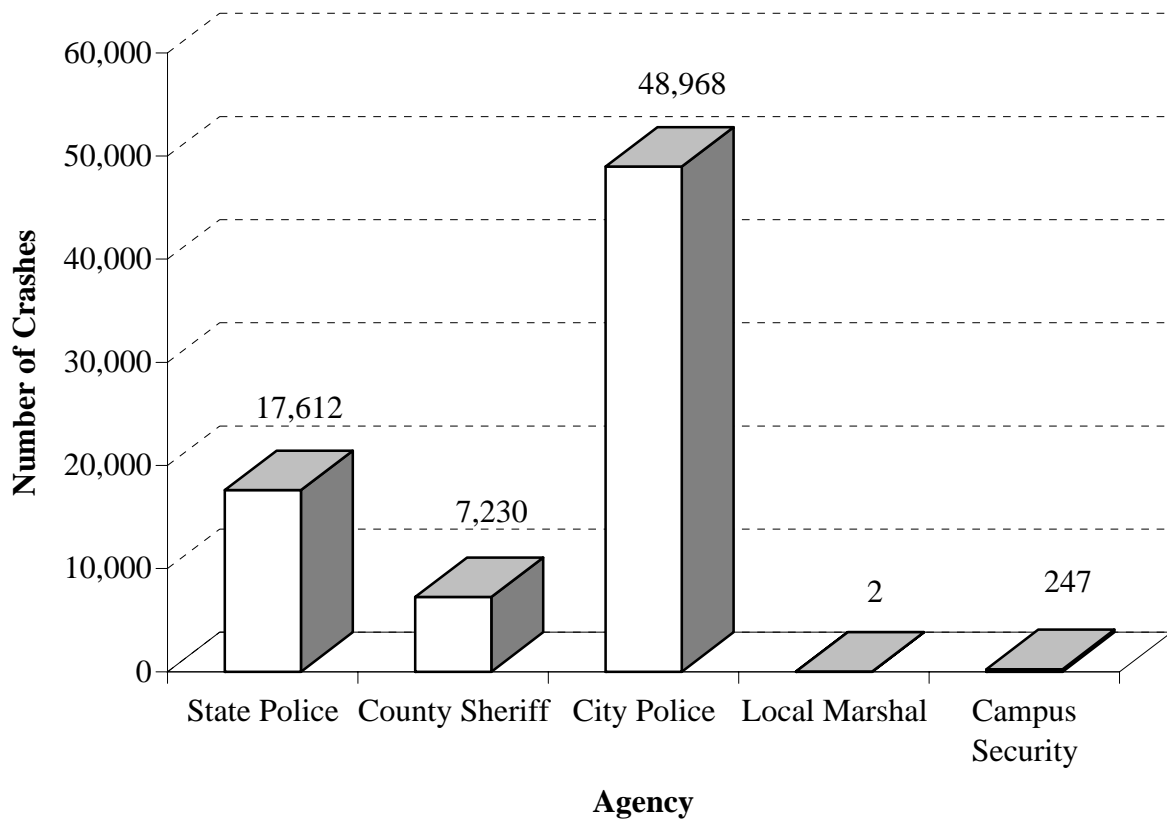


Total Crashes



CRASHES BY INVESTIGATING AGENCY

Agency	Total Crashes	% of Total
State Police	17,612	23.78%
County Sheriff	7,230	9.76%
City Police	48,968	66.12%
Local Marshal	2	0.00%
Campus Security	247	0.33%
Total	74,059	100.00%



CRASHES BY TYPE OF COLLISION

All Crashes						
Type Of Collision	Fatal Crashes	Fatalities	Injury Crashes	Injuries	P.D.O. *	Total Crashes
Angle	139	169	10,078	22,392	11,762	21,979
Backing (Rear to Rear)			477	1,072	1,130	1,607
Head On	87	118	834	2,168	435	1,356
Rear End	21	25	9,264	19,825	12,341	21,626
Sideswipe Opposite Direction	23	26	868	1,964	1,034	1,925
Sideswipe Same Direction	7	10	1,534	3,275	4,271	5,812
Single Vehicle Crash	349	373	9,886	13,635	9,519	19,754
Total	626	721	32,941	64,331	40,492	74,059

Alcohol and Other Drug Related Crashes						
Type Of Collision	Fatal Crashes	Fatalities	Injury Crashes	Injuries	P.D.O. *	Total Crashes
Angle	28	38	381	949	236	645
Backing (Rear to Rear)			9	20	15	24
Head On	36	52	102	327	18	156
Rear End	5	6	376	809	268	649
Sideswipe Opposite Direction	9	10	86	217	50	145
Sideswipe Same Direction	4	6	59	142	88	151
Single Vehicle Crash	153	160	1,546	2,141	824	2,523
Total	235	272	2,559	4,605	1,499	4,293

*Property Damage Only

VEHICLES INVOLVED BY FIRST HARMFUL EVENT

Harmful Event	Single Vehicle Crashes			Multi-Vehicle Crashes		
	Fatal Crashes	Injury Crashes	P.D.O.* Crashes	Fatal Crashes	Injury Crashes	P.D.O.* Crashes
Animal	2	96	76	0	1	1
Bank or Ledge	51	2,057	1,516	0	0	0
Bridge - Underpass	6	178	202	0	0	0
Fell from Vehicle	4	48	5	0	3	0
Fence or Fence Post	8	556	668	0	0	0
Fire	0	6	2	0	1	0
Guard Rail or Post	15	371	475	1	0	0
House - Building	5	94	109	0	0	0
Immersion	0	17	17	0	0	0
Impact Cushion Device	0	24	31	0	0	0
Motor Vehicle In Other Roadway	0	0	0	1	97	82
Motor Vehicle In Transport	0	0	0	602	48,874	63,643
Overtuned	67	1,544	679	0	3	0
Parked Vehicle	1	458	1,812	0	8	14
Pedalcycle	4	184	29	0	1	1
Pedestrian	38	388	17	3	21	0
Seizure/Blackout	0	12	3	0	2	1
Sign - Traffic Signal	10	407	659	0	0	0
Train	6	24	30	0	1	1
Tree(s)	101	1,722	1,106	0	1	0
Utility Pole	16	605	662	0	0	1
Other	1	51	68	0	7	6
Other Fixed Object	11	950	1,166	0	2	0
Other Non-Fixed Object	2	50	104	0	3	3
Unknown Fixed Object	0	8	9	0	2	0
Unknown	1	29	71	0	40	33
Total	349	9,879	9,516	607	49,067	63,786

*Property Damage Only

DRIVERS INVOLVED BY OPERATOR FACTOR

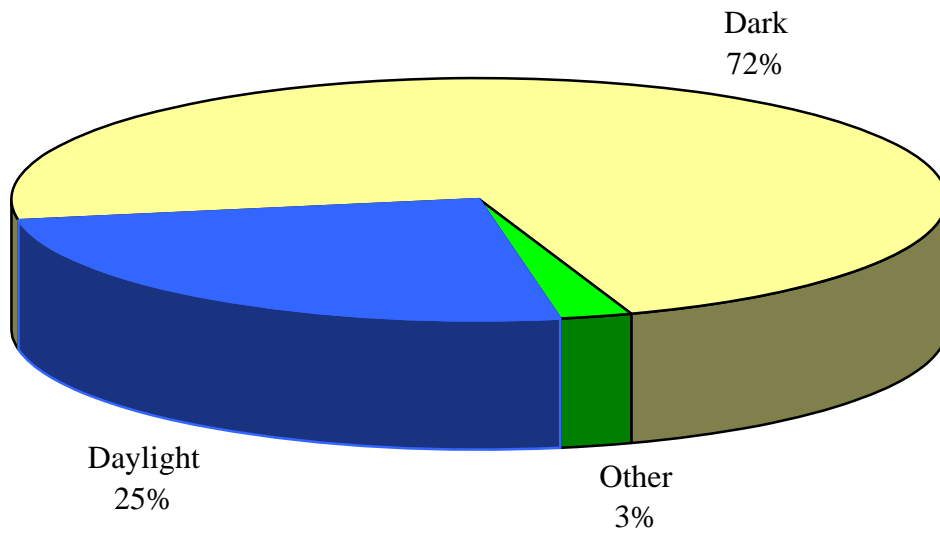
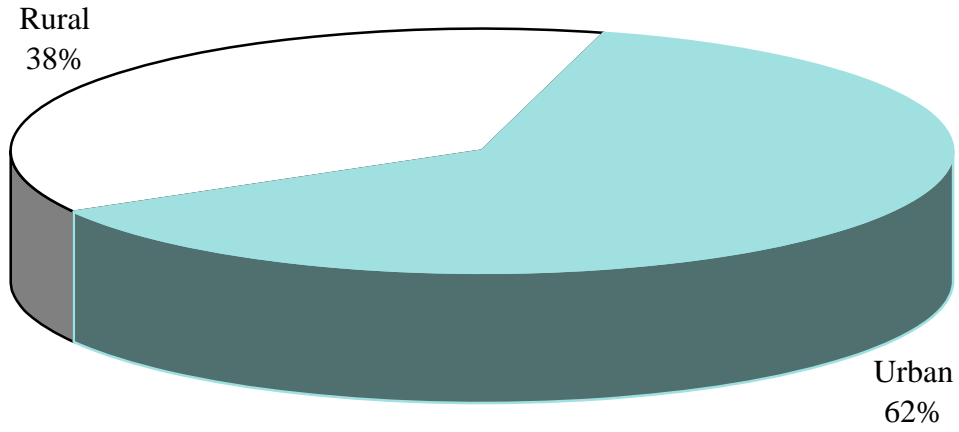
Operator Factor	Crash Severity					
	1	2	3	4	5	Total
None	330	1,343	6,141	17,434	31,146	56,394
Alcohol	29	133	423	342	551	1,478
Careless/Prohibited Driving	165	905	2,669	4,682	10,150	18,571
Crowded Off Roadway	0	12	64	87	208	371
Cutting In	0	0	10	41	83	134
Defective Brakes	0	15	55	134	201	405
Defective Lights	0	2	7	22	47	78
Disregarded Officer/Flagman	0	3	5	6	11	25
Disregarded Stop Sign	10	27	196	317	470	1,020
Disregarded Traffic Signal	4	27	247	514	743	1,535
Disregarded Yield Sign	0	0	6	25	15	46
Driving Without Lights	0	5	12	16	25	58
Drugs	3	16	34	47	45	145
Failure To Dim Headlights	0	0	2	11	11	24
Failure To Or Improper Signal	0	1	7	28	46	82
Failure To Yield	60	340	2,092	4,800	8,561	15,853
Following Too Close	8	171	711	3,494	6,037	10,421
Impeding Traffic	0	1	11	30	37	79
Improper Backing	0	4	29	429	1,320	1,782
Improper Lane Change	2	16	75	456	1,391	1,940
Improper Left Turn	3	16	95	311	561	986
Improper Passing	10	30	76	197	476	789
Improper Right Turn	0	4	29	173	391	597
Improperly Parked	0	4	13	37	96	150
Other Defective Equipment	1	4	7	15	34	61
Prohibited U Turn	0	0	0	0	3	3
Runaway Car/No Driver	94	298	995	1,446	2,636	5,469
Too Fast For Conditions	85	110	248	263	460	1,166
Wrong Side of Road	12	2	15	22	55	106
Wrong Way/One Way Traffic	6	20	88	114	306	534
Other Defective Equipment	46	221	826	1,667	3,009	5,769
Unknown	88	152	787	1,929	4,177	7,133
Total	956	3,882	15,975	39,089	73,302	133,204

DRIVERS INVOLVED IN ALCOHOL/DRUG RELATED CRASHES BY OPERATOR FACTOR

Operator Factor	Crash Severity					Total
	1	2	3	4	5	
None	92	149	376	549	671	1,837
Alcohol	29	133	423	342	551	1,478
Careless/Prohibited Driving	77	170	331	237	434	1,249
Crowded off Roadway	0	0	6	0	1	7
Cutting In	0	0	0	1	1	2
Defective Brakes	0	0	1	3	5	9
Defective Lights	0	0	1	0	1	2
Disregarded Officer/Flagman	0	0	1	1	1	3
Disregarded Stop Sign	4	5	15	10	21	55
Disregarded Traffic Signal	2	3	14	13	17	49
Disregarded Yield Sign	0	0	0	1	3	4
Driving Without Lights	0	2	0	1	0	3
Drugs	3	16	34	47	45	145
Failure to or Improper Signal	0	0	0	3	1	4
Failure to Yield	8	34	66	113	134	355
Following Too Close	0	12	28	73	95	208
Impeding Traffic	0	1	0	2	0	3
Improper Backing	0	0	0	6	14	20
Improper Lane Change	0	0	3	6	13	22
Improper Left Turn	2	2	4	10	6	24
Improper Passing	4	5	9	6	8	32
Improper Right Turn	0	2	0	2	11	15
Improperly Parked	0	0	2	1	1	4
Other	11	9	31	33	45	129
Other Defective Equipment	1	2	4	2	6	15
Prohibited U Turn	0	1	1	1	0	3
Too Fast For Conditions	39	36	102	50	56	283
Wrong Side of Road	32	29	40	18	24	143
Wrong Way/One Way Traffic	7	1	4	1	3	16
Unknown	23	17	37	24	40	141
Total	334	629	1,533	1,556	2,208	6,260

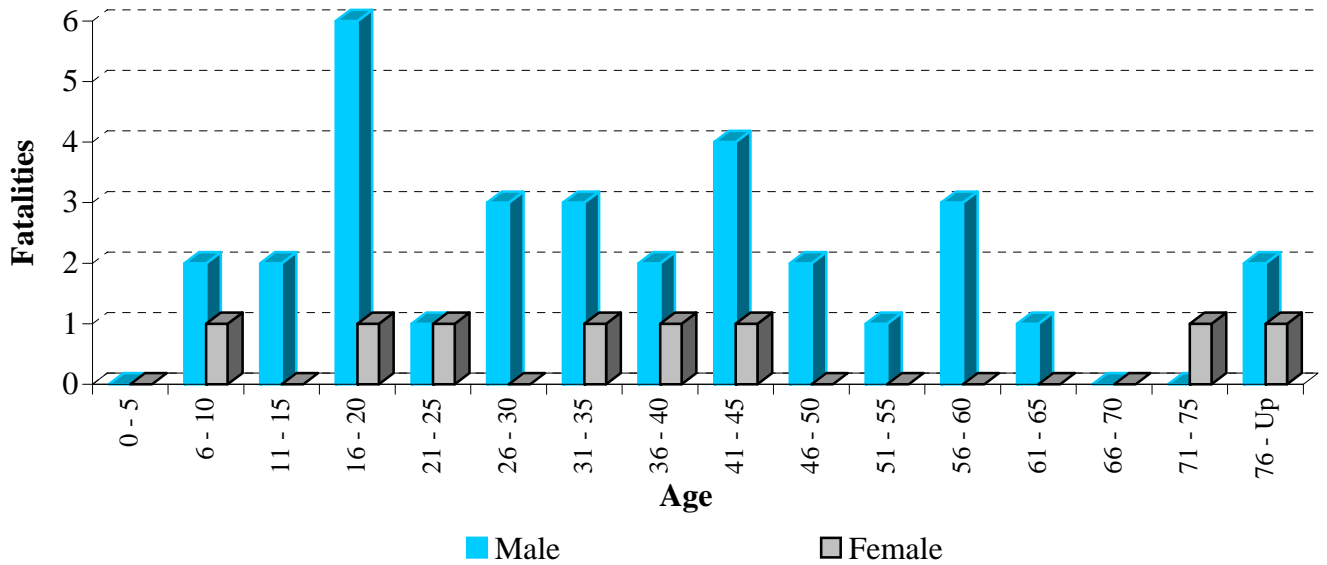
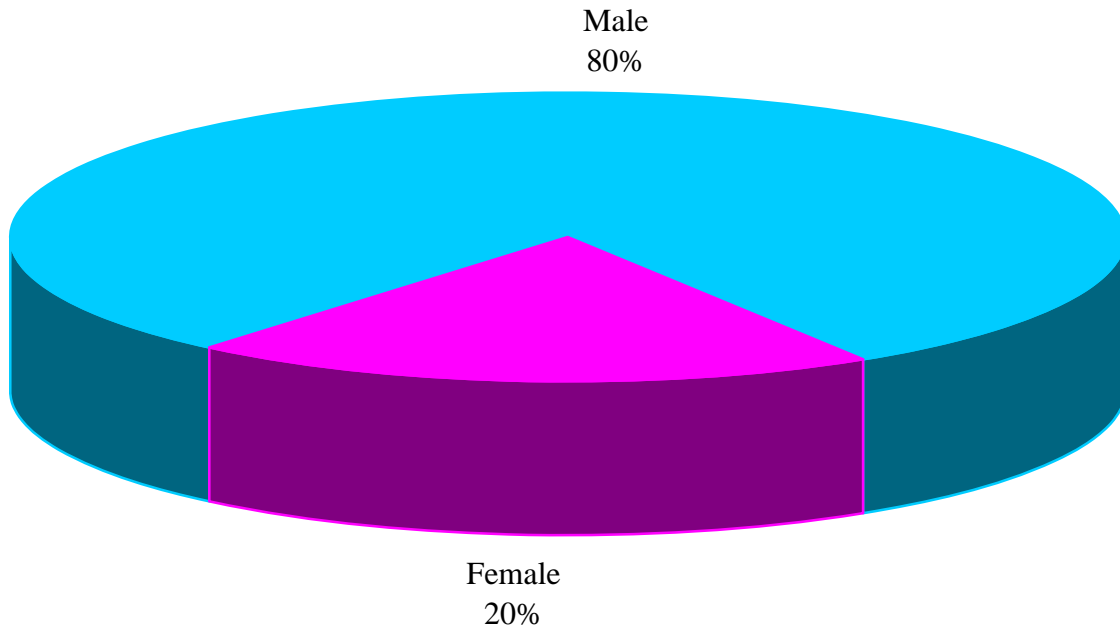
PEDESTRIAN FATALITIES

Rural	Urban	Daylight	Dark	Other
15	25	10	29	1



PEDESTRIAN FATALITIES (Cont.)

Male	Female	Total
32	8	40



ARKANSAS' 20 LARGEST CITIES BY POPULATION CRASHES, FATALITIES AND INJURIES

City	Fatal Crashes	Fatalities	Injury Crashes	Injuries	P.D.O. * Crashes	Total Crashes
Little Rock	22	27	3,230	5,958	4,640	7,892
Fort Smith	6	6	1,418	2,672	2,511	3,935
North Little Rock	9	11	1,263	2,118	2,730	4,002
Fayetteville	14	15	1,063	1,963	2,248	3,325
Jonesboro	8	8	902	1,817	1,648	2,558
Pine Bluff	7	7	1,272	2,861	946	2,225
Springdale	3	3	457	713	1,768	2,228
Conway	2	3	834	1,815	891	1,727
Rogers	8	8	522	1,009	795	1,325
Hot Springs	6	8	649	963	1,960	2,615
Jacksonville	3	4	459	937	529	991
West Memphis	6	7	292	562	692	990
Texarkana	7	7	384	875	487	878
Russellville	0	0	323	514	799	1,122
Paragould	4	4	513	1,184	455	972
Benton	3	3	294	512	461	758
El Dorado	3	3	467	1,032	526	996
Sherwood	5	5	236	398	290	531
Bentonville	2	2	430	805	959	1,391
Van Buren	1	1	383	896	293	677

* Property Damage Only

ARKANSAS' 20 LARGEST CITIES BY POPULATION ALCOHOL AND OTHER DRUG RELATED CRASHES, FATALITIES AND INJURIES

City	Fatal Crashes	Fatalities	Injury Crashes	Injuries	P.D.O. * Crashes	Total Crashes
Little Rock	11	14	174	300	133	632
Fort Smith	4	4	81	134	106	329
North Little Rock	4	6	59	93	84	246
Fayetteville	7	7	118	200	96	428
Jonesboro	2	2	39	58	41	142
Pine Bluff	2	2	54	124	21	203
Springdale	1	1	41	58	96	197
Conway	1	1	44	81	16	143
Rogers	2	2	38	69	29	140
Hot Springs	2	3	31	41	45	124
Jacksonville	1	2	17	37	11	68
West Memphis	2	3	24	53	38	120
Texarkana	3	3	27	65	22	120
Russellville	0	0	20	33	16	69
Paragould	2	2	29	55	18	106
Benton	2	2	21	32	9	66
El Dorado	1	1	21	33	18	74
Sherwood	1	1	20	49	12	83
Bentonville	2	2	14	18	11	47
Van Buren	0	0	23	43	13	79

* Property Damage Only

TOTAL CRASHES, FATALITIES AND INJURIES BY COUNTY

County	Fatal Crashes	Fatalities	Injury Crashes	Injuries	P.D.O. Crashes	Total Crashes
ARKANSAS	3	4	327	726	153	483
ASHLEY	8	10	268	589	293	569
BAXTER	7	9	319	538	450	776
BENTON	28	29	1,990	3,880	2,616	4,634
BOONE	7	8	372	736	479	858
BRADLEY	4	4	92	200	44	140
CALHOUN	1	1	72	126	29	102
CARROLL	6	8	372	780	216	594
CHICOT	3	3	102	239	68	173
CLARK	9	10	199	337	310	518
CLAY	7	8	188	387	94	289
CLEBURNE	5	7	257	471	214	476
CLEVELAND	4	4	46	77	64	114
COLUMBIA	10	12	187	463	164	361
CONWAY	5	5	160	314	172	337
CRAIGHEAD	17	18	1,106	2,180	1,831	2,954
CRAWFORD	6	6	726	1,572	564	1,296
CRITTENDEN	15	31	546	1,180	922	1,483
CROSS	7	7	191	433	124	322
DALLAS	1	1	121	261	64	186
DESHA	4	4	151	330	74	229
DREW	6	6	241	523	122	369
FAULKNER	12	16	1,086	2,310	1,134	2,232
FRANKLIN	7	7	121	229	128	256
FULTON	2	2	75	120	52	129
GARLAND	20	24	1,311	2,265	2,426	3,757
GRANT	2	3	125	244	118	245
GREENE	9	9	539	1,247	481	1,029
HEMPSTEAD	4	5	267	442	366	637
HOT SPRING	14	14	452	885	296	762
HOWARD	2	2	125	261	106	233
INDEPENDENCE	14	14	453	881	639	1,106
IZARD	2	2	32	55	10	44
JACKSON	6	7	97	162	80	183
JEFFERSON	19	20	1,552	3,366	1,231	2,802
JOHNSON	7	10	242	456	260	509
LAFAYETTE	3	3	66	138	24	93
LAWRENCE	8	10	151	339	107	266

TOTAL CRASHES, FATALITIES AND INJURIES BY COUNTY (CONT.)

County	Fatal Crashes	Fatalities	Injury Crashes	Injuries	P.D.O. Crashes	Total Crashes
LEE	3	3	92	182	59	154
LINCOLN	3	3	65	98	36	104
LITTLE RIVER	5	5	61	106	97	163
LOGAN	7	7	135	239	134	276
LONOKE	23	28	642	1,154	917	1,582
MADISON	7	7	109	189	102	218
MARION	1	1	84	161	50	135
MILLER	13	14	452	992	562	1,027
MISSISSIPPI	10	15	487	1,000	546	1,043
MONROE	10	13	38	86	41	89
MONTGOMERY	3	3	112	213	43	158
NEVADA	3	3	67	112	43	113
NEWTON	2	2	71	102	54	127
OUACHITA	7	9	92	169	73	172
PERRY	3	3	49	68	32	84
PHILLIPS	3	3	263	665	117	383
PIKE	4	4	49	85	31	84
POINSETT	11	13	256	528	245	512
POLK	5	6	139	281	111	255
POPE	11	12	590	1,038	968	1,569
PRAIRIE	1	1	76	118	82	159
PULASKI	56	66	5,952	10,727	8,944	14,952
RANDOLPH	1	1	218	433	146	365
SALINE	22	24	1,106	2,124	1,197	2,325
SCOTT	4	5	129	259	83	216
SEARCY	3	4	80	136	45	128
SEBASTIAN	9	9	1,797	3,448	2,733	4,539
SEVIER	7	10	209	480	115	331
SHARP	8	8	162	304	90	260
ST. FRANCIS	8	8	340	766	278	626
STONE	5	6	159	291	109	273
UNION	13	13	616	1,311	603	1,232
VAN BUREN	8	8	116	263	63	187
WASHINGTON	32	34	2,144	3,814	4,410	6,586
WHITE	16	18	1,027	2,227	633	1,676
WOODRUFF	3	6	17	30	14	34
YELL	2	3	213	390	161	376
TOTALS	626	721	32,941	64,331	40,492	74,059

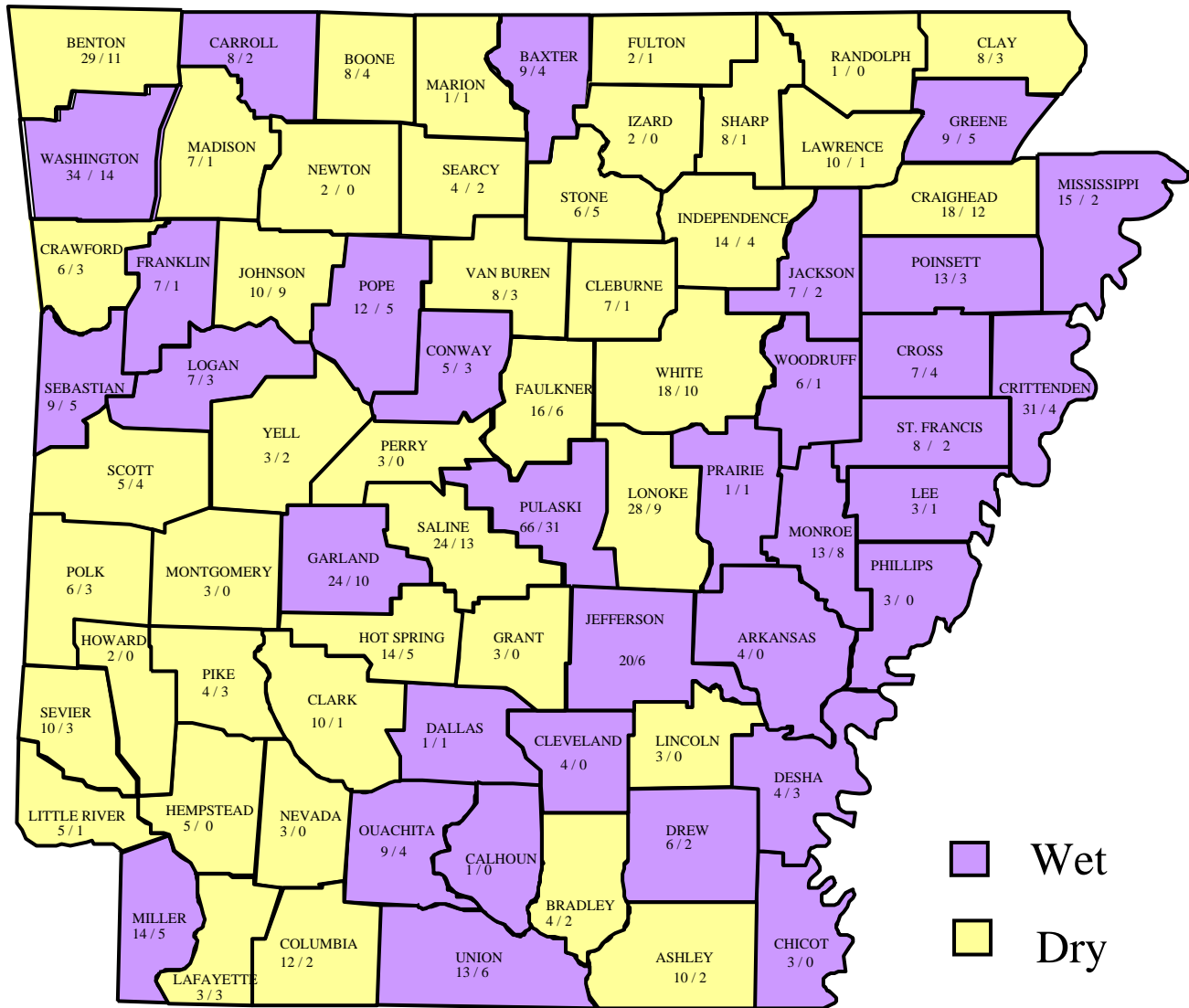
ALCOHOL/DRUG RELATED CRASHES, FATALITIES AND INJURIES BY COUNTY

County	Fatal Crashes	Fatalities	Injury Crashes	Injuries	P.D.O. Crashes	Total Crashes
ARKANSAS	0	0	20	47	7	27
ASHLEY	2	2	24	42	22	48
BAXTER	3	4	36	51	18	57
BENTON	10	11	146	262	74	230
BOONE	4	4	27	47	23	54
BRADLEY	2	2	8	12	5	15
CALHOUN	0	0	3	6	3	6
CARROLL	2	2	52	81	15	69
CHICOT	0	0	8	21	2	10
CLARK	1	1	19	33	5	25
CLAY	3	3	19	39	2	24
CLEBURNE	1	1	32	52	11	44
CLEVELAND	0	0	9	19	5	14
COLUMBIA	2	2	8	44	5	15
CONWAY	3	3	14	24	5	22
CRAIGHEAD	11	12	55	95	48	114
CRAWFORD	3	3	58	111	20	81
CRITTENDEN	3	4	42	86	43	88
CROSS	4	4	13	33	7	24
DALLAS	1	1	10	24	10	21
DESHA	3	3	15	37	4	22
DREW	2	2	20	34	2	24
FAULKNER	3	6	70	131	30	103
FRANKLIN	1	1	8	13	8	17
FULTON	1	1	11	18	12	24
GARLAND	9	10	125	218	80	214
GRANT	0	0	5	13	1	6
GREENE	5	5	37	81	20	62
HEMPSTEAD	0	0	27	40	12	39
HOT SPRING	5	5	34	62	7	46
HOWARD	0	0	10	15	6	16
INDEPENDENCE	4	4	39	57	13	56
IZARD	0	0	8	14	1	9
JACKSON	2	2	14	22	5	21
JEFFERSON	6	6	85	169	44	135
JOHNSON	6	9	29	58	13	48
LAFAYETTE	3	3	6	15	1	10
LAWRENCE	1	1	4	8	4	9

ALCOHOL/DRUG RELATED CRASHES, FATALITIES AND INJURIES BY COUNTY (CONT.)

County	Fatal Crashes	Fatalities	Injury Crashes	Injuries	P.D.O. Crashes	Total Crashes
LEE	1	1	7	14	0	8
LINCOLN	0	0	5	6	3	8
LITTLE RIVER	1	1	9	16	5	15
LOGAN	3	3	18	33	9	30
LONOKE	7	9	63	114	35	105
MADISON	1	1	26	39	5	32
MARION	1	1	13	22	1	15
MILLER	5	5	39	80	24	68
MISSISSIPPI	2	2	42	76	17	61
MONROE	5	8	4	14	1	10
MONTGOMERY	0	0	13	27	2	15
NEVADA	0	0	11	16	1	12
NEWTON	0	0	7	8	6	13
OUACHITA	3	4	16	23	3	22
PERRY	0	0	7	9	5	12
PHILLIPS	0	0	18	40	2	20
PIKE	3	3	3	4	0	6
POINSETT	2	3	18	42	11	31
POLK	2	3	9	15	7	18
POPE	5	5	48	79	24	77
PRAIRIE	1	1	5	11	4	10
PULASKI	25	31	367	631	274	666
RANDOLPH	0	0	24	47	9	33
SALINE	11	13	75	122	41	127
SCOTT	3	4	8	15	3	14
SEARCY	1	2	13	19	2	16
SEBASTIAN	5	5	110	192	114	229
SEVIER	3	3	18	30	5	26
SHARP	1	1	20	29	4	25
ST. FRANCIS	2	2	12	23	7	21
STONE	4	5	20	33	9	33
UNION	6	6	38	68	22	66
VAN BUREN	3	3	5	8	4	12
WASHINGTON	13	14	230	382	218	461
WHITE	8	10	63	127	20	91
WOODRUFF	1	1	2	2	0	3
YELL	1	2	23	54	9	33
Totals	235	269	2,559	4,604	1,499	4,293

TOTAL FATALITIES VS. ALCOHOL/DRUG RELATED FATALITIES BY COUNTY



County	Number of Counties	Total Fatalities	Alcohol/Drug Related Fatalities	% Alcohol/Drug Related
Wet	32	364	133	37%
Dry	43	357	136	38%