

ARKANSAS

2005

TRAFFIC CRASH STATISTICS



Prepared by:

Arkansas State Police
Highway Safety Office
1 State Police Plaza Drive
Little Rock, AR 72209
www.asp.arkansas.gov

TABLE OF CONTENTS

INTRODUCTION

2005 ARKANSAS CRASH SUMMARY.....	2
----------------------------------	---

FIVE AND TEN YEAR TRENDS

FATAL CRASHES AND RATES.....	3
FATALITIES AND RATES.....	4
FATALITIES BY AGE GROUP, 2001-2005.....	5
NONFATAL INJURIES, RATES AND INJURIES BY SEVERITY.....	6 - 7
TOTAL CRASHES AND RATES.....	8
ALCOHOL/DRUG RELATED FATALITIES VS. TOTAL FATALITIES.....	9
PERCENT ALCOHOL/DRUG RELATED FATALITIES ARKANSAS VS. NATIONAL.....	10
ALCOHOL/DRUG RELATED CRASHES VS. TOTAL CRASHES.....	11
ALCOHOL/DRUG RELATED FATAL CRASHES VS. TOTAL FATAL CRASHES.....	12
MOTORCYCLE CRASHES.....	13
RAILROAD CRASHES, FATALITIES AND INJURIES.....	14

CURRENT YEAR (2005)

FATALITIES BY SAFETY RESTRAINT USAGE	
PERCENT USED AND NOT USED.....	15
FATALITIES BY SAFETY RESTRAINT USAGE BY AGE GROUP.....	16
FATALITIES BY SAFETY RESTRAINT USAGE BY AGE.....	17
FATALITIES BY AGE AND PERSON TYPE.....	18
ALCOHOL/DRUG RELATED FATALITIES BY AGE AND PERSON TYPE.....	19
FATAL CRASHES AND FATALITIES BY MONTH.....	20
CRASHES BY TIME OF DAY AND DAY OF WEEK.....	21
ALCOHOL/DRUG RELATED CRASHES BY TIME OF DAY AND	
DAY OF WEEK.....	22
FATAL CRASHES BY TIME OF DAY AND DAY OF WEEK.....	23
ALCOHOL/DRUG RELATED FATAL CRASHES BY TIME OF DAY AND	
DAY OF WEEK.....	24
CRASHES BY LIGHTING CONDITIONS.....	25
CRASHES BY ROAD SURFACE CONDITIONS.....	26
CRASHES BY ROAD SYSTEM.....	27
CRASH RATES BY ROAD SYSTEM.....	28
CRASHES BY RURAL/URBAN LOCATION.....	29
CRASHES BY INVESTIGATING AGENCY.....	30
CRASHES BY TYPE OF COLLISION	31
VEHICLES INVOLVED BY FIRST HARMFUL EVENT	32
DRIVERS BY OPERATOR FACTOR	33
DRIVERS IN ALCOHOL/DRUG RELATED CRASHES BY OPERATOR FACTOR	34
PEDESTRIAN FATALITIES.....	35 - 36
ARKANSAS' 20 LARGEST CITIES BY POPULATION -	
CRASHES, FATALITIES AND INJURIES.....	37
ARKANSAS' 20 LARGEST CITIES BY POPULATION -	
ALCOHOL & OTHER DRUG RELATED CRASHES, FATALITIES AND INJURIES.....	38
COUNTY BREAKDOWNS	
TOTAL CRASHES, FATALITIES AND INJURIES BY COUNTY.....	39 - 40
ALCOHOL/DRUG RELATED	
CRASHES, FATALITIES AND INJURIES BY COUNTY.....	41 - 42
FATALITIES VS. ALCOHOL/DRUG RELATED FATALITIES BY COUNTY.....	43

2005 ARKANSAS CRASH SUMMARY

- **On all public roads in Arkansas during 2005 there were:**

69,515 total crashes reported, a 6.1% decrease from 2004

596 fatal crashes reported, a 4.8% decrease from 2004

654 fatalities reported, a 9.3% decrease from 2004

247 alcohol/drug related fatalities, an 8.2% decrease from 2004

31.2 billion vehicle miles traveled, a 0.8 % increase from 2004

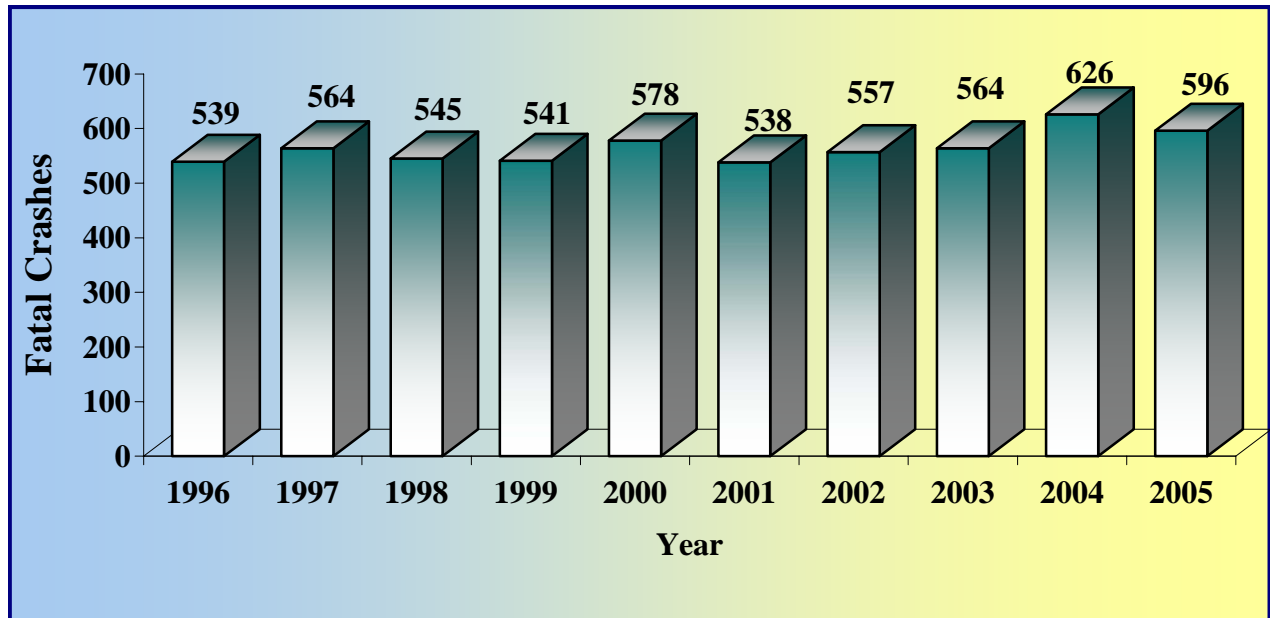
- **The fatality rate decreased from 2.3 in 2004 to 2.1 fatalities per 100 MVM* traveled.**
- **The fatal crash rate decreased from 2.0 fatal crashes in 2004 to 1.9 per 100 MVM* traveled.**

* Million vehicle miles

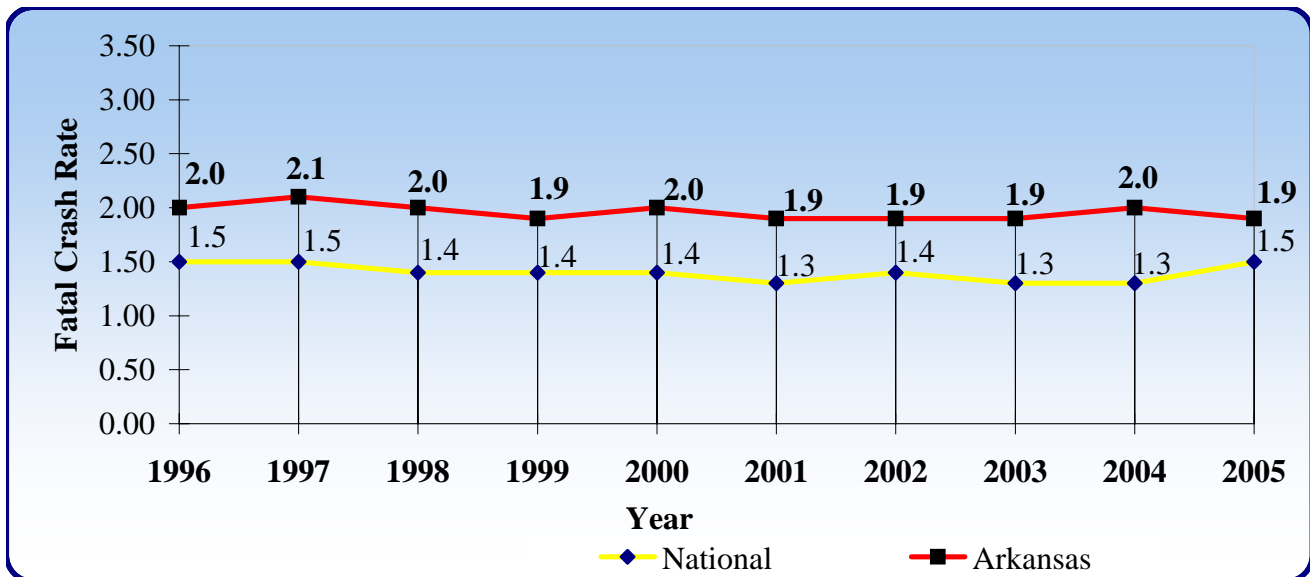
FATAL CRASHES AND RATES

10 YEAR TRENDS

STATEWIDE FATAL CRASHES



FATAL CRASH RATE (FATAL CRASHES PER 100 MVM*)

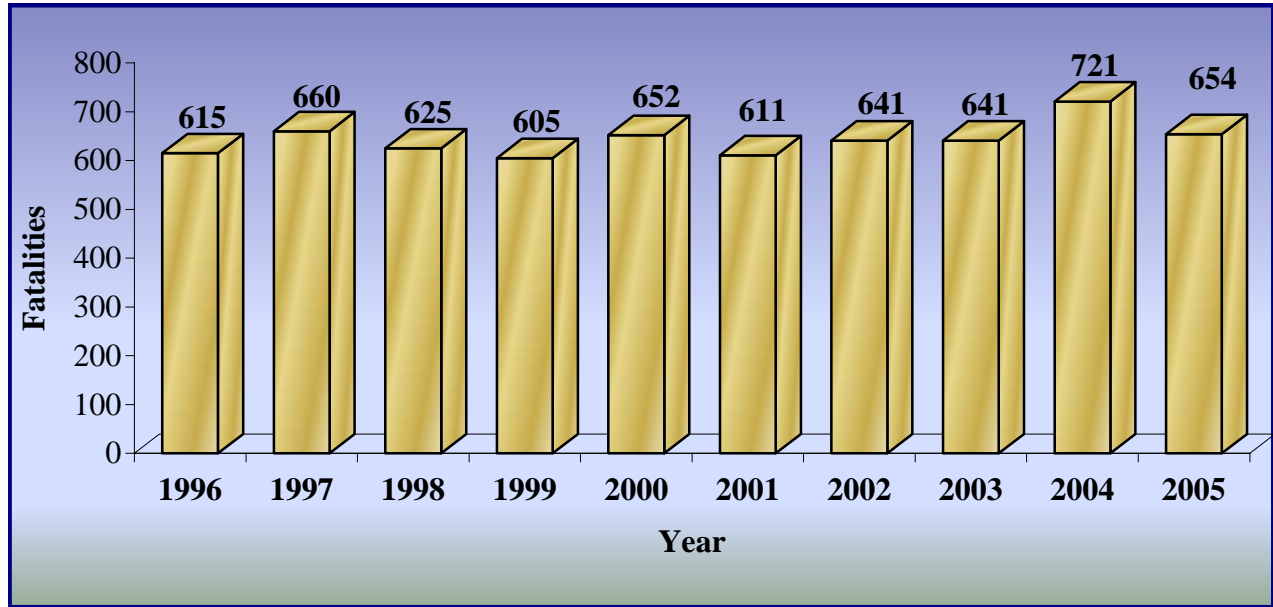


* Million vehicle miles

FATALITIES AND RATES

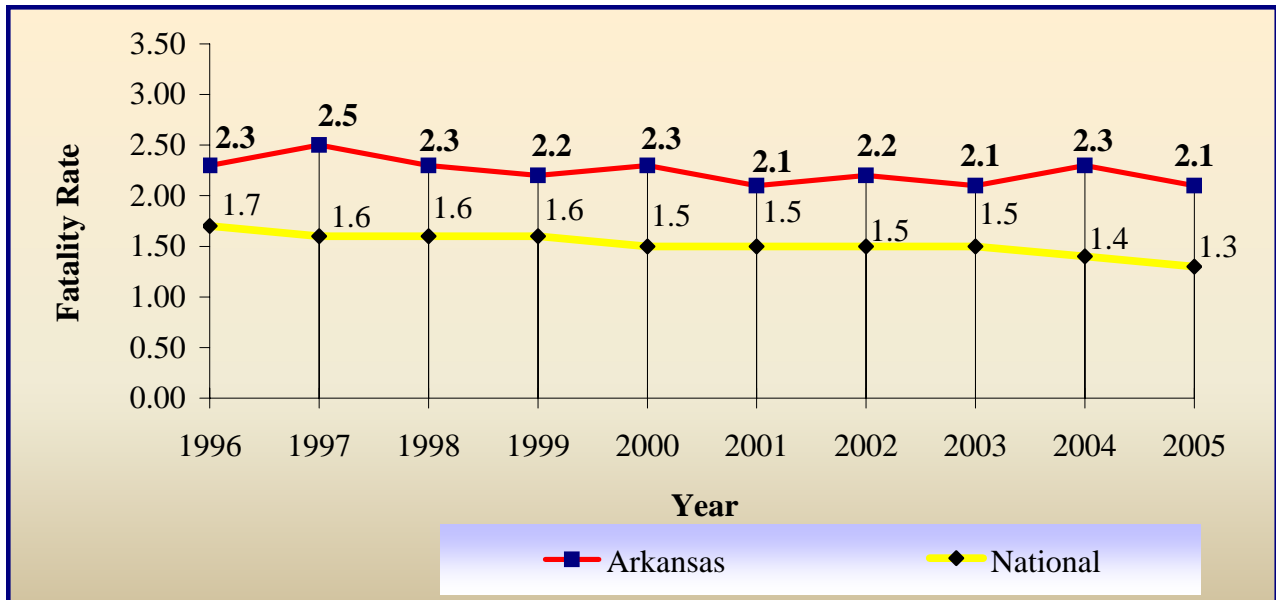
10 YEAR TRENDS

STATEWIDE FATALITIES



FATALITY RATE (FATALITIES PER 100 MVM*)

ARKANSAS FATALITY RATE (FATALITIES PER 100 MVM*)

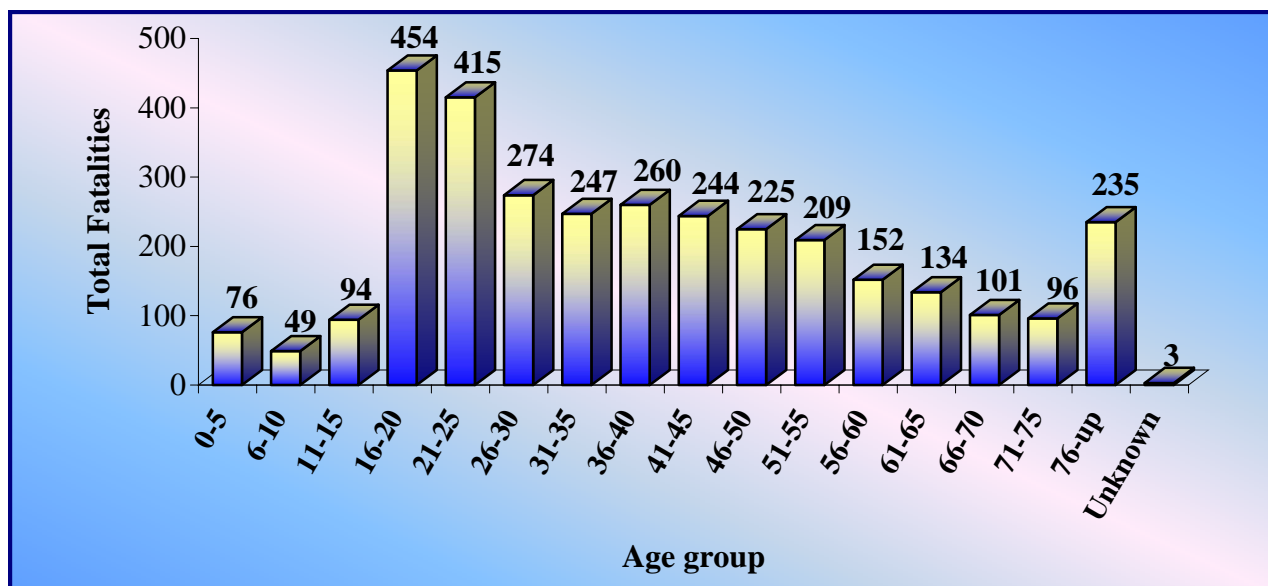


* Million vehicle miles

FATALITIES BY AGE GROUP, 2001-2005

5 YEAR TRENDS

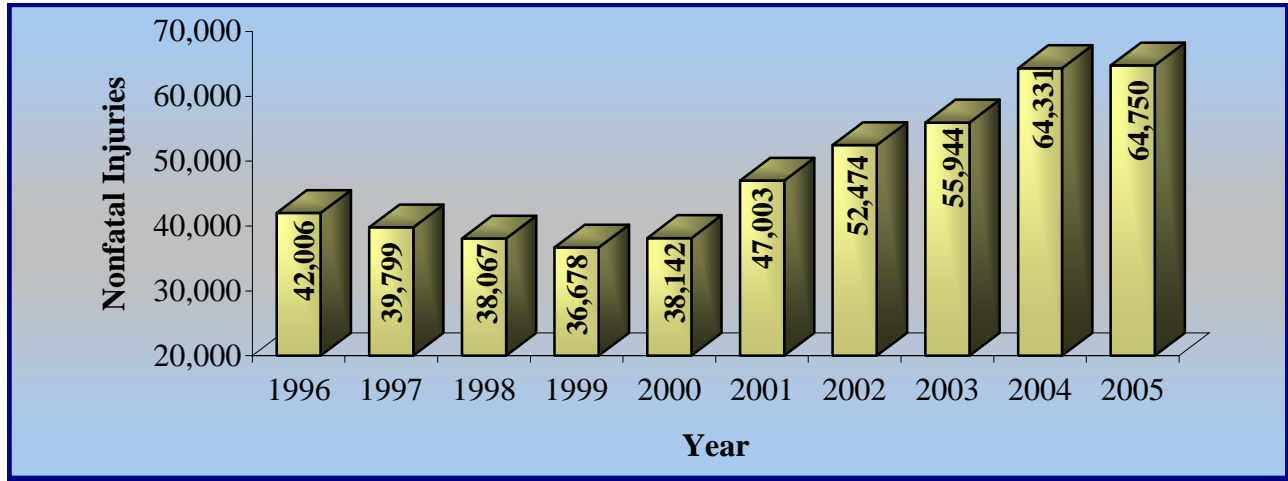
Age Group	2001	2002	2003	2004	2005	Total Fatalities
0-5	22	14	17	13	10	76
6-10	10	6	11	17	5	49
11-15	21	19	18	21	15	94
16-20	99	91	77	101	86	454
21-25	70	85	86	87	87	415
26-30	48	63	47	65	51	274
31-35	48	50	44	51	54	247
36-40	56	57	56	50	41	260
41-45	32	46	59	63	44	244
46-50	36	40	41	66	42	225
51-55	43	36	46	42	42	209
56-60	26	22	35	29	40	152
61-65	22	30	28	21	33	134
66-70	16	14	19	22	30	101
71-75	15	29	11	18	23	96
76-up	47	39	46	54	49	235
Unknown	0	0	0	1	2	3
Total	611	641	641	721	654	3,268



NONFATAL INJURIES AND RATES

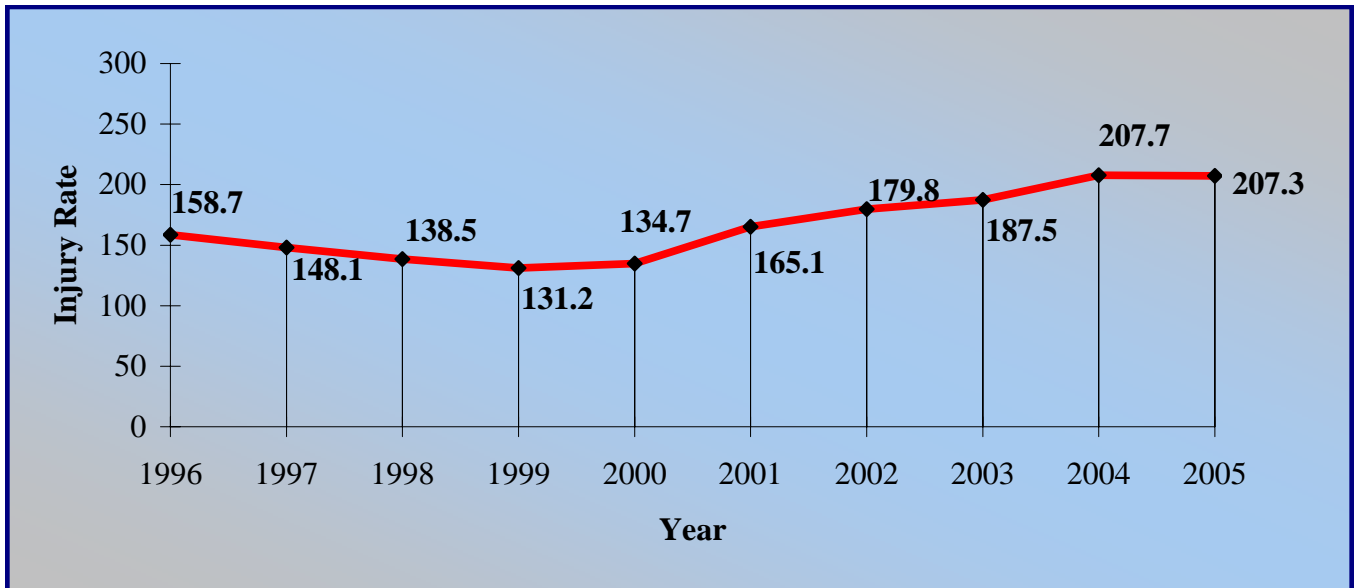
10 YEAR TRENDS

STATEWIDE NONFATAL INJURIES



Note: The greatest increase in total number of nonfatal injuries in 2001 thru 2005 is due to an increase in police reported possible injuries.

INJURY RATE (INJURIES PER 100 MVM*)

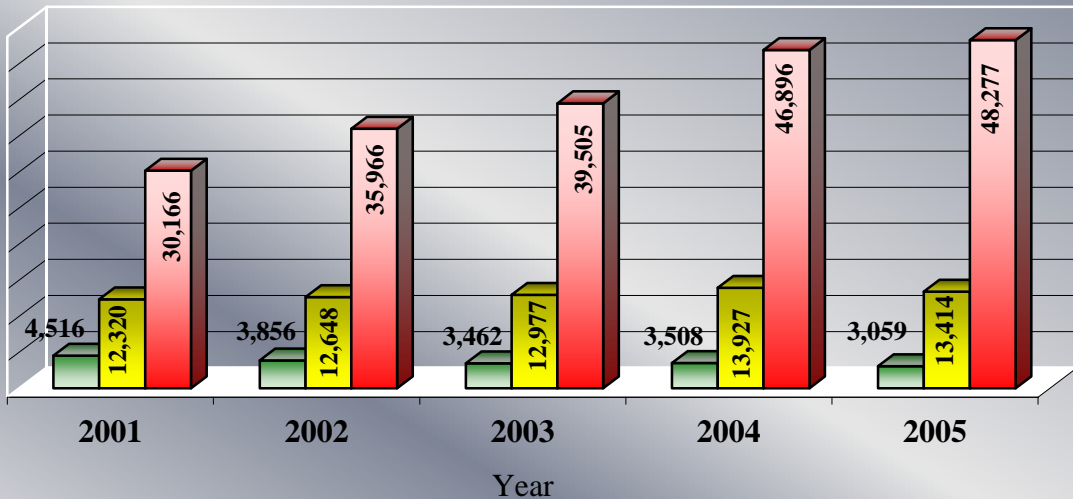


* Million vehicle miles

PERSONS INVOLVED IN CRASHES BY INJURY SEVERITY

5 YEAR TREND

Injury Description	Number of Persons				
	2001	2002	2003	2004	2005
Fatal Injury	611	641	641	721	654
Incapacitating Injury	4,516	3,856	3,462	3,508	3,059
Non-Incapacitating Injury	12,320	12,648	12,977	13,927	13,414
Possible Injury/No Visible Injury	30,166	35,966	39,505	46,896	48,277
No Injury/Property Damage Only	135,814	137,185	130,545	131,148	118,396



■ Incapacitating Injury

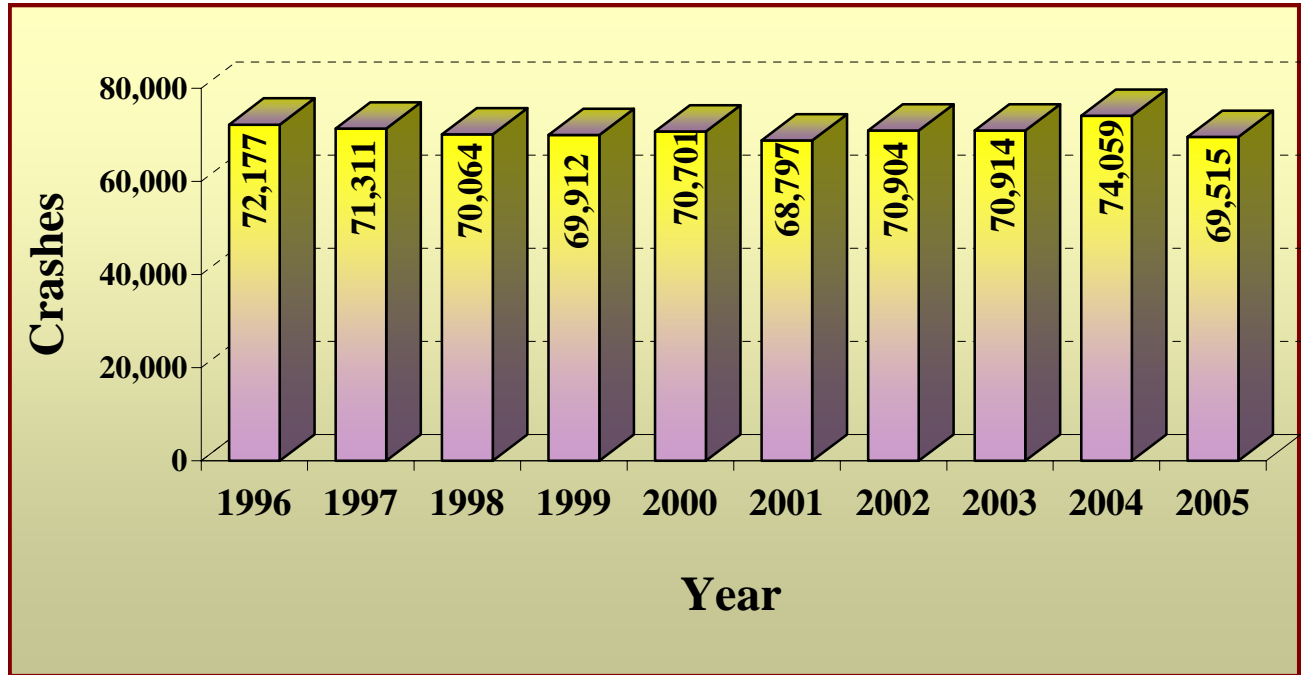
■ Non-Incapacitating Injury

■ Possible Injury/No Visible Injury

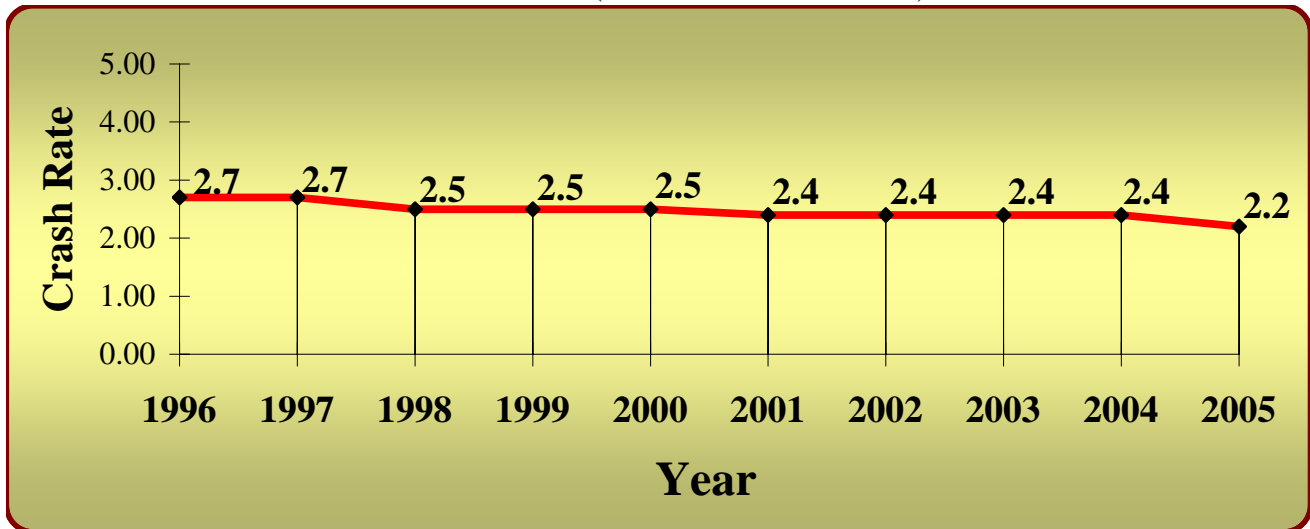
TOTAL CRASHES AND RATES

10 YEAR TRENDS

STATEWIDE CRASHES



CRASH RATE (CRASHES PER MVM*)

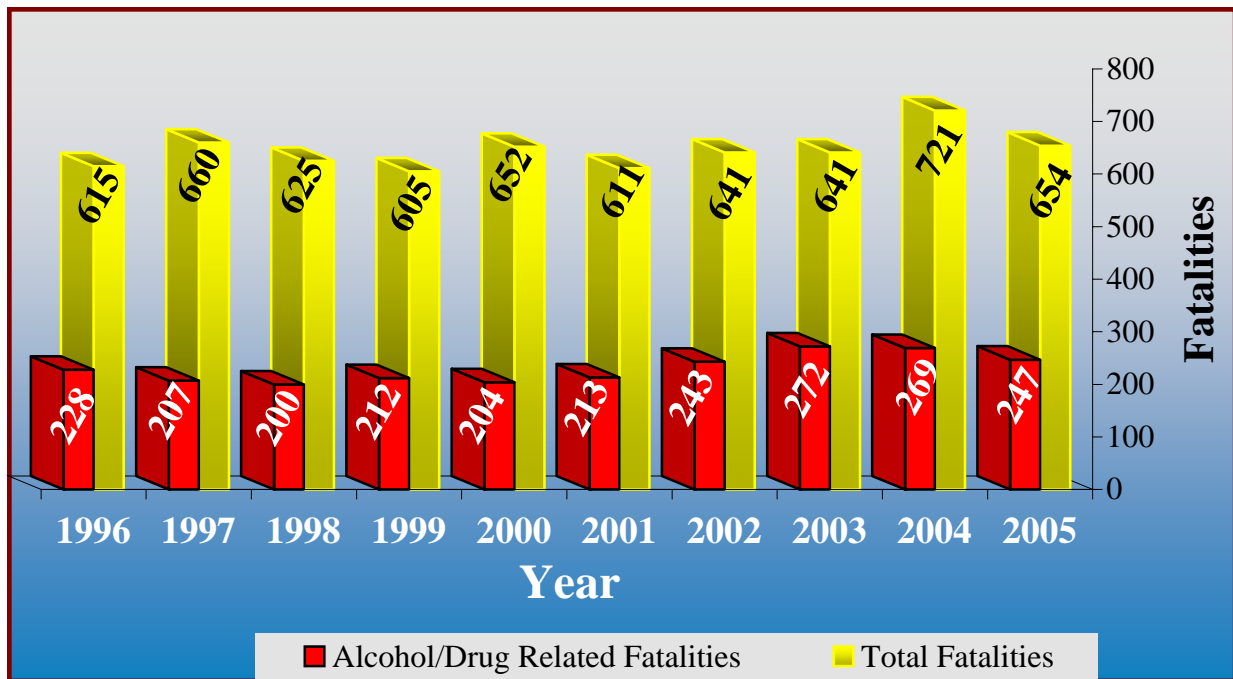


* Million vehicle miles

ALCOHOL/DRUG RELATED FATALITIES VS. TOTAL FATALITIES

10 YEAR TRENDS

Year	Alcohol/Drug Related Fatalities	Total Fatalities	Alcohol/Drug Fatalities as a % of Total
1996	228	615	37%
1997	207	660	31%
1998	200	625	32%
1999	212	605	35%
2000	204	652	31%
2001	213	611	35%
2002	243	641	38%
2003	272	641	42%
2004	269	721	37%
2005	247	654	38%

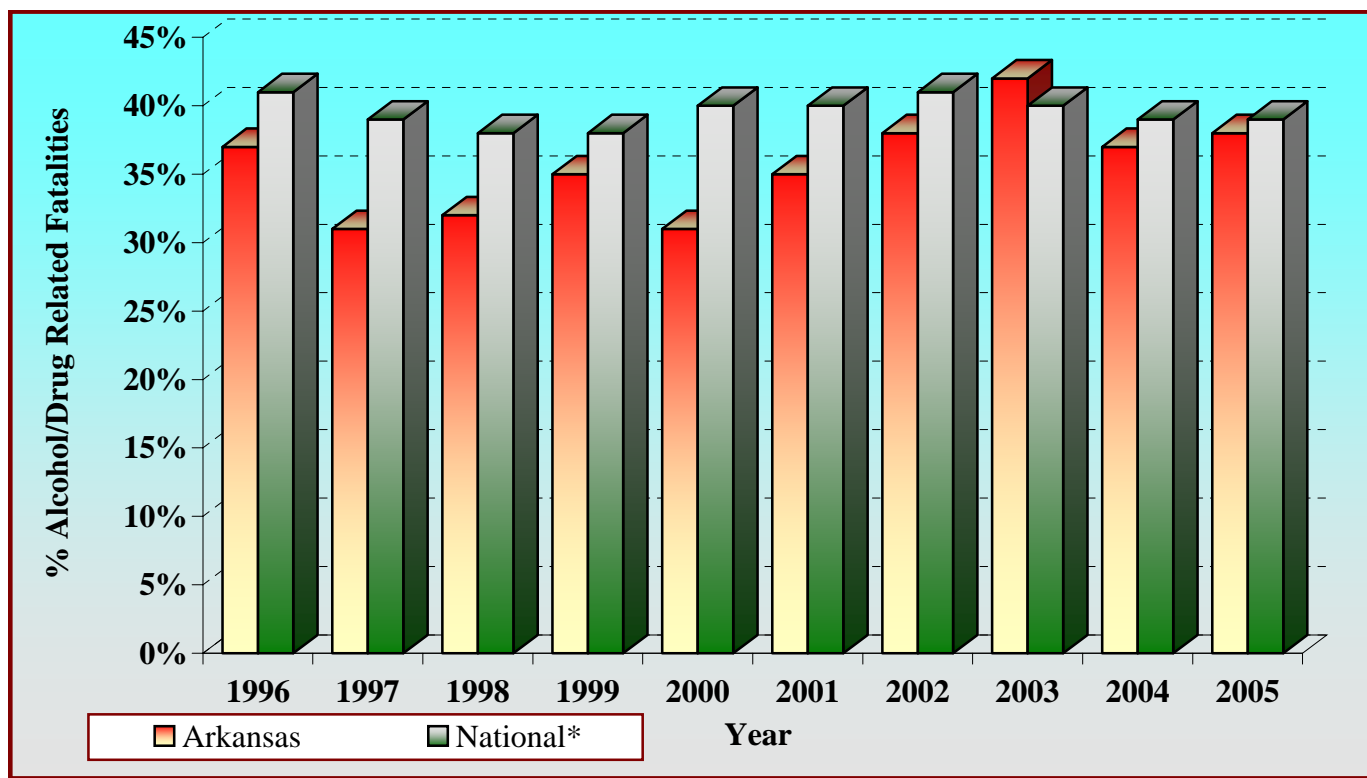


PERCENT ALCOHOL/DRUG RELATED FATALITIES ARKANSAS VS. NATIONAL

10 YEAR TRENDS

Year	Arkansas	National*
1996	37%	41%
1997	31%	39%
1998	32%	38%
1999	35%	38%
2000	31%	40%
2001	35%	40%
2002	38%	41%
2003	42%	40%
2004	37%	39%
2005	38%	39%

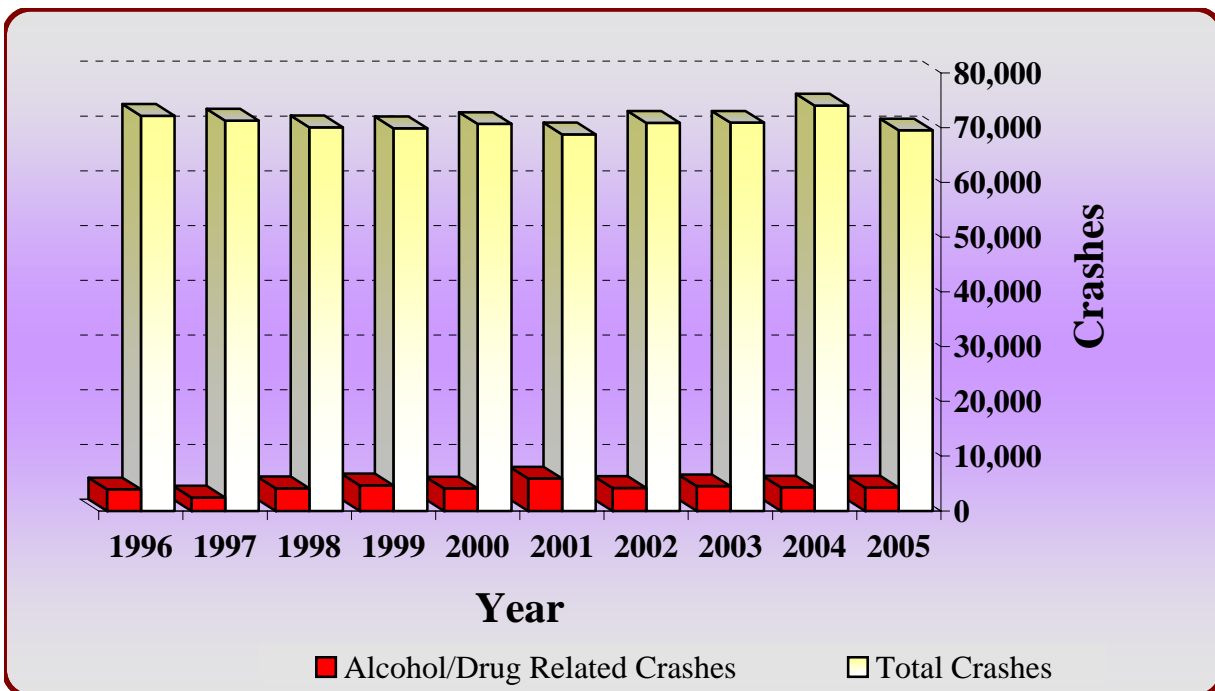
* Note: National figures represent alcohol related only.



ALCOHOL/DRUG RELATED CRASHES VS. TOTAL CRASHES

10 YEAR TRENDS

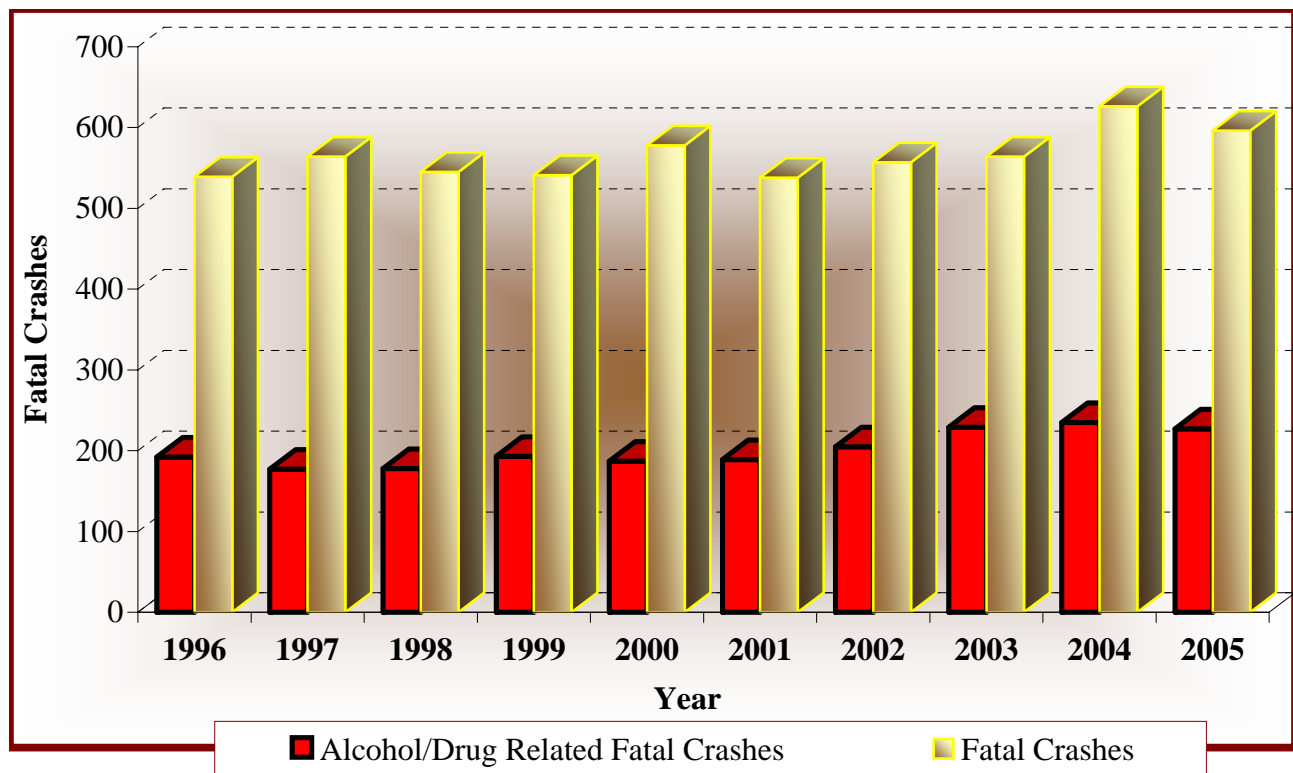
Year	Alcohol/Drug Related Crashes	Total Crashes	Alcohol/Drug as a % of Total Crashes
1996	3,921	72,177	5%
1997	2,452	71,311	3%
1998	4,125	70,064	6%
1999	4,645	69,912	7%
2000	4,097	70,701	6%
2001	5,912	68,797	9%
2002	4,203	70,904	6%
2003	4,503	70,914	6%
2004	4,293	74,059	6%
2005	4,266	69,515	6%



ALCOHOL/DRUG RELATED FATAL CRASHES VS. TOTAL FATAL CRASHES

10 YEAR TRENDS

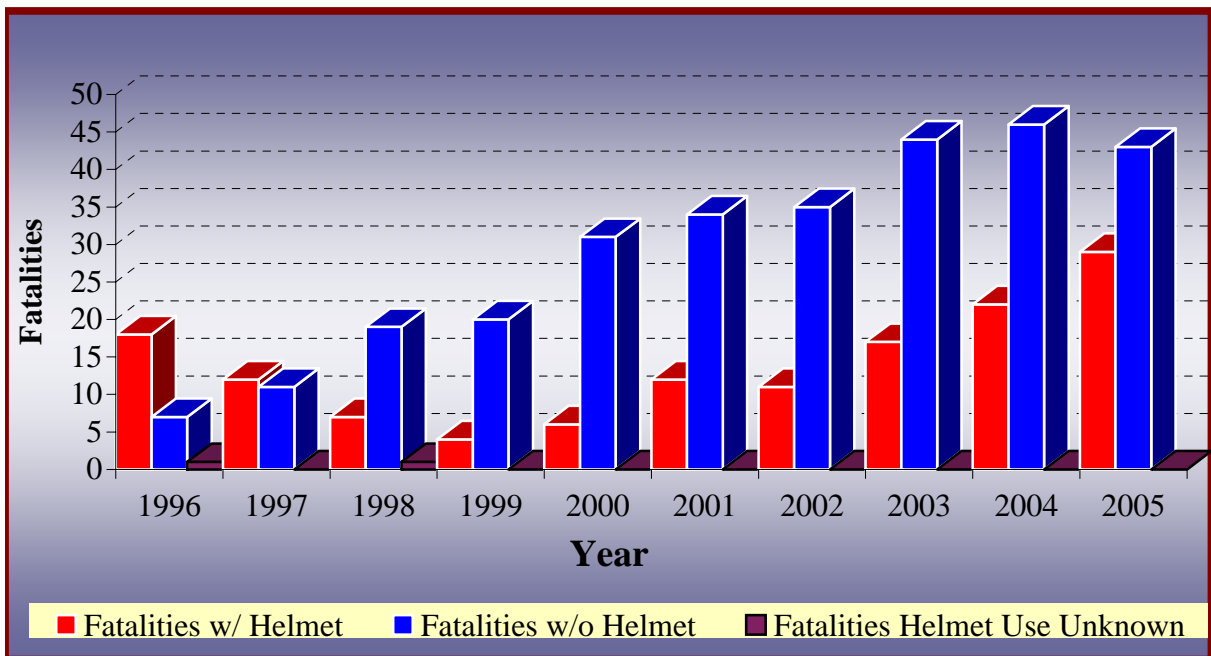
Year	Alcohol/Drug Related Fatal Crashes	Fatal Crashes	Alcohol/Drug Fatal Crashes as a % of Total
1996	192	539	36%
1997	177	564	31%
1998	178	545	33%
1999	193	541	36%
2000	187	578	32%
2001	189	538	35%
2002	205	557	37%
2003	229	564	41%
2004	235	626	37%
2005	227	596	38%



MOTORCYCLE CRASHES

10 YEAR TRENDS

Year	Total Crashes	Non Fatal Injuries	Fatal Crashes	Total Fatalities	Fatalities w/ Helmet	Fatalities w/o Helmet	Fatalities Helmet Use Unknown
1996	576	369	23	26	18	7	1
1997	571	499	23	23	12	11	0
1998	625	541	26	27	7	19	1
1999	647	588	23	24	4	20	0
2000	871	744	37	37	6	31	0
2001	1,032	919	41	46	12	34	0
2002	1,041	979	46	46	11	35	0
2003	1,117	1,002	57	61	17	44	0
2004	1,403	1,360	66	68	22	46	0
2005	1,706	1,590	72	72	29	43	0

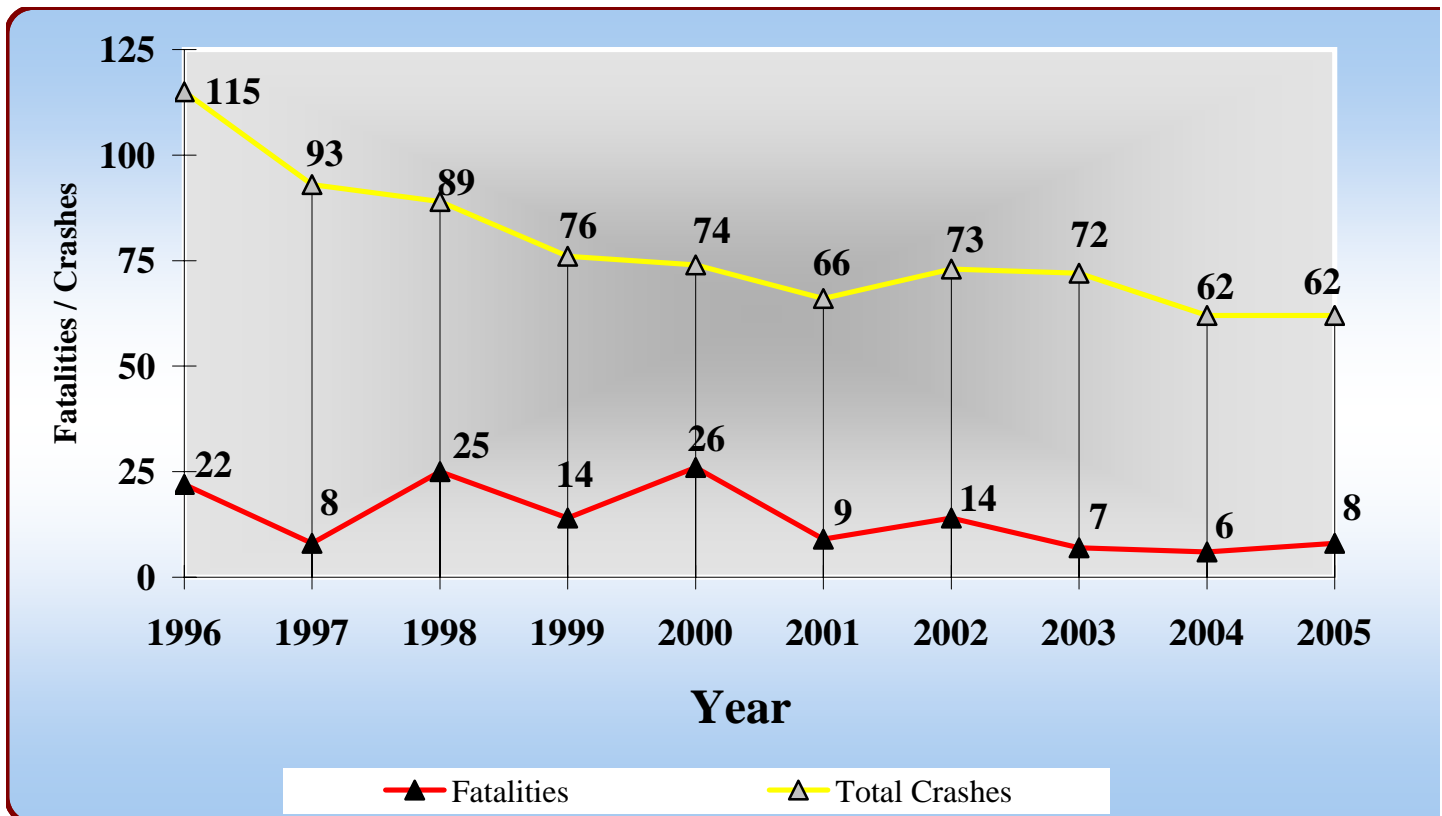


RAILROAD CRASHES, FATALITIES AND INJURIES

10 YEAR TRENDS

Year	Fatal Crashes	Nonfatal Injury Crashes	P.D.O. * Crashes	Total Crashes	Fatalities	Nonfatal Injuries
1996	20	41	54	115	22	52
1997	7	37	49	93	8	48
1998	20	30	39	89	25	49
1999	12	25	39	76	14	40
2000	17	21	36	74	26	36
2001	9	25	32	66	9	36
2002	13	30	30	73	14	42
2003	5	32	35	72	7	41
2004	6	25	31	62	6	33
2005	6	26	30	62	8	37

* Property Damage Only

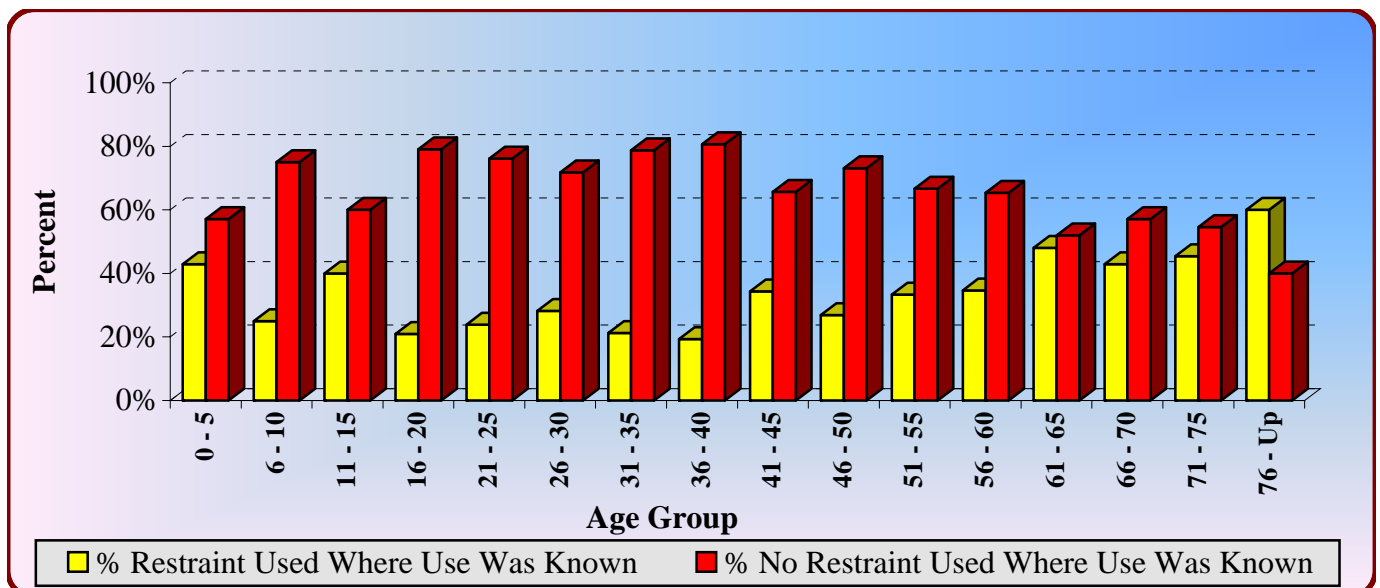


FATALITIES BY SAFETY RESTRAINT USAGE, PERCENT USED AND NOT USED

(Non-Motorist and Motorcycle Fatalities not included)

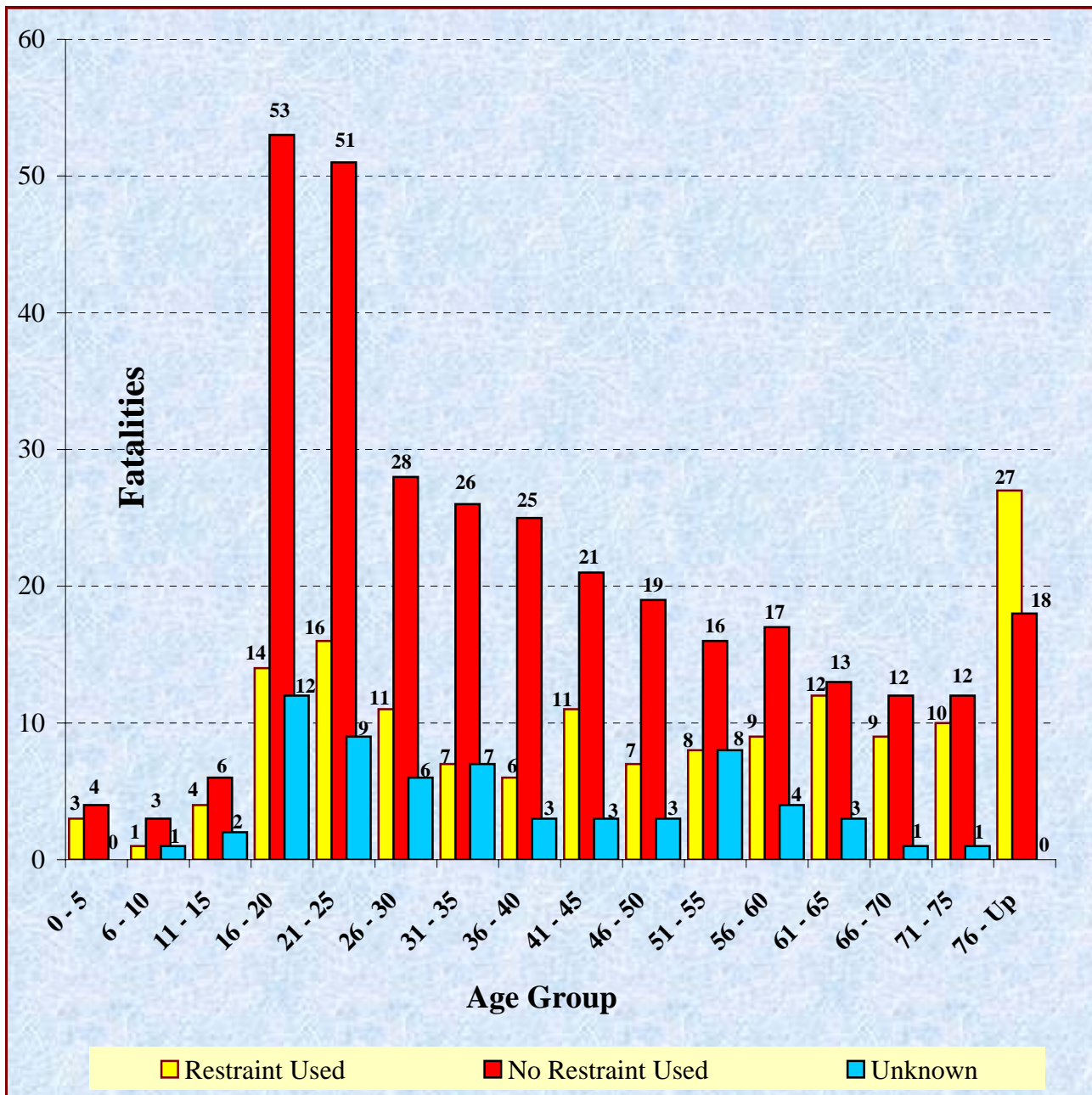
Age Group	Restraint Used	No Restraint Used	Unknown	% Restraint Used *	% No Restraint Used *
0 - 5	3	4	0	43%	57%
6 - 10	1	3	1	25%	75%
11 - 15	4	6	2	40%	60%
16 - 20	14	53	12	21%	79%
21 - 25	16	51	9	24%	76%
26 - 30	11	28	6	28%	72%
31 - 35	7	26	7	21%	79%
36 - 40	6	25	3	19%	81%
41 - 45	11	21	3	34%	66%
46 - 50	7	19	3	27%	73%
51 - 55	8	16	8	33%	67%
56 - 60	9	17	4	35%	65%
61 - 65	12	13	3	48%	52%
66 - 70	9	12	1	43%	57%
71 - 75	10	12	1	45%	55%
76 - Up	27	18	0	60%	40%
Total	155	324	63	32%	68%

* Percentage calculated using only fatalities where restraint use was known.



FATALITIES BY SAFETY RESTRAINT USAGE BY AGE GROUP

(Motorcyclists and non-motorists are excluded.)



FATALITIES BY SAFETY RESTRAINT BY AGE

(Motorcyclists and non-motorists are excluded.)

Age	None Used	Child Safety	Lap And/Or	Unknown		AGE	None Used	Child Safety	Lap And/Or	Unknown
1	0	1	0	0		48	5	0	1	0
2	2	1	0	0		49	6	0	1	0
4	1	0	0	0		50	3	0	2	1
5	1	1	0	0		51	4	0	2	0
7	1	0	0	0		52	4	0	2	2
8	0	0	1	0		53	3	0	2	1
9	1	0	0	1		54	1	0	0	3
10	1	0	0	0		55	4	0	2	2
11	0	0	1	0		56	4	0	1	0
13	1	0	1	2		57	7	0	1	0
14	3	0	1	0		58	0	0	2	1
15	2	0	1	0		59	4	0	2	1
16	6	0	4	2		60	2	0	3	2
17	8	0	1	4		61	2	0	1	0
18	14	0	2	0		62	0	0	4	1
19	11	0	4	5		63	5	0	3	2
20	14	0	3	1		64	3	0	3	0
21	8	0	5	2		65	3	0	1	0
22	12	0	4	2		66	4	0	3	0
23	17	0	3	1		67	2	0	1	1
24	8	0	4	2		69	3	0	4	0
25	6	0	0	2		70	3	0	1	0
26	7	0	2	1		71	5	0	0	0
27	9	0	3	3		72	3	0	5	0
28	8	0	1	2		73	1	0	0	0
29	1	0	1	0		74	2	0	2	1
30	3	0	4	0		75	1	0	3	0
31	6	0	0	2		76	0	0	3	0
32	9	0	3	2		77	1	0	3	0
33	4	0	2	1		78	1	0	3	0
34	3	0	2	1		79	0	0	1	0
35	4	0	0	1		80	1	0	0	0
36	5	0	1	0		81	2	0	4	0
37	7	0	2	1		82	1	0	0	0
38	4	0	0	1		83	1	0	0	0
39	5	0	0	0		84	0	0	2	0
40	4	0	3	1		85	5	0	1	0
41	5	0	4	1		86	1	0	5	0
42	2	0	3	1		88	2	0	1	0
43	4	0	2	0		89	2	0	0	0
44	6	0	1	0		90	0	0	1	0
45	4	0	1	1		91	0	0	2	0
46	4	0	1	0		94	0	0	1	0
47	1	0	2	2		99	1	0	0	0
						Total	324	3	152	63

FATALITIES BY AGE AND PERSON TYPE

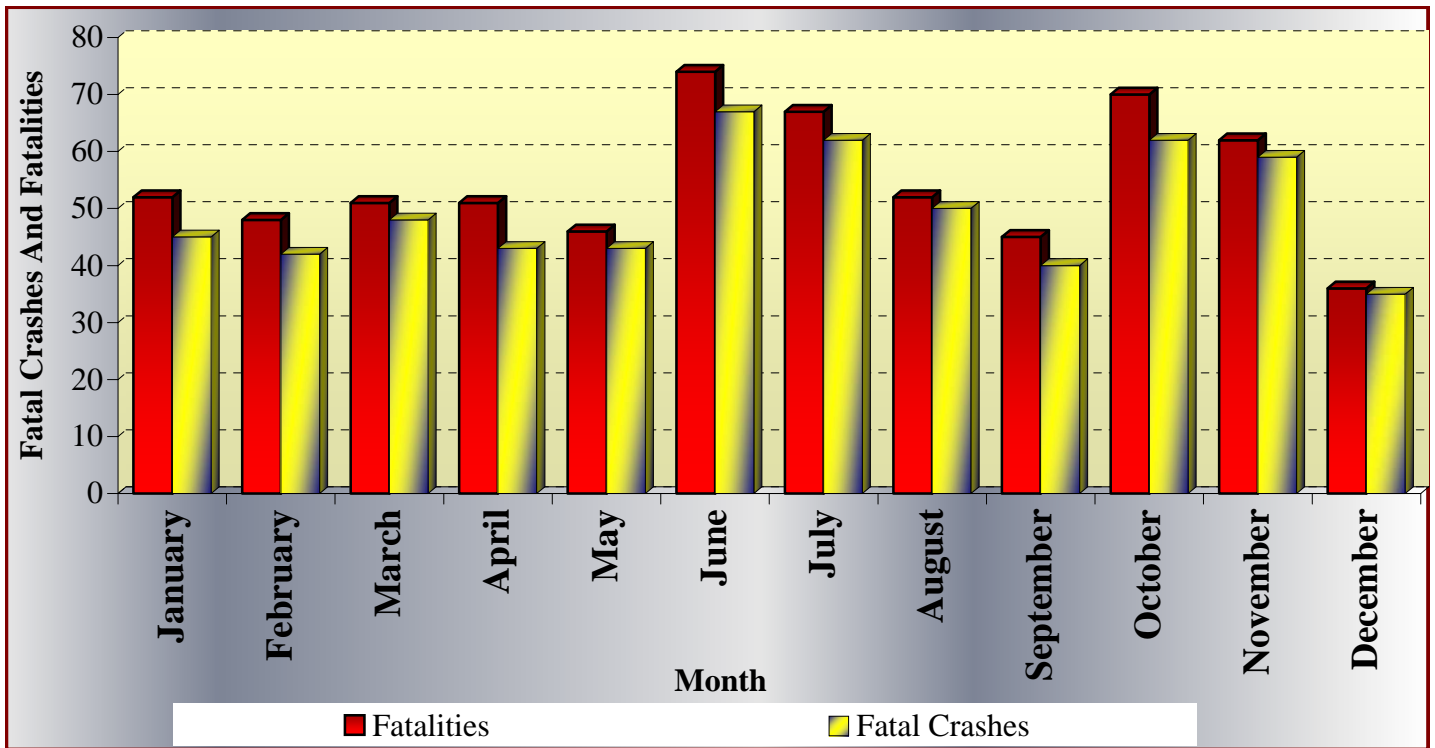
Age	Driver	Passenger	Non-Motorist		Age	Driver	Passenger	Non-Motorist
1	0	1	1		48	9	0	1
2	0	3	1		49	6	1	0
3	0	0	1		50	8	3	1
4	0	1	0		51	4	2	3
5	0	2	0		52	6	3	0
7	0	1	0		53	6	1	0
8	0	1	0		54	6	1	1
9	0	2	0		55	9	0	0
10	0	1	0		56	6	1	2
11	0	1	0		57	8	0	0
13	0	4	0		58	5	0	0
14	0	4	0		59	7	0	1
15	3	2	1		60	10	0	0
16	10	5	0		61	3	0	1
17	10	4	0		62	4	2	0
18	10	6	0		63	10	2	0
19	16	5	0		64	5	1	0
20	15	3	2		65	5	0	0
21	10	5	0		66	6	3	0
22	15	3	1		67	4	1	0
23	20	5	1		68	1	0	1
24	13	3	0		69	7	0	3
25	9	2	0		70	3	1	0
26	8	4	0		71	3	2	0
27	14	1	2		72	3	5	0
28	9	2	0		73	1	0	0
29	2	0	1		74	3	2	0
30	8	0	0		75	3	1	0
31	11	0	3		76	1	2	1
32	15	2	1		77	4	0	0
33	7	0	0		78	3	1	0
34	5	1	0		79	1	0	0
35	8	0	1		80	1	0	2
36	6	0	0		81	3	3	2
37	10	1	0		82	1	0	0
38	6	1	0		83	1	0	0
39	6	0	1		84	1	1	0
40	7	3	0		85	4	2	0
41	10	1	0		86	5	1	0
42	8	0	0		88	2	1	0
43	7	0	1		89	2	0	0
44	5	2	1		90	0	1	0
45	6	2	1		91	0	2	0
46	5	1	0		94	0	1	0
47	7	0	0		99	1	0	1
					Total	482	132	40

ALCOHOL/DRUG RELATED FATALITIES BY AGE AND PERSON TYPE

Age	Driver	Passenger	Non-Motorist		Age	Driver	Passenger	Non-Motorist
1	0	1	0		43	6	0	0
2	0	1	0		44	3	1	0
9	0	2	0		45	5	1	0
13	0	3	0		47	6	0	0
14	0	1	0		48	4	0	1
15	0	1	0		49	5	0	0
16	0	2	0		50	4	1	1
17	3	0	0		51	2	0	0
18	2	2	0		52	5	1	0
19	4	1	0		53	3	1	0
20	8	1	1		54	2	0	0
21	6	2	0		55	5	0	0
22	6	2	0		56	2	0	0
23	6	1	1		57	5	0	0
24	5	2	0		58	2	0	0
25	5	1	0		59	3	0	0
26	6	4	0		60	4	0	0
27	7	0	0		61	1	0	0
28	6	0	0		63	0	1	0
29	1	0	0		64	3	0	0
30	3	0	0		65	1	0	0
31	8	0	1		66	2	1	0
32	6	2	0		67	0	1	0
33	5	0	0		68	1	0	0
34	1	0	0		69	0	0	1
35	5	0	1		71	1	0	0
36	3	0	0		72	1	1	0
37	6	0	0		74	1	0	0
38	3	0	0		76	1	0	0
39	3	0	0		80	0	0	1
40	2	3	0		81	0	0	1
41	6	0	0		99	1	0	0
42	2	0	0		Total	197	41	9

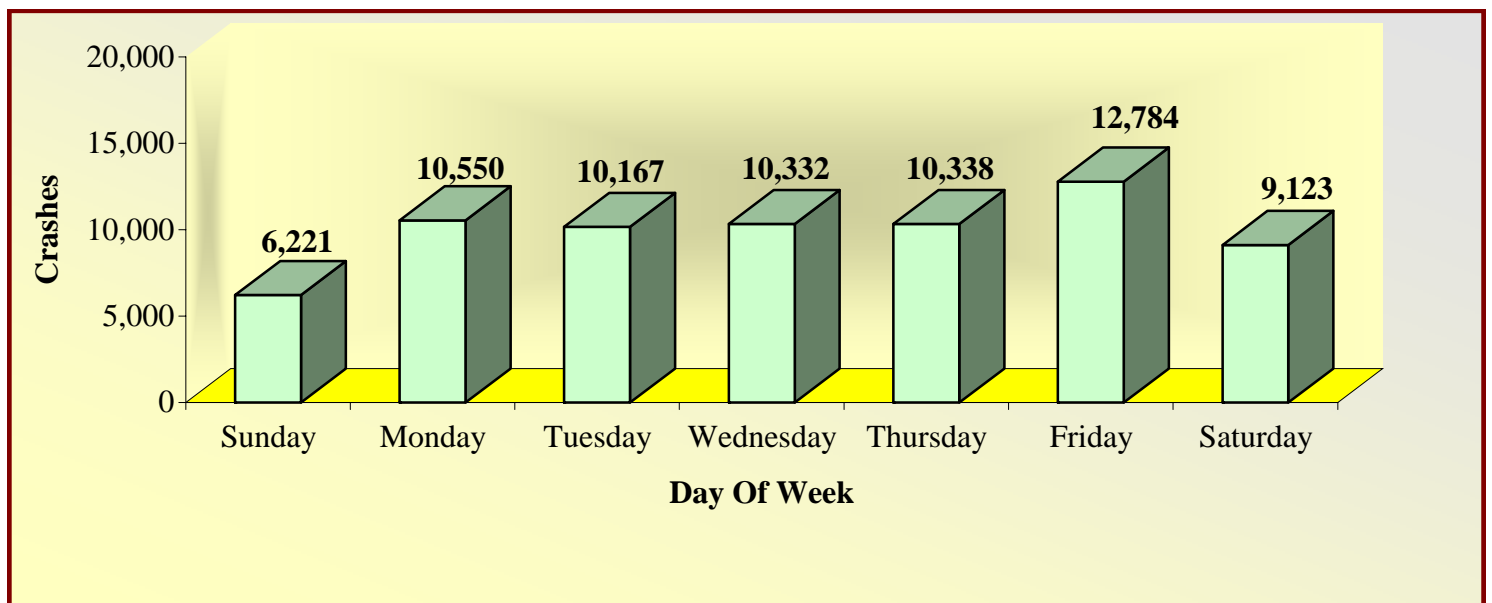
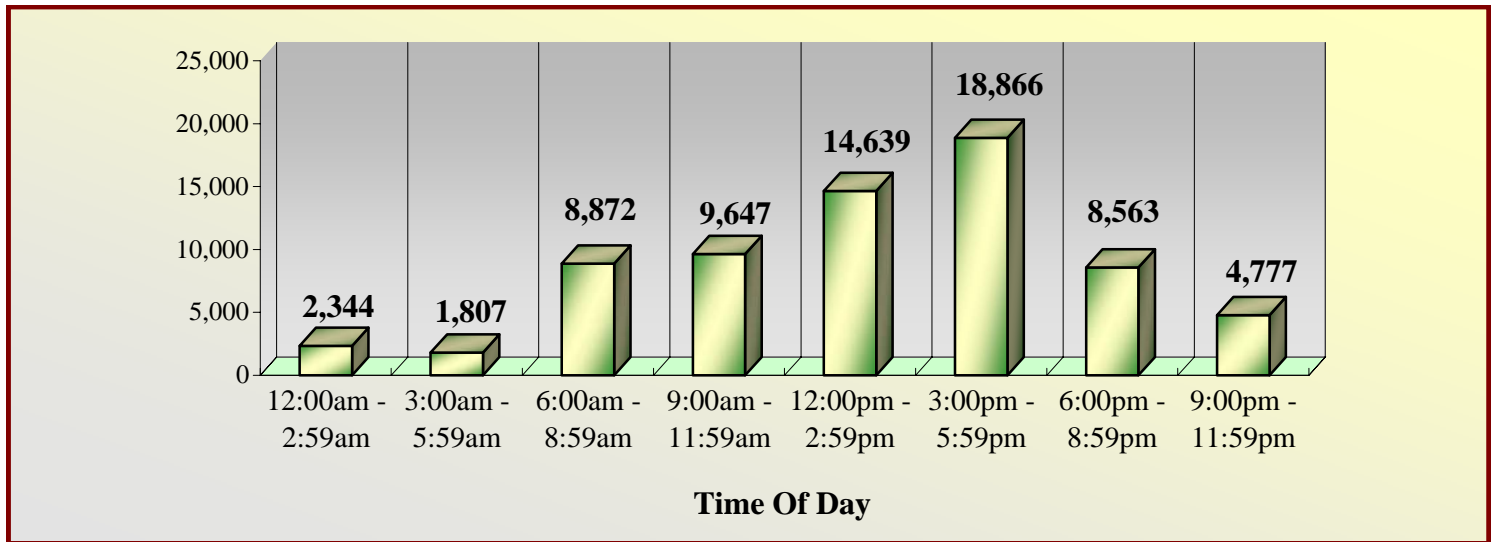
FATALITIES AND FATAL CRASHES BY MONTH

Month	Fatalities	Fatal Crashes
January	52	45
February	48	42
March	51	48
April	51	43
May	46	43
June	74	67
July	67	62
August	52	50
September	45	40
October	70	62
November	62	59
December	36	35
Total	654	596



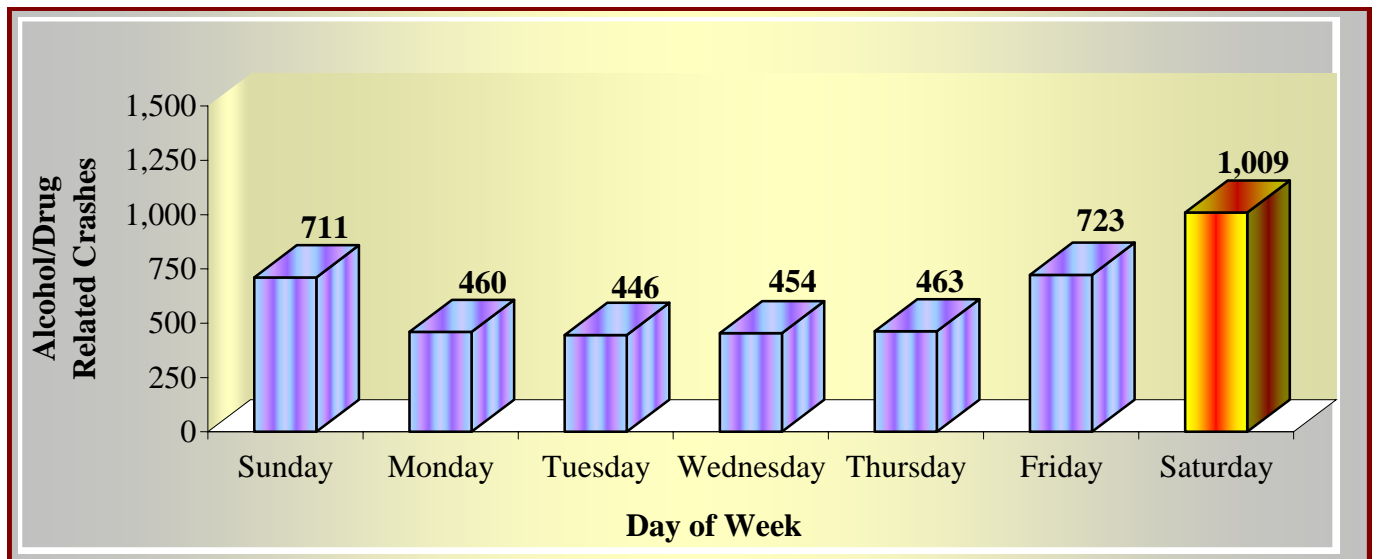
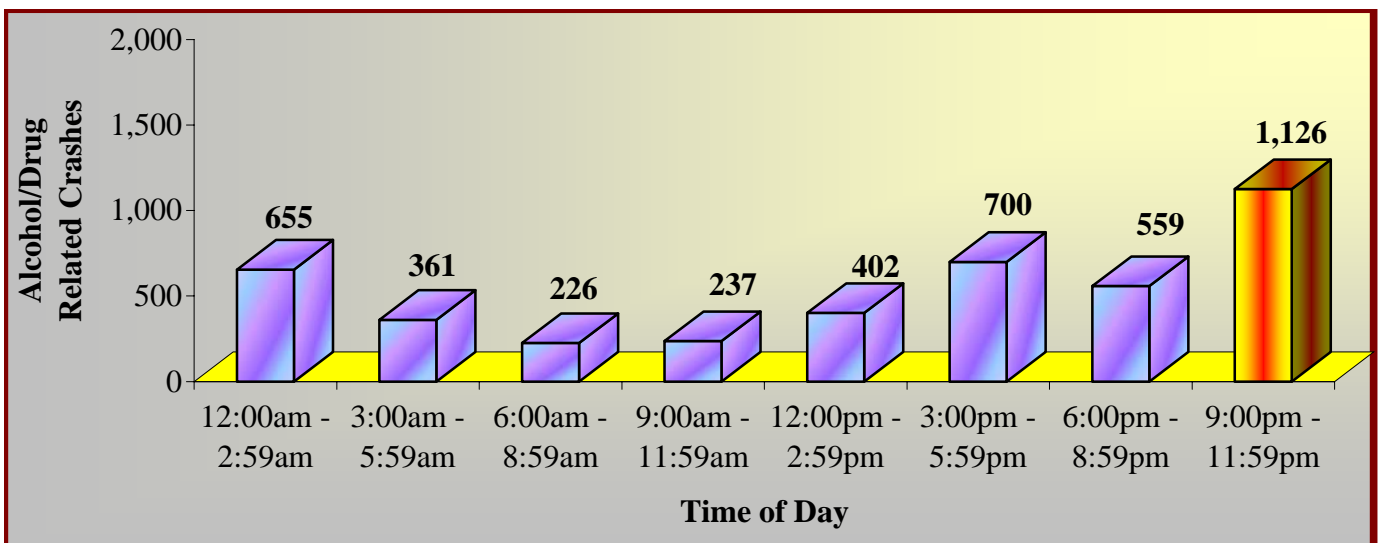
CRASHES BY TIME OF DAY AND DAY OF WEEK

Time of Day	Sunday	Monday	Tuesday	Wednesday	Thursday	Friday	Saturday	Total
12:00am - 2:59am	615	197	224	216	203	276	613	2,344
3:00am - 5:59am	411	162	201	188	223	251	371	1,807
6:00am - 8:59am	355	1,581	1,591	1,605	1,592	1,614	534	8,872
9:00am - 11:59am	756	1,528	1,403	1,471	1,433	1,707	1,349	9,647
12:00pm - 2:59pm	1,322	2,302	2,055	2,042	2,155	2,807	1,956	14,639
3:00pm - 5:59pm	1,271	3,074	3,005	3,025	3,014	3,588	1,889	18,866
6:00pm - 8:59pm	934	1,136	1,151	1,260	1,129	1,544	1,409	8,563
9:00pm - 11:59pm	557	570	537	525	589	997	1,002	4,777
Total	6,221	10,550	10,167	10,332	10,338	12,784	9,123	69,515



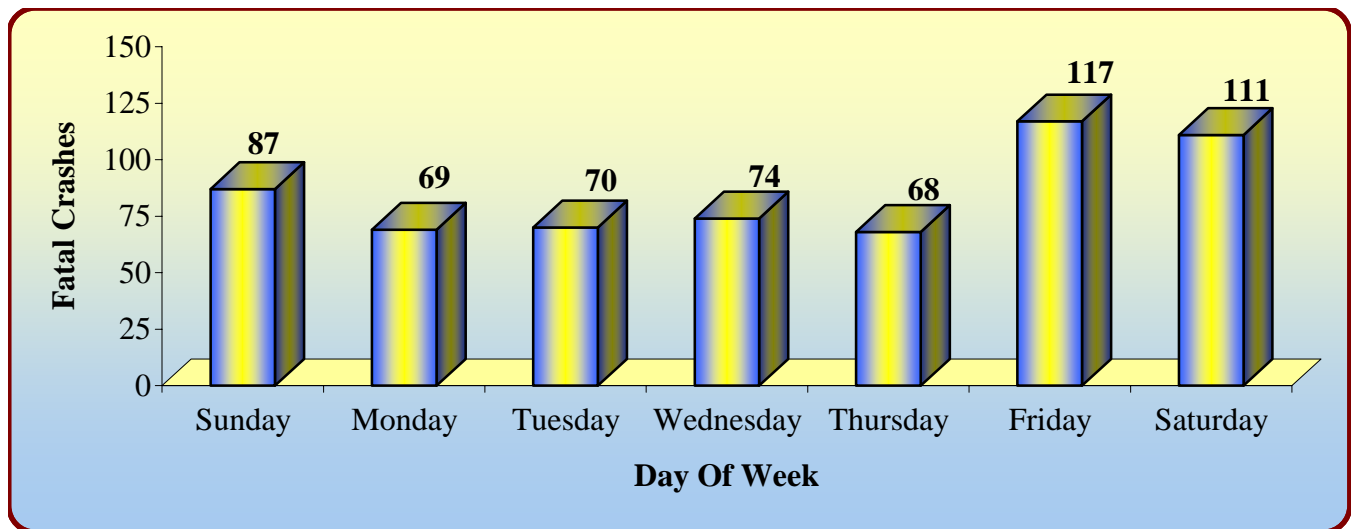
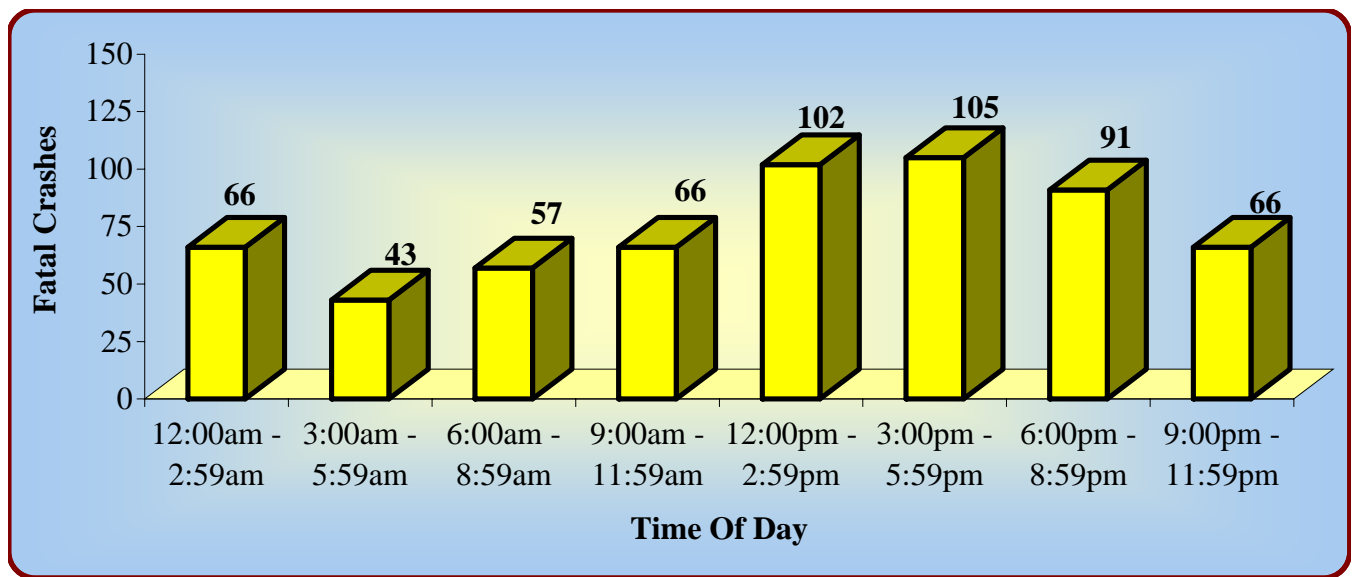
ALCOHOL/DRUG RELATED CRASHES BY TIME OF DAY AND DAY OF WEEK

Time of Day	Sunday	Monday	Tuesday	Wednesday	Thursday	Friday	Saturday	Total
12:00am - 2:59am	181	35	39	54	55	82	209	655
3:00am - 5:59am	126	21	17	19	24	37	117	361
6:00am - 8:59am	39	25	26	32	26	39	39	226
9:00am - 11:59am	27	22	36	35	25	41	51	237
12:00pm - 2:59pm	55	48	53	43	60	67	76	402
3:00pm - 5:59pm	81	107	84	83	92	126	127	700
6:00pm - 8:59pm	79	73	67	70	61	95	114	559
9:00pm - 11:59pm	123	129	124	118	120	236	276	1,126
Total	711	460	446	454	463	723	1,009	4,266



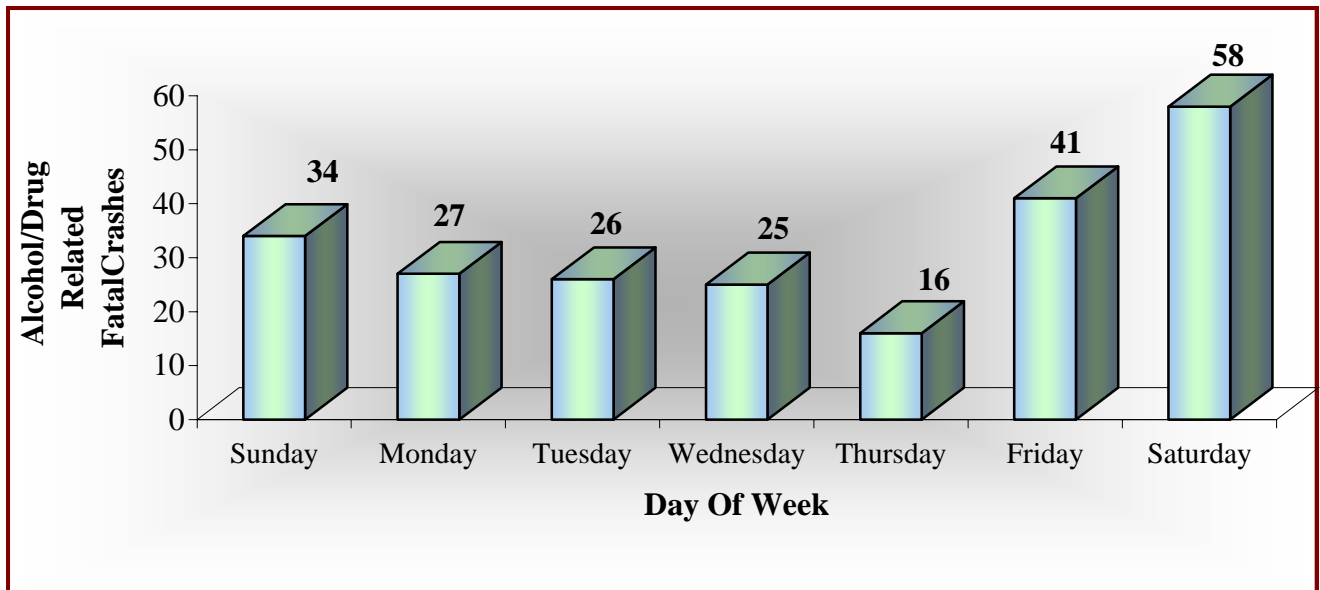
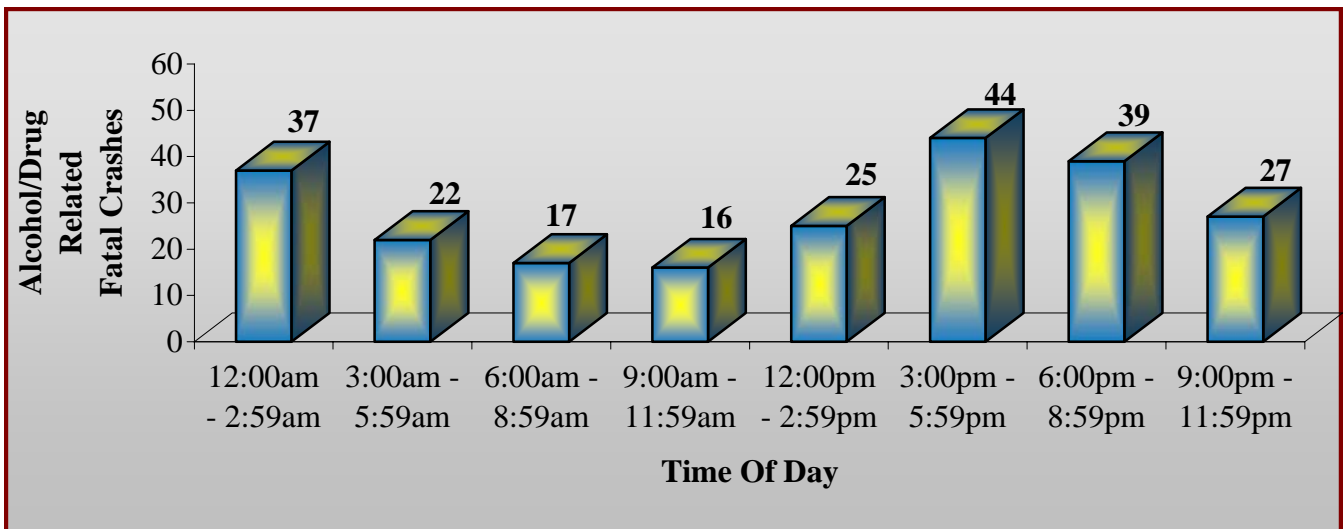
FATAL CRASHES BY TIME OF DAY AND DAY OF WEEK

Time of Day	Sunday	Monday	Tuesday	Wednesday	Thursday	Friday	Saturday	Total
12:00am - 2:59am	16	5	6	9	5	9	16	66
3:00am - 5:59am	7	4	2	5	7	9	9	43
6:00am - 8:59am	7	6	7	9	9	11	8	57
9:00am - 11:59am	9	10	14	10	5	8	10	66
12:00pm - 2:59pm	18	10	11	12	13	21	17	102
3:00pm - 5:59pm	14	17	10	11	11	24	18	105
6:00pm - 8:59pm	12	6	13	11	9	22	18	91
9:00pm - 11:59pm	4	11	7	7	9	13	15	66
Total	87	69	70	74	68	117	111	596



ALCOHOL/DRUG RELATED FATAL CRASHES BY TIME OF DAY AND DAY OF WEEK

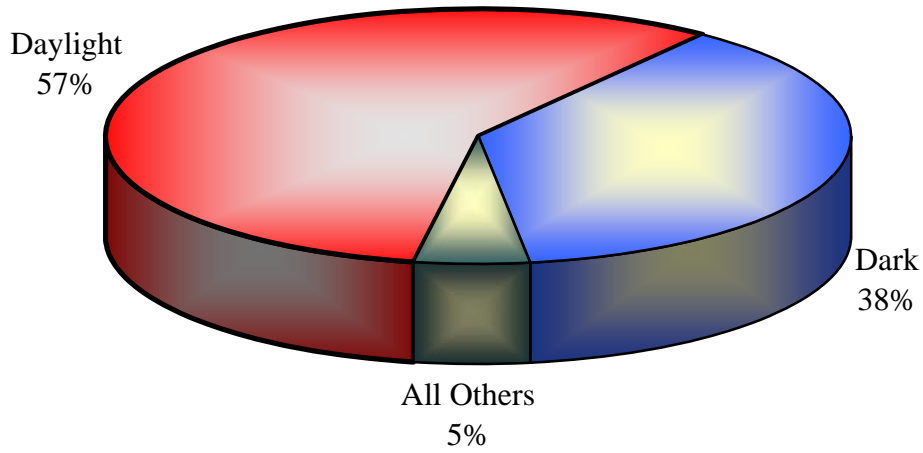
Time of Day	Sunday	Monday	Tuesday	Wednesday	Thursday	Friday	Saturday	Total
12:00am - 2:59am	11	4	3	5	1	6	7	37
3:00am - 5:59am	5	3	0	1	1	3	9	22
6:00am - 8:59am	3	2	0	2	2	6	2	17
9:00am - 11:59am	1	2	6	2	0	1	4	16
12:00pm - 2:59pm	3	1	5	4	6	1	5	25
3:00pm - 5:59pm	7	8	4	5	2	7	11	44
6:00pm - 8:59pm	3	3	4	4	3	11	11	39
9:00pm - 11:59pm	1	4	4	2	1	6	9	27
Total	34	27	26	25	16	41	58	227



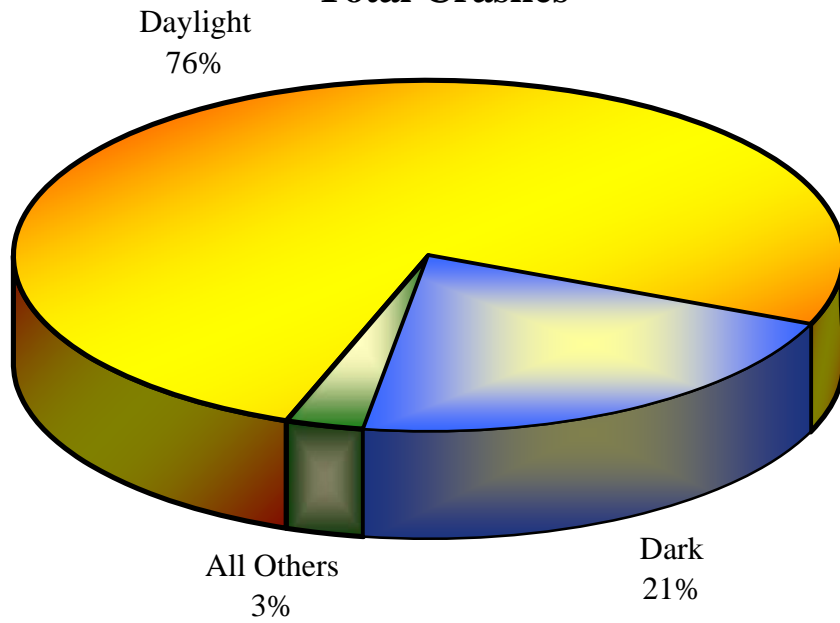
CRASHES BY LIGHTING CONDITIONS

Light Condition	Fatal Crashes	Total Crashes
Daylight	342	52,666
Dark	225	14,674
Other	27	1,969
Unknown	2	206
Total	596	69,515

Fatal Crashes



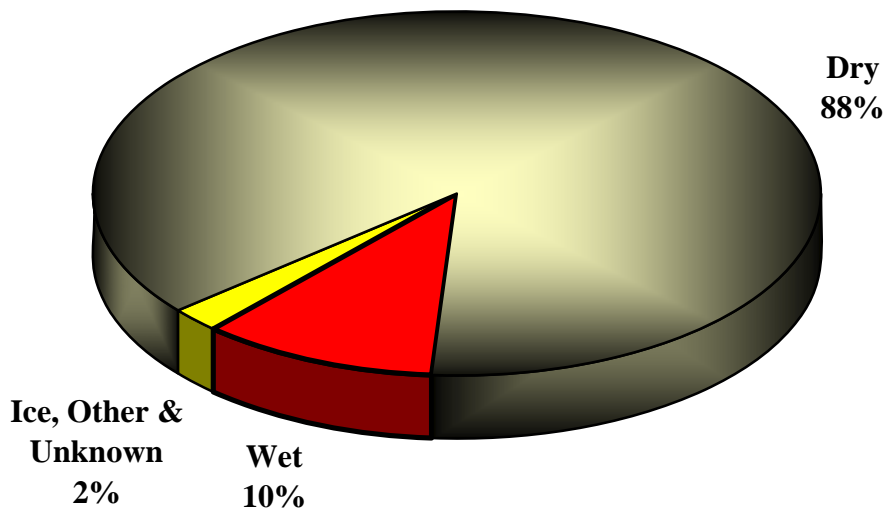
Total Crashes



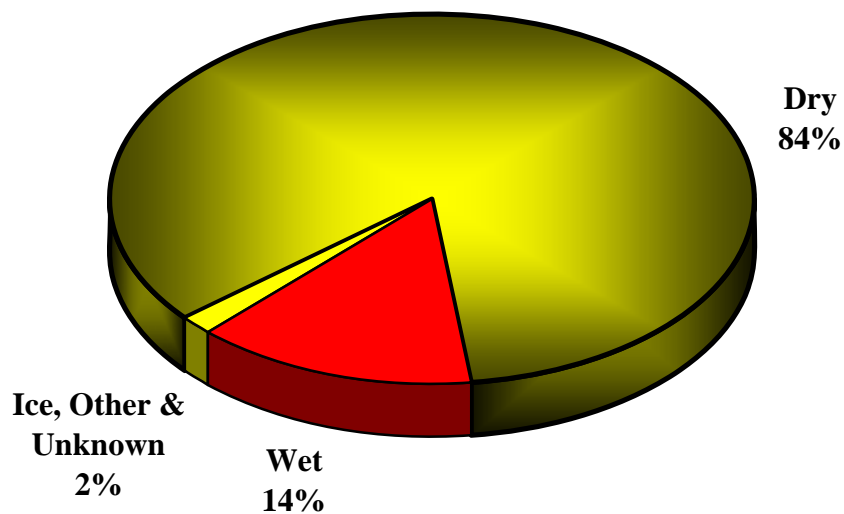
CRASHES BY ROAD SURFACE CONDITIONS

Condition	Fatal Crashes	Total Crashes
Dry	520	58,537
Wet	62	9,869
Ice	3	346
Other	4	343
Unknown	7	420
Total	596	69,515

Fatal Crashes



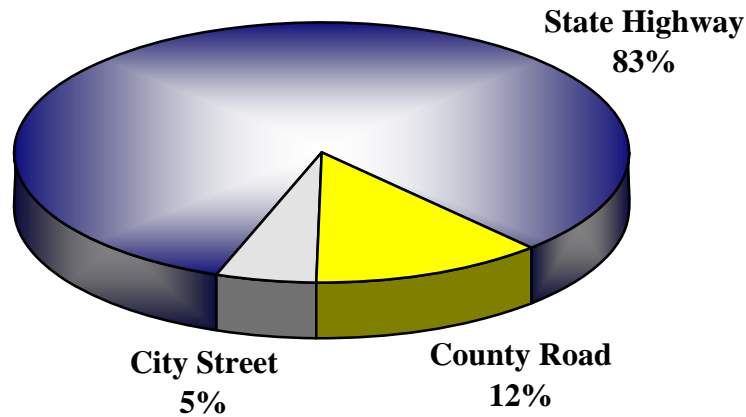
Total Crashes



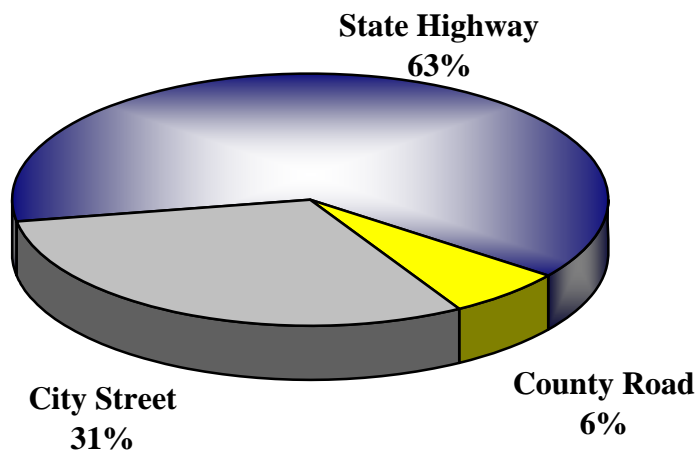
CRASHES BY ROAD SYSTEM

Road System	Fatal Crashes	Nonfatal Injury	P.D.O. * Crashes	Total Crashes
State Highway	491	21,259	22,058	43,808
County Road	74	2,925	1,429	4,428
City Street	31	8,491	12,757	21,279
Totals	596	32,675	36,244	69,515

Fatal Crashes



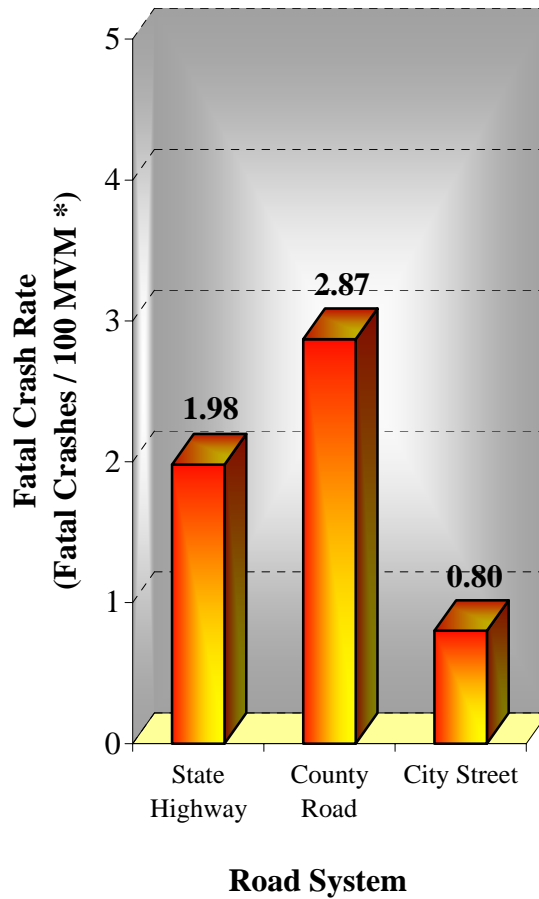
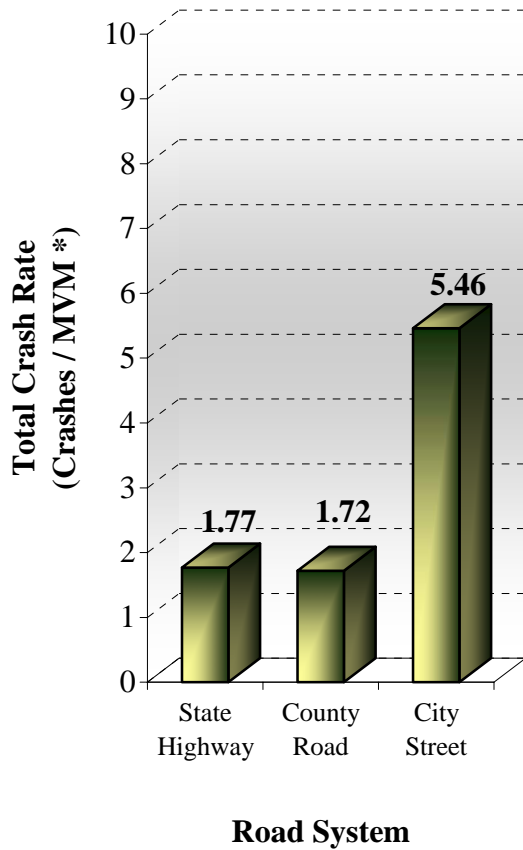
Total Crashes



* Property Damage Only Crashes

CRASH RATES BY ROAD SYSTEM

Road System	Annual MVM*	Total Crashes	Crashes per MVM*	Fatal Crashes	Fatal Crashes per 100 MVM*
State Highway	24,763	43,808	1.77	491	1.98
County Road	2,578	4,428	1.72	74	2.87
City Street	3,895	21,279	5.46	31	0.80
Totals	31,236	69,515	2.23	596	1.91

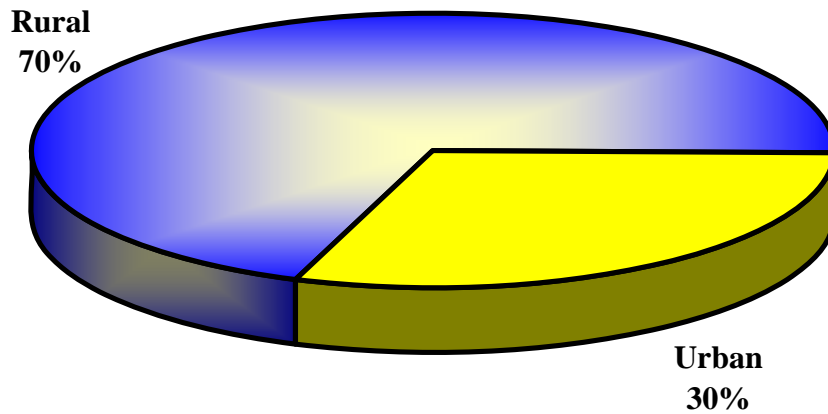


* Million vehicle miles

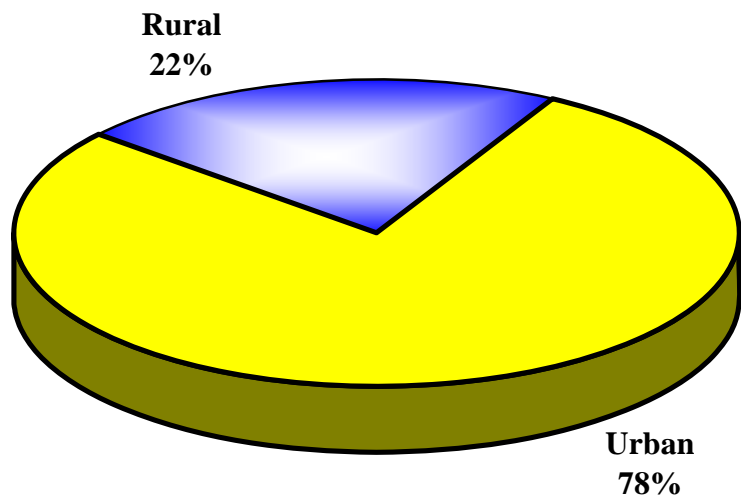
CRASHES BY RURAL/URBAN LOCATION

Location	Fatal Crashes	Total Crashes
Rural	415	15,261
Urban	181	54,254
Total	596	69,515

Fatal Crashes

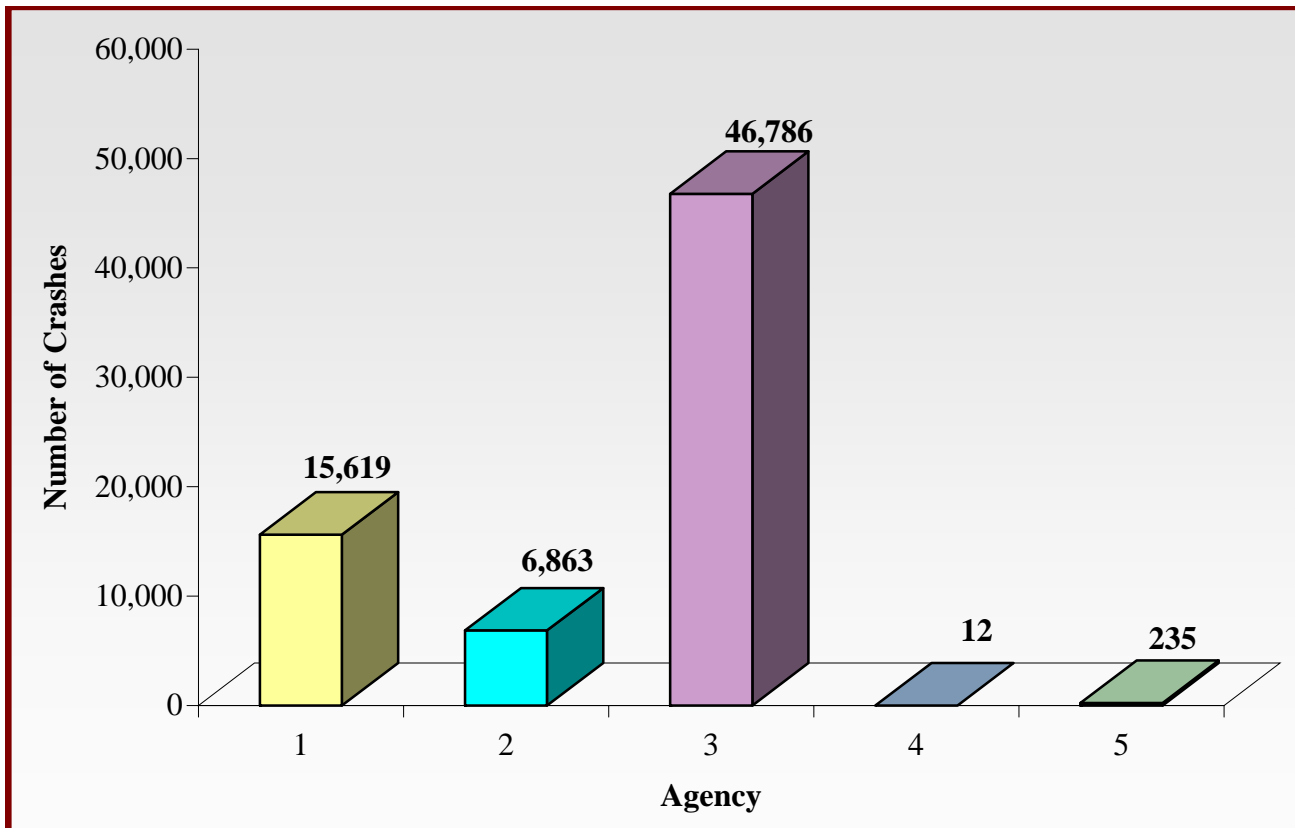


Total Crashes



CRASHES BY INVESTIGATING AGENCY

Agency	Total Crashes	% of Total
State Police	15,619	22.47%
County Sheriff	6,863	9.87%
City Police	46,786	67.30%
Local Marshal	12	0.02%
Campus Security	235	0.34%
Total	69,515	100.00%



CRASHES BY TYPE OF COLLISION

All Crashes						
Type Of Collision	Fatal Crashes	Fatalities	Injury Crashes	Injuries	P.D.O. *	Total Crashes
<i>Angle</i>	111	133	9,942	22,219	10,672	20,725
<i>Backing (Rear to Rear)</i>			533	1,263	1,027	1,560
<i>Head On</i>	81	97	890	2,217	438	1,409
<i>Rear End</i>	40	45	8,999	20,027	11,210	20,249
<i>Sideswipe Opposite Direction</i>	11	12	860	2,028	978	1,849
<i>Sideswipe Same Direction</i>	15	15	1,764	3,879	3,943	5,722
<i>Single Vehicle Crash</i>	338	352	9,687	13,117	7,976	18,001
Total	596	654	32,675	64,750	36,244	69,515

Alcohol and Other Drug Related Crashes						
Type Of Collision	Fatal Crashes	Fatalities	Injury Crashes	Injuries	P.D.O. *	Total Crashes
<i>Angle</i>	30	41	405	971	212	647
<i>Backing (Rear to Rear)</i>			12	23	17	29
<i>Head On</i>	37	43	118	346	20	175
<i>Rear End</i>	13	13	343	803	256	612
<i>Sideswipe Opposite Direction</i>			79	202	45	124
<i>Sideswipe Same Direction</i>	2	2	68	147	98	168
<i>Single Vehicle Crash</i>	145	148	1,599	2,145	767	2,511
Total	227	247	2,624	4,637	1,415	4,266

*Property Damage Only

VEHICLES INVOLVED BY FIRST HARMFUL EVENT

Harmful Event	Single Vehicle Crashes			Multi-Vehicle Crashes		
	Fatal Crashes	Injury Crashes	P.D.O.* Crashes	Fatal Crashes	Injury Crashes	P.D.O.* Crashes
Animal	2	99	80	0	5	3
Bank or Ledge	48	1,937	1,155	0	6	3
Bridge - Underpass	4	174	156	0	1	0
Fell From Vehicle	2	39	5	1	3	2
Fence or Fence Post	11	486	557	1	3	0
Fire	0	0	1	0	0	2
Guard Rail or Post	7	338	332	3	4	4
House - Building	2	90	122	0	0	0
Immersion	1	7	15	0	0	0
Impact Cushion Device	0	16	21	0	0	0
Mv In Other Roadway	0	1	1	0	72	50
MV In Transport	1	80	55	557	48,362	58,001
Overturned	97	1,535	558	2	6	1
Parked Vehicle	7	529	1,660	1	13	13
Pedalcycle	3	185	24	0	2	0
Pedestrian	35	372	17	5	18	1
Seizue/Blackout	1	18	4	0	1	5
Sign - Traffic Signal	6	390	545	0	4	3
Train	6	24	29	0	2	1
Tree(s)	69	1,574	870	0	3	1
Utility Pole	15	559	503	0	3	0
Other Non-Fixed Object	1	69	116	3	30	35
Other Fixed Object	20	1,131	1,104	0	46	27
Unknown	0	34	46	2	62	60
Total	338	9,687	7,976	575	48,646	58,212

*Property Damage Only

DRIVERS INVOLVED BY OPERATOR FACTOR

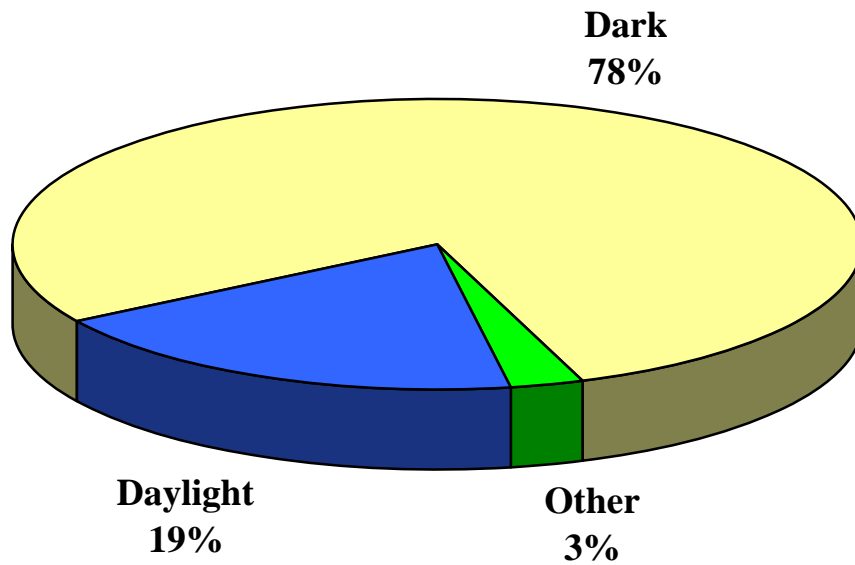
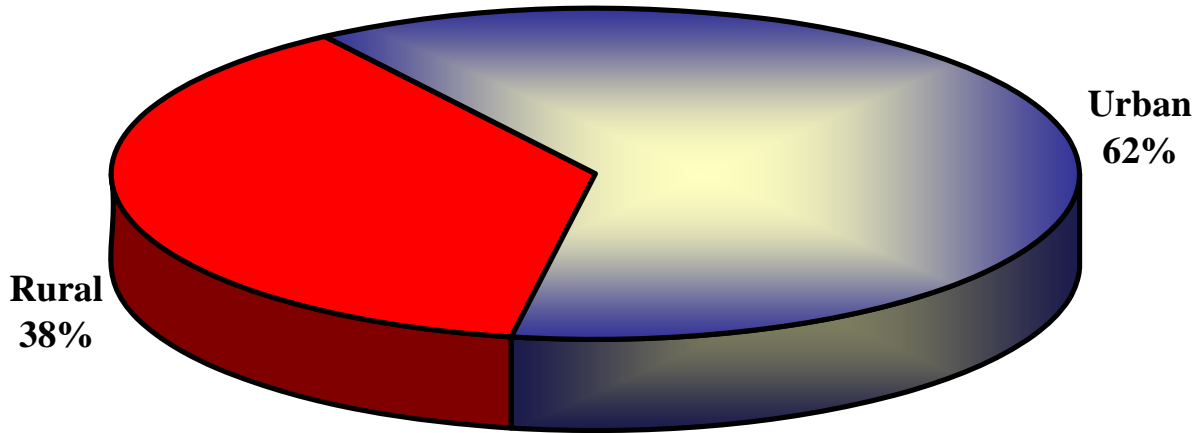
Operator Factor	Crash Severity					Total
	1	2	3	4	5	
None	293	1,180	5,820	17,687	28,454	53,434
Alcohol	38	154	571	396	599	1,758
Careless/Prohibited Driving	179	800	2,666	4,941	9,441	18,027
Crowded Off Roadway	1	6	51	101	142	301
Cutting In	0	1	8	60	101	170
Defective Brakes	0	10	39	120	200	369
Defective Lights	0	3	10	20	36	69
Disregarded Officer/Flagman	0	2	5	8	13	28
Disregarded Stop Sign	10	28	191	350	451	1,030
Disregarded Traffic Signal	9	23	274	518	754	1,578
Disregarded Yield Sign	0	2	3	7	15	27
Driving Without Lights	1	3	13	18	38	73
Drugs	0	13	45	33	46	137
Failure To Dim Headlights	1	0	5	8	13	27
Failure To Or Improper Signal	0	1	6	26	46	79
Failure To Yield	56	302	1,893	4,936	7,669	14,856
Following Too Close	20	141	673	3,570	5,348	9,752
Impeding Traffic	0	3	16	23	39	81
Improper Backing	0	2	28	557	1,265	1,852
Improper Lane Change	2	18	68	417	1,275	1,780
Improper Left Turn	1	24	100	326	537	988
Improper Passing	7	24	70	227	418	746
Improper Right Turn	0	3	37	169	422	631
Improperly Parked	4	7	4	26	46	87
Other Defective Equipment	8	34	110	135	246	533
Prohibited U Turn	2	6	6	20	42	76
Runaway Car/No Driver	0	0	0	0	0	0
Too Fast For Conditions	66	180	743	978	1,562	3,529
Wrong Side of Road	77	114	235	296	410	1,132
Wrong Way/One Way Traffic	2	3	18	35	60	118
Other	41	193	860	1,653	2,665	5,412
Unknown	95	128	767	1,933	3,839	6,762
Total	913	3,408	15,335	39,594	66,192	125,442

DRIVERS INVOLVED IN ALCOHOL/DRUG RELATED CRASHES BY OPERATOR FACTOR

Operator Factor	Crash Severity					Total
	1	2	3	4	5	
None	86	149	377	568	648	1,828
Alcohol	38	151	563	383	579	1,714
Careless/Prohibited Driving	71	139	307	227	409	1,153
Crowded off Roadway	0	0	1	1	0	2
Cutting In	0	1	1	1	2	5
Defective Brakes	0	0	0	6	3	9
Defective Lights	0	1	0	0	1	2
Disregarded Officer/Flagman	0	1	2	0	2	5
Disregarded Stop Sign	3	5	17	16	12	53
Disregarded Traffic Signal	1	3	13	16	19	52
Disregarded Yield Sign	0	2	0	1	0	3
Driving Without Lights	0	2	4	0	1	7
Drugs	0	13	39	32	44	128
Failure To Dim Headlights	0	0	0	1	0	1
Failure To or Improper Signal	0	0	0	1	0	1
Failure To Yield	11	16	77	99	110	313
Following Too Close	1	10	21	61	72	165
Impeding Traffic	0	1	0	1	0	2
Improper Backing	0	0	1	5	15	21
Improper Lane Change	0	1	4	3	14	22
Improper Left Turn	0	3	4	11	10	28
Improper Passing	0	3	1	9	7	20
Improper Right Turn	0	0	2	3	8	13
Improperly Parked	1	2	1	1	2	7
Other Defective Equipment	1	3	4	1	2	11
Prohibited U Turn	1	1	0	1	2	5
Too Fast For Conditions	30	24	65	36	42	197
Wrong Side of Road	30	27	41	20	25	143
Wrong Way/One Way Traffic	2	2	0	2	5	11
Other	9	11	40	34	39	133
Unknown	34	14	39	36	39	162
Total	319	585	1,624	1,576	2,112	6,216

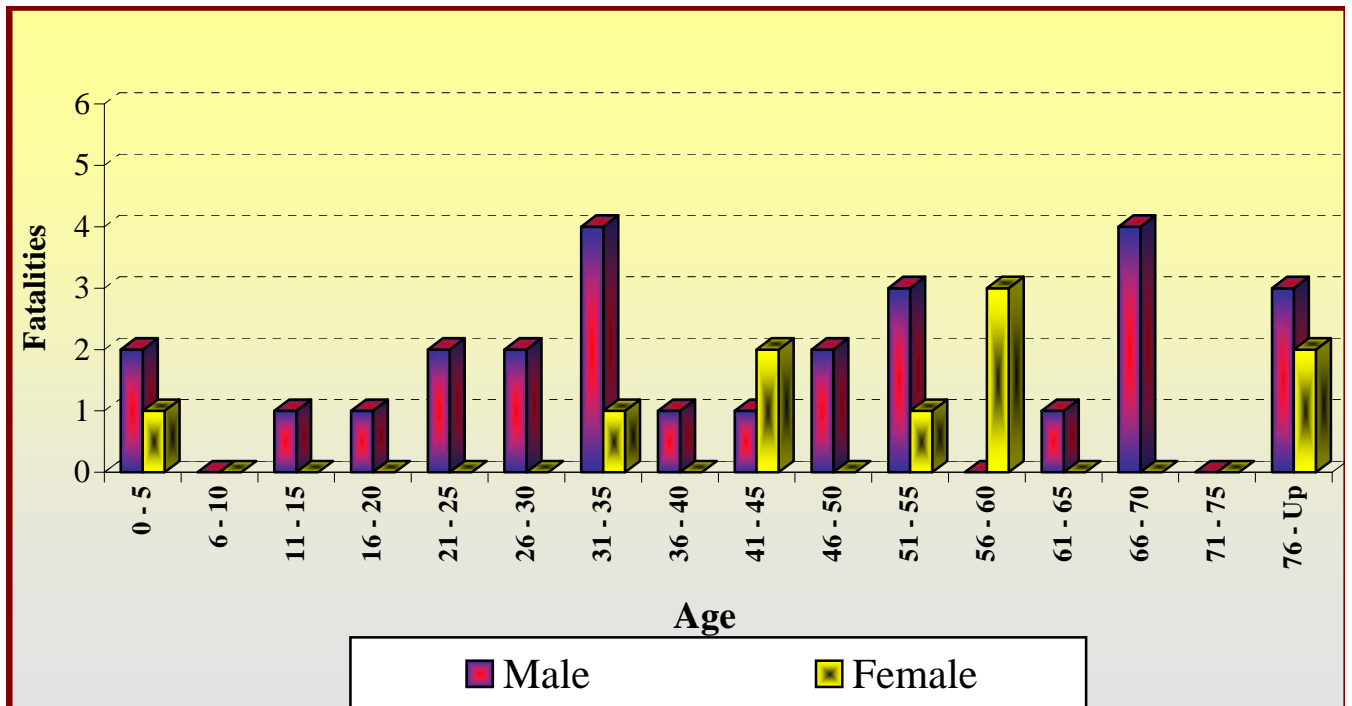
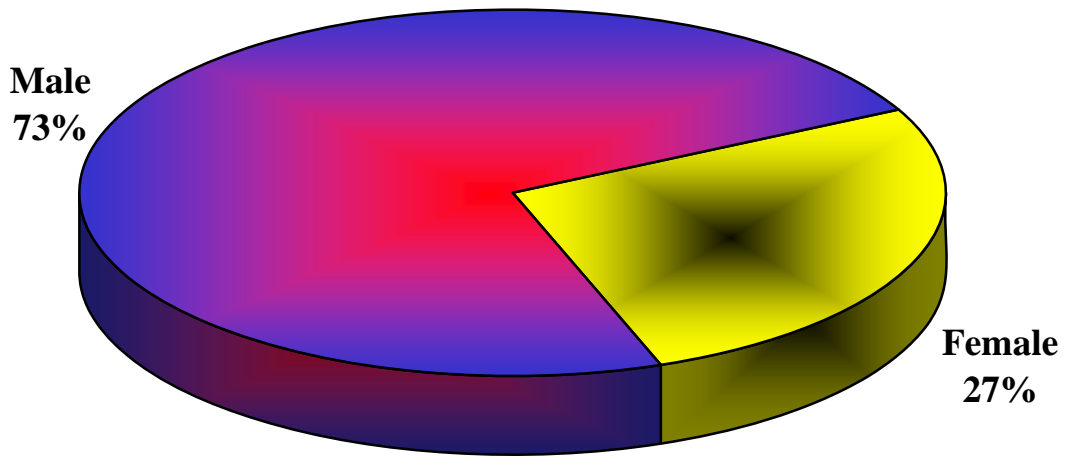
PEDESTRIAN FATALITIES

Rural	Urban	Daylight	Dark	Other
14	23	7	29	1



PEDESTRIAN FATALITIES (Cont.)

Male	Female	Total
27	10	37



ARKANSAS' 20 LARGEST CITIES BY POPULATION CRASHES, FATALITIES AND INJURIES

City	Fatal Crashes	Fatalities	Injury Crashes	Injuries	P.D.O. *	Total Crashes
Little Rock	20	21	2,991	5,794	3,812	6,823
Fort Smith	6	6	1,343	2,438	2,630	3,979
North Little Rock	6	7	1,239	2,145	2,626	3,871
Fayetteville	3	4	1,198	2,212	2,038	3,239
Jonesboro	6	6	907	1,773	1,579	2,492
Pine Bluff	1	1	1,044	2,448	840	1,885
Springdale	5	6	461	704	1,788	2,254
Conway	2	2	703	1,555	803	1,508
Rogers	6	6	540	1,037	688	1,234
Hot Springs	5	6	730	1,188	1,843	2,578
Jacksonville	1	1	242	492	298	541
West Memphis	2	2	343	680	568	913
Texarkana	7	7	400	846	425	832
Russellville	2	2	313	545	816	1,131
Paragould	4	4	499	1,136	433	936
Benton	1	1	250	414	428	679
El Dorado	3	3	406	928	442	851
Sherwood	3	3	222	418	309	534
Bentonville	3	3	473	935	934	1,410
Van Buren	3	3	330	741	280	613

* Property Damage Only

**ARKANSAS' 20 LARGEST CITIES
BY POPULATION
ALCOHOL AND OTHER DRUG RELATED
CRASHES, FATALITIES AND INJURIES**

City	Fatal Crashes	Fatalities	Injury Crashes	Injuries	P.D.O. * Crashes	Total Crashes
Little Rock	9	9	191	368	142	342
Fort Smith	1	1	85	166	73	159
North Little Rock	2	3	70	117	56	128
Fayetteville	1	2	118	203	87	206
Jonesboro	1	1	76	141	44	121
Pine Bluff	0	0	31	65	29	60
Springdale	4	5	46	67	104	154
Conway	1	1	38	69	11	50
Rogers	3	3	33	68	18	54
Hot Springs	1	1	41	71	42	84
Jacksonville	0	0	14	20	7	21
West Memphis	0	0	19	42	25	44
Texarkana	3	3	33	74	18	54
Russellville	1	1	20	30	14	35
Paragould	1	1	30	51	10	41
Benton	1	1	19	33	10	30
El Dorado	1	1	19	42	22	42
Sherwood	1	1	25	47	20	46
Bentonville	2	2	11	19	14	27
Van Buren	2	2	24	50	9	35

* Property Damage Only

TOTAL CRASHES, FATALITIES AND INJURIES BY COUNTY

County	Fatal Crashes	Fatalities	Injury Crashes	Injuries	P.D.O. Crashes	Total Crashes
ARKANSAS	4	4	302	679	130	436
ASHLEY	4	4	252	468	222	478
BAXTER	14	15	283	516	394	691
BENTON	28	29	2,180	4,405	2,395	4,603
BOONE	10	10	380	769	430	820
BRADLEY	3	3	140	281	34	177
CALHOUN			55	84	22	77
CARROLL	7	7	346	704	195	548
CHICOT	7	7	72	154	21	100
CLARK	4	7	141	234	261	406
CLAY	5	5	154	314	73	232
CLEBURNE	6	9	266	526	169	441
CLEVELAND	3	3	55	82	33	91
COLUMBIA	3	3	179	364	201	383
CONWAY	4	4	163	364	130	297
CRAIGHEAD	11	13	1,124	2,168	1,722	2,857
CRAWFORD	14	14	677	1,414	551	1,242
CRITTENDEN	13	15	636	1,285	794	1,443
CROSS	4	5	267	587	82	353
DALLAS	2	2	128	254	44	174
DESHA	3	3	141	299	61	205
DREW	4	4	183	383	127	314
FAULKNER	15	15	1,114	2,369	1,151	2,280
FRANKLIN	5	6	166	322	104	275
FULTON	5	7	66	114	37	108
GARLAND	25	28	1,388	2,449	2,205	3,618
GRANT	3	6	144	292	130	277
GREENE	10	10	527	1,195	453	990
HEMPSTEAD	5	7	293	541	322	620
HOT SPRING	18	21	439	899	189	646
HOWARD	2	2	101	199	86	189
INDEPENDENCE	6	7	551	1,085	584	1,141
IZARD	1	1	41	58	32	74
JACKSON	3	3	166	351	120	289
JEFFERSON	9	9	1,318	2,986	1,011	2,338
JOHNSON	8	9	280	563	208	496
LAFAYETTE	2	2	50	80	19	71
LAWRENCE	9	11	205	456	62	276

TOTAL CRASHES, FATALITIES AND INJURIES BY COUNTY (CONT.)

County	Fatal Crashes	Fatalities	Injury Crashes	Injuries	P.D.O. Crashes	Total Crashes
LEE	1	1	77	157	29	107
LINCOLN	7	7	67	120	75	149
LITTLE RIVER	3	3	80	120	89	172
LOGAN	9	10	119	213	133	261
LONOKE	16	18	594	1,134	698	1,308
MADISON	11	12	136	228	99	246
MARION	2	5	88	164	56	146
MILLER	13	16	478	1,045	506	997
MISSISSIPPI	11	11	503	976	455	969
MONROE	7	8	91	194	55	153
MONTGOMERY	6	6	104	183	36	146
NEVADA	2	2	86	149	92	180
NEWTON	2	2	67	89	44	113
OUACHITA	3	3	189	359	134	326
PERRY	4	5	50	84	31	85
PHILLIPS	4	5	304	800	120	428
PIKE	3	3	110	222	41	154
POINSETT	12	16	216	413	216	444
POLK	3	3	153	338	104	260
POPE	8	8	584	997	950	1,542
PRAIRIE	5	5	64	147	91	160
PULASKI	49	53	5,411	10,103	7,697	13,157
RANDOLPH	3	4	169	369	145	317
SALINE	17	17	887	1,897	917	1,821
SCOTT	5	5	117	231	69	191
SEARCY	4	4	90	170	19	113
SEBASTIAN	9	9	1,709	3,113	2,800	4,518
SEVIER	6	7	211	442	107	324
SHARP	8	9	175	346	74	257
ST. FRANCIS	10	11	297	644	164	471
STONE	5	5	99	186	74	178
UNION	17	18	569	1,227	525	1,111
VAN BUREN	9	9	138	316	42	189
WASHINGTON	16	17	2,321	4,201	4,150	6,487
WHITE	16	16	1,163	2,697	432	1,611
WOODRUFF			18	27	13	31
YELL	11	11	168	356	158	337
TOTALS	596	654	32,675	64,750	36,244	69,515

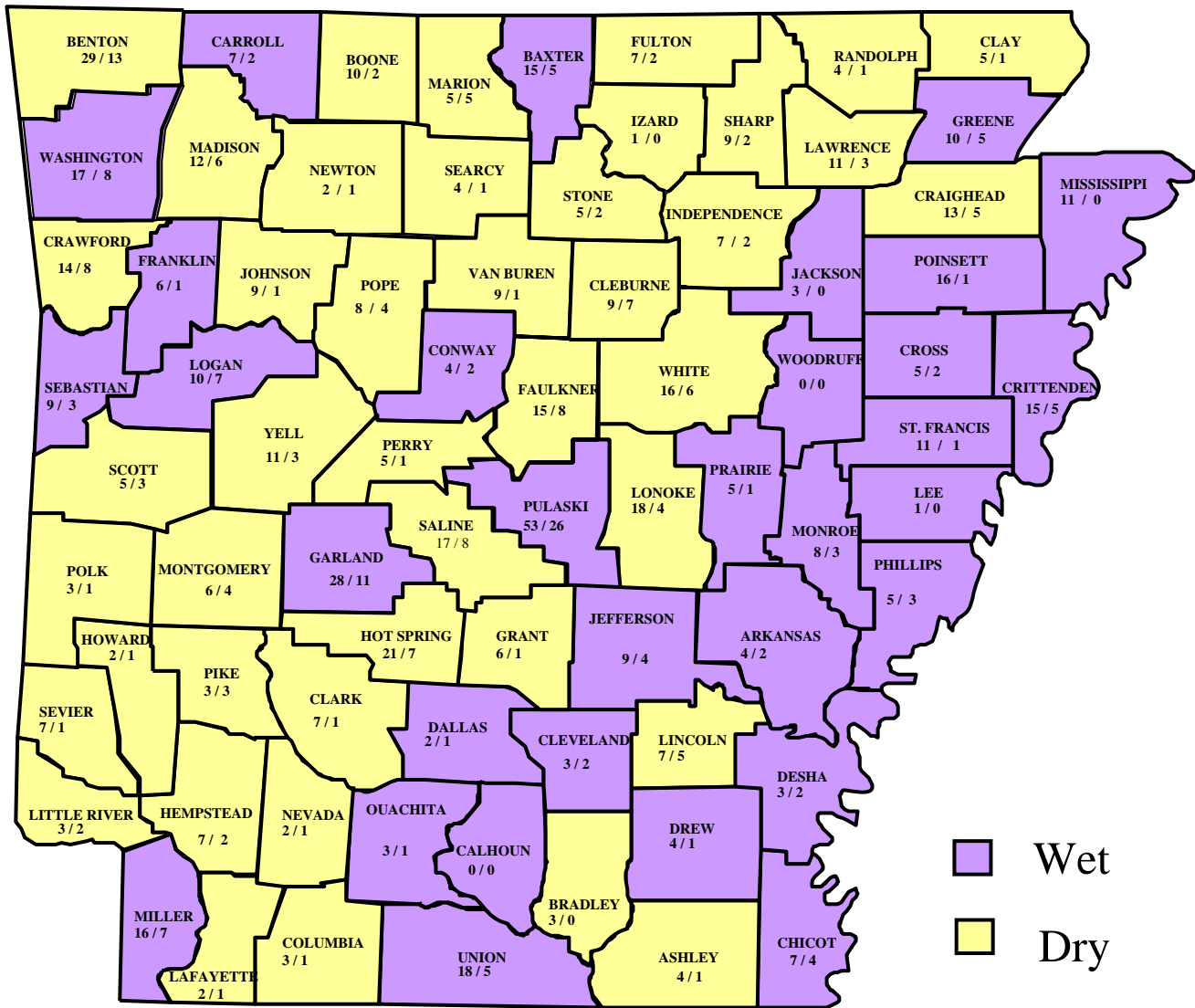
ALCOHOL/DRUG RELATED CRASHES, FATALITIES AND INJURIES BY COUNTY

County	Fatal Crashes	Fatalities	Injury Crashes	Injuries	P.D.O. Crashes	Total Crashes
ARKANSAS	2	2	20	39	5	27
ASHLEY	1	1	29	43	16	46
BAXTER	5	5	42	76	13	60
BENTON	12	13	160	272	72	244
BOONE	2	2	43	88	27	72
BRADLEY	0	0	6	9	2	8
CALHOUN	0	0	5	8	4	9
CARROLL	2	2	39	61	15	56
CHICOT	4	4	6	19	1	11
CLARK	1	1	16	22	3	20
CLAY	1	1	16	25	3	20
CLEBURNE	4	7	30	59	4	38
CLEVELAND	2	2	4	4	1	7
COLUMBIA	1	1	8	15	9	18
CONWAY	2	2	11	17	11	24
CRAIGHEAD	5	5	98	179	54	157
CRAWFORD	8	8	51	92	26	85
CRITTENDEN	5	5	46	97	39	90
CROSS	2	2	20	43	2	24
DALLAS	1	1	3	4	2	6
DESHA	2	2	17	30	3	22
DREW	1	1	22	43	5	28
FAULKNER	8	8	96	160	29	133
FRANKLIN	1	1	20	27	9	30
FULTON	1	2	8	14	2	11
GARLAND	10	11	113	185	71	194
GRANT	1	1	8	13	2	11
GREENE	5	5	36	69	11	52
HEMPSTEAD	2	2	26	42	12	40
HOT SPRING	5	7	24	35	11	40
HOWARD	1	1	10	16	4	15
INDEPENDENCE	2	2	53	89	24	79
IZARD	0	0	6	8	4	10
JACKSON	0	0	14	23	4	18
JEFFERSON	4	4	53	103	43	100
JOHNSON	1	1	21	30	13	35
LAFAYETTE	1	1	7	10	2	10
LAWRENCE	3	3	23	39	6	32

ALCOHOL/DRUG RELATED CRASHES, FATALITIES AND INJURIES BY COUNTY (CONT.)

County	Fatal Crashes	Fatalities	Injury Crashes	Injuries	P.D.O. Crashes	Total Crashes
LEE	0	0	10	23	3	13
LINCOLN	5	5	8	16	3	16
LITTLE RIVER	2	2	12	17	3	17
LOGAN	6	7	10	17	8	24
LONOKE	4	4	52	79	31	87
MADISON	5	6	11	17	10	26
MARION	2	5	15	21	5	22
MILLER	6	7	44	126	25	75
MISSISSIPPI	0	0	47	72	19	66
MONROE	2	3	3	7	2	7
MONTGOMERY	4	4	14	23	3	21
NEVADA	1	1	8	9	3	12
NEWTON	1	1	12	17	4	17
OUACHITA	1	1	23	39	8	32
PERRY	1	1	8	12	4	13
PHILLIPS	2	3	15	42	1	18
PIKE	3	3	11	18	2	16
POINSETT	1	1	20	35	21	42
POLK	1	1	10	16	3	14
POPE	4	4	63	89	25	92
PRAIRIE	1	1	13	29	6	20
PULASKI	23	26	376	678	265	664
RANDOLPH	1	1	13	24	8	22
SALINE	8	8	68	111	36	112
SCOTT	3	3	14	17	2	19
SEARCY	1	1	7	18	2	10
SEBASTIAN	3	3	109	202	78	190
SEVIER	1	1	22	44	4	27
SHARP	2	2	12	20	3	17
ST. FRANCIS	1	1	15	25	5	21
STONE	2	2	14	30	7	23
UNION	5	5	40	84	28	73
VAN BUREN	1	1	12	22	5	18
WASHINGTON	7	8	225	371	198	430
WHITE	6	6	62	129	8	76
WOODRUFF	0	0	3	4	0	3
YELL	3	3	13	26	13	29
TOTALS	227	247	2,624	4,637	1,415	4,266

TOTAL FATALITIES VS. ALCOHOL/DRUG RELATED FATALITIES BY COUNTY



County	Number of Counties	Total Fatalities	Alcohol/Drug Related Fatalities	% Alcohol/Drug Related
Wet	32	308	115	37%
Dry	43	346	132	38%