

ARKANSAS 2006 HIGHWAY TRAFFIC CRASH STATISTICS



**Prepared by the Arkansas State Police Highway Safety Office
One State Police Plaza Drive, Little Rock, Arkansas 72209**

TABLE OF CONTENTS

INTRODUCTION

2006 ARKANSAS CRASH SUMMARY.....	2
----------------------------------	---

FIVE AND TEN YEAR TRENDS

FATAL CRASHES AND RATES.....	3
FATALITIES AND RATES.....	4
FATALITIES BY AGE GROUP, 2002-2006.....	5
NONFATAL INJURIES, RATES AND INJURIES BY SEVERITY.....	6 - 7
TOTAL CRASHES AND RATES.....	8
ALCOHOL/DRUG RELATED FATALITIES VS. TOTAL FATALITIES.....	9
PERCENT ALCOHOL/DRUG RELATED FATALITIES ARKANSAS VS. NATIONAL.....	10
ALCOHOL/DRUG RELATED CRASHES VS. TOTAL CRASHES.....	11
ALCOHOL/DRUG RELATED FATAL CRASHES VS. TOTAL FATAL CRASHES.....	12
MOTORCYCLE CRASHES.....	13
RAILROAD CRASHES, FATALITIES AND INJURIES.....	14

CURRENT YEAR (2006)

FATALITIES BY SAFETY RESTRAINT USAGE	
PERCENT USED AND NOT USED.....	15
FATALITIES BY SAFETY RESTRAINT USAGE BY AGE GROUP.....	16
FATALITIES BY SAFETY RESTRAINT USAGE BY AGE.....	17
FATALITIES BY AGE AND PERSON TYPE.....	18
ALCOHOL/DRUG RELATED FATALITIES BY AGE AND PERSON TYPE.....	19
FATAL CRASHES AND FATALITIES BY MONTH.....	20
CRASHES BY TIME OF DAY AND DAY OF WEEK.....	21
ALCOHOL/DRUG RELATED CRASHES BY TIME OF DAY AND	
DAY OF WEEK.....	22
FATAL CRASHES BY TIME OF DAY AND DAY OF WEEK.....	23
ALCOHOL/DRUG RELATED FATAL CRASHES BY TIME OF DAY AND	
DAY OF WEEK.....	24
CRASHES BY LIGHTING CONDITIONS.....	25
CRASHES BY ROAD SURFACE CONDITIONS.....	26
CRASHES BY ROAD SYSTEM.....	27
CRASH RATES BY ROAD SYSTEM.....	28
CRASHES BY RURAL/URBAN LOCATION.....	29
CRASHES BY INVESTIGATING AGENCY.....	30
CRASHES BY TYPE OF COLLISION.....	31
VEHICLES INVOLVED BY FIRST HARMFUL EVENT.....	32
DRIVERS BY OPERATOR FACTOR.....	33
DRIVERS IN ALCOHOL/DRUG RELATED CRASHES BY OPERATOR FACTOR.....	34
PEDESTRIAN FATALITIES.....	35 - 36
ARKANSAS' 20 LARGEST CITIES BY POPULATION -	
CRASHES, FATALITIES AND INJURIES.....	37
ARKANSAS' 20 LARGEST CITIES BY POPULATION -	
ALCOHOL & OTHER DRUG RELATED CRASHES, FATALITIES AND INJURIES.....	38

COUNTY BREAKDOWNS

TOTAL CRASHES, FATALITIES AND INJURIES BY COUNTY.....	39 - 40
ALCOHOL/DRUG RELATED	
CRASHES, FATALITIES AND INJURIES BY COUNTY.....	41 - 42
FATALITIES VS. ALCOHOL/DRUG RELATED FATALITIES BY COUNTY.....	43

2006 ARKANSAS CRASH SUMMARY

- **On all public roads in Arkansas during 2006 there were:**

67,485 total crashes reported, a 2.9% decrease from 2005

596 fatal crashes reported, no change from 2005

665 fatalities reported, a 1.7% increase from 2005

307 alcohol/drug related fatalities, an 24.3% increase from 2005

32.0 billion vehicle miles traveled, a 2.5 % increase from 2005

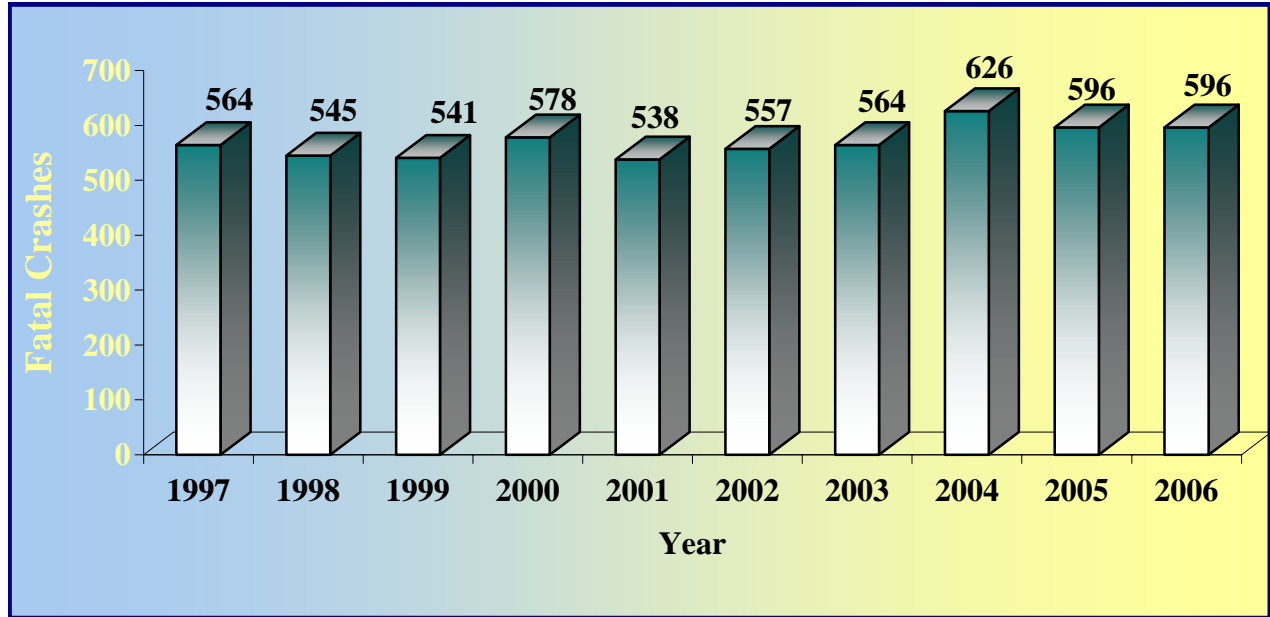
- **The fatality rate remained the same in 2006 at 2.1 fatalities per 100 MVM* traveled.**
- **The fatal crash rate remained the same in 2006 at 1.9 per 100 MVM* traveled.**

* Million vehicle miles

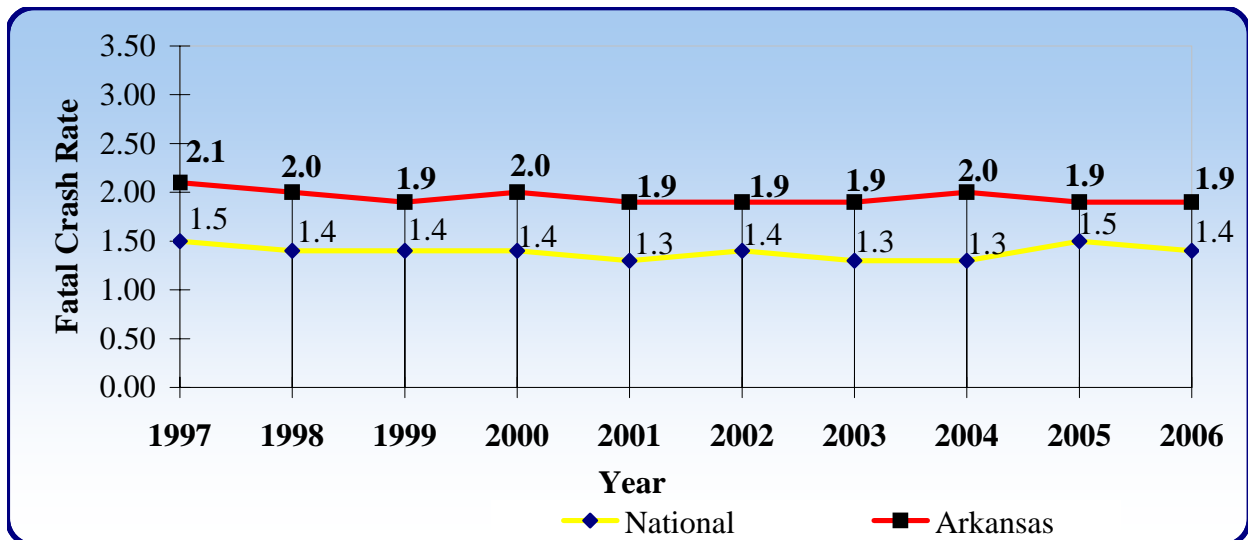
FATAL CRASHES AND RATES

10 YEAR TRENDS

STATEWIDE FATAL CRASHES



FATAL CRASH RATE (FATAL CRASHES PER 100 MVM*)

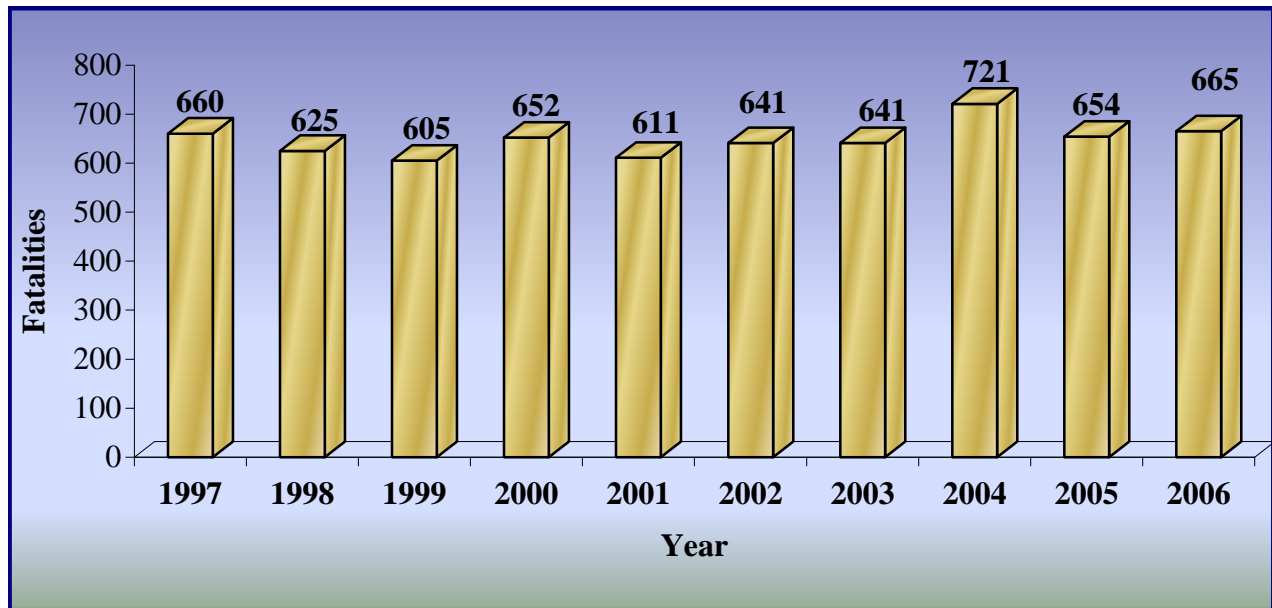


* Million vehicle miles

FATALITIES AND RATES

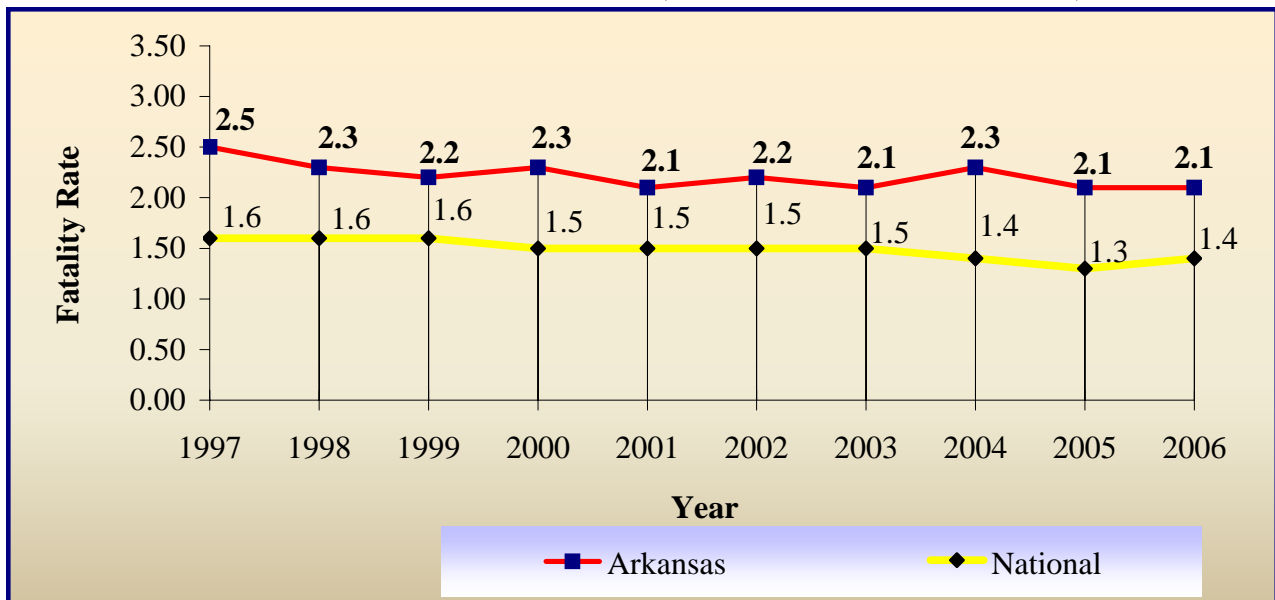
10 YEAR TRENDS

STATEWIDE FATALITIES



FATALITY RATE (FATALITIES PER 100 MVM*)

ARKANSAS FATALITY RATE (FATALITIES PER 100 MVM*)

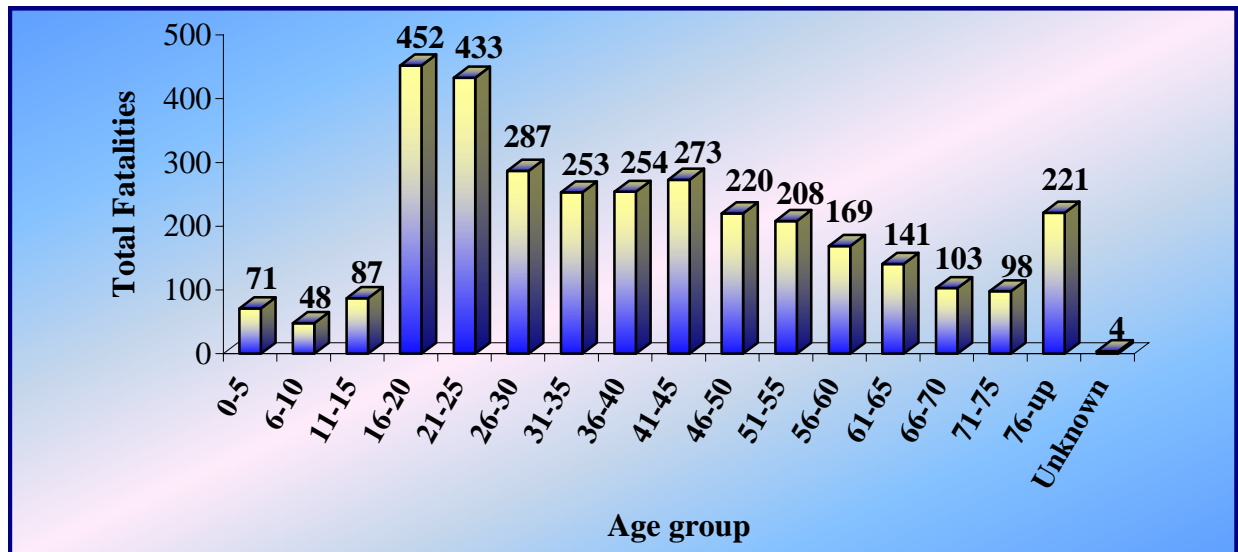


* Million vehicle miles

FATALITIES BY AGE GROUP, 2002-2006

5 YEAR TRENDS

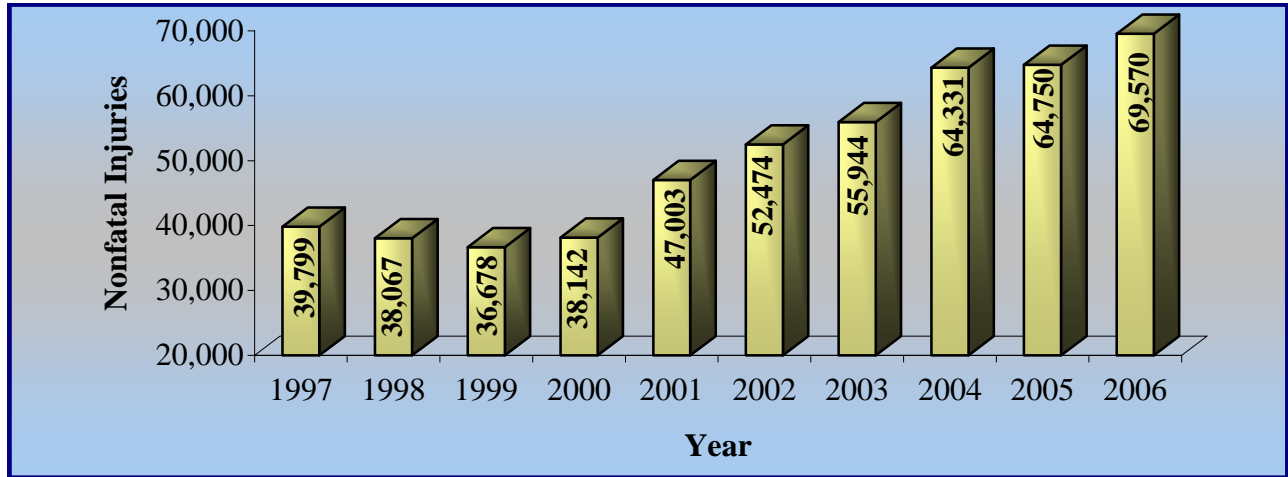
Age Group	2002	2003	2004	2005	2006	Total Fatalities
0-5	14	17	13	10	17	71
6-10	6	11	17	5	9	48
11-15	19	18	21	15	14	87
16-20	91	77	101	86	97	452
21-25	85	86	87	87	88	433
26-30	63	47	65	51	61	287
31-35	50	44	51	54	54	253
36-40	57	56	50	41	50	254
41-45	46	59	63	44	61	273
46-50	40	41	66	42	31	220
51-55	36	46	42	42	42	208
56-60	22	35	29	40	43	169
61-65	30	28	21	33	29	141
66-70	14	19	22	30	18	103
71-75	29	11	18	23	17	98
76-up	39	46	54	49	33	221
Unknown	0	0	1	2	1	4
Total	641	641	721	654	665	3,322



NONFATAL INJURIES AND RATES

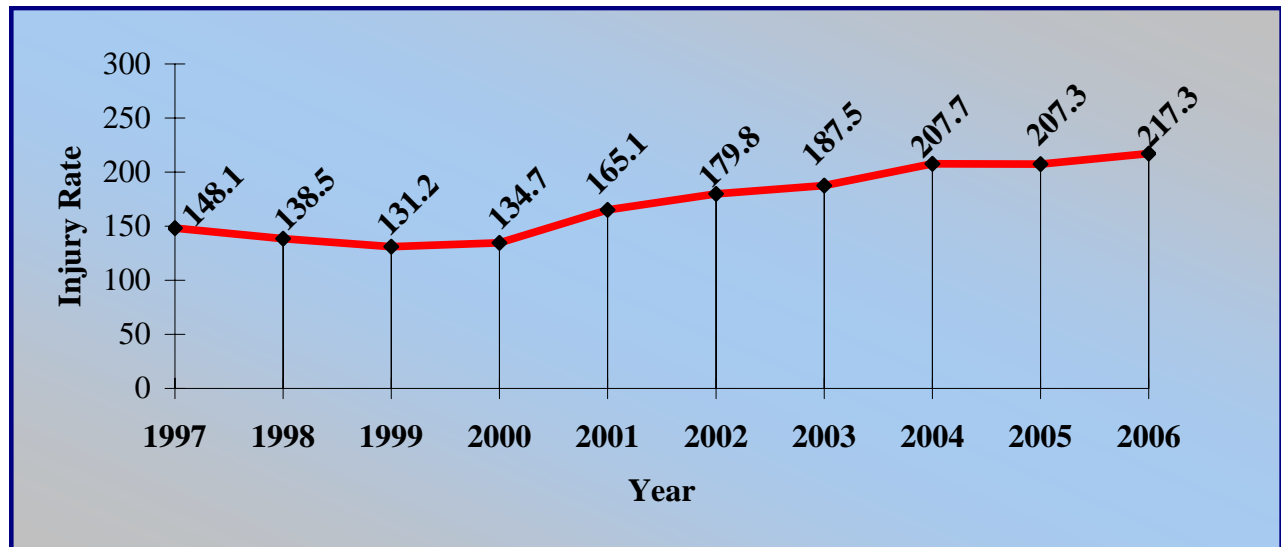
10 YEAR TRENDS

STATEWIDE NONFATAL INJURIES



Note: The greatest increase in total number of nonfatal injuries in 2001 thru 2005 is due to an increase in police reported possible injuries.

INJURY RATE (INJURIES PER 100 MVM*)

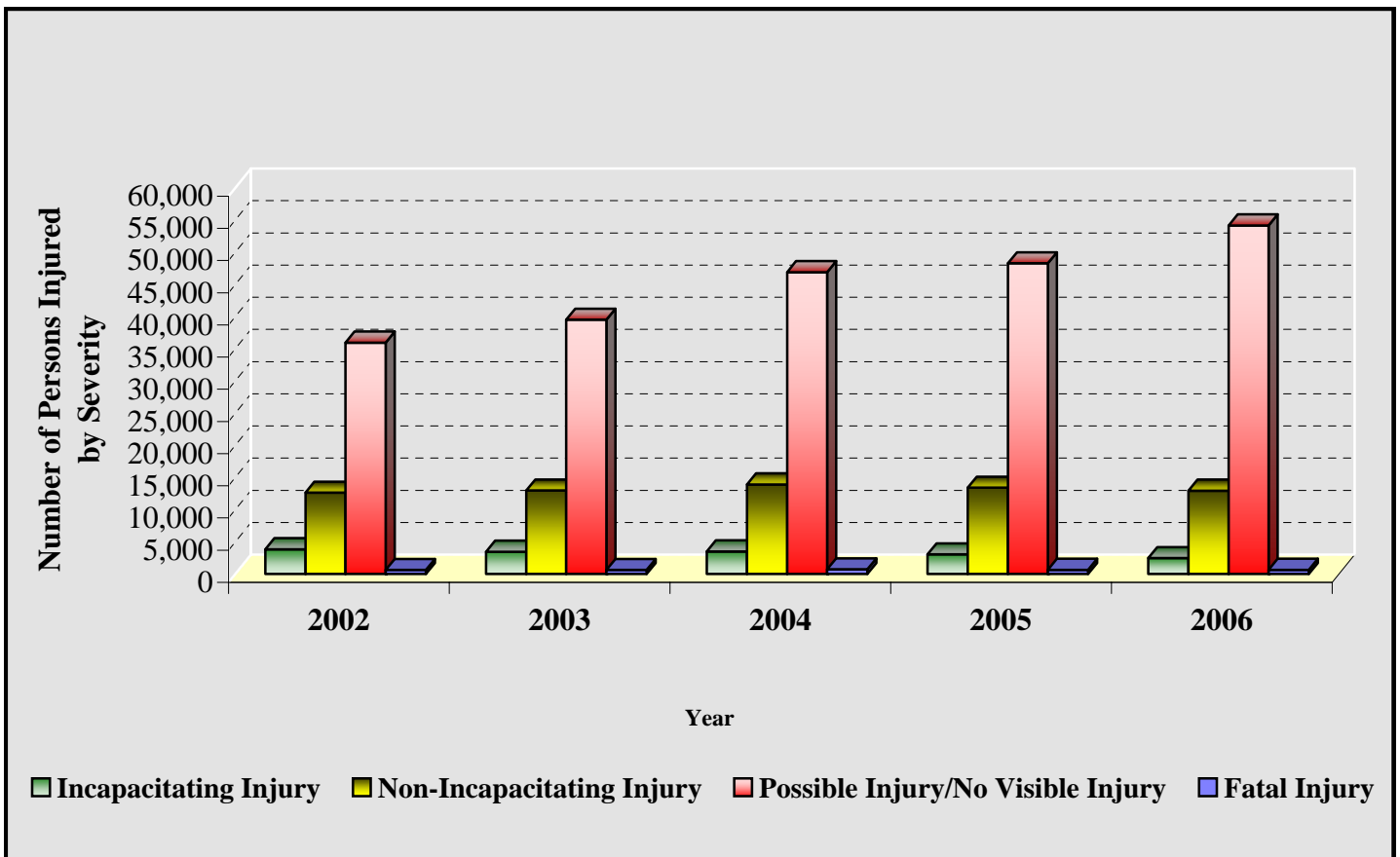


* Million vehicle miles

PERSONS INVOLVED IN CRASHES BY INJURY SEVERITY

5 YEAR TREND

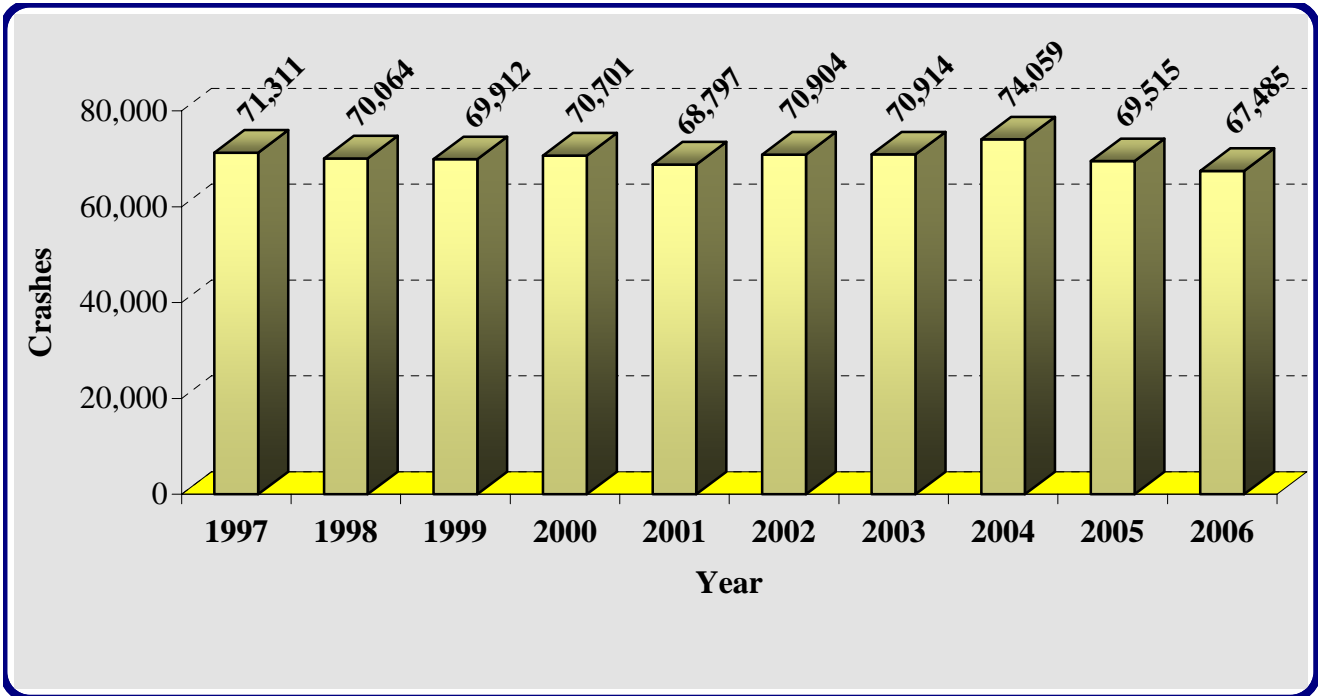
Injury Description	Number of Persons				
	2002	2003	2004	2005	2006
Fatal Injury	641	641	721	654	665
Incapacitating Injury	3,856	3,462	3,508	3,059	2,461
Non-Incapacitating Injury	12,648	12,977	13,927	13,414	12,953
Possible Injury/No Visible Injury	35,966	39,505	46,896	48,277	54,156
No Injury/Property Damage Only	137,185	130,545	131,148	118,396	106,378



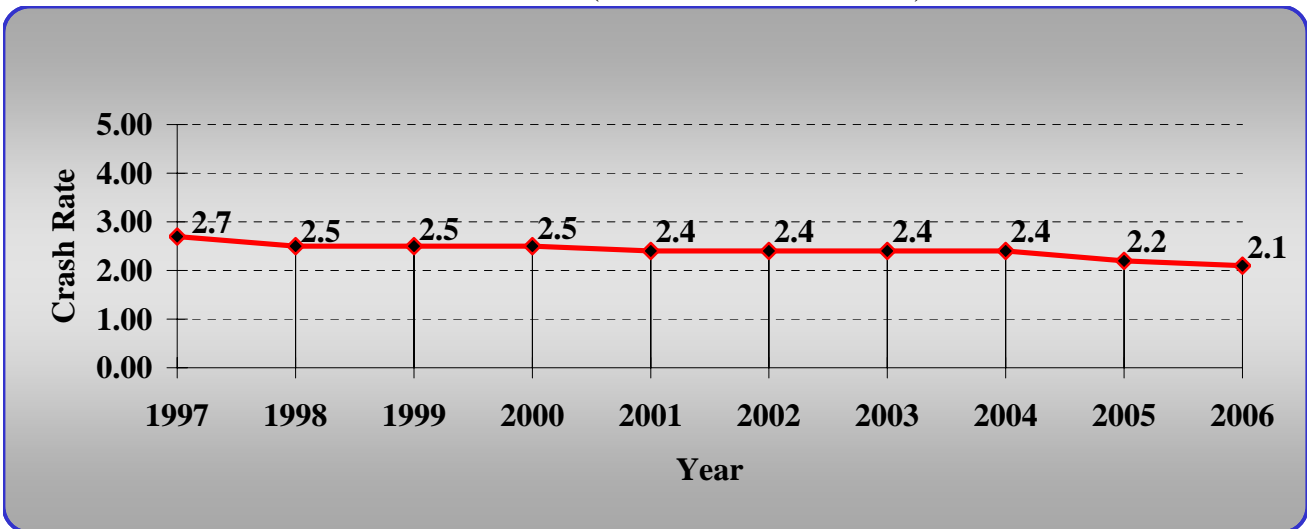
TOTAL CRASHES AND RATES

10 YEAR TRENDS

STATEWIDE CRASHES



CRASH RATE (CRASHES PER MVM*)

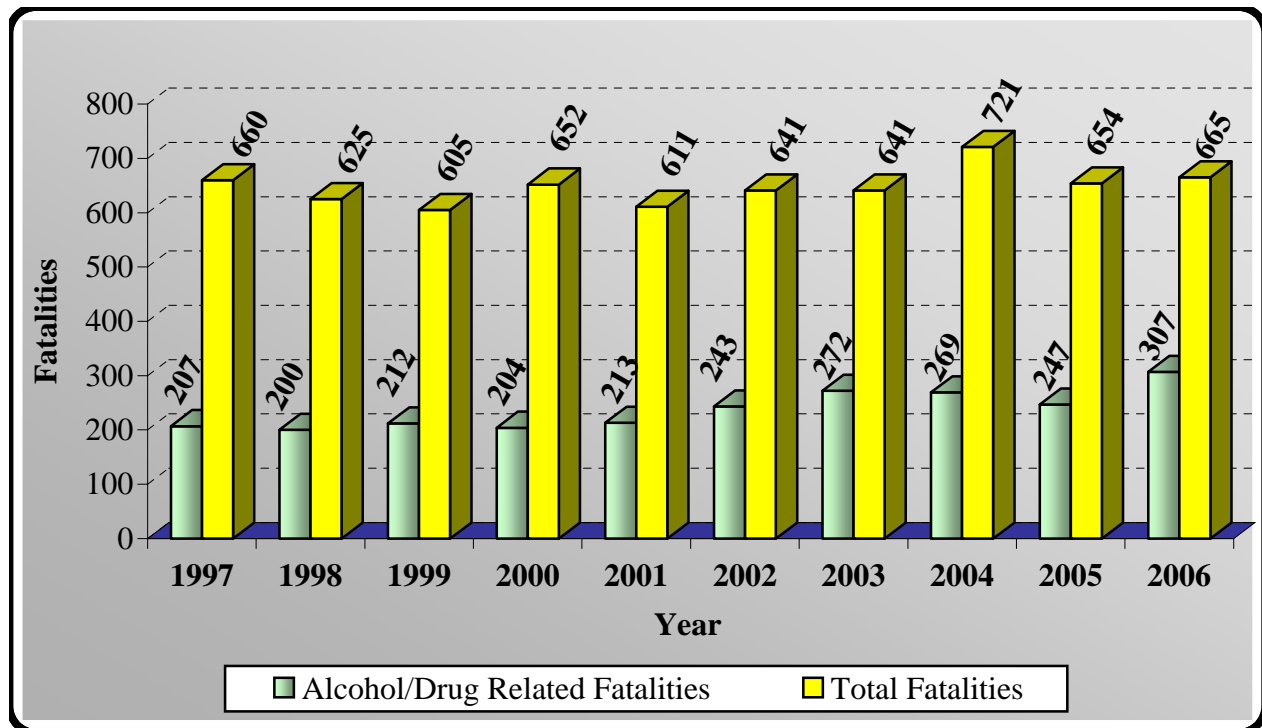


* Million vehicle miles

ALCOHOL/DRUG RELATED FATALITIES VS. TOTAL FATALITIES

10 YEAR TRENDS

Year	Alcohol/Drug Related Fatalities	Total Fatalities	Alcohol/Drug Fatalities as a % of Total
1997	207	660	31%
1998	200	625	32%
1999	212	605	35%
2000	204	652	31%
2001	213	611	35%
2002	243	641	38%
2003	272	641	42%
2004	269	721	37%
2005	247	654	38%
2006	307	665	46%

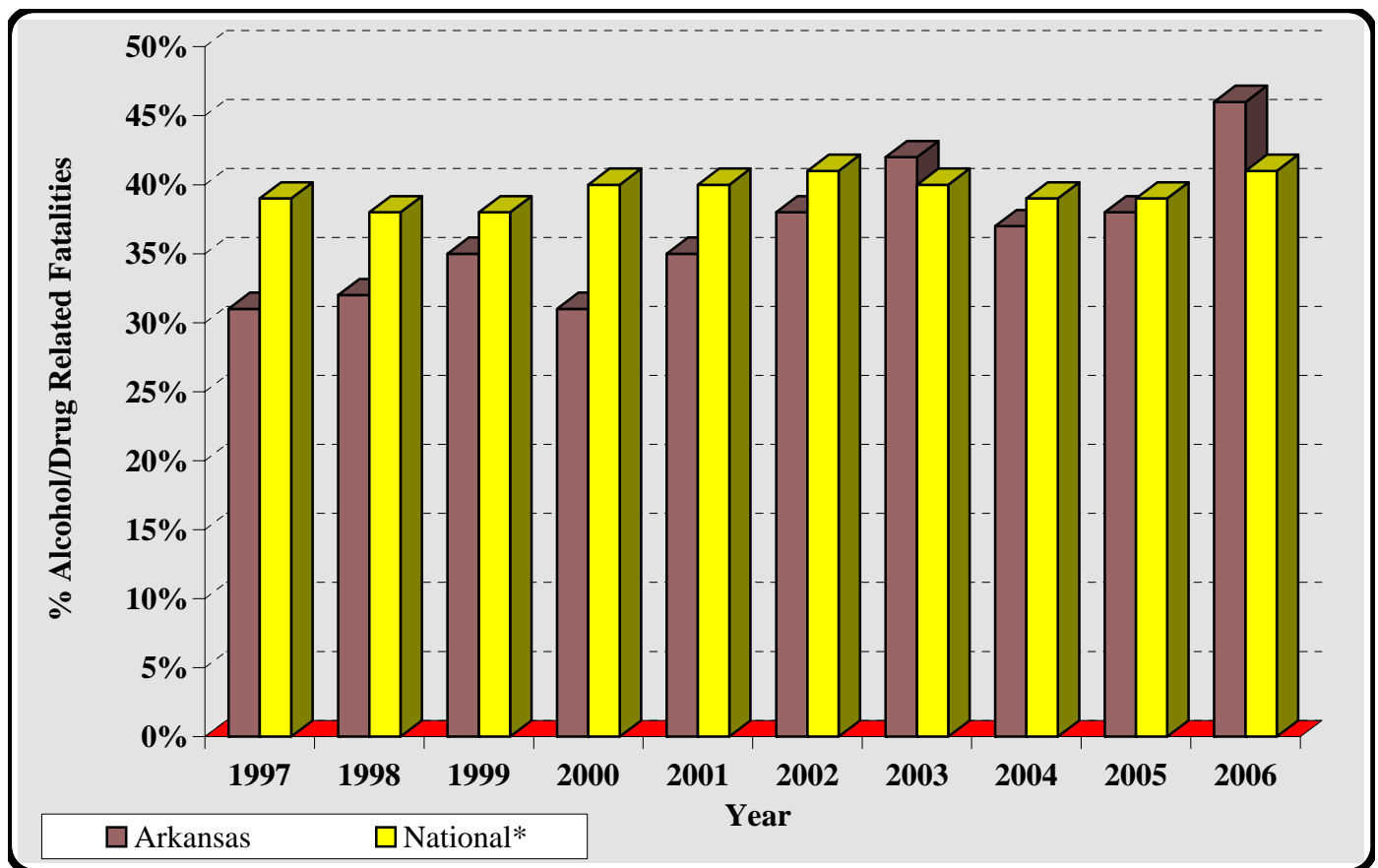


PERCENT ALCOHOL/DRUG RELATED FATALITIES ARKANSAS VS. NATIONAL

10 YEAR TRENDS

Year	Arkansas	National*
1997	31%	39%
1998	32%	38%
1999	35%	38%
2000	31%	40%
2001	35%	40%
2002	38%	41%
2003	42%	40%
2004	37%	39%
2005	38%	39%
2006	46%	41%

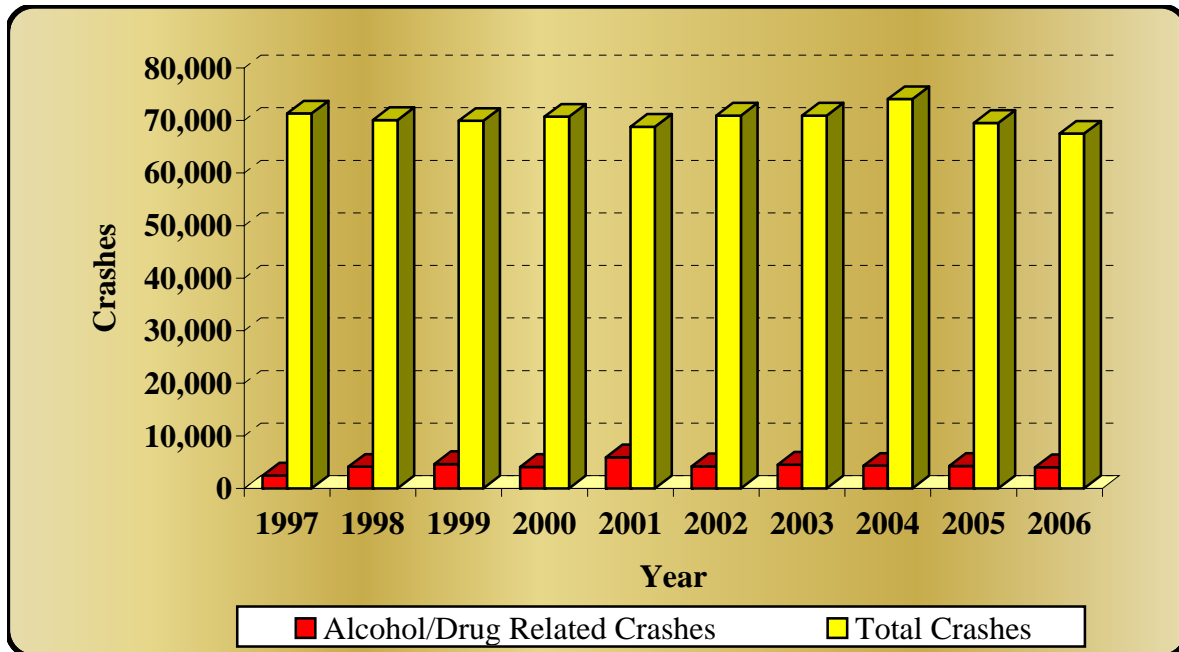
* Note: National figures represent alcohol related only.



ALCOHOL/DRUG RELATED CRASHES VS. TOTAL CRASHES

10 YEAR TRENDS

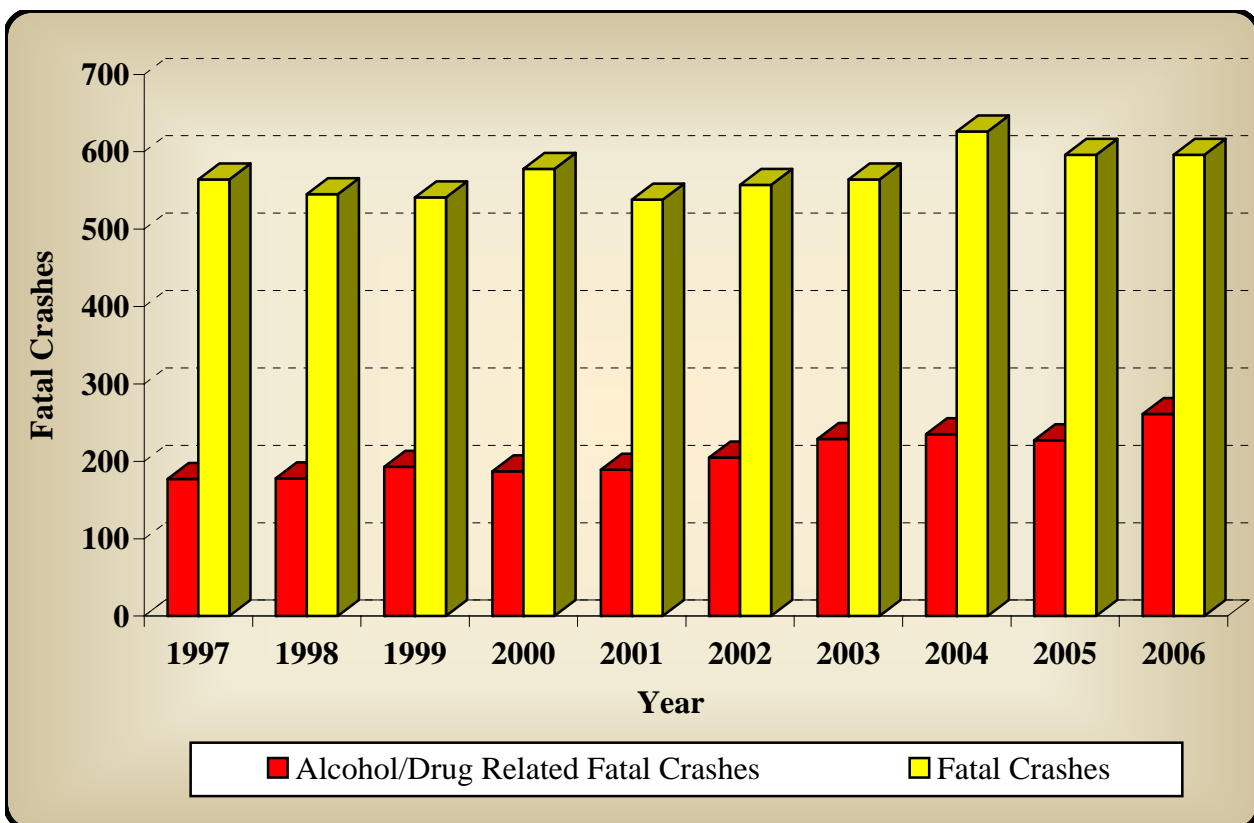
Year	Alcohol/Drug Related Crashes	Total Crashes	Alcohol/Drug as a % of Total Crashes
1997	2,452	71,311	3%
1998	4,125	70,064	6%
1999	4,645	69,912	7%
2000	4,097	70,701	6%
2001	5,912	68,797	9%
2002	4,203	70,904	6%
2003	4,503	70,914	6%
2004	4,293	74,059	6%
2005	4,266	69,515	6%
2006	4,029	67,485	6%



ALCOHOL/DRUG RELATED FATAL CRASHES VS. TOTAL FATAL CRASHES

10 YEAR TRENDS

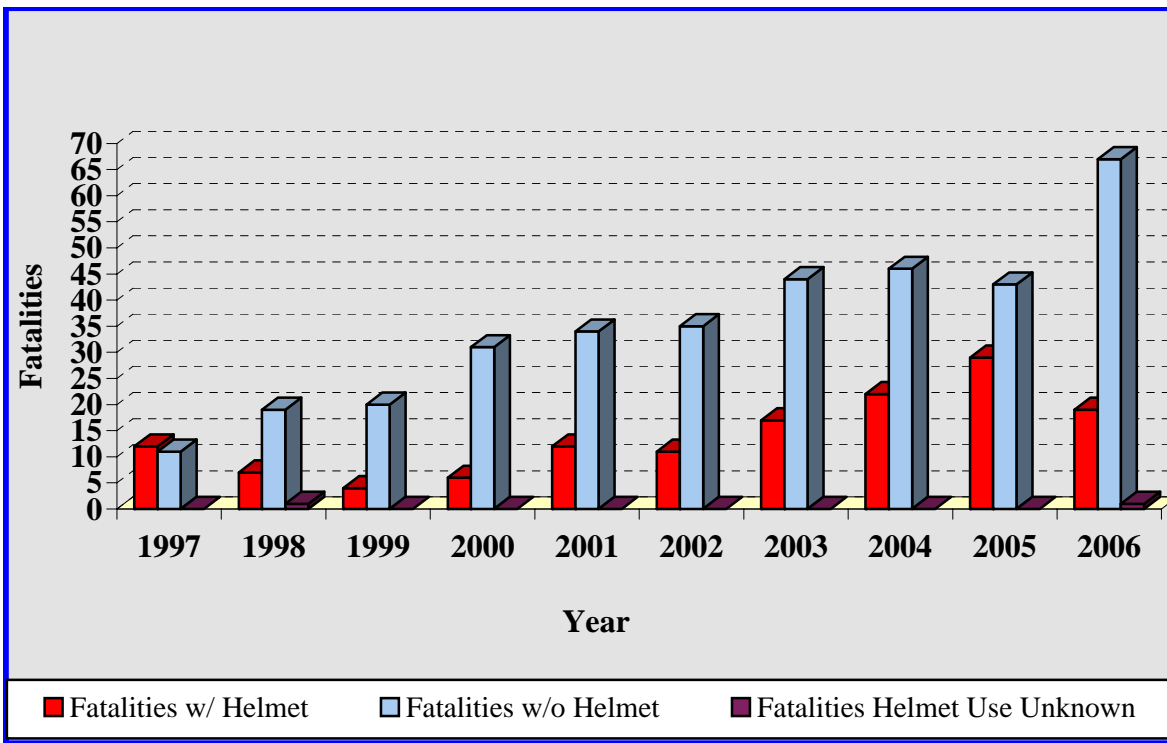
Year	Alcohol/Drug Related Fatal Crashes	Fatal Crashes	Alcohol/Drug Fatal Crashes as a % of Total
1997	177	564	31%
1998	178	545	33%
1999	193	541	36%
2000	187	578	32%
2001	189	538	35%
2002	205	557	37%
2003	229	564	41%
2004	235	626	37%
2005	227	596	38%
2006	261	596	44%



MOTORCYCLE CRASHES

10 YEAR TRENDS

Year	Total Crashes	Non Fatal Injuries	Fatal Crashes	Total Fatalities	Fatalities w/ Helmet	Fatalities w/o Helmet	Fatalities Helmet Use Unknown
1997	571	499	23	23	12	11	0
1998	625	541	26	27	7	19	1
1999	647	588	23	24	4	20	0
2000	871	744	37	37	6	31	0
2001	1,032	919	41	46	12	34	0
2002	1,041	979	46	46	11	35	0
2003	1,117	1,002	57	61	17	44	0
2004	1,403	1,360	66	68	22	46	0
2005	1,706	1,590	72	72	29	43	0
2006	1,698	1,584	83	87	19	67	1

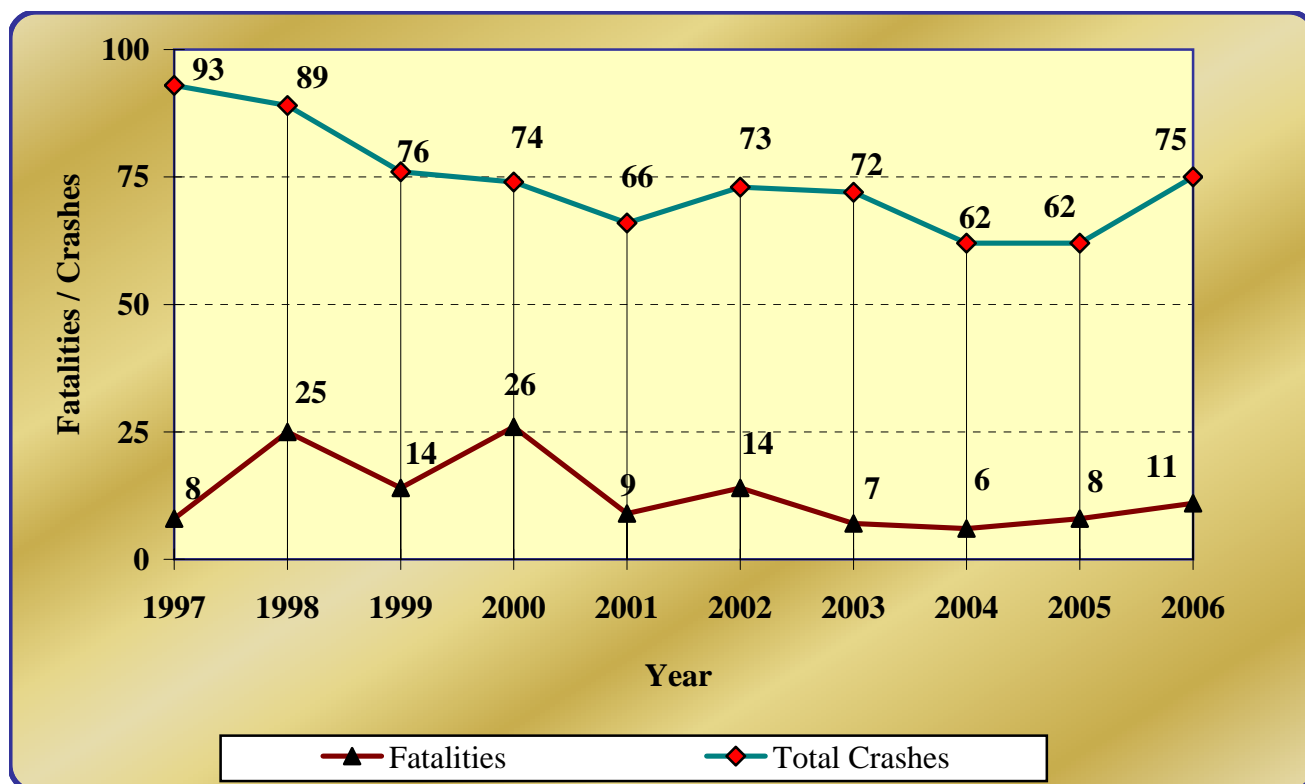


RAILROAD CRASHES, FATALITIES AND INJURIES

10 YEAR TRENDS

Year	Fatal Crashes	Nonfatal Injury Crashes	P.D.O. * Crashes	Total Crashes	Fatalities	Nonfatal Injuries
1997	7	37	49	93	8	48
1998	20	30	39	89	25	49
1999	12	25	39	76	14	40
2000	17	21	36	74	26	36
2001	9	25	32	66	9	36
2002	13	30	30	73	14	42
2003	5	32	35	72	7	41
2004	6	25	31	62	6	33
2005	6	26	30	62	8	37
2006	11	30	34	75	11	45

* Property Damage Only

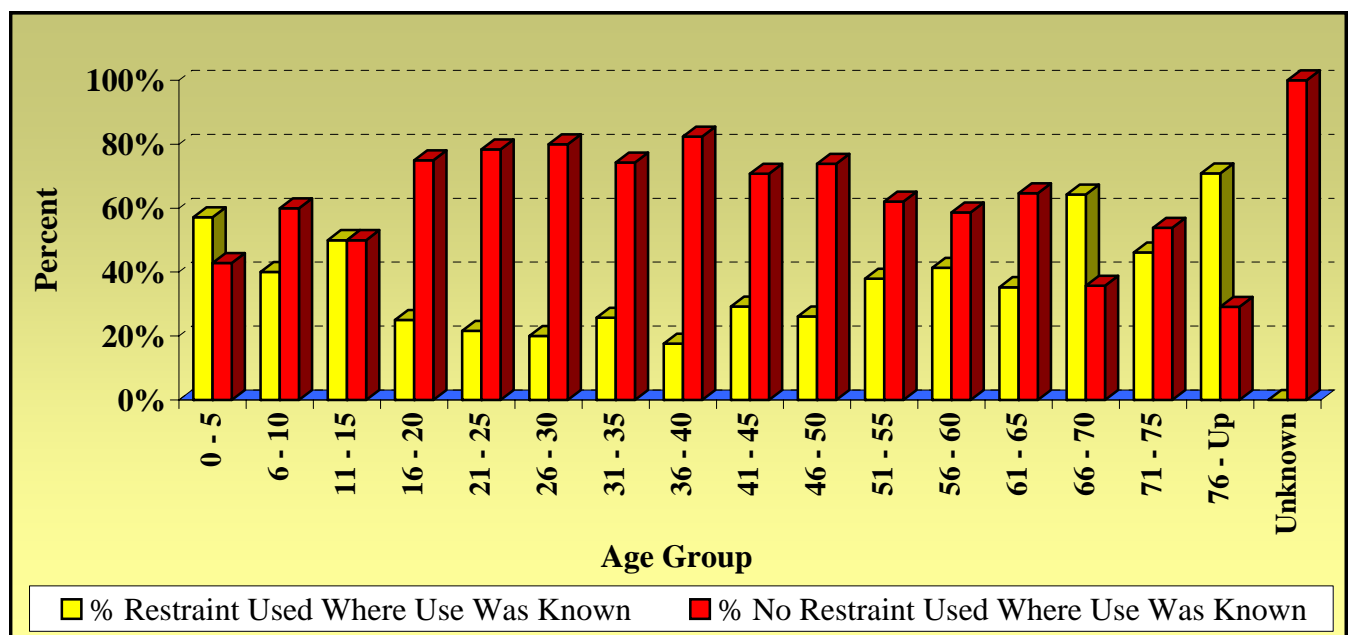


FATALITIES BY SAFETY RESTRAINT USAGE, PERCENT USED AND NOT USED

(Non-Motorist and Motorcycle Fatalities not included)

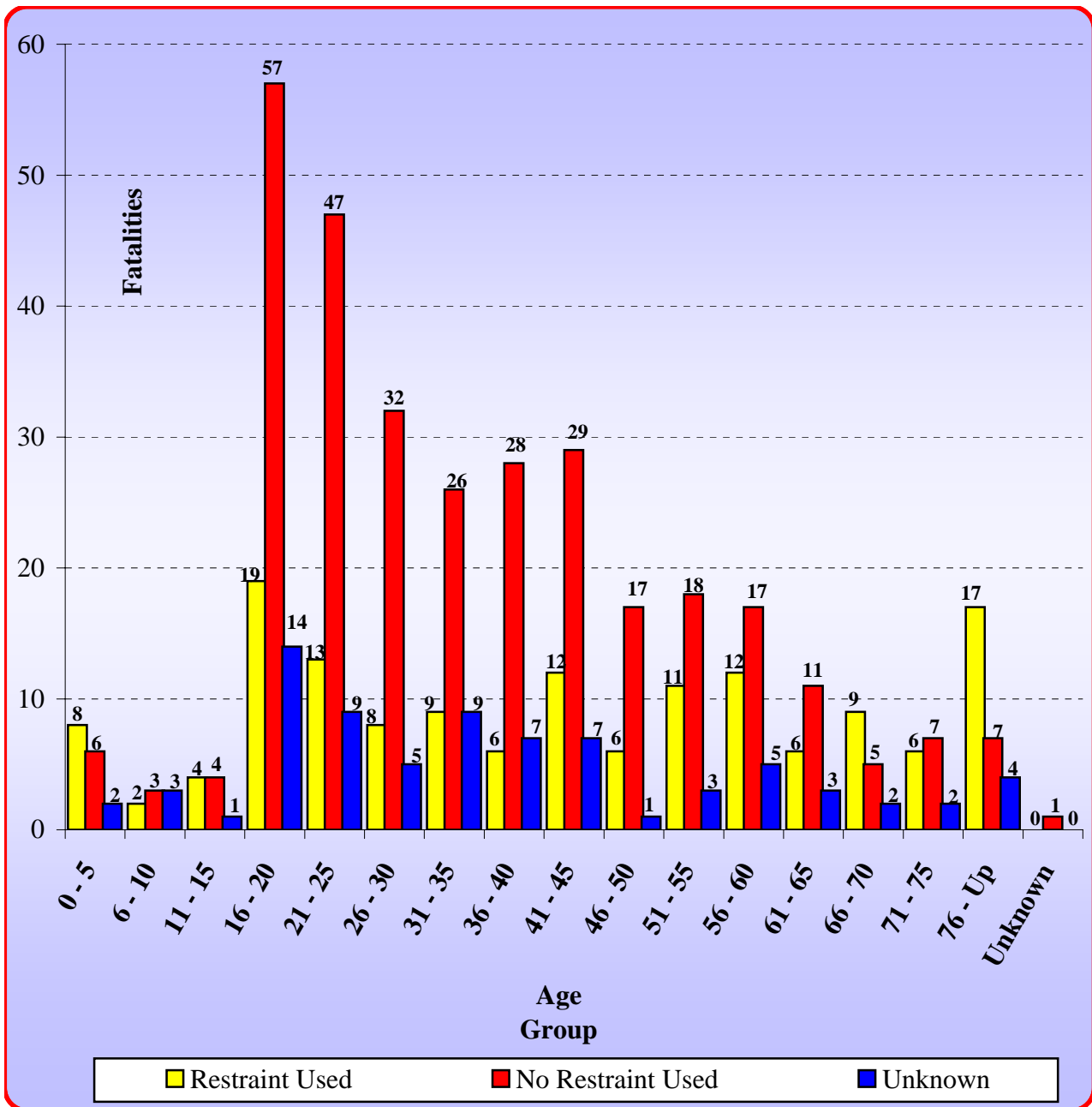
Age Group	Restraint Used	No Restraint Used	Unknown	% Restraint Used *	% No Restraint Used *
0 - 5	8	6	2	57%	43%
6 - 10	2	3	3	40%	60%
11 - 15	4	4	1	50%	50%
16 - 20	19	57	14	25%	75%
21 - 25	13	47	9	22%	78%
26 - 30	8	32	5	20%	80%
31 - 35	9	26	9	26%	74%
36 - 40	6	28	7	18%	82%
41 - 45	12	29	7	29%	71%
46 - 50	6	17	1	26%	74%
51 - 55	11	18	3	38%	62%
56 - 60	12	17	5	41%	59%
61 - 65	6	11	3	35%	65%
66 - 70	9	5	2	64%	36%
71 - 75	6	7	2	46%	54%
76 - Up	17	7	4	71%	29%
Unknown	0	1	0	0%	100%
Total	148	315	77	32%	68%

* Percentage calculated using only fatalities where restraint use was known.



FATALITIES BY SAFETY RESTRAINT USAGE BY AGE GROUP

(Motorcyclists and non-motorists are excluded.)



FATALITIES BY SAFETY RESTRAINT BY AGE

(Motorcyclists and non-motorists are excluded.)

Age	None Used	Child Safety Seat	Lap And/Or Shoulder Belt	Unknown	AGE	None Used	Child Safety Seat	Lap And/Or Shoulder Belt	Unknown
1	2	5	0	0	45	9	0	1	2
2	1	0	0	0	46	6	0	1	0
3	1	0	0	1	47	3	0	2	0
4	2	0	0	0	48	3	0	2	0
5		0	0	1	49	4	0	0	1
6	1	1	1	1	50	1	0	1	0
7		0	0	1	51	4	0	2	1
8	1	0	1	0	52	2	0	0	2
9	1	0	0	1	53	7	0	2	0
11	0	0	0	1	54	2	0	4	0
12	0	0	1	0	55	3	0	3	0
13	0	0	2	0	56	3	0	3	0
14	1	0	1	0	57	2	0	3	0
15	3	0	0	0	58	3	0	3	3
16	2	0	3	1	59	3	0	2	0
17	15	0	3	3	60	6	0	1	2
18	13	0	7	6	61	4	0	2	1
19	14	0	5	3	62		0	2	0
20	13	0	1	1	63	4	0	0	1
21	9	0	3	1	64	1	0	1	1
22	12	0	3	1	65	2	0	1	0
23	8	0	3	1	66	2	0	2	0
24	11	0	3	2	67	1	0	1	0
25	7	0	1	4	68	1	0	1	1
26	10	0	2	1	69		0	3	1
27	3	0	0	1	70	1	0	2	0
28	4	0	1	0	71	3	0	1	0
29	7	0	3	1	72	3	0	1	1
30	8	0	2	2	73	1	0	1	1
31	9	0	3	2	75		0	3	0
32	6	0	1	0	76	1	0	2	0
33	2	0	1	2	77	2	0	0	1
34	5	0	2	4	78	1	0	6	1
35	4	0	2	1	79		0	2	0
36	6	0	1	2	80	1	0	3	1
37	2	0	2	2	81		0	1	1
38	6	0	1	1	82	1	0	0	0
39	8	0	1	0	85		0	1	0
40	6	0	1	2	86	1	0	0	0
41	10	0	2	2	87		0	1	0
42	5	0	2	2	89		0	1	0
43	2	0	2	1	999	1	0	0	0
44	3	0	5	0	Total	315	8	140	77

FATALITIES BY AGE AND PERSON TYPE

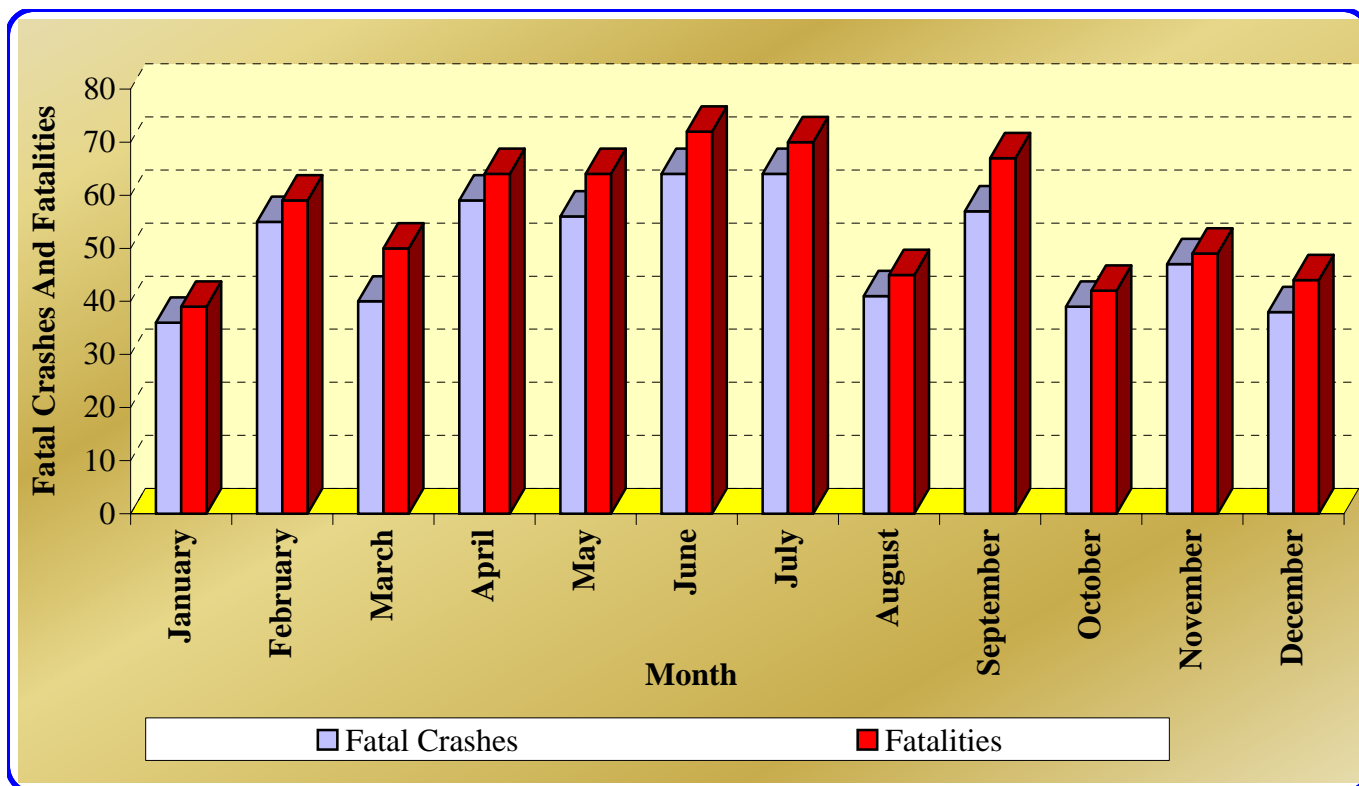
Age	Driver	Passenger	Non-Motorist		Age	Driver	Passenger	Non-Motorist
1	0	7	0		47	5	1	0
2	0	3	0		48	6	0	0
3	0	3	0		49	5	1	2
4	0	2	0		50	2	1	1
5	0	1	1		51	8	0	1
6	0	3	0		52	3	4	0
7	0	1	0		53	9	1	0
8	0	2	1		54	6	1	1
9	0	2	0		55	6	1	1
11	0	1	0		56	7	0	0
12	1	1	1		57	6	0	0
13	2	1	0		58	9	1	0
14	1	2	0		59	7	1	0
15	1	3	0		60	9	2	1
16	4	2	0		61	8	0	2
17	14	8	2		62	5	0	0
18	19	8	0		63	6	0	1
19	16	7	1		64	2	2	0
20	13	2	1		65	3	0	0
21	12	4	0		66	3	1	0
22	14	7	0		67	2	0	1
23	9	6	2		68	4	0	0
24	15	6	0		69	3	1	0
25	10	3	0		70	3	0	0
26	11	6	1		71	2	2	0
27	5	0	1		72	3	2	0
28	3	2	1		73	3	1	0
29	9	3	3		74	0	0	1
30	13	2	1		75	3	0	0
31	13	3	1		76	3	0	1
32	7	1	0		77	3	0	0
33	7	0	0		78	7	1	1
34	11	1	1		79	1	1	0
35	9	0	0		80	5	0	0
36	7	4	0		81	2	0	0
37	8	0	1		82	1	0	1
38	7	1	0		84	0	0	1
39	9	3	0		85	0	1	0
40	9	1	0		86	1	0	0
41	14	1	0		87	1	0	0
42	9	2	0		89	1	0	0
43	5	1	1		90	0	0	1
44	10	0	0		Unknown	0	1	0
45	14	3	1					
46	5	2	0					
					Total	479	148	38

ALCOHOL/DRUG RELATED FATALITIES BY AGE AND PERSON TYPE

Age	Driver	Passenger	Non-Motorist		Age	Driver	Passenger	Non-Motorist
1	0	2	0		45	8	2	1
3	0	2	0		46	3	1	0
4	0	2	0		47	2	1	0
5	0	1	0		48	3	0	0
9	0	1	0		49	3	1	1
12	0	1	0		50	0	0	1
15	0	3	0		51	4	0	0
17	4	1	2		52	0	1	0
18	7	4	0		53	2	0	0
19	7	4	1		54	2	0	0
20	8	2	0		55	3	0	0
21	5	4	0		56	2	0	0
22	7	4	0		57	1	0	0
23	5	3	1		58	2	0	0
24	8	3	0		59	3	0	0
25	5	3	0		60	5	0	0
26	5	3	0		61	3	0	2
27	3	0	1		62	1	0	0
28	1	2	0		63	3	0	0
29	5	3	2		64	1	0	0
30	9	1	0		65	2	0	0
31	10	1	0		67	2	0	1
32	3	0	0		68	1	0	0
33	2	0	0		69	0	1	0
34	6	0	1		70	1	0	0
35	7	0	0		71	1	2	0
36	5	2	0		73	1	1	0
37	7	0	1		75	1	0	0
38	6	1	0		76	1	0	0
39	7	2	0		77	1	0	0
40	4	1	0		78	1	1	0
41	7	1	0		80	1	0	0
42	4	2	0		82	0	0	1
43	2	0	0		Unknown	0	1	0
44	7	0	0		Total	220	71	16

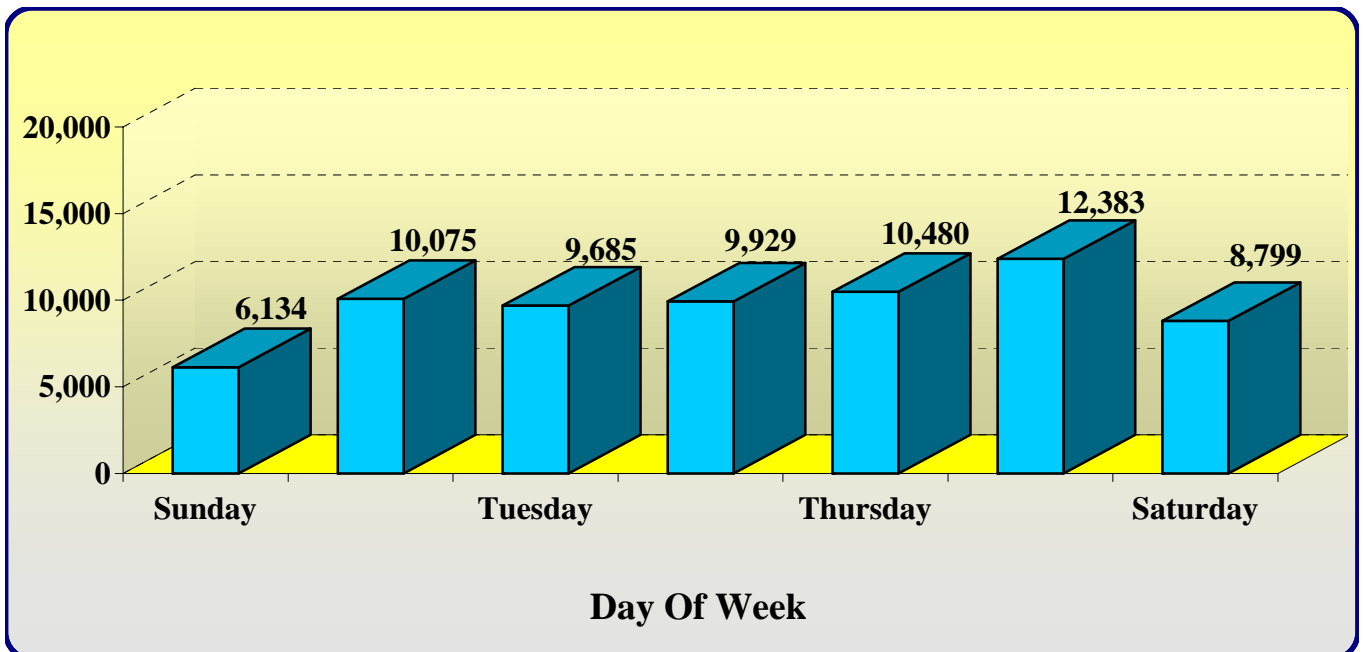
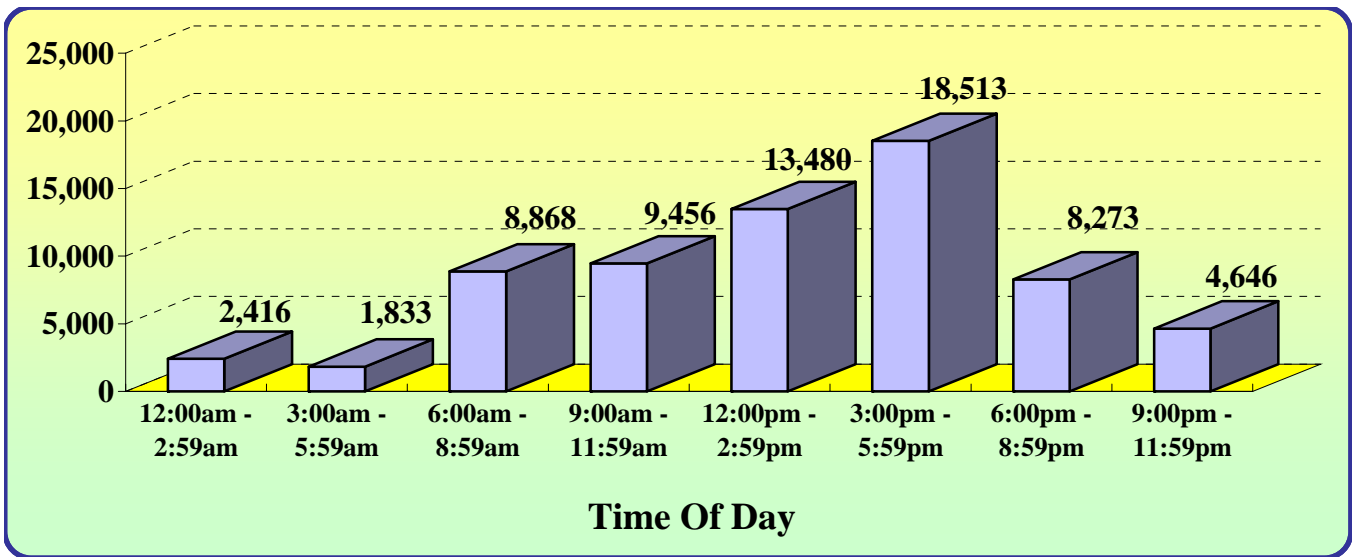
FATAL CRASHES AND FATALITIES BY MONTH

Month	Fatal Crashes	Fatalities
January	36	39
February	55	59
March	40	50
April	59	64
May	56	64
June	64	72
July	64	70
August	41	45
September	57	67
October	39	42
November	47	49
December	38	44
Total	596	665



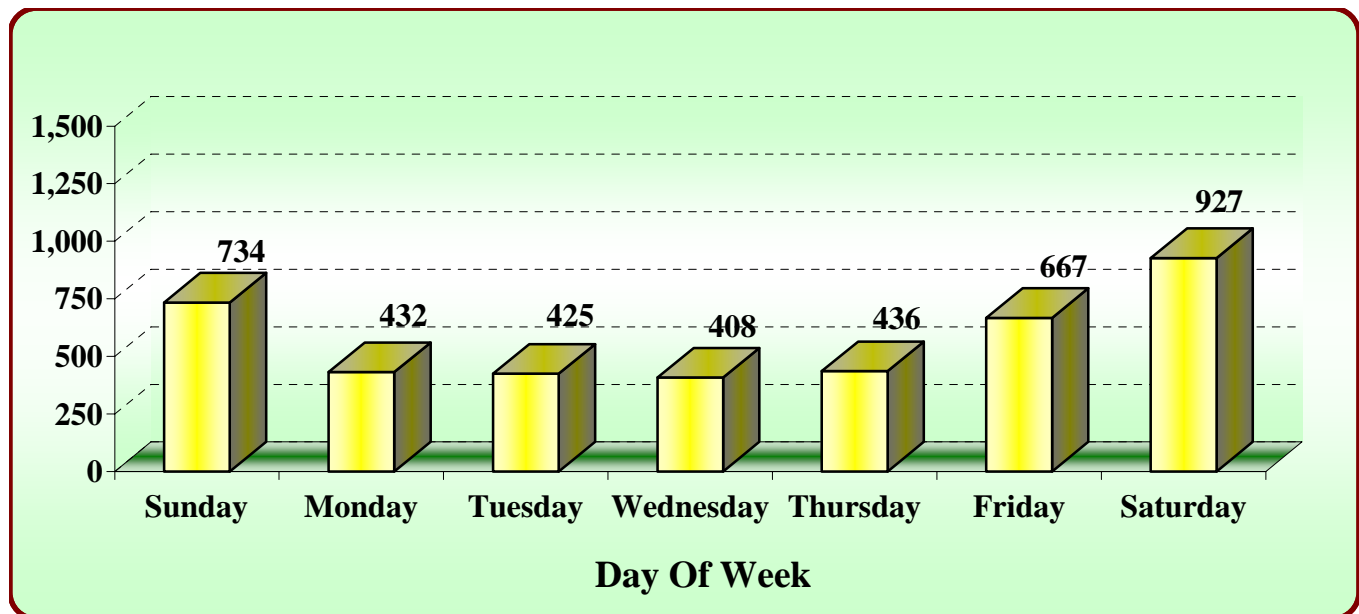
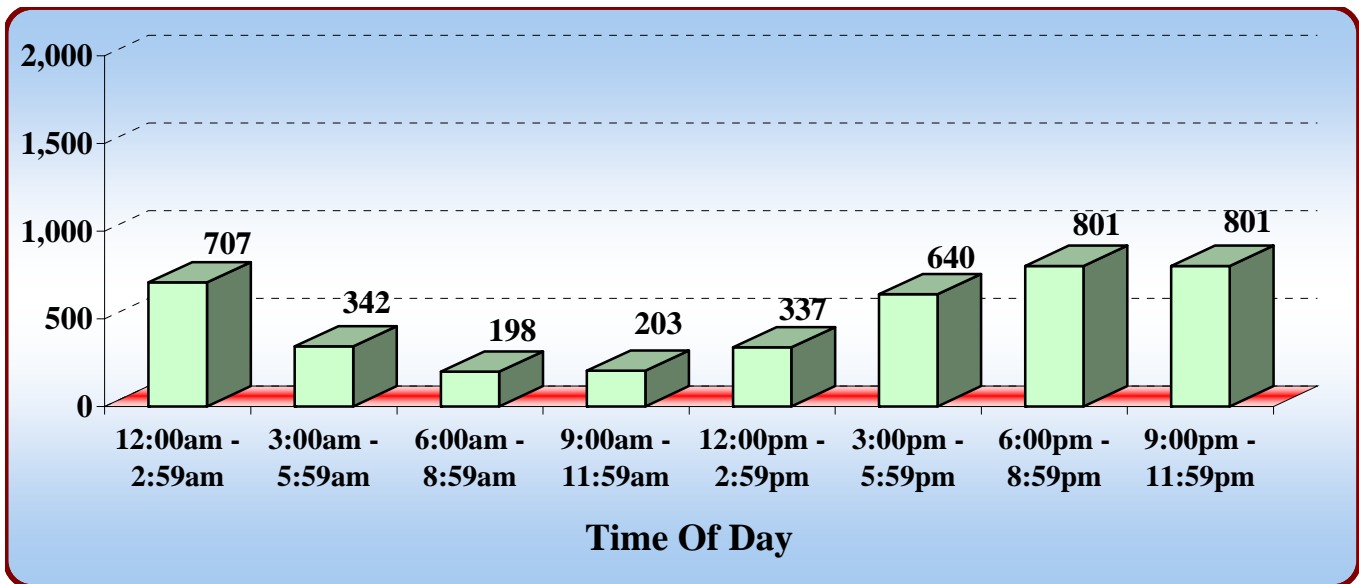
CRASHES BY TIME OF DAY AND DAY OF WEEK

Time of Day	Sunday	Monday	Tuesday	Wednesday	Thursday	Friday	Saturday	Total
12:00am - 2:59am	618	220	209	228	219	311	611	2,416
3:00am - 5:59am	416	226	185	209	186	210	401	1,833
6:00am - 8:59am	368	1,617	1,668	1,582	1,619	1,466	548	8,868
9:00am - 11:59am	748	1,430	1,382	1,377	1,476	1,720	1,323	9,456
12:00pm - 2:59pm	1,233	1,991	1,875	1,963	2,084	2,549	1,785	13,480
3:00pm - 5:59pm	1,275	2,953	2,782	2,916	3,074	3,653	1,860	18,513
6:00pm - 8:59pm	964	1,103	1,084	1,129	1,224	1,477	1,292	8,273
9:00pm - 11:59pm	512	535	500	525	598	997	979	4,646
Total	6,134	10,075	9,685	9,929	10,480	12,383	8,799	67,485



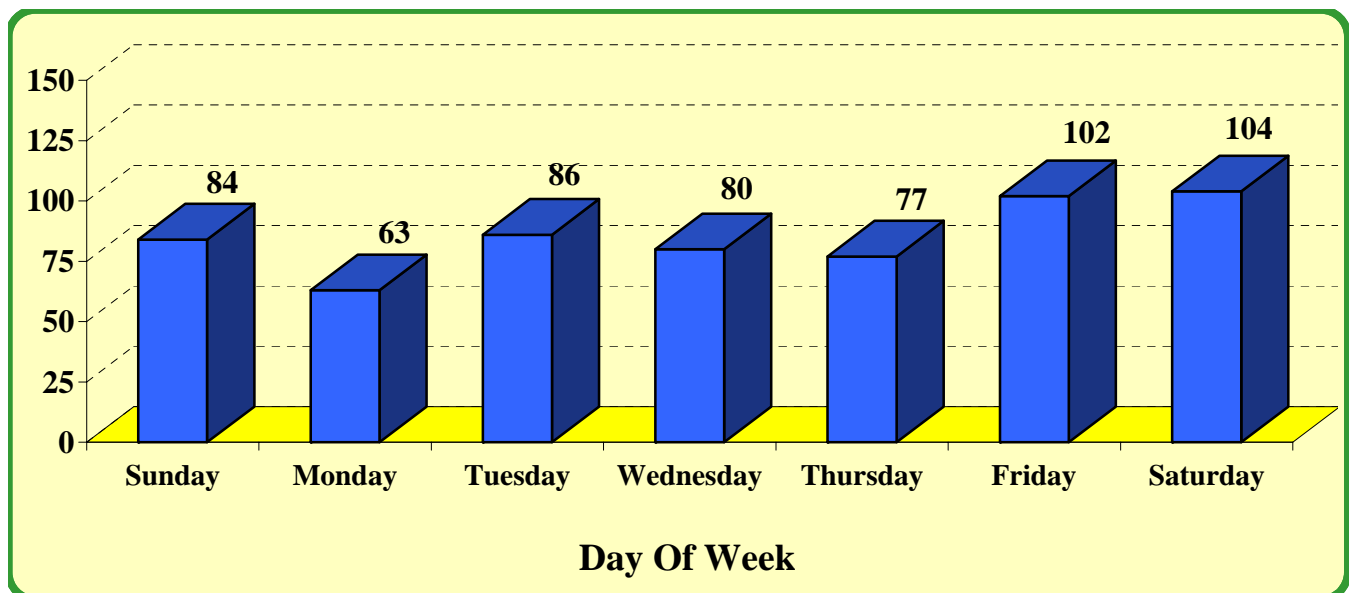
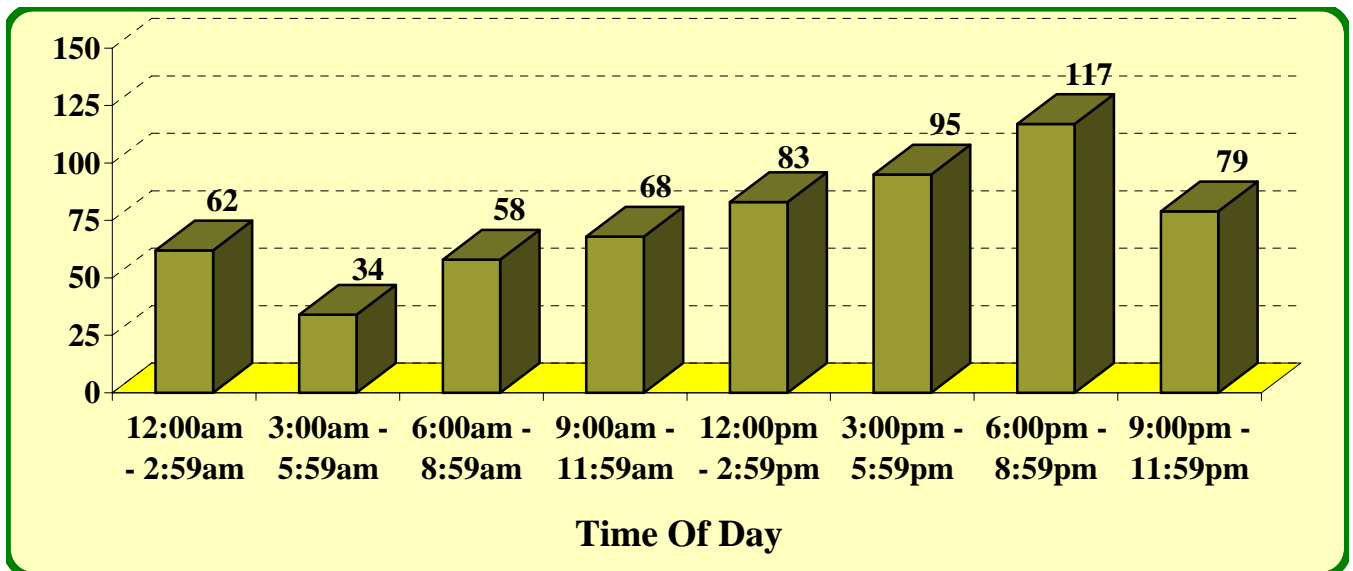
ALCOHOL/DRUG RELATED CRASHES BY TIME OF DAY AND DAY OF WEEK

Time of Day	Sunday	Monday	Tuesday	Wednesday	Thursday	Friday	Saturday	Total
12:00am - 2:59am	221	42	59	52	46	93	194	707
3:00am - 5:59am	121	20	19	23	23	34	102	342
6:00am - 8:59am	39	23	18	19	28	24	47	198
9:00am - 11:59am	37	28	24	24	26	24	40	203
12:00pm - 2:59pm	47	42	40	42	44	52	70	337
3:00pm - 5:59pm	78	91	78	85	80	111	117	640
6:00pm - 8:59pm	114	96	101	83	106	139	162	801
9:00pm - 11:59pm	77	90	86	80	83	190	195	801
Total	734	432	425	408	436	667	927	4,029



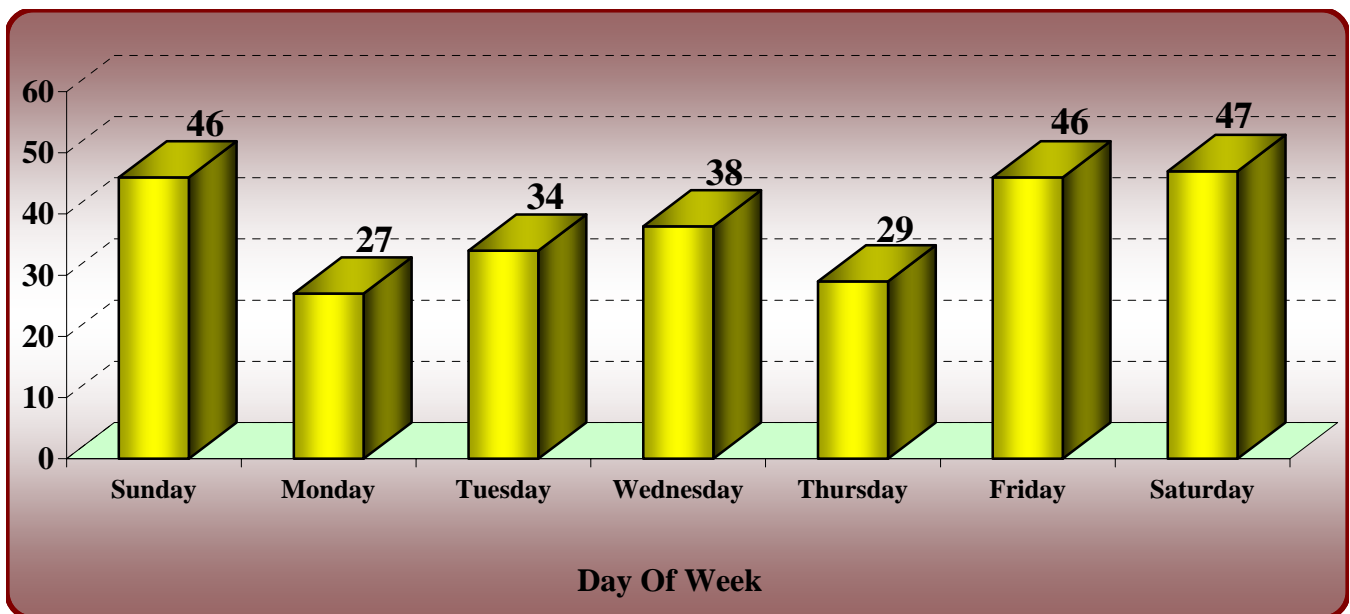
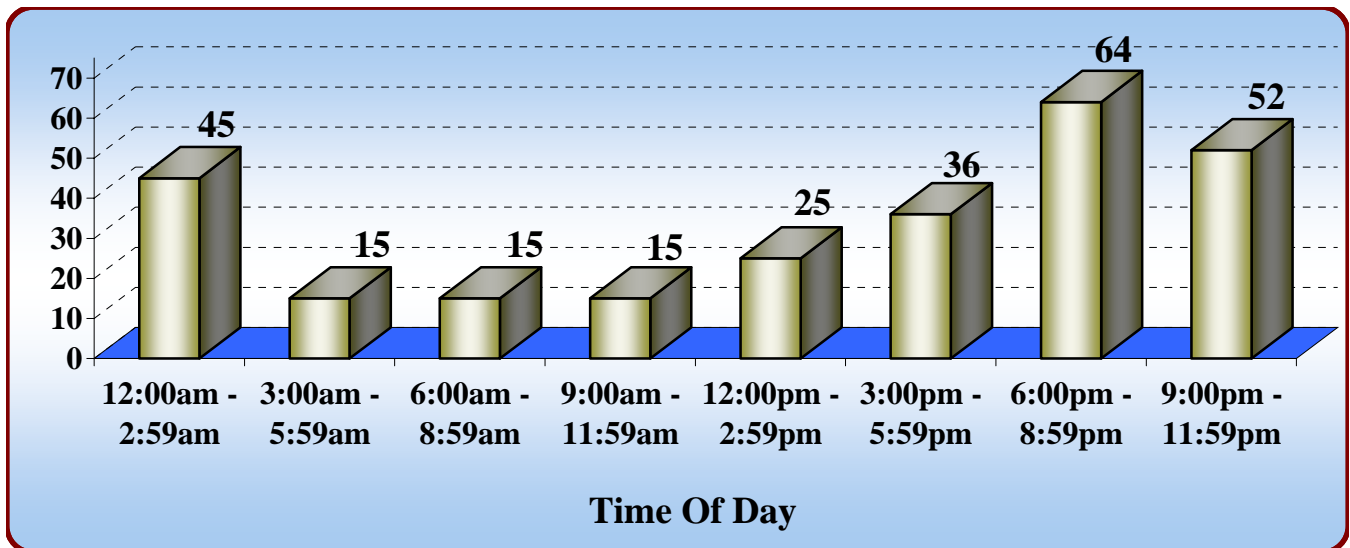
FATAL CRASHES BY TIME OF DAY AND DAY OF WEEK

Time of Day	Sunday	Monday	Tuesday	Wednesday	Thursday	Friday	Saturday	Total
12:00am - 2:59am	20	7	6	5	5	5	14	62
3:00am - 5:59am	7	3	7	2	4	4	7	34
6:00am - 8:59am	9	5	10	11	7	9	7	58
9:00am - 11:59am	9	9	13	7	5	14	11	68
12:00pm - 2:59pm	8	8	9	16	11	15	16	83
3:00pm - 5:59pm	12	9	9	16	14	18	17	95
6:00pm - 8:59pm	15	11	21	11	19	25	15	117
9:00pm - 11:59pm	4	11	11	12	12	12	17	79
Total	84	63	86	80	77	102	104	596



ALCOHOL/DRUG RELATED FATAL CRASHES BY TIME OF DAY AND DAY OF WEEK

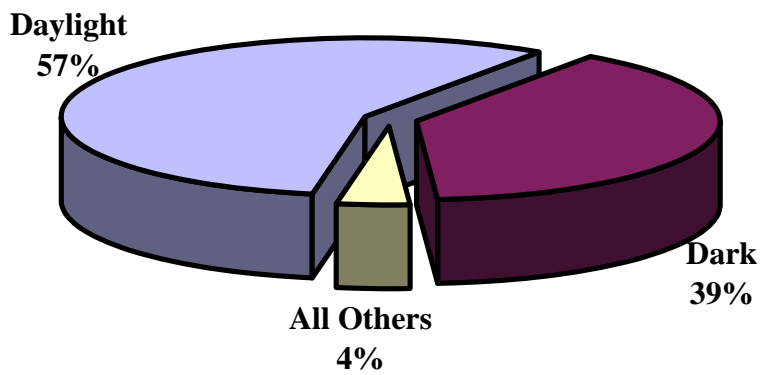
Time of Day	Sunday	Monday	Tuesday	Wednesday	Thursday	Friday	Saturday	Total
12:00am - 2:59am	15	5	5	3	4	3	10	45
3:00am - 5:59am	4	1	1	2	1	2	4	15
6:00am - 8:59am	4	1	4	3	1	0	2	15
9:00am - 11:59am	3	3	3	1	0	4	1	15
12:00pm - 2:59pm	3	3	1	8	4	2	4	25
3:00pm - 5:59pm	6	5	1	6	4	8	6	36
6:00pm - 8:59pm	9	3	13	6	7	18	8	64
9:00pm - 11:59pm	2	6	6	9	8	9	12	52
Total	46	27	34	38	29	46	47	267



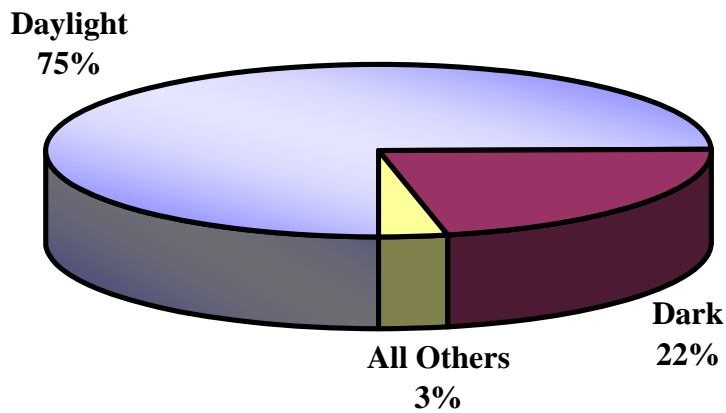
CRASHES BY LIGHTING CONDITIONS

Light Condition	Fatal Crashes	Total Crashes
Daylight	340	50,501
Dark	232	14,779
Other	20	2,044
Unknown	4	161
Total	596	67,485

Fatal Crashes

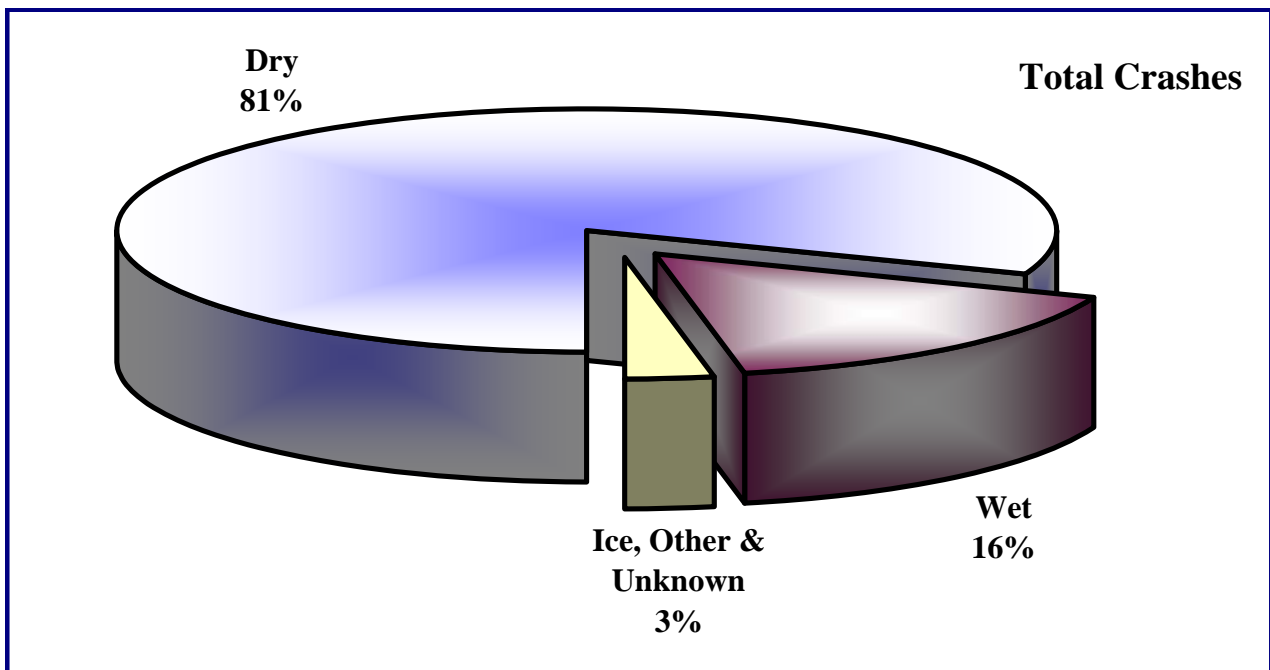
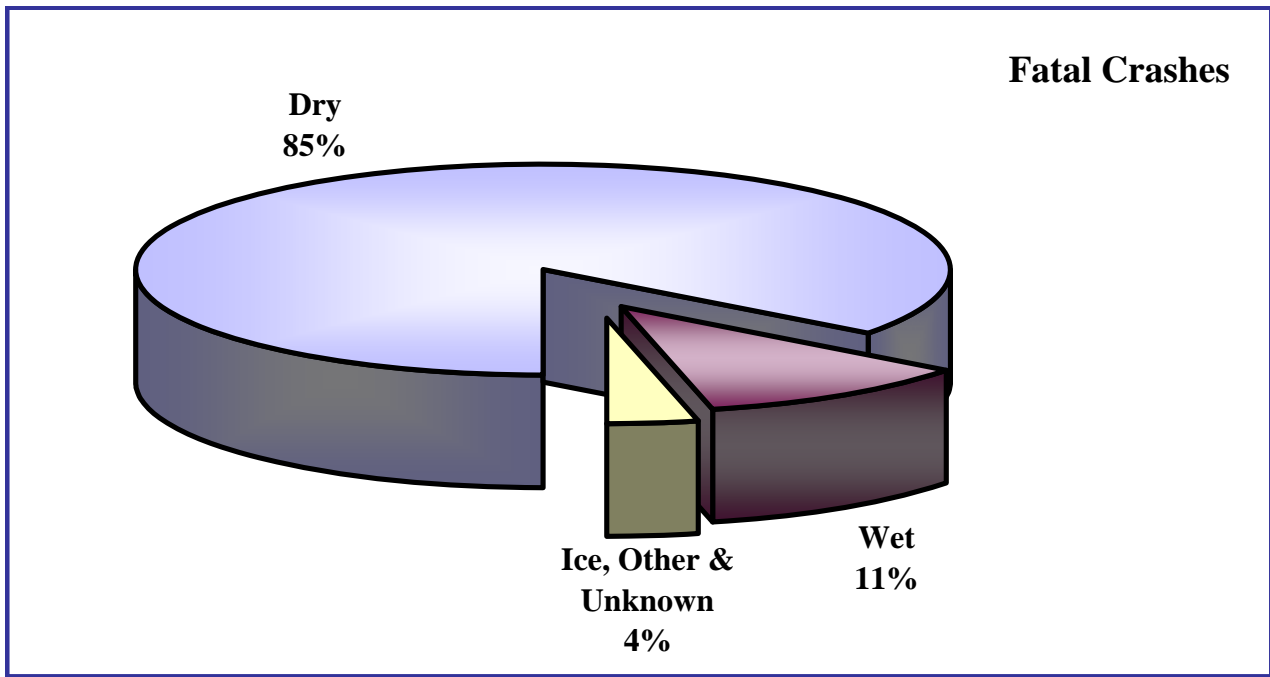


Total Crashes



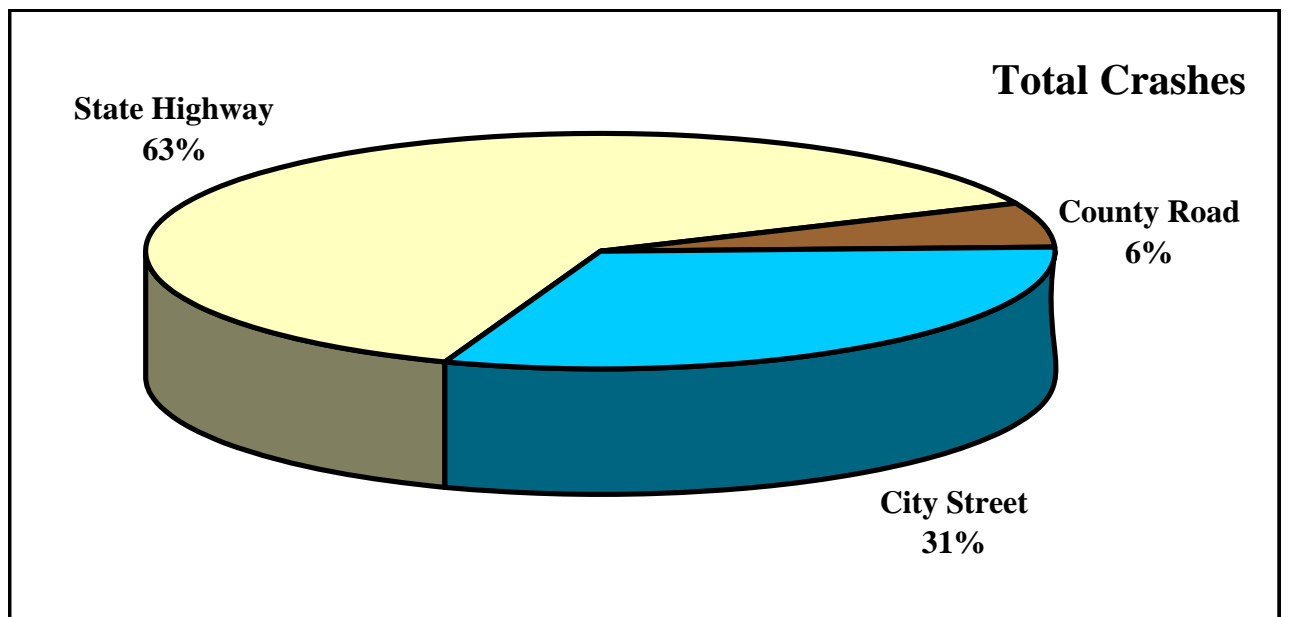
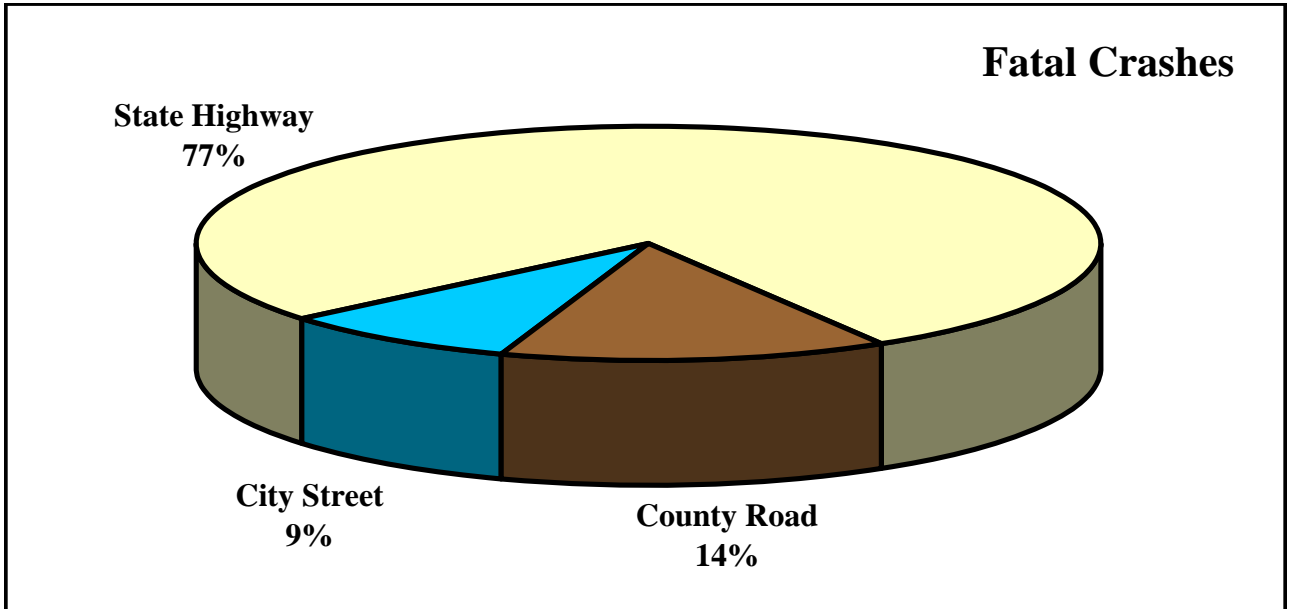
CRASHES BY ROAD SURFACE CONDITIONS

Condition	Fatal Crashes	Total Crashes
Dry	509	54,460
Wet	65	11,045
Ice	11	1,146
Other	9	394
Unknown	2	440
Total	596	67,485



CRASHES BY ROAD SYSTEM

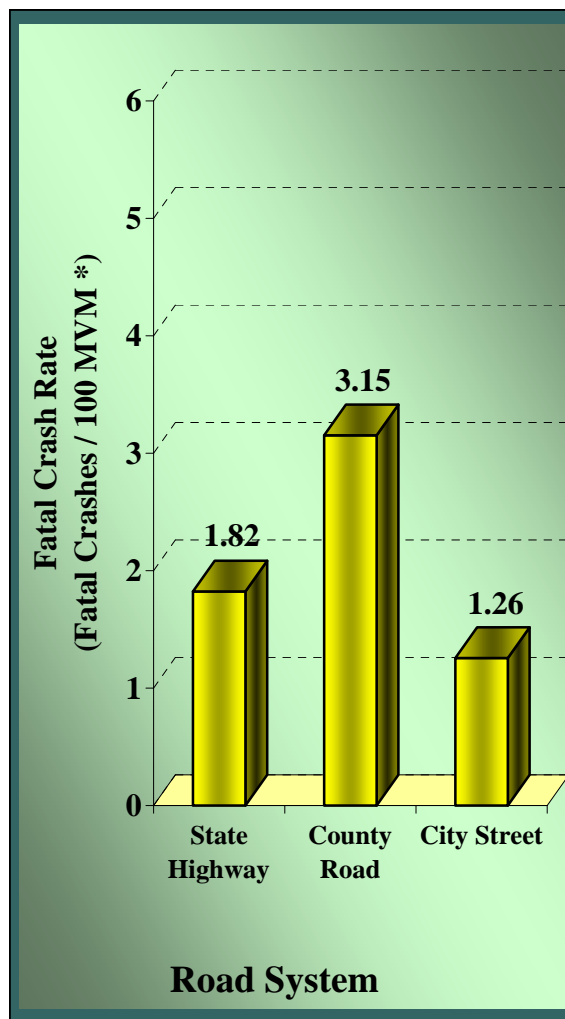
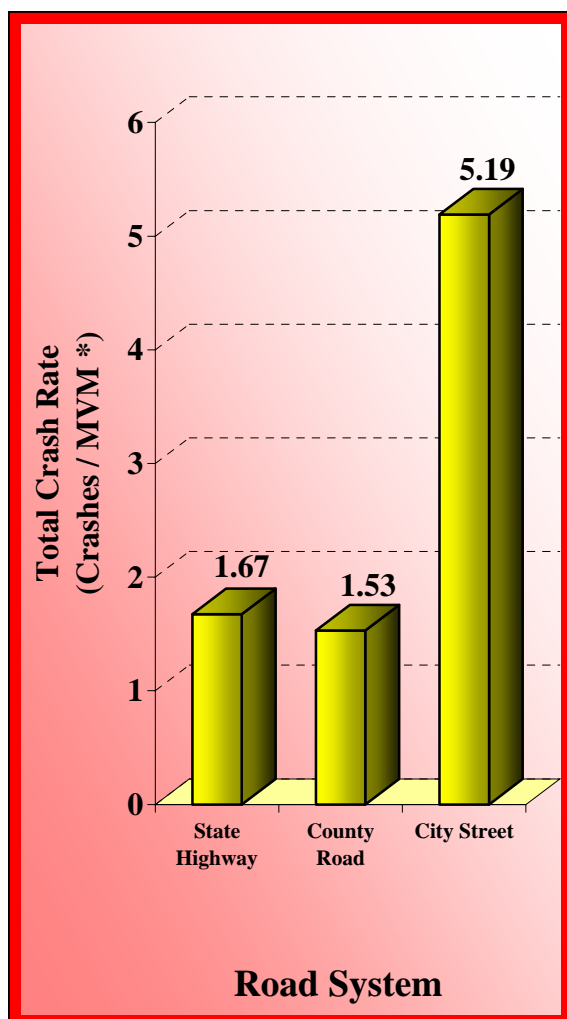
Road System	Fatal Crashes	Nonfatal Injury	P.D.O. * Crashes	Total Crashes
State Highway	461	22,195	19,679	42,335
County Road	84	2,774	1,224	4,082
City Street	51	8,954	12,063	21,068
Totals	596	33,923	32,966	67,485



* Property Damage Only Crashes

CRASH RATES BY ROAD SYSTEM

Road System	Annual MVM*	Total Crashes	Crashes per MVM*	Fatal Crashes	Fatal Crashes per 100 MVM*
State Highway	25,286	42,335	1.67	461	1.82
County Road	2,665	4,082	1.53	84	3.15
City Street	4,059	21,068	5.19	51	1.26
Totals	32,010	67,485	2.11	596	1.86

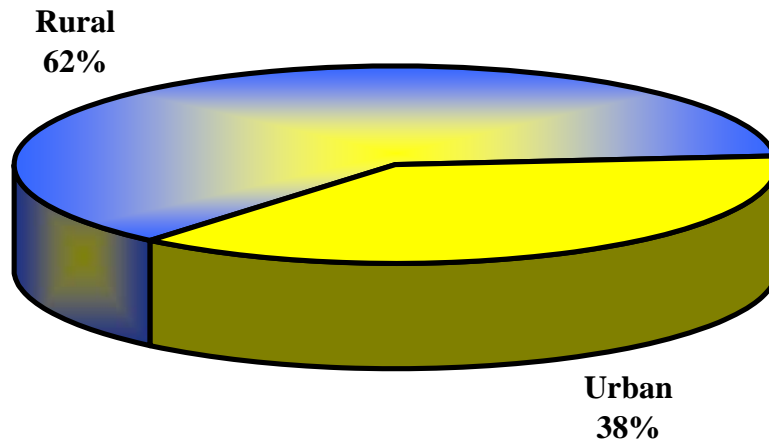


* Million vehicle miles

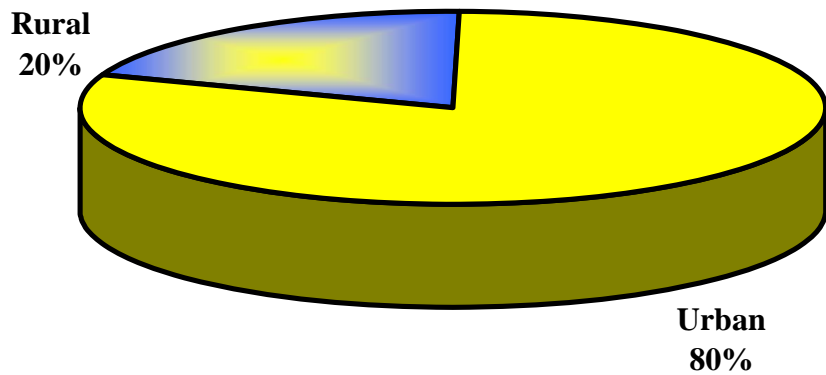
CRASHES BY RURAL/URBAN LOCATION

Location	Fatal Crashes	Total Crashes
Rural	372	13,371
Urban	224	54,114
Total	596	67,485

Fatal Crashes

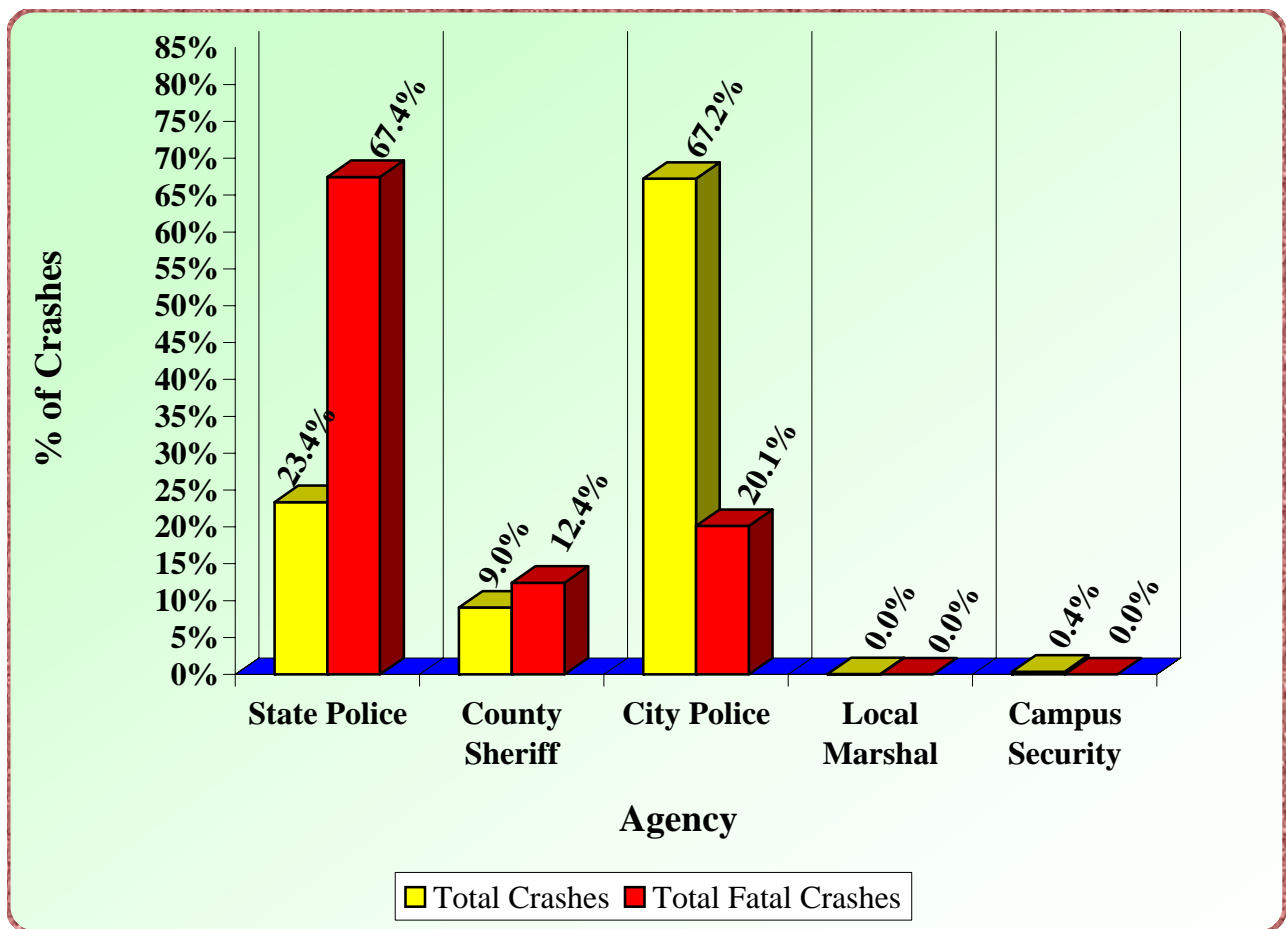


Total Crashes



CRASHES BY INVESTIGATING AGENCY

Agency	Total Crashes	% of Total	Total Fatal	% of Total
State Police	15,760	23.4%	402	67.4%
County Sheriff	6,107	9.0%	74	12.4%
City Police	45,363	67.2%	120	20.1%
Local Marshal	16	0.0%	0	0.0%
Campus Security	239	0.4%	0	0.0%
Total	67,485	100.00%	596	100.00%



CRASHES BY TYPE OF COLLISION

All Crashes						
Type Of Collision	Fatal Crashes	Fatalities	Injury Crashes	Injuries	P.D.O. * Crashes	Total Crashes
Angle	114	139	10,203	23,858	9,751	20,068
Backing (Rear to Rear)	0	0	559	1,269	1,051	1,610
Head On	76	93	811	2,150	341	1,228
Rear End	22	24	9,279	21,736	10,075	19,376
Sideswipe Opposite Direction	5	5	815	1,921	694	1,514
Sideswipe Same Direction	9	10	1,841	4,455	3,409	5,259
Single Vehicle Crash	370	394	10,415	14,181	7,645	18,430
Total	596	665	33,923	69,570	32,966	67,485

Alcohol and Other Drug Related Crashes						
Type Of Collision	Fatal Crashes	Fatalities	Injury Crashes	Injuries	P.D.O. * Crashes	Total Crashes
Angle	36	51	341	939	148	525
Backing (Rear to Rear)	0	0	10	20	19	29
Head On	34	44	110	365	22	166
Rear End	12	14	302	786	177	491
Sideswipe Opposite Direction	1	1	80	205	41	122
Sideswipe Same Direction	4	4	73	175	64	141
Single Vehicle Crash	174	193	1,628	2,215	753	2,555
Total	261	307	2,544	4,705	1,224	4,029

*Property Damage Only

VEHICLES INVOLVED BY FIRST HARMFUL EVENT

Harmful Event	Single Vehicle Crashes			Multi-Vehicle Crashes		
	Fatal Crashes	Injury Crashes	P.D.O.* Crashes	Fatal Crashes	Injury Crashes	P.D.O.* Crashes
Animal	2	129	57	0	0	2
Bank or Ledge	51	2,007	1,021	1	29	4
Bridge - Underpass	13	207	169	0	1	3
Fell From Vehicle	2	22	1	0	1	1
Fence or Fence Post	4	570	499	0	7	3
Fire	0	3	1	0	0	1
Guard Rail or Post	21	413	363	1	7	3
House - Building	3	89	112	0	2	0
Immersion	0	9	7	0	0	0
Impact Cushion Device	0	14	22	0	1	0
MV In Other Roadway	0	1	0	0	47	35
MV In Transport	2	39	48	508	49,215	51,869
Overturned	91	1,672	514	1	15	1
Parked Vehicle	1	539	1,625	0	30	15
Pedalcycle	3	158	24	0	0	0
Pedestrian	27	381	14	3	20	1
Seizure/Blackout	0	11	1	0	1	2
Sign - Traffic Signal	13	441	469	2	19	3
Train	11	26	31	0	4	3
Tree(s)	93	1,649	833	0	8	3
Utility Pole	14	635	506	1	9	5
Other Non-Fixed Object	1	162	143	0	78	56
Other Fixed Object	18	1,199	1,148	0	15	5
Unknown	0	37	33	0	54	39
Total	370	10,413	7,641	517	49,563	52,054

*Property Damage Only

DRIVERS INVOLVED BY OPERATOR FACTOR

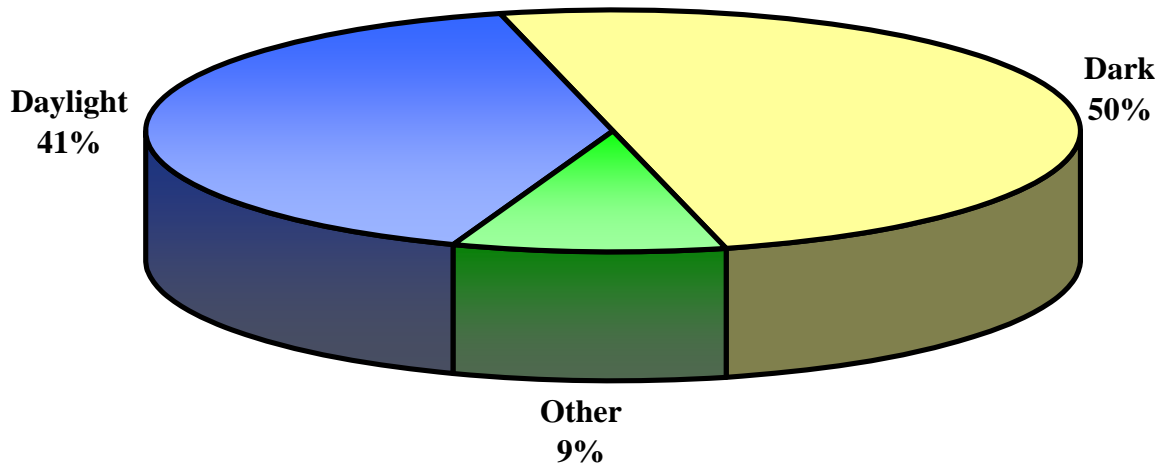
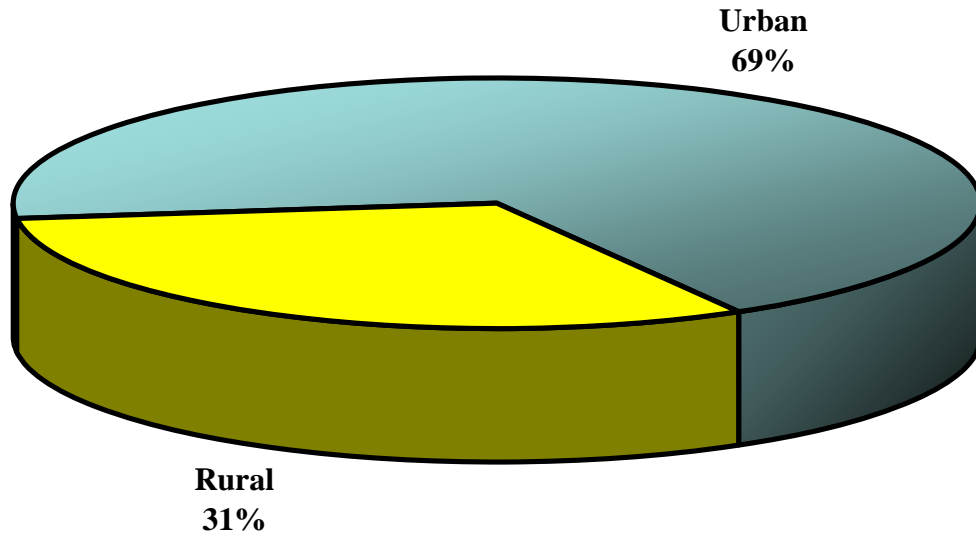
Operator Factor	Crash Severity					Total
	1	2	3	4	5	
None	282	911	5,568	18,809	25,639	51,209
Alcohol	46	154	633	553	628	2,014
Careless/Prohibited Driving	215	738	2,887	5,932	9,090	18,862
Crowded Off Roadway	0	9	43	107	130	289
Cutting In	1	1	8	65	89	164
Defective Brakes	1	5	48	128	175	357
Defective Lights	0	3	8	32	26	69
Disregarded Officer/Flagman	0	0	4	10	9	23
Disregarded Stop Sign	6	16	168	324	353	867
Disregarded Traffic Signal	3	20	243	535	663	1,464
Disregarded Yield Sign	1	0	5	13	15	34
Driving Without Lights	2	3	9	27	24	65
Drugs	4	5	47	57	60	173
Failure To Dim Headlights	0	2	0	10	4	16
Failure To Or Improper Signal	0	5	6	30	36	77
Failure To Yield	52	232	1,753	5,002	6,796	13,835
Following Too Close	2	95	572	3,667	4,670	9,006
Impeding Traffic	0	2	10	25	28	65
Improper Backing	0	4	22	506	1,189	1,721
Improper Lane Change	1	10	68	470	1,201	1,750
Improper Left Turn	3	11	77	331	485	907
Improper Passing	8	22	67	222	352	671
Improper Right Turn	0	2	30	161	300	493
Improperly Parked	1	9	7	42	61	120
Other Defective Equipment	8	23	97	147	214	489
Prohibited U Turn	1	2	10	9	19	41
Runaway Car/No Driver	0	1	1	0	0	2
Too Fast For Conditions	67	126	720	1,214	1,566	3,693
Wrong Side of Road	52	66	187	276	322	903
Wrong Way/One Way Traffic	4	4	13	19	41	81
Other	42	149	796	1,716	2,292	4,995
Unknown	85	114	715	1,971	3,218	6,103
Total	887	2,744	14,822	42,410	59,695	120,558

DRIVERS INVOLVED IN ALCOHOL/DRUG RELATED CRASHES BY OPERATOR FACTOR

Operator Factor	Crash Severity					Total
	1	2	3	4	5	
None	108	99	397	476	469	1,549
Alcohol	45	154	633	553	628	2,013
Careless/Prohibited Driving	101	88	305	216	282	992
Crowded off Roadway	0	0	2	0	1	3
Cutting In	0	0	0	0	0	0
Defective Brakes	0	0	0	1	4	5
Defective Lights	0	0	1	1	0	2
Disregarded Officer/Flagman	0	0	0	1	1	2
Disregarded Stop Sign	0	1	17	10	18	46
Disregarded Traffic Signal	2	0	7	5	9	23
Disregarded Yield Sign	1	0	1	1	0	3
Driving Without Lights	1	1	0	3	0	5
Drugs	4	5	47	57	60	173
Failure To Dim Headlights	0	1	0	0	0	1
Failure To or Improper Signal	0	0	0	0	0	0
Failure To Yield	14	14	56	55	67	206
Following Too Close	0	5	11	41	43	100
Impeding Traffic	0	0	1	1	0	2
Improper Backing	0	0	0	4	10	14
Improper Lane Change	0	0	2	8	10	20
Improper Left Turn	0	0	2	2	4	8
Improper Passing	2	3	9	3	3	20
Improper Right Turn	0	0	0	3	7	10
Improperly Parked	1	3	1	2	3	10
Other Defective Equipment	1	0	0	3	6	10
Prohibited U Turn	0	0	1	0	0	1
Runaway Car/No Driver	0	1	0	0	0	1
Too Fast For Conditions	25	14	38	27	29	133
Wrong Side of Road	25	15	31	17	15	103
Wrong Way/One Way Traffic	2	2	0	2	1	7
Other	12	15	31	18	28	104
Unknown	30	14	28	18	25	115
Total	374	435	1,621	1,528	1,723	5,681

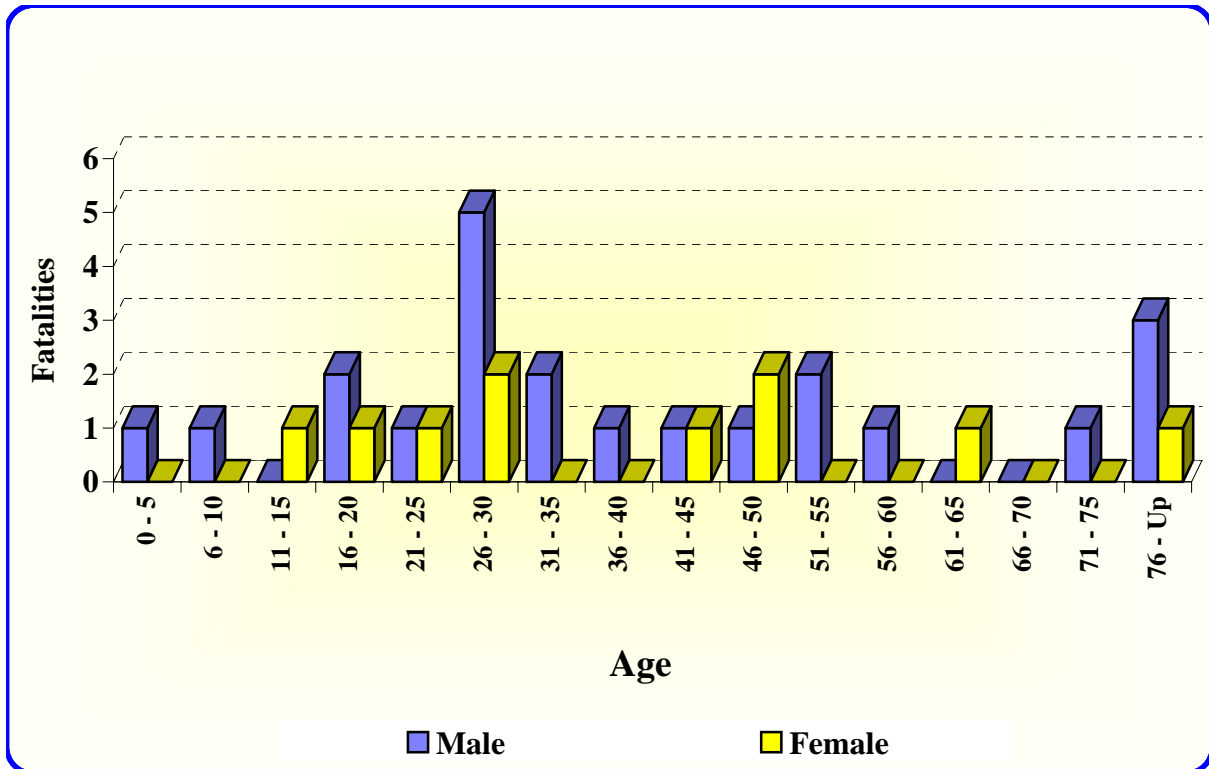
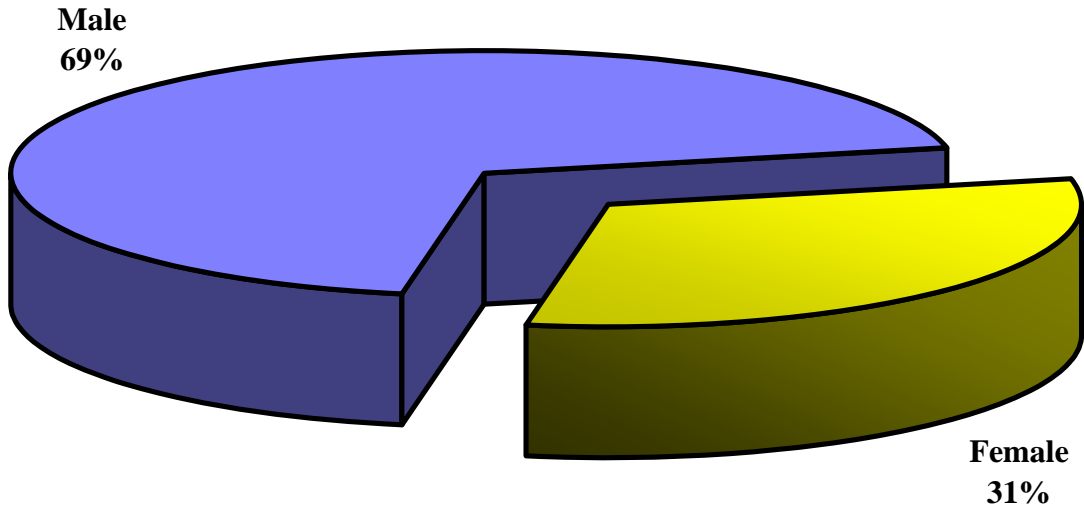
PEDESTRIAN FATALITIES

Rural	Urban	Daylight	Dark	Other
10	22	13	16	3



PEDESTRIAN FATALITIES (Cont.)

Male	Female	Total
22	10	32



ARKANSAS' 20 LARGEST CITIES BY POPULATION CRASHES, FATALITIES AND INJURIES

City	Fatal Crashes	Fatalities	Injury Crashes	Injuries	P.D.O. *	Total Crashes
Little Rock	23	25	3,208	6,318	4,057	7,288
Fort Smith	8	12	1,453	2,677	2,356	3,817
North Little Rock	9	11	1,175	2,069	2,450	3,634
Fayetteville	8	8	2,007	4,790	1,240	3,255
Jonesboro	13	14	928	1,717	1,739	2,680
Pine Bluff	4	4	992	2,214	802	1,798
Springdale	5	5	532	842	1,730	2,267
Conway	6	6	783	1,788	734	1,523
Rogers	6	8	592	1,209	688	1,286
Hot Springs	4	5	656	1,040	1,787	2,447
Jacksonville	3	3	211	442	271	485
West Memphis	5	5	399	870	579	983
Texarkana	4	4	397	873	330	731
Russellville	7	9	276	490	729	1,012
Paragould	4	5	699	1,789	229	932
Benton	1	1	299	523	634	934
El Dorado	2	2	440	983	439	881
Sherwood	0	0	210	342	360	570
Bentonville	4	4	435	832	791	1,230
Van Buren	4	4	340	803	333	677

* Property Damage Only

ARKANSAS' 20 LARGEST CITIES BY POPULATION ALCOHOL AND OTHER DRUG RELATED CRASHES, FATALITIES AND INJURIES

City	Fatal Crashes	Fatalities	Injury Crashes	Injuries	P.D.O. *	Total Crashes
Little Rock	11	12	156	272	116	283
Fort Smith	3	5	90	162	72	165
North Little Rock	7	9	62	132	70	139
Fayetteville	6	6	172	215	43	221
Jonesboro	7	8	55	101	46	108
Pine Bluff	1	1	43	64	21	65
Springdale	3	3	56	148	92	151
Conway	2	2	37	65	28	67
Rogers	1	1	43	57	14	58
Hot Springs	3	4	54	104	50	107
Jacksonville	1	1	8	22	14	23
West Memphis	3	3	22	40	18	43
Texarkana	3	3	27	44	17	47
Russellville	3	4	19	32	13	35
Paragould	1	1	28	38	10	39
Benton	0	0	19	30	11	30
El Dorado	0	0	22	34	12	34
Sherwood	0	0	12	25	13	25
Bentonville	1	1	23	44	21	45
Van Buren	4	4	18	29	11	33

* Property Damage Only

TOTAL CRASHES, FATALITIES AND INJURIES BY COUNTY

County	Fatal Crashes	Fatalities	Injury Crashes	Injuries	P.D.O. Crashes	Total Crashes
ARKANSAS	6	7	283	580	128	417
ASHLEY	6	7	224	426	220	450
BAXTER	10	11	275	485	434	719
BENTON	32	36	2,302	4,834	2,174	4,508
BOONE	5	8	501	1,142	281	787
BRADLEY	3	3	120	244	30	153
CALHOUN	5	5	74	111	18	97
CARROLL	9	13	340	717	166	515
CHICOT	3	3	117	254	42	162
CLARK	5	6	204	342	233	442
CLAY	0	0	157	310	49	206
CLEBURNE	8	8	234	457	131	373
CLEVELAND	3	3	47	79	37	87
COLUMBIA	6	7	113	254	76	195
CONWAY	4	6	254	544	109	367
CRAIGHEAD	23	24	1,174	2,163	1,851	3,048
CRAWFORD	18	21	735	1,608	611	1,364
CRITTENDEN	12	14	770	1,759	763	1,545
CROSS	4	4	256	518	93	353
DALLAS	5	7	107	221	35	147
DESHA	6	7	124	273	33	163
DREW	9	9	134	281	75	218
FAULKNER	14	15	1,229	2,681	1,025	2,268
FRANKLIN	2	2	122	247	77	201
FULTON	2	3	95	158	50	147
GARLAND	19	20	1,366	2,589	2,083	3,468
GRANT	7	10	131	305	88	226
GREENE	5	6	732	1,859	249	986
HEMPSTEAD	2	2	295	613	206	503
HOT SPRING	11	12	332	719	147	490
HOWARD	5	5	117	269	58	180
INDEPENDENCE	12	13	493	1,002	541	1,046
IZARD	3	3	45	82	10	58
JACKSON	5	6	124	272	71	200
JEFFERSON	10	12	1,263	2,729	972	2,245
JOHNSON	4	5	245	492	175	424
LAFAYETTE	3	3	47	77	14	64
LAWRENCE	6	7	142	300	50	198

TOTAL CRASHES, FATALITIES AND INJURIES BY COUNTY (CONT.)

County	Fatal Crashes	Fatalities	Injury Crashes	Injuries	P.D.O. Crashes	Total Crashes
LEE	1	1	56	127	25	82
LINCOLN	1	1	106	190	65	172
LITTLE RIVER	4	5	82	183	42	128
LOGAN	5	6	158	281	89	252
LONOKE	11	12	485	877	757	1,253
MADISON	5	5	131	239	68	204
MARION	1	1	82	160	44	127
MILLER	12	12	477	1,040	371	860
MISSISSIPPI	16	17	549	1,133	462	1,027
MONROE	3	3	108	222	44	155
MONTGOMERY	5	5	103	206	26	134
NEVADA	6	9	69	137	46	121
NEWTON	3	3	78	140	14	95
OUACHITA	10	11	145	254	105	260
PERRY	8	9	23	40	13	44
PHILLIPS	2	2	201	479	67	270
PIKE	2	2	121	232	26	149
POINSETT	10	10	250	478	176	436
POLK	3	3	135	288	95	233
POPE	14	16	415	783	813	1,242
PRAIRIE	2	2	59	87	73	134
PULASKI	59	66	5,439	10,295	7,779	13,277
RANDOLPH	6	6	162	362	105	273
SALINE	11	12	1,037	2,190	1,063	2,111
SCOTT	0	0	116	251	37	153
SEARCY	3	3	104	190	22	129
SEBASTIAN	12	16	1,856	3,529	2,494	4,362
SEVIER	4	5	216	509	81	301
SHARP	6	6	157	390	77	240
ST. FRANCIS	8	8	374	911	104	486
STONE	2	2	88	181	39	129
UNION	8	8	629	1,324	503	1,140
VAN BUREN	6	7	164	379	36	206
WASHINGTON	26	28	3,235	6,950	3,210	6,471
WHITE	19	20	997	2,152	473	1,489
WOODRUFF	2	2	18	35	5	25
YELL	8	8	175	350	112	295
TOTALS	596	665	33,923	69,570	32,966	67,485

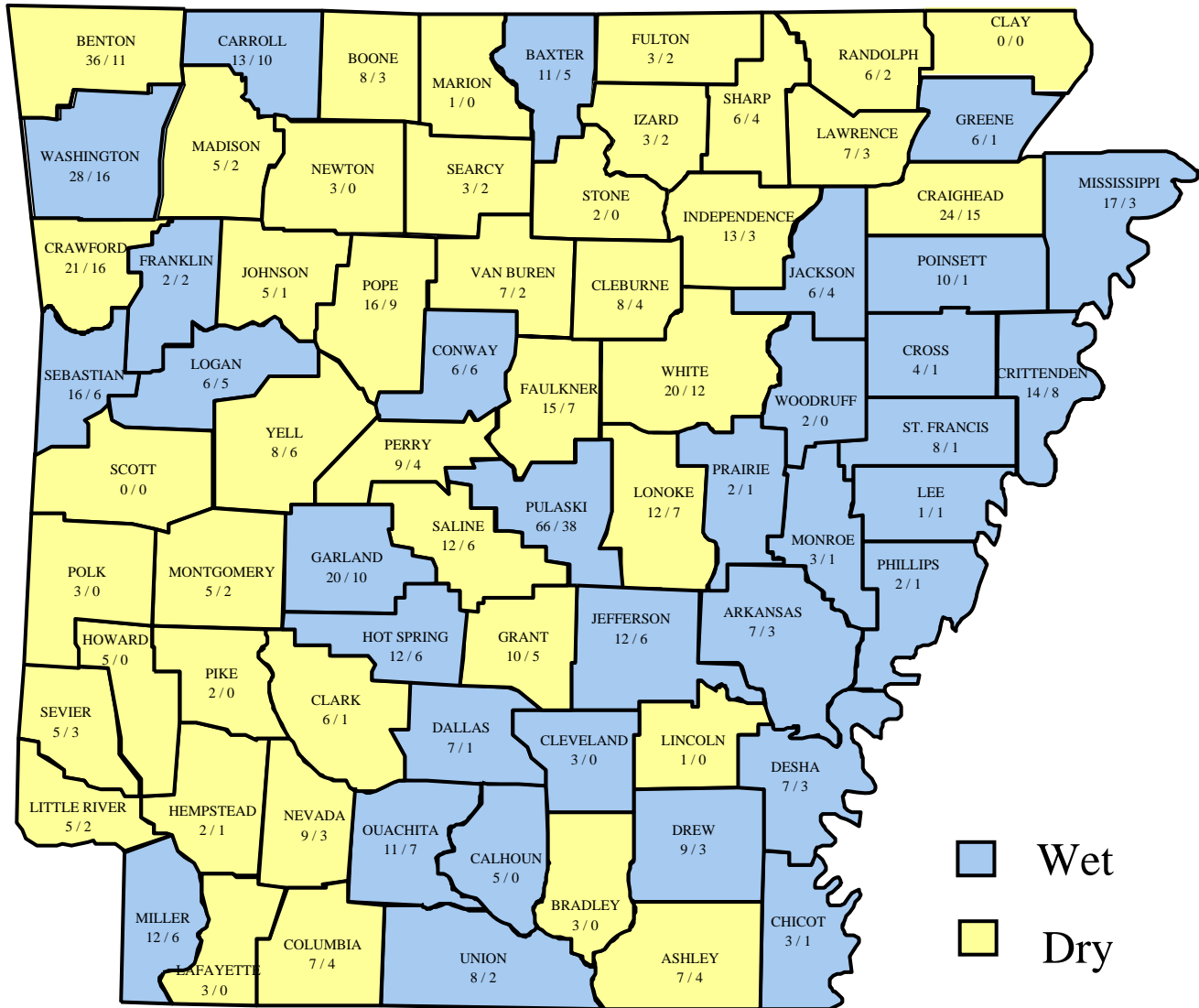
ALCOHOL/DRUG RELATED CRASHES, FATALITIES AND INJURIES BY COUNTY

County	Fatal Crashes	Fatalities	Injury Crashes	Injuries	P.D.O. Crashes	Total Crashes
ARKANSAS	3	3	21	34	4	28
ASHLEY	3	4	26	48	16	45
BAXTER	4	5	31	66	16	51
BENTON	9	11	163	293	63	235
BOONE	2	3	43	85	10	55
BRADLEY	0	0	6	11	1	7
CALHOUN	0	0	3	5	0	3
CARROLL	6	10	44	73	22	72
CHICOT	1	1	8	17	0	9
CLARK	1	1	19	26	5	25
CLAY	0	0	14	25	5	19
CLEBURNE	4	4	23	51	6	33
CLEVELAND	0	0	6	11	2	8
COLUMBIA	3	4	11	31	2	16
CONWAY	4	6	14	26	7	25
CRAIGHEAD	14	15	82	146	53	149
CRAWFORD	13	16	61	134	27	101
CRITTENDEN	6	8	43	96	21	70
CROSS	1	1	15	24	7	23
DALLAS	1	1	3	8	1	5
DESHA	3	3	14	22	2	19
DREW	3	3	10	21	4	17
FAULKNER	6	7	98	163	43	147
FRANKLIN	2	2	6	9	6	14
FULTON	1	2	11	14	5	17
GARLAND	9	10	120	209	68	197
GRANT	3	5	9	31	1	13
GREENE	1	1	30	61	10	41
HEMPSTEAD	1	1	26	45	6	33
HOT SPRING	5	6	16	28	7	28
HOWARD	0	0	9	14	5	14
INDEPENDENCE	2	3	37	66	18	57
IZARD	2	2	8	18	1	11
JACKSON	3	4	14	31	5	22
JEFFERSON	4	6	72	137	34	110
JOHNSON	1	1	29	47	11	41
LAFAYETTE	0	0	4	4	0	4
LAWRENCE	3	3	9	28	1	13

ALCOHOL/DRUG RELATED CRASHES, FATALITIES AND INJURIES BY COUNTY (CONT.)

County	Fatal Crashes	Fatalities	Injury Crashes	Injuries	P.D.O. Crashes	Total Crashes
LEE	1	1	4	7	0	5
LINCOLN	0	0	8	18	2	10
LITTLE RIVER	1	2	10	21	3	14
LOGAN	4	5	28	44	7	39
LONOKE	6	7	46	76	30	82
MADISON	2	2	13	19	2	17
MARION	0	0	16	30	3	19
MILLER	6	6	37	104	20	63
MISSISSIPPI	3	3	36	75	22	61
MONROE	1	1	8	17	2	11
MONTGOMERY	2	2	14	29	1	17
NEVADA	2	3	12	14	3	17
NEWTON	0	0	5	7	1	6
OUACHITA	6	7	24	34	10	40
PERRY	3	4	2	5	1	6
PHILLIPS	1	1	19	36	3	23
PIKE	0	0	10	15	1	11
POINSETT	1	1	22	35	9	32
POLK	0	0	16	29	7	23
POPE	8	9	30	66	21	59
PRAIRIE	1	1	4	4	4	9
PULASKI	32	38	315	578	249	596
RANDOLPH	2	2	17	28	5	24
SALINE	5	6	62	98	37	104
SCOTT	0	0	17	29	3	20
SEARCY	2	2	10	17	1	13
SEBASTIAN	4	6	127	227	80	211
SEVIER	2	3	9	19	0	11
SHARP	4	4	18	36	3	25
ST. FRANCIS	1	1	12	25	3	16
STONE	0	0	5	6	1	6
UNION	2	2	41	78	20	63
VAN BUREN	2	2	19	41	2	23
WASHINGTON	16	16	286	525	156	458
WHITE	11	12	68	127	10	89
WOODRUFF	0	0	2	2	1	3
YELL	6	6	14	26	6	26
TOTALS	261	307	2,544	4,705	1,224	4,029

TOTAL FATALITIES VS ALCOHOL/DRUG RELATED FATALITIES BY COUNTY



Wet
 Dry

County	Number of Counties	Total Fatalities	Alcohol/Drug Related Fatalities	% Alcohol/Drug Related
Wet	32	327	153	47%
Dry	43	338	154	46%