

# ARKANSAS

2007

# TRAFFIC CRASH STATISTICS



Prepared by:  
Arkansas State Police  
Highway Safety Office  
1 State Police Plaza Drive  
Little Rock, AR 72209  
[www.asp.arkansas.gov](http://www.asp.arkansas.gov)

# TABLE OF CONTENTS

## INTRODUCTION

2007 ARKANSAS CRASH SUMMARY.....	2
----------------------------------	---

## FIVE AND TEN YEAR TRENDS

FATAL CRASHES AND RATES.....	3
FATALITIES AND RATES.....	4
FATALITIES BY AGE GROUP, 2003-2007.....	5
NONFATAL INJURIES, RATES AND INJURIES BY SEVERITY.....	6 - 7
TOTAL CRASHES AND RATES.....	8
ALCOHOL/DRUG RELATED FATALITIES VS. TOTAL FATALITIES.....	9
PERCENT ALCOHOL RELATED FATALITIES ARKANSAS VS. NATIONAL.....	10
ALCOHOL/DRUG RELATED CRASHES VS. TOTAL CRASHES.....	11
ALCOHOL/DRUG RELATED FATAL CRASHES VS. TOTAL FATAL CRASHES.....	12
MOTORCYCLE CRASHES.....	13
RAILROAD CRASHES, FATALITIES AND INJURIES.....	14

## CURRENT YEAR (2007)

FATALITIES BY SAFETY RESTRAINT USAGE	
PERCENT USED AND NOT USED.....	15
FATALITIES BY SAFETY RESTRAINT USAGE BY AGE GROUP.....	16
FATALITIES BY SAFETY RESTRAINT USAGE BY AGE.....	17
FATALITIES BY AGE AND PERSON TYPE.....	18
ALCOHOL/DRUG RELATED FATALITIES BY AGE AND PERSON TYPE.....	19
FATAL CRASHES AND FATALITIES BY MONTH.....	20
CRASHES BY TIME OF DAY AND DAY OF WEEK.....	21
ALCOHOL/DRUG RELATED CRASHES BY TIME OF DAY AND DAY OF WEEK.....	22
FATAL CRASHES BY TIME OF DAY AND DAY OF WEEK.....	23
ALCOHOL/DRUG RELATED FATAL CRASHES BY TIME OF DAY AND DAY OF WEEK.....	24
CRASHES BY LIGHTING CONDITIONS.....	25
CRASHES BY ROAD SURFACE CONDITIONS.....	26
CRASHES BY ROAD SYSTEM.....	27
CRASH RATES BY ROAD SYSTEM.....	28
CRASHES BY RURAL/URBAN LOCATION.....	29
CRASHES BY INVESTIGATING AGENCY.....	30
CRASHES BY TYPE OF COLLISION.....	31
VEHICLES INVOLVED BY FIRST HARMFUL EVENT.....	32
DRIVERS BY OPERATOR FACTOR.....	33
DRIVERS IN ALCOHOL/DRUG RELATED CRASHES BY OPERATOR FACTOR.....	34
PEDESTRIAN FATALITIES.....	35 - 36
ARKANSAS' 20 LARGEST CITIES BY POPULATION - CRASHES, FATALITIES AND INJURIES.....	37
ARKANSAS' 20 LARGEST CITIES BY POPULATION - ALCOHOL & OTHER DRUG RELATED CRASHES, FATALITIES AND INJURIES.....	38
<b>COUNTY BREAKDOWNS</b>	
TOTAL CRASHES, FATALITIES AND INJURIES BY COUNTY.....	39 - 40
ALCOHOL/DRUG RELATED CRASHES, FATALITIES AND INJURIES BY COUNTY.....	41 - 42
FATALITIES VS. ALCOHOL/DRUG RELATED FATALITIES BY COUNTY.....	43

# 2007 ARKANSAS CRASH SUMMARY

- **On all public roads in Arkansas during 2007 there were:**

66,393 total crashes reported, a 1.6% decrease from 2006

584 fatal crashes reported, a 2.0% decrease from 2006

650 fatalities reported, a 2.3% decrease from 2006

276 alcohol/drug related fatalities, an 10.1% decrease from 2006

32.4 billion vehicle miles traveled, a 1.1 % increase from 2006

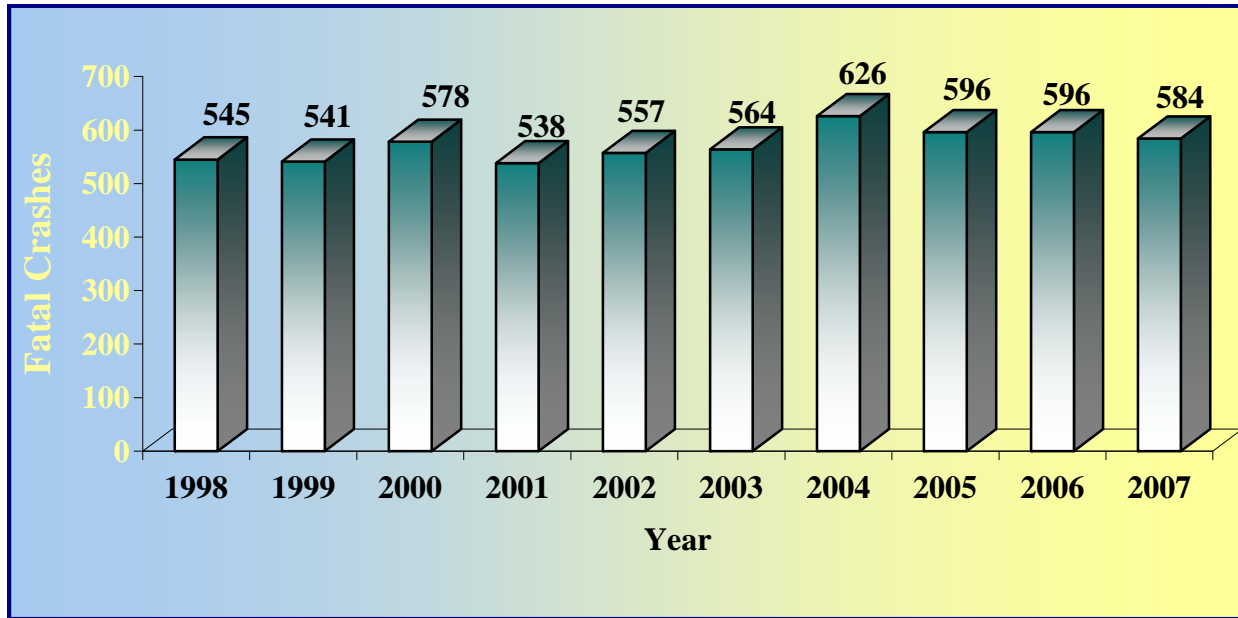
- **The fatality rate decreased from 2.1 fatalities in 2006 to 2.0 fatalities per 100 MVM\* traveled**
- **The fatal crash rate decreased from 1.9 in 2006 to 1.8 crashes per 100 MVM\* traveled.**

\* Million vehicle miles

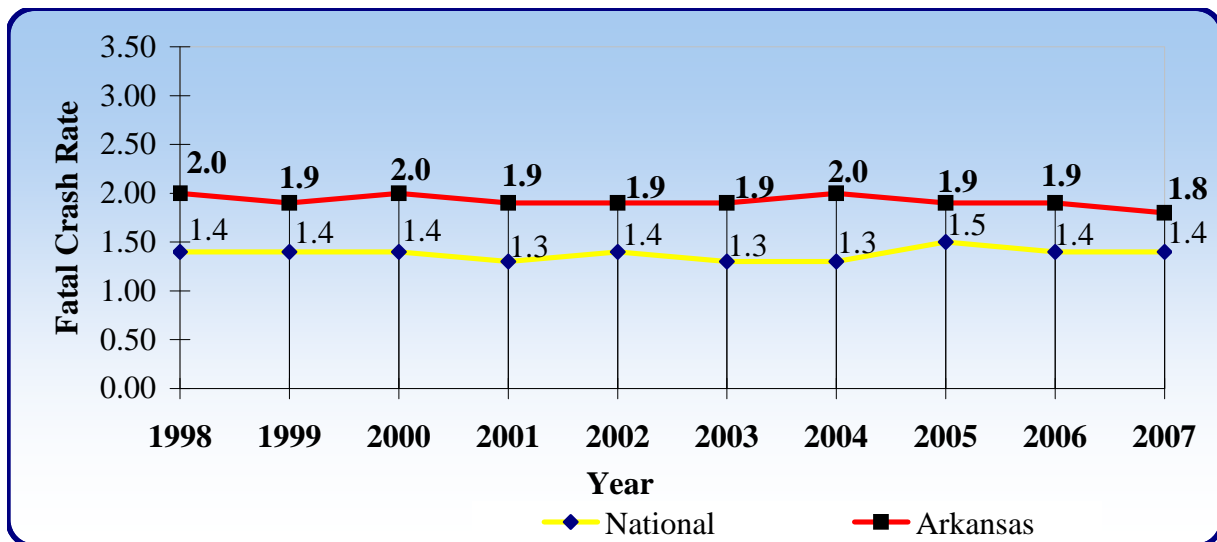
# FATAL CRASHES AND RATES

## 10 YEAR TRENDS

### STATEWIDE FATAL CRASHES



### FATAL CRASH RATE (FATAL CRASHES PER 100 MVM\*)

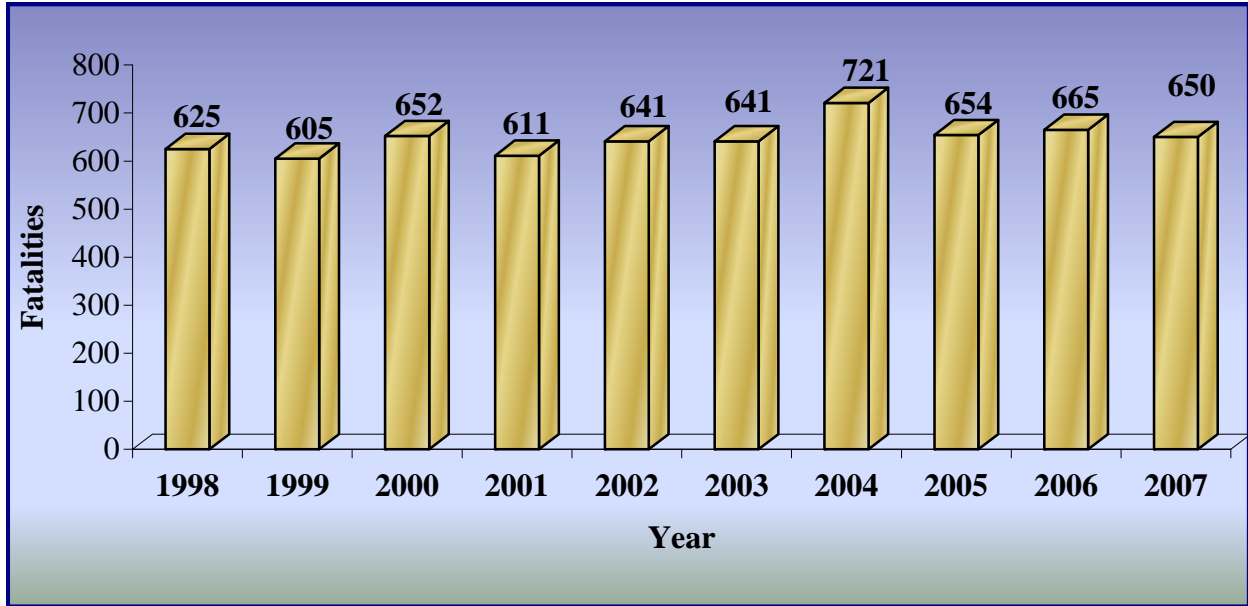


\* Million vehicle miles

# FATALITIES AND RATES

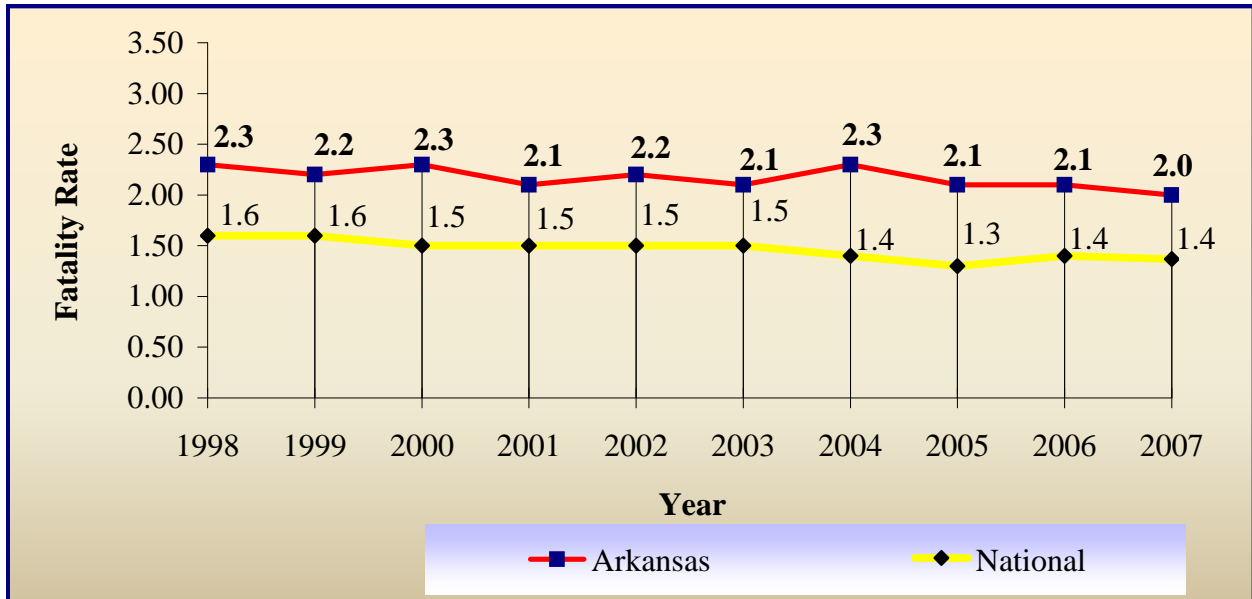
## 10 YEAR TRENDS

### STATEWIDE FATALITIES



FATALITY RATE (FATALITIES PER 100 MVM\*)

### ARKANSAS FATALITY RATE (FATALITIES PER 100 MVM\*)

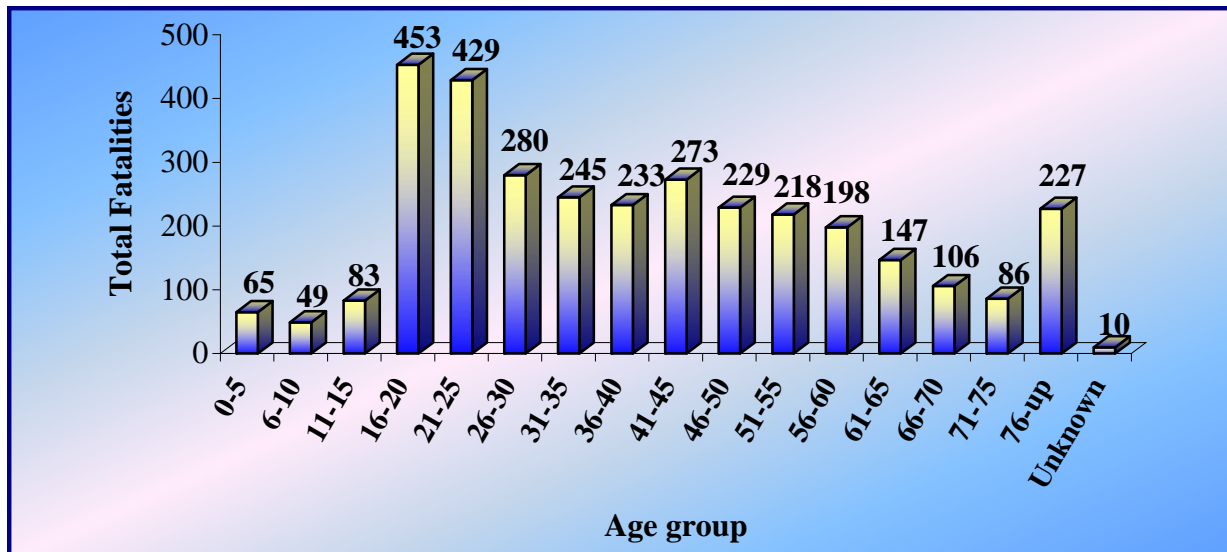


\* Million vehicle miles

# FATALITIES BY AGE GROUP, 2003-2007

## 5 YEAR TRENDS

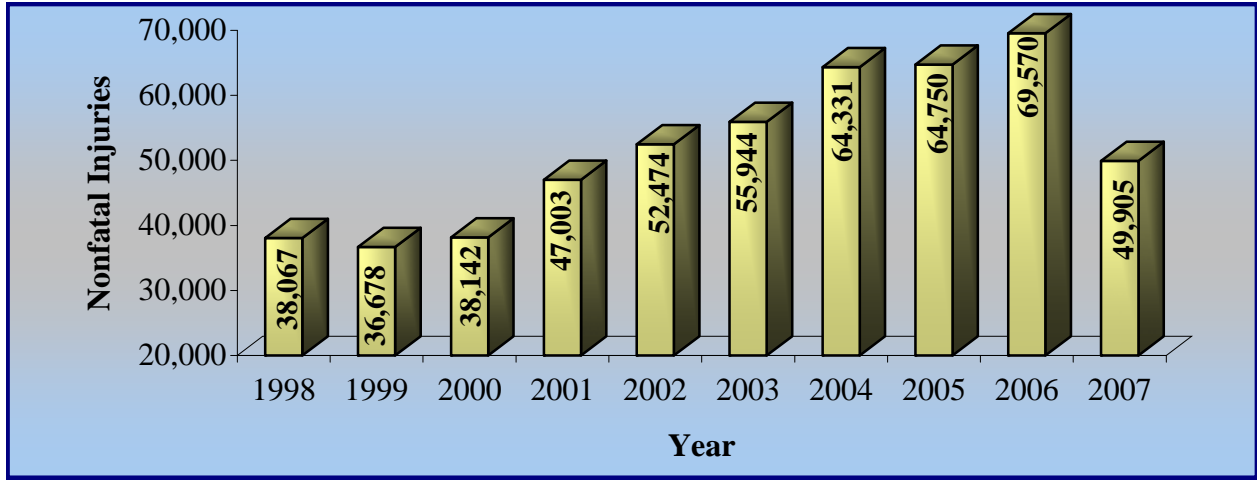
Age Group	2003	2004	2005	2006	2007	Total Fatalities
0-5	17	13	10	17	8	65
6-10	11	17	5	9	7	49
11-15	18	21	15	14	15	83
16-20	77	101	86	97	92	453
21-25	86	87	87	88	81	429
26-30	47	65	51	61	56	280
31-35	44	51	54	54	42	245
36-40	56	50	41	50	36	233
41-45	59	63	44	61	46	273
46-50	41	66	42	31	49	229
51-55	46	42	42	42	46	218
56-60	35	29	40	43	51	198
61-65	28	21	33	29	36	147
66-70	19	22	30	18	17	106
71-75	11	18	23	17	17	86
76-up	46	54	49	33	45	227
Unknown	0	1	2	1	6	10
<b>Total</b>	<b>641</b>	<b>721</b>	<b>654</b>	<b>665</b>	<b>650</b>	<b>3,331</b>



# NONFATAL INJURIES AND RATES

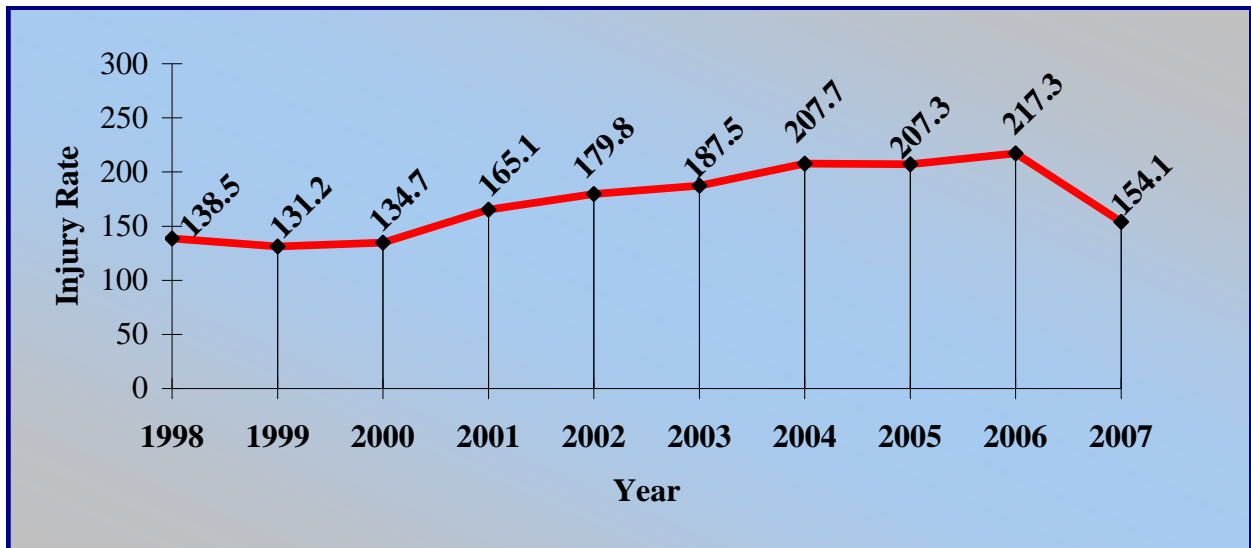
## 10 YEAR TRENDS

### STATEWIDE NONFATAL INJURIES



Note: The greatest increase in total number of nonfatal injuries in 2001 thru 2006 is due to an increase in police reported possible injuries.

### INJURY RATE (INJURIES PER 100 MVM\*)

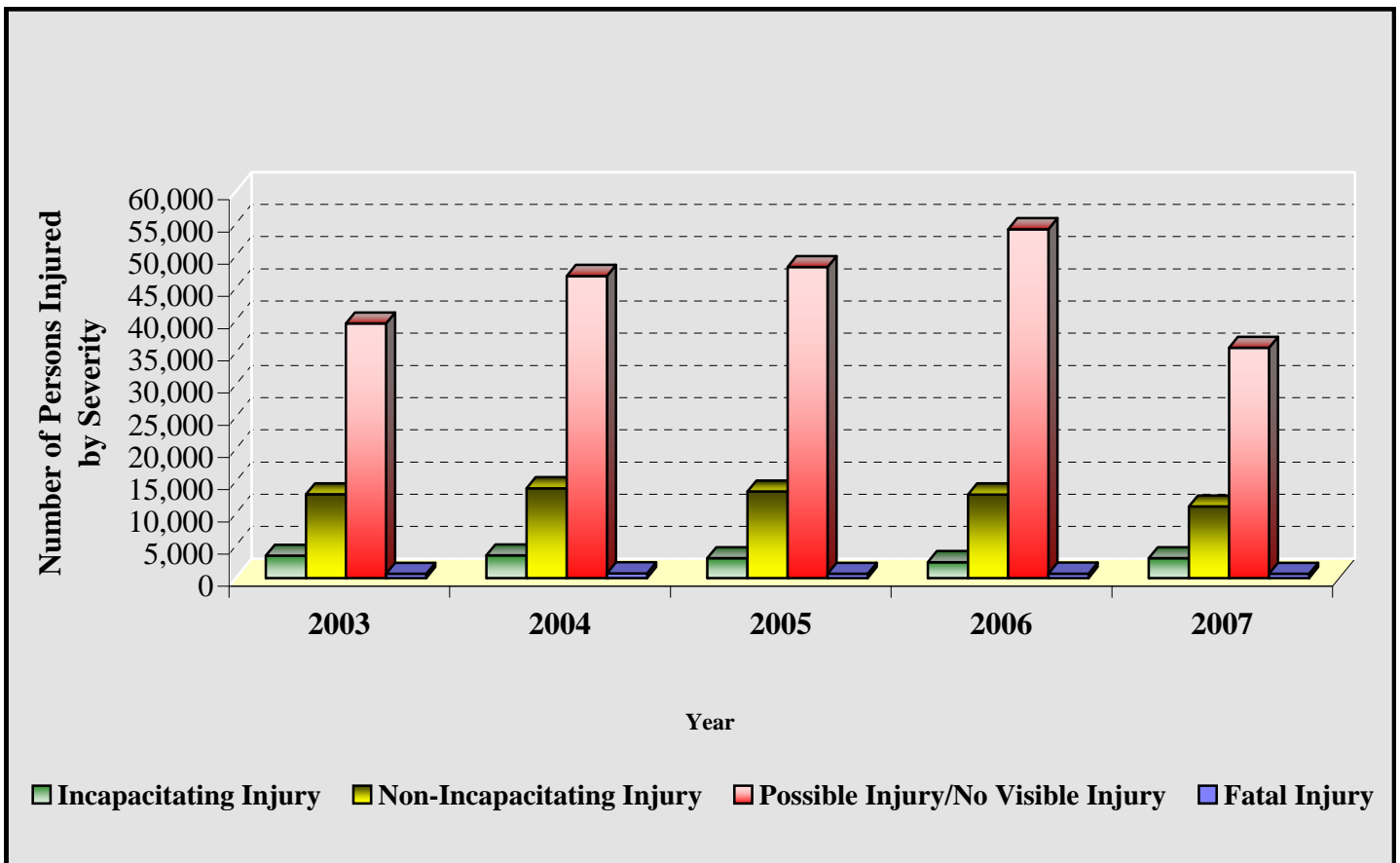


\* Million vehicle miles

# PERSONS INVOLVED IN CRASHES BY INJURY SEVERITY

5 YEAR TREND

Injury Description	Number of Persons				
	2003	2004	2005	2006	2007
Fatal Injury	641	721	654	665	650
Incapacitating Injury	3,462	3,508	3,059	2,461	3,072
Non-Incapacitating Injury	12,977	13,927	13,414	12,953	11,104
Possible Injury/No Visible Injury	39,505	46,896	48,277	54,156	35,729
No Injury/Property Damage Only	130,545	131,148	118,396	106,378	122,020

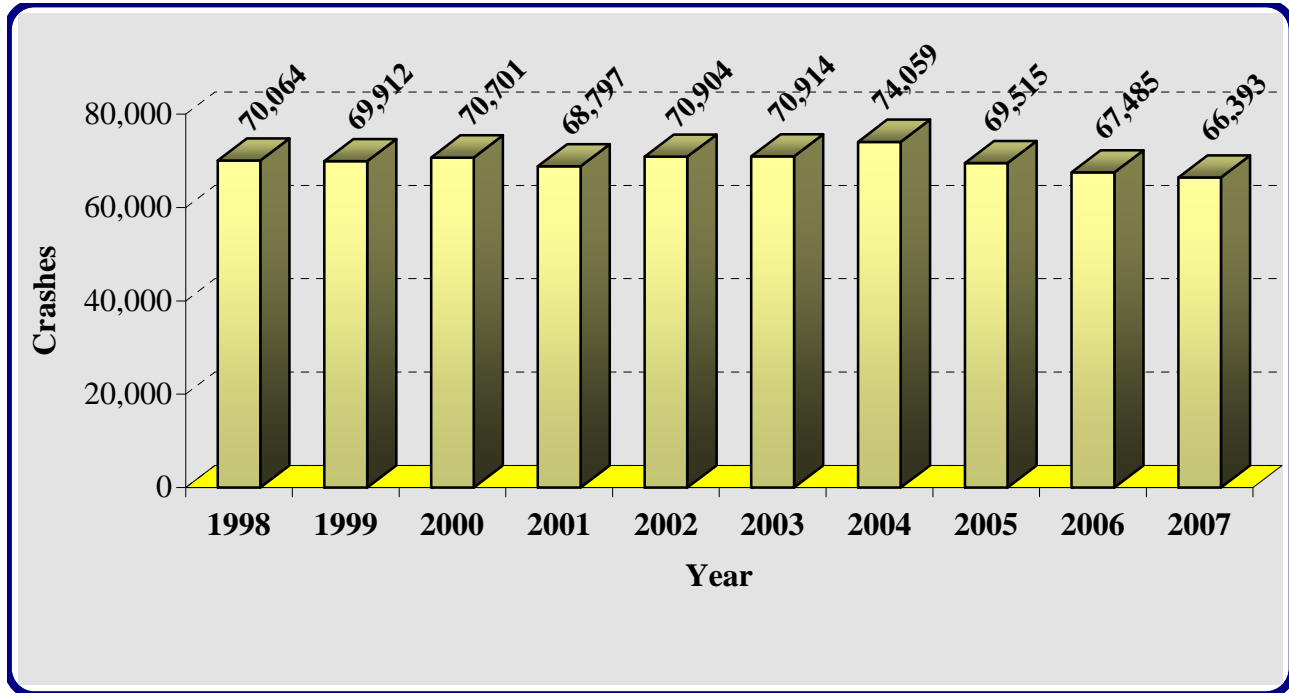




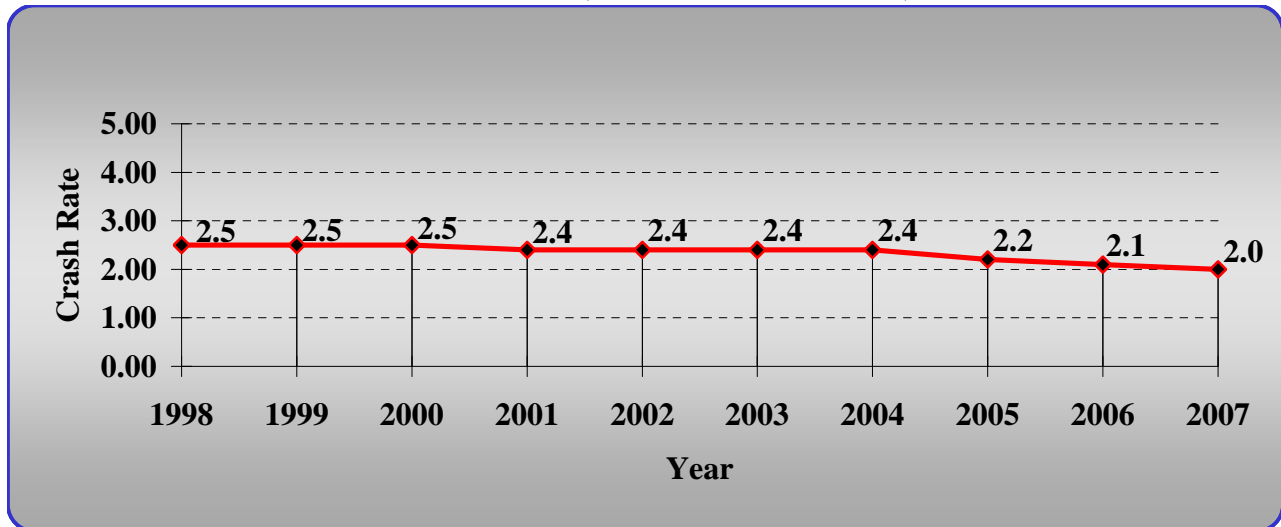
# TOTAL CRASHES AND RATES

## 10 YEAR TRENDS

### STATEWIDE CRASHES



### CRASH RATE (CRASHES PER MVM\*)

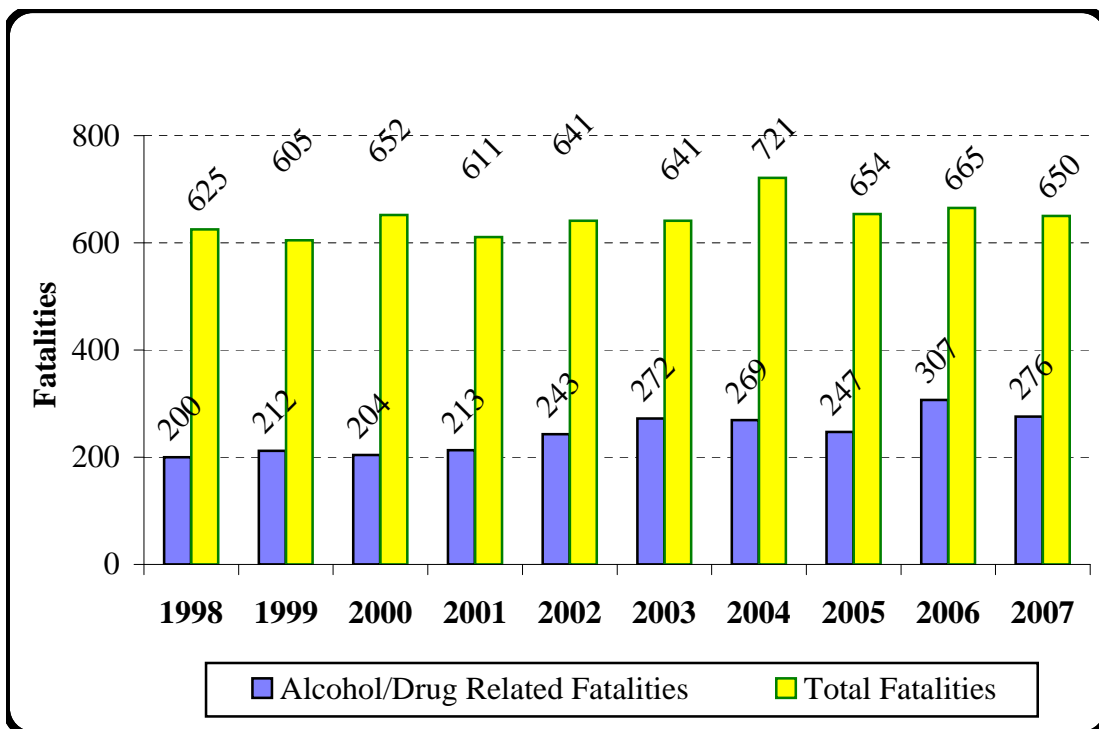


\* Million vehicle miles

# ALCOHOL/DRUG RELATED FATALITIES VS. TOTAL FATALITIES

10 YEAR TRENDS

Year	Alcohol/Drug Related Fatalities	Total Fatalities	Alcohol/Drug Fatalities as a % of Total
1998	200	625	32%
1999	212	605	35%
2000	204	652	31%
2001	213	611	35%
2002	243	641	38%
2003	272	641	42%
2004	269	721	37%
2005	247	654	38%
2006	307	665	46%
2007	276	650	42%

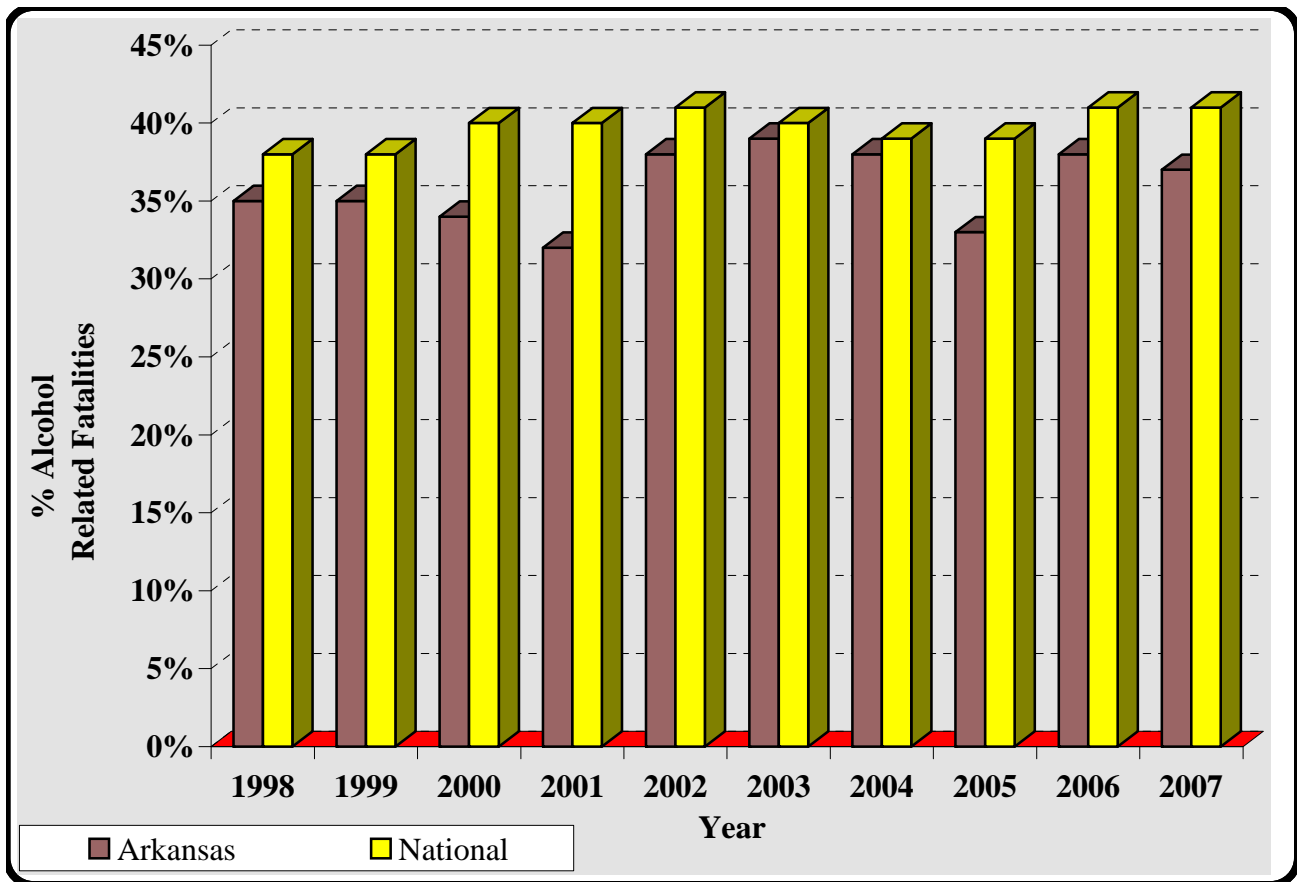


# PERCENT ALCOHOL RELATED FATALITIES ARKANSAS VS. NATIONAL

## 10 YEAR TRENDS

Year	Arkansas	National
1998	35%	38%
1999	35%	38%
2000	34%	40%
2001	32%	40%
2002	38%	41%
2003	39%	40%
2004	38%	39%
2005	33%	39%
2006	38%	41%
2007	37%	41%

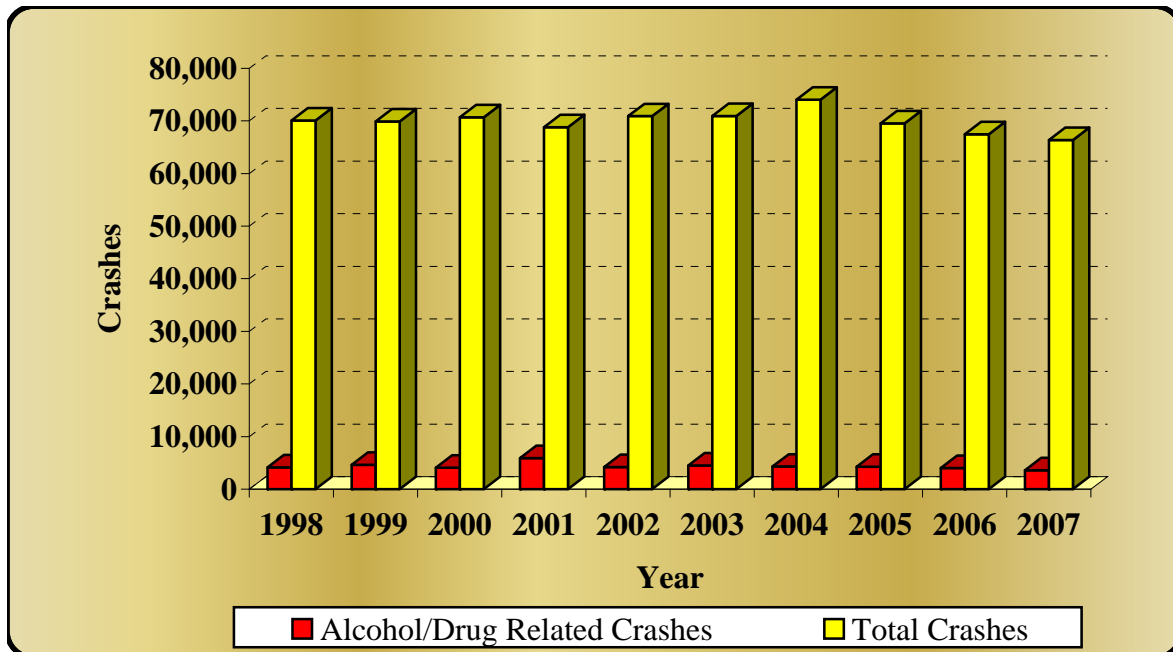
Note: All numbers from Fatality Analysis Reporting System (FARS).



# ALCOHOL/DRUG RELATED CRASHES VS. TOTAL CRASHES

## 10 YEAR TRENDS

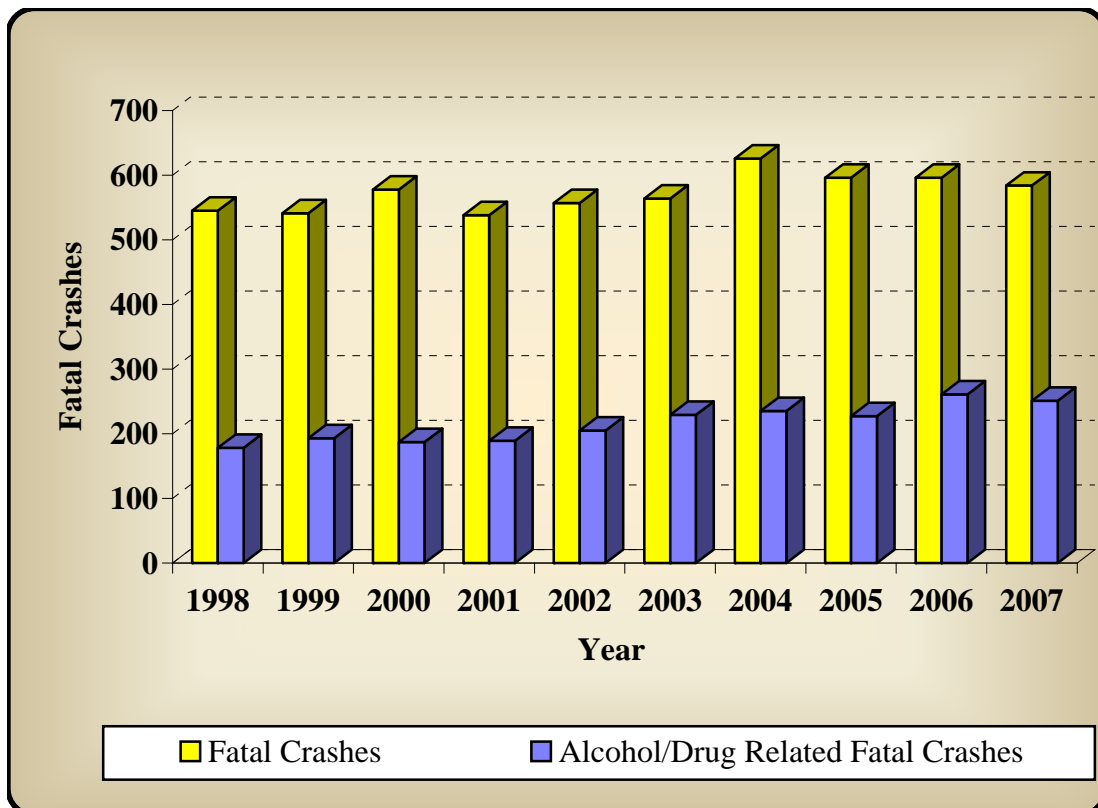
Year	Alcohol/Drug Related Crashes	Total Crashes	Alcohol/Drug as a % of Total Crashes
1998	4,125	70,064	6%
1999	4,645	69,912	7%
2000	4,097	70,701	6%
2001	5,912	68,797	9%
2002	4,203	70,904	6%
2003	4,503	70,914	6%
2004	4,293	74,059	6%
2005	4,266	69,515	6%
2006	4,029	67,485	6%
2007	3,604	66,393	5%



# ALCOHOL/DRUG RELATED FATAL CRASHES VS. TOTAL FATAL CRASHES

10 YEAR TRENDS

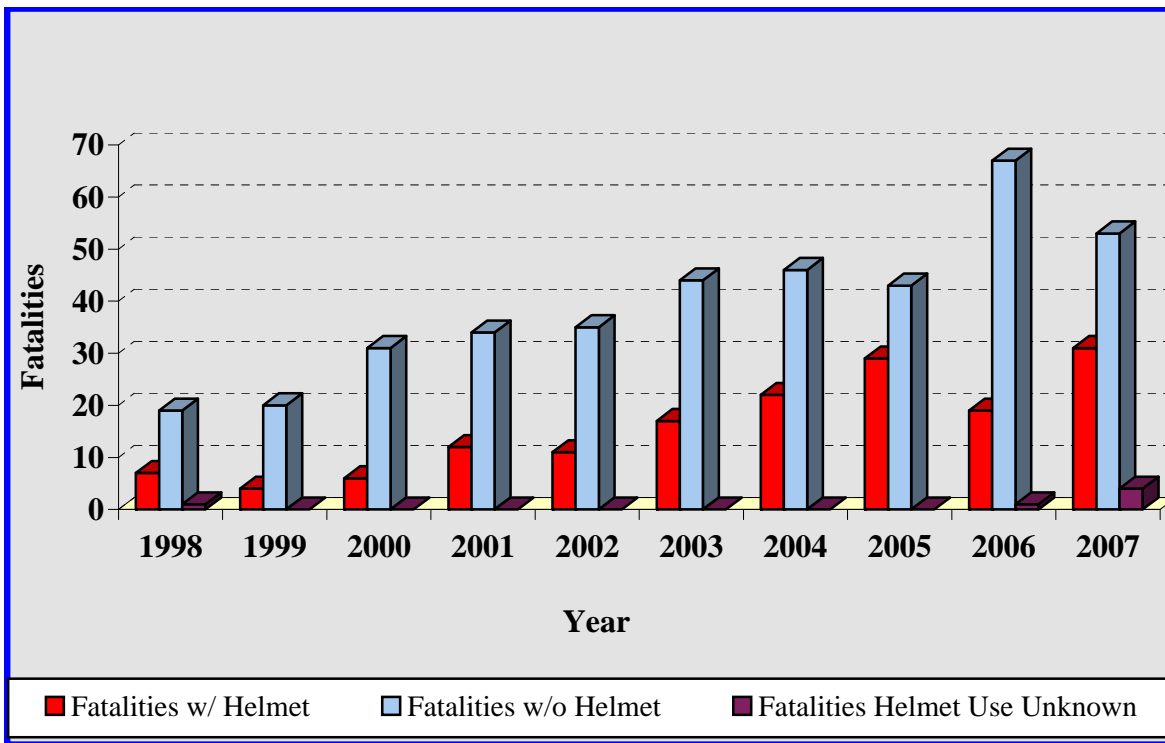
Year	Alcohol/Drug Related Fatal Crashes	Fatal Crashes	Alcohol/Drug Fatal Crashes as a % of Total
1998	178	545	33%
1999	193	541	36%
2000	187	578	32%
2001	189	538	35%
2002	205	557	37%
2003	229	564	41%
2004	235	626	38%
2005	227	596	38%
2006	261	596	44%
2007	251	584	43%



# MOTORCYCLE CRASHES

## 10 YEAR TRENDS

Year	Total Crashes	Non Fatal Injuries	Fatal Crashes	Total Fatalities	Fatalities w/ Helmet	Fatalities w/o Helmet	Fatalities Helmet Use Unknown
1998	625	541	26	27	7	19	1
1999	647	588	23	24	4	20	0
2000	871	744	37	37	6	31	0
2001	1,032	919	41	46	12	34	0
2002	1,041	979	46	46	11	35	0
2003	1,117	1,002	57	61	17	44	0
2004	1,403	1,360	66	68	22	46	0
2005	1,706	1,590	72	72	29	43	0
2006	1,698	1,584	83	87	19	67	1
2007	1,776	1,597	87	88	31	53	4

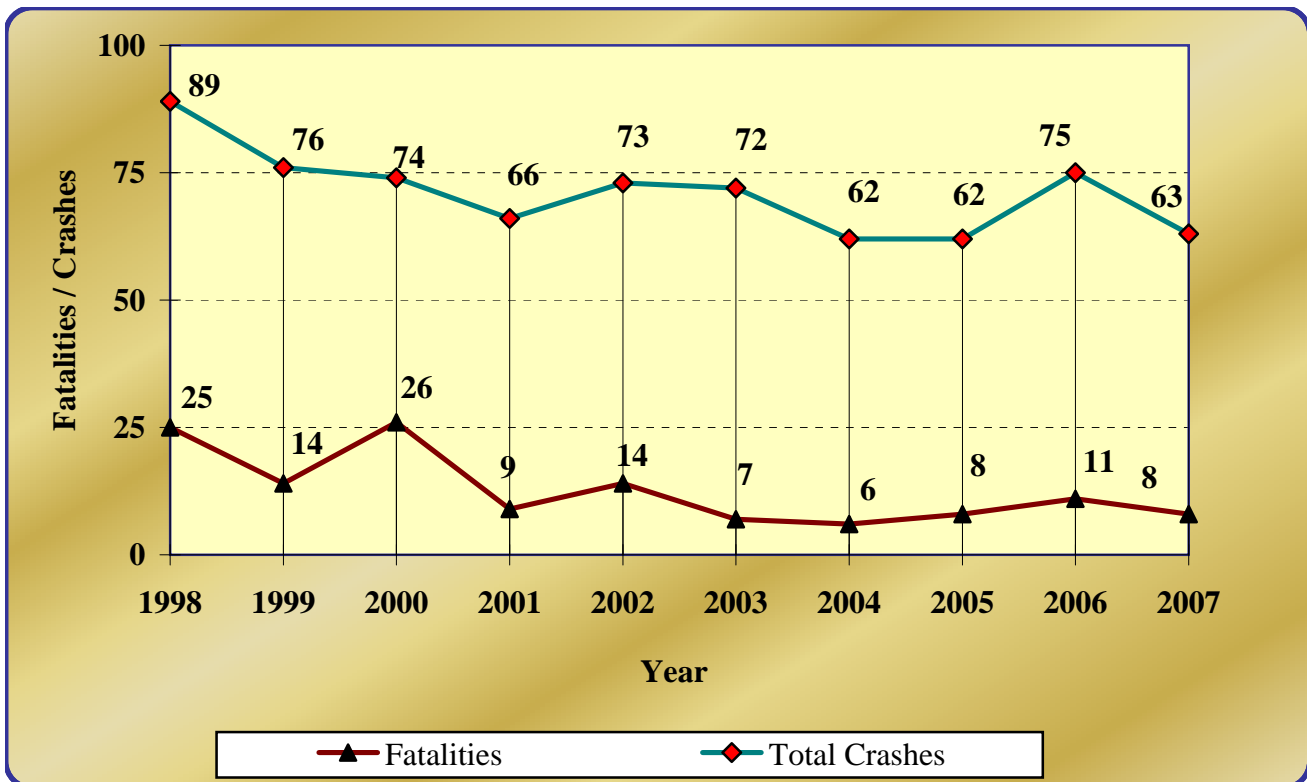


# RAILROAD CRASHES, FATALITIES AND INJURIES

## 10 YEAR TRENDS

Year	Fatal Crashes	Nonfatal Injury Crashes	P.D.O. * Crashes	Total Crashes	Fatalities	Nonfatal Injuries
1998	20	30	39	89	25	49
1999	12	25	39	76	14	40
2000	17	21	36	74	26	36
2001	9	25	32	66	9	36
2002	13	30	30	73	14	42
2003	5	32	35	72	7	41
2004	6	25	31	62	6	33
2005	6	26	30	62	8	37
2006	11	30	34	75	11	45
2007	7	28	28	63	8	37

\* Property Damage Only

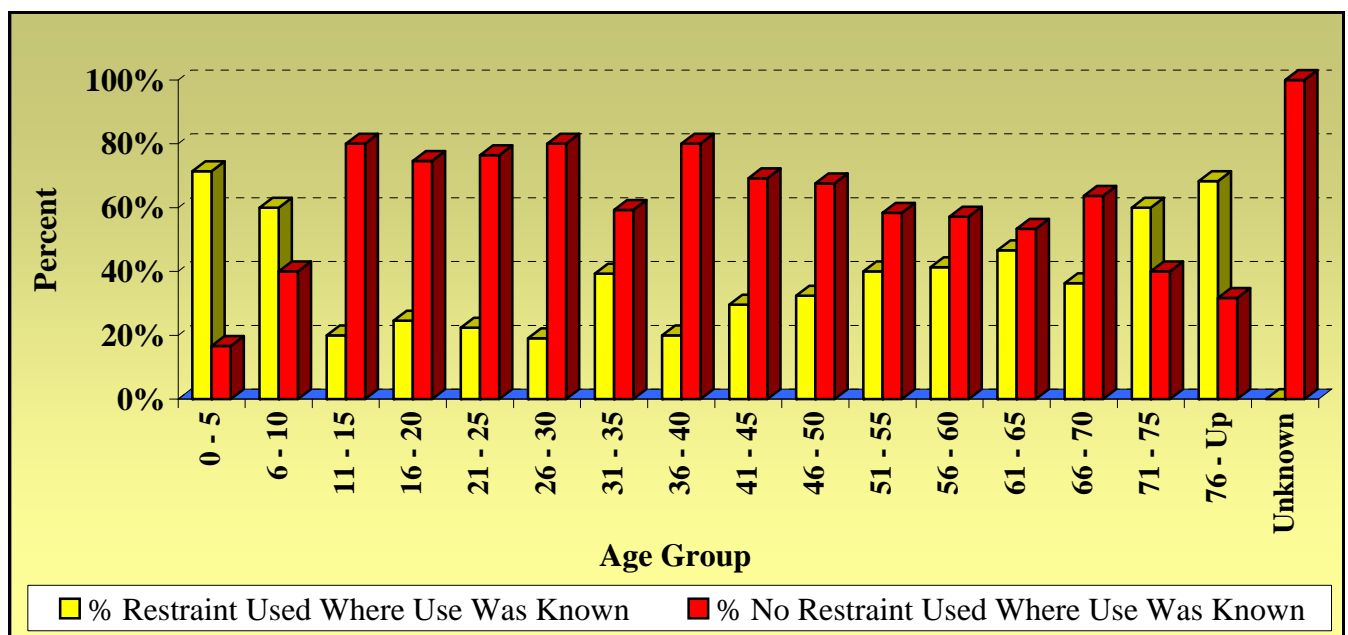


# FATALITIES BY SAFETY RESTRAINT USAGE, PERCENT USED AND NOT USED

(Non-Motorist and Motorcycle Fatalities not included)

Age Group	Restraint Used	No Restraint Used	Unknown	% Restraint Used *	% No Restraint Used *
0 - 5	5	1	0	71%	17%
6 - 10	3	2	2	60%	40%
11 - 15	2	8	0	20%	80%
16 - 20	17	50	14	25%	75%
21 - 25	13	42	10	22%	76%
26 - 30	8	32	7	19%	80%
31 - 35	11	16	4	39%	59%
36 - 40	4	16	3	20%	80%
41 - 45	8	18	6	30%	69%
46 - 50	12	25	2	32%	68%
51 - 55	10	14	5	40%	58%
56 - 60	12	16	7	41%	57%
61 - 65	14	16	4	47%	53%
66 - 70	4	7	4	36%	64%
71 - 75	6	4	2	60%	40%
76 - Up	28	13	2	68%	32%
Unknown	0	1	3	0%	100%
<b>Total</b>	<b>157</b>	<b>281</b>	<b>75</b>	<b>35%</b>	<b>64%</b>

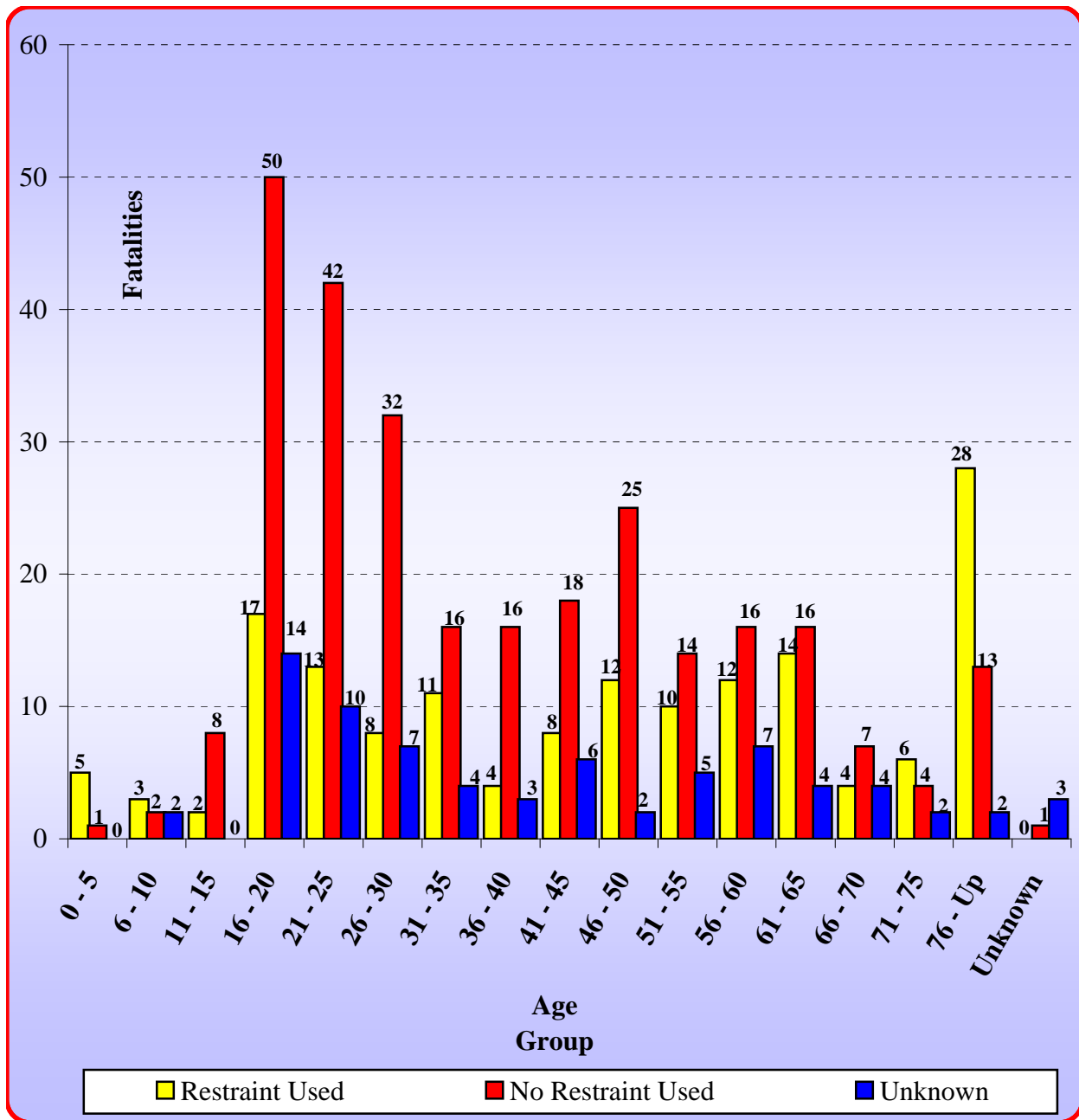
\* Percentage calculated using only fatalities where restraint use was known.





# FATALITIES BY SAFETY RESTRAINT USAGE BY AGE GROUP

(Motorcyclists and non-motorists are excluded.)



# FATALITIES BY SAFETY RESTRAINT BY AGE

(Motorcyclists and non-motorists are excluded.)

Age	None Used	Child Safety Seat	Lap And/Or Shoulder Belt	Unknown	Age	None Used	Child Safety Seat	Lap And/Or Shoulder Belt	Unknown
1	1	0	0	0	49	5	0	2	0
2	0	1	0	0	50	3	0	5	0
3	0	1	0	0	51	2	0	2	1
4	0	1	1	0	52	4	0	1	0
5	0	0	1	0	53	2	0	2	3
7	2	0	1	1	54	3	0	2	0
9	0	0	2	0	55	3	0	3	1
10	0	0	0	1	56	1	0	4	0
14	5	0	0	0	57	4	0	2	1
15	3	0	2	0	58	6	0	1	2
16	10	0	2	0	59	3	0	1	2
17	4	0	1	4	60	2	0	4	2
18	17	0	4	3	61	2	0	1	1
19	7	0	7	5	62	3	0	2	0
20	12	0	3	2	63	4	0	2	2
21	12	0	3	2	64	3	0	4	0
22	13	0	4	0	65	4	0	5	1
23	7	0	3	2	66	2	0	0	2
24	3	0	1	5	67	1	0	0	0
25	7	0	2	1	68	1	0	4	0
26	10	0	2	2	69	3	0	0	2
27	4	0	1	1	71	0	0	2	0
28	8	0	2	3	72	0	0	0	1
29	6	0	0	0	73	1	0	3	1
30	4	0	3	1	74	0	0	1	0
31	3	0	2	2	75	3	0	0	0
32	2	0	2	1	76	0	0	1	0
33	3	0	0	0	77	1	0	3	0
34	4	0	2	0	78	2	0	3	0
35	4	0	5	1	79	3	0	2	0
36	3	0	0	0	80	0	0	4	0
37	5	0	2	1	81	0	0	2	0
38	2	0	1	1	82	0	0	3	0
39	4	0	1	1	83	0	0	2	0
40	2	0	0	0	84	0	0	1	1
41	2	0	2	1	85	4	0	2	0
42	5	0	2	0	86	0	0	2	0
43	5	0	0	2	87	1	0	1	0
44	1	0	2	2	88	1	0	0	1
45	5	0	2	1	90	1	0	0	0
46	6	0	1	1	91	0	0	2	0
47	5	0	3	0	Unknown	1	0	0	3
48	6	0	5	0	Total	281	3	154	75

# FATALITIES BY AGE AND PERSON TYPE

Age	Driver	Passenger	Non-Motorist		Age	Driver	Passenger	Non-Motorist
1	0	1	0		48	9	1	1
2	0	1	0		49	6	1	0
3	0	2	1		50	11	1	1
4	0	2	0		51	9	2	3
5	0	1	0		52	5	2	0
6	0	4	0		53	6	2	0
7	0	2	0		54	5	2	2
8	0	1	0		55	6	1	1
9	0	0	1		56	5	2	3
11	2	4	1		57	7	0	1
12	0	5	2		58	12	1	0
13	8	4	1		59	6	0	2
14	8	2	1		60	10	2	0
15	17	9	0		61	3	1	0
16	18	4	1		62	5	0	0
17	14	4	1		63	6	2	1
18	13	6	0		64	5	2	0
19	19	3	1		65	7	4	0
20	13	1	0		66	2	2	0
21	8	2	2		67	1	0	0
22	9	4	0		68	3	2	0
23	10	4	2		69	7	0	0
24	8	1	1		71	3	0	0
25	10	4	0		72	0	1	0
26	6	1	0		73	5	0	0
27	8	1	0		74	2	0	3
28	6	1	0		75	3	0	0
29	5	2	1		76	1	0	1
30	4	1	0		77	3	1	0
31	5	1	2		78	5	0	1
32	12	1	1		79	2	3	0
33	3	2	0		80	2	2	0
34	8	2	0		81	2	0	0
35	7	0	1		82	2	1	0
36	7	1	2		83	1	1	0
37	2	0	1		84	2	0	0
38	3	2	0		85	3	3	0
39	11	0	0		86	2	0	0
40	8	0	1		87	1	1	0
41	8	0	1		88	2	0	0
42	9	1	2		90	0	1	0
43	6	2	0		91	1	1	0
44	8	2	0		Unknown	2	2	2
45	0	0	0					
46	0	0	0					
					<b>Total</b>	<b>463</b>	<b>138</b>	<b>49</b>

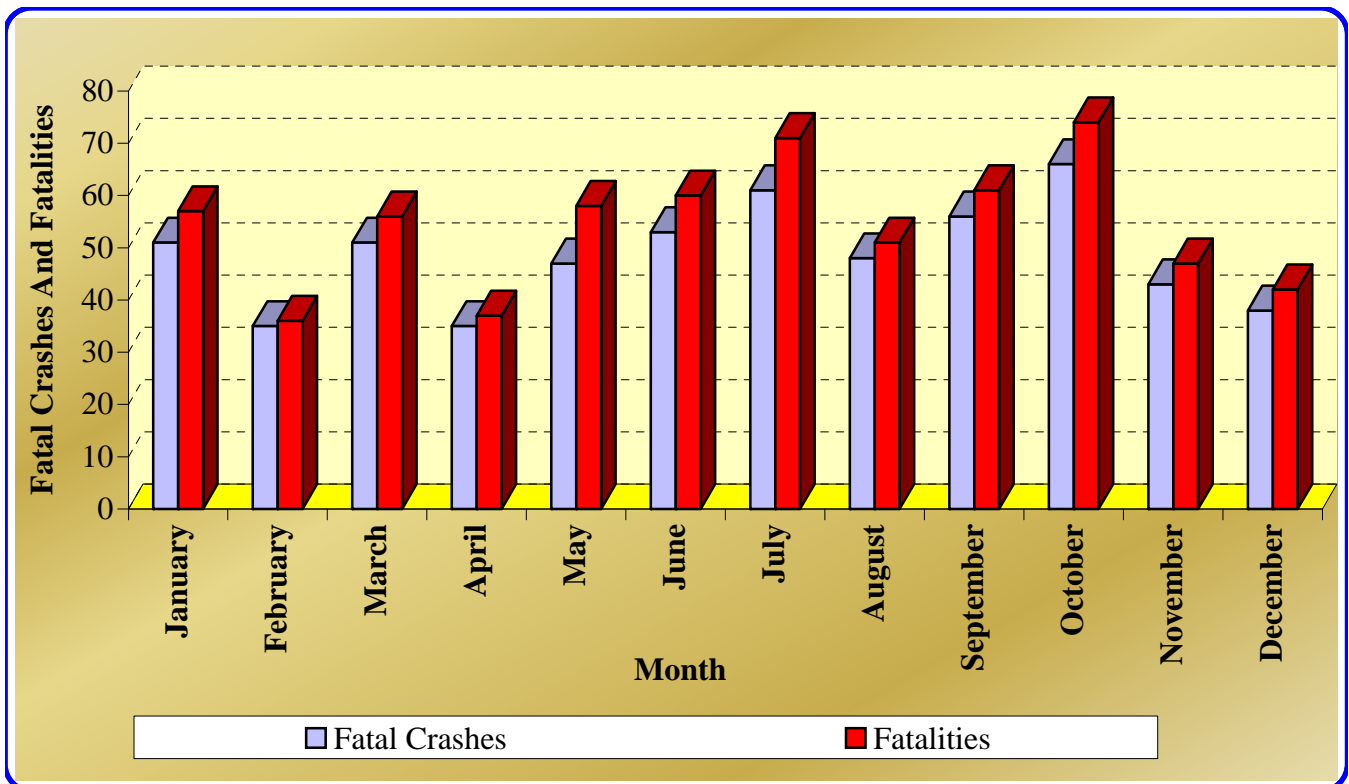
# ALCOHOL/DRUG RELATED FATALITIES BY AGE AND PERSON TYPE

Age	Driver	Passenger	Non-Motorist
1	0	2	0
3	0	1	0
4	1	1	1
5	0	2	0
9	3	2	1
12	2	0	0
15	10	5	0
17	9	3	0
18	8	3	0
19	4	3	0
20	11	1	1
21	5	0	0
22	3	0	0
23	6	4	0
24	8	2	1
25	3	0	1
26	8	2	0
27	3	1	0
28	5	1	0
29	5	1	0
30	2	2	0
31	4	0	0
32	1	1	1
33	5	0	1
34	2	1	0
35	6	1	0
36	3	0	0
37	5	0	1
38	2	0	1
39	2	1	0
40	5	0	0
41	5	0	1
42	5	0	0
44	7	0	0

Age	Driver	Passenger	Non-Motorist
45	3	1	0
46	4	2	0
47	3	0	0
48	3	0	0
49	5	1	0
50	7	0	0
51	4	1	0
52	2	1	0
53	1	0	0
54	3	1	1
55	2	0	1
56	1	0	2
57	2	0	0
58	5	0	0
59	1	0	1
60	4	1	0
61	1	0	0
62	1	0	0
63	2	0	1
64	2	0	0
65	1	2	0
66	1	0	0
68	1	0	0
69	1	0	0
71	1	0	0
74	0	0	1
77	1	0	0
82	1	0	0
85	1	0	0
86	1	0	0
90	0	1	0
Unknown	0	1	1
Total	206	52	18

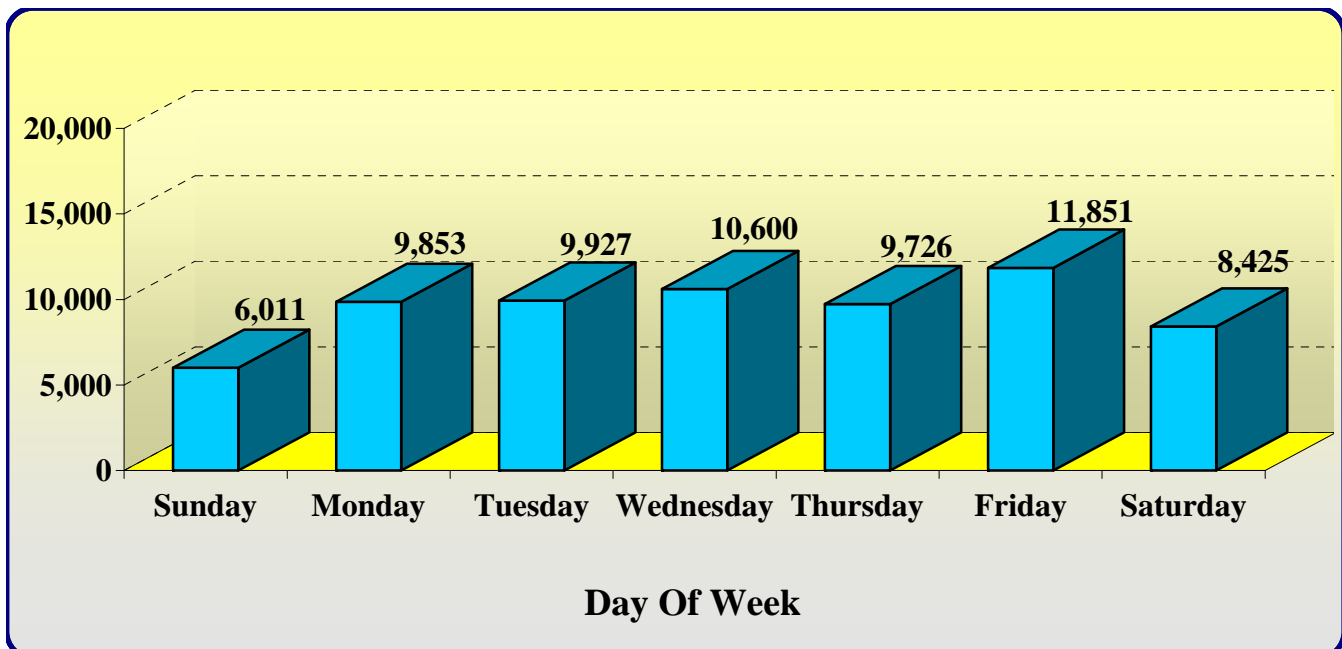
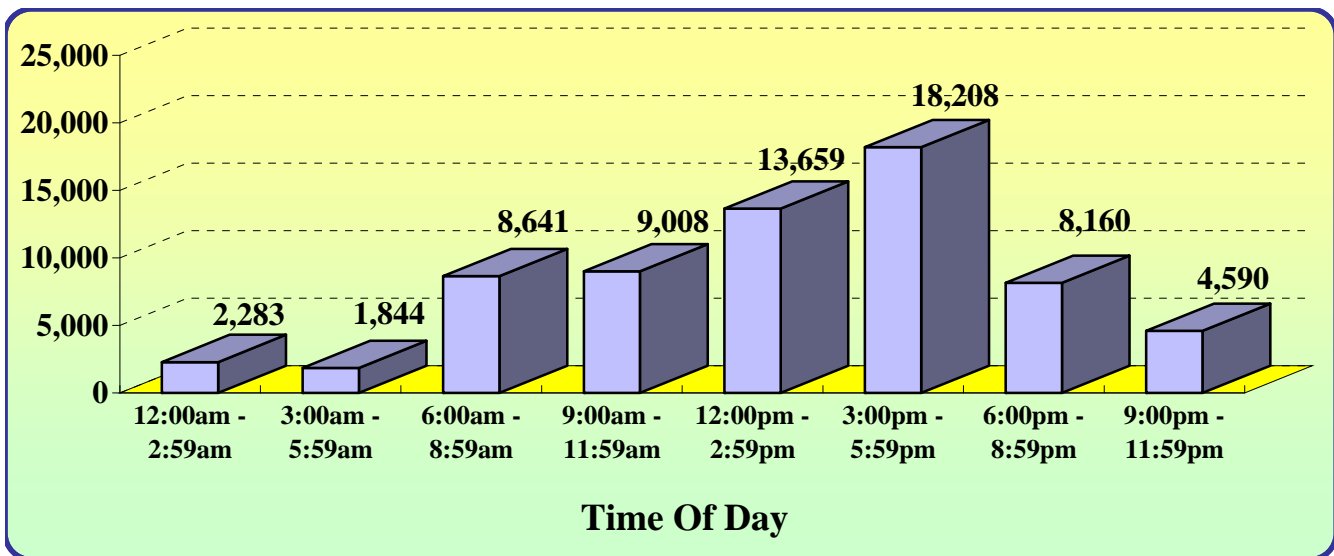
# FATAL CRASHES AND FATALITIES BY MONTH

Month	Fatal Crashes	Fatalities
January	51	57
February	35	36
March	51	56
April	35	37
May	47	58
June	53	60
July	61	71
August	48	51
September	56	61
October	66	74
November	43	47
December	38	42
<b>Total</b>	<b>584</b>	<b>650</b>



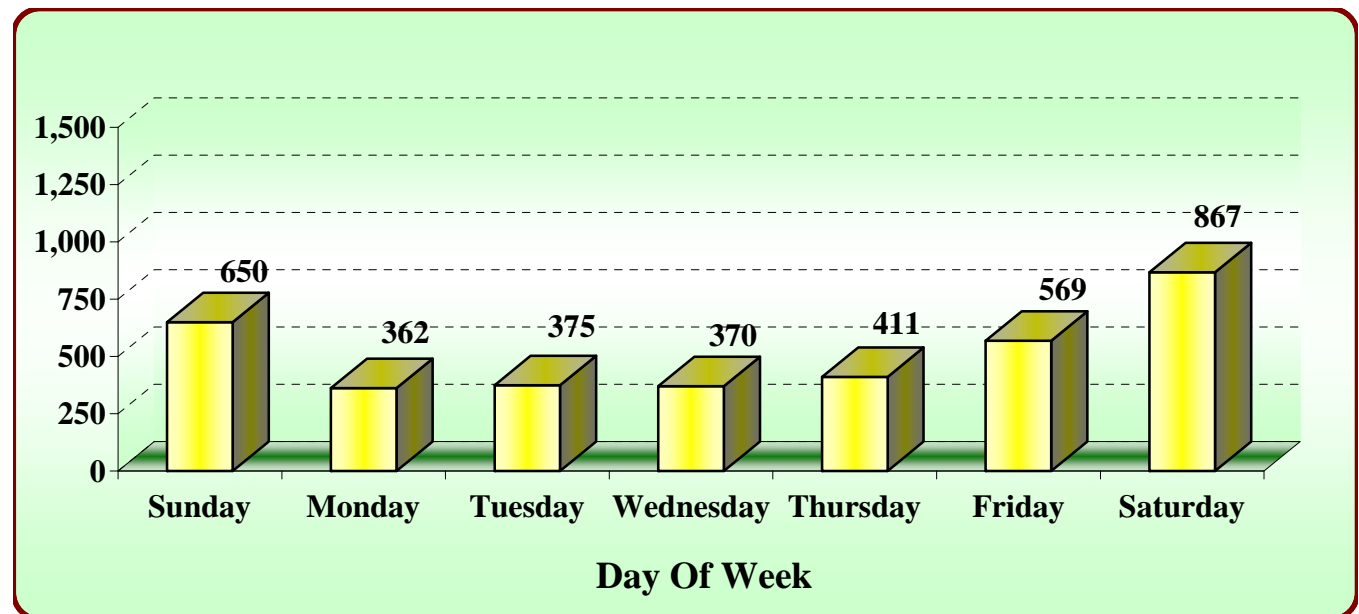
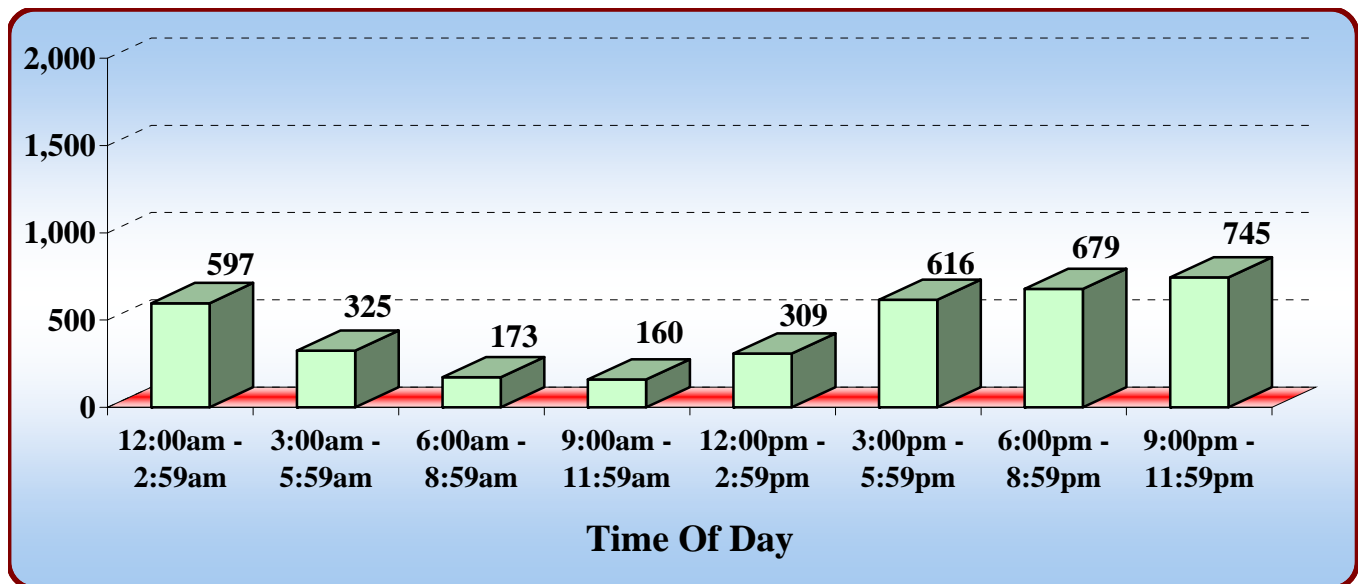
## CRASHES BY TIME OF DAY AND DAY OF WEEK

Time of Day	Sunday	Monday	Tuesday	Wednesday	Thursday	Friday	Saturday	Total
12:00am - 2:59am	554	184	180	246	243	287	589	2,283
3:00am - 5:59am	405	185	178	195	236	250	395	1,844
6:00am - 8:59am	387	1,522	1,538	1,657	1,497	1,482	558	8,641
9:00am - 11:59am	744	1,382	1,318	1,428	1,268	1,558	1,310	9,008
12:00pm - 2:59pm	1,278	2,080	2,022	2,193	1,943	2,426	1,717	13,659
3:00pm - 5:59pm	1,245	2,908	3,034	3,061	2,832	3,402	1,726	18,208
6:00pm - 8:59pm	907	1,071	1,118	1,201	1,156	1,465	1,242	8,160
9:00pm - 11:59pm	491	521	539	619	551	981	888	4,590
<b>Total</b>	<b>6,011</b>	<b>9,853</b>	<b>9,927</b>	<b>10,600</b>	<b>9,726</b>	<b>11,851</b>	<b>8,425</b>	<b>66,393</b>



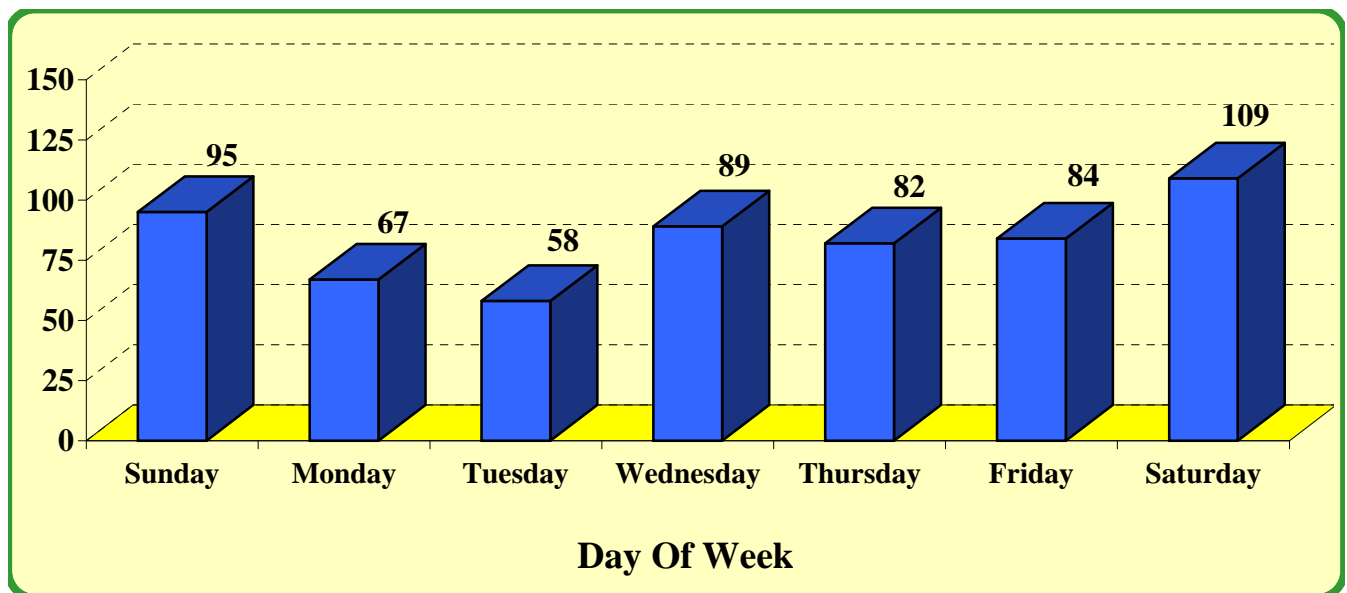
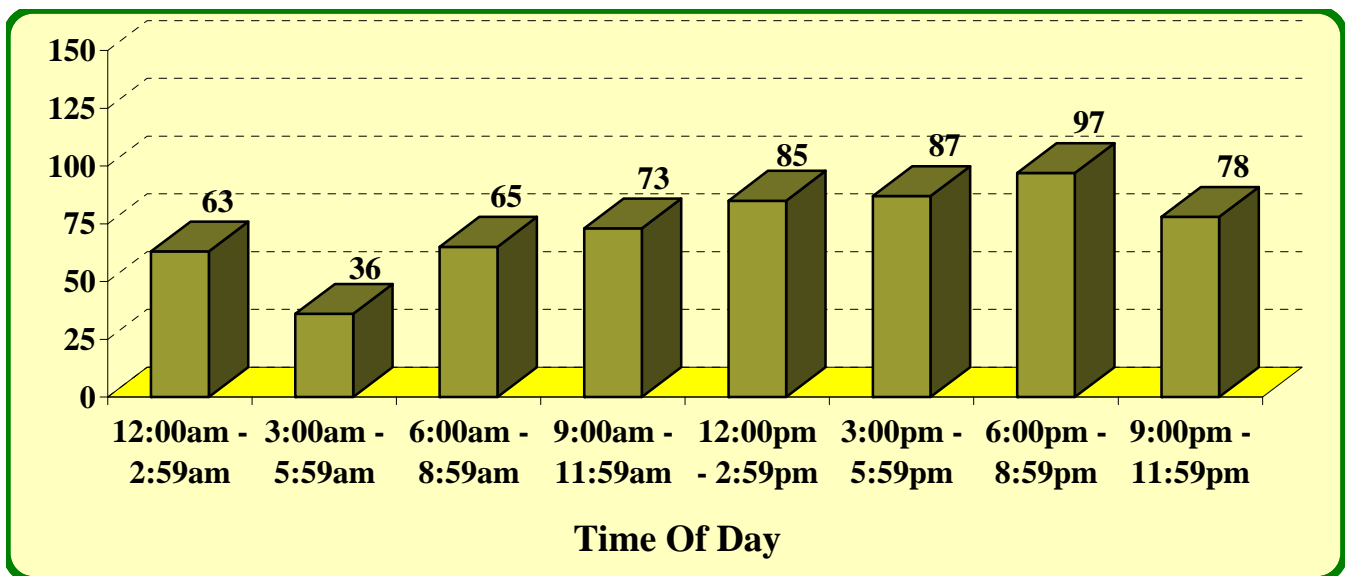
# ALCOHOL/DRUG RELATED CRASHES BY TIME OF DAY AND DAY OF WEEK

Time of Day	Sunday	Monday	Tuesday	Wednesday	Thursday	Friday	Saturday	Total
12:00am - 2:59am	173	38	34	52	55	75	170	597
3:00am - 5:59am	109	18	17	20	24	27	110	325
6:00am - 8:59am	37	10	26	13	14	30	43	173
9:00am - 11:59am	23	8	14	19	26	26	44	160
12:00pm - 2:59pm	39	42	41	43	43	40	61	309
3:00pm - 5:59pm	83	79	92	69	80	101	112	616
6:00pm - 8:59pm	96	81	77	74	87	117	147	679
9:00pm - 11:59pm	90	86	74	80	82	153	180	745
<b>Total</b>	<b>650</b>	<b>362</b>	<b>375</b>	<b>370</b>	<b>411</b>	<b>569</b>	<b>867</b>	<b>3,604</b>



# FATAL CRASHES BY TIME OF DAY AND DAY OF WEEK

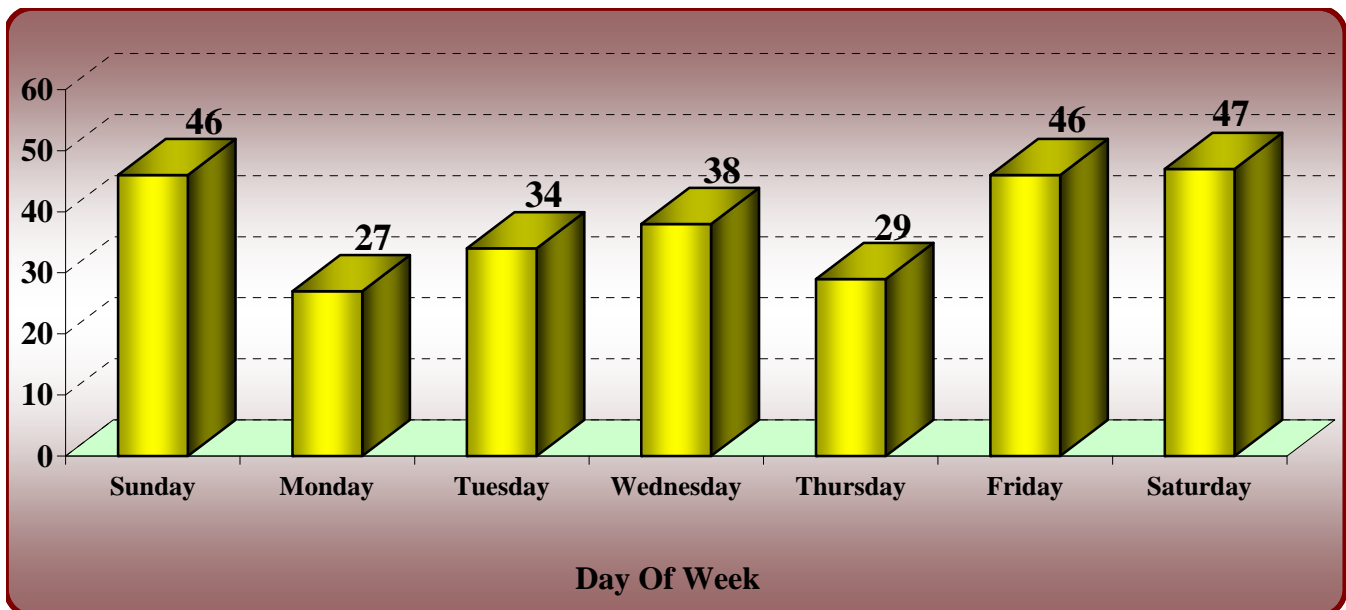
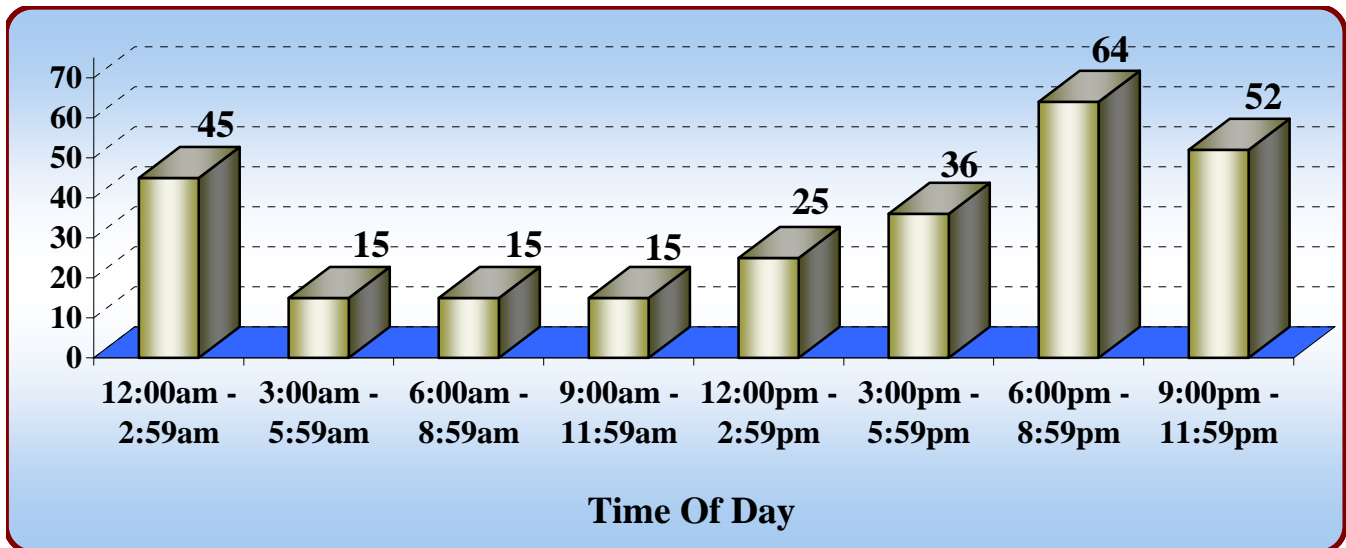
Time of Day	Sunday	Monday	Tuesday	Wednesday	Thursday	Friday	Saturday	Total
12:00am - 2:59am	22	7	2	6	5	6	15	63
3:00am - 5:59am	10	4	2	8	1	1	10	36
6:00am - 8:59am	7	5	10	9	15	10	9	65
9:00am - 11:59am	9	6	7	14	9	15	13	73
12:00pm - 2:59pm	11	15	8	10	14	11	16	85
3:00pm - 5:59pm	9	9	12	21	17	9	10	87
6:00pm - 8:59pm	16	8	9	14	15	19	16	97
9:00pm - 11:59pm	11	13	8	7	6	13	20	78
<b>Total</b>	<b>95</b>	<b>67</b>	<b>58</b>	<b>89</b>	<b>82</b>	<b>84</b>	<b>109</b>	<b>584</b>





# ALCOHOL/DRUG RELATED FATAL CRASHES BY TIME OF DAY AND DAY OF WEEK

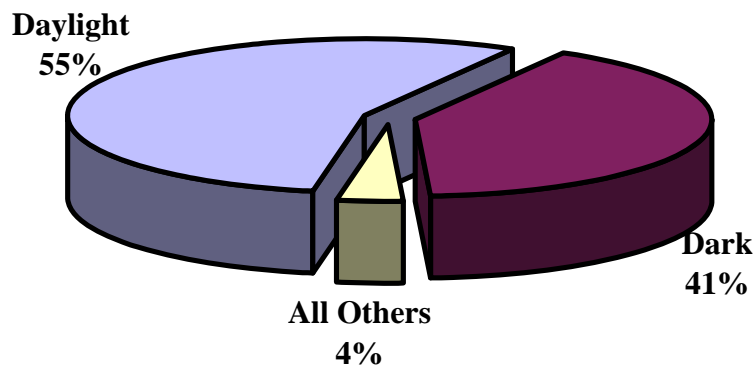
Time of Day	Sunday	Monday	Tuesday	Wednesday	Thursday	Friday	Saturday	Total
12:00am - 2:59am	15	5	5	3	4	3	10	45
3:00am - 5:59am	4	1	1	2	1	2	4	15
6:00am - 8:59am	4	1	4	3	1	0	2	15
9:00am - 11:59am	3	3	3	1	0	4	1	15
12:00pm - 2:59pm	3	3	1	8	4	2	4	25
3:00pm - 5:59pm	6	5	1	6	4	8	6	36
6:00pm - 8:59pm	9	3	13	6	7	18	8	64
9:00pm - 11:59pm	2	6	6	9	8	9	12	52
<b>Total</b>	<b>46</b>	<b>27</b>	<b>34</b>	<b>38</b>	<b>29</b>	<b>46</b>	<b>47</b>	<b>267</b>



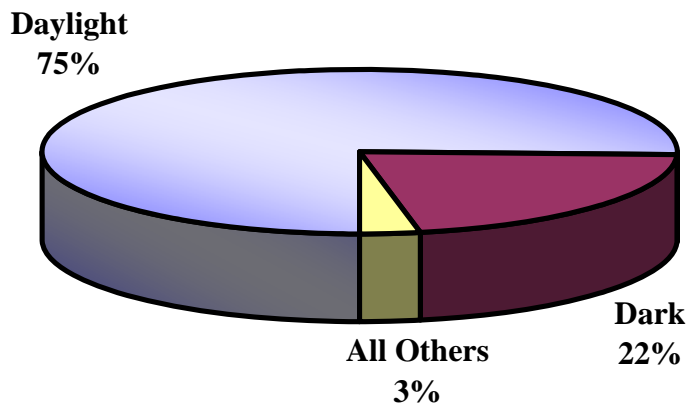
# CRASHES BY LIGHTING CONDITIONS

Light Condition	Fatal Crashes	Total Crashes
Daylight	325	50,098
Dark	238	14,301
Other	16	1,855
Unknown	5	139
<b>Total</b>	<b>584</b>	<b>66,393</b>

## Fatal Crashes

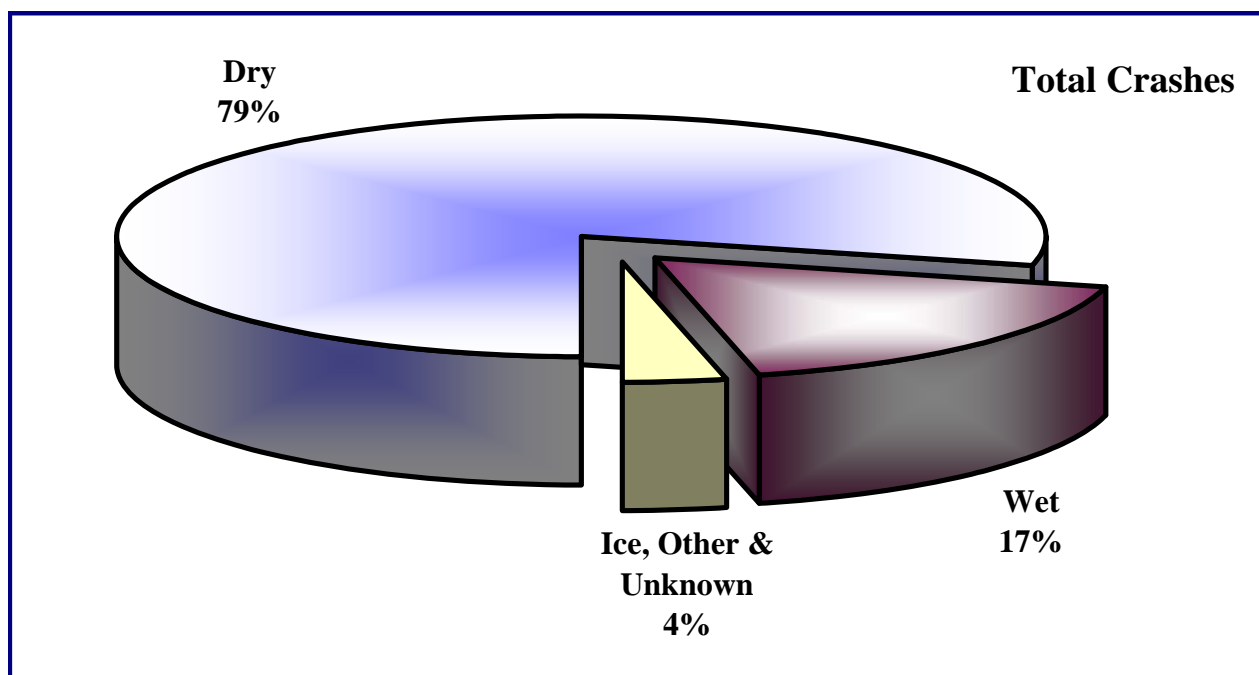
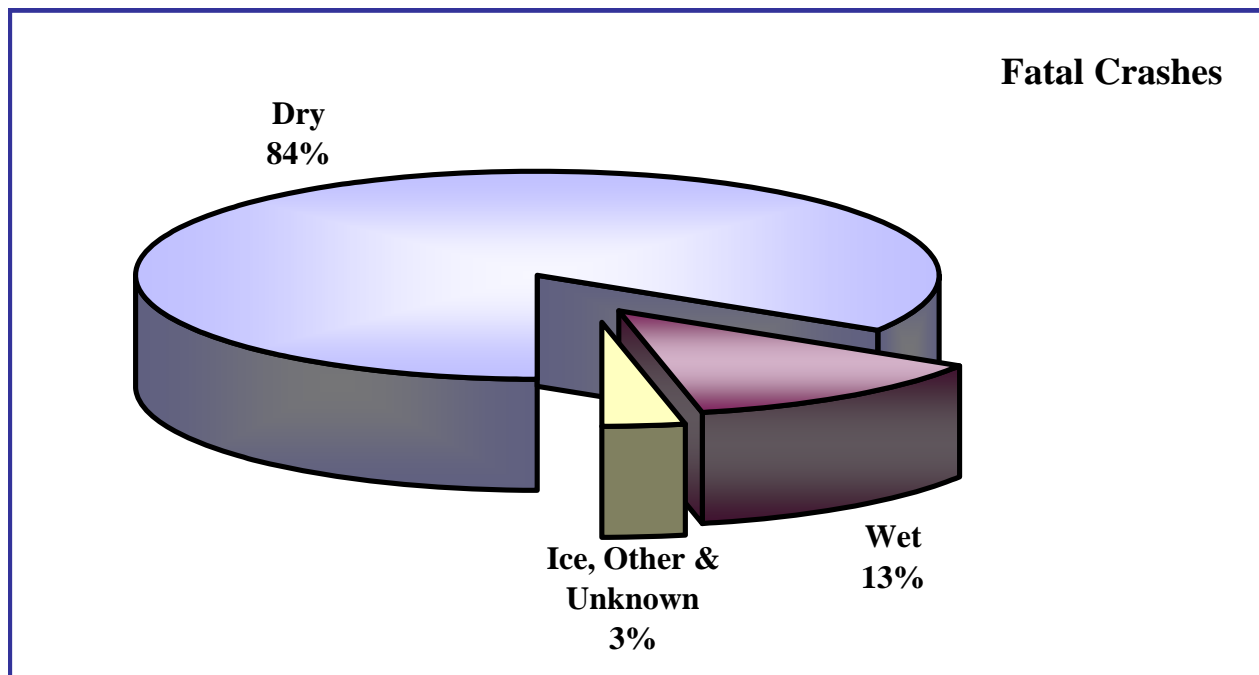


## Total Crashes



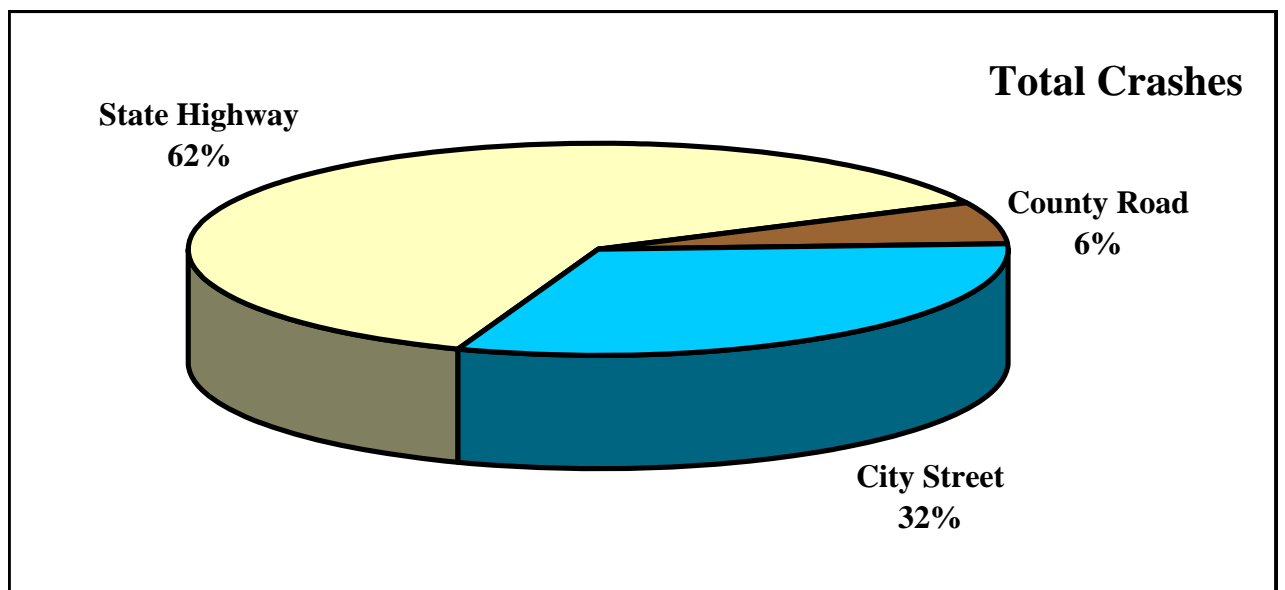
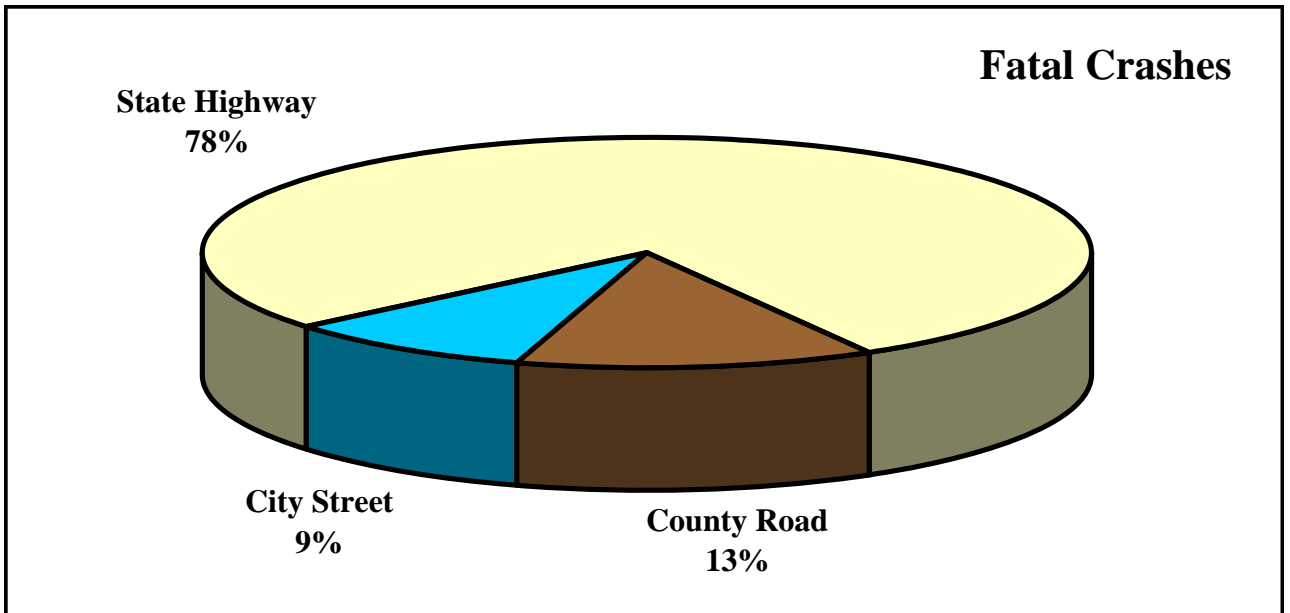
# CRASHES BY ROAD SURFACE CONDITIONS

Condition	Fatal Crashes	Total Crashes
Dry	490	52,353
Wet	74	11,588
Ice	5	1,335
Other	10	489
Unknown	5	628
<b>Total</b>	<b>584</b>	<b>66,393</b>



# CRASHES BY ROAD SYSTEM

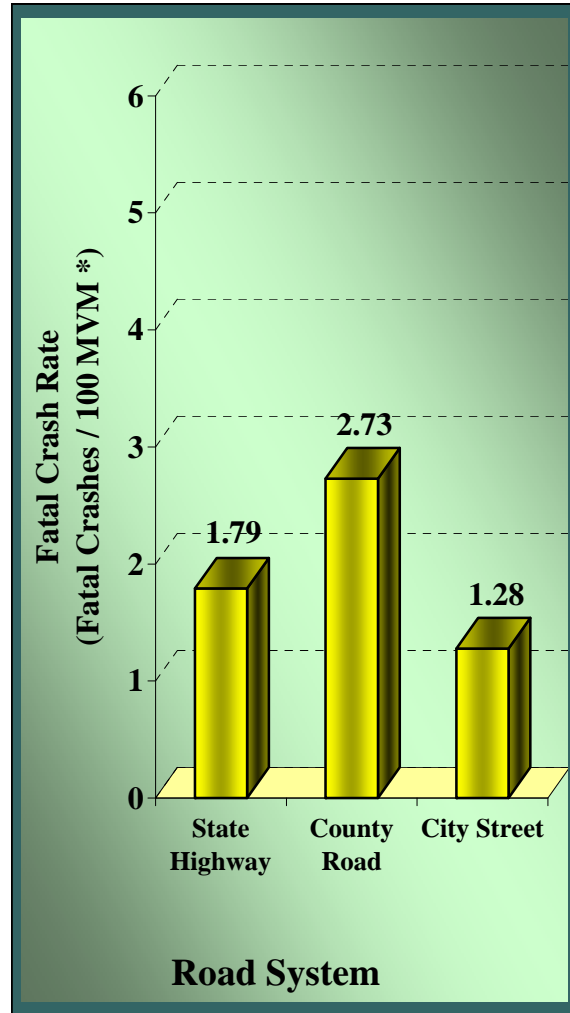
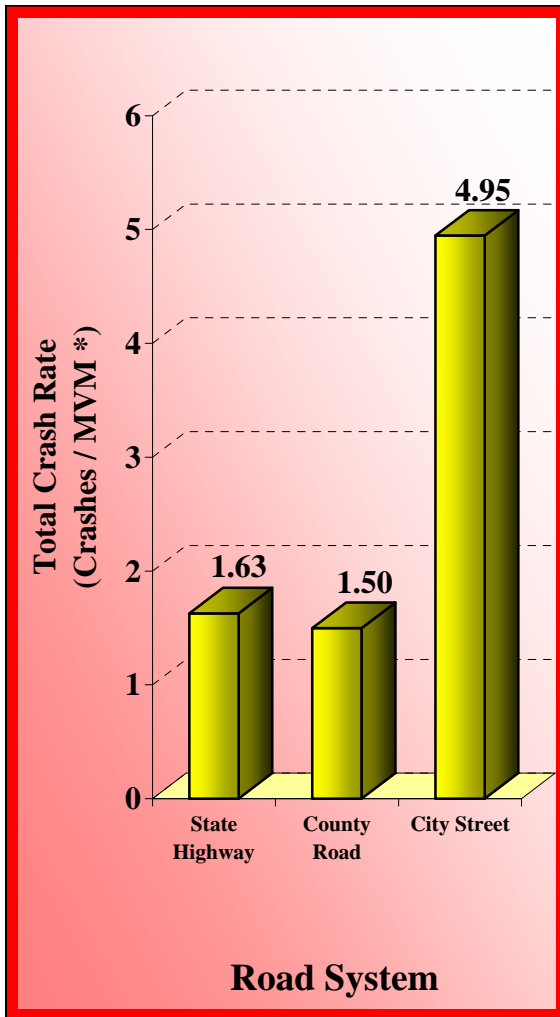
Road System	Fatal Crashes	Nonfatal Injury	P.D.O. * Crashes	Total Crashes
State Highway	455	17,673	23,231	41,359
County Road	75	1,890	2,152	4,117
City Street	54	7,141	13,722	20,917
<b>Totals</b>	<b>584</b>	<b>26,704</b>	<b>39,105</b>	<b>66,393</b>



\* Property Damage Only Crashes

# CRASH RATES BY ROAD SYSTEM

Road System	Annual MVM*	Total Crashes	Crashes per MVM*	Fatal Crashes	Fatal Crashes per 100 MVM*
State Highway	25,415	41,359	1.63	455	1.79
County Road	2,748	4,117	1.50	75	2.73
City Street	4,228	20,917	4.95	54	1.28
<b>Totals</b>	<b>32,391</b>	<b>66,393</b>	<b>2.05</b>	<b>584</b>	<b>1.80</b>

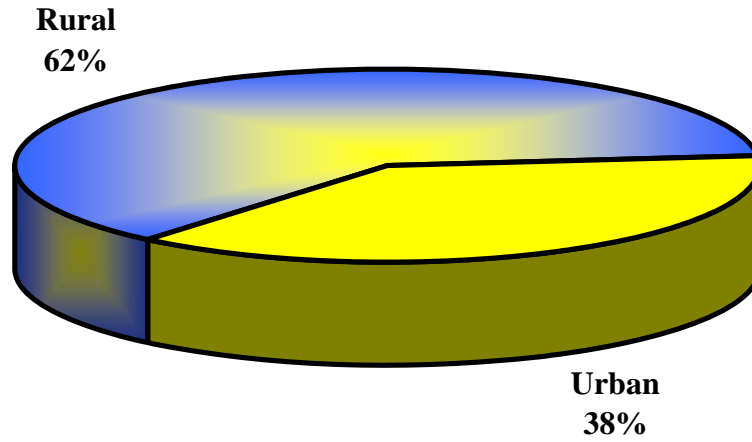


\* Million vehicle miles

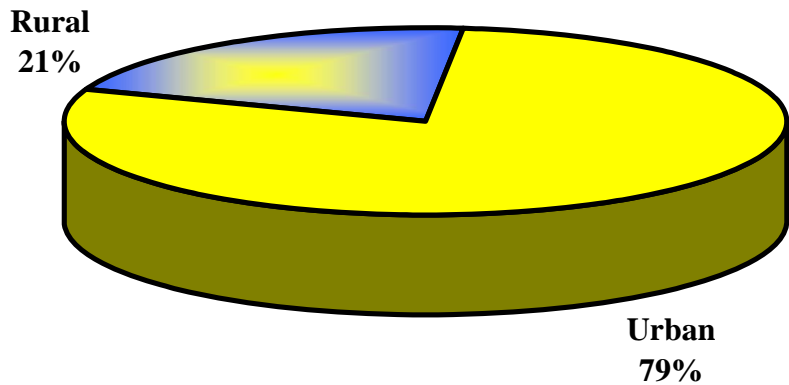
# CRASHES BY RURAL/URBAN LOCATION

Location	Fatal Crashes	Total Crashes
Rural	364	13,950
Urban	220	52,443
<b>Total</b>	<b>584</b>	<b>66,393</b>

## Fatal Crashes

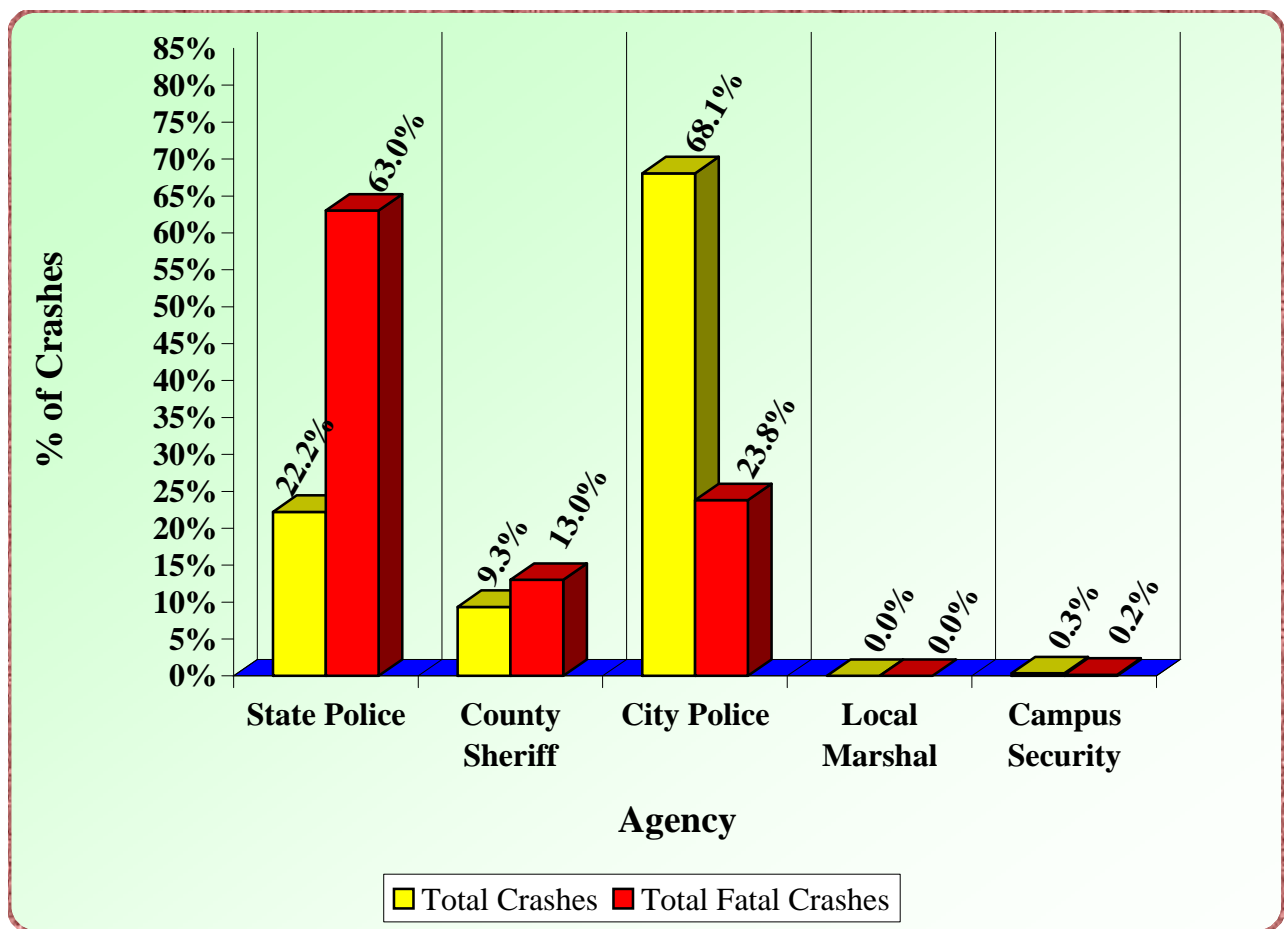


## Total Crashes



# CRASHES BY INVESTIGATING AGENCY

Agency	Total Crashes	% of Total	Total Fatal Crashes	% of Total
State Police	14,759	22.2%	368	63.0%
County Sheriff	6,206	9.3%	76	13.0%
City Police	45,193	68.1%	139	23.8%
Local Marshal	4	0.0%	0	0.0%
Campus Security	231	0.3%	1	0.2%
<b>Total</b>	<b>66,393</b>	<b>100.00%</b>	<b>584</b>	<b>100.00%</b>



# CRASHES BY TYPE OF COLLISION

<b>All Crashes</b>						
Type Of Collision	Fatal Crashes	Fatalities	Injury Crashes	Injuries	P.D.O. *	Total Crashes
Angle	108	127	8,120	17,382	11,364	<b>19,592</b>
Backing (Rear to Rear)	0	0	294	631	1,270	<b>1,564</b>
Head On	86	107	669	1,668	421	<b>1,176</b>
Rear End	22	27	7,028	14,483	11,890	<b>18,940</b>
Sideswipe Opposite Direction	15	17	568	1,190	1,041	<b>1,624</b>
Sideswipe Same Direction	5	5	1,305	2,929	3,847	<b>5,157</b>
Single Vehicle Crash	348	367	8,720	11,622	9,272	<b>18,340</b>
<b>Total</b>	<b>584</b>	<b>650</b>	<b>26,704</b>	<b>49,905</b>	<b>39,105</b>	<b>66,393</b>

<b>Alcohol and Other Drug Related Crashes</b>						
Type Of Collision	Fatal Crashes	Fatalities	Injury Crashes	Injuries	P.D.O. *	Total Crashes
Angle	32	37	272	647	162	<b>466</b>
Backing (Rear to Rear)	0	0	8	15	12	<b>20</b>
Head On	42	51	93	287	16	<b>151</b>
Rear End	9	11	246	601	216	<b>471</b>
Sideswipe Opposite Direction	6	8	54	122	55	<b>115</b>
Sideswipe Same Direction	1	1	63	140	57	<b>121</b>
Single Vehicle Crash	161	168	1,255	1,666	844	<b>2,260</b>
<b>Total</b>	<b>251</b>	<b>276</b>	<b>1,991</b>	<b>3,478</b>	<b>1,362</b>	<b>3,604</b>

\*Property Damage Only



# VEHICLES INVOLVED BY FIRST HARMFUL EVENT

Harmful Event	Single Vehicle Crashes			Multi-Vehicle Crashes		
	Fatal Crashes	Injury Crashes	P.D.O.* Crashes	Fatal Crashes	Injury Crashes	P.D.O.* Crashes
Animal	2	108	90	0	1	2
Bank or Ledge	36	1,327	854	0	2	0
Bridge - Underpass	6	167	157	0	2	0
Bridge Rail	0	10	17	0	0	0
Concrete Barrier	0	21	42	0	1	0
Culvert - Ditch	10	501	816	0	0	0
Explosion	0	0	1	0	0	0
Fell From Vehicle	2	27	38	0	2	0
Fence or Fence Post	6	375	626	0	0	0
Fire	0	1	1	0	0	1
Guard Rail or Post	10	330	374	0	3	0
House - Building	0	65	112	0	0	0
Immersion	1	16	17	0	0	0
Impact Cushion Device	0	18	11	0	0	0
Jackknife	0	0	9	0	0	1
MV In Other Roadway	0	16	0	0	0	0
MV In Transport	0	0	0	0	6	10
Light - Luminary Pole	0	0	37	501	37,980	61,325
Overtuned	92	1,533	643	1	2	0
Parked Vehicle	2	342	1,778	0	18	44
Pedacycle	4	151	31	0	0	0
Pedestrian	42	342	19	4	13	0
Sign - Traffic Signal	7	350	524	0	3	4
Train	7	25	26	0	3	2
Tree(s)	74	1,387	915	0	0	0
Utility Pole	14	499	620	0	1	2
Other	2	97	126	0	2	13
Other Fixed Object	28	858	1,112	0	9	4
Other Non-Fixed Object	1	95	182	0	31	31
Unknown Object Not Fixed	2	29	75	0	6	14
Unknown	0	30	19	0	7	17
<b>Total</b>	<b>348</b>	<b>8,720</b>	<b>9,272</b>	<b>506</b>	<b>38,092</b>	<b>61,470</b>

\*Property Damage Only

# DRIVERS INVOLVED BY OPERATOR FACTOR

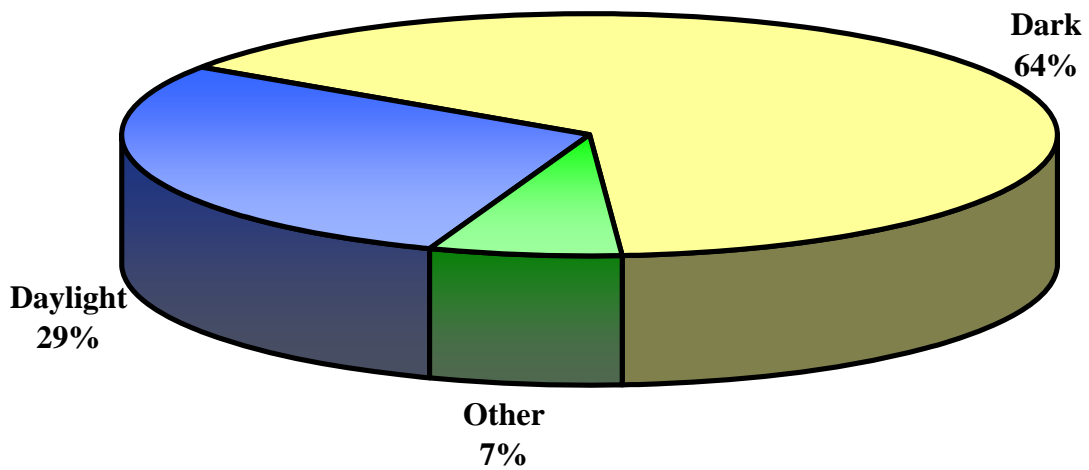
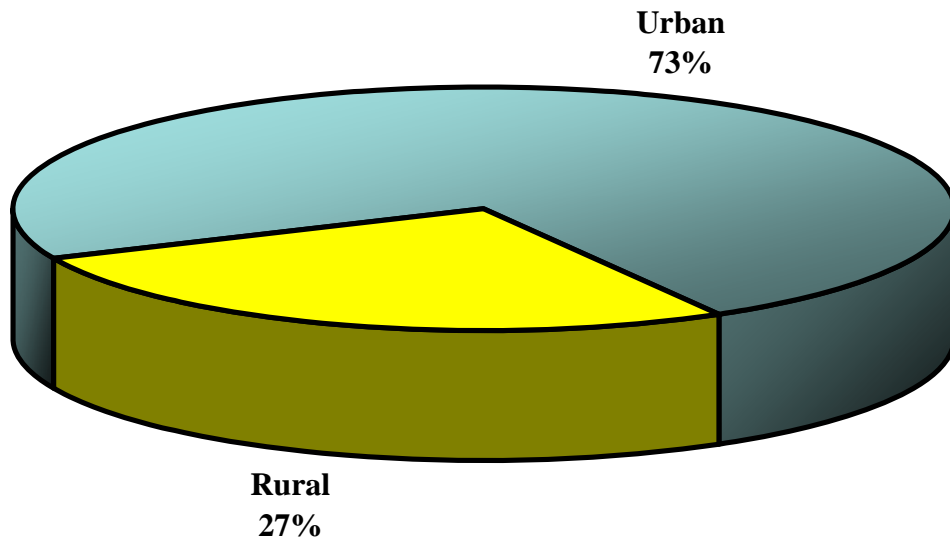
Operator Factor	Crash Severity					Total
	1	2	3	4	5	
None	276	1,203	4,803	13,599	30,364	<b>50,245</b>
Alcohol	42	157	474	386	668	<b>1,727</b>
Careless / Prohibited Driving	195	874	2,512	4,791	10,087	<b>18,459</b>
Crossing Median			1	1	7	<b>9</b>
Crowded Off Roadway	2	13	41	86	185	<b>327</b>
Cutting In		2	6	42	127	<b>177</b>
Defective Brakes	1	5	47	98	168	<b>319</b>
Defective Lights		1	5	12	35	<b>53</b>
Disregarded Officer/Flagman	1		5	5	12	<b>23</b>
Disregarded Stop Sign	9	31	128	260	473	<b>901</b>
Disregarded Traffic Signal	4	27	178	452	738	<b>1,399</b>
Disregarded Yield Sign			3	5	19	<b>27</b>
Driving Without Lights		4	13	17	28	<b>62</b>
Drugs	3	11	28	51	73	<b>166</b>
Failure To Dim Headlights		1	1	8	13	<b>23</b>
Failure To Or Improper Signal			5	25	49	<b>79</b>
Failure To Yield	58	332	1,476	3,379	7,632	<b>12,877</b>
Following Too Close	4	116	540	2,613	5,911	<b>9,184</b>
Impeding Traffic		4	7	24	35	<b>70</b>
Improper Backing	1	4	23	242	1,445	<b>1,715</b>
Improper Lane Change	1	15	57	351	1,335	<b>1,759</b>
Improper Left Turn	4	12	79	207	615	<b>917</b>
Improper Passing	4	21	42	137	361	<b>565</b>
Improper Right Turn		3	14	98	408	<b>523</b>
Improperly Parked		2	9	27	103	<b>141</b>
Other Defective Equipment	5	21	70	115	249	<b>460</b>
Prohibited U Turn		3	11	12	30	<b>56</b>
Too Fast For Conditions	50	173	539	895	1,954	<b>3,611</b>
Wrong Side Of Road	62	88	163	218	383	<b>914</b>
Wrong Way / One Way Traffic	4	1	7	28	49	<b>89</b>
Other	36	188	695	1,245	2,952	<b>5,116</b>
Unknown	92	130	636	1,323	4,234	<b>6,415</b>
<b>Total</b>	<b>854</b>	<b>3,442</b>	<b>12,618</b>	<b>30,752</b>	<b>70,742</b>	<b>118,408</b>

# DRIVERS INVOLVED IN ALCOHOL/DRUG RELATED CRASHES BY OPERATOR FACTOR

Operator Factor	Crash Severity					Total
	1	2	3	4	5	
None	96	86	294	385	530	1,391
Alcohol	42	157	474	386	668	1,727
Careless/Prohibited Driving	86	87	244	209	369	995
Crowded off Roadway	0	0	1	0	0	1
Cutting In	0	0	0	1	0	1
Defective Brakes	0	0	0	0	2	2
Defective Lights	0	0	2	0	0	2
Disregarded Officer/Flagman	0	0	1	0	1	2
Disregarded Stop Sign	1	3	9	8	13	34
Disregarded Traffic Signal	0	0	8	4	15	27
Disregarded Yield Sign	0	0	0	0	1	1
Driving Without Lights	0	0	1	1	2	4
Drugs	3	11	28	51	73	166
Failure To Dim Headlights	0	0	0	0	1	1
Failure To or Improper Signal	0	0	0	1	2	3
Failure To Yield	12	7	45	39	47	150
Following Too Close	2	2	14	35	51	104
Impeding Traffic	0	0	1	3	1	5
Improper Backing	0	0	4	3	13	20
Improper Lane Change	0	0	0	2	7	9
Improper Left Turn	1	0	1	4	1	7
Improper Passing	1	4	4	4	5	18
Improper Right Turn	0	0	1	6	4	11
Improperly Parked	0	0	0	1	0	1
Other Defective Equipment	2	0	0	2	1	5
Prohibited U Turn	0	0	1	1	1	3
Runaway Car/No Driver	0	0	0	0	0	0
Too Fast For Conditions	24	8	35	22	34	123
Wrong Side of Road	23	10	31	20	20	104
Wrong Way/One Way Traffic	2	1	0	2	0	5
Other	16	3	13	11	33	76
Unknown	47	0	10	13	21	91
<b>Total</b>	<b>358</b>	<b>379</b>	<b>1,222</b>	<b>1,214</b>	<b>1,916</b>	<b>5,089</b>

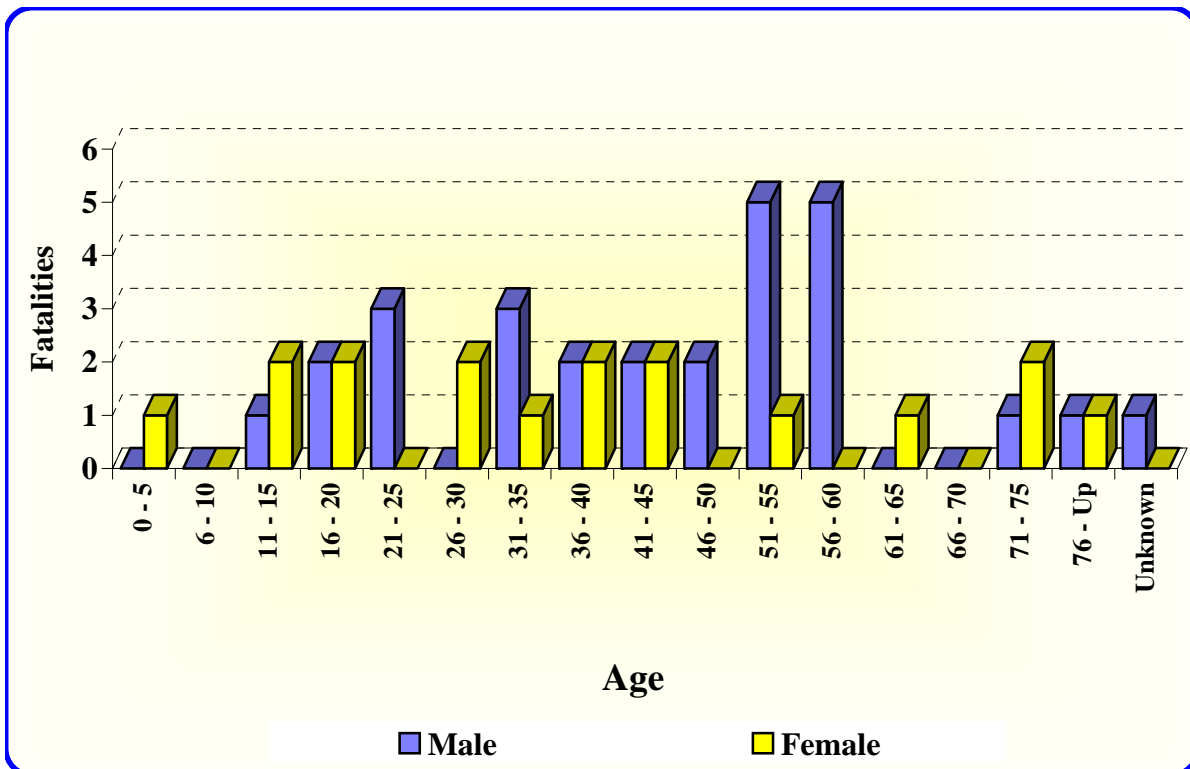
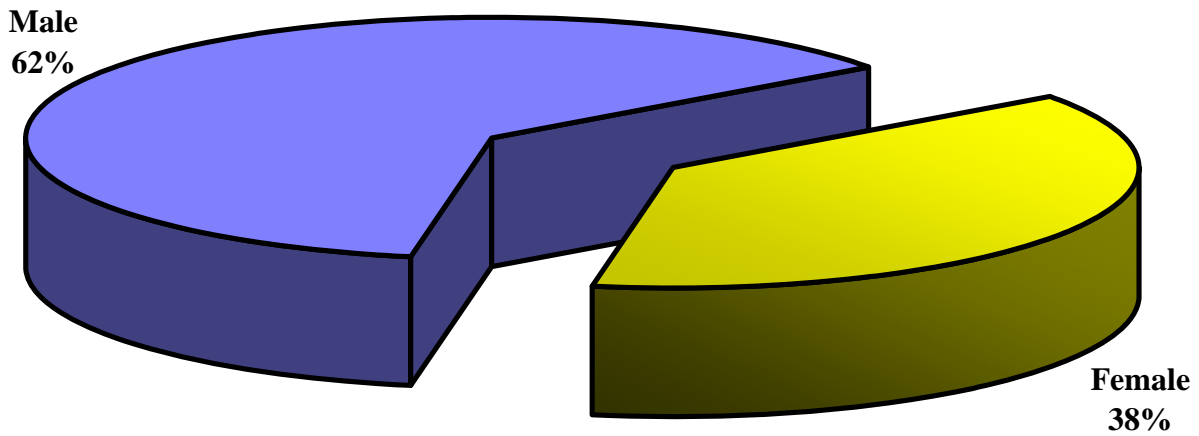
# PEDESTRIAN FATALITIES

Rural	Urban	Daylight	Dark	Other
12	33	13	29	3



# PEDESTRIAN FATALITIES (Cont.)

Male	Female	Total
28	17	45



# ARKANSAS' 20 LARGEST CITIES BY POPULATION CRASHES, FATALITIES AND INJURIES

City	Fatal Crashes	Fatalities	Injury Crashes	Injuries	P.D.O. * Crashes	Total Crashes
Little Rock	23	25	3,121	6,082	3,829	6,973
Fort Smith	10	10	1,099	1,695	2,695	3,804
North Little Rock	17	18	1,031	1,624	2,418	3,466
Fayetteville	8	8	1,764	4,079	1,147	2,919
Jonesboro	7	7	709	1,114	1,966	2,682
Pine Bluff	10	10	657	1,312	1,079	1,746
Springdale	4	4	435	654	1,549	1,988
Conway	3	3	554	938	1,050	1,607
Rogers	5	6	588	1,324	595	1,188
Hot Springs	9	9	601	985	1,773	2,383
Jacksonville	4	4	356	705	529	889
West Memphis	9	9	392	870	522	923
Texarkana	3	3	249	418	571	823
Russellville	3	3	252	400	822	1,077
Paragould	4	4	308	592	543	855
Benton	5	5	236	338	760	1,001
El Dorado	0	0	173	283	578	751
Sherwood	0	0	191	289	351	542
Bentonville	4	4	264	403	949	1,217
Van Buren	0	0	213	351	484	697

\* Property Damage Only

# ARKANSAS' 20 LARGEST CITIES BY POPULATION ALCOHOL AND OTHER DRUG RELATED CRASHES, FATALITIES AND INJURIES

City	Fatal Crashes	Fatalities	Injury Crashes	Injuries	P.D.O. * Crashes	Total Crashes
Little Rock	13	14	134	227	90	237
Fort Smith	8	8	52	89	85	145
North Little Rock	11	11	42	71	57	110
Fayetteville	4	4	143	314	37	184
Jonesboro	4	4	31	56	33	68
Pine Bluff	6	6	41	80	33	80
Springdale	1	1	36	60	79	116
Conway	1	1	20	37	29	50
Rogers	1	2	31	69	16	48
Hot Springs	4	4	34	67	46	84
Jacksonville	1	1	19	35	18	38
West Memphis	1	1	20	36	11	32
Texarkana	1	1	13	16	17	31
Russellville	3	3	16	33	21	40
Paragould	1	1	11	20	17	29
Benton	3	3	16	24	34	53
El Dorado	0	0	15	31	17	32
Sherwood	0	0	10	24	12	22
Bentonville	2	2	17	28	21	40
Van Buren	0	0	14	19	15	29

\* Property Damage Only

## TOTAL CRASHES, FATALITIES AND INJURIES BY COUNTY

County	Fatal Crashes	Fatalities	Injury Crashes	Injuries	P.D.O. Crashes	Total Crashes
ARKANSAS	4	4	153	252	258	415
ASHLEY	3	3	132	196	289	424
BAXTER	10	13	262	428	478	750
BENTON	32	35	1,550	2,928	2,456	4,038
BOONE	3	3	588	1,405	170	761
BRADLEY	5	5	59	102	66	130
CALHOUN	3	3	53	89	54	110
CARROLL	5	7	266	598	124	395
CHICOT	4	4	55	101	68	127
CLARK	6	8	181	329	284	471
CLAY	4	4	73	130	106	183
CLEBURNE	11	14	244	381	237	492
CLEVELAND	3	3	40	71	26	69
COLUMBIA	2	2	132	232	174	308
CONWAY	6	8	156	240	310	472
CRAIGHEAD	19	20	891	1,426	2,140	3,050
CRAWFORD	7	7	541	927	827	1,375
CRITTENDEN	16	16	828	1,943	720	1,564
CROSS	8	9	198	385	139	345
DALLAS			61	105	65	126
DESHA	4	4	69	141	112	185
DREW	5	5	108	189	116	229
FAULKNER	12	13	860	1,487	1,506	2,378
FRANKLIN	1	1	137	277	73	211
FULTON	8	8	74	136	54	136
GARLAND	28	32	1,170	2,147	2,227	3,425
GRANT	4	5	104	187	95	203
GREENE	7	8	336	646	570	913
HEMPSTEAD	5	5	208	351	314	527
HOT SPRING	10	10	300	578	239	549
HOWARD			88	173	89	177
INDEPENDENCE	13	14	364	620	695	1,072
IZARD	1	1	36	60	32	69
JACKSON	8	8	93	164	119	220
JEFFERSON	16	22	862	1,709	1,321	2,199
JOHNSON	2	2	125	187	237	364
LAFAYETTE	1	1	33	57	24	58
LAWRENCE	6	6	92	189	71	169



**TOTAL CRASHES, FATALITIES AND INJURIES  
BY COUNTY (CONT.)**

<b>County</b>	<b>Fatal Crashes</b>	<b>Fatalities</b>	<b>Injury Crashes</b>	<b>Injuries</b>	<b>P.D.O. Crashes</b>	<b>Total Crashes</b>
LEE	3	3	50	94	31	84
LINCOLN	3	3	83	150	87	173
LITTLE RIVER	1	1	73	108	59	133
LOGAN	5	6	136	275	107	248
LONOKE	16	17	355	607	769	1,140
MADISON	6	6	68	129	57	131
MARION	3	3	63	110	71	137
MILLER	7	10	359	626	599	965
MISSISSIPPI	15	17	286	461	693	994
MONROE	5	5	87	176	90	182
MONTGOMERY			84	165	52	136
NEVADA	7	8	68	110	79	154
NEWTON	4	4	85	151	11	100
OUACHITA	6	7	110	157	96	212
PERRY	4	6	38	53	18	60
PHILLIPS	6	6	142	336	134	282
PIKE	3	3	78	149	52	133
POINSETT	10	11	148	237	234	392
POLK	3	3	121	208	146	270
POPE	13	13	353	560	957	1,323
PRAIRIE	4	7	71	144	70	145
PULASKI	58	64	5,123	9,337	7,931	13,112
RANDOLPH	4	5	89	188	118	211
SALINE	9	9	798	1,336	1,510	2,317
SCOTT	2	2	110	184	67	179
SEARCY	4	5	76	136	11	91
SEBASTIAN	17	18	1,299	2,045	2,934	4,250
SEVIER	5	5	172	412	82	259
SHARP	9	12	137	264	92	238
ST. FRANCIS	8	11	362	878	121	491
STONE	3	3	48	71	88	139
UNION	2	2	399	700	651	1,052
VAN BUREN	9	10	122	194	155	286
WASHINGTON	19	20	2,525	5,261	3,170	5,714
WHITE	21	23	932	2,118	715	1,668
WOODRUFF	2	2	6	10	3	11
YELL	6	7	126	199	160	292
<b>TOTALS</b>	<b>584</b>	<b>650</b>	<b>26,704</b>	<b>49,905</b>	<b>39,105</b>	<b>66,393</b>

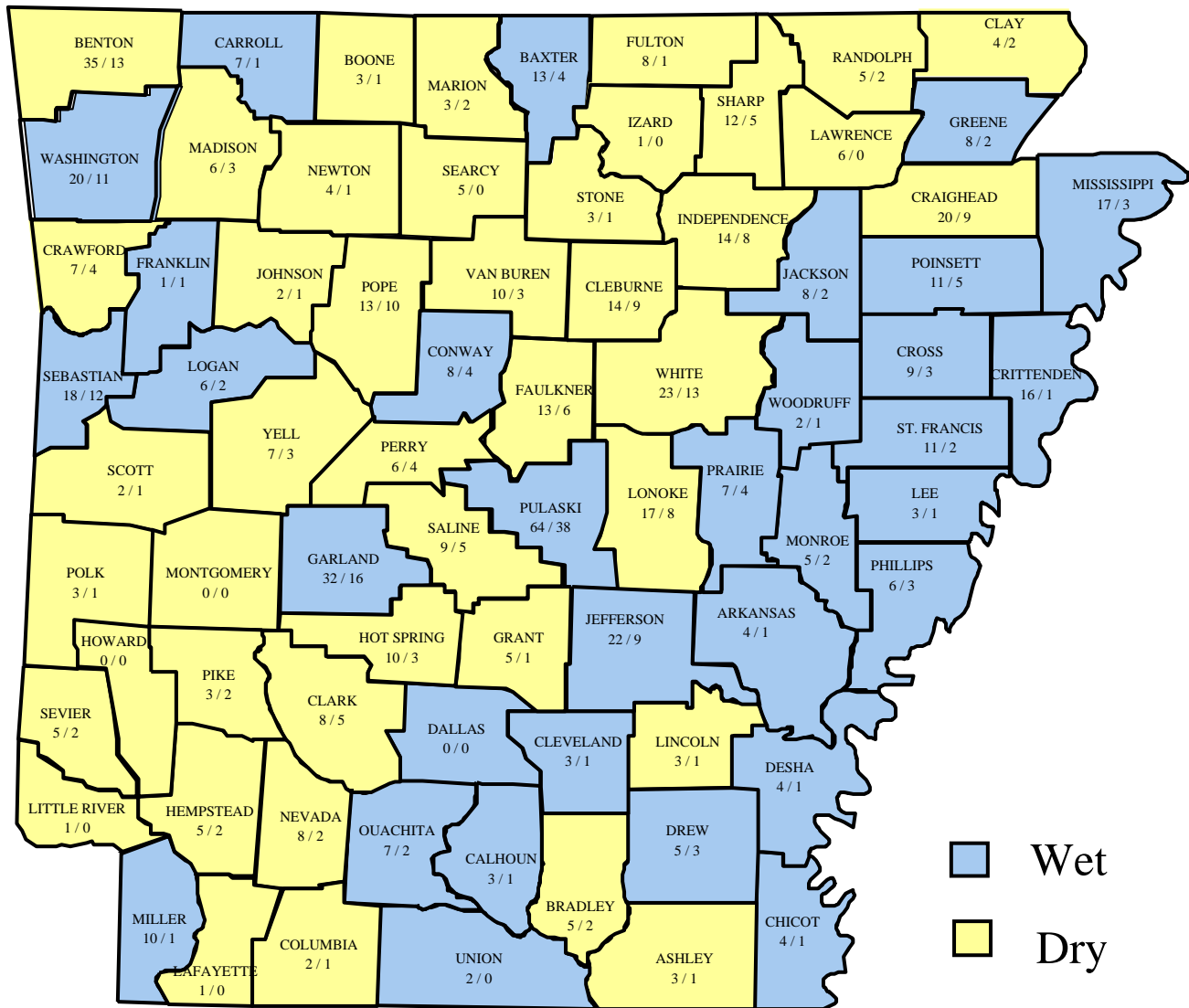
## ALCOHOL/DRUG RELATED CRASHES, FATALITIES AND INJURIES BY COUNTY

County	Fatal Crashes	Fatalities	Injury Crashes	Injuries	P.D.O. Crashes	Total Crashes
ARKANSAS	1	1	16	29	2	19
ASHLEY	1	1	23	31	14	38
BAXTER	3	4	32	40	27	62
BENTON	12	13	121	228	78	211
BOONE	1	1	40	70	4	45
BRADLEY	2	2	5	7	2	9
CALHOUN	1	1	9	17	1	11
CARROLL	1	1	23	42	8	32
CHICOT	1	1	8	15	4	13
CLARK	3	5	18	32	9	30
CLAY	2	2	8	11	5	15
CLEBURNE	7	9	25	37	15	47
CLEVELAND	1	1	7	12	3	11
COLUMBIA	1	1	5	5	6	12
CONWAY	3	4	26	38	18	47
CRAIGHEAD	9	9	53	98	45	107
CRAWFORD	4	4	50	77	35	89
CRITTENDEN	1	1	55	107	19	75
CROSS	2	3	18	41	3	23
DALLAS			5	8	2	7
DESHA	1	1	7	14	7	15
DREW	3	3	7	19	10	20
FAULKNER	6	6	53	90	49	108
FRANKLIN	1	1	10	18	5	16
FULTON	1	1	8	12	4	13
GARLAND	14	16	104	187	69	187
GRANT	1	1	12	21	3	16
GREENE	2	2	15	27	19	36
HEMPSTEAD	2	2	12	24	12	26
HOT SPRING	3	3	27	48	9	39
HOWARD			13	18	2	15
INDEPENDENCE	7	8	24	40	19	50
IZARD			5	6	4	9
JACKSON	2	2	9	17	9	20
JEFFERSON	8	9	59	110	43	110
JOHNSON	1	1	23	32	12	36
LAFAYETTE			4	6	1	5
LAWRENCE			6	19	3	9

## ALCOHOL/DRUG RELATED CRASHES, FATALITIES AND INJURIES BY COUNTY (CONT.)

County	Fatal Crashes	Fatalities	Injury Crashes	Injuries	P.D.O. Crashes	Total Crashes
LEE	1	1	10	14		11
LINCOLN	1	1	5	10	1	7
LITTLE RIVER			5	5	9	14
LOGAN	2	2	16	28		18
LONOKE	8	8	29	55	22	59
MADISON	3	3	6	8	4	13
MARION	2	2	4	10	7	13
MILLER	1	1	22	32	18	41
MISSISSIPPI	3	3	31	43	34	68
MONROE	2	2	11	16	3	16
MONTGOMERY			17	32	5	22
NEVADA	2	2	6	10		8
NEWTON	1	1	8	16		9
OUACHITA	2	2	18	18	4	24
PERRY	2	4	4	5	4	10
PHILLIPS	3	3	10	23	3	16
PIKE	2	2	10	18	4	16
POINSETT	5	5	17	23	13	35
POLK	1	1	10	21	11	22
POPE	10	10	26	56	30	66
PRAIRIE	3	4	0	1	1	4
PULASKI	35	38	256	436	214	505
RANDOLPH	2	2	10	14	5	17
SALINE	5	5	63	93	71	139
SCOTT	1	1	5	10	10	16
SEARCY			7	11		7
SEBASTIAN	11	12	67	113	95	173
SEVIER	2	2	13	17	3	18
SHARP	3	5	8	14	1	12
ST. FRANCIS	2	2	14	24	1	17
STONE	1	1	3	5	6	10
UNION			41	72	21	62
VAN BUREN	2	3	10	12	3	15
WASHINGTON	10	11	211	418	148	369
WHITE	12	13	47	104	23	82
WOODRUFF	1	1	1	5		2
YELL	2	3	25	33	8	35
<b>TOTALS</b>	<b>251</b>	<b>276</b>	<b>1,991</b>	<b>3,478</b>	<b>1,362</b>	<b>3,604</b>

# TOTAL FATALITIES VS ALCOHOL/DRUG RELATED FATALITIES BY COUNTY



County	Number of Counties	Total Fatalities	Alcohol/Drug Related Fatalities	% Alcohol/Drug Related
Wet	32	336	138	41%
Dry	43	314	138	44%