

# **Arkansas Higher Education 2017 Annual Comprehensive Report**

**December 1, 2017**

## **Annual Report on Student Retention and Graduation of Intercollegiate Athletics**



**Research & Analytics**

**Published by**

**Arkansas Department of Higher Education**  
423 Main Street, Little Rock, AR 72201

# ANNUAL REPORT ON RETENTION AND GRADUATION OF INTERCOLLEGIATE ATHLETES

---

This report complies with Act 267 of 1989 which requires reporting retention and graduation rates for entering freshmen who participate in Arkansas intercollegiate athletics. This information is produced from data submissions through the Arkansas Higher Education Information System for first-time, credential-seeking student athletes participating in football, basketball (men's and

## UNIVERSITIES WITH THE MOST STUDENT ATHLETES



**503 UA RAZORBACKS**



**416 UCA BEARS**



**359 ASU RED WOLVES**

women's), baseball, cross country/track programs and other sports programs. Information related to initial athletic scholarship status also is included. Public 4-Year Universities and 2-Year Colleges provide athletic data to ADHE whereas Private/Independent Institutions do not; therefore, this report covers public institutions only.

### Methodology

The methodology used herein closely follows the methodology used in the Annual Report on Student Retention and Graduation. The only factors different are the use of the athlete table and fields in the AHEIS/SISDB (Arkansas Higher Education Information System/Student Information System Database). These fields identify whether or not the athlete was first-time entering, what sport they participated in, and whether or not the student received an athletic scholarship.

The retention calculations herein are based on fall-to-fall comparisons of the students in the IPEDS cohort of first-time entering, full-time, and credential-seeking students from the fall term only for all institution types.

The graduation rates reported herein have been re-designed. The graduation rates use a cohort of first-time entering, credential-seeking students from the entire academic year and include all full-time and part-time students. In addition, the new graduation rates use a 100%, 150%, and 250% time rate for counting graduates. Such time rate in years is used for counting all credentials. For example, for the 4-Year Universities 100% rate, all credentials are counted if awarded within four academic years (plus two months).

*Figure 4.1: Universities with greatest number of student athletes.*

The time rates vary by institution type as shown below.

Institution Type	Rate	Time
4-Year Universities	100%	4 Academic Years + July/August in the 5th AY
	150%	6 Academic Years + July/August in the 7th AY
	250%	10 Academic Years + July/August in the 11th AY
2-Year Colleges	100%	2 Academic Years + July/August in the 3rd AY
	150%	3 Academic Years + July/August in the 4th AY
	250%	5 Academic Years + July/August in the 6th AY
Private/Independents	100%	4 Academic Years + July/August in the 5th AY
	150%	6 Academic Years + July/August in the 7th AY
	250%	10 Academic Years + July/August in the 11th AY
AY = Academic Year		

Table 4.1: Graduation Rate Definitions

The Cohort for the 4-Year Universities are as follows:

- 100% Rate: Cohort 1: AY 2009 running through AY2012
- 100% Rate: Cohort 2: AY 2010 running through AY2013
- 100% Rate: Cohort 3: AY 2011 running through AY2014
- 100% Rate: Cohort 4: AY 2012 running through AY2015
- 100% Rate: Cohort 5: AY 2013 running through AY2016
- 150% Rate: Cohort 1: AY 2007 running through AY2012
- 150% Rate: Cohort 2: AY 2008 running through AY2013
- 150% Rate: Cohort 3: AY 2009 running through AY2014
- 150% Rate: Cohort 4: AY 2010 running through AY2015
- 150% Rate: Cohort 5: AY 2011 running through AY2016
- 250% Rate: Cohort 1: AY 2003 running through AY2012
- 250% Rate: Cohort 2: AY 2004 running through AY2013
- 250% Rate: Cohort 3: AY 2005 running through AY2014
- 250% Rate: Cohort 4: AY 2006 running through AY2015
- 250% Rate: Cohort 5: AY 2007 running through AY2016

The Cohort for the 2-Year Colleges are as follows:

- 100% Rate: Cohort 1: AY 2011 running through AY2012
- 100% Rate: Cohort 2: AY 2012 running through AY2013
- 100% Rate: Cohort 3: AY 2013 running through AY2014
- 100% Rate: Cohort 4: AY 2014 running through AY2015
- 100% Rate: Cohort 5: AY 2015 running through AY2016
- 150% Rate: Cohort 1: AY 2010 running through AY2012
- 150% Rate: Cohort 2: AY 2011 running through AY2013
- 150% Rate: Cohort 3: AY 2012 running through AY2014
- 150% Rate: Cohort 4: AY 2013 running through AY2015
- 150% Rate: Cohort 5: AY 2014 running through AY2016
- 250% Rate: Cohort 1: AY 2008 running through AY2012

- 250% Rate: Cohort 2: AY 2009 running through AY2013
- 250% Rate: Cohort 3: AY 2010 running through AY2014
- 250% Rate: Cohort 4: AY 2011 running through AY2015
- 250% Rate: Cohort 5: AY 2012 running through AY2016

NOTE: The methodology used herein does not correspond with the NCAA GSR (Graduation Success Rate) methodology.

During the period of this review ten of the 4-Year Universities and three of the 2-Year Colleges participated in athletics.

1. ASUJ – Arkansas State University Jonesboro
2. ATU – Arkansas Tech University
3. HSU – Henderson State University
4. SAUM – Southern Arkansas University Magnolia
5. UAF – University of Arkansas, Fayetteville
6. UAFS – University of Arkansas - Fort Smith
7. UALR – University of Arkansas at Little Rock
8. UAM – University of Arkansas at Monticello
9. UAPB – University of Arkansas at Pine Bluff
10. UCA – University of Central Arkansas
11. CCCUA – Cossatot Community College of the University of Arkansas (AY2016 only)
12. MSCC [ASUMS] – Mid-South Community College [ASU Mid-South]
13. NAC – North Arkansas College

## OVERVIEW OF ATHLETICS

In Academic Year 2016, 3,210 students participated in athletics at the thirteen institutions referenced above. In AY2015 there were 3,233 students participating in athletics.



Figure 4.2: Athletes by Sport

Ten sports categories are included in the athletics reporting: Football, Men's Basketball, Women's Basketball, Baseball, Track, Golf, Swimming, Tennis, Volleyball, and Other Sports.

In terms of the number of participants, Football has the most participants followed by Track, Baseball, and Other.

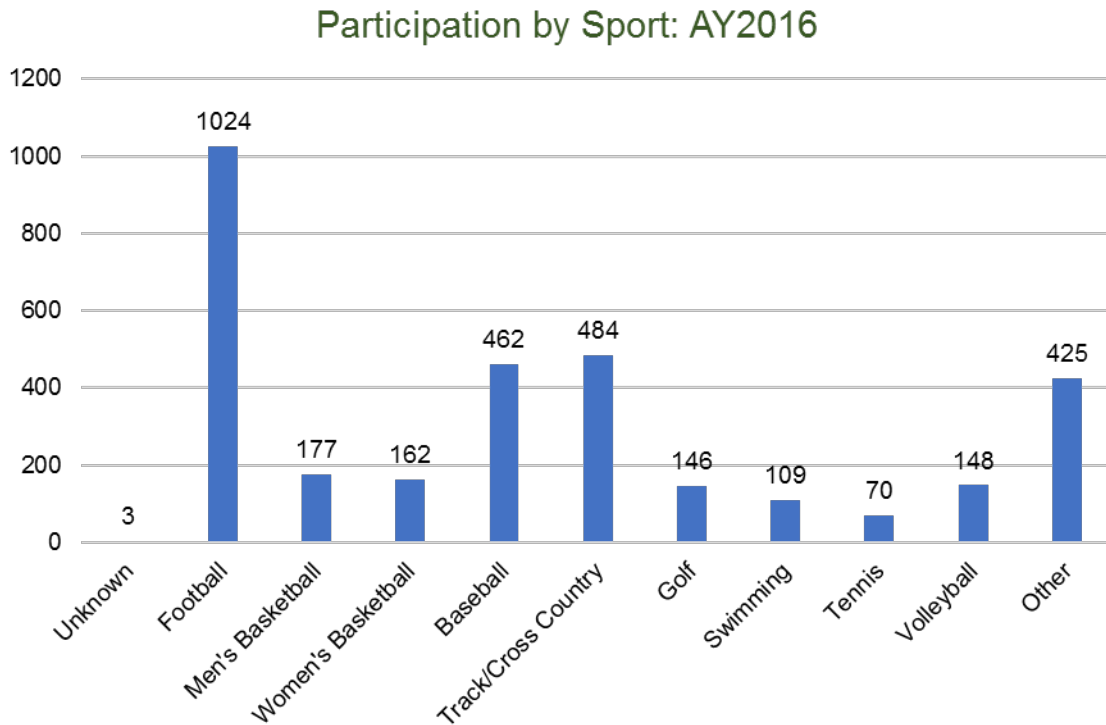


Figure 4.3: Athletes by Sport – Detailed

Many students receive scholarships to participate in athletics. The below graph illustrates that the majority of students participating in athletics receive a partial scholarship (62.9 percent) and a small portion (14.0 percent) receive a full scholarship.

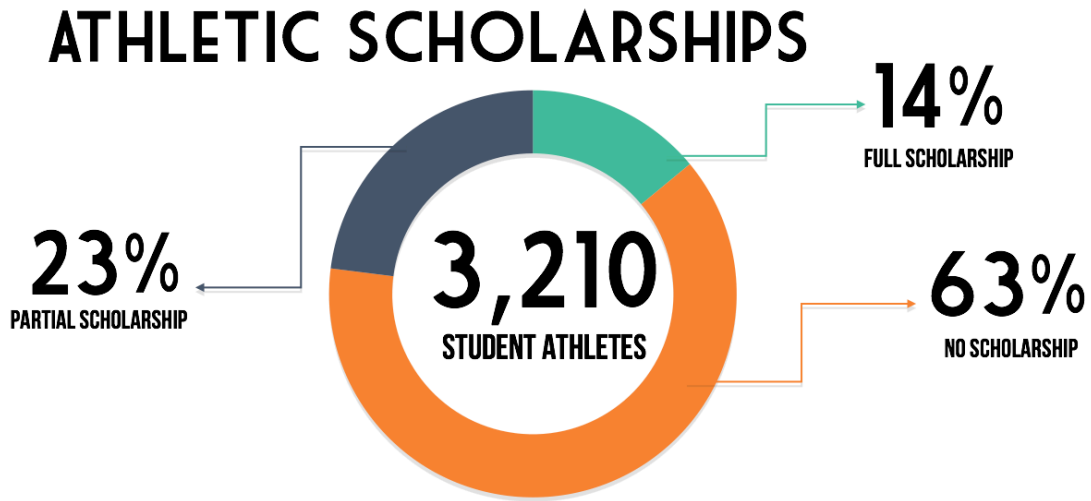


Figure 4.4: Athletic Scholarships

The below chart shows that UAF has the most student athletes.

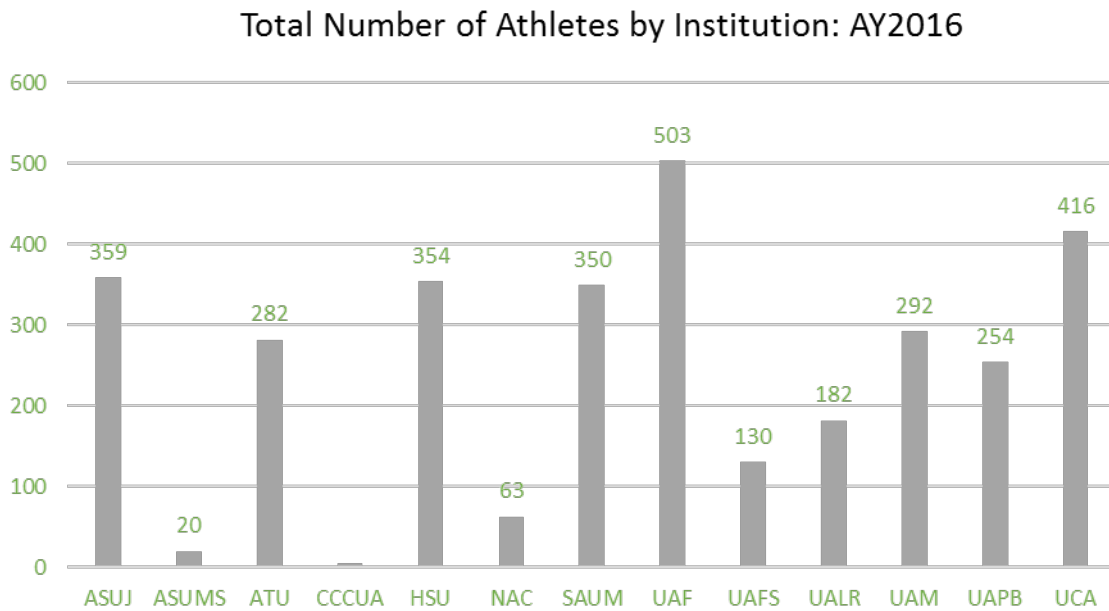


Figure 4.5: Athletic Participation at Institutions with Athletic Programs

## ATHLETIC FALL-TO-FALL RETENTION RATES

### Statewide

The below graph illustrates that fall-to-fall retention rates are higher for student athletes as compared to all students. Athletes are retained at higher rates than non-athlete students due to the commitment to and interest in participating in college athletics; also, a correlation may be made

## 1-YEAR RETENTION: ATHLETES VS. ALL STUDENTS

between participation and the impact of ancillary support services that many institutions provide to athletes.



Figure 4.6: One-Year Retention Rate of Athletes and All Students

The next graph shows the 1-year retention rates for student athletes for the last five years (fall-to-fall).

1 Year Retention Rate of Athletes					
Institution Type	AY2012 Cohort	AY2013 Cohort	AY2014 Cohort	AY2015 Cohort	AY2016 Cohort
	2011 Fall Cohort Retained to 2012 Fall	2012 Fall Cohort Retained to 2013 Fall	2013 Fall Cohort Retained to 2014 Fall	2014 Fall Cohort Retained to 2015 Fall	2015 Fall Cohort Retained to 2016 Fall
4-Year University	78.9%	78.6%	80.0%	78.7%	78.8%
2-Year College	64.6%	94.7%	86.1%	67.3%	80.4%
Total	77.7%	79.0%	80.3%	78.1%	78.9%

Table 4.2: One-Year Retention Rate

The following graph shows that student athletes who require remediation are retained at higher rates than all students who require remediation. This pattern is consistent with the retention rates of all students in the Annual Report on Student Retention and Graduation.

1 Year Retention Rates of All Student Athletes, Remediated Student Athletes, and Non-Remediated Student Athletes: 2015 Fall to 2016 Fall					
Athletes Only			All Students		
All Student Athletes	Remediated: Student Athletes	Non-Remediated: Student Athletes	All Students	Remediated: All Students	Non-Remediated: All Students
78.90%	72.7%	83.1%	61.3%	67.6%	50.3%

Table 4.3: One-Year Retention Rate of Student Athletes by remediation requirement

### Retention Rates for Student Athletes: 1-5 Year Rates

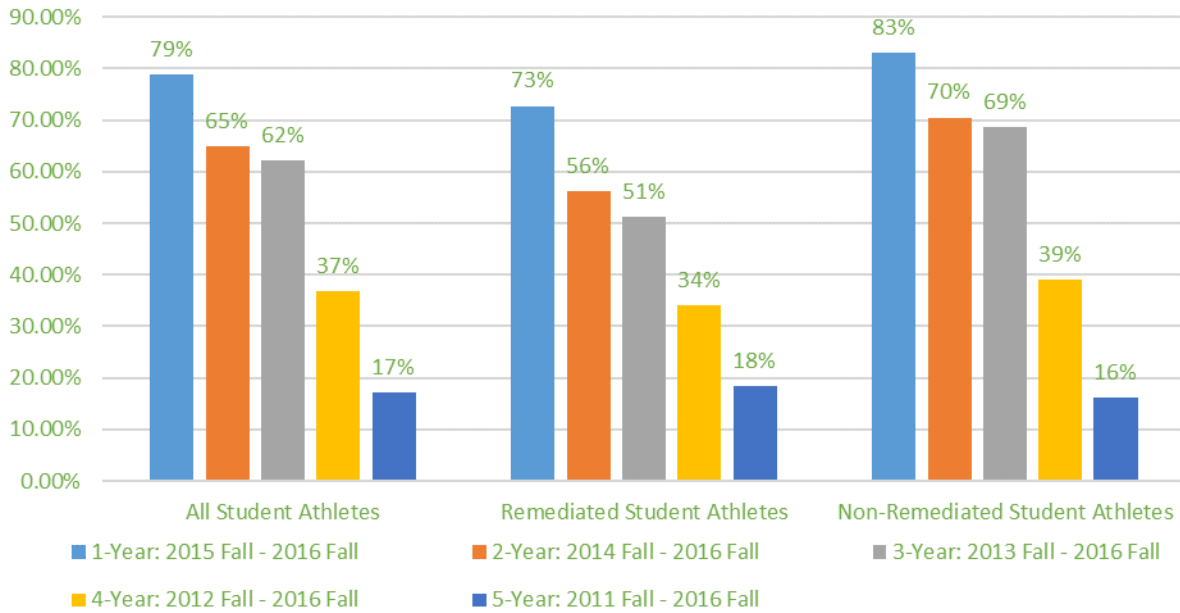


Figure 4.7: One-Year Retention Rate of Athletes by Remediation Requirement

The above graph shows that non-remediated athletes are retained at higher rates than remediated athletes for most cohorts.



## ADHE ATHLETIC ANNUAL GRADUATION RATES

### Statewide Overview

The graduation rate calculations for student athletes are based on the same methodology used in the Annual Report on Student Retention and Graduation. The only factors different are the use of the athlete table and fields in the AHEIS/SISDB (Arkansas Higher Education Information System/Student Information System Database). These fields identify whether or not the athlete was first-time entering, what sport they participated in, and whether or not the student received an athletic scholarship. The graduation rates reported herein are called the ADHE Athletic Annual Graduation Rates.

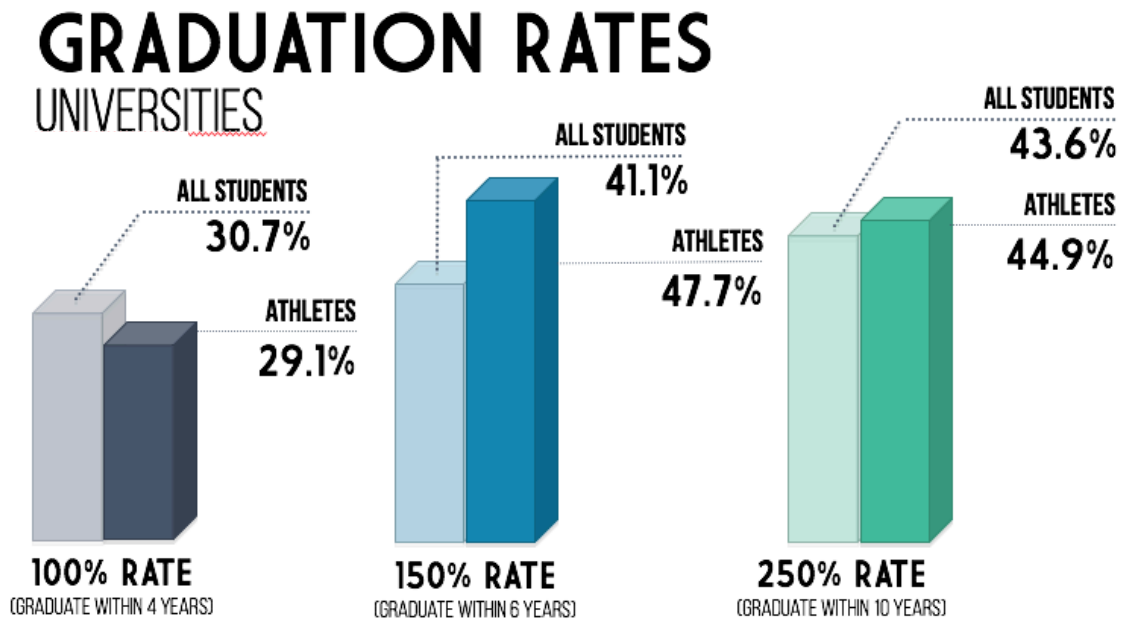
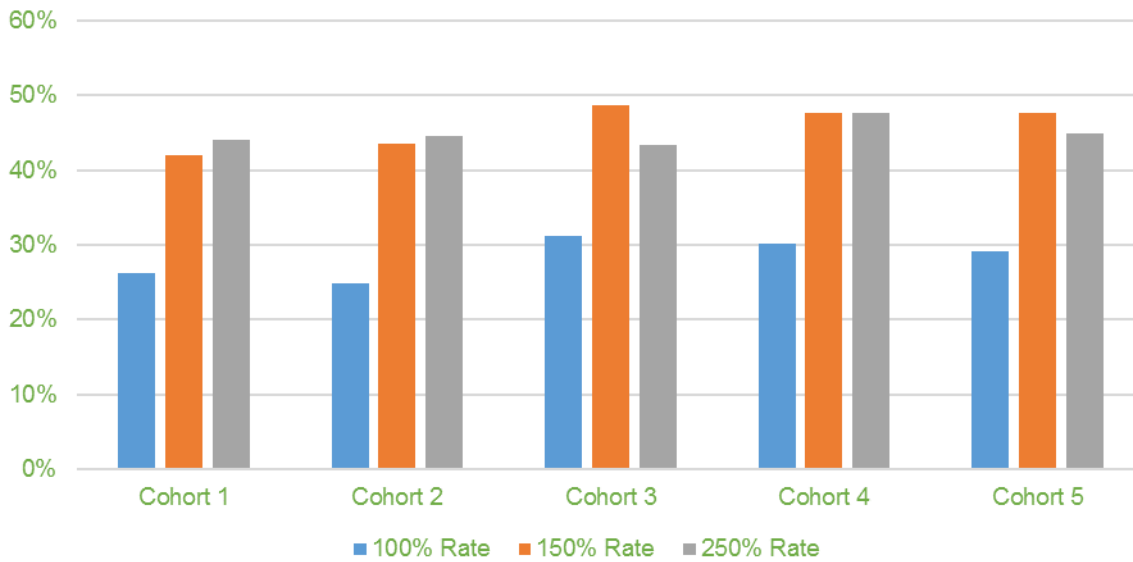


Figure 4.8: Athlete and All Student Graduation Rates by Time to Degree

As Figure 4.9 illustrates, the graduation rates are increasing for athletes for the 100% and 150% rates but declining for the 250% rate. (Note that each cohort is composed of a completely different group of student athletes and such graduation rates do not have to be consistent between the cohorts.)

## ADHE Annual Graduation Rates for Athletes: 4-Year Universities



<u>100% Rate</u>	<u>150% Rate</u>	<u>250% Rate</u>
Cohort 1 = AY2009	Cohort 1 = AY2007	Cohort 1 = AY2003
Cohort 2 = AY2010	Cohort 2 = AY2008	Cohort 2 = AY2004
Cohort 3 = AY2011	Cohort 3 = AY2009	Cohort 3 = AY2005
Cohort 4 = AY2012	Cohort 4 = AY2010	Cohort 4 = AY2006
Cohort 5 = AY2013	Cohort 5 = AY2011	Cohort 5 = AY2007

Figure 4.9: Athlete Graduation Rates by Cohort and Time to Degree - Universities

Per the below table, the graduation rates for athletes at 4-Year Universities are higher than that of all students in every case except for Cohort 2 for the 100% rate. As stated previously, higher rates for athletes may be due to the attraction of participating in college athletics and the support services that many institutions provide to athletes.

Comparison of Graduation Rates for Athletes v. All Students: 4-Year Universities									
Cohort	Athletes			All Students			Difference		
	100% Rate	150% Rate	250% Rate	100% Rate	150% Rate	250% Rate	100% Rate	150% Rate	250% Rate
Cohort 1	26.2%	42.0%	44.0%	24.5%	39.1%	40.9%	1.7%	2.9%	3.1%
Cohort 2	24.9%	43.5%	44.6%	23.6%	38.2%	40.9%	1.3%	5.3%	3.7%
Cohort 3	31.2%	48.7%	43.4%	25.7%	40.0%	40.9%	5.5%	8.7%	2.5%
Cohort 4	30.2%	47.7%	47.6%	27.6%	39.7%	42.0%	2.6%	8.0%	5.6%
Cohort 5	29.1%	47.7%	44.9%	30.7%	41.1%	43.6%	-1.6%	6.6%	1.3%

Table 4.4: Graduation Rates of Athletes and All Students – 4 Year Universities

The below table provides the most recent graduation rates for athletes at 4-Year Universities.

ADHE Annual Graduation Rates for Athletes: 4-Year Universities			
Institution	100% Rate	150% Rate	250% Rate
ASUJ	31.8%	60.0%	46.4%
ATU	12.6%	38.3%	47.7%
HSU	30.0%	40.2%	36.9%
SAUM	19.3%	48.1%	36.9%
UAF	44.0%	59.5%	56.1%
UAFS	47.5%	48.0%	42.3%
UALR	20.8%	50.0%	58.8%
UAM	30.7%	27.8%	31.6%
UAPB	27.3%	35.3%	42.3%
UCA	26.2%	55.3%	45.8%
Total	29.1%	47.7%	44.9%

Table 4.5: Graduation Rates of Athletes by Institution - Universities

The new ADHE Athletic Annual Graduation Rates also provides information on students graduating at the home or transfer institution and continued enrollment at the home or transfer institution along with drop-out rates. Success is indicated by either graduating or being still enrolled at any Arkansas institution.

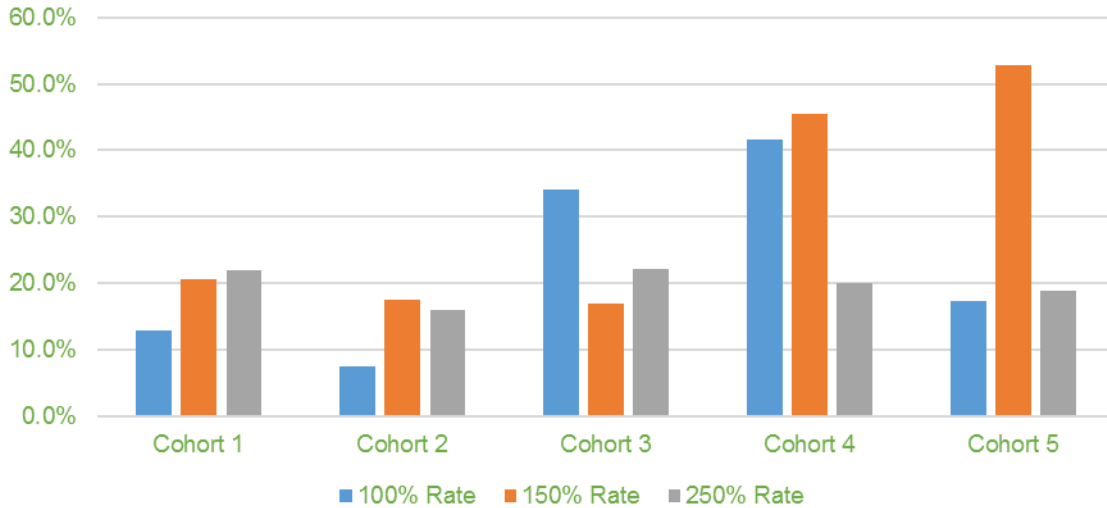
100% Rate AY2013	Graduation Rate		Still Enrolled		Dropped Out	Success
	Home	Transfer	Home	Transfer		
ASUJ	31.8%	1.8%	31.8%	10.0%	24.5%	75.5%
ATU	12.6%	1.0%	30.1%	11.7%	44.7%	55.3%
HSU	30.0%	2.7%	18.2%	6.4%	42.7%	57.3%
SAUM	19.3%	4.8%	18.1%	10.8%	47.0%	53.0%
UAF	44.0%	1.5%	20.9%	3.7%	49.9%	70.1%
UAFS	47.5%	5.0%	7.5%	5.0%	35.0%	65.0%
UALR	20.8%	4.2%	14.6%	10.4%	50.0%	50.0%
UAM	30.7%	1.1%	11.4%	11.4%	45.5%	54.5%
UAMS	0.0%	0.0%	0.0%	0.0%	0.0%	0.0%
UAPB	27.3%	3.0%	39.4%	3.0%	27.3%	72.7%
UCA	26.2%	3.9%	33.0%	7.8%	29.1%	70.9%
Total	29.1%	2.6%	23.0%	8.2%	37.1%	62.9%
150% Rate AY2011	Graduation Rate		Still Enrolled		Dropped Out	Success
	Home	Transfer	Home	Transfer		
ASUJ	60.0%	3.2%	2.1%	6.3%	28.4%	71.6%
ATU	38.3%	13.6%	2.5%	6.2%	39.5%	60.5%
HSU	40.2%	3.4%	4.6%	3.4%	48.3%	51.7%
SAUM	48.1%	7.4%	1.9%	5.6%	37.0%	63.0%

UAF	59.5%	4.0%	1.6%	2.4%	32.5%	67.5%
UAFS	48.0%	20.0%	12.0%	0.0%	20.0%	80.0%
UALR	50.0%	5.6%	2.8%	8.3%	33.3%	66.7%
UAM	27.8%	6.9%	0.0%	5.6%	59.7%	40.3%
UAMS	0.0%	0.0%	0.0%	0.0%	0.0%	0.0%
UAPB	35.3%	7.8%	0.0%	5.9%	51.0%	49.0%
UCA	55.3%	6.4%	4.3%	5.3%	28.7%	71.3%
Total	47.7%	6.7%	2.6%	4.9%	38.1%	61.9%
<b>250% Rate AY2007</b>	Graduation Rate		Still Enrolled		Dropped Out	Success
	Home	Transfer	Home	Transfer		
ASUJ	46.4%	4.1%	0.0%	4.1%	45.4%	54.6%
ATU	47.7%	9.1%	0.0%	5.7%	37.5%	52.5%
HSU	36.9%	6.0%	0.0%	1.2%	56.0%	44.0%
SAUM	36.9%	10.8%	1.5%	0.0%	50.8%	49.2%
UAF	56.1%	5.6%	1.9%	0.9%	35.5%	64.5%
UAFS	42.3%	7.7%	0.0%	0.0%	50.0%	50.0%
UALR	58.8%	5.9%	0.0%	2.9%	32.4%	67.6%
UAM	31.6%	8.8%	0.0%	1.8%	57.9%	42.1%
UAMS	0.0%	0.0%	0.0%	0.0%	0.0%	0.0%
UAPB	42.3%	7.7%	0.0%	0.0%	50.0%	50.0%
UCA	45.8%	6.3%	0.7%	4.2%	43.0%	57.0%
Total	44.9%	4.9%	0.5%	2.4%	45.2%	54.8%

Table 4.6: Graduation Rates of Athletes by Institution and Time to Degree Detailed - Universities

The graph below illustrates the athletic graduation rates for 2-Year Colleges. There is no discernable pattern for these graduation rates which is generally due to the small number of athletes at 2-Year Colleges.

### ADHE Annual Graduation Rates for Athletes: 2-Year Colleges



<u>100% Rate</u>	<u>150% Rate</u>	<u>250% Rate</u>
Cohort 1 = AY2011	Cohort 1 = AY2010	Cohort 1 = AY2008
Cohort 2 = AY2012	Cohort 2 = AY2011	Cohort 2 = AY2009
Cohort 3 = AY2013	Cohort 3 = AY2012	Cohort 3 = AY2010
Cohort 4 = AY2014	Cohort 4 = AY2013	Cohort 4 = AY2011
Cohort 5 = AY2015	Cohort 5 = AY2014	Cohort 5 = AY2012

Figure 4.10: Athlete Graduation Rates by Cohort and Time to Degree - Colleges

Per the below table, the graduation rates for athletes at 2-Year Colleges are generally lower than all students for the cohorts reviewed though there is notable improvement in 100% rate for the last two cohorts.

ADHE Annual Graduation Rates for Athletes: 2-Year Colleges									
Cohort	Athletes			All Students			Difference		
	100% Rate	150% Rate	250% Rate	100% Rate	150% Rate	250% Rate	100% Rate	150% Rate	250% Rate
Cohort 1	12.9%	20.6%	22.0%	13.3%	20.5%	28.5%	-0.4%	0.1%	-6.5%
Cohort 2	7.5%	17.6%	16.0%	13.6%	19.8%	28.0%	-6.1%	-2.2%	-12.0%
Cohort 3	34.1%	17.0%	22.1%	15.4%	20.2%	26.5%	18.7%	-3.2%	-4.4%
Cohort 4	41.7%	45.5%	20.0%	17.1%	22.0%	25.6%	24.6%	23.5%	-5.6%
Cohort 5	17.4%	52.8%	18.9%	18.7%	24.2%	25.6%	-1.3%	28.6%	-6.7%

Table 4.7: Graduation Rates of Athletes by Cohort and Time to Degree - Colleges

The below table provides the most recent graduation rates for athletes at 2-Year Colleges.

<b>ADHE Annual Graduation Rates for Athletes: 2-Year Colleges</b>			
<b>Institution</b>	<b>100% Rate</b>	<b>150% Rate</b>	<b>250% Rate</b>
ASUMS	0%	38.5%	11.8%
CCCUA	66.7%	N/A	N/A
NAC	22.2%	60.9%	22.2%
Total	17.4%	52.8%	18.9%

Table 4.8: Graduation Rates of Athletes by Institution - Colleges

The new ADHE Annual Graduation Rates also provide information on students graduating at the home or transfer institution and continued enrollment at the home or transfer institution along with drop-out rates. Success is indicated by either graduating or being still enrolled at any Arkansas institution.

<b>100% Rate AY2015</b>	Graduation Rate		Still Enrolled		Dropped Out	Success
	Home	Transfer	Home	Transfer		
ASUMS	0.0%	0.0%	43.8%	37.5%	18.8%	81.3%
CCCUA	66.7%	0.0%	33.3%	33.3%	0.0%	100.0%
NAC	22.2%	0.0%	40.7%	11.1%	25.9%	74.1%
Total	17.4%	0.0%	41.3%	21.7%	19.6%	80.4%
<b>150% Rate AY2014</b>	Graduation Rate		Still Enrolled		Dropped Out	Success
	Home	Transfer	Home	Transfer		
ASUMS	38.5%	0.0%	0.0%	38.5%	23.1%	76.9%
CCCUA	N/A	N/A	N/A	N/A	N/A	N/A
NAC	60.9%	0.0%	0.0%	52.2%	0.0%	100.0%
Total	52.8%	0.0%	0.0%	47.2%	0.0%	91.7%
<b>250% Rate AY2012</b>	Graduation Rate		Still Enrolled		Dropped Out	Success
	Home	Transfer	Home	Transfer		
ASUMS	11.8%	0.0%	0.0%	5.9%	82.4%	17.6%
CCCUA	N/A	N/A	N/A	N/A	N/A	N/A
NAC	22.2%	16.7%	0.0%	25.0%	36.1%	63.9%
Total	18.9%	11.3%	0.0%	18.9%	50.9%	49.1%

Table 4.9: Graduation Rates of Athletes by Institution and Time to Degree Detailed - Colleges

## Graduation Rates by Sport

The table below provides graduation rates by sport.

ADHE Annual Graduation Rates for Athletes by Sport							
	AY2013 4yr/ AY2015 2yr	AY2011 4yr/ AY2014 2yr	AY2007 4yr/ AY2012 2yr		AY2013 4yr/ AY2015 2yr	AY2011 4yr/ AY2014 2yr	AY2007 4yr/ AY2012 2yr
<b>Football</b>	<b>100% Rate</b>	<b>150% Rate</b>	<b>250% Rate</b>	<b>Men's Basketball</b>	<b>100% Rate</b>	<b>150% Rate</b>	<b>250% Rate</b>
<b>4-Year Universities</b>	19.7%	39.6%	36.4%	<b>4-Year Universities</b>	8.8%	46.2%	41.5%
<b>2-Year Colleges</b>	N/A	N/A	N/A	<b>2-Year Colleges</b>	0.0%	50.0%	12.5%
<b>Women's Basketball</b>	<b>100% Rate</b>	<b>150% Rate</b>	<b>250% Rate</b>	<b>Baseball</b>	<b>100% Rate</b>	<b>150% Rate</b>	<b>250% Rate</b>
<b>4-Year Universities</b>	34.0%	37.5%	46.8%	<b>4-Year Universities</b>	17.0%	38.6%	40.9%
<b>2-Year Colleges</b>	9.1%	50.0%	42.9%	<b>2-Year Colleges</b>	13.3%	40.0%	15.6%
<b>Track</b>	<b>100% Rate</b>	<b>150% Rate</b>	<b>250% Rate</b>	<b>All Others</b>	<b>100% Rate</b>	<b>150% Rate</b>	<b>250% Rate</b>
<b>4-Year Universities</b>	29.3%	58.8%	52.1%	<b>4-Year Universities</b>	47.3%	57.8%	52.2%
<b>2-Year Colleges</b>	N/A	N/A	N/A	<b>2-Year Colleges</b>	55.6%	100.0%	16.7%

Table 4.10: Graduation Rates of Athletes by Sport

## Remediation Rates of Student Athletes

The methodology used for remediation rates of student athletes is the same as that used in the regular remediation report except that we are counting student athletes only. Because athletic information is collected in an annual file (not a term file), the most recent remediation rate that can be produced is for the 2016 Fall term (AY2017).

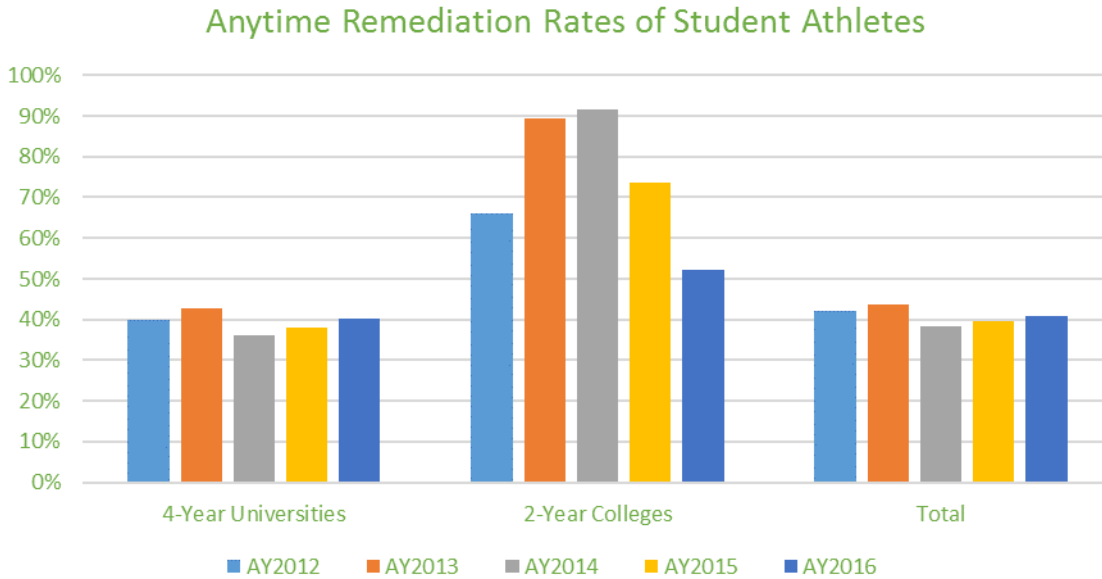


Figure 4.11: Athlete Remediation Rates by Institution Type

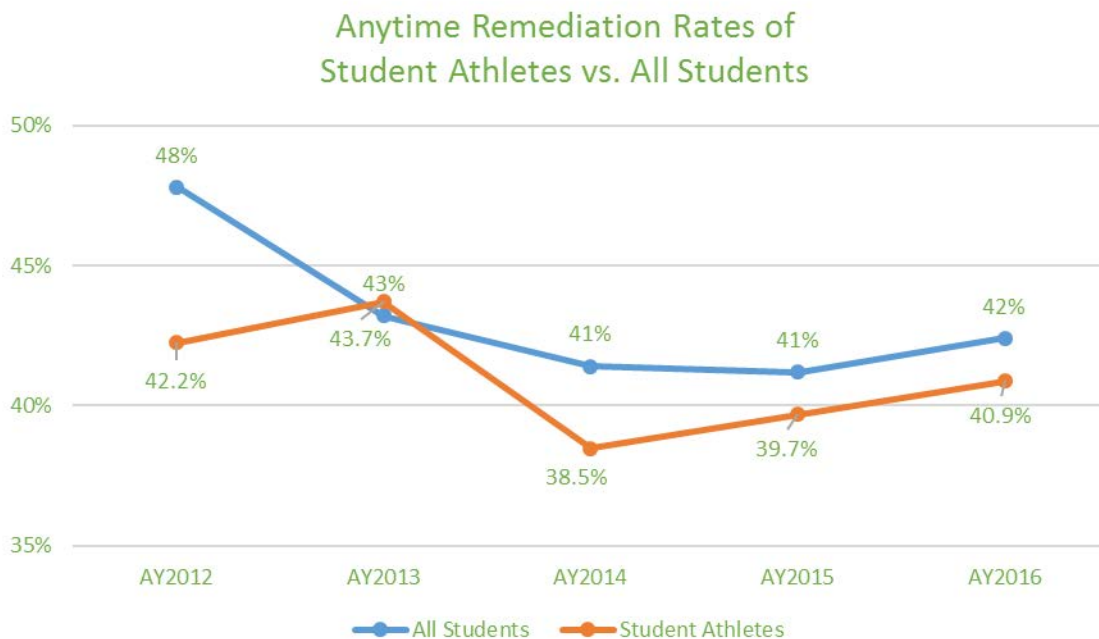


Figure 4.12: Athlete and All Student Remediation Rates



Overall, student athletes have lower Anytime Remediation Rates than All Students.

### Anytime Remediation Rates by Sport: AY2016

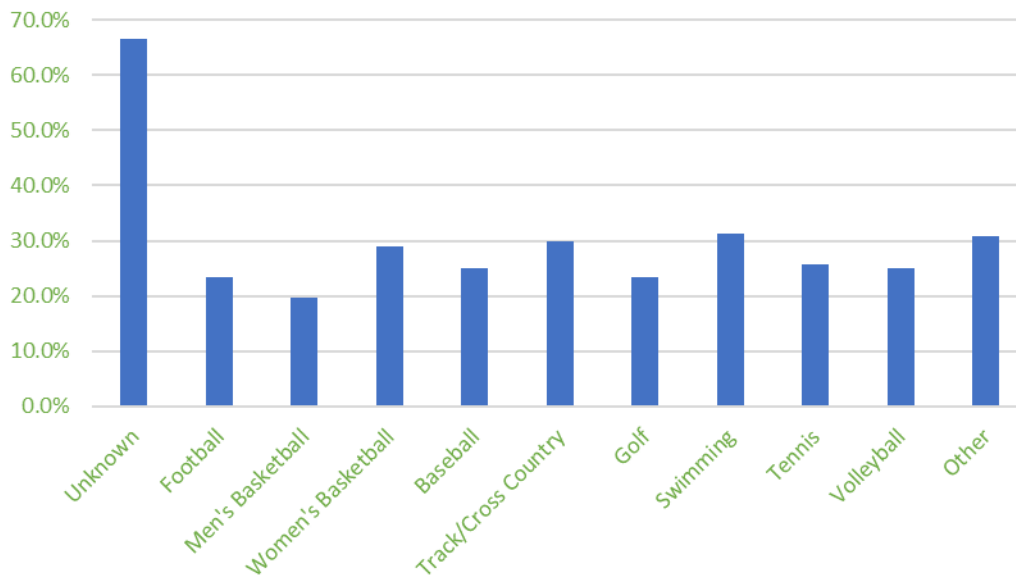


Figure 4.13: Remediation Rates by Sport

As shown above, Football, Golf, and Men's Basketball have the lowest remediation rates for AY2015 (the 2014 Fall term).

### Graduation Rates of Remediated Student Athletes

The following graph compares the graduation rates between Remediated Student Athletes and All Student Athletes at both 4-Year Universities and 2-Year Colleges.

Comparison of ADHE Annual Graduation Rates between Remediated Athletes and All Student Athletes.			
	AY2013 4yr/ AY2015 2yr	AY2011 4yr/ AY2014 2yr	AY2007 4yr/ AY2012 2yr
<b>Remediated Athletes</b>	<b>100% Rate</b>	<b>150% Rate</b>	<b>250% Rate</b>
4-Year Universities	16.8%	33.9%	35.1%
2-Year Colleges	14.7%	43.5%	10.3%
<b>All Student Athletes</b>	<b>100% Rate</b>	<b>150% Rate</b>	<b>250% Rate</b>
4-Year Universities	29.1%	47.7%	44.9%
2-Year Colleges	17.4%	52.8%	18.9%
<b>Difference</b>	<b>100% Rate</b>	<b>150% Rate</b>	<b>250% Rate</b>
4-Year Universities	-12.3%	-13.8%	-9.8%
2-Year Colleges	-2.7%	-9.3%	-8.6%

Table 4.11: Graduation Rates of Athletes by Remediation Need

The following attachments can be found online at [www.adhe.edu](http://www.adhe.edu).

- |                |  |
|----------------|--|
| Attachment 4-A | Overview of Athletic Participation   |
| Attachment 4-B | Retention Rates of All Cohort Athletes, Remediated Athletes, and Non-Remediated Athletes |
| Attachment 4-C | Graduation Rates of Athletes including by Sport  |