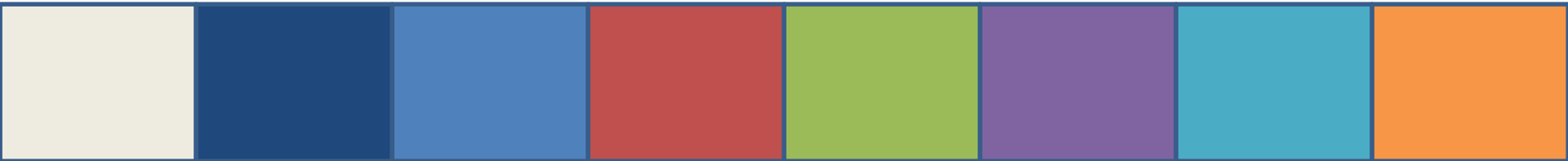


REGULAR MEETING OF THE ARKANSAS HIGHER EDUCATION COORDINATING BOARD

April 20, 2018



Nick Fuller
Deputy Director

**AGENDA ITEM NO. 11:
DISTRIBUTION OF MINERAL LEASE FUNDS**

Distribution of Mineral Lease Funds

- It is recommended that up to \$750,000 be allocated (from the H.E. Research Development Fund) to the University of Arkansas, Fayetteville for continuing personal services and operating expenses associated with ARE-ON.
- **\$11,913,580.98** has been distributed since May 2007, the first transfer of funds
- The current balance of the Research Development Fund is \$302,763.81.

Nick Fuller
Deputy Director

**AGENDA ITEM NO. 12:
ECONOMIC FEASIBILITY OF A LOAN FOR
NORTH ARKANSAS COLLEGE**



Relevant Information

- \$675,000 with a term of up to five (5) years @ a rate not to exceed 3.74%
- Educational and general purposes
- Revenue Funding Source: Tuition and Fee Revenue
- Proceeds from the loan will be used to provide needed campus-wide energy improvements to bridge the timing difference between the actual acquisition and development cost of a new Enterprise Resource Planning (ERP) and Student Information System (SIS) software package



ACADEMIC COMMITTEE CONSENT AGENDA ITEMS

Consent Items

- *13. Cossatot Community College of the University of Arkansas
 - Certificate of Proficiency in Diesel Engines
 - Certificate of Proficiency in Suspension & Steering
 - Certificate of Proficiency in Brakes
 - Certificate of Proficiency in Electrical/Electronics
 - Technical Certificate in Diesel Technology

- *14. Henderson State University
 - Master of Science in Nursing

*Numbers refer to main agenda

Consent Items

- *15. South Arkansas Community College
Certificate of Proficiency in Culinary Arts
Technical Certificate in Culinary Arts

- *16. Southern Arkansas University
Bachelor of Science in Public Health

- *17. Southern Arkansas University – Tech
Associate of Applied Science in Nursing

*Numbers refer to main agenda

Consent Items

- *18. University of Arkansas, Fayetteville
Master of Design Studies with Concentrations in
Resiliency Design & Retail and Hospitality

- *19. University of Arkansas Fort Smith
Associate of Applied Science in Unmanned Aerial Systems

- *20. University of Arkansas at Monticello
Certificate of Proficiency in Manufacturing Principles
Technical Certificate in Industrial Production Technology
Technical Certificate in Advanced Manufacturing Technology
Associate of Applied Science in Advanced Manufacturing
Technology

*Numbers refer to main agenda

Consent Items

- *21. University of Arkansas – Pulaski Technical College
Technical Certificate & Associate of Science in Emergency
Medical Sciences – Paramedic

- *22. University of Arkansas – Pulaski Technical College
Associate of Science in Health Information Technology

- *23. University of Arkansas – Pulaski Technical College
Associate of Science in Surgical Technology

*Numbers refer to main agenda



AGENDA ITEM #24

INSTITUTIONAL CERTIFICATION ADVISORY COMMITTEE:RESOLUTIONS

**Ms. Alana Boles, Program Director of Private
Career and Out-of-State Education**

Institutional Certification Advisory Committee (ICAC)

- 2 Colleges and Universities
- 14 Programs



AGENDA ITEM #25

LETTERS OF NOTIFICATION

Ms. Lillian Williams, Academic Affairs

Letters of Notification

- Programs approved by the ADHE Director
- Programs must be included on the AHECB agenda prior to initiation
- Programs are reasonable and moderate extensions of existing certificates and degrees



AGENDA ITEM #26

LETTERS OF INTENT

Letters of Intent

- Notification of institutional plans to offer new programs or organizational units that require Coordinating Board approval
- Chief academic officers and chief executive officers can comment on the proposals before consideration by AHECB

Approval of Minutes

- January 26 Regular Meeting
- February 16 Special Meeting
- April 13 Special Meeting

ADHE Staffing



– **Linda Bouillon**
Agency Controller II

- Began on February 26, 2018



– **Kathalene (Kitty) Stevenson**
Receptionist

- Began on March 12, 2018

Agency Projects

- Policy Review
- Higher Ed Master Plan Implementation
- ACTS Review
- Arkansas Future
- Workforce Challenge
- Rule Promulgation
- Regional Workforce Grants
- AA Degree Review
- Legislative Session Preparation
- Co-requisite Remediation
- Funding Model Adjustments
- 15 to Finish
- Math Pathways
- Interstate Passport
- Career Pathways Initiative
- Carl Perkins
- Project Pipeline Repair
- SIS Upgrades



Agenda Item #3
Annual Report of Student Remediation

Sonia Hazelwood
Associate Director, Research & Analytics

Annual Remediation Report

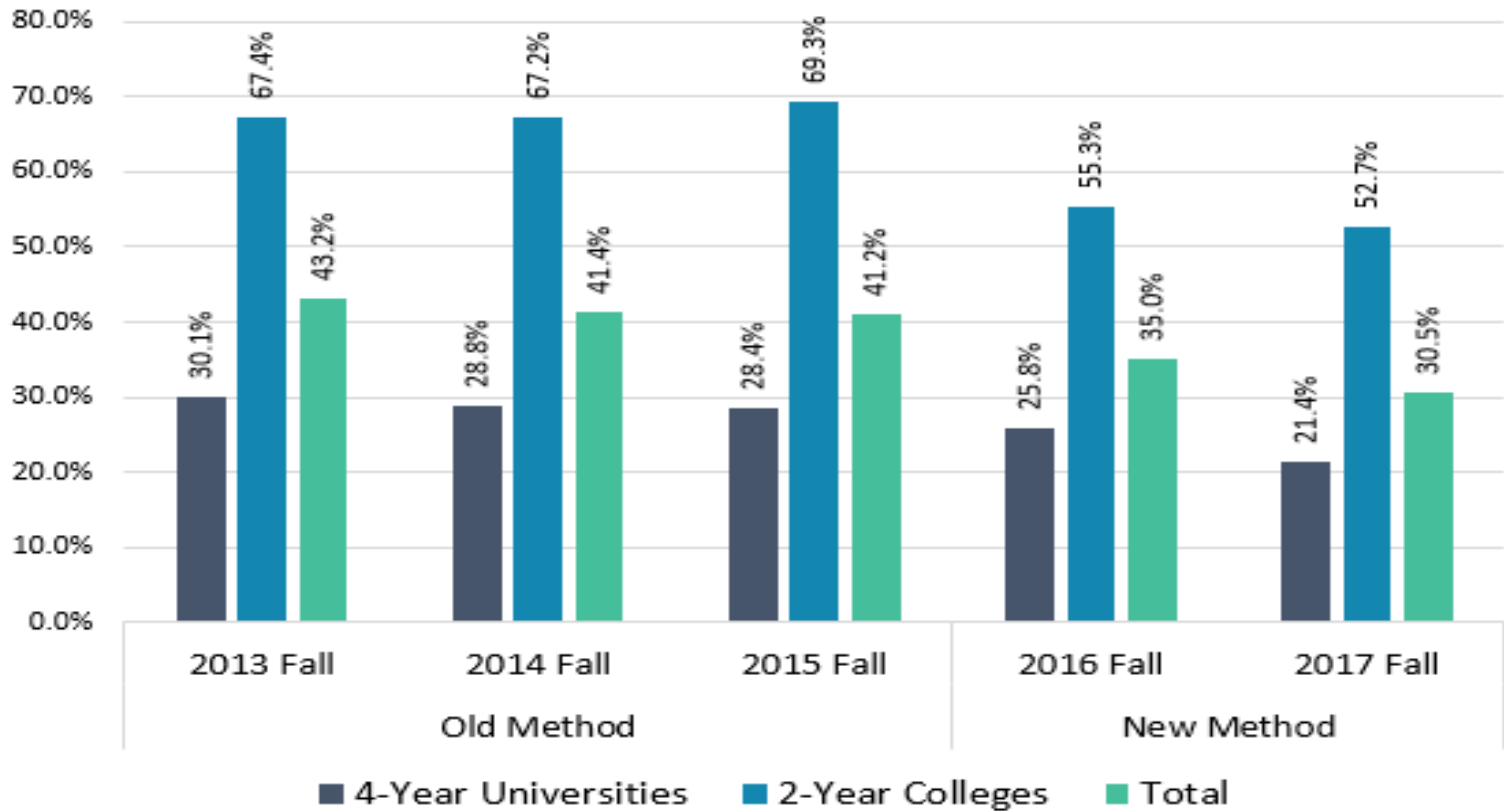
Previous Coordinating Board placement policy required all first-time entering undergraduate students be placed into remedial courses in math, English and reading based on certain cut-off scores on the ACT or other recognized placement tests.

After the Coordinating Board approved a change to the placement policy, institutions were asked to evaluate the readiness of their students and develop a Placement Plan based on sufficient evidence of expected student success in college level math, English and reading intensive courses.

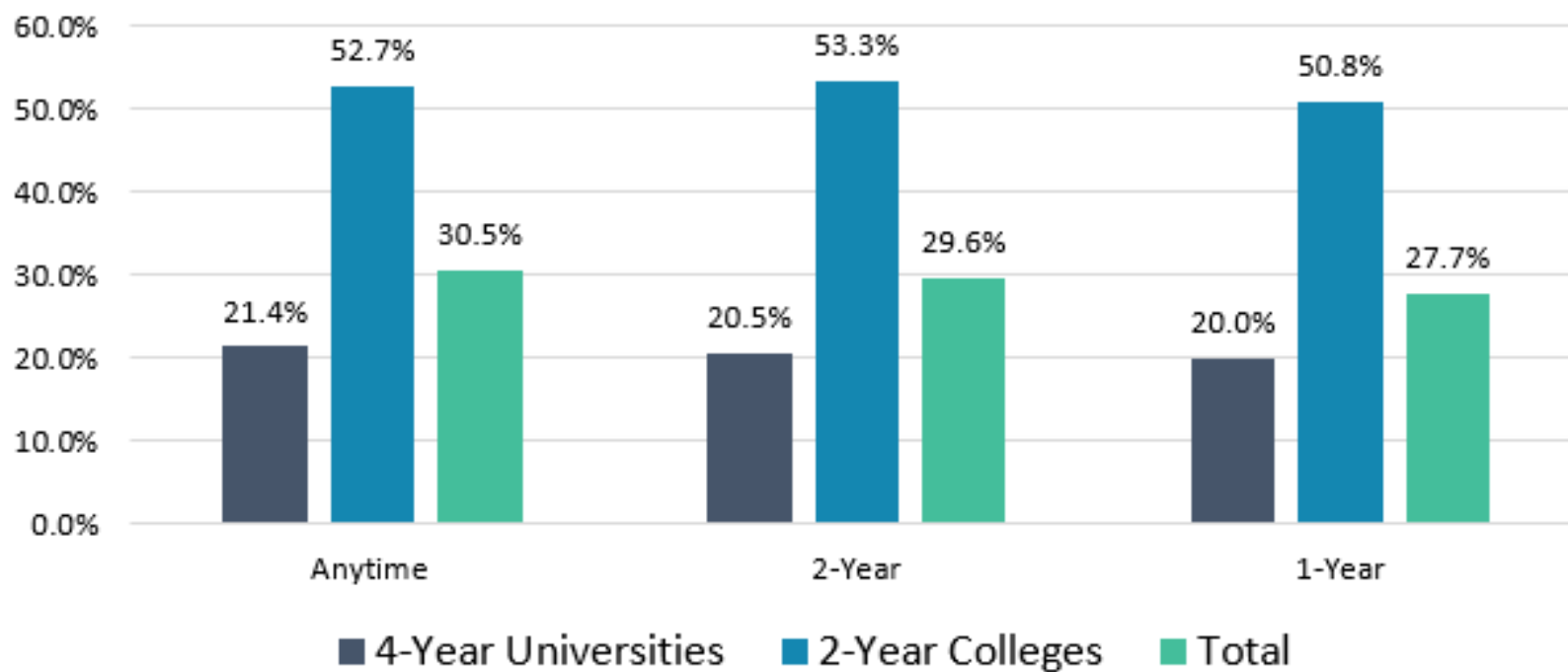
Due to the change in policy, this report will look at the change in the number of students placed into remedial courses using the institutions' new Placement Plan measures and compare those numbers to the number of students placed into remedial courses using the previous Coordinating Board test score placement policy.

ADHE's Academic Affairs division will be working with campus academic leaders to determine the best way to evaluate this change in placement policy, and the most informative way to report the effectiveness of these Placement Plans to the Coordinating Board in next year's Annual Report on Student Remediation.

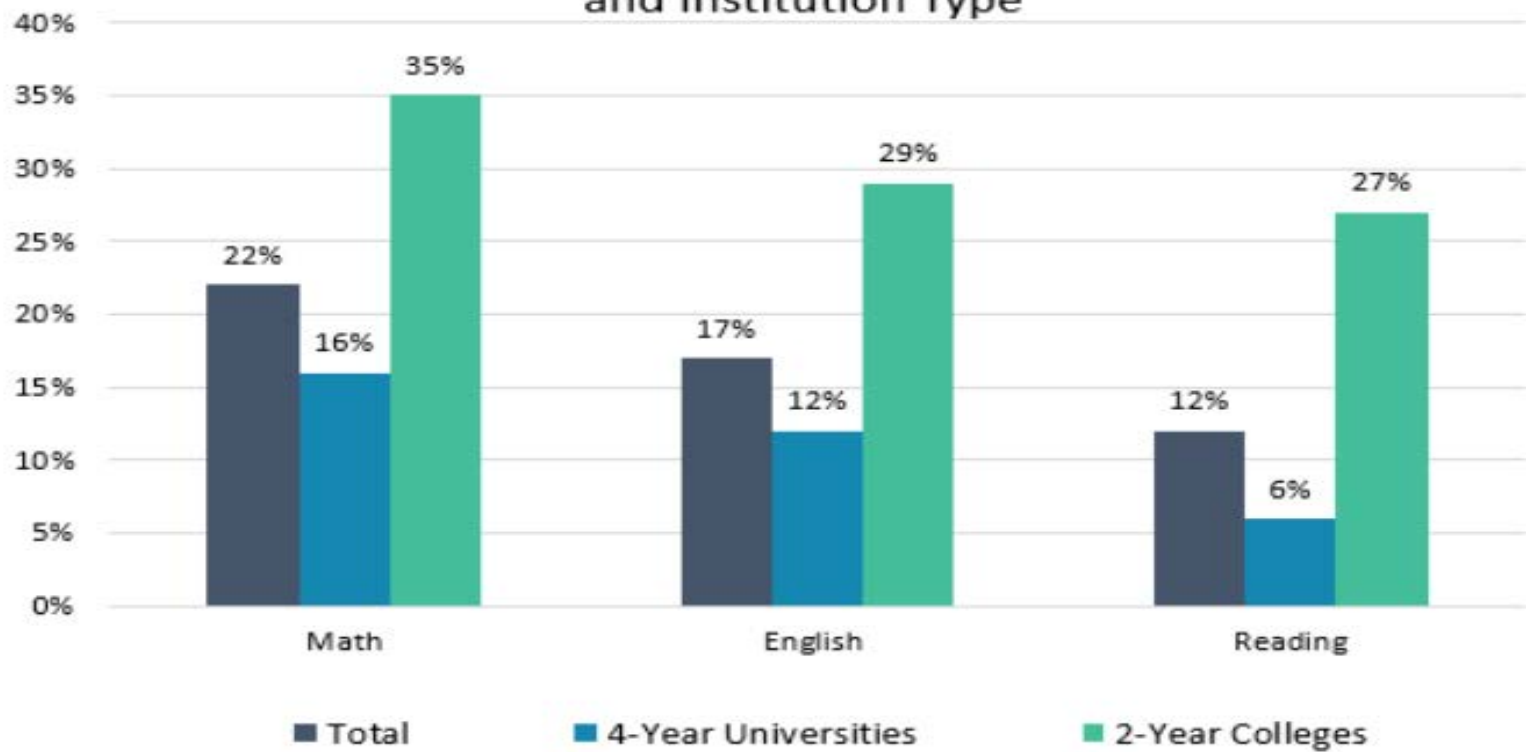
Anytime Remediation Rate: History AY2014-AY2018



Comparison of Remediation Rates



Anytime Remediation Rates by Subject Area and Institution Type





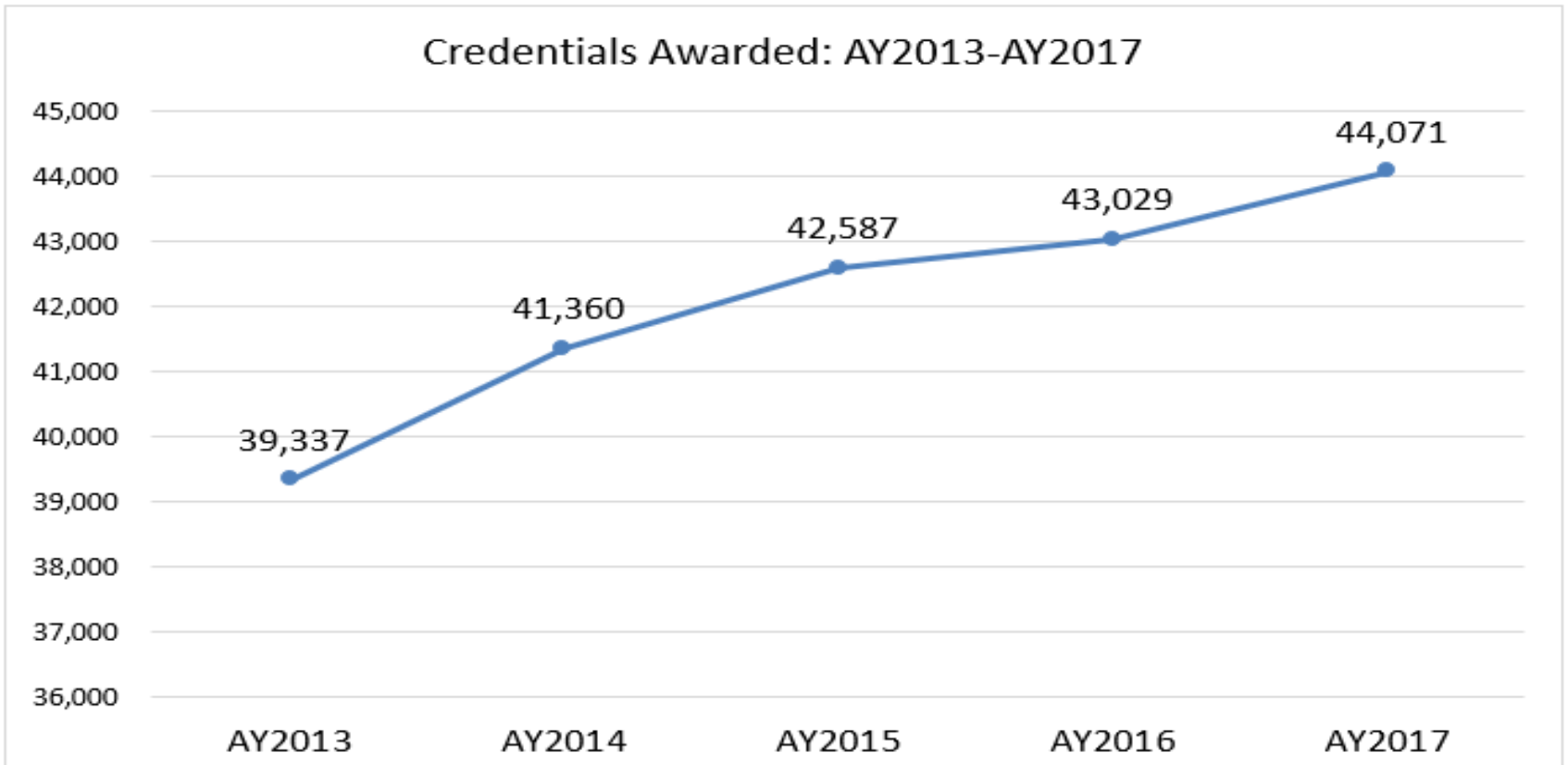
Agenda Item #4
Annual Report of Credentials Awarded

Sonia Hazelwood
Associate Director, Research & Analytics

Certificates and Degrees Awarded by Arkansas Higher Education Institutions

Every year colleges and universities submit a Graduated Student File to the Arkansas Higher Education Information System (SIS). This file contains a record for every certificate and degree awarded to students by that institution between July 1st and June 30th of each year. This year's annual report includes AY2017 credentials awarded between July 1, 2016 and June 30, 2017.

Certificates and Degrees Awarded

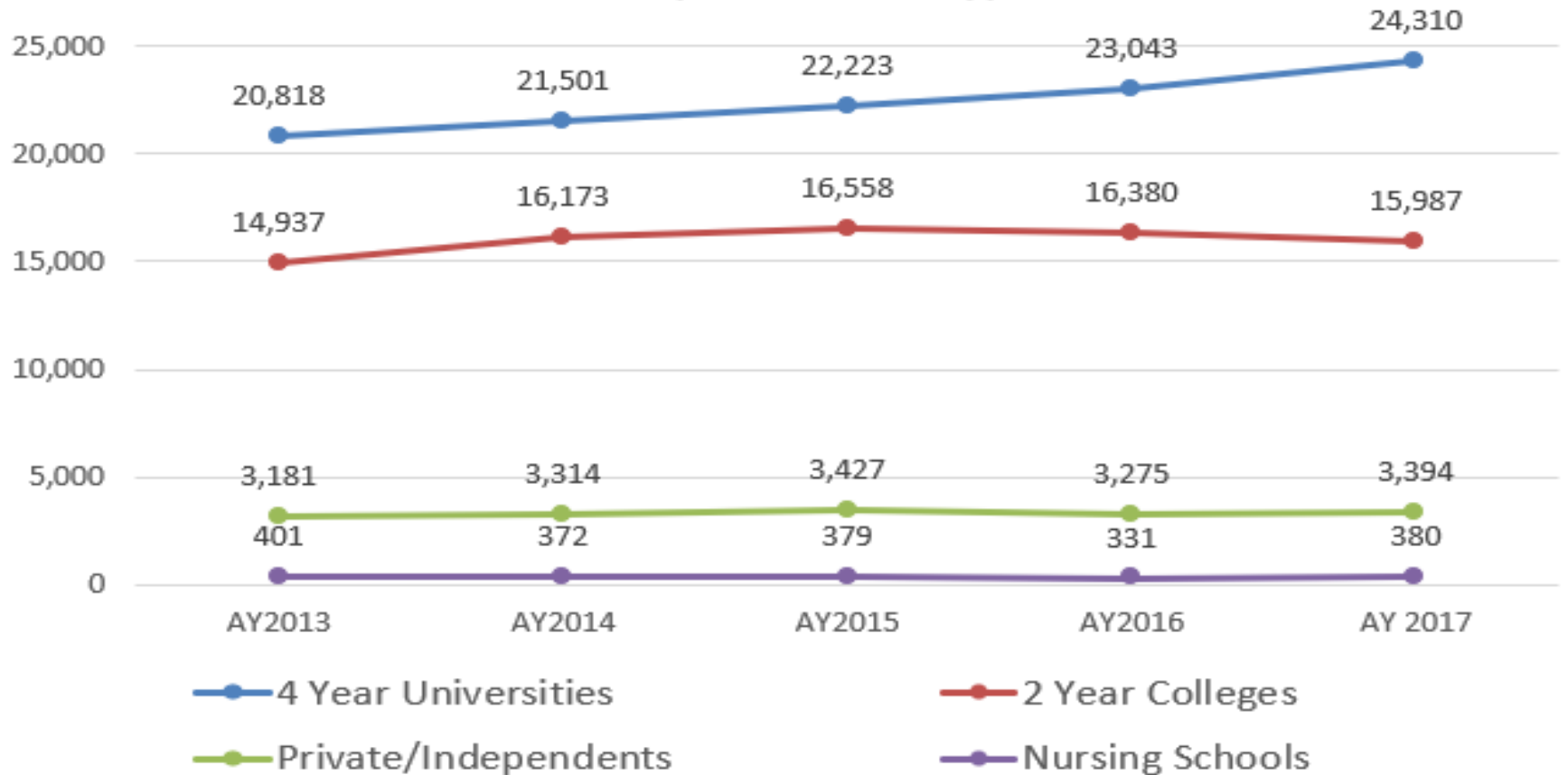


Certificates and Degrees Awarded

The last five academic years show a steady growth of credentials with 44,071 credentials awarded in AY2017. The greatest 5-year percentage increase was exhibited by the four-year universities with 16.8% representing an increase of 3,492 credentials.

Institution Type	AY2013	AY2014	AY2015	AY2016	AY 2017	1-Year Change	5-Year Change
4 Year Universities	20,818	21,501	22,223	23,043	24,310	5.5%	16.8%
2 Year Colleges	14,937	16,173	16,558	16,380	15,987	-2.4%	7.0%
Private/Independents	3,181	3,314	3,427	3,275	3,394	3.6%	6.7%
Nursing Schools	401	372	379	331	380	14.8%	-5.2%
Total	39,337	41,360	42,587	43,029	44,071	2.4%	12.0%

Credentials Awarded by Institution Type: AY2013-AY2017



Degree Level	AY2013	AY2014	AY2015	AY2016	AY2017	1-Year Change	5-Year Change
Certificate of Proficiency	4,928	5,237	5,406	5,784	6,176	6.8%	25.3%
Technical Certificate	4,876	5,422	5,633	5,435	5,183	-4.6%	6.3%
Diploma, Nursing	401	372	379	331	144	-56.5%	-64.1%
Associate Degree	8,325	8,729	9,032	8,605	8,622	0.2%	3.6%
Advanced Certificate	28	22	33	24	14	-41.7%	-50.0%
Baccalaureate Degree	14,156	15,286	15,663	15,919	16,047	0.8%	13.4%
Post-Baccalaureate Cert.	295	264	261	250	257	2.8%	-12.9%
Master's Degree	5,166	4,799	4,812	5,228	6,092	16.5%	17.9%
Post-Masters, Specialist, Post-First Prof Deg/Cert	180	244	394	411	514	25.1%	185.6%
Doctoral Degree - Research/Scholarship	293	273	294	308	291	-5.5%	-0.7%
Doctoral Degree - Professional Practice	689	712	680	734	731	-0.4%	6.1%
Overall - Summary	39,337	41,360	42,587	43,029	44,071	2.4%	12.0%



**Agenda Item #5
Annual Report of Student Retention
And Graduation Rates**

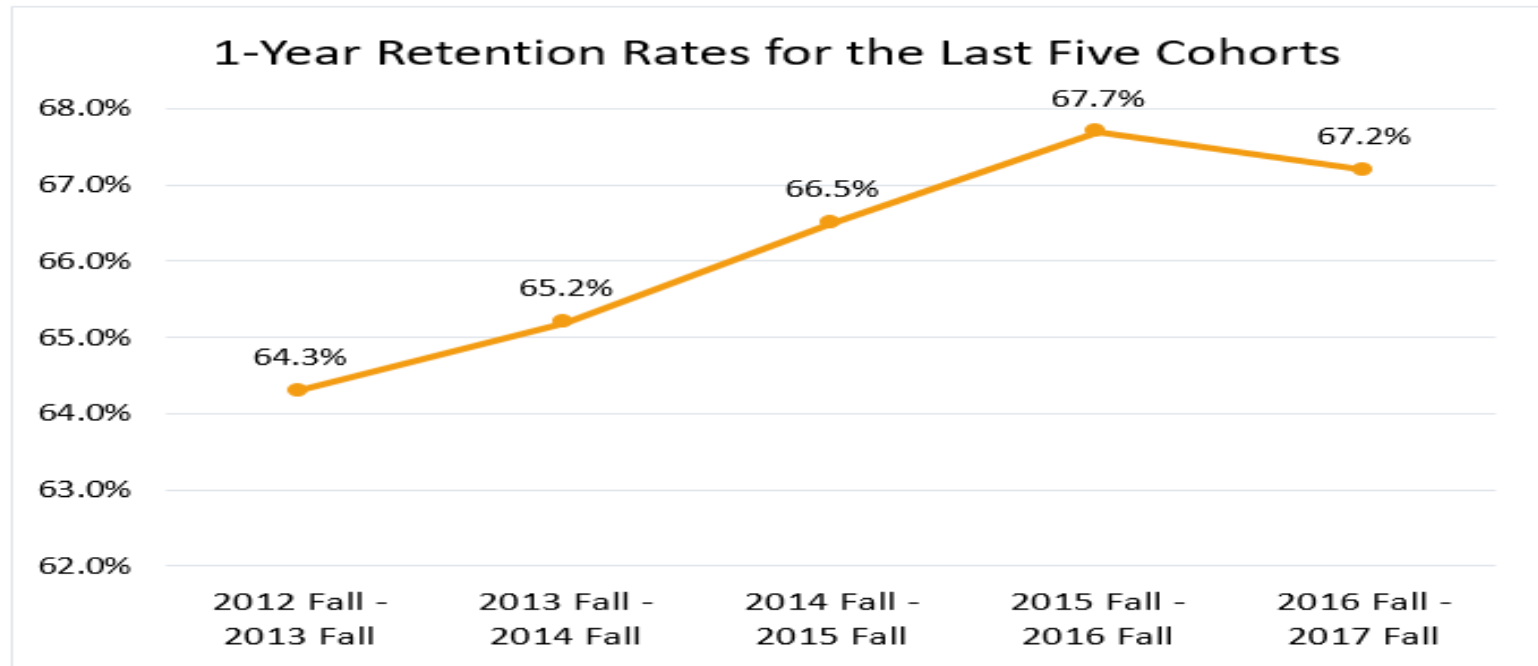
Sonia Hazelwood
Associate Director, Research & Analytics

Student Retention and Graduation Rates

Statewide retention and graduation rate information for students entering Arkansas higher education is presented here for both public and private institutions. ADHE's Student Information System (SIS) enables multi-year student retention and graduation tracking in compliance with federal Student-Right-to-Know legislation as well state law. SIS tracks student enrollments and completions for multiple years at their originating, as well as in other public and private colleges and universities within the state.

Retention

The retention calculations are based on fall-to-fall comparisons of the students in the IPEDS cohort of first-time entering, full-time, and credential-seeking students from the fall term only for all institution types. The following represents the one-year retention rates for five cohorts.



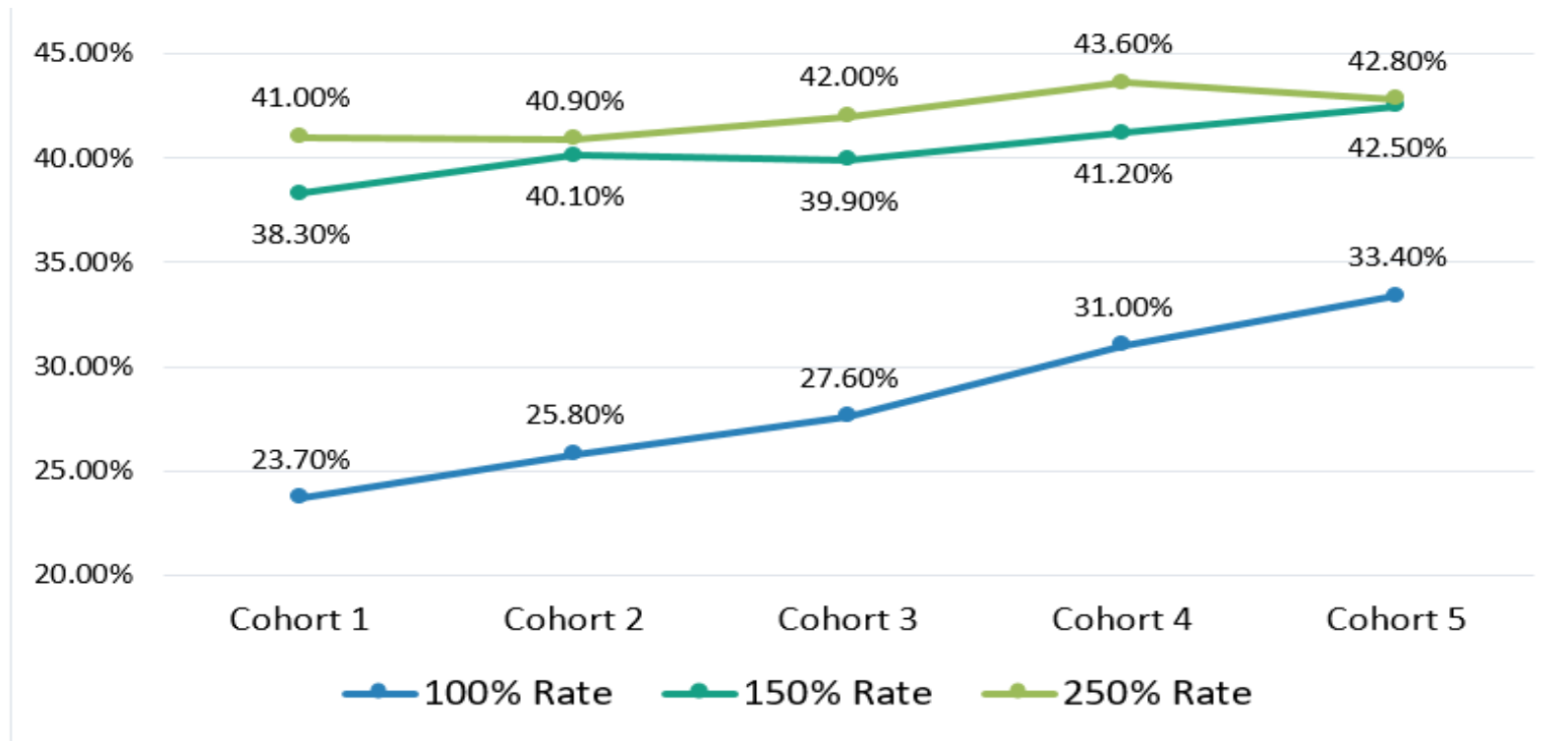
Retention – All Institution Types

As shown below, the Private/Independent Institutions and the 4-Year Universities have higher retention rates than the 2-Year Colleges. This is generally due to the lower rates of full-time enrollment and the higher rates of remediation at the 2-Year Colleges.

1-Year Retention Rates					
Inst. Type	2012 Fall - 2013 Fall	2013 Fall - 2014 Fall	2014 Fall - 2015 Fall	2015 Fall - 2016 Fall	2016 Fall - 2017 Fall
4-Year Universities	70.2%	71.1%	72.2%	72.0%	73.2%
2-Year Colleges	49.1%	49.9%	51.0%	53.0%	52.0%
Private/Independents	73.8%	75.2%	72.0%	75.3%	67.7%
Total	64.3%	65.2%	66.5%	67.7%	67.2%

Graduation Rates – 4-Year Universities

The graduation rate calculations are based on a different cohort than retention. This cohort is defined as first-time entering, full- and part-time, credential-seeking students from the entire academic year. Graduation rates are calculated after four years (100%), after six years (150%) and after ten years (250%).



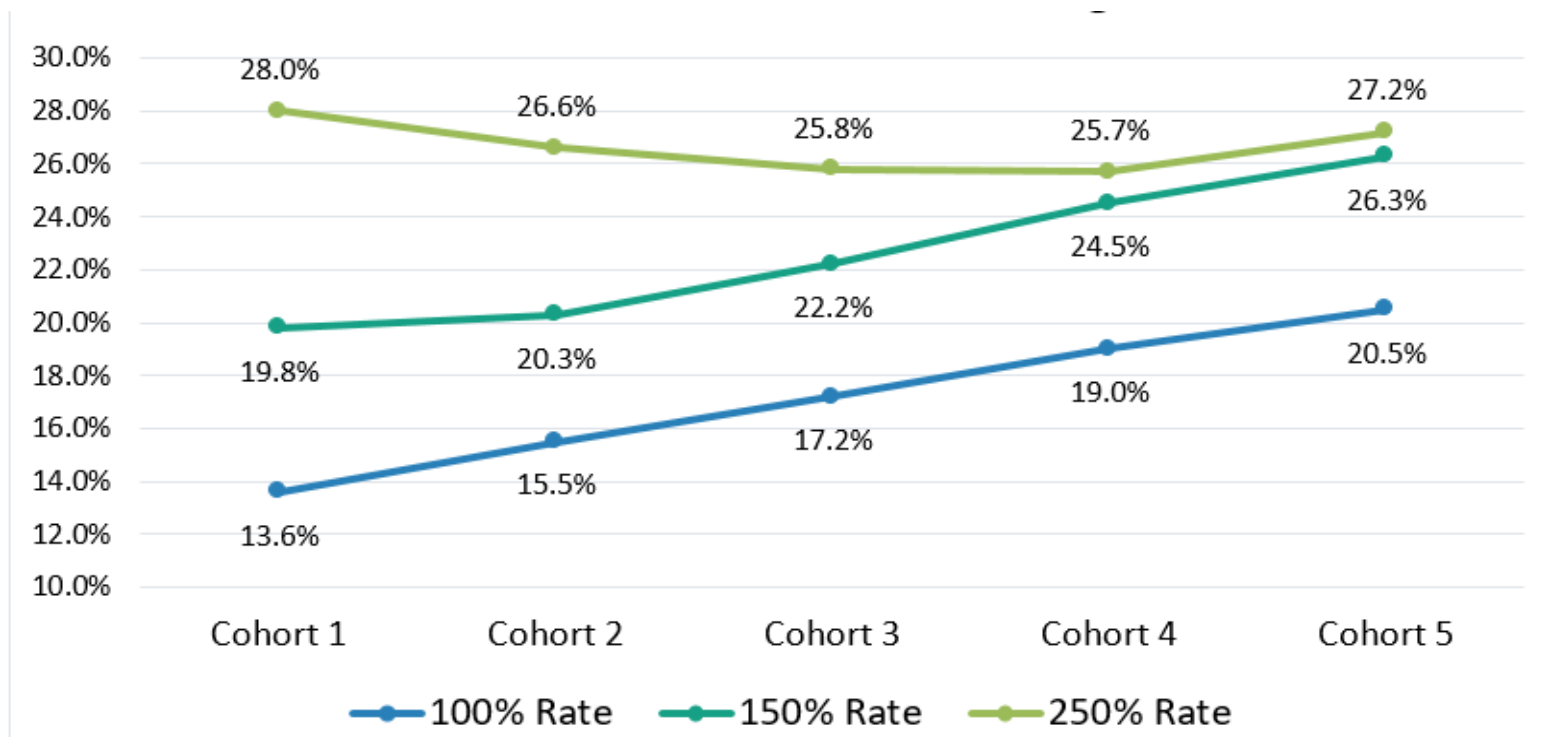
Success Rates – 4-Year Universities

The following table provides information on students graduating at the home or transfer institution and continued enrollment at the home or transfer institution along with dropout rates. Success is indicated by either graduating or continued enrollment at any Arkansas institution.

100% Rate: 4-Year Universities						
Cohort Year	Graduation Rate		Still Enrolled		Dropped Out	Success
	Home	Transfer	Home	Transfer		
Cohort 1 = AY2010	23.7%	2.5%	26.6%	12.1%	35.1%	64.9%
Cohort 2 = AY2011	25.8%	3.2%	25.3%	11.4%	34.3%	65.7%
Cohort 3 = AY2012	27.6%	3.3%	24.1%	11.0%	34.1%	65.9%
Cohort 4 = AY2013	31.0%	3.0%	23.0%	10.7%	32.3%	67.7%
Cohort 5 = AY2014	33.4%	3.1%	22.5%	9.8%	31.1%	68.9%
150% Rate: 4-Year Universities						
Cohort Year	Graduation Rate		Still Enrolled		Dropped Out	Success
	Home	Transfer	Home	Transfer		
Cohort 1 = AY2008	38.3%	6.1%	6.7%	10.2%	38.6%	61.4%
Cohort 2 = AY2009	40.1%	6.2%	5.9%	10.2%	37.6%	62.4%
Cohort 3 = AY2010	39.9%	5.8%	5.5%	8.6%	40.2%	59.8%
Cohort 4 = AY2011	41.2%	6.4%	5.2%	8.6%	38.9%	61.1%
Cohort 5 = AY2012	42.5%	6.4%	4.8%	7.5%	38.8%	61.2%

Graduation Rates – 2-Year Colleges

The graduation rate calculations are based on a different cohort than retention. This cohort is defined as first-time entering, full- and part-time, credential-seeking students from the entire academic year. Graduation rates are calculated after two years (100%), after three years (150%) and after five years (250%).



Success Rates – 2-Year Colleges

The following table provides information on students graduating at the home or transfer institution and continued enrollment at the home or transfer institution along with dropout rates. Success is indicated by either graduating or being still enrolled at any Arkansas institution.

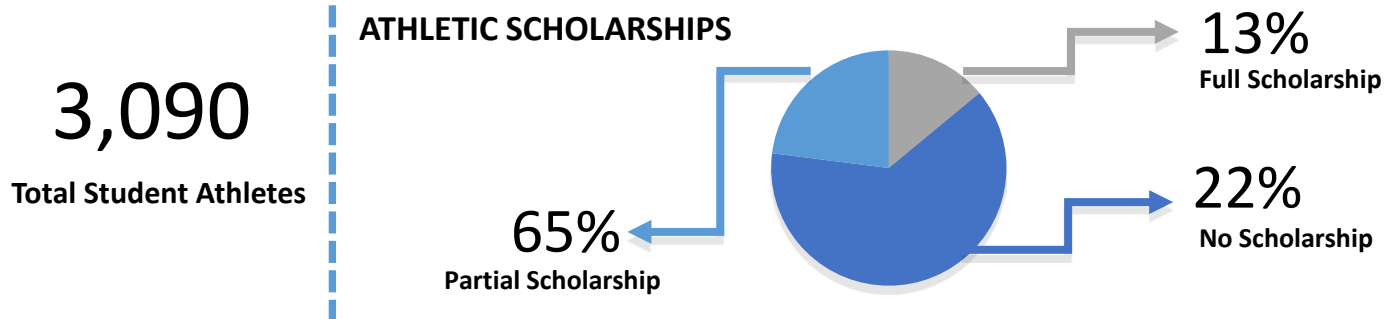
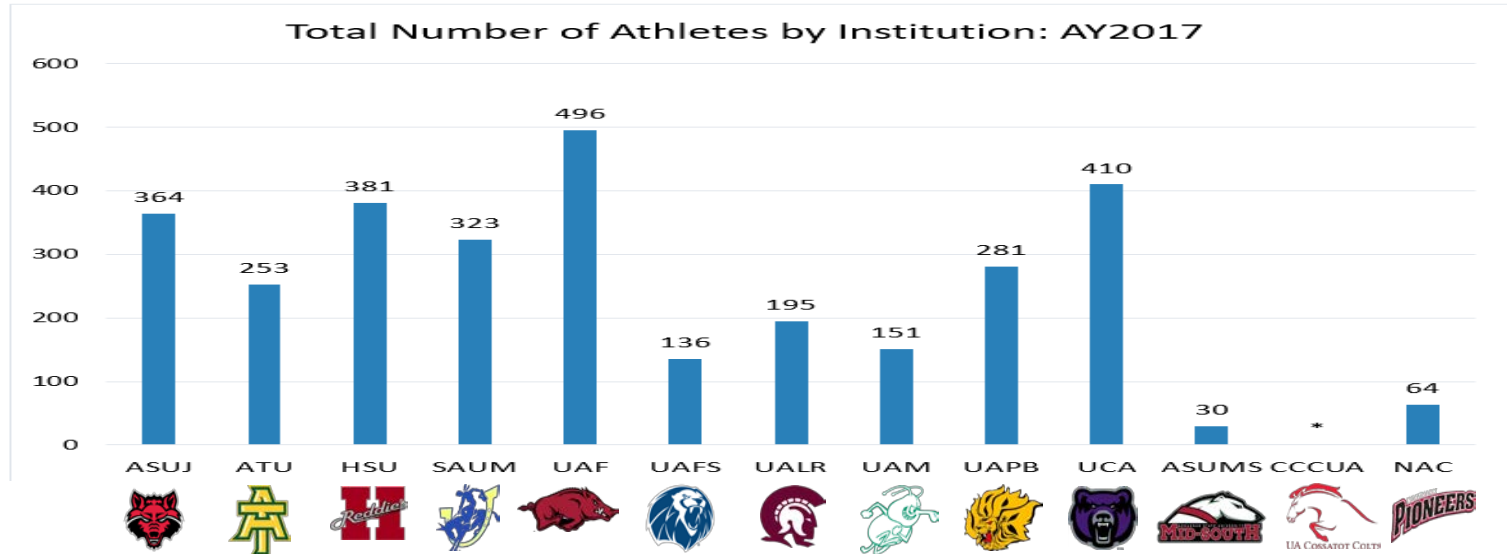
100% Rate: 2-Year Colleges						
Cohort Year	Graduation Rate		Still Enrolled		Dropped Out	Success
	Home	Transfer	Home	Transfer		
Cohort 1 = AY2012	13.6%	0.2%	43.5%	6.0%	36.7%	63.3%
Cohort 2 = AY2013	15.5%	0.2%	41.4%	6.1%	36.8%	63.2%
Cohort 3 = AY2014	17.2%	0.3%	39.3%	6.8%	36.4%	63.6%
Cohort 4 = AY2015	19.0%	0.3%	38.6%	6.7%	35.4%	64.6%
Cohort 5 = AY2016	20.5%	0.2%	39.0%	6.9%	33.4%	66.6%
150% Rate: 2-Year Colleges						
Cohort Year	Graduation Rate		Still Enrolled		Dropped Out	Success
	Home	Transfer	Home	Transfer		
Cohort 1 = AY2011	19.8%	0.6%	22.4%	10.5%	46.6%	53.4%
Cohort 2 = AY2012	20.3%	0.6%	20.4%	9.3%	49.4%	50.6%
Cohort 3 = AY2013	22.2%	0.5%	18.7%	10.9%	47.6%	52.4%
Cohort 4 = AY2014	24.5%	0.6%	17.4%	12.3%	45.2%	54.8%
Cohort 5 = AY2015	26.3%	0.8%	17.8%	12.6%	42.5%	57.5%



Agenda Item #6
Annual Report of Retention
And Graduation of Student-Athletes

Sonia Hazelwood
Associate Director, Research & Analytics

AY 2017 Athletics Overview



Athletics Retention & Graduation Rates

1-Year Retention:
Athletes vs. All Students

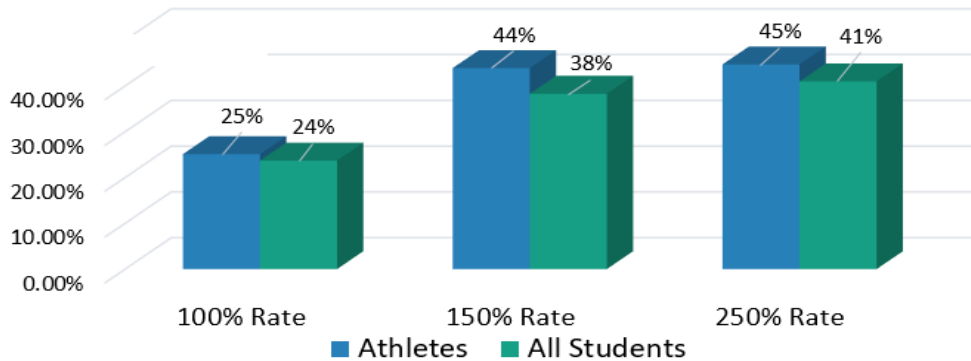
ATHLETES

74%

ALL STUDENTS

67%

Athlete Graduation Rates: 4-Year Universities



PARTICIPATION BY SPORT



939
FOOTBALL



445
BASEBALL



340
BASKETBALL



458
TRACK

+908 Students in Other Sports

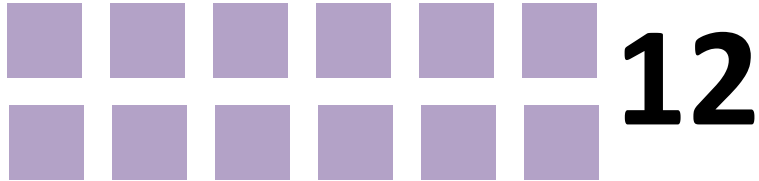


AGENDA ITEM #7 PRODUCTIVITY OF RECENTLY APPROVED PROGRAMS

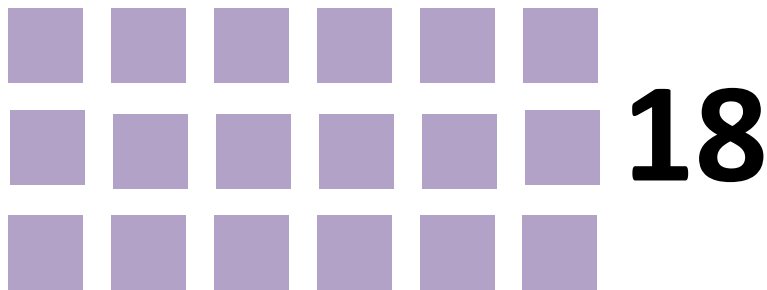
Dr. Jessie J Walker
Senior Associate Director of Academic Affairs
/Research & Analytics

PROGRAM VIABILITY STANDARDS

Graduates Required over 3 Year Period

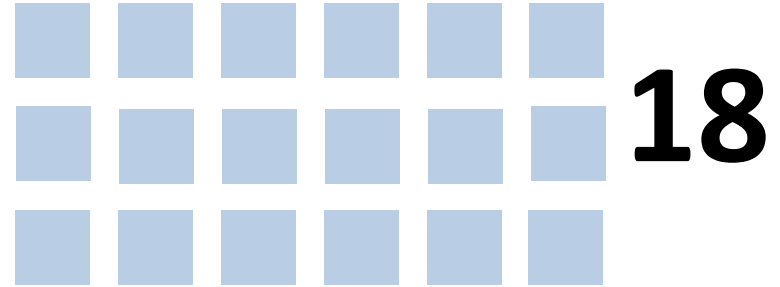


- 01 - CERTIFICATES OF PROFICIENCY
- 02 - TECHNICAL CERTIFICATES
- 03 - ASSOCIATE DEGREES (AAS ONLY)

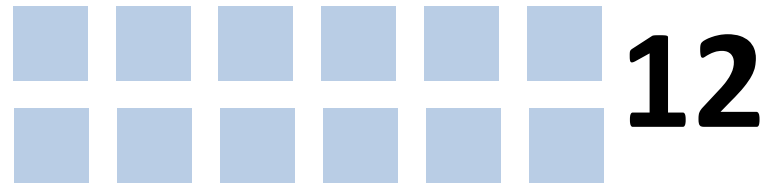


- 03 - ASSOCIATE DEGREES (AA, AS, AND AAT)

Graduates Required over 5 Year Period



- 05 – BACHELOR’S DEGREES



- 05 – BACHELOR’S DEGREES

(in science, mathematics, engineering, foreign languages, middle school education, and secondary education programs for licensure in science and mathematics)

- 07 – MASTER’S DEGREES

- 08 – SPECIALIST DEGREES

- 19 – DOCTORAL: PROFESSIONAL PRACTICE



- 17 – Doctoral: Research/Scholarship

PROGRAM VIABILITY RESULTS

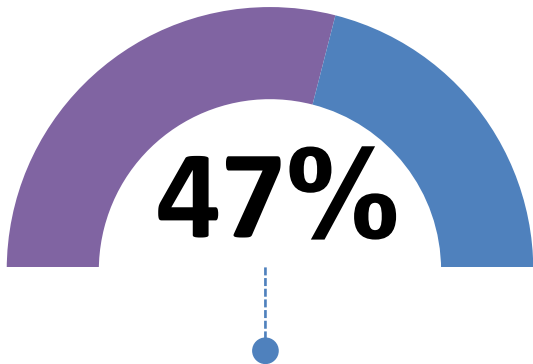
PROGRAMS EVALUATED

77

New Certificates
& Associate Degrees
(Approved in AY2014)

31

New Bachelor's,
Graduate & Professional
Degrees
(Approved in AY2012)



OF ALL RECENTLY
APPROVED PROGRAMS
ARE ON TRACK TO
MEET STANDARDS

NEW PROGRAMS WITH THE MOST GRADUATES

CERTIFICATE

338 GRADUATES
IN THREE
YEARS

PRE-HEALTH CARE STUDIES
UA-PULASKI TECH COLLEGE

ASSOCIATE

100 GRADUATES IN
THREE YEARS

HEALTH INFORMATION TECHNOLOGY
ARKANSAS TECH UNIVERSITY

BACHELOR'S

105 GRADUATES IN
FIVE YEARS

WORLD LANGUAGES
UNIVERSITY OF ARKANSAS AT LITTLE
ROCK

GRADUATE

77 GRADUATES IN
FIVE YEARS

DISASTER PREPAREDNESS - EMERGENCY
MANAGEMENT
ARKANSAS STATE UNIVERSITY



AGENDA ITEM #9

NEW ADVANCED CREDIT PLACEMENT POLICY

Advance Placement Credit Policy

- New Policy requires institutions should award course credit AP exam scores of 3 or greater
- ACTS courses have been assigned to relevant AP exams
- Institutions may choose to award additional credit for those students who score a four (4) or five (5) on an AP exam
- AP exams without corresponding ACTS courses will be awarded at the discretion of the institution

Maria Markham
Director

**AGENDA ITEM NO. 10:
PRODUCTIVITY-BASED FUNDING MODEL RULE
CHANGE**

Summary of Rule Change

- This amendment to the Productivity Funding policy for 2-year institutions is requested to remove the section requiring a non-credit workforce metric to be added to the model beginning with the 2019-2020 fiscal year.
- This change was recommended by the Workforce Taskgroup and accepted by the ACC Board of Directors.