

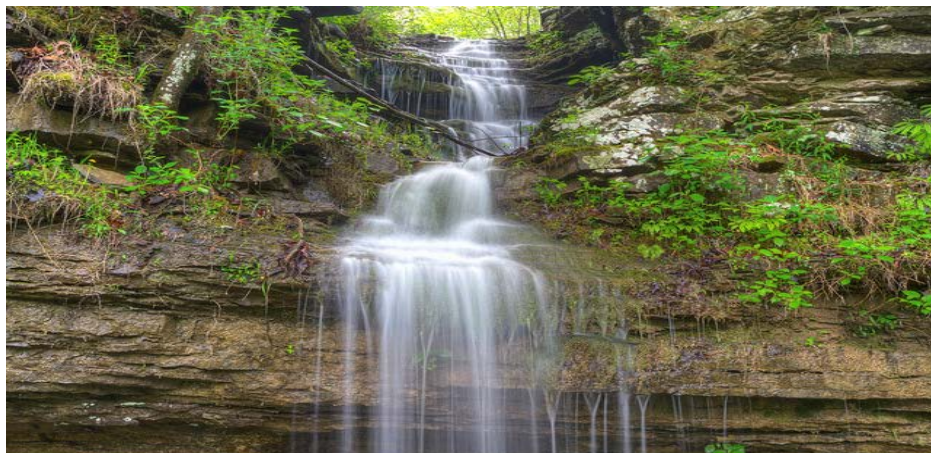


# STATE OF ARKANSAS

## CLEAN WATER REVOLVING LOAN FUND PROGRAM

### STATE FISCAL YEAR 2018

*(Amended Nov 2017, Submitted to EPA 11/27/2017)*



# Table of Contents

Introduction .....	3
WRRDA Amendments .....	3
CWRLF Goals.....	4
Short-Term Goals:.....	4
Long Term Goals: .....	4
Priority List and System.....	4
Fundable List of Projects .....	5
Bypass Procedures .....	5
Type of Communities Served and Financial Assistance Needed .....	5
Lending Rates and Loan Terms .....	6
Agriculture Water Quality Loans.....	6
Green Projects Reserve .....	6
Affordability Criteria/Additional Subsidization .....	7
Financial Management .....	7
State Matching Funds.....	7
Service Fee.....	8
Administrative Funding .....	8
Anticipated Cash Draw Ratio .....	8
Transfer of Funds.....	8
Sources and Uses .....	8
Financial Management Strategies .....	8
Assurances And Specific Proposals.....	9
Binding Commitments (35.3135(c)).....	9
Expeditious and Timely Expenditures (35.3135(d)).....	9
First Use of Funds (35.3135(e)).....	9
Environmental Review Requirements (35.3140).....	9
Federal Requirements.....	9
Architectural and Engineering (A/E) Contracts.....	10
Audits and Reporting .....	10
Cost And Effectiveness Analysis.....	10
Davis-Bacon Related Act Provision .....	10
Fiscal Sustainability Plan (FSP).....	10
Signage.....	11
Wage Rate Requirements (Davis-Bacon) .....	11
Intended Use Plan Amendment Procedures .....	11
Public Review & Comment .....	11
Cash Flow Diagram .....	12
APPENDIX A – Project Priority List .....	14
Project Ranking.....	15
Project Priority List.....	18
APPENDIX B - Charts .....	33
Chart 1 Binding Commitments .....	34
Chart 2 Fundable Project List .....	35
Chart 3 Statutory Limits.....	36
Chart 4 Sources and Uses of Funds .....	37

## **Introduction**

The State of Arkansas submits the Clean Water Revolving Loan Fund (CWRLF) Intended Use Plan (IUP) for State Fiscal Year 2018. The CWRLF is administered by the Water Resources Development Division (Division) of the Arkansas Natural Resources Commission (ANRC). This IUP was prepared by the Division. The Arkansas Development Finance Authority (ADFA) assists ANRC by acting as Agent, Financial Advisor and the Purchaser and Seller of Bonds.

This IUP contains a list of projects the State anticipates funding and information on how the State plans to use the funds carried over from the 2016 Clean Water grant, and the funds from the 2017 Clean Water grant/allotment, the funds the State will provide as match, and the funds the State receives from the repayment of loans previously made from the CWRLF program after allowance is made for debt service on outstanding bonds issued to fund the Program. We estimate that over \$137 million will be available to provide assistance during SFY 2018. A sources and uses of funds schedule is detailed in [Chart 4](#). Arkansas uses the all project method.

The CWRLF program anticipates disbursing over \$30 million to projects in SFY 2018. All projects are designed to help those areas ensure public health protection and compliance with the Clean Water Act (CWA).

In accordance with 2 CFR 200.328 and 40 CFR 35.3165 the Division agrees to provide in its Annual Report information regarding key project characteristics, milestones, and environmental/public health protection results in the following areas: 1) achievement of the outcomes established in the Intended Use Plan, 2) the reasons for delays if any, 3) environmental results, 4) compliance with Green Project Reserve, and 5) compliance with Additional Subsidization. Arkansas will summarize variations/changes from the IUP that occur during the SFY 18 in our Annual Report.

All projects for Arkansas comply with the federal requirements and equivalency will not be used.

Throughout this document Arkansas references loans however Arkansas actually purchases a bond from our borrower there forth any loan references means bond purchases.

## **WRRDA Amendments**

The Water Resources Reform and Development Act of 2014(WRRDA) was signed into law on June 10, 2014. Among its provisions are amendments to Titles I, II, V, and VI of the Federal Water Pollution Control Act (FWPCA). Throughout this IUP the WRRDA amendments will be incorporated.

In accordance with the amendments in the Water Resources Reform and Development Act to Titles I, II, V, and VI of the Federal Water Pollution Control Act, ANRC can now offer financing terms up to 30 years as long as this does not exceed the useful life of the project.

## **CWRLF Goals**

Arkansas is committed to support the three major objectives found in Title VI, and has established its short and long term goals accordingly. Those objectives and our goals are set forth below.

Objectives are to hasten wastewater treatment facility construction in order to meet the enforceable requirements of the CWA;

- Emphasize nonpoint source pollution control and the protection of estuaries,
- Facilitate the establishment of permanent institutions in each State that would provide continuing sources of financing needed to maintain water quality.

### **Short-Term Goals:**

1. The Division agrees to comply with all requests for data related to the use of the funds for Clean Water as EPA specifies for the Clean Water Project Benefits Reporting database and the Federal Funding Accountability and Transparency Act (FFATA) Requirement.
2. The Division will promote the RLF program at various conferences and conventions during SFY 2018.
3. The Division will submit the Intended Use Plan in order to apply for the federal cap grant within the first year that funds are appropriated.
4. Arkansas anticipates entering into seven (7) binding commitments for a total of \$67,825,000. The projects are identified in [Chart 1](#).
5. Arkansas anticipates three (3) projects that will meet the add sub requirements. The projects are identified in [Chart 1](#).
6. Arkansas anticipates at least one (1) project that includes components that meet green project reserve requirements. The projects are identified in [Chart 1](#).
7. The program is considering a contract with Northbridge to help with marketing and streamlining the processes for both CWRLF and DWSRF.

### **Long Term Goals:**

1. Achieve statewide compliance with Federal and State water quality standards by providing both traditional, low interest rate loans and innovative assistance to make affordable wastewater treatment projects and other eligible environmental improvements available to Arkansas communities and other qualified recipients.
2. Progress toward achievement of our long-term water quality compliance goal by achieving initiation of operation on projects in a timely manner.
3. Maintain the purchasing power of the CWRLF into perpetuity through sound and effective administration and fiscal management.

## **Priority List and System**

The available funds will be allocated in accordance with the current priority system by priority ranking, ability of the community to enter into a binding commitment and ability to proceed. The priority list is in [Appendix A](#), note that Arkansas may use any project(s) found in the priority list.

All projects scheduled for funding with Arkansas' CWRLF have been reviewed for consistency with appropriate plans developed and approved under Sections 205(j), 208, 303(e), 319 and 320 of the Clean Water Act, as amended. Evidence of this review and finding of consistency is documented in each

CWRLF project file.

Cross-cutter equivalency standards are applied to each Section 212 project. Each project will be subject to a technical review sufficient to determine compliance with equivalency requirements. The status of the National Municipal Policy (NMP) projects in this Intended Use Plan will not be affected by the work contemplated. All of the Section 212 projects listed on the NMP List have been:

- (a) Previously funded, or
- (b) In compliance, or
- (c) On an enforcement schedule, or
- (d) Have an enforcement action filed

The Division works with the NPDES Enforcement Section of the Water Division of the Arkansas Department of Environmental Quality to implement long-term goals (see Long-Term Goals No. 1 and 2).

The current Priority System and List quantifies relative water quality and/or public health importance of individual projects and adds an extra 5,000 points for those cities with executed Memoranda of Agreement (MOA). Communities that have met with the Division and have indicated they will enter the program but have not executed an MOA will have 2,500 points added to their score.

### **Fundable List of Projects**

A fundable list of projects is available in Chart 2, this is a list of projects submitted to ANRC for possible funding from the Clean Water RLF program. The list will be updated from time to time as provided for in Title XVI of the ANRC. Projects will be removed from the list when they receive funding commitment(s) for their project from any source(s) or when they request their project be removed. Funding commitment for the Clean Water RLF program will mean an executed Bond Purchase Agreement (Binding Commitment).

### **Bypass Procedures**

If a project's readiness to precede status changes after it was placed on the Fundable List, the Division reserves the right to put the project on hold and take another project from the Priority List that is ready to proceed in its place. If a project is not ready to proceed, the Division will substitute the next project on the priority list that is ready to proceed. Arkansas defines ready to proceed as an entity being ready to loan close within the specified timeframe of this Intended Use Plan. Arkansas' intention is to fund every project on the Priority List as it becomes ready to proceed.

### **Type of Communities Served and Financial Assistance Needed**

In accordance with the FFY 2016, FFY 2017 capitalization grants and P.L. 111-88, Arkansas provides additional subsidization in the form of principal forgiveness.

Due to the abundance of loan repayments and ANRC's access to the municipal bond market, financing or refinancing is available for both large and small communities. Arkansas anticipates closing five (5) loans to a community with populations of less than 5,000 during SFY 2018.

## **Lending Rates and Loan Terms**

The Lending Rate is composed of two parts: the interest rate and the servicing fee. The initial objective for ANRC is to establish a Lending Rate for CWRLF loans at 80% of the current bond market's taxable or tax-exempt rate depending on whether the project qualifies for a taxable or tax-exempt rate.

The Lending Rate will be determined at the time the Borrower is developing the Bond Purchase Agreement and the Bond Ordinance. The Lending Rate is determined using a formula that starts with a published list of daily market interest rates for a series of maturity dates for General Obligation Bonds. Those rates are modified to take into account the fact that the CWRLF is a Revenue Bond program and then the series is converted to an average weighted value. That single rate is then multiplied by 80% to get the Lending Rate. The servicing fee is currently set at 1.0%, and interest rate is the difference between the Lending Rate and the servicing fee. The servicing fee is the same for all projects, so the interest rate changes as the lending rate changes. Arkansas varies the lending rate in this manner to encourage repayment of the loans as quickly as possible in order for the CWRLF program to fund other projects. The 1% service fee is placed into an account which is outside the CWRLF fund.

Effective January 1, 2015, the Lending Rate was 1.5% for a ten year repayment period, 2.50% for a 20 year repayment period, and 3.0% for a thirty year repayment period.

## **Agriculture Water Quality Loans**

Arkansas has made available \$25 million for a linked deposit program in financial institutions throughout the state and one in south-east Missouri. Rural landowners are able to obtain below market interest rate loans to implement nonpoint source pollution control activities. ANRC has no plans to increase the \$25 million; however we do reserve the right to make modifications. The Agriculture Water Quality Loan Program revolves like the SRF program with new loans processed from repayments. The financing terms for the Agriculture Water Quality Loan Program are 3%.

## **Green Projects Reserve**

To date Arkansas has allocated \$13.4 million to projects or components of project that meet green requirements, meeting or exceeding required green amounts for the 2010 through the 2017 cap grants. The green project(s) expected to be allocated to the 2017 cap grant are estimated to meet or exceed the requirement, see [Chart 3](#).

The applicant must be a POTW and the project must demonstrate that it will be a public entity and the project must demonstrate that it will facilitate compliance with Clean Water Act. Projects eligible for Green Project Reserve will be in one of the following categories:

- Energy Efficiency
- Water Efficiency
- Green Infrastructure
- Environmentally Innovative

## **Affordability Criteria/Additional Subsidization**

The FWPCA section 603(i)(2) requires States to develop affordability criteria that will assist them in identifying applicants that would have difficulty financing projects without additional subsidization. Arkansas provides additional subsidization in the form of Principal Forgiveness.

ANRC has developed the following affordability criteria to determine if a project is eligible for additional subsidization funds for the CWRLF:

1. The current utility rates or proposed utility rates for 4,000 gallons of water on an annual basis are at least 1.5% of the Median Household Income (MHI) for the project area; or
2. If 51% of the customers who benefit from a project are either Low or Moderate Income as defined by the U. S. Department of Housing and Urban Developments' Community Block Grant (CDBG) Program then the ratio used drops to 1.25% of the Median Household Income (MHI) for the project area.
3. If the Population trend (2010 census compared to 1990 census) has declined at least 20% (the 2010 population is at least 20% lower than the 1990 population) then the ratio used drops to 1.25% of the MHI for the project area.
4. If the Unemployment figures (average of last three 5-year ACS numbers) are 250% higher than the State's unemployment figures then the ratio used drops to 1.25% of the MHI for the project area.

Once a project has been determined to be eligible for additional subsidization from the CWRLF, additional priority will be given to projects that meet the Green standards set by ANRC. ANRC has allocated a total of \$9,162,636 for projects or project components eligible for additional subsidization, of which \$5,062,636 had a closing date on or before June 30, 2017. See [Chart 2](#) for the additional subsidization estimated for projects expected to close in SFY2018.

## **Financial Management**

### **State Matching Funds**

Arkansas will expense all State Match for a Cap Grant before requesting federal funds. This is because Arkansas is prohibited from disbursing State Match in any of the forms used for Additional Subsidization. As long as federal funds are required to be spent on Additional Subsidization, Arkansas will need to disburse State Match first before requesting federal cap grant funds. The State of Arkansas will fund the required State Match by using State appropriations, grants from State funding programs, bond proceeds, or servicing fees.

Arkansas has deposited and disbursed all required state match for the 2016 and 2017 cap grants as of October 26, 2017.



### **Service Fee**

The service fee is the same for all projects which is one percent. The service fees are deposited into the Administrative account which is outside the CWRLF and not subject to the four percent administration cap applicable to the CWRLF. Arkansas anticipates collecting over \$1 million in service fees for SFY 2018. The disbursements for service fees are projected to be over \$1 million in SFY18. Approximately \$7 million in service fees are expected to be available in SFY 2018. The service fee will be used for items such as travel, supplies, possible system software purchase, contracts, state match, salary, and fringe.

### **Administrative Funding**

The Division intends to use an amount equal to four percent of estimated FFY 2017 cap grant allotment ( $\$8,661,000 \times 4\% = \$346,440$ ) funds for payment of administrative expenses, and any additional administrative costs will be paid from the Service Fees account. The administrative funds will be used for the budgeted categories of travel, supplies, salary, fringe, contracts, and indirect cost.

### **Anticipated Cash Draw Ratio**

Arkansas will disburse 100% of the state match for a capitalization grant first and then draw 100% of the Federal funds for that capitalization grant, (less awarded set-asides). Arkansas is prohibited from disbursing State Match in any of the forms used for Additional Subsidization. As long as federal funds are required to be spent on Additional Subsidization, A.C.A. § 15-5-901(b)(12)(B), Arkansas will continue this process for future federal cap grants.

### **Transfer of Funds**

Arkansas is reserving the authority to transfer up to thirty three percent (33%) of the DWSRF 2017 federal capitalization grant to the 2017 CWRLF grant. These funds will be transferred from Drinking Water construction to Clean Water construction. Currently, Arkansas has no plans to transfer funds for state fiscal year 2018.

### **Sources and Uses**

Arkansas' total funding sources for the CWRLF for SFY 2018 are identified in [Chart 4](#). With the capitalization grants for FFY 2016 and FFY 2017, the required State Match for those capitalization grants, bond proceeds, interest earnings, fees collected, and loan repayments, Arkansas will have over \$137 million available during SFY 2018 for existing projects and future eligible program purposes.

Arkansas' EPA payment schedule is based on the State's projection of binding commitments for selected projects included in [Chart 1](#) of this IUP. Arkansas has requested that the 2017 cap grant be allocated in one lump sum payment in the first quarter of FFY 2018.

### **Financial Management Strategies**

Arkansas leverages periodically to increase the funds available for assistance. Arkansas has no plans to leverage the Clean Water program in State Fiscal Year 2018.



## **Assurances and Specific Proposals**

Arkansas provides the necessary assurances and certifications as part of the Operating Agreement between the State of Arkansas and the U.S. Environmental Protection Agency. Arkansas' Operating Agreement includes the following requirements of section 35.3150 (b) (4).

### **Binding Commitments (35.3135(c))**

A binding commitment is defined as the execution of a contract called the Bond Purchase Agreement between the borrower and ANRC. The Bond Purchase Agreement sets out the terms of the bond that will be issued by the borrower and purchased by ADFA. The binding commitment date is the date when both parties have signed that contract. The bond closing will take place within six months of the execution of the Bond Purchase Agreement.

The State of Arkansas will enter into binding commitments for 120% of each payment within one year of receipt of that payment, see [Chart 1](#).

### **Expeditious and Timely Expenditures (35.3135(d))**

The State of Arkansas will expend all funds in the CWRLF in a timely and expeditious manner. Federal EPA payments and the associated State Match shall be expended within sixteen (16) quarters from scheduled payment dates. The bond proceeds shall be expended within three years from the bond issue dates.

### **First Use of Funds (35.3135(e))**

The State of Arkansas confirms that any publicly owned treatment works previously identified as part of the National Municipal Policy (NMP) universe are either in compliance, on an enforcement schedule, has an enforcement action filed, or has a funding commitment from a prior year.

### **Environmental Review Requirements (35.3140)**

The State of Arkansas will conduct environmental reviews as specified in the Project Review Procedures of the Operating Agreement. To date, none of the projects that have gone through the CWRLF program have required an Environmental Impact Statement. The projects were either issued a Finding of No Significant Impact or a Categorical Exclusion.

## **Federal Requirements**

Arkansas will be in compliance with the following federal requirements:

- American Iron and Steel
- Disadvantaged Business Enterprise compliance (DBE)
- Federal Environmental crosscutters
- Federal Funding Accountability and Transparency ACT (FFATA) reporting
- Single Audit Act (OMB A-133)
- Architectural and Engineering Contracts (A/E)

## **Architectural and Engineering (A/E) Contracts**

Arkansas' Governor has certified that Subchapter 8 of Chapter 11 of Title 19 Arkansas Professional Services Procurement Law is equivalent to Chapter 11 of Title 40, United States Code for Selection of Architectural and Engineering Services under the Clean Water Revolving Loan Fund.

## **Audits and Reporting**

Arkansas' Intended Use Plans and Annual Reports will be posted on our website:  
<http://anrc.ark.org/divisions/water-resources-development/>

An independent audit, and single audit (as required), will be conducted by an outside Certified Public Accounting firm annually.

Project milestones and information are reported through EPA's Clean Water Project & Benefits Reporting System (CBR), the Federal Funding Accountability and Transparency Act (FFATA) Requirement, as well as The National Incident Management System (NIMS). These databases will be updated no less than quarterly. However, the goal is to update monthly.

## **Cost and Effectiveness Analysis**

As part of the technical review and selection of alternatives, projects are reviewed for cost and effectiveness. The cost and effectiveness analysis includes a present worth analysis of the total project cost, associated operations and maintenance cost, and the cost of replacing the project or activity, for all the alternatives considered. The analysis also evaluates the cost and effectiveness of the processes, materials, techniques, and technologies. Non-cost factors are also considered in the analysis including, to the extent practicable, that the project maximizes the potential for efficient water use, reuse, recapture and conservation, energy conservation, green infrastructure, and sustainable design.

## **Davis-Bacon Related Act Provision**

The FWPCA section 602(b) (6) permanently applies the prevailing wage (Davis-Bacon) provision of the FWPCA section 513 to any projects for treatment works that are funded by a CWRLF. Consistent with EPA's prior implementation of this provision, application of the Davis- Bacon Act requirements extend not only to assistance agreements funded with capitalization grants, but to all CWRLF-funded projects involving the construction of treatment works regardless of the source of the funding (e.g., prior years' appropriations, state match, bond proceeds, interest earnings, principal repayments, etc.). Any project that is considered a "treatment work" as defined in the FWPCA section 212, now incorporated in FWPCA Section 502(26), must comply with the FWPCA 513, regardless of which eligibility it is funded under (*see section 603(c)*).

## **Fiscal Sustainability Plan (FSP)**

The FWPCA section 603(d) (1) (E) requires a recipient of a loan for a project that involves the repair, replacement, or expansion of a publicly owned treatment works to develop and implement an FSP. Since Arkansas does bond purchase agreements, we do not plan for our borrowers to implement an FSP. Arkansas defines an application as having all information needed to conduct an analysis of the project. Once the analysis is completed then the project is presented to our Commission for approval. After approval is received from our Commission Arkansas considers this to be a complete application. Arkansas does not consider the first submittal of an application form to be the application.

### **Signage**

Arkansas agrees to comply with the SRF Signage Guidance in order to enhance public awareness of EPA assistance agreements nationwide.

### **Wage Rate Requirements (Davis-Bacon)**

ANRC agrees to include in all agreements to provide assistance for the construction of treatment works carried out in whole or in part with such assistance made available by Arkansas Clean Water Revolving Loan Fund as authorized by title VI of the Federal Water Pollution Control Act (33 U.S.C. 1381 et seq.), or with such assistance made available under section 205(m) of that Act (33 U.S.C. 1285(m)), or both, a term and condition requiring compliance with the requirements of section 513 of that Act (33 U.S.C. 1372) in all procurement contracts and sub-grants, and require that loan recipients, procurement contractors and sub-grantees include such a term and condition in subcontracts and other lower tiered transactions. All contracts and subcontracts for the construction of treatment works carried out in whole or in part with assistance made available as stated herein shall insert in full in any contract in excess of \$2,000 the contract clauses “Wage Rate Requirements Under the Clean water Act, Section 513”. This term and condition applies to all agreements to provide assistance under the authorities referenced herein, whether in the form of a loan, bond purchase, grant, or any other vehicle to provide financing for a project, where such agreements are executed on or after October 2009. ANRC will continue to update this term and condition as updated procedures are provided with subsequent cap grants.

### **Intended Use Plan Amendment Procedures**

Revisions to this Intended Use Plan that are determined significant will require Public Notice and EPA notification and approval. Revisions to this Intended Use Plan which are deemed to be insignificant shall be made by the Division with notification to EPA. Any changes in the project funding list shall be in accordance with procedures provided in the Drinking Water State Revolving Fund Priority System and List.

Remainder of page intentionally left blank

## **Public Review & Comment**

To ensure that the public has an opportunity to review the State's proposed plans for the CWRLF, a draft IUP was published on the ANRC website (<http://www.anrc.arkansas.gov/divisions/water-resources-development>), to accept comments on the Intended Use Plan. To ensure that interested parties were made aware of the draft IUP and the comment period, ANRC posted notice on the ANRC web-site and published the public notice advertisement for the Drinking Water Intended Use Plan in the Arkansas Democrat-Gazette, a statewide paper, on Sunday, November 12th and 19th, 2017. The public comment period remained open with a deadline for submittal of written comments of November 24, 2017. Copies of the Intended Use Plan were also available, upon request, at the Water Resources Development Division of the Arkansas Natural Resources Commission. Arkansas received no comments on the Amended SFY 2018 IUP.

## **Cash Flow Diagram**

Starting with the Federal cap grant funds, 96% plus State Match are used to make loan disbursements to borrowers. The other 4% is used for paying administration expenses.

Monthly installments of semi-annual loan repayments, principal and interest, are held in the Pledged Receipts account or to the Revolving Loan Fund account depending upon whether or not the loan is leveraged. The 1% financing fee goes into the Admin Account.

When wastewater revenue bonds are issued, a portion of total proceeds goes into Debt Service Fund account. The remaining portion after expenses is net bond proceeds and goes into the Net Bond Proceeds account and disbursed to loan recipients.

All receipts are transferred from the Pledged Receipts account to the Revenue Fund semi-annually.

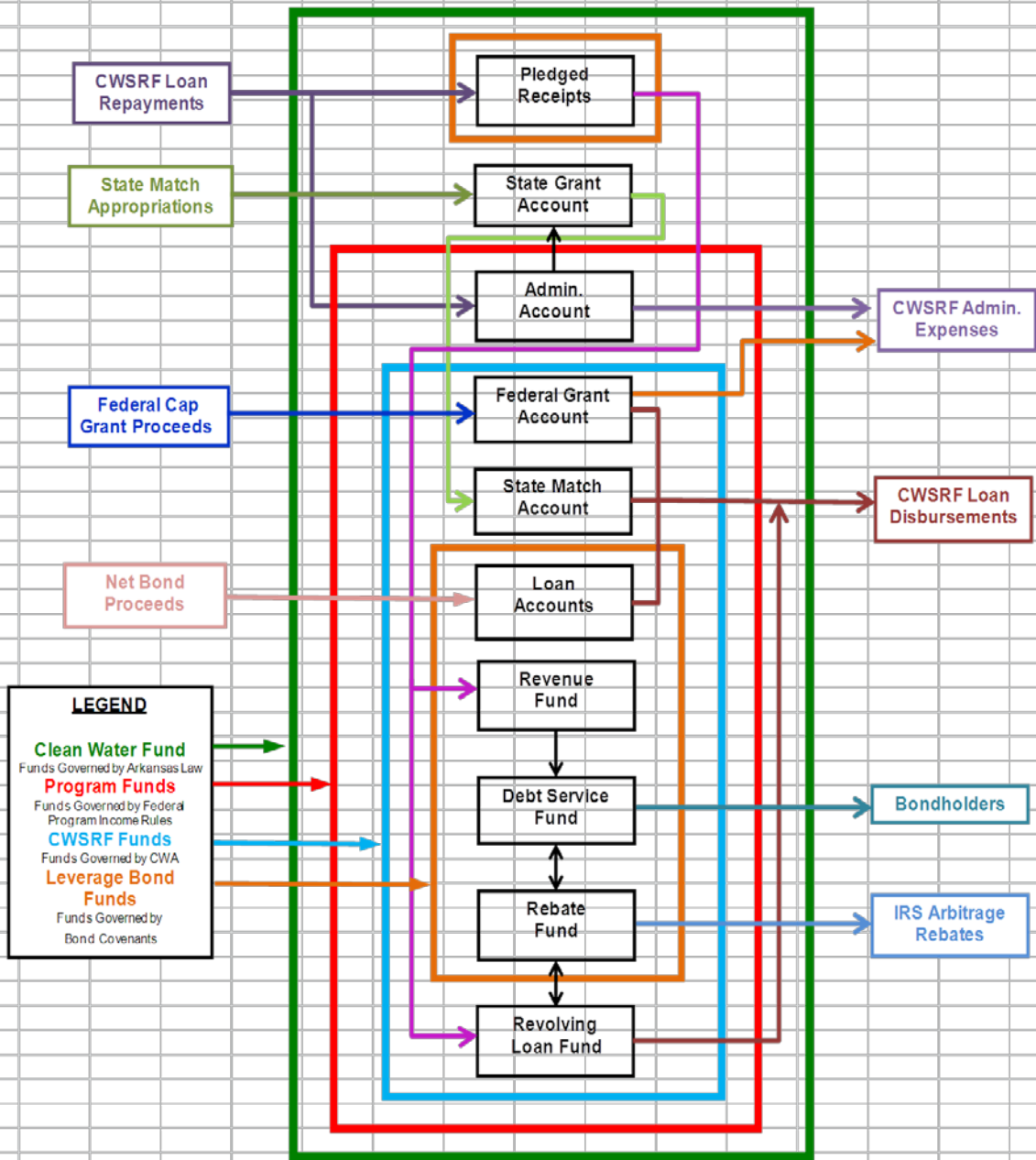
Revenue funds are transferred to the Debt Service Fund and from there, payments are made to wastewater revenue bondholders. Revenue funds not needed for debt service requirements are then transferred to the Revolving Loan Fund.

Funds from the Revolving Loan Fund are used to make qualified loans and for other eligible purposes.

Funds from the Admin account are used to pay administrative expenses such as travel, supplies, salary and fringe benefits, and State Match.

Remainder of page intentionally left blank

# CLEAN WATER FUND Cash Flow Diagram



# **APPENDIX A – Project Priority List**

## **Project Ranking**

The purpose of this system is to quantify the relative water quality and/or public health importance of individual entities located throughout the State. The Revolving Loan Fund (RLF) Priority System does not consider the type of project being considered or try to rank one type of project over another type. The RLF Priority System considers the following criteria to evaluate the relative merits of each entity:

- 1) Population
- 2) Segmented or Phased Projects
- 3) Receiving Stream Use Classification
- 4) Receiving Stream Flow
- 5) Enforcement Factor
- 6) NPDES Permit Compliance
- 7) Septic Tank Failure
- 8) Septic Tank Suitability
- 9) Executed Memorandum of Agreement

These factors are multiplied together (or added in the case of executed memorandum of agreement) to determine each entity's priority points.

### 1) Population

The population factor is determined by dividing an entity's 2000 census population by the population total for all entities in the priority system and multiplying by 1,000. If a 2000 census figure does not exist, the current population will be used.

### 2) Segmented or Phased Projects

All segmented or phased projects will be awarded a factor of 10.

### 3) Receiving Stream Use Classification

This factor is based upon the receiving stream classification in the Arkansas Water Quality Standards as contained in Regulation Number 2 (as amended) of October 28, 2002. The factors used are as follows:

Extraordinary Resource Waters-	8.00
Natural and Scenic Waterways-	8.00
Ecologically Sensitive Waterbodies	8.00
Trout Fishery	8.00
Primary Contact Recreation	4.00
Secondary Contact Recreation	2.00
No Discharge	1.00



The factor shall be awarded based upon the highest use classification of a given stream. Entities that discharge into another sewer system will use the classification of that sewer system's stream.

#### 4) Receiving Stream Flow

This factor is used as a quantitative indicator of receiving stream flow at seven day-ten year (7Q10) low flow conditions. The factors used are as follows:

0 cubic feet/second	8
Greater than 0, but less than 10 cubic feet/second	4
Greater than 10, but less than 100 cubic feet/second	2
Greater than 100 cubic feet/second	1

If an entity discharges into receiving waters in two different categories, the factor will be prorated based upon the quantity of each discharge and its receiving stream classification.

For unsewered entities, the largest stream within a one mile radius will be used in determining the stream classification. Entities that discharge into another sewer system will use the classification of that sewer system's stream.

#### 5) Enforcement Factor

Entities which have a sewer connection ban in effect pursuant to an order of the Commission on Pollution Control and Ecology and which require construction of facilities to meet the provisions of said order will be awarded a factor of 2000.

#### 6) NPDES Permit Compliance

Entities with permits that are currently expired or are under an enforceable compliance schedule will have a factor of 10.

#### 7) Septic Tank Failure

This factor is the percentage of septic tank failure as reported to the Department by the Arkansas Department of Health multiplied by 10. This factor applies only to unsewered entities.

#### 8) Septic Tank Suitability

The soil suitability for septic tank use within an entity is determined from soil survey information obtained from the Soil Conservation Service and uses their classification system for septic tank use. Soils well suited for septic tanks are classified as SLIGHT and given a point value of 1; MODERATE soils are those in which septic systems sometimes fail and are given a point value of 2; and SEVERE soils unsuitable for septic systems have a value of 3. The soils within a one mile radius of the unsewered entity are used in the rating. The classification with the highest percentage in this area will have its point value used in the priority system. This factor applies only to unsewered entities.

9) Executed Memorandum of Agreement

Entities with executed MOA's from the Division will have 5,000 points added to their score. Entities that have met with the Division and have indicated they will enter the program, but have not executed a MOA will have 2,500 points added to their score.

The ranking for all entities is presented by rank.

Remainder of page intentionally left blank.

## Project Priority List

No	Community Entity	County	Population Factor	Receiving Stream Class Factor	Receiving Stream Flow Factor	Septic Tank Failure Factor	Septic Tank Suitability Factor	Expired Permit Factor 10	Total Points
1	Benton city	Saline	10.520	8	4	0	0	1	5337
2	Little Rock city	Pulaski	66.370	4	1	0	0	0	5265
3	Bryant city	Saline	5.720	2	8	0	0	1	5092
4	Magnolia city	Columbia	3.970	4	4	0	0	1	5064
5	Dumas city	Desha	1.610	4	4	0	0	1	2526
6	West Fork city	Washington	0.790	4	8	0	0	1	2525
7	Lockesburg town	Sevier	0.250	4	4	0	0	1	2504
8	McNeil city	Columbia	0.180	2	8	0	0	1	2503
9	Wilmar city	Drew	0.180	2	8	0	0	1	2503
10	Washington County Property Owners Improvement District	Washington	0.260						2500
11	Fayetteville city	Washington	25.230	3	6	0	0	1	454
12	Bentonville city	Benton	12.110	8	4	0	0	1	388
13	Hot Springs city	Garland	12.070	4	8	0	0	1	386
14	Alexander town	Pulaski	0.990	2	8	8	3	1	380
15	Jonesboro city	Craighead	23.070	2	8	0	0	1	369
16	Conway city	Faulkner	20.200	2	8	0	0	1	323
17	Jacksonville city	Pulaski	9.730	4	8	0	0	1	311
18	Rogers city	Benton	19.190	4	4	0	0	1	307
19	Prairie Creek CDP	Benton	0.630	4	8	5	3	1	302
20	Parkers-Iron Spring CDP	Pulaski	1.200	2	8	5	3	1	288
21	Wooster town	Faulkner	0.290	4	8	9	3	1	251
22	Baxter Co WWFB	Baxter	7.790	8	4	1	1	1	249
23	Springdale city	Washington	23.940	2	4	0	0	1	192
24	Kibler city	Crawford	0.330	4	8	6	3	1	190
25	Bella Vista CDP	Benton	5.690	8	4	0	0	1	182
26	Faulkner Co PFB	Faulkner	1.470	4	2	5	3	1	176
27	Cave Springs city	Benton	0.590	8	4	3	3	1	170
28	East End CDP	Saline	1.930	2	8	5	1	1	154
29	Russellville city	Pope	9.580	2	8	0	0	1	153
30	Paragould city	Greene	8.960	4	4	0	0	1	143
31	Belleville city	Yell	0.150	4	8	9	3	1	135
32	Dyer town	Crawford	0.300	2	8	9	3	1	122
33	Fort Smith city	Sebastian	29.570	4	1	0	0	1	118
34	McAlmont CDP	Pulaski	0.660	4	8	5	1	1	106
35	Centerton city	Benton	3.260	8	4	0	0	1	104
36	Shirley town	Van Buren	0.100	8	8	5	3	1	104

No	Community Entity	County	Population Factor	Receiving Stream Class Factor	Receiving Stream Flow Factor	Septic Tank Failure Factor	Septic Tank Suitability Factor	Expired Permit Factor 10	Total Points
37	Blytheville city	Mississippi	5.360	3	6	0	0	1	103
38	Holland city	Faulkner	0.200	8	4	5	3	1	96
39	Humnoke city	Lonoke	0.100	4	8	10	3	1	95
40	Cedarville city	Crawford	0.390	2	8	5	3	1	94
41	Oxford city	Izard	0.230	8	8	3	2	1	88
42	North Little Rock	Pulaski	21.370	4	1	0	0	0	85
43	Forrest City	St. Francis	5.270	2	8	0	0	1	84
44	El Dorado city	Union	6.480	2	7	0	0	1	84
45	Siloam Springs city	Benton	5.160	2	8	0	0	1	83
46	Texarkana city	Miller	10.260	2	4	0	0	1	82
47	Poyen town	Grant	0.100	4	8	9	3	1	82
48	Wickes town	Polk	0.260	2	8	10	2	1	79
49	Salem CDP	Saline	0.960	4	4	5	1	1	77
50	Hartford city	Sebastian	0.220	4	8	4	3	1	74
51	Elkins city	Washington	0.910	4	8	3	1	1	73
52	Harrison city	Boone	4.440	4	4	0	0	1	71
53	Mountain Home city	Baxter	4.270	2	8	0	0	1	68
54	Marion city	Crittenden	4.230	4	4	0	0	1	68
55	Pine Bluff city	Jefferson	16.830	4	1	0	0	1	67
56	Searcy city	White	7.840	4	2	0	0	1	63
57	Damascus town	Faulkner	0.130	4	8	5	3	1	62
58	Grannis city	Polk	0.190	2	8	10	2	1	58
59	Tupelo town	Jackson	0.060	4	8	10	3	1	58
60	Guy town	Faulkner	0.240	2	8	5	3	1	58
61	Hope city	Hempstead	3.460	2	8	0	0	1	55
62	Walnut Ridge city	Lawrence	1.680	4	8	0	0	1	54
63	Caldwell town	St. Francis	0.190	2	8	9	2	1	54
64	Van Buren city	Crawford	7.820	4	2	0	0	1	53
65	Pea Ridge city	Benton	1.640	4	8	0	0	1	52
66	Greenbrier city	Faulkner	1.610	4	8	0	0	1	52
67	Fairfield Bay city	Van Buren	0.800	8	8	0	0	1	51
68	Cherokee Village city	Sharp	1.590	8	4	0	0	1	51
69	Ratcliff city	Logan	0.070	4	8	8	3	1	50
70	College City town	Lawrence	0.160	2	8	7	3	1	50
71	Greenwood city	Sebastian	3.070	4	4	0	0	1	49
72	Avoca town	Benton	0.170	4	8	3	3	1	49
73	Horseshoe Bend city	Izard	0.750	8	8	0	0	1	48
74	Oak Grove town	Carroll	0.130	2	8	8	3	1	47
75	Hot Springs Village CDP	Garland	2.880	2	8	0	0	1	46

No	Community Entity	County	Population Factor	Receiving Stream Class Factor	Receiving Stream Flow Factor	Septic Tank Failure Factor	Septic Tank Suitability Factor	Expired Permit Factor 10	Total Points
76	Bellefonte town	Boone	0.160	4	4	6	3	1	46
77	Enola town	Faulkner	0.120	2	8	8	3	1	46
78	Ward city	Lonoke	1.390	4	8	0	0	1	44
79	Sweet Home CDP	Pulaski	0.370	4	2	5	3	1	44
80	Piney CDP	Garland	1.370	4	8	0	0	1	44
81	Newport city	Jackson	2.700	4	4	0	0	1	43
82	Bonanza town	Sebastian	0.200	2	8	5	3	1	43
83	Hartman city	Johnson	0.180	4	8	3	3	1	43
84	Piggott city	Clay	1.320	4	8	0	0	1	42
85	Caulksville town	Logan	0.070	4	8	6	3	1	40
86	Lowell city	Benton	2.510	4	4	0	0	1	40
87	Beebe city	White	2.510	4	4	0	0	1	40
88	Heber Springs city	Cleburne	2.460	2	8	0	0	1	39
89	Jennette town	Crittenden	0.040	4	8	10	3	1	38
90	Lynn town	Lawrence	0.100	2	8	8	3	1	38
91	Briarcliff town	Baxter	0.080	4	8	5	3	1	38
92	Burchwood Bay SID	Garland	1.200	4	8	0	0	1	38
93	Hunter town	Woodruff	0.040	4	8	10	3	1	38
94	Allport town	Lonoke	0.040	4	8	10	3	1	38
95	Highway 270 West SID	Garland	1.180	4	8	0	0	1	38
96	Islands SID	Garland	1.180	4	8	0	0	1	38
97	Gum Springs town	Clark	0.040	4	8	10	3	1	38
98	Winslow city	Washington	0.130	2	8	6	3	1	37
99	Cove town	Polk	0.130	2	8	9	2	1	37
100	Farmington city	Washington	2.050	3	6	0	0	1	37
101	Mulberry city	Crawford	0.570	8	8	0	0	1	36
102	Bethel Heights town	Benton	0.810	3	6	3	1	1	36
103	West Memphis city	Crittenden	9.000	4	1	0	0	1	36
104	Evening Shade town	Sharp	0.150	8	4	3	3	1	36
105	Bergman town	Boone	0.150	2	8	5	3	1	36
106	Dell town	Mississippi	0.080	4	4	9	3	1	35
107	McNab town	Hempstead	0.020	8	8	9	3	1	35
108	Warren city	Bradley	2.060	8	2	0	0	1	33
109	Carpenter-Catherine SID	Garland	1.020	4	8	0	0	1	33
110	Bald Knob city	White	0.990	4	8	0	0	1	32
111	De Queen city	Sevier	1.980	2	8	0	0	1	32
112	Mena city	Polk	1.970	2	8	0	0	1	32
113	Alpena town	Boone	0.130	4	4	5	3	1	31
114	England city	Lonoke	0.970	4	8	0	0	1	31

No	Community Entity	County	Population Factor	Receiving Stream Class Factor	Receiving Stream Flow Factor	Septic Tank Failure Factor	Septic Tank Suitability Factor	Expired Permit Factor 10	Total Points
115	Pottsville town	Pope	0.970	4	8	0	0	1	31
116	Oden town	Little River	0.080	8	4	6	2	1	31
117	Branch city	Franklin	0.130	2	4	10	3	1	30
118	Crossett city	Ashley	1.890	2	8	0	0	1	30
119	Arkadelphia city	Clark	3.670	8	1	0	0	1	29
120	Garner town	White	0.100	4	8	9	1	1	29
121	Hector town	Pope	0.150	2	8	4	3	1	29
122	Traskwood town	Saline	0.180	2	8	10	1	1	29
123	Tontitown city	Washington	0.320	3	6	5	1	1	29
124	Greenland city	Washington	0.430	4	8	2	1	1	28
125	Highland city	Sharp	0.340	2	8	5	1	1	27
126	Bauxite town	Saline	0.170	2	8	10	1	1	27
127	Gateway town	Benton	0.140	4	8	2	3	1	27
128	Monticello city	Drew	3.250	2	4	0	0	1	26
129	Black Oak town	Craighead	0.090	2	8	6	3	1	26
130	Halley	Desha	0.030	4	8	9	3	1	26
131	Stuttgart city	Arkansas	3.200	2	4	0	0	1	26
132	Gibson CDP	Pulaski	1.600	2	8	0	0	1	26
133	Nashville city	Howard	1.590	4	4	0	0	1	25
134	Elm Springs city	Washington	0.530	2	4	2	3	1	25
135	Dermott city	Chicot	0.790	4	8	0	0	1	25
136	Coy town	Lonoke	0.030	4	8	9	3	1	24
137	Gurdon city	Clark	0.760	4	8	0	0	1	24
138	Woodson CDP	Pulaski	0.150	4	8	5	1	1	24
139	Prairie Grove city	Washington	1.500	4	4	0	0	1	24
140	Maumelle city	Pulaski	5.890	4	1	0	0	1	24
141	Fordyce city	Dallas	1.470	2	8	0	0	1	24
142	Lonoke city	Lonoke	1.460	4	4	0	0	1	23
143	Wrightsville city	Pulaski	0.730	4	8	0	0	1	23
144	Viola town	Fulton	0.120	4	8	2	3	1	23
145	Saratoga	Howard	0.030	4	8	8	3	1	23
146	Wynne city	Cross	2.870	2	4	0	0	1	23
147	Lake City town	Craighead	0.710	4	8	0	0	1	23
148	Austin city	Lonoke	0.700	4	8	0	0	1	22
149	Okolona town	Clark	0.050	2	8	9	3	1	22
150	Booneville city	Logan	1.370	2	8	0	0	1	22
151	Haskell city	Saline	1.370	2	8	0	0	1	22
152	Mammoth Spring city	Fulton	0.340	8	8	0	0	1	22
153	London city	Pope	0.360	4	1	5	3	1	22

No	Community Entity	County	Population Factor	Receiving Stream Class Factor	Receiving Stream Flow Factor	Septic Tank Failure Factor	Septic Tank Suitability Factor	Expired Permit Factor 10	Total Points
154	Vilonia town	Faulkner	1.310	2	8	0	0	1	21
155	Magnet Cove	Hot Spring	0.130	2	8	5	2	1	21
156	Banks town	Bradley	0.040	4	8	8	2	1	20
157	Sherwood city	Pulaski	10.120	1	2	0	0	1	20
158	Waldron city	Scott	1.240	2	8	0	0	1	20
159	North Crossett CDP	Ashley	1.230	2	8	0	0	1	20
160	Paris city	Logan	1.210	4	4	0	0	1	19
161	Strawberry town	Lawrence	0.100	2	4	8	3	1	19
162	Mount Vernon city	Faulkner	0.050	2	8	8	3	1	19
163	Reader town	Ouachita	0.030	8	4	7	3	1	19
164	Stamps city	Lafayette	0.580	4	8	0	0	1	19
165	Decatur city	Benton	0.580	4	8	0	0	1	19
166	Midland town	Sebastian	0.110	2	8	4	3	1	18
167	Johnson city	Washington	1.150	2	4	2	1	1	18
168	Beedeville town	Jackson	0.040	2	8	10	3	1	18
169	Prescott city	Nevada	1.130	2	8	0	0	1	18
170	De Witt city	Arkansas	1.130	4	4	0	0	1	18
171	Salem city	Fulton	0.560	8	4	0	0	1	18
172	Greers Ferry city	Cleburne	0.310	8	8	0	3	1	18
173	Gravel Ridge CDP	Pulaski	1.110	2	8	0	0	1	18
174	Lake Hamilton CDP	Garland	0.550	4	8	0	0	1	18
175	Brinkley city	Monroe	1.090	2	8	0	0	1	17
176	Sherrill town	Jefferson	0.030	4	8	9	2	1	17
177	Omaha town	Boone	0.060	2	8	6	3	1	17
178	Shannon Hills city	Saline	1.080	2	8	0	0	1	17
179	Camden city	Ouachita	4.180	4	1	0	0	1	17
180	Lakeview city	Baxter	0.260	8	8	0	0	1	17
181	Rockwell CDP	Garland	1.040	4	4	0	0	1	17
182	Osage Basin WWTD	Benton	0.510	8	4	0	0	1	16
183	Garfield town	Benton	0.170	2	8	2	3	1	16
184	Corinth town	Yell	0.020	4	8	9	3	1	16
185	Anthonyville town	Crittenden	0.060	2	8	6	3	1	16
186	Hughes city	St. Francis	0.490	4	8	0	0	1	16
187	Hamburg city	Ashley	0.980	4	4	0	0	1	16
188	Hoxie city	Lawrence	0.950	2	8	0	0	1	15
189	Green Forest city	Carroll	0.950	2	8	0	0	1	15
190	Winthrop city	Little River	0.070	8	1	9	3	1	15
191	Mountain View city	Stone	0.940	2	8	0	0	1	15
192	Dover city	Pope	0.470	4	8	0	0	1	15



No	Community Entity	County	Population Factor	Receiving Stream Class Factor	Receiving Stream Flow Factor	Septic Tank Failure Factor	Septic Tank Suitability Factor	Expired Permit Factor 10	Total Points
193	Goshen town	Washington	0.370	4	4	3	1	1	15
194	Imboden town	Lawrence	0.230	8	8	0	0	1	15
195	Berryville city	Carroll	1.840	2	4	0	0	1	15
196	Cleveland	Conway	0.030	2	8	10	3	1	14
197	Malvern city	Hot Spring	3.540	4	1	0	0	1	14
198	Lake Village city	Chicot	0.880	2	8	0	0	1	14
199	Batesville city	Independence	3.510	4	1	0	0	1	14
200	Knoxville city	Johnson	0.250	4	1	7	2	1	14
201	Charleston city	Franklin	0.860	2	8	0	0	1	14
202	Fargo town	Monroe	0.030	2	8	10	3	1	14
203	Danville city	Yell	0.830	4	4	0	0	1	13
204	Yellville city	Marion	0.410	4	8	0	0	1	13
205	Lake Catherine SID	Garland	0.410	4	8	0	0	1	13
206	Winchester city	Drew	0.060	2	4	9	3	1	13
207	Ozan city	Hempstead	0.030	2	8	9	3	1	13
208	West Point town	White	0.060	4	2	9	3	1	13
209	Huntsville city	Madison	0.800	2	8	0	0	1	13
210	Gravette city	Benton	0.800	2	8	0	0	1	13
211	Sheridan city	Grant	1.580	2	4	0	0	1	13
212	Lavaca city	Sebastian	0.790	2	8	0	0	1	13
213	Clarksville city	Johnson	3.150	4	1	0	0	1	13
214	Molly Creek SID	Garland	0.390	4	8	0	0	1	12
215	Harrisburg city	Poinsett	0.780	2	8	0	0	1	12
216	Lincoln city	Washington	0.770	2	8	0	0	1	12
217	Mayflower city	Faulkner	0.770	2	8	0	0	1	12
218	Smithville town	Lawrence	0.030	4	4	9	3	1	12
219	Carlisle city	Lonoke	0.760	4	4	0	0	1	12
220	Glenwood city	Pike	0.760	8	2	0	0	1	12
221	West Helena city	Phillips	2.980	4	1	0	0	1	12
222	McGehee city	Desha	1.450	2	4	0	0	1	12
223	St. Paul town	Madison	0.060	4	8	6	1	1	12
224	Eureka Springs city	Carroll	0.710	2	8	0	0	1	11
225	Gassville city	Baxter	0.710	2	8	0	0	1	11
226	Marianna city	Lee	1.410	4	2	0	0	1	11
227	Fountain Lake town	Garland	0.140	8	2	5	1	1	11
228	Holiday Island SID	Carroll	0.690	2	8	0	0	1	11
229	Leachville city	Mississippi	0.680	2	8	0	0	1	11
230	Little Mazarn SID	Garland	0.340	4	8	0	0	1	11
231	Pleasant Hills SID	Garland	0.340	4	8	0	0	1	11

No	Community Entity	County	Population Factor	Receiving Stream Class Factor	Receiving Stream Flow Factor	Septic Tank Failure Factor	Septic Tank Suitability Factor	Expired Permit Factor 10	Total Points
232	Rose Bud town	White	0.170	8	8	1	1	1	11
233	Menifee town	Conway	0.100	4	1	9	3	1	11
234	Osceola city	Mississippi	2.660	4	1	0	0	1	11
235	Denning town	Franklin	0.110	4	8	1	3	1	11
236	Lepanto city	Poinsett	0.650	4	4	0	0	1	10
237	Rockport town	Hot Spring	0.260	4	1	5	2	1	10
238	Ravenden town	Lawrence	0.160	8	8	0	0	1	10
239	Smackover city	Union	0.640	4	4	0	0	1	10
240	East Camden town	Ouachita	0.320	4	8	0	0	1	10
241	Tuckerman city	Jackson	0.640	2	8	0	0	1	10
242	Zinc town	Boone	0.040	4	8	8	1	1	10
243	Stephens city	Ouachita	0.310	4	8	0	0	1	10
244	Bay city	Craighead	0.620	2	8	0	0	1	10
245	Trumann city	Poinsett	2.480	4	1	0	0	1	10
246	Gosnell city	Mississippi	1.220	2	4	0	0	1	10
247	Blue Mountain town	Logan	0.040	2	8	5	3	1	10
248	Smale	Monroe	0.020	2	8	10	3	1	10
249	Highfill town	Benton	0.200	2	8	1	3	1	10
250	Manila city	Mississippi	1.150	2	4	0	0	1	9
251	Lonsdale town	Garland	0.030	8	4	10	1	1	9
252	Kensett city	White	0.570	2	8	0	0	1	9
253	West Crossett CDP	Ashley	0.570	2	8	0	0	1	9
254	Pocahontas city	Randolph	2.270	4	1	0	0	1	9
255	Murfreesboro city	Pike	0.560	4	4	0	0	1	9
256	Brookland town	Craighead	0.560	2	8	0	0	1	9
257	Lamar city	Johnson	0.550	2	8	0	0	1	9
258	Twin Groves town	Faulkner	0.110	2	4	10	1	1	9
259	Helena city	Phillips	2.170	4	1	0	0	1	9
260	Beaver town	Carroll	0.030	8	8	5	1	1	9
261	Datto town	Clay	0.030	2	8	9	2	1	9
262	Diamond City city	Boone	0.270	4	8	0	0	1	9
263	Kelso	Desha	0.010	4	8	9	3	1	9
264	Scranton city	Logan	0.080	4	1	9	3	1	9
265	Adona town	Perry	0.070	2	8	3	3	1	8
266	Bradford city	White	0.260	4	8	0	0	1	8
267	Mountain Pine city	Garland	0.260	8	4	0	0	1	8
268	Monette city	Craighead	0.510	2	8	0	0	1	8
269	Cabot city	Lonoke	8.150	1	1	0	0	1	8
270	Chidester city	Ouachita	0.100	2	4	10	1	1	8

No	Community Entity	County	Population Factor	Receiving Stream Class Factor	Receiving Stream Flow Factor	Septic Tank Failure Factor	Septic Tank Suitability Factor	Expired Permit Factor 10	Total Points
271	Hazen city	Prairie	0.500	2	8	0	0	1	8
272	Perryville city	Perry	0.500	4	4	0	0	1	8
273	Jacksonport town	Jackson	0.070	4	1	9	3	1	8
274	Antoine town	Pike	0.040	4	4	4	3	1	8
275	Tinsman city	Calhoun	0.020	2	8	8	3	1	8
276	White Hall city	Jefferson	1.900	4	1	0	0	1	8
277	Waldo city	Columbia	0.470	2	8	0	0	1	8
278	Alma city	Crawford	1.860	4	1	0	0	1	7
279	Flippin city	Marion	0.460	2	8	0	0	1	7
280	Marshall city	Searcy	0.460	2	8	0	0	1	7
281	Rison city	Cleveland	0.460	2	8	0	0	1	7
282	Hampton city	Calhoun	0.450	4	4	0	0	1	7
283	Dalark	Dallas	0.030	2	8	5	3	1	7
284	McCaskill city	Hempstead	0.030	2	8	5	3	1	7
285	Central City town	Sebastian	0.170	4	1	4	3	1	7
286	Little Flock city	Benton	0.890	4	4	1	1	1	7
287	Marked Tree city	Poinsett	0.880	4	2	0	0	1	7
288	Huntington city	Sebastian	0.220	4	8	0	0	1	7
289	Mountainburg city	Crawford	0.220	4	8	0	0	1	7
290	Caraway town	Craighead	0.440	2	8	0	0	1	7
291	Ola city	Yell	0.440	2	8	0	0	1	7
292	Atkins city	Pope	1.030	4	2	0	0	1	7
293	Earle city	Crittenden	0.830	4	2	0	0	1	7
294	Horseshoe Lake town	Crittenden	0.100	4	1	6	3	1	7
295	Marvell city	Phillips	0.410	4	4	0	0	1	7
296	Mineral Springs city	Howard	0.410	2	8	0	0	1	7
297	Dardanelle city	Yell	1.630	4	1	0	0	1	7
298	Ashdown city	Little River	1.620	4	1	0	0	1	6
299	Success town	Clay	0.050	4	2	8	2	1	6
300	Newark city	Independence	0.400	2	8	0	0	1	6
301	Subiaco town	Logan	0.200	4	8	0	0	1	6
302	Barling city	Sebastian	1.590	4	1	0	0	1	6
303	Eudora city	Chicot	0.780	4	2	0	0	1	6
304	Dierks city	Howard	0.390	4	4	0	0	1	6
305	Star City city	Lincoln	0.780	2	4	0	0	1	6
306	Mansfield city	Sebastian	0.390	2	8	0	0	1	6
307	Humphrey city	Jefferson	0.190	4	8	0	0	1	6
308	Marmaduke city	Greene	0.380	4	4	0	0	1	6
309	Mount Ida city	Montgomery	0.370	2	8	0	0	1	6

No	Community Entity	County	Population Factor	Receiving Stream Class Factor	Receiving Stream Flow Factor	Septic Tank Failure Factor	Septic Tank Suitability Factor	Expired Permit Factor 10	Total Points
310	Bono city	Craighead	0.730	2	4	0	0	1	6
311	Lead Hill town	Boone	0.090	8	8	0	0	1	6
312	Horatio city	Sevier	0.360	2	8	0	0	1	6
313	Judsonia city	White	0.690	4	2	0	0	1	6
314	Alzheimer city	Jefferson	0.340	2	8	0	0	1	5
315	Rector city	Clay	0.680	2	4	0	0	1	5
316	Bull Shoals city	Marion	0.670	8	1	0	0	1	5
317	Bearden city	Ouachita	0.330	2	8	0	0	1	5
318	Cotter city	Baxter	0.330	2	8	0	0	1	5
319	Cave City city	Sharp	0.650	2	4	0	0	1	5
320	Crawfordsville town	Crittenden	0.160	4	8	0	0	1	5
321	Jasper city	Newton	0.160	8	4	0	0	1	5
322	Reyno town	Randolph	0.160	4	8	0	0	1	5
323	Lafe town	Greene	0.160	4	8	0	0	1	5
324	Ozark city	Franklin	1.260	4	1	0	0	1	5
325	Melbourne city	Izard	0.630	2	4	0	0	1	5
326	Moorefield town	Independence	0.050	4	8	1	3	1	5
327	Collins	Drew	0.010	4	8	5	3	1	5
328	Ladelle	Drew	0.010	4	8	5	3	1	5
329	Chester town	Crawford	0.050	4	8	1	3	1	5
330	Sparkman city	Dallas	0.150	4	8	0	0	1	5
331	Casa town	Perry	0.060	4	8	3	1	1	5
332	Leslie city	Searcy	0.150	8	4	0	0	1	5
333	Oak Grove Heights	Greene	0.300	4	4	0	0	1	5
334	McCrary city	Woodruff	0.590	4	2	0	0	1	5
335	Friendship town	Hot Spring	0.060	4	1	7	3	1	5
336	Gould city	Lincoln	0.290	2	8	0	0	1	5
337	Corning city	Clay	1.160	4	1	0	0	1	5
338	Magazine city	Logan	0.290	2	8	0	0	1	5
339	Hermitage town	Bradley	0.280	2	8	0	0	1	4
340	Hackett city	Sebastian	0.280	2	8	0	0	1	4
341	Perla town	Hot Spring	0.080	2	4	7	1	1	4
342	Weldon town	Jackson	0.030	2	8	9	1	1	4
343	Swifton city	Jackson	0.270	2	8	0	0	1	4
344	Rosston town	Nevada	0.090	2	8	3	1	1	4
345	Wildwood PFB	Union	0.270	2	8	0	0	1	4
346	Umpire	Howard	0.030	2	8	3	3	1	4
347	Whelen Springs town	Clark	0.030	8	2	9	1	1	4
348	Letona town	White	0.090	2	8	1	3	1	4

No	Community Entity	County	Population Factor	Receiving Stream Class Factor	Receiving Stream Flow Factor	Septic Tank Failure Factor	Septic Tank Suitability Factor	Expired Permit Factor 10	Total Points
349	Calico Rock city	Izard	0.530	8	1	0	0	1	4
350	Norman town	Montgomery	0.130	8	4	0	0	1	4
351	Wilton town	Little River	0.130	4	8	0	0	1	4
352	Keiser city	Mississippi	0.260	4	4	0	0	1	4
353	Western Grove town	Newton	0.130	2	8	1	2	1	4
354	Quitman city	Cleburne	0.260	2	8	0	0	1	4
355	Cushman town	Independence	0.160	4	4	1	2	1	4
356	Gillham Lake RWA	Sevier	0.510	2	4	0	0	1	4
357	Pleasant Plains town	Independence	0.120	2	8	1	3	1	4
358	Willisville town	Nevada	0.050	2	8	5	1	1	4
359	Everton town	Boone	0.050	4	4	5	1	1	4
360	Hensley CDP	Pulaski	0.050	4	4	5	1	1	4
361	Amity city	Clark	0.250	4	4	0	0	1	4
362	Ben Lomond town	Sevier	0.050	2	8	5	1	1	4
363	Vandervoort town	Polk	0.030	2	8	8	1	1	4
364	Gillett city	Arkansas	0.240	2	8	0	0	1	4
365	Brickeys	Lee	0.020	8	1	8	3	1	4
366	Patmos town	Hempstead	0.020	2	8	4	3	1	4
367	Powhatan town	Lawrence	0.020	8	1	8	3	1	4
368	Palestine city	St. Francis	0.230	2	8	0	0	1	4
369	McRae city	White	0.230	2	8	0	0	1	4
370	Cotton Plant city	Woodruff	0.220	2	8	0	0	1	4
371	Cherry Valley city	Cross	0.220	2	8	0	0	1	4
372	Bradley city	Lafayette	0.220	2	8	0	0	1	4
373	Holly Grove city	Monroe	0.210	4	4	0	0	1	3
374	Pangburn city	White	0.210	8	2	0	0	1	3
375	Higginson town	White	0.210	2	8	0	0	1	3
376	Huttig city	Union	0.200	2	8	0	0	1	3
377	Junction City city	Union	0.200	4	4	0	0	1	3
378	Bodcaw town	Nevada	0.050	4	8	2	1	1	3
379	Pleasant Oaks SID	Saline	0.050	8	8	0	0	1	3
380	Big Flat town	Baxter	0.040	2	8	5	1	1	3
381	Joiner city	Mississippi	0.200	4	4	0	0	1	3
382	Wilmot city	Ashley	0.190	2	8	0	0	1	3
383	Strong city	Union	0.190	4	4	0	0	1	3
384	Taylor city	Columbia	0.190	2	8	0	0	1	3
385	Augusta city	Woodruff	0.750	4	1	0	0	1	3
386	Ash Flat city	Sharp	0.370	2	4	0	0	1	3
387	Buckner city	Lafayette	0.090	2	8	2	1	1	3

No	Community Entity	County	Population Factor	Receiving Stream Class Factor	Receiving Stream Flow Factor	Septic Tank Failure Factor	Septic Tank Suitability Factor	Expired Permit Factor 10	Total Points
388	Lake View city	Phillips	0.180	2	8	0	0	1	3
389	Emmet city	Nevada	0.180	4	4	0	0	1	3
390	Center Point	Howard	0.030	2	8	2	3	1	3
391	Keo town	Lonoke	0.090	4	8	0	0	1	3
392	Springtown town	Benton	0.040	2	4	3	3	1	3
393	Sulphur Springs city	Benton	0.230	6	2	0	0	1	3
394	HACT SID	Lonoke	0.170	4	4	0	0	1	3
395	Saline Co SID (Woodland Hills)	Saline	0.170	2	8	0	0	1	3
396	Biscoe (Fredonia) town	Prairie	0.160	2	8	0	0	1	3
397	Pyatt town	Marion	0.080	4	4	2	1	1	3
398	Pine Bluff SID #38	Jefferson	0.640	4	1	0	0	1	3
399	Patterson town	Woodruff	0.160	8	2	0	0	1	3
400	Daisy town	Pike	0.040	4	8	2	1	1	3
401	Paraloma	Sevier	0.020	4	8	4	1	1	3
402	South Lead Hill town	Boone	0.040	8	8	0	0	1	3
403	Morrison Bluff town	Logan	0.020	4	1	10	3	1	2
404	Woodberry	Calhoun	0.010	2	8	5	3	1	2
405	Grady city	Lincoln	0.150	2	8	0	0	1	2
406	Harris Brake SID	Perry	0.030	4	4	5	1	1	2
407	Scott CDP	Pulaski	0.030	2	8	5	1	1	2
408	White Oak W&SID #49	Garland	0.030	2	8	5	1	1	2
409	Kingsland city	Cleveland	0.150	2	8	0	0	1	2
410	Skyline SID #4	Pope	0.150	2	8	0	0	1	2
411	Houston town	Perry	0.060	2	8	3	1	1	2
412	St. Joe town	Searcy	0.030	8	2	5	1	1	2
413	Valley Springs town	Boone	0.060	2	4	5	1	1	2
414	Maynard town	Randolph	0.150	2	8	0	0	1	2
415	Tull town	Grant	0.150	8	4	1	1	1	2
416	Des Arc city	Prairie	0.590	4	1	0	0	1	2
417	Norphlet city	Union	0.290	2	4	0	0	1	2
418	Morrilton city	Conway	2.320	1	1	0	0	1	2
419	Fouke town	Miller	0.290	2	4	0	0	1	2
420	Clarendon city	Monroe	0.570	4	1	0	0	1	2
421	Sunset city	Crittenden	0.070	4	8	0	0	1	2
422	Thornton city	Calhoun	0.140	2	8	0	0	1	2
423	Moro town	Lee	0.070	4	8	0	0	1	2
424	145th St WSID #345	Pulaski	0.140	2	8	0	0	1	2
425	Crittenden Co SID #3	Crittenden	0.140	2	8	0	0	1	2
426	Hatfield town	Polk	0.140	2	8	0	0	1	2

No	Community Entity	County	Population Factor	Receiving Stream Class Factor	Receiving Stream Flow Factor	Septic Tank Failure Factor	Septic Tank Suitability Factor	Expired Permit Factor 10	Total Points
427	Arkansas City city	Desha	0.130	2	8	0	0	1	2
428	Madison city	St. Francis	0.260	8	1	0	0	1	2
429	Tyronza town	Poinsett	0.260	4	2	0	0	1	2
430	Grubbs town	Jackson	0.130	4	4	0	0	1	2
431	Havana city	Yell	0.130	4	4	0	0	1	2
432	College Station CDP	Pulaski	0.260	4	2	0	0	1	2
433	Etowah town	Mississippi	0.130	2	8	0	0	1	2
434	Hilltop SID #6	Pope	0.130	2	8	0	0	1	2
435	Emerson town	Columbia	0.130	2	8	0	0	1	2
436	Hardy city	Sharp	0.260	8	1	0	0	1	2
437	Weiner city	Poinsett	0.250	2	4	0	0	1	2
438	Montrose city	Ashley	0.120	2	8	0	0	1	2
439	Sidney town	Sharp	0.060	2	8	2	1	1	2
440	Rudy town	Crawford	0.020	4	8	1	3	1	2
441	Carthage city	Dallas	0.120	2	8	0	0	1	2
442	Wheatley city	St. Francis	0.120	4	4	0	0	1	2
443	Runyan SID #211	Pulaski	0.480	2	2	0	0	1	2
444	Jamestown	Johnson	0.030	2	8	4	1	1	2
445	Washington city	Hempstead	0.060	2	8	1	2	1	2
446	Black Rock city	Lawrence	0.230	8	1	0	0	1	2
447	Diaz city	Jackson	0.450	4	1	0	0	1	2
448	Elaine city	Phillips	0.220	2	4	0	0	1	2
449	Blevins city	Hempstead	0.110	2	8	0	0	1	2
450	Lewisville city	Lafayette	0.440	4	1	0	0	1	2
451	Redfield city	Jefferson	0.440	4	1	0	0	1	2
452	Sulphur Rock town	Independence	0.140	6	2	0	0	1	2
453	Turrell city	Crittenden	0.210	2	4	0	0	1	2
454	Phillips Co PFB	Phillips	0.210	4	2	0	0	1	2
455	Reed town	Desha	0.050	4	8	0	0	1	2
456	Gillham town	Sevier	0.050	2	4	4	1	1	2
457	Knobel town	Clay	0.100	2	8	0	0	1	2
458	Luxora town	Mississippi	0.400	4	1	0	0	1	2
459	Almyra town	Arkansas	0.100	2	8	0	0	1	2
460	Delight city	Pike	0.100	4	4	0	0	1	2
461	Lexa city	Phillips	0.100	4	4	0	0	1	2
462	Mountain Home SID #4	Baxter	0.100	2	8	0	0	1	2
463	Oak Manor WA	Union	0.100	2	8	0	0	1	2
464	Prattsville town	Grant	0.100	2	8	1	2	1	2
465	Pine Bluff SID #37	Jefferson	0.390	4	1	0	0	1	2



No	Community Entity	County	Population Factor	Receiving Stream Class Factor	Receiving Stream Flow Factor	Septic Tank Failure Factor	Septic Tank Suitability Factor	Expired Permit Factor 10	Total Points
466	Parkin city	Cross	0.380	4	1	0	0	1	2
467	Hickory Ridge city	Cross	0.090	2	8	0	0	1	1
468	Wabbaseka city	Jefferson	0.090	2	8	0	0	1	1
469	Georgetown town	White	0.040	4	1	9	1	1	1
470	Edmondson town	Crittenden	0.180	2	4	0	0	1	1
471	Campbell Station town	Jackson	0.090	4	4	0	0	1	1
472	Foreman city	Little River	0.350	4	1	0	0	1	1
473	Coal Hill city	Johnson	0.350	4	1	0	0	1	1
474	Mitchellville city	Desha	0.170	2	4	0	0	1	1
475	Norfolk city	Baxter	0.170	8	1	0	0	1	1
476	Bluff City town	Nevada	0.040	2	8	1	2	1	1
477	Concord town	Cleburne	0.080	2	8	1	1	1	1
478	Delaplaine town	Greene	0.040	4	8	0	0	1	1
479	Griffithville town	White	0.080	2	8	0	0	1	1
480	Pineville town	Izard	0.080	2	8	0	0	1	1
481	Pollard town	Clay	0.080	2	8	0	0	1	1
482	Tillar city	Drew	0.080	2	8	0	0	1	1
483	Minturn town	Lawrence	0.040	4	8	0	0	1	1
484	Wilson town	Mississippi	0.310	2	2	0	0	1	1
485	Princeton	Dallas	0.010	4	4	3	3	1	1
486	Portland city	Ashley	0.150	4	2	0	0	1	1
487	Portia town	Lawrence	0.150	8	1	0	0	1	1
488	Pine Bluff SID #39	Jefferson	0.290	4	1	0	0	1	1
489	Watson city	Desha	0.070	2	8	0	0	1	1
490	Dyess town	Mississippi	0.140	4	2	0	0	1	1
491	Greenway town	Clay	0.070	4	4	0	0	1	1
492	Rondo town	Lee	0.070	4	4	0	0	1	1
493	Russell town	White	0.070	2	8	0	0	1	1
494	O'Kean town	Randolph	0.070	2	8	0	0	1	1
495	Mount Pleasant town	Izard	0.140	2	4	1	2	1	1
496	Franklin town	Izard	0.070	8	4	1	1	1	1
497	Bigelow town	Perry	0.110	4	1	3	1	1	1
498	De Valls Bluff town	Prairie	0.270	4	1	0	0	1	1
499	Oppelo city	Conway	0.270	4	1	0	0	1	1
500	Gentry city	Benton	1.080	1	1	0	0	1	1
501	Altus city	Franklin	0.260	4	1	0	0	1	1
502	Cammack Village city	Pulaski	0.260	4	1	0	0	1	1
503	Colt city	St. Francis	0.130	2	4	0	0	1	1
504	Gilmore town	Crittenden	0.060	4	4	0	0	1	1

No	Community Entity	County	Population Factor	Receiving Stream Class Factor	Receiving Stream Flow Factor	Septic Tank Failure Factor	Septic Tank Suitability Factor	Expired Permit Factor 10	Total Points
505	LaGrange town	Lee	0.030	4	8	0	0	1	1
506	Black Springs town	Montgomery	0.030	2	4	4	1	1	1
507	Ulm town	Prairie	0.060	2	8	0	0	1	1
508	Louann town	Ouachita	0.060	4	4	0	0	1	1
509	McDougal town	Clay	0.060	4	4	0	0	1	1
510	Biggers town	Randolph	0.120	8	1	0	0	1	1
511	Bassett town	Mississippi	0.060	4	4	0	0	1	1
512	Bates	Scott	0.030	4	8	1	1	1	1
513	Cale town	Nevada	0.030	2	8	2	1	1	1
514	Fifty-Six city	Stone	0.060	2	8	0	1	1	1
515	Fountain Hill town	Ashley	0.060	2	8	0	0	1	1
516	Poplar Grove SID	Phillips	0.030	4	8	0	0	1	1
517	Cash town	Craighead	0.120	2	4	0	0	1	1
518	Clinton city	Van Buren	0.890	1	1	0	0	1	1
519	Caddo Valley town	Clark	0.220	4	1	0	0	1	1
520	Magness town	Independence	0.070	4	1	1	3	1	1
521	Haynes town	Lee	0.050	2	8	0	0	1	1
522	Parkdale city	Ashley	0.100	4	2	0	0	1	1
523	Peach Orchard town	Clay	0.050	2	8	0	0	1	1
524	Felsenthal town	Union	0.050	2	8	0	0	1	1
525	Salem SID #10	Saline	0.050	4	4	0	0	1	1
526	Pulaski Co SID #239	Pulaski	0.100	4	2	0	0	1	1
527	Blue Eye town	Carroll	0.010	2	8	5	1	1	1
528	Lands End SID #5	Pope	0.050	2	8	0	0	1	1
529	Sedgwick town	Lawrence	0.050	4	4	0	0	1	1
530	Jerome city	Drew	0.010	2	4	3	3	1	1
531	Widener town	St. Francis	0.090	8	1	0	0	1	1
532	Harrell city	Calhoun	0.090	2	4	0	0	1	1
533	Perrytown city	Hempstead	0.090	2	4	0	0	1	1
534	St. Francis city	Clay	0.090	4	2	0	0	1	1
535	Calion city	Union	0.170	4	1	0	0	1	1
536	Jericho town	Crittenden	0.040	2	8	0	0	1	1
537	Davis Drive SID	Garland	0.020	4	8	0	0	1	1
538	Tollette town	Howard	0.080	2	4	0	0	1	1
539	Fisher town	Poinsett	0.080	2	4	0	0	1	1
540	Roe town	Monroe	0.040	2	8	0	0	1	1
541	Egypt town	Craighead	0.040	2	8	0	0	1	1
542	Salesville city	Baxter	0.150	8	1	1	1	1	1
543	Burdette town	Mississippi	0.070	2	4	0	0	1	1

No	Community Entity	County	Population Factor	Receiving Stream Class Factor	Receiving Stream Flow Factor	Septic Tank Failure Factor	Septic Tank Suitability Factor	Expired Permit Factor 10	Total Points
544	Higden town	Cleburne	0.040	8	8	0	1	1	1
545	Guion town	Izard	0.030	8	1	1	3	1	1
546	Wiederkehr Village town	Franklin	0.010	2	8	1	3	1	1
547	Hindsville town	Madison	0.020	2	8	2	1	1	1
548	Aubrey town	Lee	0.060	2	4	0	0	1	1
549	Marie town	Mississippi	0.030	2	8	0	0	1	1
550	Oak Shadows SID	Pulaski	0.030	2	8	0	0	1	1
551	Faulkner Lake Rd SID	Pulaski	0.060	4	2	0	0	1	1
552	Pine Bluff SID #36	Jefferson	0.120	4	1	0	0	1	1
553	Williford town	Sharp	0.030	8	1	2	1	1	1
554	Donaldson town	Hot Spring	0.100	4	1	0	0	1	1
555	St. Charles town	Arkansas	0.090	4	1	0	0	1	1
556	Oil Trough town	Independence	0.090	4	1	0	0	1	1
557	Nimmons town	Clay	0.020	2	8	0	0	1	1
558	Garland town	Miller	0.080	4	1	0	0	1	1
559	Waldenburg town	Poinsett	0.020	2	8	0	0	1	1
560	Alicia town	Lawrence	0.040	2	4	0	0	1	1
561	Ravenden Springs town	Randolph	0.040	2	4	0	0	1	1
562	Bear Creek SID	Lee	0.020	4	4	0	0	1	1
563	Oakhaven city	Hempstead	0.020	2	8	0	0	1	1
564	Pindall town	Searcy	0.040	2	8	1	1	1	1
565	Suburban SID	Jefferson	0.020	2	8	0	0	1	1
566	Fulton city	Hempstead	0.070	4	1	0	0	1	1
567	Plumerville city	Conway	0.280	1	1	0	0	1	1
568	Amagon town	Jackson	0.030	4	2	0	0	1	1
569	Cedar Mountain SID	Garland	0.030	4	2	0	0	1	1
570	Ogden town	Little River	0.060	4	1	0	0	1	1
571	Plainview city	Yell	0.210	1	1	0	0	1	1
572	Summit city	Marion	0.210	1	1	0	0	1	1
573	Fourche town	Perry	0.020	4	1	3	1	1	1
574	Leola town	Grant	0.170	1	1	0	0	1	1
575	Birdsong town	Mississippi	0.010	4	4	0	0	1	1
576	Victoria town	Mississippi	0.010	4	4	0	0	1	1
577	Gilbert town	Searcy	0.010	8	2	0	1	1	1
578	Perry town	Perry	0.090	1	1	0	0	1	1
579	Cantrell Rd SID	Pulaski	0.010	4	2	0	0	1	1
580	Pine Bluff SID #40	Jefferson	0.010	4	1	0	0	1	1

# **APPENDIX B - Charts**

## Chart 1 Binding Commitments

Project Name / Community Served	Project Number	Estimated Binding Commitment Date	Estimated State Fiscal Year 2018				Totals
			QTR 1	QTR 2	QTR 3	QTR 4	
<b>Section 212 Projects</b>							
Amity	004-028	TBD				285,000	\$ 285,000
Little Rock	004-063	06/15/18 T				61,500,000	\$ 61,500,000
Lockesburg	003-998	08/16/17	650,000				\$ 650,000
Magnolia	003-861	TBD				250,000	\$ 250,000
McNeil	004-010	12/01/17 T		250,000			\$ 250,000
Westfork	003-845	05/01/18 T				2,850,000	\$ 2,850,000
Wilmar	004-054	04/15/18 T				750,000	\$ 750,000
Section 212 SFY Total			650,000	250,000	-	65,635,000	\$ 66,535,000
<b>Cumulative Section 212 Totals</b>		<b>\$ 756,886,789</b>	<b>\$ 757,536,789</b>	<b>\$ 757,786,789</b>	<b>\$ 757,786,789</b>	<b>\$ 823,421,789</b>	
<b>Section 319 Projects</b>							
Nonpoint Croplands			875,000	150,000	150,000	150,000	\$ 1,325,000
Section 319 SFY Totals			878,000	150,000	150,000	150,000	\$ 1,325,000
<b>Cumulative Section 319 Totals</b>		<b>\$ 68,845,110</b>	<b>\$ 69,723,110</b>	<b>\$ 69,873,110</b>	<b>\$ 70,023,110</b>	<b>\$ 70,173,110</b>	
<b>Administrative Program</b>							
Administrative Program SFY Totals			-	-	-	346,440	\$ 346,440
<b>Cumulative Administration</b>		<b>\$ 8,893,162</b>	<b>\$ 8,893,162</b>	<b>\$ 8,893,162</b>	<b>\$ 8,893,162</b>	<b>\$ 9,239,602</b>	
<b>SUMMARY BINDING COMMITMENTS</b>							
Section 212			650,000	250,000	-	65,635,000	\$ 66,535,000
Section 319			878,000	150,000	150,000	150,000	\$ 1,328,000
Administrative Program			-	-	-	346,440	\$ 346,440
Totals			1,528,000	400,000	150,000	66,131,440	\$ 68,209,440
<b>Cumulative Totals</b>		<b>\$ 834,625,061</b>	<b>\$ 836,153,061</b>	<b>\$836,553,061</b>	<b>\$ 836,703,061</b>	<b>\$ 902,834,501</b>	
Estimated Required SFY 2018			-	8,661,000	-	-	\$ 8,661,000
<b>Estimated Cumulative Binding Commitments</b>		<b>\$ 311,112,066</b>	<b>\$ 311,112,066</b>	<b>\$319,773,066</b>	<b>\$ 319,773,066</b>	<b>\$ 319,773,066</b>	
<b>Percentage - Actual/Required</b>		<b>268%</b>	<b>269%</b>	<b>262%</b>	<b>262%</b>	<b>282%</b>	

## Chart 2 Fundable Project List

Project Name	Section	Term	Interest Rate	Estimated Binding Commitment Date	Total Assistance	Population	Green	Green Category	Additional Subsidy	Project Description
Dumas	212	20	2.50%	06/15/18	3,975,000	5,238	TBD	TBD	3,000,000	Install sewer system in Winchester; connect to and upgrade Dumas sewer system to treat the additional sewer
Lockesburg	212	20	2.50%	11/15/17	350,000	711	350,000	Energy Efficiency	350,000	Improvements at treatment plant
Little Rock	212	20	2.50%	06/15/18	61,500,000	183,133	TBD	TBD		LR #13 Rehabilitate and/or upgrade existing collection system or install a new sanitary sewer main.
McNeil	212	20	2.50%	12/01/17	250,000	662	TBD	TBD		Improvements at treatment plant
Washington County POID #5	212	20	2.50%	12/18/17	1,000,000	750	TBD	TBD		Planning and Design costs associated with a project to transport sewage to Prairie Grove for Treatment
Westfork	212	20	2.50%	05/01/18		2,317	1,300,000	Energy Efficiency		Improvements and betterments necessary to transport wastewater to Fayetteville for treatment and demolition of the city's existing sewer treatment plant.
Wilmar	212	20	2.50%	04/01/18	750,000	511	TBD	TBD	750,000	Repair sewer treatment plant to meet ADEQ requirements.
Ag Loan Program	319	10	3.00%	06/30/18	1,000,000	N/A	N/A	N/A	N/A	Best Management Practices
<b>Total:</b>					<b>\$68,825,000</b>		<b>\$1,650,000</b>		<b>\$4,100,000</b>	

Description	Count	Amount
Section 212:	7	\$67,825,000
Section 319:	1	\$1,000,000
Small < 5000	5	\$2,350,000

### Chart 3 Statutory Limits

	Cap Grants 2011	Cap Grants 2012	Cap Grants 2013	Cap Grants 2014	Cap Grants 2015	Cap Grants 2016	Cap Grants 2017
MINIMUM AMOUNT OF FUNDS TO BE 1. USED FOR 212 PROJECTS WHICH MEET TITLE II REQUIREMENTS.	\$9,657,000	\$9,239,000	\$8,722,000	\$9,165,000	\$9,117,000	\$8,729,000	\$8,661,000
2. MAXIMUM AMOUNT OF EPA/ACH FUNDS TO BE USED FOR RLF ADMINISTRATION.	\$386,280	\$369,560	\$348,880	\$366,600	\$364,680	\$349,160	\$346,440
3. Minimum amount of subsidization	\$894,875	\$513,470	\$410,843	\$498,738	\$0	\$872,900	\$866,100
Maximum amount of subsidization	\$2,982,915	\$770,205	\$616,265	\$748,107	\$2,735,100	\$2,618,700	\$2,598,300
4. Green Project Reserve	\$1,931,400	\$923,900	\$872,200	\$916,500	\$911,700	\$872,900	\$866,100
5. AMOUNT OF STATE MATCH	\$1,931,400	\$1,847,800	\$1,744,400	\$1,833,000	\$1,823,400	\$1,745,800	\$1,732,200
MAXIMUM AMOUNT OF FUNDS AVAILABLE 6. FOR 212 PROJECTS WHICH DO NOT HAVE TO MEET TITLE II REQUIREMENTS.	\$1,931,400	\$1,847,800	\$1,744,400	\$1,833,000	\$1,823,400	\$1,745,800	\$1,732,200
7. CUM TOTAL WHICH DO NOT HAVE TO MEET TITLE II REQUIREMENTS.	\$214,288,051	\$223,527,051	\$232,249,051	\$241,414,051	\$250,531,051	\$259,260,051	\$267,921,051

**Chart 4 Sources and Uses of Funds**

**SOURCES OF FUNDS**

Beginning Balance (SFY 2017 Carryover)	109,458,827.33
<b><i>State Fiscal Year 2018 (Projected)</i></b>	
Federal Grant FFY 2017	8,661,000.00
State Match SFY 2018 <i>(FFY17 Cap Grant)</i>	1,732,200.00
2016 Federal Cap Grant Balance	4,810,528.99
Principal Repayments *	14,411,432.00
Interest Earnings on Loans & Investments *	2,303,509.00
<b>Sub Total</b>	<b>\$ 31,918,669.99</b>
<b>Total Sources of Funds</b>	<b>\$ 141,377,497.32</b>

**USES OF FUNDS**

***DWSRF Loan Commitments for SFY 2018***

Estimated Binding Commitments SFY 2018 *	\$68,825,000
ANRC Approved Loans <i>(not closed)</i>	5,035,000.00
ANRC Approved Loans <i>(closed, undisbursed funds)</i>	96,180,342.20
<b>Sub Total</b>	<b>\$ 170,040,342.20</b>

***DWSRF Set-Aside Programs for SFY 2018***

Administration *	471,562.00
------------------	------------

***Debt Service Obligations***

Leveraged Bond Principal <i>(Jul 17 to Jun 18)</i>	2,345,000.00
Leveraged Bond Interest <i>(Jul 17 to Jun 18)</i>	1,196,587.50
<b>Sub Total</b>	<b>\$ 3,541,587.50</b>

<b>Total Uses of Funds</b>	<b>\$ 174,053,491.70</b>
----------------------------	--------------------------

<b>Funds (needed)/available</b>	<b>\$ (32,675,994.38)</b>
---------------------------------	---------------------------

*\*Estimated amount*

*Fees are not deposited into the Fund; therefore, based on EPA guidance they are not included in the Sources and Uses for the Fund*